

26 January 2023

## The Economically Active Population Survey (EAPS) and the Statistics on Economically Active Population Flows (SEAPF) Fourth quarter 2022

### Main results

- Employment registered a decrease of 81,900 persons in the fourth quarter of 2022 as compared with the previous quarter (-0.40%), standing at 20,463,900 employed persons. In seasonally adjusted terms, the quarterly variation was -0.01%. Employment has grown by 278,900 persons (1.38%) in the last 12 months.
- Employment increased this quarter by 20,000 people in the public sector, but decreased by 101,900 in the private sector. In the last twelve months, employment has increased by 228,200 persons in the private sector and 50,700 in the public sector.
- Salaried employees decreased this quarter by 31,700. The number of wage-earners with a permanent contract has increased by 366,100 persons, while that of wage-earners with temporary contracts has decreased by 397,800 persons. The number of salaried employees increased by 397,300 in the annual rate (permanent employment increased by 1,591,100 persons and temporary employment fell by 1,193,800). The number of self-employed workers decreased by 34,700 this quarter and by 111,200 in the last 12 months.
- This quarter, employment increased in *Agriculture* (24,200 more employed persons) and declined in *Services* (70,100 less), *Construction* (-28,000) and *Industry* (-8,000). In the past year, employment rose in *Services* (by 314,300) in *Industry* (36,600), and in *Construction* (14,900), and it has declined in *Agriculture* (-86,900).
- The largest increases in the in the economically active population this quarter were registered in Canarias (43,100 more), Comunitat Valenciana (27,300) and Comunidad de Madrid (26,400). The greatest decreases were recorded in Illes Balears (-83,300), Cataluña (-40,900) and Andalucía (-19,400). In the last year, the greatest increases in occupancy occurred in Comunitat Valenciana (102,700 more), Canarias (52,800) and Illes Balears (33,800). The greatest decreases were in Principado de Asturias (-15,100), País Vasco (-7,700) and Aragón (-5,000).
- The number of unemployed persons increased by 43,800 this quarter (1.47%), standing at 3,024,000. In seasonally adjusted terms, the quarterly variation was 2.32%. Over the last 12 months, unemployment has decreased by 79,900 persons (-2.57%). The unemployment rate stood at 12.87%, which is 21 hundredths more than the previous quarter. Within the last year, this rate has decreased by 45 hundredths.
- By autonomous communities, the highest quarterly unemployment drops were in Andalucía (-35,200), Castilla-La Mancha (-11,700) and Extremadura (-3,500). The greatest increases were registered in Illes Balears (29,700 more unemployed persons), Cataluña (21,900) and Comunidad de Madrid (10,600). In annual terms, the largest reductions in the number of unemployed occurred in Andalucía (56,800 fewer), Canarias (-50,100) and Illes Balears (-24,100), while the largest increases were observed in Comunidad de Madrid (57,700), Principado de Asturias (20,000) and Castilla-La Mancha (13,000).

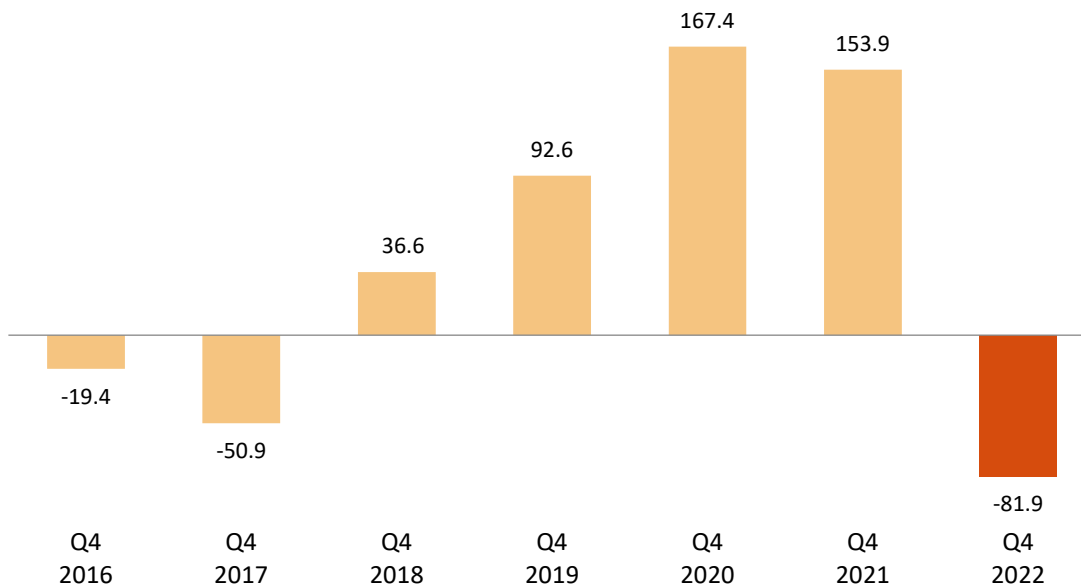
- This quarter, the number of economically active persons decreased by 38,100, up to 23,487,800. The activity rate decreased by 34 hundredths standing at 58.52%. Over the last year, the economically active population has increased by 199,000 persons.

## Employment

The number of employed persons decreased by 81,900 persons in the fourth quarter of 2022, standing at 20,463,900. The quarterly employment variation rate stood at -0.40%.

The employment rate (percentage of employed persons in relation to the population aged 16 and over) stood at 50.99%, representing a decrease of 42 hundredths as compared to the previous quarter. In annual variation, the rate rose by 15 hundredths.

**Quarterly variation of employment.** Thousands.  
(Q4 compared with Q3 of the same year)



By sex, employment decreased this quarter by 137,400 men, while it rose by 55,500 women. By nationality, employment fell by 137,600 persons among Spaniards<sup>1</sup>, while it grew by 55,700 persons among foreign nationals.

By age, employment grew this quarter in the groups from 25 to 29 years (8,900 more employed), from 40 to 44 years (9,800 more) and in the group from 50 to 54 years (8,000 more). In contrast, it decreased in the rest of the groups. Especially notable were the decreases among those from 20 to 24 years (-50,600) and from 16 to 19 years (-28,500).

In the past 12 months, employment has increased by 278,900 persons (146,800 men and 132,100 women). The annual variation rate of employment was 1.38%, representing an increase of 1.19 points compared to the previous quarter.

<sup>1</sup> Includes dual nationality

**Annual variation rate of employment. Percentage.**



In this quarter, employment increased in *Agriculture* (24,200 more people). On the other hand, it decreased in *Services* (70,100 less), in *Construction* (-28,000) and in *Industry* (-8,000).

In the past year, employment has risen in *Services* (314,300 more employed), in *Industry* (36,600), and in *Construction* (14,900). At the same time, it decreased in *Agriculture* (-86,900).

Full-time employment decreased by 241,500 persons this quarter, whilst part-time employment increased by 159,600. The percentage of persons employed part-time increased by 83 hundredths, up to 13.59%.

Over the last 12 months, full-time employment has increased by 235,200 persons and part-time employment by 43,700.

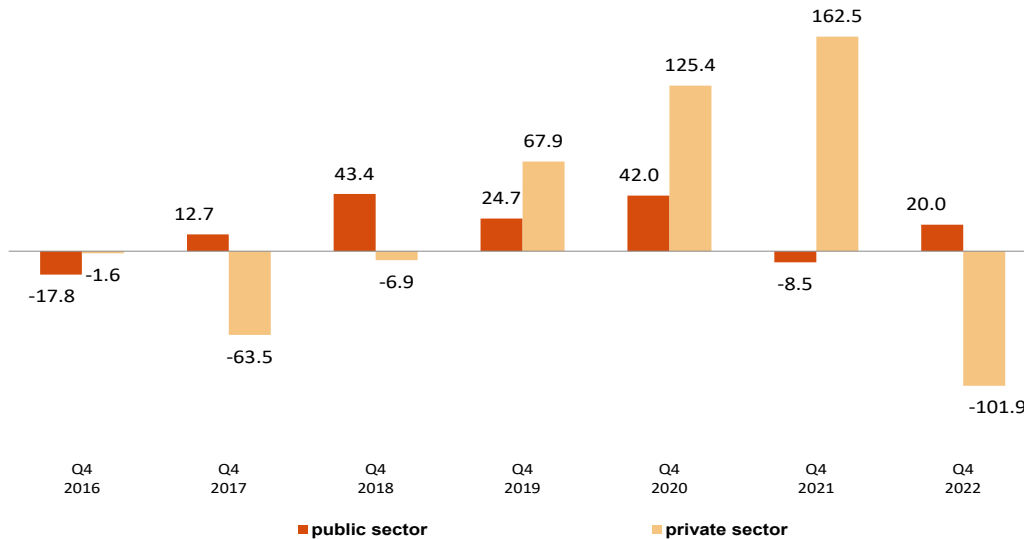
This quarter, the number of salaried employees decreased by 31,700. The number of wage-earners with a permanent contract has increased by 366,100 persons, while that of wage-earners with temporary contracts has decreased by 397,800 persons. The temporary employment rate decreased 2.25 points, to 17.93%.

Over the last 12 months, the number of salaried employees has increased by 397,300. Permanent employment has increased by 1,591,100, while temporary employment decreased by 1,193,800.

The number of self-employed persons decreased by 34,700 persons in quarterly variation, and by 111,200 over the past year.

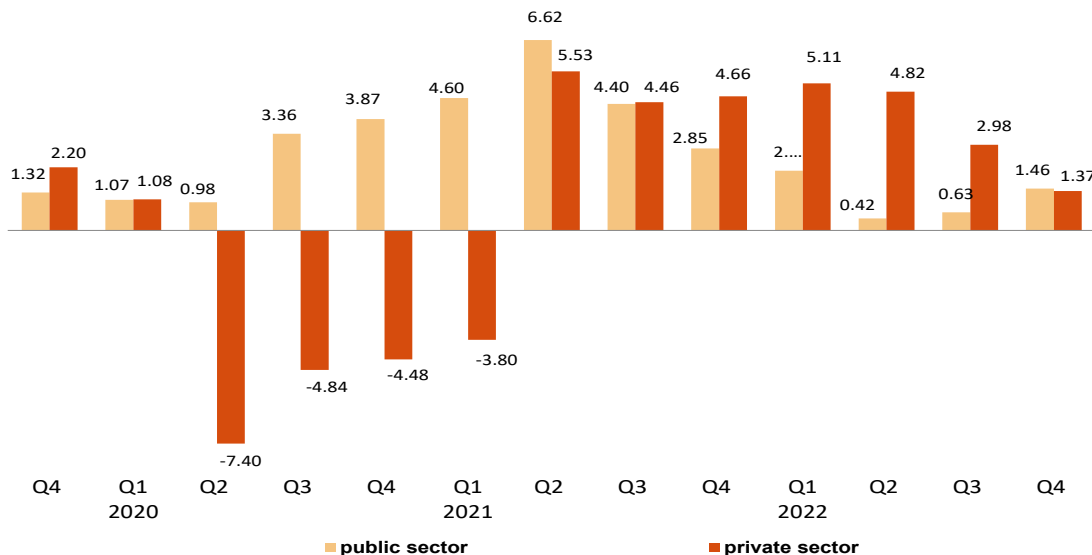
This quarter, private employment<sup>2</sup> decreased by 101,900 persons, standing at 16,937,600. Public employment<sup>3</sup> increased by 20,000, to 3,526,200

## Quarterly variation of employment by nature of employer. Thousands (Q4 compared with Q3 of the same year)



Employment in the private sector showed an annual variation of 1.37%, while public employment had a variation of 1.46%. In the past twelve months, employment has increased by 228,200 persons in the private sector and by 50,700 in the public sector.

## Annual variation rate of employment by nature of employer. Percentage.



<sup>2</sup> Employment in the private sector includes: wage-earners from the private sector, employers, independent workers and businesspersons without wage earners, members of a cooperative, family assistance and other professional situations.

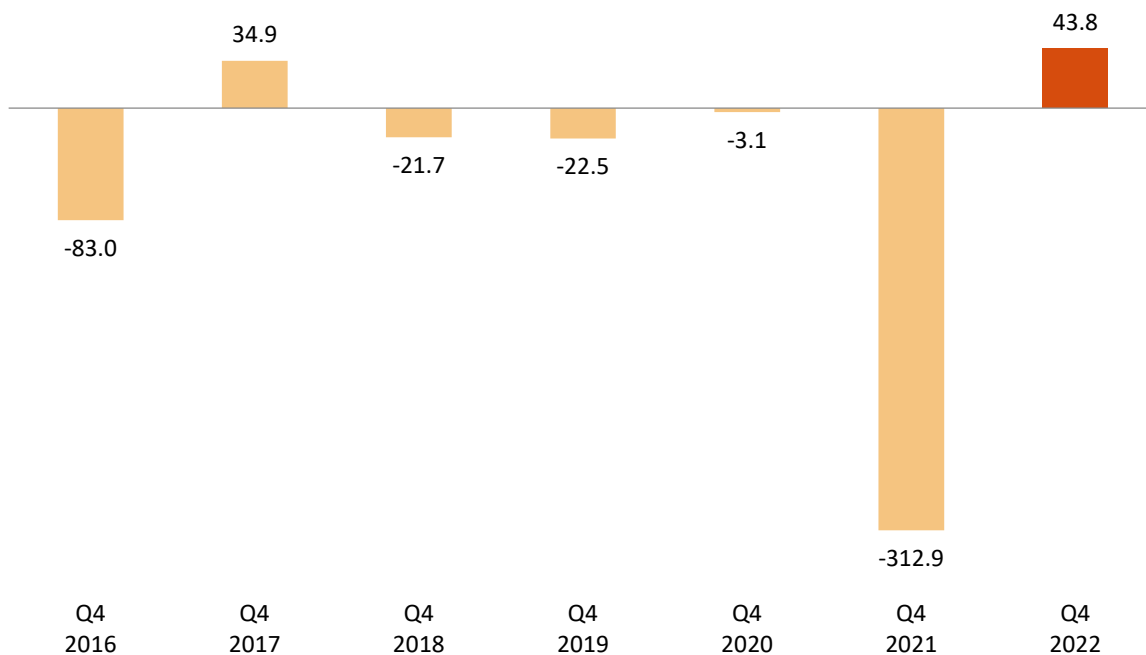
<sup>3</sup> Employment in the public sector includes all the wage earners of public enterprises and of the National and Regional Administrations, including both workers contributing to the Social Security and those attached to the Special Civil Service System.

## Unemployment and unemployment rate

Unemployment increased by 43,800 persons this quarter. The total number of unemployed persons stood at 3,024,000. In relative terms, the quarterly variation of unemployment was 1.47%.

### Quarterly variation of employment. Thousands

(Q4 compared with Q3 of the same year)



The unemployment rate increased 21 hundredths and stood at 12.87%. In the last 12 months, this rate has decreased by 45 hundredths.

By sex, the number of unemployed men increased by 64,200 this quarter, standing at 1,401,000. Among women, unemployment decreased by 20,400, reaching 1,623,000.

Female unemployment rate decreased by 23 hundredths and stood at 14.61%. The male unemployment rate increased by 58 hundredths and stood at 11.32%.

By age group, unemployment fell this quarter among persons from 6 to 19 years old (-36,600) and among those from 20 to 24 (-39,300). On the other hand, the number of unemployed persons increased by 86,200 among those aged 25 to 54 and by 33,400 among those aged 55 and over.

By nationality, unemployment increased this quarter among Spaniards<sup>1</sup> by 21,100 and among foreigners by 22,700. The unemployment rate of the Spanish population was 11.93%, and that of the foreign population was 18.65%.

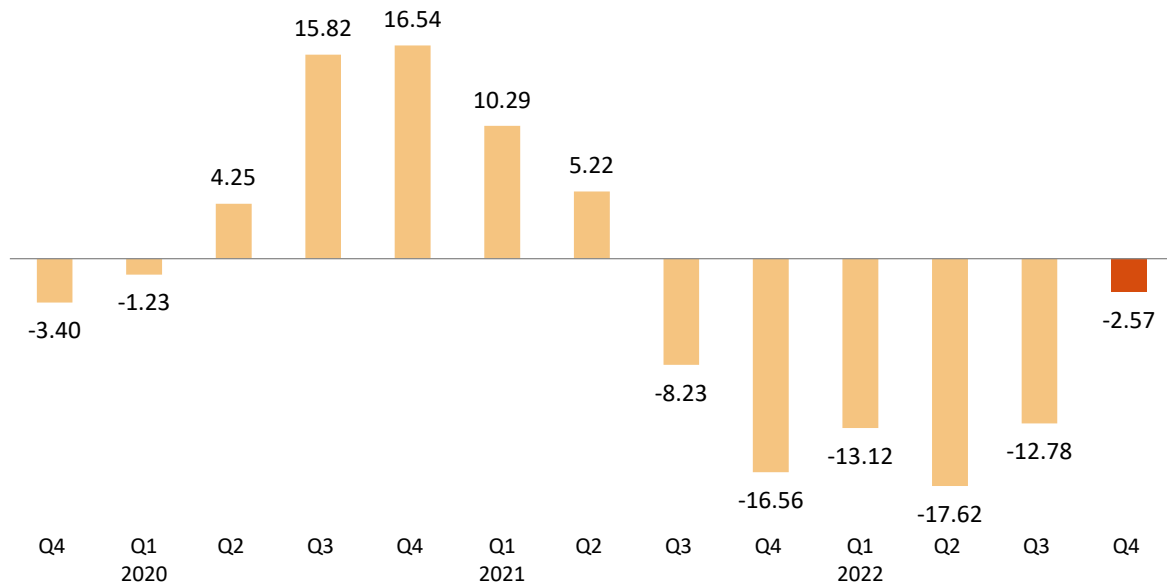
This quarter, unemployment increased in *Services* (39,700 more unemployed), in *Construction* (13,600) and in *Industry* (3,100). In turn, it decreased in *Agriculture* (-13,700).

Unemployment increased by 40,600 people among those who lost their job over a year ago, while it decreased by 39,600 among those who are seeking their first job.

<sup>1</sup>Includes dual nationality

The annual variation in unemployment was -2.57%. The total number of unemployed persons has decreased by 79,900 persons in one year, with a decrease of 47,200 for men and 32,600 for women.

## Annual variation rate of unemployment. Percentage.



By age, the number of unemployed persons rose in the last 12 months in the 20 to 24-year-old group (15,900) and fell in the rest, with the most pronounced drop being that of the 25-54-year-old group (with 50,300 fewer unemployed).

By sectors, in the last year unemployment decreased in *Agriculture* (15,500 fewer unemployed persons), while it remained nearly unchanged in *Construction* (800 more) and increased in *Services* (101,100 more) and in *Industry* (7,100). On the other hand, the number of unemployed persons who lost their jobs over a year ago has decreased by 180,800 and that of unemployed persons looking for their first job has risen by 7,400.

## Economically active population and activity rate

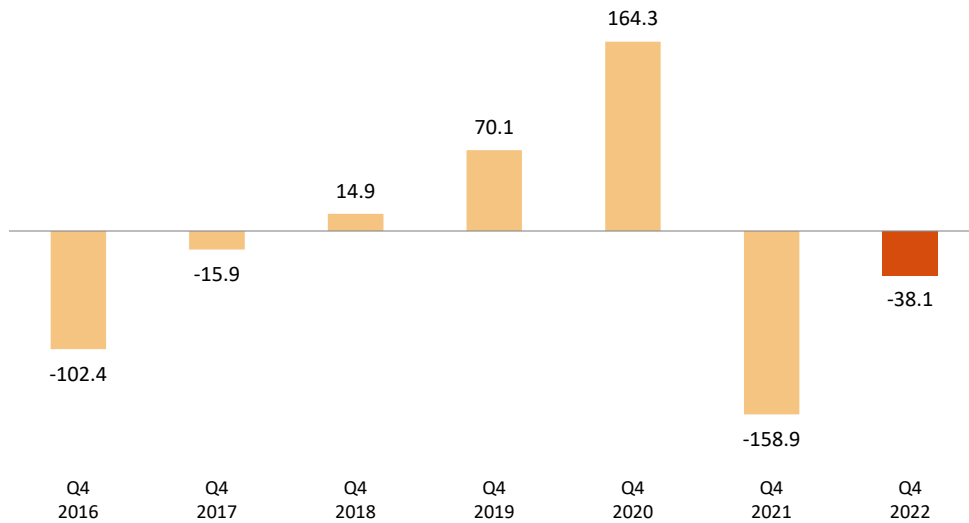
The economically active population experienced a decrease of 38,100 persons in the fourth semester of this year, standing at 23,487,800. The number of economically active women increased by 35,000, while that of men decreased by 73,100.

By nationality, the number of economically active persons decreased by 116,500 among Spaniards<sup>1</sup> and increased by 78,400 among foreign nationals in this quarter.

The economic activity rate decreased 34 hundredths, reaching 58.52%. For men, the rate dropped by 65 hundredths standing at 63.53%. For women, it fell by five hundredths to 53.79%.

<sup>1</sup>Includes dual nationality

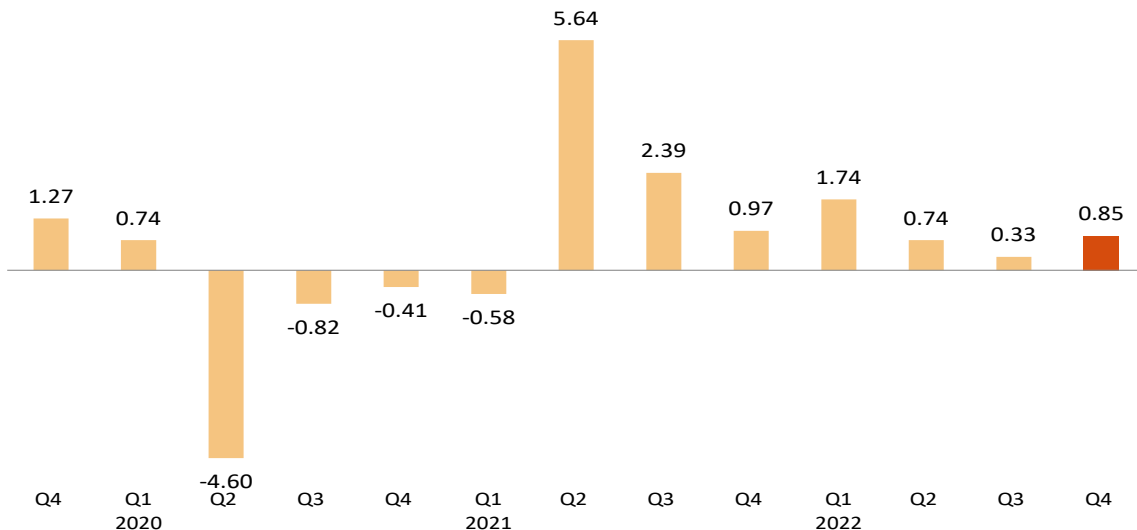
**Quarterly variation of activity. Thousands**  
(Q4 compared with Q3 of the same year)



The activity rate of Spaniards<sup>1</sup> decreased 42 hundredths as compared with the previous quarter, standing at 57.09%. For foreigners, it fell by one hundredth, to 69.05%. The difference of almost 12 points between both rates is mainly explained by the different age structures for both populations.

In annual terms, the economically active population has increased by 199,000 persons. The annual variation rate of economically active persons was 0.85%.

**Annual variation rate of activity. Percentage**



<sup>1</sup>Includes dual nationality

## Households

The number of households increased by 70,500 this quarter, standing at 19,200,700. Of these, 5,337,300 were single-person households.

Households in which all economically active members were unemployed increased by 70,100 this quarter, up to a total of 1,047,500. Of these, 320,300 were single-person households.

On the other hand, the number of households in which all of the economically active members were employed decreased by 38,900, standing at 11,255,300. Of these, 2,320,300 were single-person households.

In annual comparison, the number of households with at least one economically active member in which those members were unemployed has increased by 23,600, while those where all active members were employed rose by 183,300.

## Results by Autonomous Communities<sup>4</sup>

The largest increases in the in the economically active population this quarter were observed in Canarias (43,100 more), Comunitat Valenciana (27,300) and Comunidad de Madrid (26,400). In turn, the largest decreases were seen in Illes Balears (-83,300), Cataluña (-40,900) and Andalucía (-19,400).

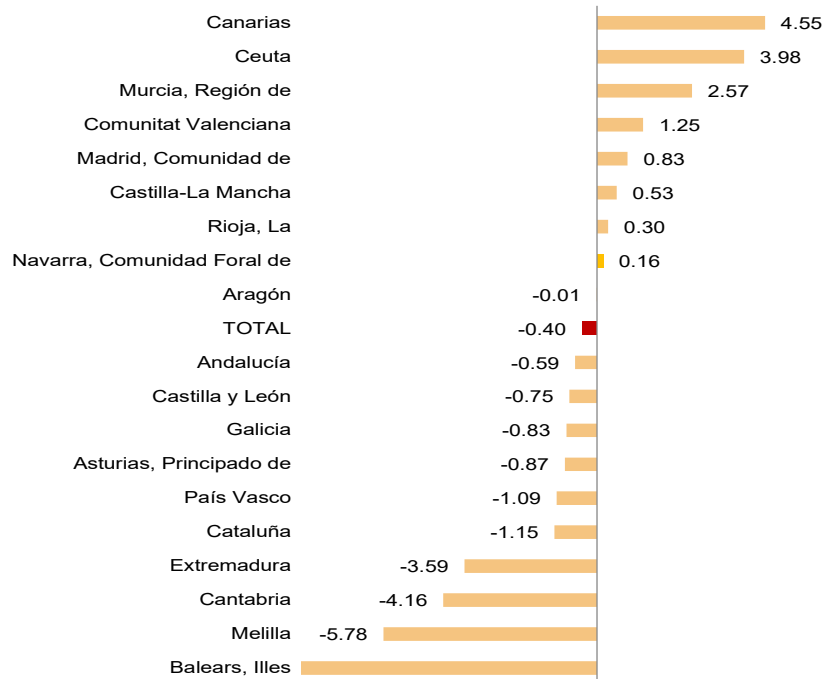
In relative terms, the Autonomous Communities with the highest quarterly employment increase were Canarias (4.55%), Región de Murcia (2.57%) and Comunitat Valenciana (1.25%).

---

<sup>4</sup> As with the rest of the EAPS data, employment results in this section are presented according to the Autonomous Community of residence of those persons interviewed in the survey, and not according to where their workplace is.



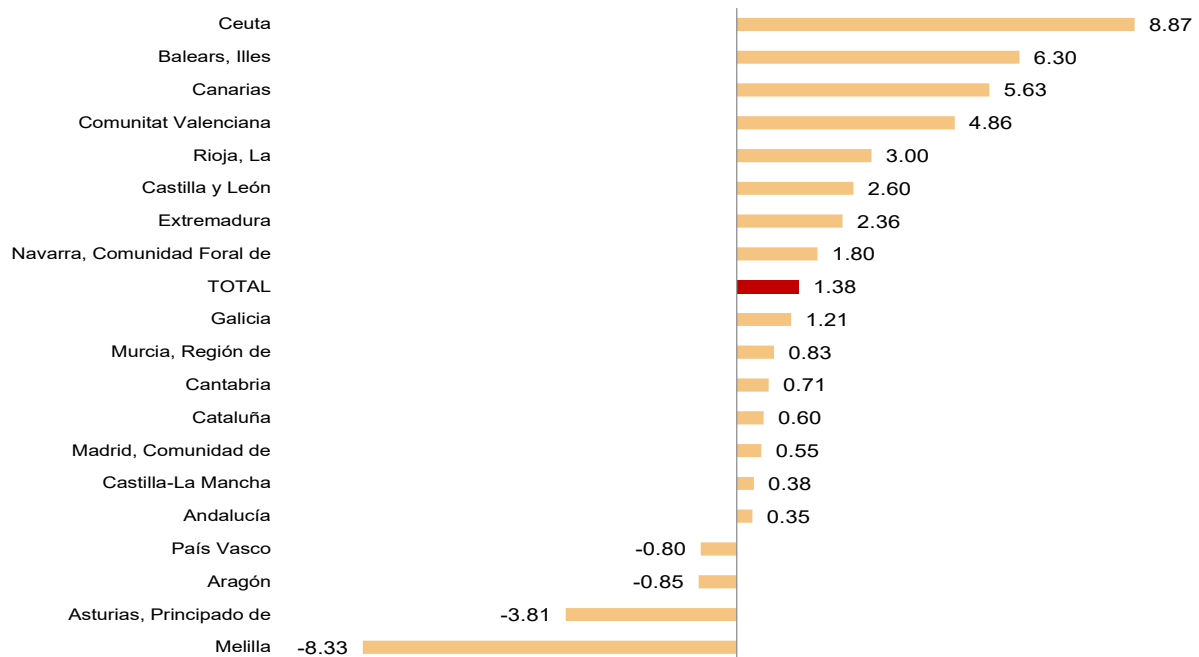
## Quarterly variation rate of employment by autonomous community. Percentage



In the past year, employment increased in almost all communities. The greatest increases took place in Comunitat Valenciana (102,700 more), Canarias (52,800) and Illes Balears (33,800). On the other hand, employment decreased over the last 12 months in Principado de Asturias (-15,100), País Vasco (-7,700) and Aragón (-5,000).

In relative terms, the greatest annual variations in employment occurred in Illes Balears (6.30%), Canarias (5.63%) and Comunitat Valenciana (4.86%). In turn, Principado de Asturias (-3.81%), Aragón (-0.85%) and País Vasco (-0.80%) presented negative annual variation rates.

**Annual variation rate of employment by autonomous community. Percentage.**



The highest quarterly unemployment drops took place in Canarias (-35,200), Región de Murcia (-11,700) and Galicia (-3,500). On the other hand, the greatest increases were registered in Illes Balears (29,700 more unemployed persons), Cataluña (21,900) and Comunidad de Madrid (10,600).

In annual terms, the greatest decreases in the number of unemployed persons occurred in Andalucía (-56,800), Cataluña (-50,100) and Illes Balears (-24,100). On the other hand, the greatest increases in unemployment were observed in Comunidad de Madrid (57,700 more unemployed persons), Principado de Asturias (20,000) and Castilla-La Mancha (13,000).

La Rioja (8.60%), País Vasco (8.66%) and Castilla y León (8.83%) recorded the lowest unemployment rates this quarter. At the other end of the scale, Andalucía (19.00%), Extremadura (17.62%) and Canarias (14.57%) showed the highest rates.

The highest increases in activity rates in this quarter were registered in Comunidad de Madrid (37,000 more economically active persons), Comunitat Valenciana (32,600) and Canarias (8,000). The greatest decreases were recorded in Illes Balears (53,600 less), Andalucía (-22,700) and Cataluña (-19,000).

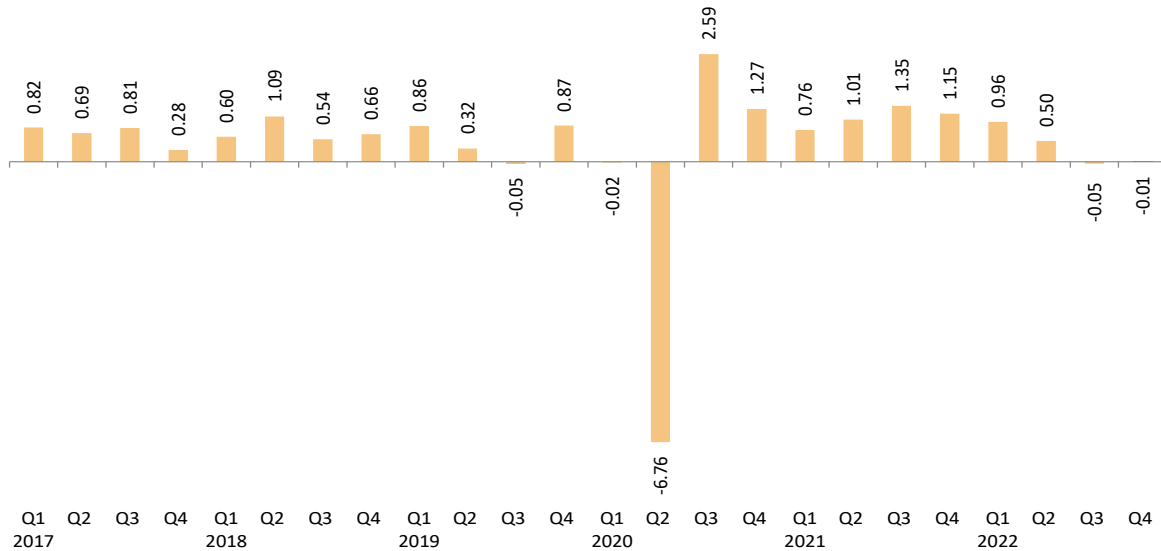
In the last 12 months, Comunitat Valenciana (94,100 more), Comunidad de Madrid (75,100) and Castilla-La Mancha (16,300) registered the greatest increases in the number of economically active persons. However, the greatest decreases occurred in Andalucía (45,500 fewer) and País Vasco (-5,800).

This quarter, the activity rates fluctuated between 63.21% for Comunidad de Madrid and 50.45% for Principado de Asturias.

**Seasonally adjusted series**

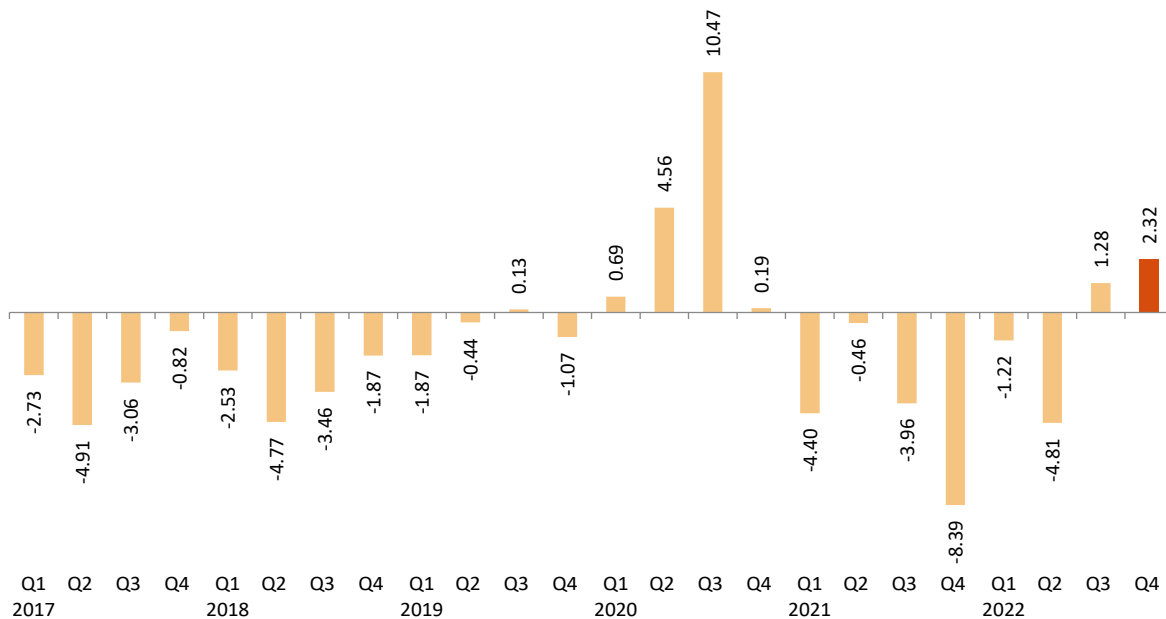
In the fourth quarter of 2022, the quarterly rate of employment in seasonally adjusted terms was -0.01%.

**Quarterly variation rate of seasonally adjusted employment. Percentage.**



In regarding to the seasonally-adjusted unemployment results, an increase of 2.32% was observed.

**Quarterly variation rate of seasonally adjusted unemployment. Percentage.**



As explained in the methodology used for seasonal adjustment, the seasonal adjustment model is maintained for a year, with the first quarters corresponding to the time of the model's re-identification, but the coefficients are recalculated quarterly, so that each quarter

the previous results are reviewed (either by re-identification or by revision of coefficients) and therefore the latest series available must always be consulted.

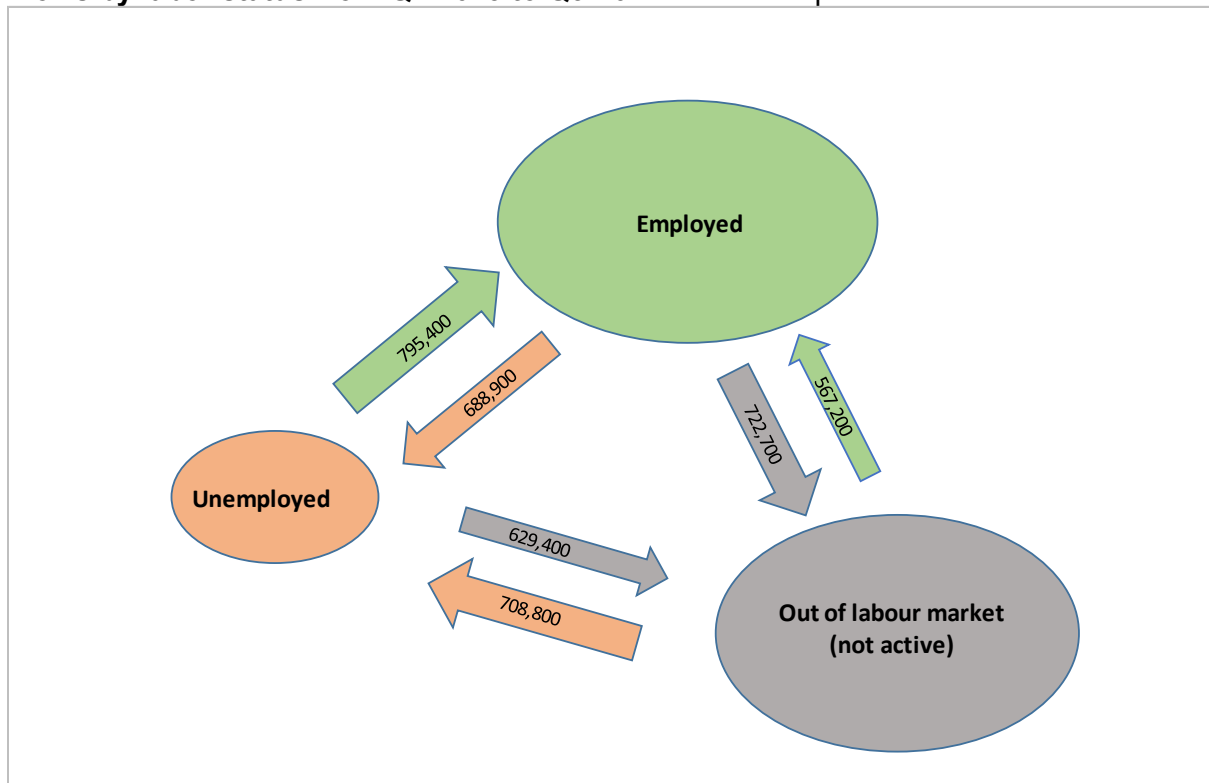
The series of the quarterly variation rates of the seasonally adjusted results of employment and unemployment since 2005 and the description of the method used can be found in:

[http://www.ine.es/daco/daco42/daco4211/epa\\_desestacional.xlsx](http://www.ine.es/daco/daco42/daco4211/epa_desestacional.xlsx)

### Flows in absolute values as compared with the previous quarter<sup>5</sup>

This quarter has seen an increase in flows towards inactivity and unemployment from those who were employed in the previous quarter. An increase in the incorporation of unemployed persons can also be observed in the quarter prior to employment in this quarter.

**Flows by labor status from Q4-2023 to Q3-2022** Number of persons.

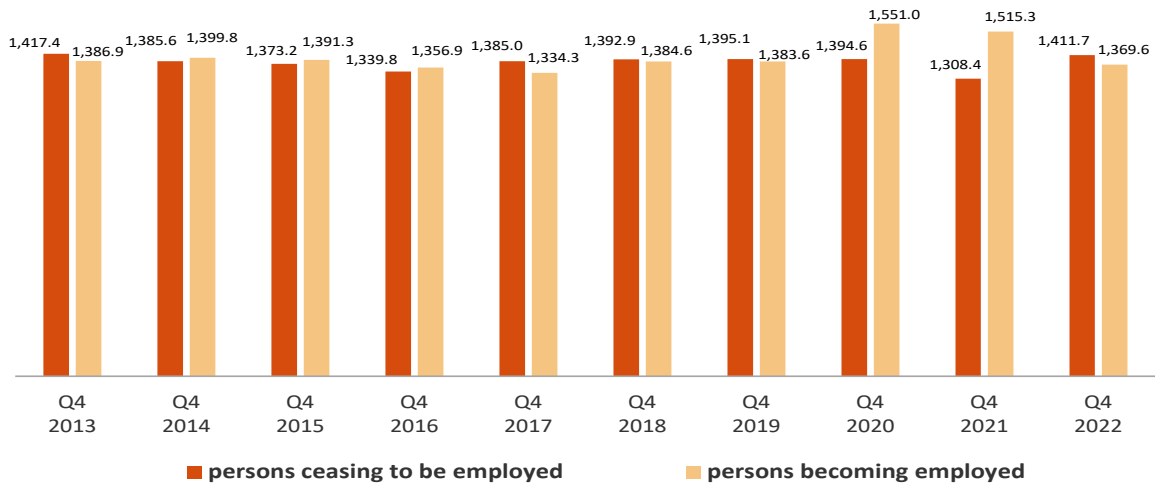


The total inflow to employment in the fourth quarter of 2022 was 1,369,600 people, a figure 145,700 lower than that registered in the same quarter of the previous year.

However, the outflow from employment was 1,411,700 people, which is 103,300 more than in the same quarter of 2021.

<sup>5</sup> This section compiles the results of the Economically Active Population Flow Statistics. Due to the methodology used in preparation, the results might not match the net balances of quarterly EAPS. The differences are caused by the “no data recorded” groups (persons turning 16 years old in the change between one quarter and the next and those who did not live in Spain in the previous quarter).

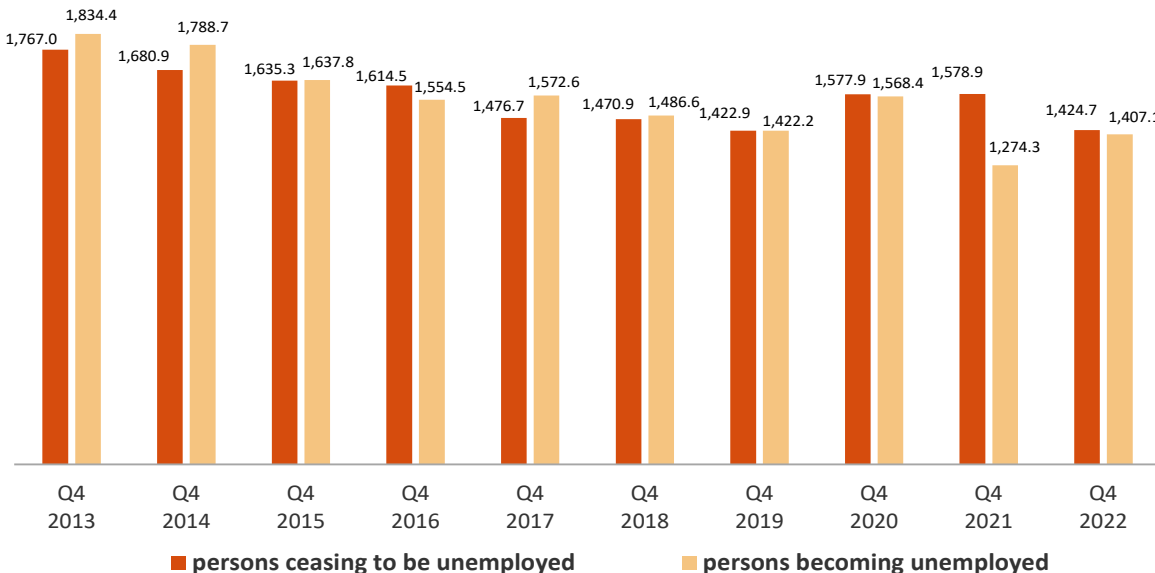
**Flows of persons becoming and ceasing to be employed each quarter. Thousands.**



The number of persons who were unemployed three months ago but are not currently unemployed stood at 1,424,700, which is 154,200 fewer persons than in the same period in 2021.

However, the total inflow to unemployment reached 1,407,100 people, which is 132,800 more persons than in the fourth quarter of 2021.

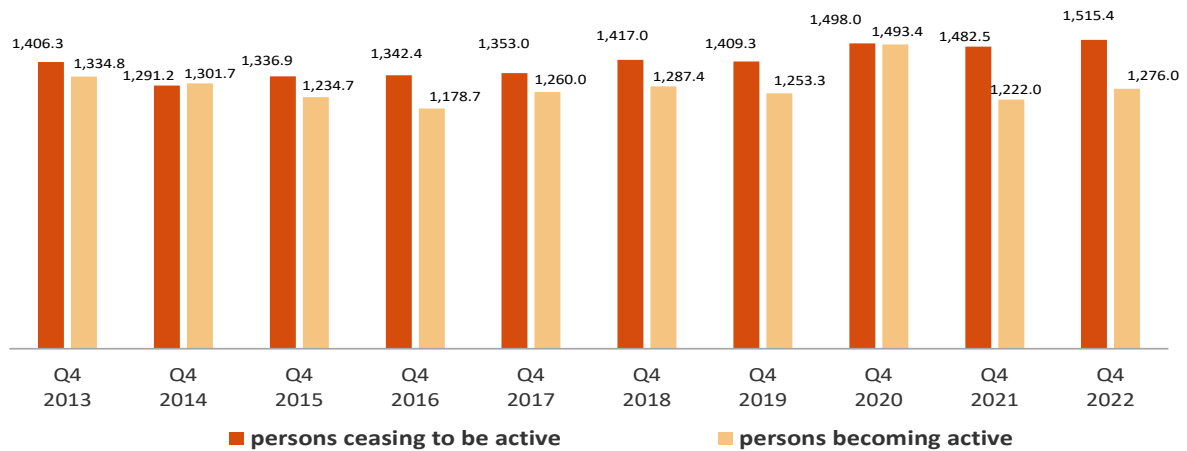
**Flows of persons becoming and ceasing to be unemployed each quarter. Thousands**



The inflow into activity in this fourth quarter was 1,276,000, a figure 54,000 higher than that of the same period in 2021.

Meanwhile, a total of 1,515,400 people have left the activity this quarter, compared to 1,482,500 who did so during the same quarter in the previous year (that is, 32,900 more).

## Flows of persons becoming and ceasing to be active each quarter. Thousands.



The outflow from employment to inactivity of people aged 60 and over was 116,300 this quarter. This figure is 6,400 persons lower than the one observed in the same period of 2021.

The number of people under 25 who have entered employment directly from inactivity this quarter stood at 177,300, a figure 57,300 persons higher than for the same quarter of 2021.

The flow data on which these comments are based can be found in the annex to this press release: <http://www.ine.es/daco/daco42/daco4211/epafluj0422.xlsx>

## EAPS results by province

The provincial results summary of the EAPS may be accessed via the following link:

<http://www.ine.es/daco/daco42/daco4211/epapro0422.pdf>

All the provincial information can also be accessed from the INEbase database:

<http://www.ine.es/dynt3/inebase/index.html?padre=996>

## Data Review and Update

The data published today are final. All results are available on INEBase.

## Methodological note

The Labour Force Survey (EAPS) has been carried out since 1964. The methodology currently used was put in place in 2021, and adapts the previous methodology (begun in 2005) to the new regulations of the European Labour Force Survey.

It is a continuous, quarterly research addressed to families, whose main purpose is to obtain data on the labour force and its various categories (employed, unemployed), as well as on the population outside the labour market (inactive).

As of the third quarter of 2009, the survey includes an additional sample in Galicia that is collected by the Galician Statistics Institute (IGE) using the same fieldwork system and methodology as the INE.

**Type of survey:** quarterly continuous survey.

**Population scope:** population residing in family dwellings.

**Geographical scope:** the entire national territory.

**Reference period of the results:** the quarter.

**Reference period of the information:** the week before the interview.

**Sample size:** 3,822 census tracts, around 65,000 dwellings and 160,000 people. Of the 3,822 tracts, 234 correspond to the additional sample of Galicia.

Gradually the number of sections will increase to a total of 5,298 in 2024, of which 288 correspond to the additional sample from Galicia. The number of homes selected per section will go from an average of 20 to 14.

**Type of sampling:** two-stage sampling with stratification in the first stage units. The first stage units are the census tracts and the second stage units are the inhabited family dwellings.

**Collection method:** personal, telephone, and web interview.

For more information, the methodology and technical details of the survey design and data quality assessment can be accessed at:

[https://www.ine.es/dynqs/INEbase/es/operacion.htm?c=Estadistica\\_C&cid=1254736176918&menu=metodologia&idp=1254735976595](https://www.ine.es/dynqs/INEbase/es/operacion.htm?c=Estadistica_C&cid=1254736176918&menu=metodologia&idp=1254735976595)

The standardized methodological report is at:

<https://www.ine.es/dynt3/metadatos/en/RespuestaDatos.html?oe=30308>

INE statistics are produced in accordance with the Code of Good Practice for European Statistics, which is the basis for the institution's quality policy and strategy. For more, see the section on [Calidad en el INE y Código de Buenas Prácticas](#) on the INE website.

The Statistics on Economically Active Population Flows (EAPFS) collect information regarding the follow-up of the population, or specific groups thereof, between one quarter and the previous one in absolute values, regarding its relation with labour market. This information links the interviewee's situations in two moments of time on the basis of the EAPS in order to study its evolution.

Given that in the EAPS sample one sixth is renewed each quarter and the remaining 5/6 parts are kept fixed between two consecutive quarters, the common part of the sample between the two conducts of the survey is used to obtain flow statistics from the questions relating to the situation in which the interviewee was in the current and previous quarters.

**Type of survey:** quarterly exploitation of the common EAPS sample between consecutive quarters that provides estimates in absolute values of the relation with the activity in the current period compared with that of the previous quarter.

**Population scope:** population residing in family dwellings.

**Geographical scope:** the entire national territory.

**Reference period of the results:** the quarter.

**Reference period of the information:** the week before the interview.

**Sample size:** 3,822 census tracts. The common EAPS sample between consecutive quarters is approximately 100,000 people aged 16 and older. Gradually the number of sections will increase to a total of 5,298 in 2024, of which 288 correspond to the additional sample from Galicia. The number of homes selected per section will go from an average of 20 to 14.

**Type of sampling:** two-stage sampling with stratification in the first stage units. The first stage units are the census tracts and the second stage units are the inhabited family dwellings.

**Collection method:** personal and telephone interview.

For more information the methodology can be accessed at:

[https://www.ine.es/en/inebaseDYN/flujos30310/docs/metoflujos\\_valores\\_absolutos\\_en.pdf](https://www.ine.es/en/inebaseDYN/flujos30310/docs/metoflujos_valores_absolutos_en.pdf)

The standardized methodological report is at:

<https://www.ine.es/dynt3/metadatos/en/RespuestaDatos.html?oe=30310>

---

For further information see **INEbase:** [www.ine.es/en/](http://www.ine.es/en/) Twitter: [@es\\_ine](https://twitter.com/es_ine)

All press releases at: [www.ine.es/en/prensa/prensa\\_en.htm](http://www.ine.es/en/prensa/prensa_en.htm)

**Press office:** Telephone numbers: (+34) 91 583 93 63 /94 08 – [gprensa@ine.es](mailto:gprensa@ine.es)

**Information Area:** Telephone number: (+34) 91 583 91 00 – [www.ine.es/infoine/?L=1](http://www.ine.es/infoine/?L=1)

---



## Economically Active Population Survey Fourth Quarter 2022

### National results

(Absolute figures in thousands and rates in percentage)

	Current quarter	Variation on previous quarter		Variation on same quarter, previous year	
		Difference	Percentage	Difference	Percentage
<b>1. Population aged 16 years and over by sex and labour status</b>					
<b>BOTH SEXES</b>					
<b>Population aged 16 years and over</b>	40.136,5	167,3	0,42	429,5	1,08
Active population	23.487,8	-38,1	-0,16	199,0	0,85
- Employed persons	20.463,9	-81,9	-0,40	278,9	1,38
- Unemployed persons	3.024,0	43,8	1,47	-79,9	-2,57
Inactive population	16.648,6	205,4	1,25	230,5	1,40
Activity rate	58,52	-0,34	-	-0,13	-
Unemployment rate	12,87	0,21	-	-0,45	-
<b>Population aged 16 to 64 years</b>	30.796,8	113,3	0,37	250,6	0,82
Activity rate (16-64)	75,19	-0,40	-	-0,02	-
Unemployment rate (16-64)	12,98	0,21	-	-0,45	-
Employment rate (16-64)	65,42	-0,50	-	0,33	-
<b>MALES</b>					
<b>Population aged 16 years and over</b>	19.483,8	84,0	0,43	191,2	0,99
Active population	12.378,7	-73,1	-0,59	99,6	0,81
- Employed persons	10.977,7	-137,4	-1,24	146,8	1,36
- Unemployed persons	1.401,0	64,2	4,80	-47,2	-3,26
Inactive population	7.105,1	157,1	2,26	91,6	1,31
Activity rate	63,53	-0,65	-	-0,11	-
Unemployment rate	11,32	0,58	-	-0,48	-
<b>Population aged 16 to 64 years</b>	15.366,0	58,3	0,38	107,9	0,71
Activity rate (16-64)	79,37	-0,74	-	0,09	-
Unemployment rate (16-64)	11,42	0,58	-	-0,47	-
Employment rate (16-64)	70,30	-1,12	-	0,45	-
<b>FEMALES</b>					
<b>Population aged 16 years and over</b>	20.652,7	83,4	0,41	238,3	1,17
Active population	11.109,2	35,0	0,32	99,5	0,90
- Employed persons	9.486,2	55,5	0,59	132,1	1,41
- Unemployed persons	1.623,0	-20,4	-1,24	-32,6	-1,97
Inactive population	9.543,5	48,3	0,51	138,9	1,48
Activity rate	53,79	-0,05	-	-0,14	-
Unemployment rate	14,61	-0,23	-	-0,43	-
<b>Population aged 16 to 64 years</b>	15.430,8	55,0	0,36	142,7	0,93
Activity rate (16-64)	71,02	-0,06	-	-0,11	-
Unemployment rate (16-64)	14,72	-0,23	-	-0,43	-
Employment rate (16-64)	60,56	0,11	-	0,21	-

### 2. Spanish population<sup>(1)</sup> aged 16 years and over by labour status

<b>SPANISH POPULATION AGED 16 YEARS AND OVER</b>	35.350,7	53,2	0,15	109,9	0,31
Active population	20.183,1	-116,5	-0,57	-10,8	-0,05
- Employed persons	17.775,3	-137,6	-0,77	38,7	0,22
- Unemployed persons	2.407,8	21,1	0,88	-49,5	-2,02
Inactive population	15.167,7	169,7	1,13	120,7	0,80
Activity rate	57,09	-0,42	-	-0,21	-
Unemployment rate	11,93	0,17	-	-0,24	-

<sup>(1)</sup> including dual nationality

26 January 2023

## National results

(Absolute figures in thousands and rates in percentage)

	Current quarter	Variation on previous quarter		Variation on same quarter, previous year		
		Difference	Percentage	Difference	Percentage	
<b>3. Foreign population aged 16 years and over by labour status</b>						
FOREIGN POPULATION AGED 16 YEARS AND OVER	4.785,7	114,1	2,44	319,6	7,16	
Active population	3.304,8	78,4	2,43	209,9	6,78	
- Employed persons	2.688,6	55,7	2,12	240,2	9,81	
- Unemployed persons	616,2	22,7	3,82	-30,3	-4,69	
Inactive population	1.481,0	35,7	2,47	109,7	8,00	
Activity rate	69,05	-0,01	-	-0,24	-	
Unemployment rate	18,65	0,25	-	-2,24	-	
<b>4. Employed persons by sex, age group and economic sector</b>						
BOTH SEXES	20.463,9	-81,9	-0,40	278,9	1,38	
16 to 19 years	153,4	-28,5	-15,68	30,5	24,82	
20 to 24 years	968,6	-50,6	-4,97	69,9	7,78	
25 to 29 years	1.753,1	8,9	0,51	39,5	2,30	
30 to 34 years	2.086,9	-13,6	-0,65	54,3	2,67	
35 to 39 years	2.370,2	-6,8	-0,29	-81,4	-3,32	
40 to 44 years	2.986,0	9,8	0,33	-59,2	-1,94	
45 to 49 years	3.167,8	-2,1	-0,07	47,4	1,52	
50 to 54 years	2.793,1	8,0	0,29	19,8	0,71	
55 and over	4.184,8	-6,9	-0,16	158,2	3,93	
MALES	10.977,7	-137,4	-1,24	146,8	1,36	
16 to 19 years	88,4	-10,4	-10,49	21,0	31,19	
20 to 24 years	529,9	-46,9	-8,13	48,1	9,99	
25 to 29 years	924,1	-15,3	-1,63	46,6	5,31	
30 to 34 years	1.096,1	-10,9	-0,98	47,9	4,57	
35 to 39 years	1.247,6	-10,5	-0,84	-43,1	-3,34	
40 to 44 years	1.579,2	-7,5	-0,47	-39,6	-2,45	
45 to 49 years	1.699,7	-11,4	-0,67	-13,7	-0,80	
50 to 54 years	1.518,6	-10,7	-0,70	9,9	0,66	
55 and over	2.294,1	-13,8	-0,60	69,6	3,13	
FEMALES	9.486,2	55,5	0,59	132,1	1,41	
16 to 19 years	65,0	-18,2	-21,85	9,5	17,09	
20 to 24 years	438,7	-3,7	-0,84	21,8	5,23	
25 to 29 years	829,0	24,2	3,01	-7,1	-0,85	
30 to 34 years	990,8	-2,7	-0,28	6,3	0,64	
35 to 39 years	1.122,6	3,7	0,33	-38,3	-3,30	
40 to 44 years	1.406,7	17,3	1,24	-19,6	-1,37	
45 to 49 years	1.468,1	9,3	0,64	61,1	4,34	
50 to 54 years	1.274,5	18,7	1,49	9,8	0,78	
55 and over	1.890,7	6,9	0,36	88,5	4,91	
TOTAL EMPLOYED PERSONS	20.463,9	-81,9	-0,40	278,9	1,38	
Agriculture	753,2	24,2	3,32	-86,9	-10,34	
Industry	2.801,8	-8,0	-0,28	36,6	1,32	
Construction	1.300,8	-28,0	-2,11	14,9	1,16	
Services	15.608,0	-70,1	-0,45	314,3	2,06	

## National results

(Absolute figures in thousands)

	Current quarter	Variation on previous quarter		Variation on same quarter, previous year	
		Difference	Percentage	Difference	Percentage

### 5. Employed persons by professional status, type of contract, public / private sectors and working hours

TOTAL EMPLOYED PERSONS	20.463,9	-81,9	-0,40	278,9	1,38
BY PROFESSIONAL STATUS					
Self-employed persons	3.086,8	-34,7	-1,11	-111,2	-3,48
- Employers	988,2	6,8	0,70	3,7	0,37
- Independent workers	1.991,1	-37,0	-1,82	-118,7	-5,63
- Cooperative members	29,8	6,1	25,80	2,5	9,06
- Family workers	77,7	-10,7	-12,07	1,3	1,69
Employees	17.371,5	-31,7	-0,18	397,3	2,34
- With a permanent job	14.256,8	366,1	2,64	1.591,1	12,56
- With a temporary job	3.114,7	-397,8	-11,32	-1.193,8	-27,71
Others	5,6	-15,5	-73,58	-7,1	-56,16
BY PUBLIC / PRIVATE SECTORS					
Public sector employed persons	3.526,2	20,0	0,57	50,7	1,46
Private sector employed persons	16.937,6	-101,9	-0,60	228,2	1,37
BY WORKING HOURS					
Full-time employed persons	17.682,2	-241,5	-1,35	235,2	1,35
Males	10.241,6	-175,7	-1,69	78,1	0,77
Females	7.440,5	-65,8	-0,88	157,1	2,16
Part-time employed persons	2.781,7	159,6	6,09	43,7	1,60
Males	736,1	38,3	5,49	68,7	10,29
Females	2.045,6	121,3	6,30	-25,0	-1,21

(\*) Private employment includes all persons in employment other than public employees. Namely: private employees, employers, independent workers, cooperative members, family workers and other professional status.

### 6. Unemployed persons by sex, age group, and economic sector

BOTH SEXES	3.024,0	43,8	1,47	-79,9	-2,57
16 to 19 years	114,8	-36,6	-24,15	-4,3	-3,60
20 to 24 years	349,3	-39,3	-10,11	15,9	4,76
25 to 54 years	2.035,9	86,2	4,42	-50,3	-2,41
55 and over	523,9	33,4	6,81	-41,2	-7,28
MALES	1.401,0	64,2	4,80	-47,2	-3,26
16 to 19 years	68,9	-14,5	-17,34	2,8	4,30
20 to 24 years	180,2	-12,4	-6,45	3,8	2,17
25 to 54 years	906,8	72,0	8,63	-42,7	-4,50
55 and over	245,0	19,1	8,43	-11,2	-4,37
FEMALES	1.623,0	-20,4	-1,24	-32,6	-1,97
16 to 19 years	45,9	-22,1	-32,51	-7,1	-13,46
20 to 24 years	169,1	-26,9	-13,72	12,1	7,67
25 to 54 years	1.129,1	14,2	1,27	-7,6	-0,67
55 and over	278,9	14,3	5,42	-30,0	-9,70
TOTAL UNEMPLOYED PERSONS	3.024,0	43,8	1,47	-79,9	-2,57
Agriculture	145,6	-13,7	-8,59	-15,5	-9,64
Industry	147,7	3,1	2,18	7,1	5,07
Construction	114,8	13,6	13,41	0,8	0,67
Services	1.108,8	39,7	3,72	101,1	10,03
Lost their job more than 1 year ago	1.184,2	40,6	3,55	-180,8	-13,24
First job seekers	322,9	-39,6	-10,93	7,4	2,36

## National results

(Absolute figures in thousands and rates in percentage)

	Current quarter	Variation on previous quarter		Variation on same quarter, previous year	
		Difference	Percentage	Difference	Percentage

### 7. Unemployment rate by relationship with the reference person

	Current quarter	Difference	Percentage	Difference	Percentage
TOTAL	12,87	0,21	-	-0,45	-
Reference person	11,18	0,61	-	0,03	-
Spouse or partner	9,94	0,09	-	-0,83	-
Child	22,68	-1,06	-	-1,42	-
Other relatives	19,17	3,63	-	-1,04	-
Unrelated persons	13,14	1,40	-	1,81	-

### 8. Household data

	Current quarter	Difference	Percentage	Difference	Percentage
TOTAL HOUSEHOLDS	19.200,7	70,5	0,37	210,8	1,11
Households with at least one active member	13.846,6	18,4	0,13	119,7	0,87
- All members employed	11.255,3	-38,9	-0,34	183,3	1,66
- All members unemployed	1.047,5	70,1	7,17	23,6	2,31
Households without any active population	5.354,1	52,1	0,98	91,1	1,73

## Mobility according to activity in current and previous quarter

Classification in previous quarter	Classification in current quarter			
	Total	Employed	Unemployed persons	Inactive
<b>BOTH SEXES</b>				
Total	40.136,5	20.463,9	3.024,0	16.648,6
Employed persons	20.506,0	19.094,3	688,9	722,7
Unemployed persons	3.041,6	795,4	1.616,8	629,4
Inactive	16.409,3	567,2	708,8	15.133,3
Not classifiable	179,6	7,0	9,4	163,3
<b>MALES</b>				
Total	19.476,5	11.007,9	1.375,0	7.093,6
Employed persons	11.129,0	10.419,3	355,2	354,6
Unemployed persons	1.341,2	354,4	741,1	245,7
Inactive	6.906,1	228,6	274,7	6.402,8
Not classifiable	100,3	5,7	4,0	90,6
<b>FEMALES</b>				
Total	20.660,0	9.456,0	1.649,0	9.555,0
Employed persons	9.376,9	8.675,0	333,8	368,2
Unemployed persons	1.700,4	441,0	875,7	383,7
Inactive	9.503,3	338,6	434,2	8.730,4
Not classifiable	79,4	1,3	5,3	72,7

Data obtained from the Statistics on Economically Active Population Flow

## Results by autonomous community and autonomous city

(Absolute figures in thousands)

	Current quarter	Variation on previous quarter		Variation on same quarter, previous year	
		Difference	Percentage	Difference	Percentage
<b>1. Population aged 16 years and over</b>					
TOTAL	40.136,5	167,3	0,42	429,5	1,08
Andalucía	7.138,7	26,5	0,37	63,6	0,90
Aragón	1.103,7	8,2	0,75	3,5	0,32
Asturias, Principado de	883,1	0,8	0,09	2,1	0,24
Balears, Illes	1.049,4	9,8	0,94	21,9	2,14
Canarias	1.962,6	4,7	0,24	24,0	1,24
Cantabria	501,5	1,0	0,20	3,4	0,68
Castilla y León	2.032,6	3,4	0,17	2,7	0,13
Castilla-La Mancha	1.714,9	2,4	0,14	17,0	1,00
Cataluña	6.435,8	37,5	0,59	81,1	1,28
Comunitat Valenciana	4.320,8	27,1	0,63	73,0	1,72
Extremadura	889,0	-1,2	-0,14	-2,6	-0,29
Galicia	2.345,6	2,6	0,11	4,8	0,20
Madrid, Comunidad de	5.708,6	31,3	0,55	106,0	1,89
Murcia, Región de	1.264,8	8,3	0,66	17,2	1,38
Navarra, Comunidad Foral de	549,4	0,9	0,17	6,2	1,15
País Vasco	1.840,3	0,9	0,05	1,6	0,09
Rioja, La	266,3	1,0	0,37	2,5	0,94
Ceuta	65,7	0,8	1,25	0,7	1,10
Melilla	63,6	1,3	2,01	0,6	1,03

## 2. Active population

TOTAL	23.487,8	-38,1	-0,16	199,0	0,85
Andalucía	4.026,1	-22,7	-0,56	-45,5	-1,12
Aragón	644,6	2,3	0,36	-2,7	-0,42
Asturias, Principado de	445,5	4,2	0,96	4,9	1,11
Balears, Illes	640,7	-53,6	-7,72	9,7	1,54
Canarias	1.159,8	8,0	0,69	2,7	0,23
Cantabria	272,1	-6,4	-2,31	-1,7	-0,61
Castilla y León	1.112,6	-9,3	-0,83	10,1	0,91
Castilla-La Mancha	1.019,6	5,0	0,50	16,3	1,63
Cataluña	3.906,2	-19,0	-0,48	12,6	0,32
Comunitat Valenciana	2.565,7	32,6	1,29	94,1	3,81
Extremadura	492,8	-7,6	-1,51	3,5	0,72
Galicia	1.235,9	-12,7	-1,02	9,5	0,78
Madrid, Comunidad de	3.608,2	37,0	1,04	75,1	2,13
Murcia, Región de	754,5	4,7	0,63	6,0	0,80
Navarra, Comunidad Foral de	325,9	4,4	1,38	6,3	1,98
País Vasco	1.039,3	-7,2	-0,68	-5,8	-0,56
Rioja, La	159,0	1,4	0,91	1,4	0,90
Ceuta	42,0	1,4	3,57	5,4	14,65
Melilla	37,3	-0,8	-2,14	-2,9	-7,21

\* Data below 5000 are subject to strong variations, due to sampling error

## Results by autonomous community and autonomous city

(Absolute figures in thousands)

	Current quarter	Variation on previous quarter		Variation on same quarter, previous year	
		Difference	Percentage	Difference	Percentage
<b>3. Employed persons</b>					
TOTAL	20.463,9	-81,9	-0,40	278,9	1,38
Andalucía	3.261,2	-19,4	-0,59	11,4	0,35
Aragón	584,0	-0,1	-0,01	-5,0	-0,85
Asturias, Principado de	381,4	-3,4	-0,87	-15,1	-3,81
Balears, Illes	570,8	-83,3	-12,73	33,8	6,30
Canarias	990,8	43,1	4,55	52,8	5,63
Cantabria	244,0	-10,6	-4,16	1,7	0,71
Castilla y León	1.014,3	-7,7	-0,75	25,7	2,60
Castilla-La Mancha	872,9	4,6	0,53	3,3	0,38
Cataluña	3.519,0	-40,9	-1,15	20,8	0,60
Comunitat Valenciana	2.218,6	27,3	1,25	102,7	4,86
Extremadura	406,0	-15,1	-3,59	9,4	2,36
Galicia	1.104,5	-9,2	-0,83	13,2	1,21
Madrid, Comunidad de	3.193,0	26,4	0,83	17,4	0,55
Murcia, Región de	657,2	16,4	2,57	5,4	0,83
Navarra, Comunidad Foral de	293,1	0,5	0,16	5,2	1,80
País Vasco	949,3	-10,4	-1,09	-7,7	-0,80
Rioja, La	145,3	0,4	0,30	4,2	3,00
Ceuta	29,2	1,1	3,98	2,4	8,87
Melilla	29,4	-1,8	-5,78	-2,7	-8,33

## 4. Unemployed persons

TOTAL	3.024,0	43,8	1,47	-79,9	-2,57
Andalucía	764,9	-3,4	-0,44	-56,8	-6,92
Aragón	60,7	2,3	4,01	2,3	3,91
Asturias, Principado de	64,1	7,6	13,41	20,0	45,30
Balears, Illes	69,9	29,7	73,92	-24,1	-25,67
Canarias	169,0	-35,2	-17,23	-50,1	-22,86
Cantabria	28,1	4,2	17,34	-3,4	-10,77
Castilla y León	98,3	-1,6	-1,62	-15,6	-13,69
Castilla-La Mancha	146,6	0,4	0,28	13,0	9,76
Cataluña	387,2	21,9	6,01	-8,2	-2,09
Comunitat Valenciana	347,2	5,3	1,55	-8,6	-2,42
Extremadura	86,8	7,5	9,50	-5,9	-6,32
Galicia	131,4	-3,5	-2,58	-3,7	-2,73
Madrid, Comunidad de	415,2	10,6	2,63	57,7	16,15
Murcia, Región de	97,3	-11,7	-10,77	0,6	0,60
Navarra, Comunidad Foral de	32,9	4,0	13,78	1,1	3,57
País Vasco	90,0	3,3	3,78	1,9	2,13
Rioja, La	13,7	1,0	7,98	-2,8	-17,03
Ceuta	12,8	0,3	2,65	3,0	(-)
Melilla	7,9	1,0	14,28	-0,2	-2,79

\* Data below 5,000 are subject to strong variations, due to sampling error

## Results by autonomous community and autonomous city

(Absolute figures in thousands and rates in percentage)

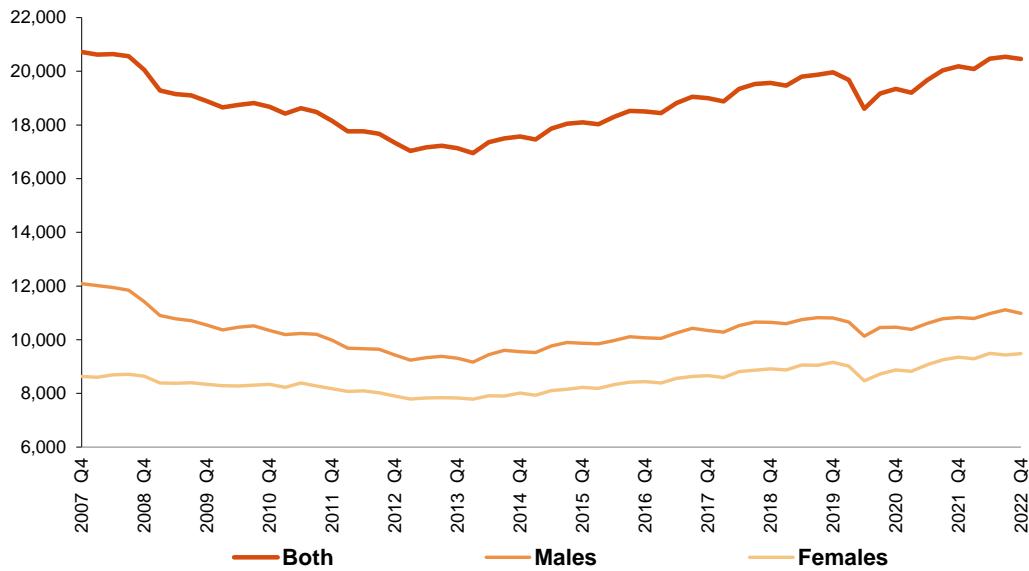
### 5. Employed and unemployed persons by sex. Activity and unemployment rates

	Both sexes				Males				Females			
	Employed persons	Unemployed persons	Activity rate	Unem. rate	Employed persons	Unemployed persons	Activity rate	Unem. Rate	Employed persons	Unemployed persons	Activity rate	Unem. Rate
TOTAL	20.463,9	3.024,0	58,52	12,87	10.977,7	1.401,0	63,53	11,32	9.486,2	1.623,0	53,79	14,61
Andalucía	3.261,2	764,9	56,40	19,00	1.808,3	356,0	62,02	16,45	1.453,0	408,9	51,02	21,96
Aragón	584,0	60,7	58,41	9,41	317,1	25,6	63,59	7,48	266,9	35,0	53,46	11,60
Asturias, Principado de	381,4	64,1	50,45	14,39	196,2	33,0	54,76	14,39	185,2	31,1	46,56	14,39
Baleares, Illes	570,8	69,9	61,05	10,91	311,8	35,5	66,98	10,23	259,0	34,3	55,25	11,70
Canarias	990,8	169,0	59,09	14,57	539,0	79,7	64,35	12,88	451,8	89,4	54,05	16,51
Cantabria	244,0	28,1	54,26	10,34	131,0	11,6	58,75	8,11	113,0	16,6	50,04	12,79
Castilla y León	1.014,3	98,3	54,74	8,83	545,2	46,0	59,23	7,79	469,1	52,3	50,40	10,02
Castilla-La Mancha	872,9	146,6	59,45	14,38	504,1	62,9	66,10	11,09	368,8	83,7	52,80	18,50
Cataluña	3.519,0	387,2	60,69	9,91	1.827,7	196,4	65,03	9,70	1.691,2	190,8	56,64	10,14
Comunitat Valenciana	2.218,6	347,2	59,38	13,53	1.204,9	157,4	64,68	11,56	1.013,7	189,7	54,34	15,77
Extremadura	406,0	86,8	55,43	17,62	229,7	37,9	61,11	14,17	176,3	48,9	49,93	21,72
Galicia	1.104,5	131,4	52,69	10,63	568,5	61,8	56,17	9,81	536,0	69,6	49,49	11,49
Madrid, Comunidad de	3.193,0	415,2	63,21	11,51	1.651,3	174,7	67,54	9,57	1.541,7	240,5	59,31	13,49
Murcia, Región de	657,2	97,3	59,66	12,89	371,5	45,5	66,32	10,91	285,8	51,8	53,07	15,35
Navarra, Comunidad Foral de	293,1	32,9	59,33	10,09	156,5	16,7	64,12	9,66	136,5	16,2	54,70	10,58
País Vasco	949,3	90,0	56,47	8,66	503,7	44,5	62,15	8,11	445,6	45,5	51,25	9,27
Rioja, La	145,3	13,7	59,71	8,60	77,3	6,6	64,40	7,86	68,1	7,1	55,23	9,42
Ceuta	29,2	12,8	63,97	30,55	17,6	6,1	70,45	25,76	11,6	6,7	57,17	36,73
Melilla	29,4	7,9	58,60	21,20	16,3	3,0	63,40	15,59	13,0	4,9	54,16	27,27

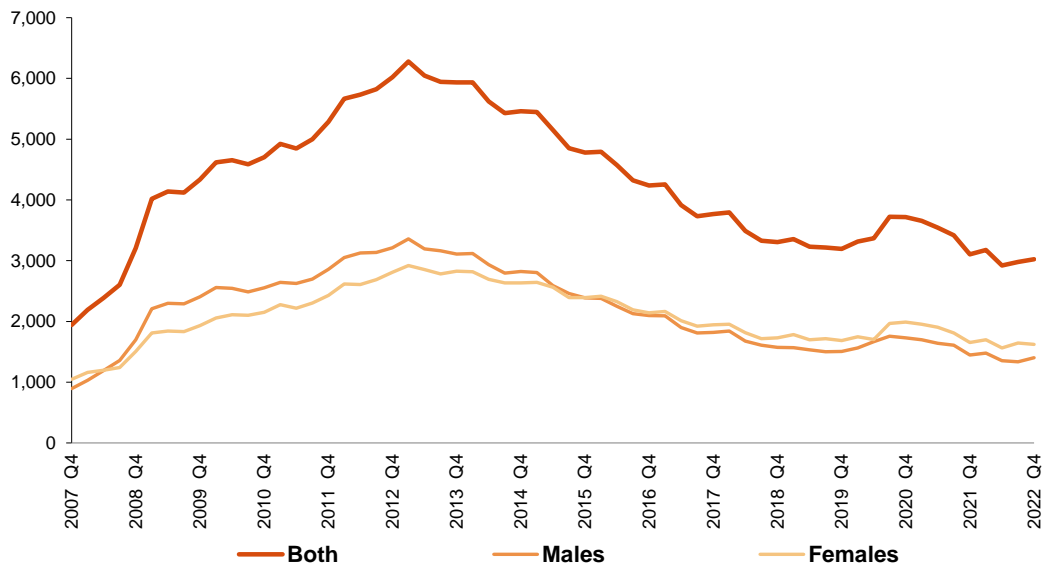
\* Data below 5,000 are subject to strong variations, due to sampling errors

**Employed and Unemployed by sex** EAPS  
Fourth Quarter 2022

**Employed.** Thousands



**Unemployed.** Thousands

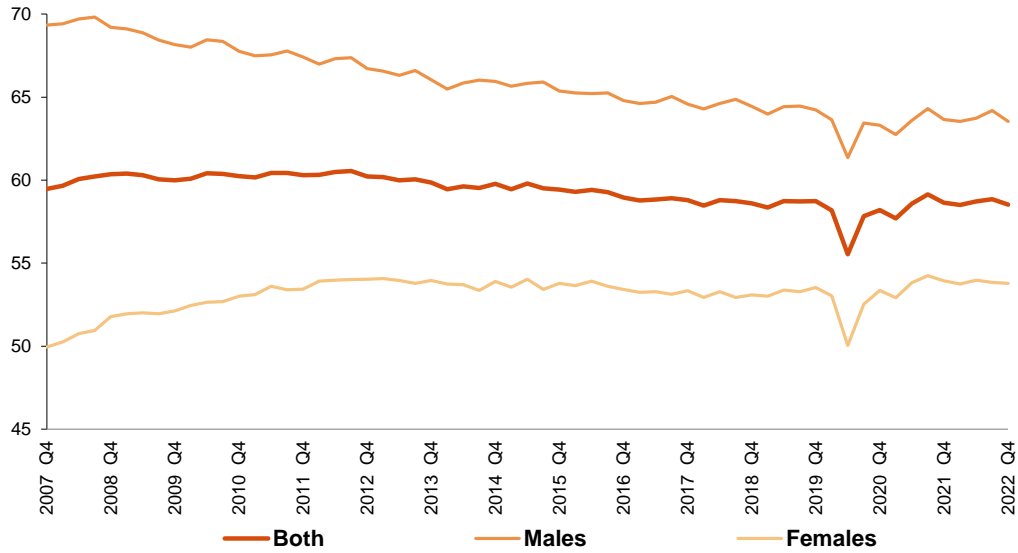




**Activity and unemployment rates by sex**  
Fourth Quarter 2022

EAPS

**Activity rate. Percentage**



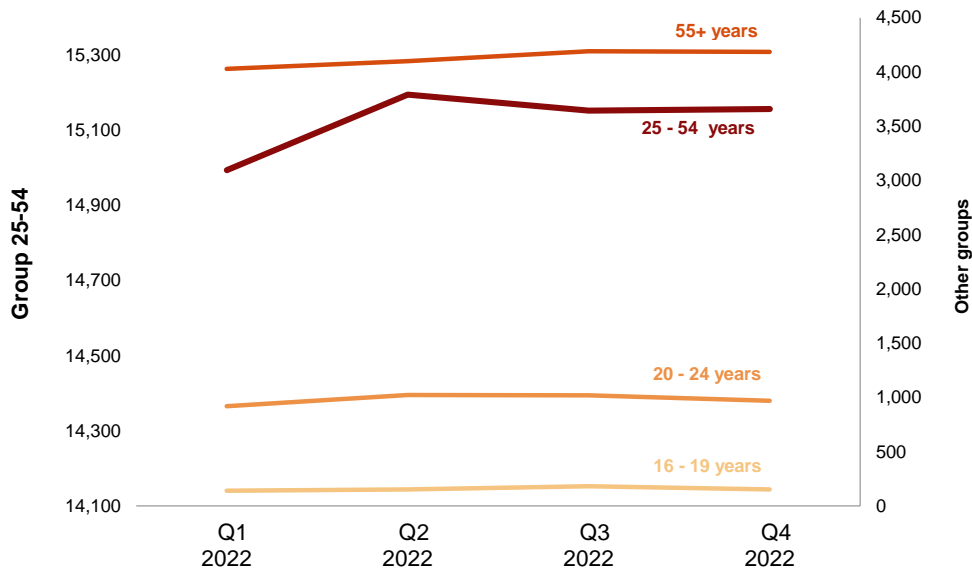
**Unemployment rate. Percentage**



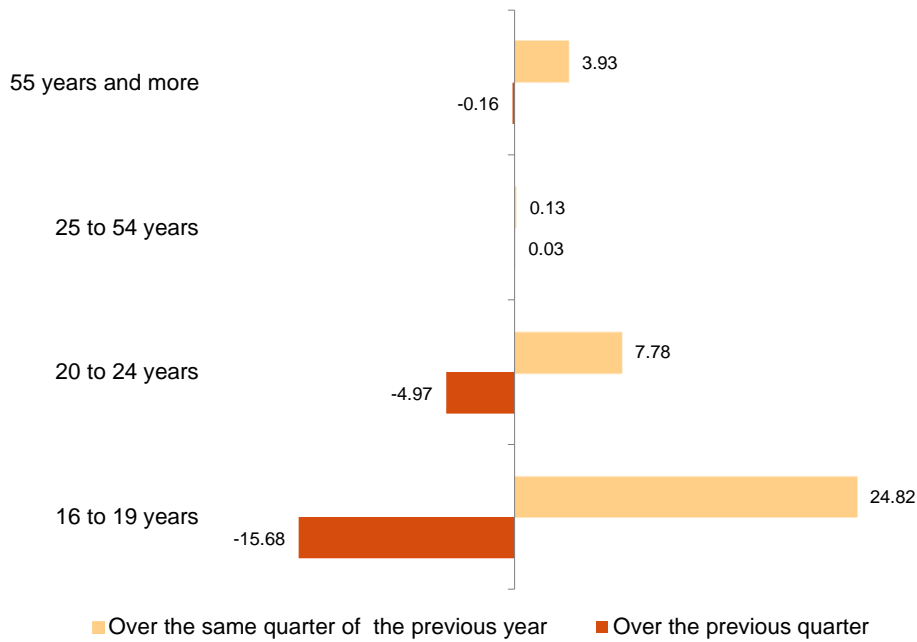
## Employment by age Fourth Quarter 2022

EAPS

Employment. Thousands



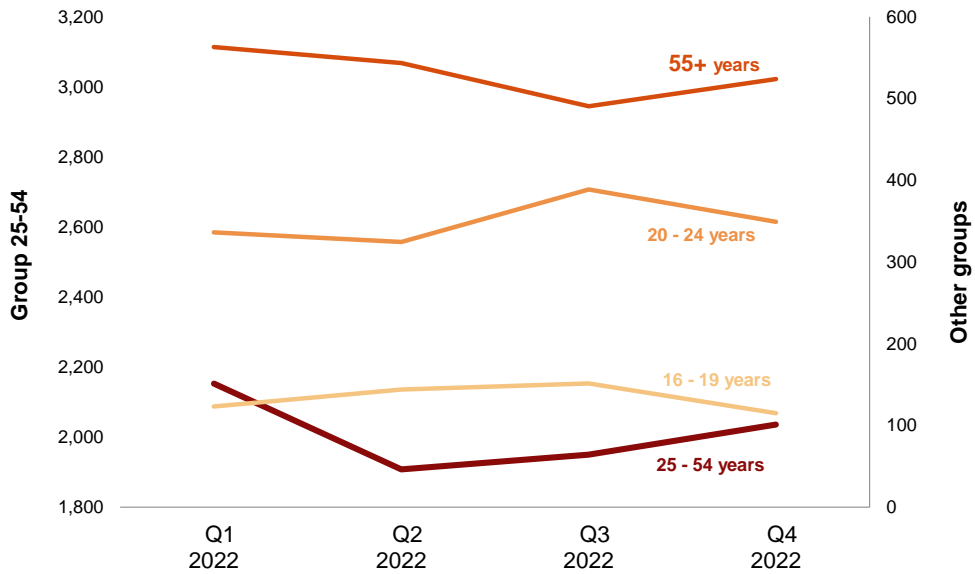
Variation of employment. Thousands



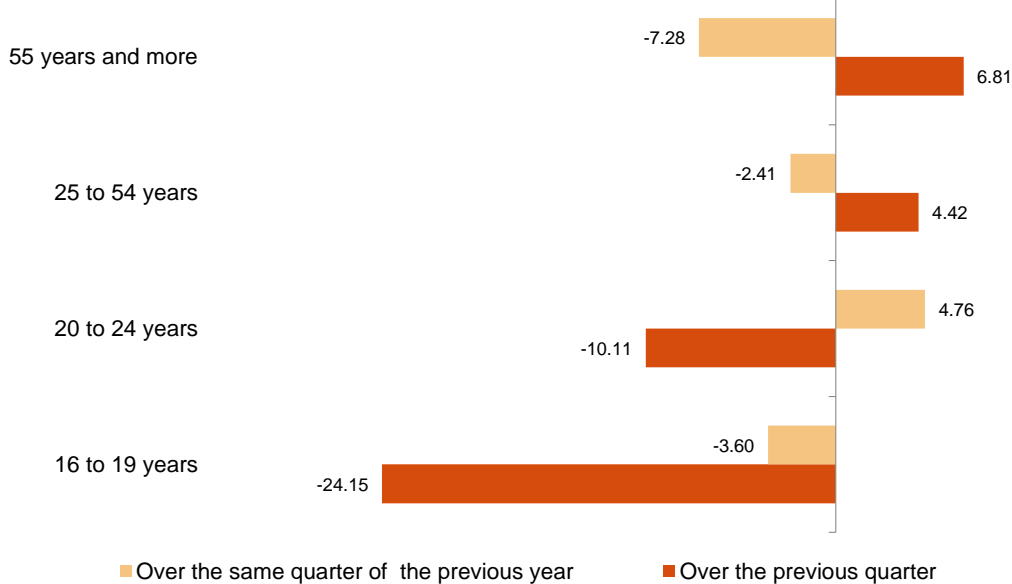
**Unemployment by age**  
Fourth Quarter 2022

EAPS

**Unemployment.** Thousands



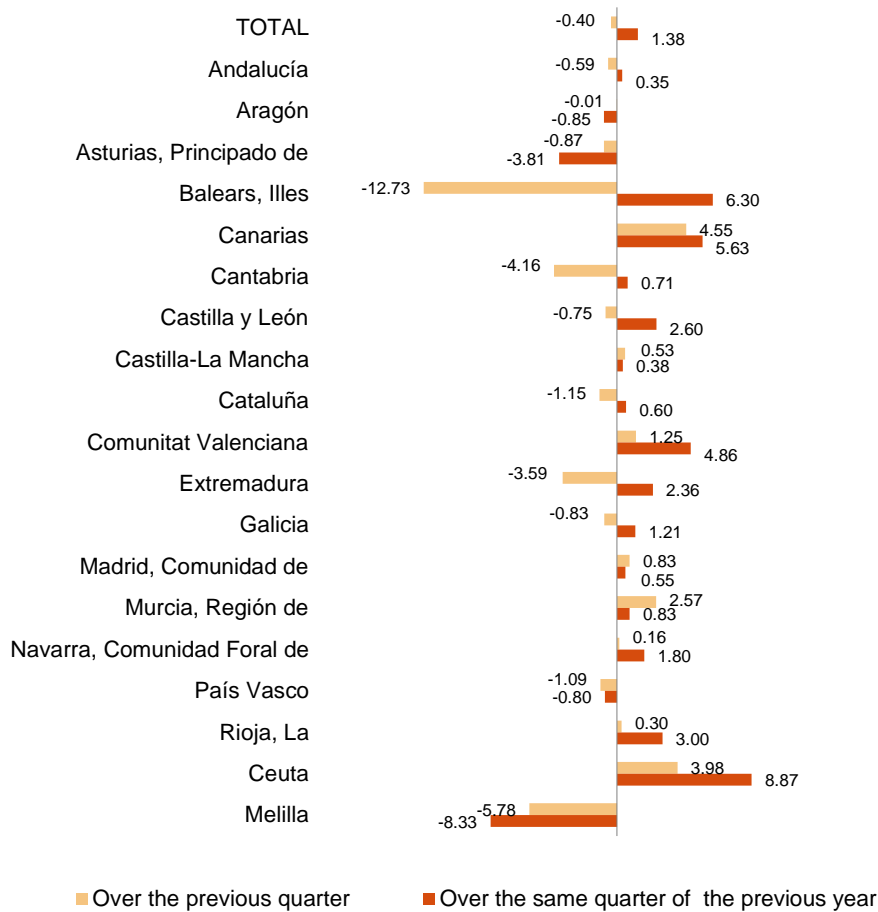
**Variation of unemployment.** Thousands



Fourth Quarter 2022

EAPS

**Variation of employment.** Percentage



**Unemployment rate** Percentage  
(Spain= 12.87 %)

