

29 June 2010

Retail Trade Indices (RTI). Base 2005
May 2010. *Provisional data*

Main Results

- The **General Retail Trade Index** registers an **interannual variation of –1.8%** in May, six tenths higher than that registered in April.
- The **average rate** of retail sales stands at **–1.3%** in the first five months of the year.
- **Large chain stores are the only distribution class with an increase in sales** as compared with the same month of the previous year, with a rate of 0.4%.
- **Employment** in the retail sector **decreases 1.5%** as compared with May 2009.
- Cantabria, Castilla y León and Comunidad de Madrid are the only **Autonomous Communities** to present an increase in sales. Employment increases in Principado de Asturias and in Castilla y León.

Evolution of trade in general, and by type of product

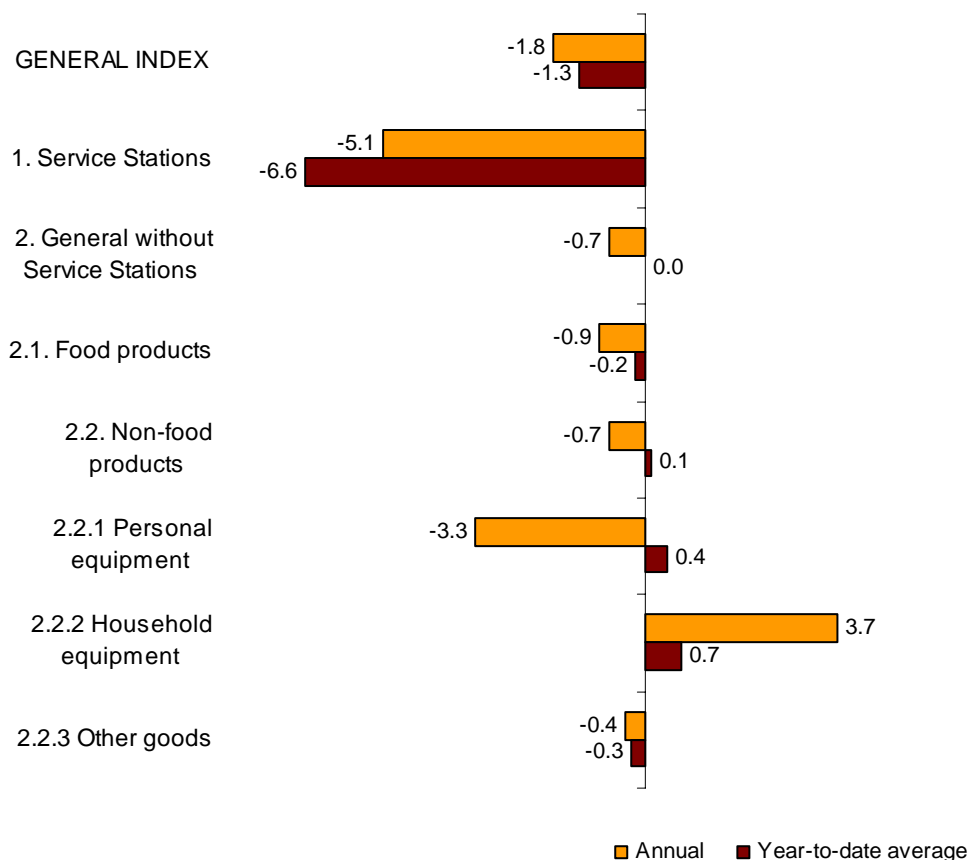
Sales in retail trade at constant prices (that is, after eliminating the prices' effect) registered an interannual rate of –1.8% in May 2010, indicating an increase of six tenths as compared with the rate registered in April.

Sales, excluding service stations, presented an annual rate, in constant terms, of –0.7%. The breakdown of these sales by type of product showed a decrease of 0.9% in food products and of 0.7% in non-food products. Among the latter, only the sales of Household Equipment increased (3.7%).

In turn, sales in service stations, after adjusting for the prices' effect, decreased 5.1%, as compared with May 2009.

The average rate of General Retail Trade Index for the first five months of the year decreased 1.3% as compared with the same period the previous year. This rate was one tenth less than the average for the first four months of the year.

Annual and average rates at constant prices General index and by type of product



Evolution of trade, by distribution class

Large chain stores were the only distribution class which experienced an increase in sales in May (0.4%). *Department stores* (-2.9%) presented the greatest decreases.

In the first five months of 2010, *Large chain stores* presented a positive average rate. In turn, *Department stores* showed no variation as compared with the same period the previous year, and *Small chain stores* and *Single retail stores* presented negative average rates.

National indices by distribution class

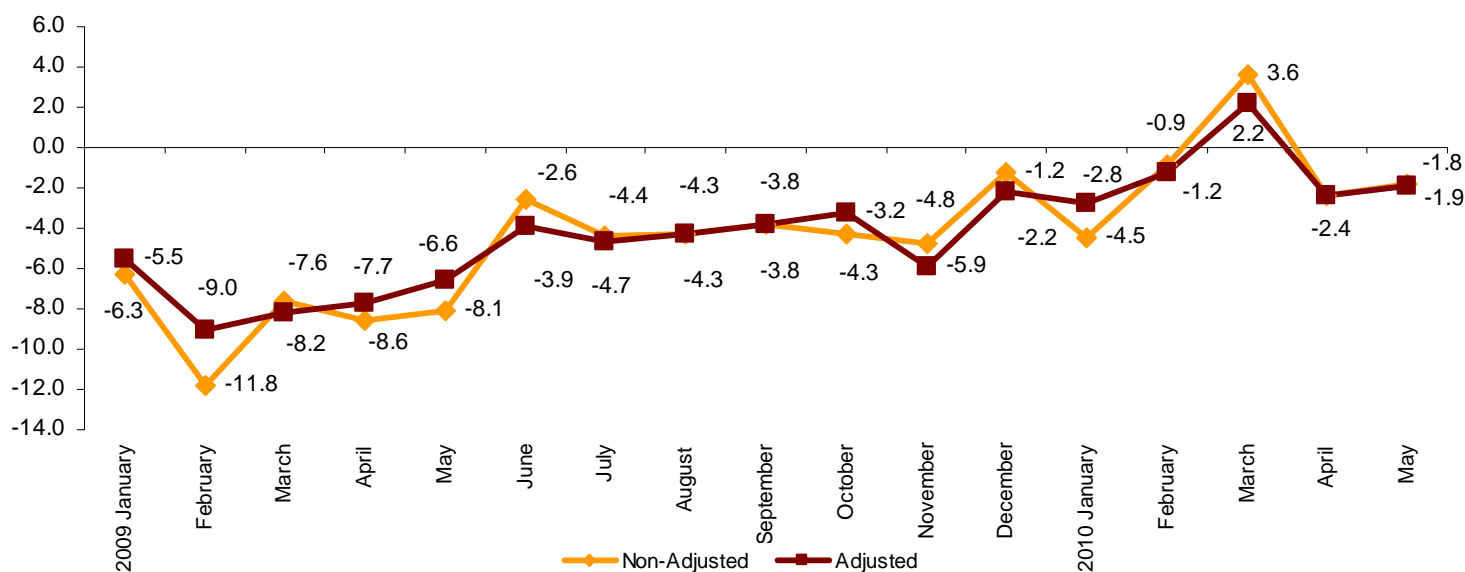
	Deflated Index	% variation	
		Annual	Year-to-date average
GENERAL INDEX	88.1	-1.8	-1.3
1. Service Station Index	94.9	-5.1	-6.6
2. General Index without Service Stations	88.3	-0.7	0.0
2.1. Single retail stores	83.5	-1.7	-1.4
2.2. Small chain stores	83.1	-1.9	-3.0
2.3. Large chain stores	109.5	0.4	2.4
2.4. Department stores	81.7	-2.9	0.0

Evolution of trade, adjusted for the calendar effect

After adjusting for the calendar effect, that is, the difference between the number of working days in a given month in different years, the General Retail Trade Index at constant prices registered a rate of **-1.9%** in May. The Interannual variation of the adjusted index stood half a point higher than that registered in April.

Annual evolution of the deflated RTI

Adjusted and Non-adjusted General Index



Evolution of employment, by distribution class

The employment index in the retail trade sector registered an annual rate of **-1.5%** in May, two tenths above that recorded in April.

Employment decreased in all of the distribution classes. *Small chain stores* presented the greatest decrease, with **-3.9%**. In *Service stations*, employment increased **0.1%** as compared with May 2009.

In the retail sector group, the average employment rate decreased **2.1%** in the first five months of the year, as compared with the same period the previous year.

National employment indices

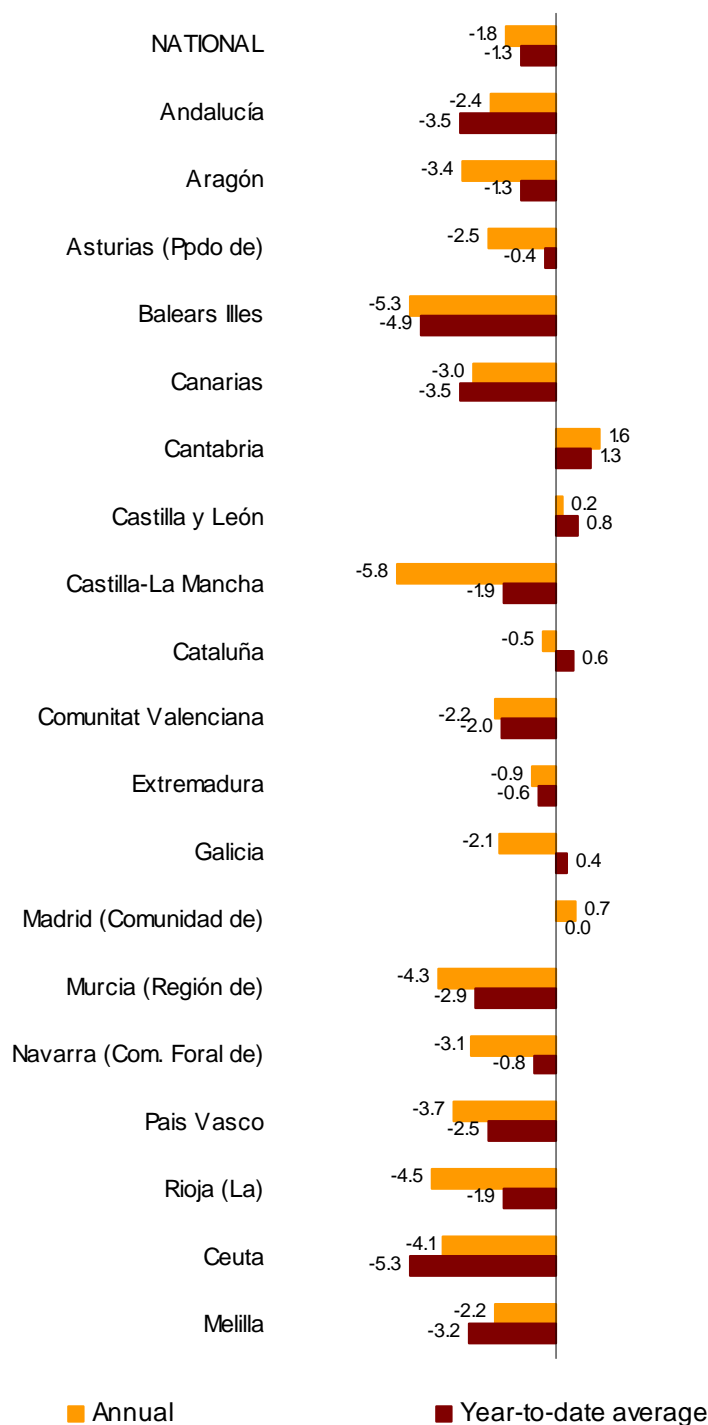
	Deflated Index	% variation	
		Annual	Year-to-date average
GENERAL INDEX	97.4	-1.5	-2.1
1. Service Station Index	99.8	0.1	-0.6
2. General Index without Service Stations	97.3	-1.6	-2.1
2.1. Single retail stores	96.6	-1.2	-1.6
2.2. Small chain stores	91.3	-3.9	-4.1
2.3. Large chain stores	110.4	-1.2	-1.9
2.4. Department stores	94.6	-0.1	-3.1

Results by Autonomous Community. Variation rates in sales

In May 2010, all of the Autonomous Communities experienced a decrease in retail trade sales at constant prices, except Cantabria (1.6%), Comunidad de Madrid (0.7%) and Castilla y León (0.2%).

Castilla-La Mancha (-5.8%) and Illes Balears (-5.3%) were the Communities that registered the greatest decreases.

Annual and average rates at constant prices General index by Autonomous Community

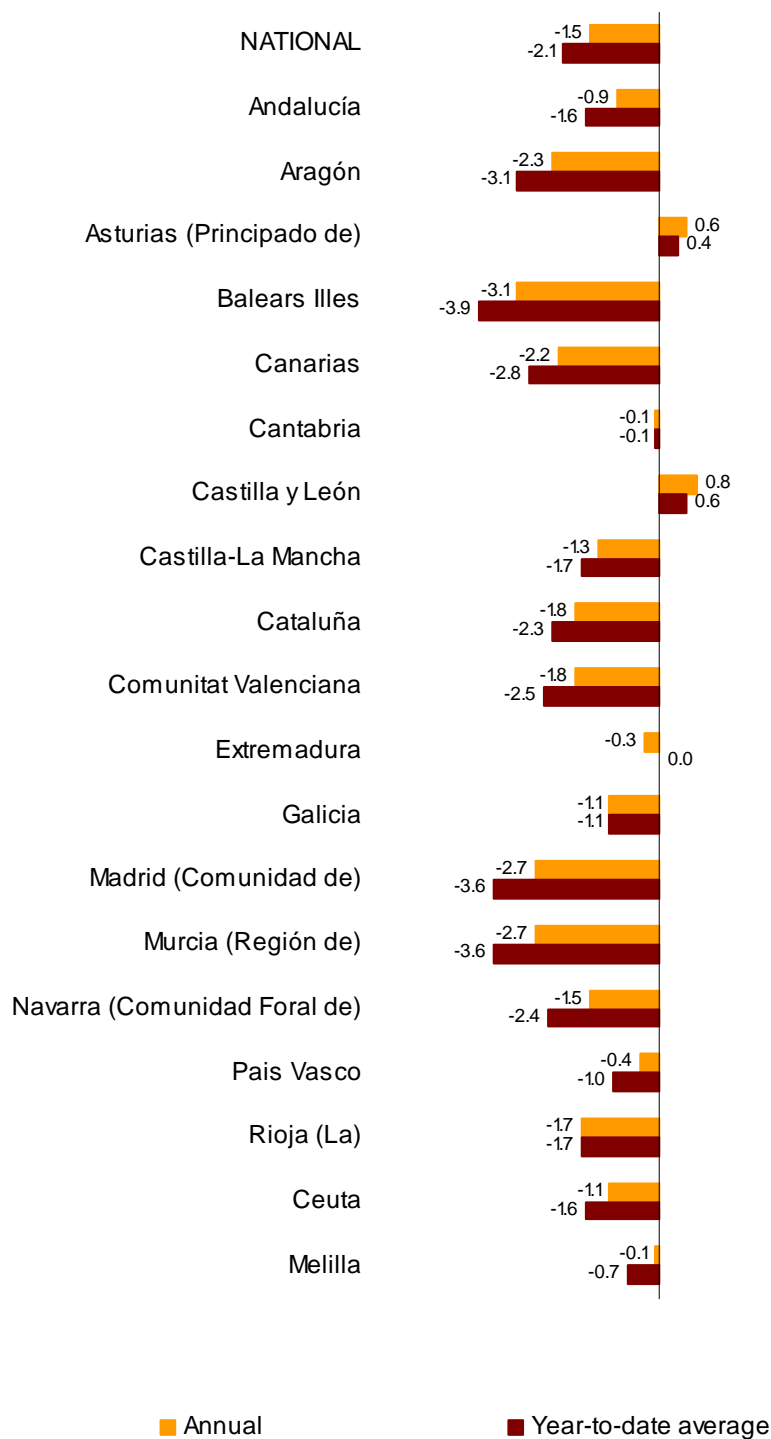


Results by Autonomous Community. Employment variation rates

Employment in retail trade increased in May in the Communities of Castilla y León (0.8%) and Principado de Asturias (0.6%).

The remaining Communities experienced a decrease in employment, with Illes Balears (-3.1%) recording the greatest decrease.

Annual and average rates of the employment index General index by Autonomous Community



Retail Trade Index. Base 2005

May 2010

Provisional data

1. National indices

	Index	% variation		Deflated index	% variation	
		Annual	Year-to-date average		Annual	Year-to-date average
GENERAL INDEX	98.7	1.0	0.8	88.1	-1.8	-1.3
1. Service Stations	116.3	16.5	13.8	94.9	-5.1	-6.6
2. General Index without Service Stations	97.3	-0.2	-0.2	88.3	-0.7	0.0
2.1. Food products	107.2	-0.5	-0.5	94.1	-0.9	-0.2
2.2. Non-food products	91.4	0.0	-0.1	85.6	-0.7	0.1
2.2.1 Personal equipment	96.6	-3.8	-0.6	90.2	-3.3	0.4
2.2.2 Household equipment	78.8	3.9	1.1	71.5	3.7	0.7
2.2.3 Other goods	98.2	0.2	-0.6	92.0	-0.4	-0.3

2. National Indices by distribution class

	Index	% variation		Deflated index	% variationr	
		Annual	Year-to-date average		Annual	Year-to-date average
GENERAL INDEX	98.7	1.0	0.8	88.1	-1.8	-1.3
1. Service Station Index	116.3	16.5	13.8	94.9	-5.1	-6.6
2. General Index without Service Stations	97.3	-0.2	-0.2	88.3	-0.7	0.0
2.1. Single retail stores	92.0	-1.2	-1.7	83.5	-1.7	-1.4
2.2. Small chain stores	91.6	-1.4	-3.3	83.1	-1.9	-3.0
2.3. Large chain stores	120.6	0.9	2.2	109.5	0.4	2.4
2.4. Department stores	90.0	-2.4	-0.3	81.7	-2.9	0.0

3. Department Store Indices

	Index	% variation		Deflated index	% variation	
		Annual	Year-to-date average		Annual	Year-to-date average
DEPARTMENT STORE INDEX	90.0	-2.4	-0.3	81.7	-2.9	0.0
1. Food products	91.6	-6.0	-5.5	80.4	-6.3	-5.2
2. Non-food products	89.2	-0.5	2.4	83.6	-1.2	2.7

4. National Indices. Adjusted for calendar effect

	Index	% variation		Deflated index	% variation	
		Annual	Year-to-date average		Annual	Year-to-date average
GENERAL INDEX	101.2	0.9	0.8	90.4	-1.9	-1.2
1. Service Stations	118.2	16.5	13.8	97.0	-5.2	-6.7
2. General Index without Service Stations	99.8	-0.3	-0.2	90.7	-0.9	0.0
2.1. Department Store Index	91.6	-2.5	-0.2	83.1	-3.0	0.1

5. Annual rates of National indices

	General Retail Trade Index				General Index without Service Stations			
	Current Prices		Constant Prices		Current Prices		Constant Prices	
	Original	Adjusted ¹	Original	Adjusted ¹	Original	Adjusted ¹	Original	Adjusted ¹
2009 May	-10.9	-9.5	-8.1	-6.6	-9.4	-7.9	-8.8	-7.3
June	-5.5	-6.8	-2.6	-3.9	-3.8	-5.1	-3.0	-4.3
July	-7.7	-8.0	-4.4	-4.7	-6.1	-6.4	-4.9	-5.2
August	-6.5	-6.5	-4.3	-4.3	-5.5	-5.5	-4.5	-4.5
September	-6.1	-6.1	-3.8	-3.8	-5.0	-5.0	-3.8	-3.8
October	-6.0	-4.8	-4.3	-3.2	-5.1	-4.0	-3.9	-2.8
September	-4.7	-5.9	-4.8	-5.9	-4.3	-5.4	-3.5	-4.7
December	-0.3	-1.2	-1.2	-2.2	-0.8	-1.7	-0.1	-1.1
2010 January	-3.0	-1.3	-4.5	-2.8	-3.8	-2.1	-3.2	-1.4
February	0.3	0.0	-0.9	-1.2	-0.5	-0.8	0.2	-0.1
March *	5.8	4.3	3.6	2.2	4.9	3.4	5.3	3.8
April *	0.1	0.1	-2.4	-2.4	-1.1	-1.1	-1.1	-1.1
May	1.0	0.9	-1.8	-1.9	-0.2	-0.3	-0.7	-0.9

¹ Index rates adjusted for calendar effects

* Revised figure

6. National Employment Indices by distribution class

	Index	% variation on		
		Previous month	Same month	Year-to-date average
GENERAL INDEX	97.4	0.1	-1.5	-2.1
1. Service Stations	99.8	0.6	0.1	-0.6
2. General Index without Service Stations	97.3	0.1	-1.6	-2.1
2.1. Single retail stores	96.6	0.1	-1.2	-1.6
2.2. Small chain stores	91.3	0.1	-3.9	-4.1
2.3. Large chain stores	110.4	0.5	-1.2	-1.9
2.4. Department stores	94.6	-0.1	-0.1	-3.1

7. General Retail Trade Indices of Autonomous Communities

	Index	% variation		Deflated index	% variation	
		Annual	Year-to-date average		Annual	Year-to-date average
NATIONAL INDEX	98.7	1.0	0.8	88.1	-1.8	-1.3
Andalucía	96.0	0.2	-1.7	85.8	-2.4	-3.5
Aragón	100.2	-0.6	0.6	89.2	-3.4	-1.3
Asturias (Principado de)	103.3	0.5	1.4	92.7	-2.5	-0.4
Balears (Illes)	96.8	-2.8	-2.8	86.9	-5.3	-4.9
Canarias	87.3	-1.1	-2.5	79.2	-3.0	-3.5
Cantabria	106.9	4.7	3.5	95.0	1.6	1.3
Castilla y León	104.0	3.3	3.0	92.6	0.2	0.8
Castilla-La Mancha	99.3	-2.6	0.2	88.9	-5.8	-1.9
Cataluña	100.7	2.5	3.0	89.3	-0.5	0.6
Comunitat Valenciana	92.5	0.2	-0.2	82.6	-2.2	-2.0
Extremadura	106.9	1.7	1.3	95.6	-0.9	-0.6
Galicia	100.5	0.5	2.4	90.2	-2.1	0.4
Madrid (Comunidad de)	101.4	3.8	2.3	91.3	0.7	0.0
Murcia (Región de)	96.1	-1.4	-0.7	84.8	-4.3	-2.9
Navarra (Comunidad Foral de)	106.9	0.1	1.5	95.6	-3.1	-0.8
País Vasco	102.6	-1.2	-0.7	91.2	-3.7	-2.5
Rioja (La)	96.1	-1.9	-0.1	85.0	-4.5	-1.9
Ceuta	106.4	-1.8	-3.5	94.0	-4.1	-5.3
Melilla	106.9	1.1	-0.4	93.5	-2.2	-3.2

8. General Indices without Service Stations, by Autonomous Community

	Index	% variation		Deflated index	% variation	
		Annual	Year-to-date average		Annual	Year-to-date average
NATIONAL INDEX	97.3	-0.2	-0.2	88.3	-0.7	0.0
Andalucía	96.0	0.2	-1.8	87.2	-0.1	-1.3
Aragón	100.4	-1.1	0.4	90.6	-2.0	0.4
Asturias (Principado de)	102.8	-0.7	0.6	93.8	-1.4	1.0
Balears (Illes)	96.7	-2.9	-2.9	88.4	-3.0	-2.6
Canarias	85.4	-2.1	-3.4	79.4	-1.0	-1.8
Cantabria	105.1	3.6	3.1	95.1	3.0	3.3
Castilla y León	103.0	2.6	2.5	93.0	1.6	2.4
Castilla-La Mancha	99.7	-3.9	-0.4	90.9	-5.0	-0.3
Cataluña	100.4	1.4	2.0	90.3	0.5	1.9
Comunitat Valenciana	91.3	-1.0	-0.8	83.0	-1.2	-0.4
Extremadura	103.8	0.5	0.4	94.2	-0.1	0.6
Galicia	98.9	-0.5	1.7	90.3	-0.8	2.1
Madrid (Comunidad de)	96.7	0.6	-0.8	88.5	-0.2	-0.7
Murcia (Región de)	96.1	-1.6	-0.7	86.1	-2.1	-0.5
Navarra (Comunidad Foral de)	104.3	-2.0	-0.3	94.6	-3.2	-0.5
País Vasco	101.1	-2.1	-1.2	91.1	-2.7	-1.0
Rioja (La)	96.2	-2.9	-0.8	86.3	-3.5	-0.6
Ceuta	108.6	-0.9	-2.6	98.4	-0.8	-2.1
Melilla	107.1	1.9	-0.2	95.9	1.0	-0.8

9. General Employment Indices of Autonomous Communities

	Index	% variation on		
		Previous month	Same month previous year	Year-to-date average
NATIONAL INDEX	97.4	0.1	-1.5	-2.1
Andalucía	94.6	0.1	-0.9	-1.6
Aragón	96.3	0.0	-2.3	-3.1
Asturias (Principado de)	103.9	0.1	0.6	0.4
Balears (Illes)	95.5	2.3	-3.1	-3.9
Canarias	93.1	-0.6	-2.2	-2.8
Cantabria	102.5	0.0	-0.1	-0.1
Castilla y León	103.8	0.1	0.8	0.6
Castilla-La Mancha	97.5	0.3	-1.3	-1.7
Cataluña	96.5	0.2	-1.8	-2.3
Comunitat Valenciana	95.8	0.2	-1.8	-2.5
Extremadura	100.4	-0.8	-0.3	0.0
Galicia	101.2	-0.2	-1.1	-1.1
Madrid (Comunidad de)	98.2	0.4	-2.7	-3.6
Murcia (Región de)	100.3	-0.2	-2.7	-3.6
Navarra (Comunidad Foral de)	99.4	0.1	-1.5	-2.4
País Vasco	100.6	0.0	-0.4	-1.0
Rioja (La)	97.8	-0.1	-1.7	-1.7
Ceuta	100.7	-0.2	-1.1	-1.6
Melilla	100.7	0.3	-0.1	-0.7

10. General Employment Indices without Service Stations, by Autonomous Community

	Index	% variation on		
		Previous month	Same month previous year	Year-to-date average
NATIONAL INDEX	97.3	0.1	-1.6	-2.1
Andalucía	94.7	0.1	-0.9	-1.6
Aragón	96.3	0.0	-2.3	-3.1
Asturias (Principado de)	104.3	0.0	0.6	0.4
Balears (Illes)	95.4	2.4	-3.1	-3.9
Canarias	92.4	-0.6	-2.4	-3.1
Cantabria	102.4	-0.1	-0.3	-0.2
Castilla y León	104.4	0.0	1.1	0.8
Castilla-La Mancha	97.7	0.3	-1.4	-1.8
Cataluña	96.4	0.2	-1.8	-2.3
Comunitat Valenciana	95.7	0.2	-1.9	-2.5
Extremadura	100.7	-0.8	-0.2	0.2
Galicia	101.4	-0.3	-1.2	-1.1
Madrid (Comunidad de)	97.8	0.4	-2.8	-3.7
Murcia (Región de)	100.4	-0.3	-2.8	-3.6
Navarra (Comunidad Foral de)	99.2	0.0	-1.7	-2.6
País Vasco	100.4	0.0	-0.4	-1.1
Rioja (La)	97.7	0.0	-1.7	-1.7
Ceuta	100.9	-0.2	-1.1	-1.7
Melilla	100.9	0.3	-0.1	-0.7

For further information see INEbase - www.ine.es/en/welcome_en.htm All press releases at: www.ine.es/en/prensa/prensa_en.htm

Press Office: Telephone numbers: 91 583 93 63 / 94 08

Fax: 91 583 90 87 - gprensa@ine.es

Information Area: Telephone number: 91 583 91 00

Fax: 91 583 91 58 - www.ine.es/infoine