

29 June 2011

## **Retail Trade Indices (RTI). Base 2005**

May 2011. *Provisional data*

### **Main results**

- The **General Retail Trade Index** at constant prices registers an **interannual variation of -5.8% in May**, almost four points lower than that registered in April.
- The **average rate** of retail sector sales stands at -5.0% during the first five months of the year, as compared with the same period of 2010.
- **All of the distribution classes** present decreased in sales except **Large chain stores**, which remained unchanged, as compared with the same month of 2010.
- **Employment** in the retail sector **decreases 0.4%** interannually.
- All **Autonomous Communities**, except three, present negative variations in their retail sales, as compared with May last year. Employment falls in eleven of them.

### **Evolution of trade, in general and by type of product**

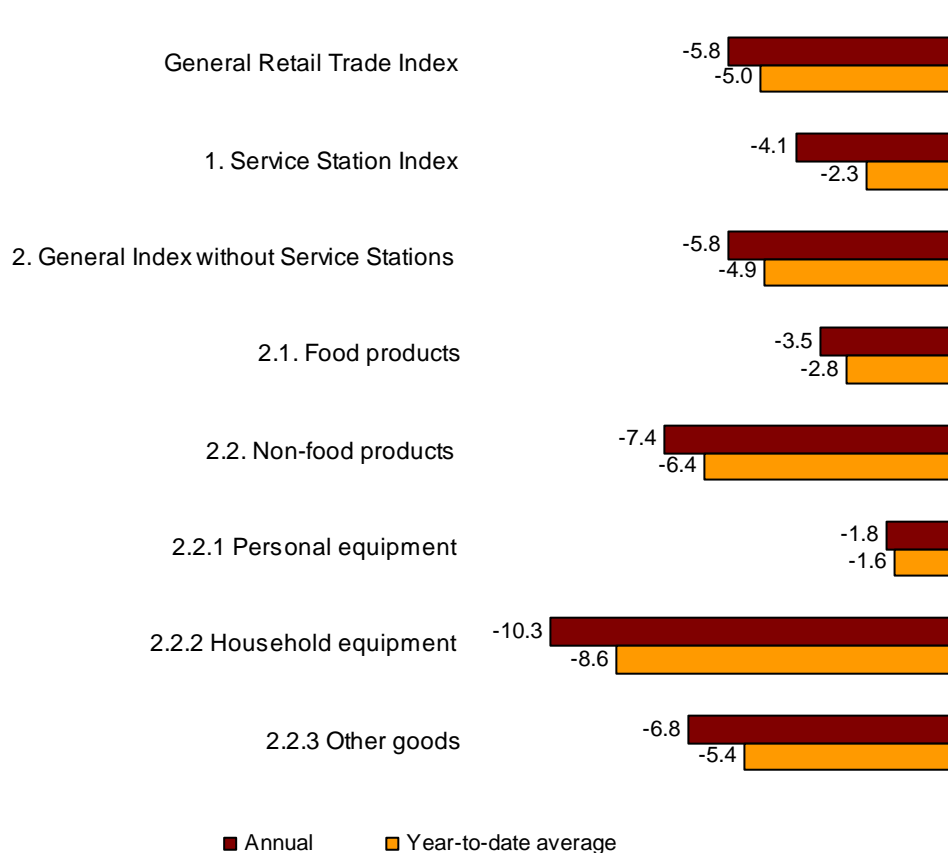
Sales in retail trade at constant prices (that is, after eliminating the prices' effect) registered an interannual variation of -5.8% in May 2011, indicating a decrease of 3.7 points, as compared with the rate from April.

Sales, excluding service stations, presented an annual rate of -5.8%, in constant terms. The breakdown of these sales by type of product showed a decrease in food products (-3.5%) whereas it registered a decrease in non-food products, -7.4%. Among the latter, Household equipment (-10.3%) registered the greatest decrease.

In turn, sales in service stations, after adjusting the prices' effect, decreased 4.1%, as compared with May 2010.

The average rate of the General Retail Trade Index during the first five months of the year presented a -5.0% variation, as compared with the same period last year. This rate stood two tenths below that registered in April.

**Annual and average rates at constant prices  
General index and by type of product**



**Evolution of trade, by distribution class**

All of the distribution classes, except *Large chain store*, present a decrease in sales in May, as compared with the same month of 2010. *Small chain stores* (-8.6%) and *Department stores* (-8.5%) presented the greatest decreases.

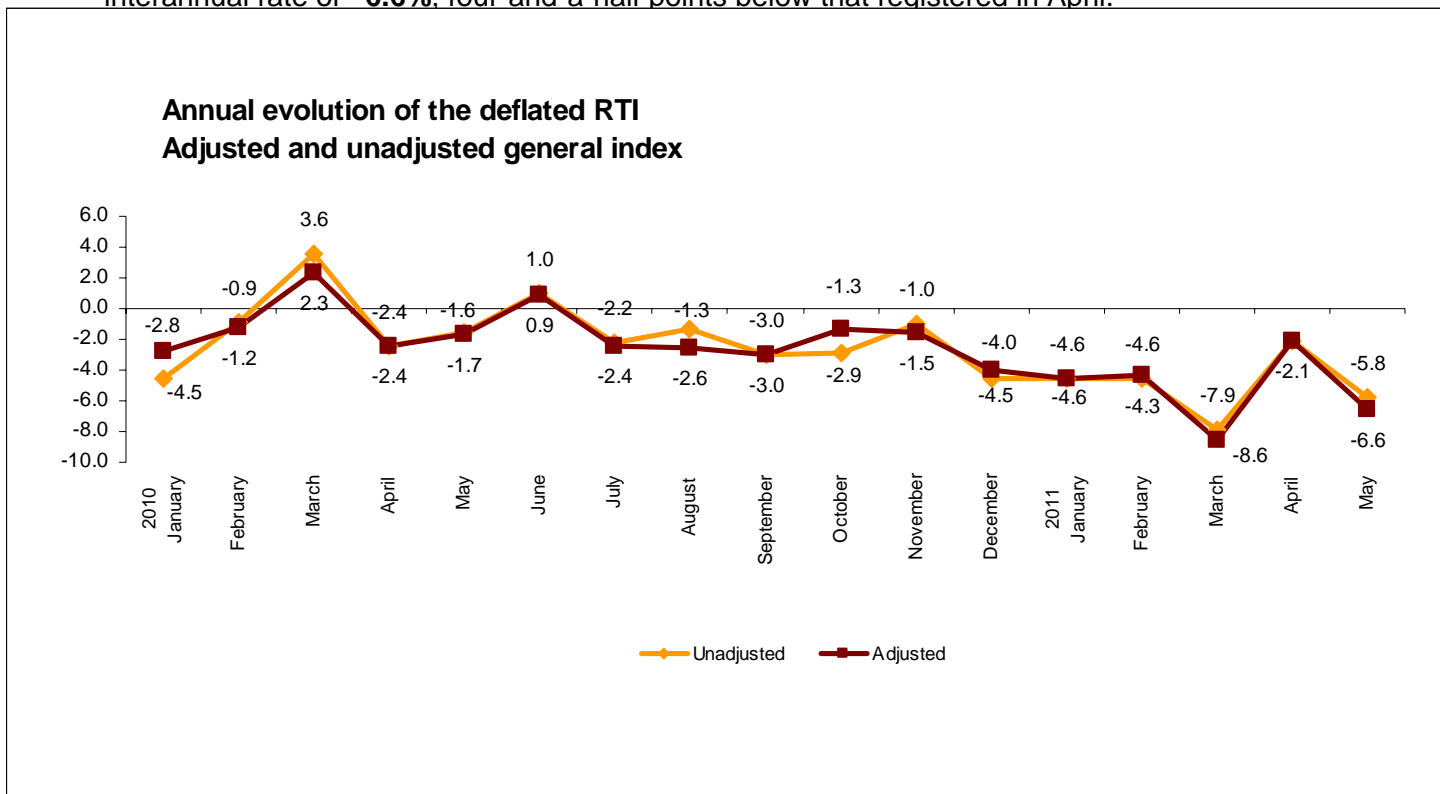
During the first five months of the year, the average sales had a negative variation in all distribution classes, as compared with the same period last year, except in *Large chain stores*, which registered an increase of 0.4%.

**National Indices by distribution class**

	Deflated Index	% variation	
		Annual	Year-to-date average
<b>General Retail Trade Index</b>	<b>83.1</b>	<b>-5.8</b>	<b>-5</b>
1. Service Station Index	91.5	-4.1	-2.3
2. General Index without Service Stations	83.3	-5.8	-4.9
2.1. Single retail stores	78.2	-6.7	-6.8
2.2. Small chain stores	75.8	-8.6	-5.7
2.3. Large chain stores	109.8	0.0	0.4
2.4. Department stores	74.5	-8.5	-6.8

### Evolution of trade, adjusted for the calendar effect

After adjusting for the calendar effect, that is, the difference between the number of working days in a given month in different years, the Retail Trade Index presented an adjusted interannual rate of **-6.6%**, four-and-a-half points below that registered in April.



### Evolution of employment, by distribution class

The employment index in the retail trade sector in May showed an annual rate of **-0.4%**, two tenths below that registered in April. Employment decreased **0.7%** in *Service stations*.

By distribution class, *Large chain stores* were the only distribution class with a positive interannual rate (**1.0%**).

In the retail sector as a whole, average employment registered a rate of **-0.4%** in the first five months of the year, as compared with the same period the previous year.

### National Employment Indices

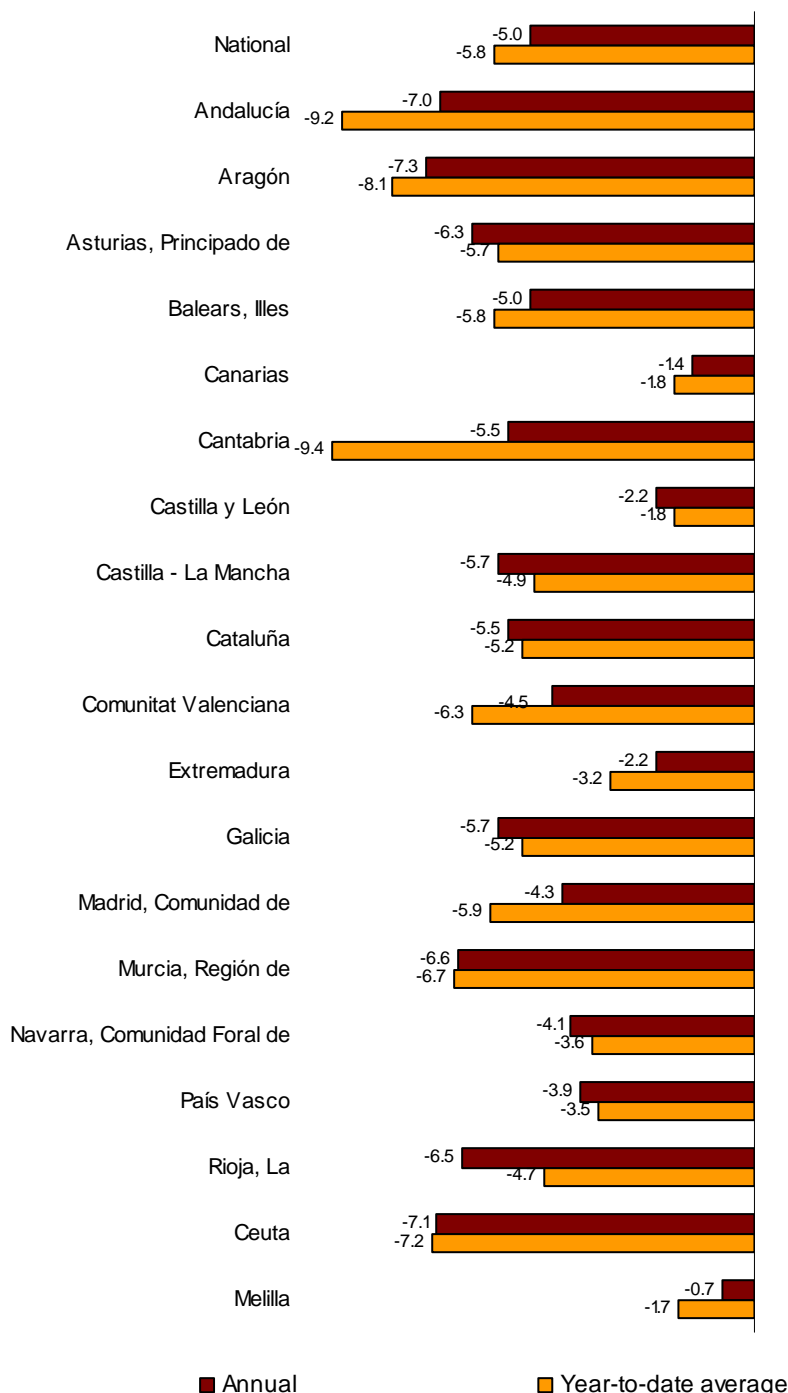
	Deflated Index	% variation	
		Annual	Year-to-date average
<b>General Retail Trade Index</b>	<b>97.1</b>	<b>-0.4</b>	<b>-0.4</b>
1. Service Station Index	99.3	-0.7	-0.5
2. General Index without Service Stations	97.0	-0.4	-0.4
2.1. Single retail stores	96.6	-0.1	-0.1
2.2. Small chain stores	89.8	-1.8	-1.7
2.3. Large chain stores	111.5	1.0	1.2
2.4. Department stores	93.0	-1.7	-1.9

**Results by Autonomous Community. Variation rates in sales**

Retail sales decreased in the interannual rate in all Autonomous Communities, except in Cantabria (−9.4%) and Andalucía (−9.2%).

Canarias and Castilla y León (both with −1.8%) were the Communities that registered the greatest decreases.

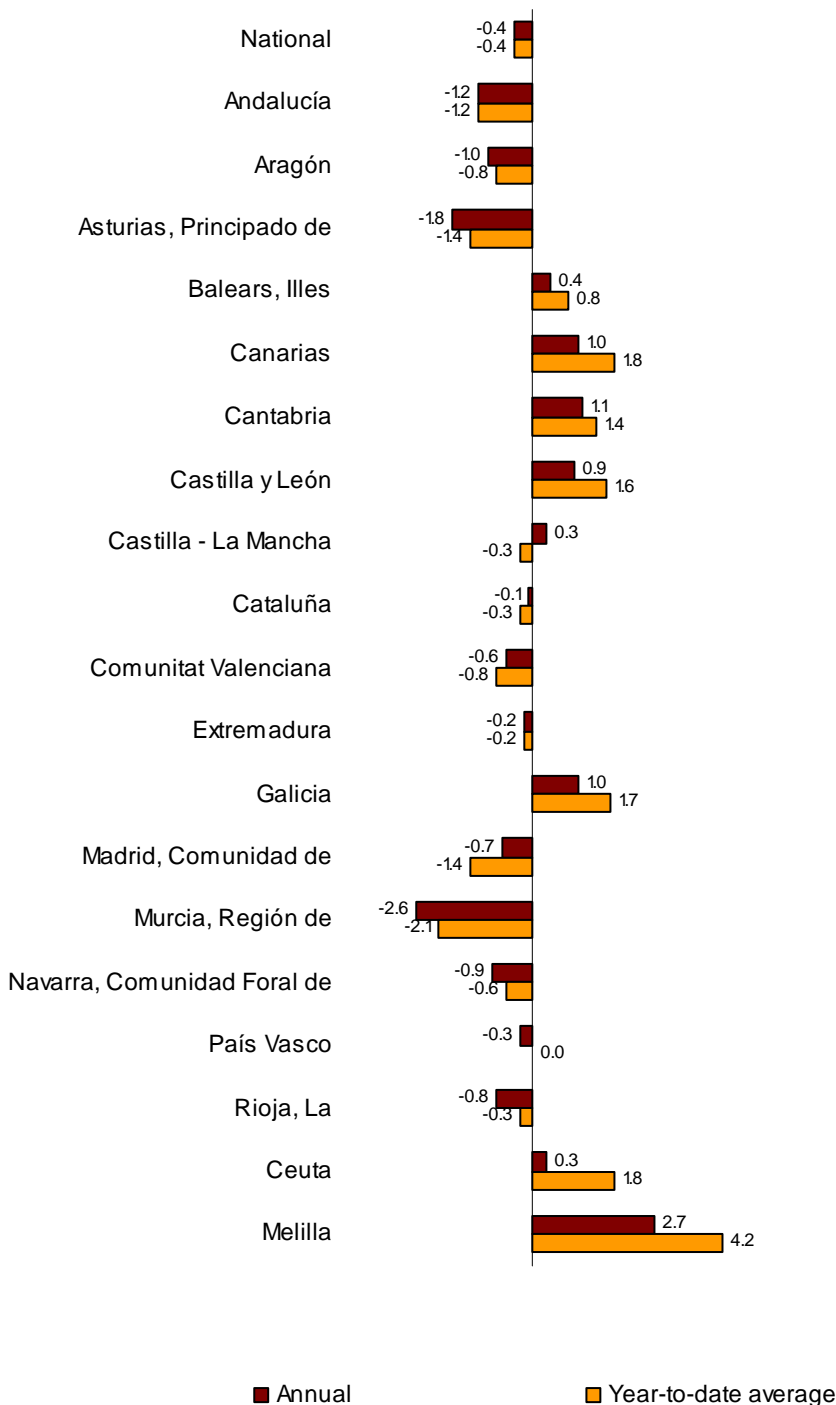
**Annual and average rates at constant prices  
General index by Autonomous City and Community**



**Results by Autonomous Community. Employment variation rates**

Employment in retail trade decreased in eleven Autonomous Communities. Región de Murcia (-2.1%), Comunidad de Madrid and Principado de Asturias (both with -1.4%) and Andalucía (-1.2%) presented the greatest decreases.

**Annual and average rates of the employment index  
General index by Autonomous City and Community**



## Retail Trade Index. Base 2005

May 2011

Provisional data

### 1. National indices

	Index	% variation		Deflated index	% variation	
		Annual	Year-to-date average		Annual	Year-to-date average
<b>General Retail Trade Index</b>	<b>97.4</b>	<b>-1.4</b>	<b>-0.5</b>	<b>83.1</b>	<b>-5.8</b>	<b>-5.0</b>
1. Service Station Index	128.6	9.9	15.3	91.5	-4.1	-2.3
2. General Index without Service Stations	95.0	-2.5	-1.9	83.3	-5.8	-4.9
2.1. Food products	108.0	0.5	0.6	91.0	-3.5	-2.8
2.2. Non-food products	87.1	-4.7	-3.6	79.3	-7.4	-6.4
2.2.1 Personal equipment	95.3	-1.3	-1.0	88.6	-1.8	-1.6
2.2.2 Household equipment	71.9	-9.0	-7.6	64.4	-10.3	-8.6
2.2.3 Other goods	94.0	-4.1	-2.6	85.6	-6.8	-5.4

### 2. National Indices by distribution class

	Index	% variation		Deflated index	% variation	
		Annual	Year-to-date average		Annual	Year-to-date average
<b>General Retail Trade Index</b>	<b>97.4</b>	<b>-1.4</b>	<b>-0.5</b>	<b>83.1</b>	<b>-5.8</b>	<b>-5.0</b>
1. Service Station Index	128.6	9.9	15.3	91.5	-4.1	-2.3
2. General Index without Service Stations	95.0	-2.5	-1.9	83.3	-5.8	-4.9
2.1. Single retail stores	89.1	-3.5	-3.8	78.2	-6.7	-6.8
2.2. Small chain stores	86.4	-5.4	-2.7	75.8	-8.6	-5.7
2.3. Large chain stores	125.1	3.4	3.6	109.8	0.0	0.4
2.4. Department stores	84.9	-5.3	-3.8	74.5	-8.5	-6.8

### 3. Department Store Indices

	Index	% variation		Deflated index	% variation	
		Annual	Year-to-date average		Annual	Year-to-date average
<b>Department Store Index</b>	<b>84.9</b>	<b>-5.3</b>	<b>-3.8</b>	<b>74.5</b>	<b>-8.5</b>	<b>-6.8</b>
1. Food products	88.7	-2.3	-1.5	74.8	-6.1	-4.8
2. Non-food products	83.1	-6.9	-4.9	75.6	-9.5	-7.7

#### 4. National Indices. Adjusted for calendar effect

	Index	% variation		Deflated index	% variation	
		Annual	Year-to-date average		Annual	Year-to-date average
<b>General Retail Trade Index</b>	<b>99.0</b>	<b>-2.2</b>	<b>-0.7</b>	<b>84.5</b>	<b>-6.6</b>	<b>-5.3</b>
1. Service Station Index	129.8	9.4	15.1	92.3	-4.5	-2.4
2. General Index without Service Stations	96.6	-3.3	-2.1	84.8	-6.5	-5.2
2.1. Department Store Index	85.8	-5.8	-4.0	75.3	-8.9	-6.9

## 5. Annual rates of National indices

	General Retail Trade Index				General Index without Service Stations			
	Current Prices		Constant Prices		Current Prices		Constant Prices	
	Original	Adjusted <sup>1</sup>	Original	Adjusted <sup>1</sup>	Original	Adjusted <sup>1</sup>	Original	Adjusted <sup>1</sup>
2010 May	1.2	1.1	-1.6	-1.7	-0.1	-0.2	-0.6	-0.7
June	3.2	3.1	1.0	0.9	2.3	2.2	1.5	1.4
July	0.2	0.0	-2.2	-2.4	-0.9	-1.1	-2.0	-2.2
August	0.7	-0.6	-1.3	-2.6	0.0	-1.4	-1.2	-2.6
September	-0.5	-0.5	-3.0	-3.0	-1.6	-1.6	-2.9	-2.9
October	0.0	1.6	-2.9	-1.3	-0.9	0.8	-2.6	-0.8
September	1.9	1.4	-1.0	-1.5	1.1	0.6	-0.7	-1.2
December	-0.6	-0.1	-4.5	-4.0	-1.7	-1.2	-3.9	-3.4
2011 January	-0.3	-0.3	-4.6	-4.6	-1.7	-1.7	-4.5	-4.5
February	0.1	0.4	-4.6	-4.3	-1.6	-1.4	-4.6	-4.3
March	-3.3	-4.0	-7.9	-8.6	-5.1	-5.8	-8.1	-8.8
April	2.8	2.8	-2.1	-2.1	1.8	1.8	-1.5	-1.5
May	-1.4	-2.2	-5.8	-6.6	-2.5	-3.3	-5.8	-6.5

<sup>1</sup> Index rates adjusted for calendar effects



## 6. National Employment Indices by distribution class

	Index	% variation on		
		Previous mo	Same month	Year-to-date average
<b>General Retail Trade Index</b>	<b>97.1</b>	<b>0.0</b>	<b>-0.4</b>	<b>-0.4</b>
1. Service Station Index	99.3	1.4	-0.7	-0.5
2. General Index without Service Stations	97.0	0.0	-0.4	-0.4
2.1. Single retail stores	96.6	0.1	-0.1	-0.1
2.2. Small chain stores	89.8	-0.3	-1.8	-1.7
2.3. Large chain stores	111.5	0.1	1.0	1.2
2.4. Department stores	93.0	-0.4	-1.7	-1.9

## 7. General Retail Trade Indices of Autonomous Cities and Communities

	Index	% variation		Deflated index	% variation	
		Annual	Year-to-date average		Annual	Year-to-date average
<b>National total</b>	<b>97.4</b>	<b>-1.4</b>	<b>-0.5</b>	<b>83.1</b>	<b>-5.8</b>	<b>-5.0</b>
Andalucía	91.3	-4.8	-2.3	77.8	-9.2	-7.0
Aragón	96.5	-3.8	-2.9	82.0	-8.1	-7.3
Asturias, Principado de	102.2	-1.0	-1.3	87.4	-5.7	-6.3
Balears, Illes	95.3	-1.7	-0.7	82.0	-5.8	-5.0
Canarias	88.2	1.8	2.4	77.1	-1.8	-1.4
Cantabria	101.4	-5.1	-1.0	86.1	-9.4	-5.5
Castilla y León	107.2	3.0	2.8	91.0	-1.8	-2.2
Castilla - La Mancha	99.7	0.2	-0.5	84.7	-4.9	-5.7
Cataluña	99.9	-0.9	-0.9	84.6	-5.2	-5.5
Comunitat Valenciana	90.9	-2.0	0.0	77.6	-6.3	-4.5
Extremadura	108.6	1.3	2.5	92.8	-3.2	-2.2
Galicia	99.8	-0.7	-1.1	85.5	-5.2	-5.7
Madrid, Comunidad de	100.6	-1.6	0.2	86.6	-5.9	-4.3
Murcia, Región de	93.9	-2.4	-2.1	79.1	-6.7	-6.6
Navarra, Comunidad Foral de	107.6	0.4	0.3	92.3	-3.6	-4.1
País Vasco	103.3	0.7	0.5	88.0	-3.5	-3.9
Rioja, La	96.4	0.2	-1.6	81.2	-4.7	-6.5
Ceuta	101.7	-4.5	-4.3	87.2	-7.2	-7.1
Melilla	110.0	0.9	2.4	93.7	-1.7	-0.7

## 8. General Indices without Service Stations, by Autonomous Cities and Communities

	Index	% variation		Deflated index	% variation	
		Annual	Year-to-date average		Annual	Year-to-date average
<b>National total</b>	<b>95.0</b>	<b>-2.5</b>	<b>-1.9</b>	<b>83.3</b>	<b>-5.8</b>	<b>-4.9</b>
Andalucía	90.0	-6.0	-3.7	79.1	-9.1	-6.7
Aragón	96.4	-4.1	-3.5	83.9	-7.5	-6.7
Asturias, Principado de	101.6	-1.1	-1.9	89.1	-4.9	-5.6
Balears, Illes	94.9	-2.2	-1.3	84.2	-5.0	-3.9
Canarias	84.5	-0.2	1.1	77.1	-2.1	-0.5
Cantabria	98.9	-6.0	-1.8	86.5	-9.1	-4.8
Castilla y León	104.8	1.7	1.0	91.1	-2.1	-2.7
Castilla - La Mancha	99.7	-0.2	-1.2	87.2	-4.3	-5.2
Cataluña	98.7	-1.7	-2.0	85.7	-5.0	-5.1
Comunitat Valenciana	89.2	-2.6	-1.0	78.4	-5.9	-4.1
Extremadura	103.7	-0.3	0.5	91.1	-3.6	-2.6
Galicia	97.6	-1.3	-2.1	86.1	-4.8	-5.2
Madrid, Comunidad de	93.8	-3.7	-2.7	83.0	-6.9	-5.7
Murcia, Región de	93.3	-3.0	-2.7	80.9	-6.0	-5.4
Navarra, Comunidad Foral de	103.1	-1.2	-2.0	90.7	-4.2	-5.0
País Vasco	101.2	0.2	-0.3	88.3	-3.0	-3.3
Rioja, La	96.3	-0.1	-2.7	83.0	-4.1	-6.3
Ceuta	104.0	-4.3	-4.5	91.8	-6.7	-6.6
Melilla	109.8	2.3	2.4	96.2	0.1	0.1

## 9. General Employment Indices of Autonomous Cities and Communities

	Index	% variation on		
		Previous mo	Same month previous year	Year-to-date average
<b>National total</b>	<b>97.1</b>	<b>0.0</b>	<b>-0.4</b>	<b>-0.4</b>
Andalucía	93.4	-0.5	-1.2	-1.2
Aragón	95.7	-0.4	-0.8	-1.0
Asturias, Principado de	102.4	0.7	-1.4	-1.8
Balears, Illes	96.7	2.9	0.8	0.4
Canarias	94.8	0.0	1.8	1.0
Cantabria	104.0	0.2	1.4	1.1
Castilla y León	105.3	0.1	1.6	0.9
Castilla - La Mancha	97.3	-0.1	-0.3	0.3
Cataluña	96.2	0.2	-0.3	-0.1
Comunitat Valenciana	95.0	-0.3	-0.8	-0.6
Extremadura	100.5	-0.8	-0.2	-0.2
Galicia	103.0	0.2	1.7	1.0
Madrid, Comunidad de	97.1	0.0	-1.4	-0.7
Murcia, Región de	98.1	0.0	-2.1	-2.6
Navarra, Comunidad Foral de	98.8	0.0	-0.6	-0.9
País Vasco	100.6	0.2	0.0	-0.3
Rioja, La	97.5	0.0	-0.3	-0.8
Ceuta	102.5	2.0	1.8	0.3
Melilla	105.1	0.9	4.2	2.7

## 10. General Employment Indices without Service Stations, by Autonomous Cities and Communities

	Index	% variation on		
		Previous mo	Same month previous year	Year-to-date average
<b>National total</b>	<b>97.0</b>	<b>0.0</b>	<b>-0.4</b>	<b>-0.4</b>
Andalucía	93.5	-0.6	-1.2	-1.2
Aragón	95.7	-0.4	-0.9	-1.1
Asturias, Principado de	102.7	0.6	-1.5	-1.9
Balears, Illes	96.7	2.9	0.7	0.5
Canarias	93.9	0.0	1.7	1.0
Cantabria	103.7	0.2	1.3	1.0
Castilla y León	105.8	0.1	1.4	0.6
Castilla - La Mancha	97.5	-0.2	-0.4	0.3
Cataluña	96.2	0.2	-0.2	0.0
Comunitat Valenciana	95.0	-0.3	-0.7	-0.6
Extremadura	100.7	-0.9	-0.3	-0.2
Galicia	103.3	0.2	1.8	1.1
Madrid, Comunidad de	96.7	-0.1	-1.4	-0.7
Murcia, Región de	98.4	0.0	-2.0	-2.6
Navarra, Comunidad Foral de	98.6	-0.1	-0.6	-1.0
País Vasco	100.4	0.2	0.0	-0.3
Rioja, La	97.7	0.0	0.0	-0.6
Ceuta	102.6	2.0	1.8	0.2
Melilla	105.4	0.9	4.6	2.8

For further information see INEbase - [www.ine.es/en/welcome\\_en.htm](http://www.ine.es/en/welcome_en.htm) All press releases at: [www.ine.es/en/prensa/prensa\\_en.htm](http://www.ine.es/en/prensa/prensa_en.htm)

**Press Office:** Telephone numbers: 91 583 93 63 / 94 08

Fax: 91 583 90 87 - [gprensa@ine.es](mailto:gprensa@ine.es)

**Information Area:** Telephone number: 91 583 91 00

Fax: 91 583 91 58 - [www.ine.es/infoine/?L=1](http://www.ine.es/infoine/?L=1)