

Retail Trade Indices (RTI). Base 2005

June 2010. *Provisional data*

Main Results

- The **General Retail Trade Index** at constant prices registers an **interannual variation of 0.9%** in June, two points and six tenths more than that registered in May.
- The **average rate** of retail sales stands at **–0.9%** during the first half of the year as compared with the same period of 2009.
- **All distribution classes increase their sales** in June as compared with the same month the previous year.
- **Employment** in the retail sector **decreases 1.0%** as compared with June 2009.
- Sales rise in the interannual rate in all **Autonomous Communities** except in six. Employment only increases in four of them.

Evolution of trade in general and by type of product

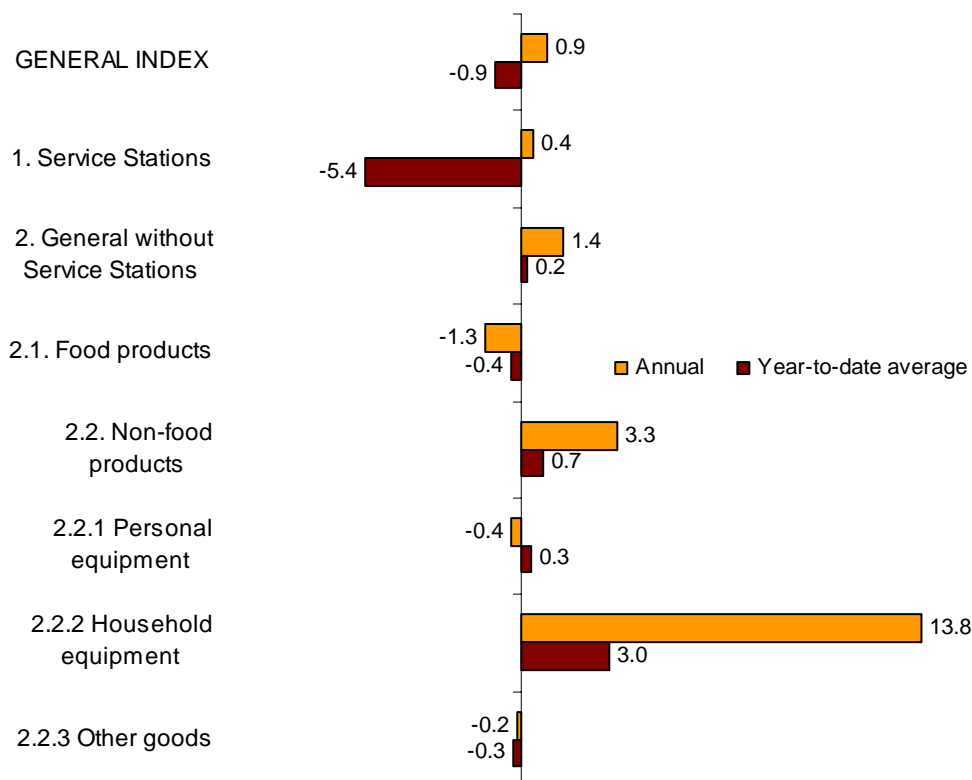
Sales in retail trade at constant prices (that is, after eliminating the prices' effect) registered an interannual rate of 0.9% in June 2010, indicating an increase of two points and six tenths as compared with May.

Sales, excluding service stations, presented an annual rate, in constant terms, of 1.4%. The breakdown of these sales by type of product showed a decrease of 1.3% in food products, whereas non-food products increase 3.3%. This rise was due to the increase in sales registered by Household Equipment products (13.8%).

In turn, sales in service stations, after adjusting the prices' effect, increased 0.4% as compared with June 2009.

The average for the General Retail Trade Index for the first quarter of the year registered a variation rate of –0.9% as compared with the same period the previous year. This rate was four tenths lower than that of the average for the first five months of the year.

Annual and average rates at constant prices General index and by type of product



Evolution of trade, by distribution class

All distribution classes increased their sales in June, as compared with the same month the previous year. *Small chain stores* (2.6%) accounted for the greatest increase.

In the first quarter of the year 2010, only *Large chain stores* registered a positive rate (2.3%) in the average for sales.

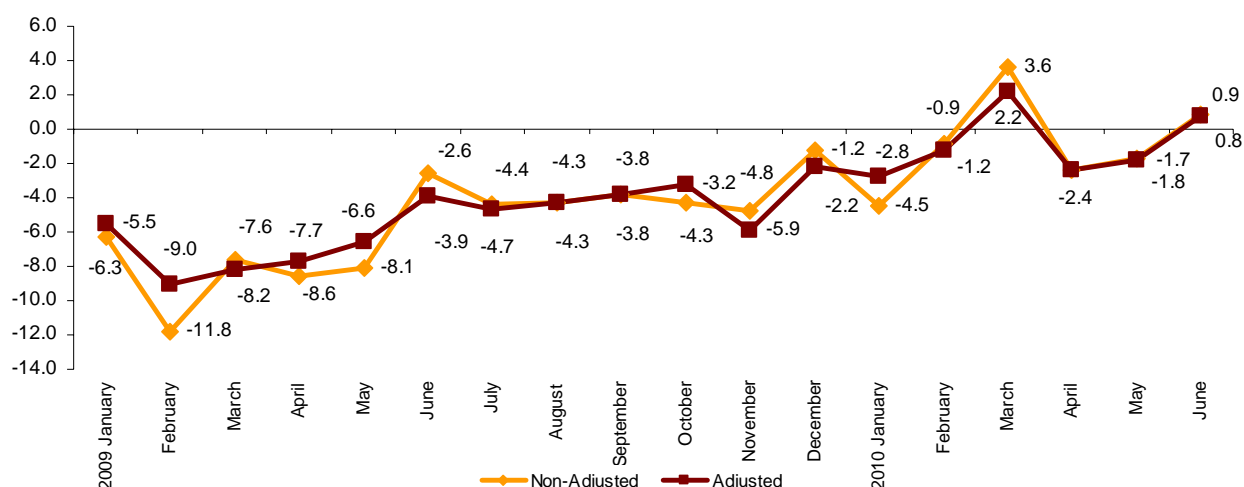
National indices by distribution class

	Deflated Index	% variation	
		Annual	Year-to-date average
GENERAL INDEX	93.0	0.9	-0.9
1. Service Station Index	98.2	0.4	-5.4
2. General Index without Service Stations	93.4	1.4	0.2
2.1. Single retail stores	87.1	1.6	-0.9
2.2. Small chain stores	91.8	2.6	-2.1
2.3. Large chain stores	113.0	0.8	2.3
2.4. Department stores	89.0	0.1	-0.1

Evolution of trade, adjusted for the calendar effect

After eliminating the calendar effect, that is, the difference between the number of working days in a given month in different years, the Retail Trade Index at constant prices registered a variation of **0.8%** in June. The interannual variation of the adjusted index stood two points and six tenths above that registered in May.

**Annual evolution of the deflated RTI
Adjusted and Non-adjusted General Index**



Evolution of employment, by distribution class

The employment index in the retail trade sector in June registered an annual rate of **-1.0%**, four tenths above that registered in May.

Employment increased 0.2% in *Service stations* as compared with June 2009. In turn, employment decreased in all distribution classes. *Small chain stores* were the trade formula accounting for the greatest decrease, with **-2.9%**.

In the retail sector as a whole, average employment registered a rate of **-1.9%** in the first half of the year as compared with the same period the previous year.

National employment indices

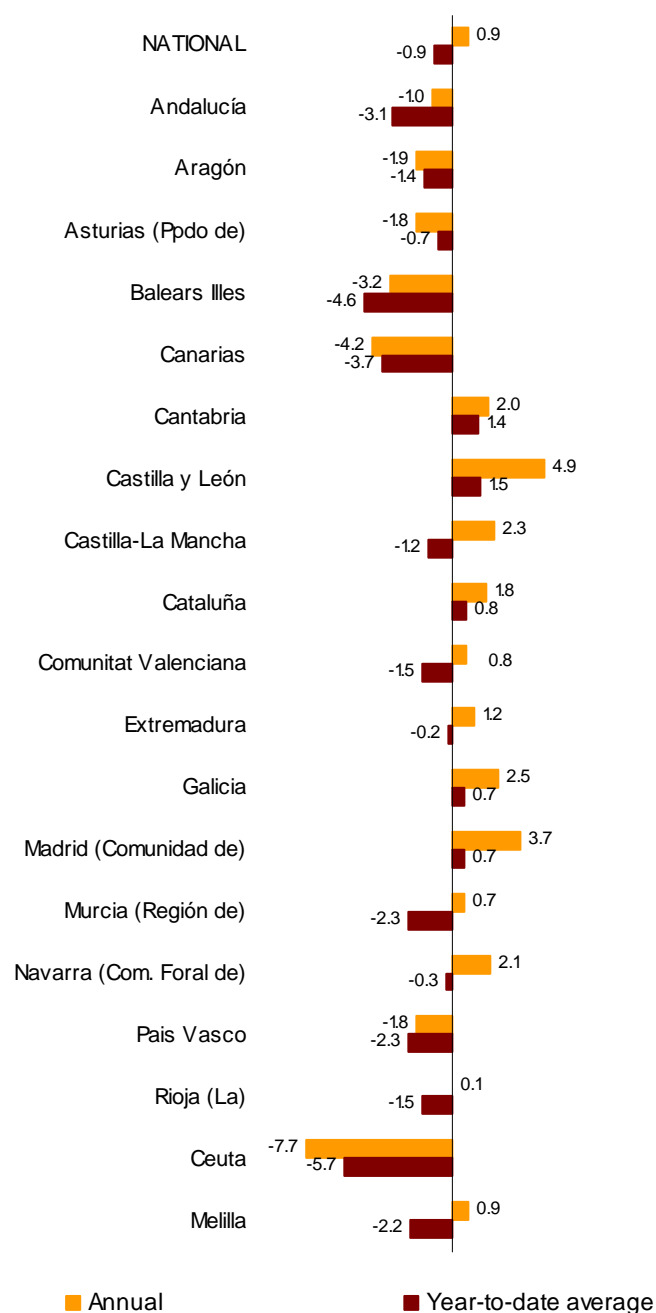
	Deflated Index	% variation	
		Annual	Year-to-date average
GENERAL INDEX	98.2	-1.0	-1.9
1. Service Station Index	101.4	0.2	-0.4
2. General Index without Service Stations	98.1	-1.0	-1.9
2.1. Single retail stores	96.9	-0.5	-1.4
2.2. Small chain stores	92.5	-2.9	-3.9
2.3. Large chain stores	112.1	-0.1	-1.6
2.4. Department stores	96.2	-0.9	-2.7

Results by Autonomous Community. Variation rates in sales

Sales rose in the interannual rate in all Autonomous Communities except in six. Castilla y León (4.9%) and Comunidad de Madrid (3.7%) were the ones registering the greatest growth.

In turn, Canarias (−4.2%) and Illes Balears (−3.2%) were the ones registering the greatest decreases this month.

**Annual and average rates at constant prices
General index by Autonomous Community**

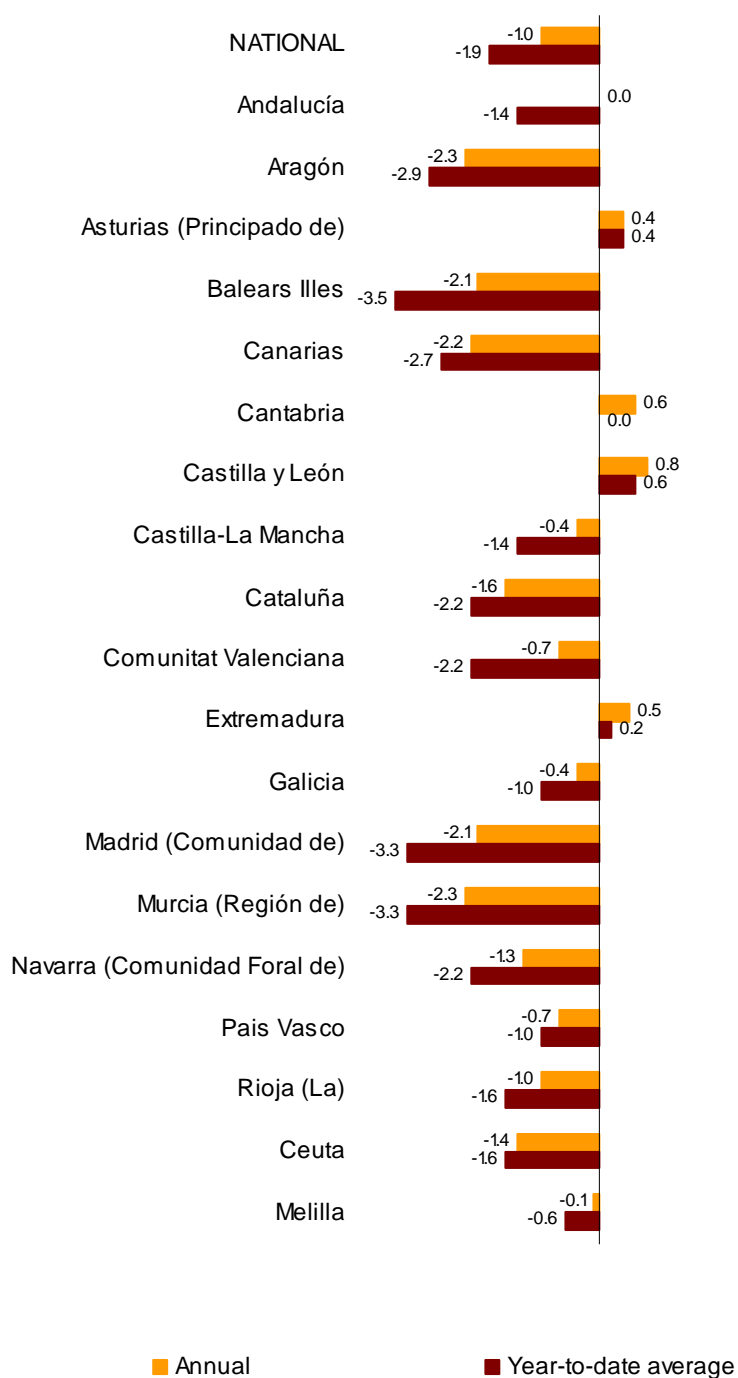


Results by Autonomous Community. Employment variation rates

Employment in retail trade increases in June in four Communities. Castilla y León (0.8%) was the one accounting for the greatest increase.

The remaining Communities experienced a decrease in employment, with Aragón and Región de Murcia (both with –2.3%) registering the greatest decrease.

Annual and average rates of the employment index General index by Autonomous Community



Retail Trade Index. Base 2005

June 2010

Provisional data

1. National indices

	Index	% variation		Deflated index	% variation	
		Annual	Year-to-date average		Annual	Year-to-date average
GENERAL INDEX	104.3	3.1	1.2	93.0	0.9	-0.9
1. Service Stations	119.6	14.7	14.1	98.2	0.4	-5.4
2. General Index without Service Stations	103.1	2.2	0.2	93.4	1.4	0.2
2.1. Food products	110.5	-0.3	-0.4	96.2	-1.3	-0.4
2.2. Non-food products	98.7	3.9	0.6	92.6	3.3	0.7
2.2.1 Personal equipment	97.2	-0.7	-0.6	91.4	-0.4	0.3
2.2.2 Household equipment	92.0	14.0	3.4	83.4	13.8	3.0
2.2.3 Other goods	105.3	0.4	-0.4	98.8	-0.2	-0.3

2. National Indices by distribution class

	Index	% variation		Deflated index	% variationr	
		Annual	Year-to-date average		Annual	Year-to-date average
GENERAL INDEX	104.3	3.1	1.2	93.0	0.9	-0.9
1. Service Station Index	119.6	14.7	14.1	98.2	0.4	-5.4
2. General Index without Service Stations	103.1	2.2	0.2	93.4	1.4	0.2
2.1. Single retail stores	96.2	2.4	-1.0	87.1	1.6	-0.9
2.2. Small chain stores	101.4	3.4	-2.1	91.8	2.6	-2.1
2.3. Large chain stores	124.8	1.6	2.2	113.0	0.8	2.3
2.4. Department stores	98.3	0.9	-0.2	89.0	0.1	-0.1

3. Department Store Indices

	Index	% variation		Deflated index	% variation	
		Annual	Year-to-date average		Annual	Year-to-date average
DEPARTMENT STORE INDEX	98.3	0.9	-0.2	89.0	0.1	-0.1
1. Food products	93.6	-6.0	-5.9	81.4	-6.9	-5.8
2. Non-food products	100.6	4.4	2.8	94.4	3.8	2.9

4. National Indices. Adjusted for calendar effect

	Index	% variation		Deflated index	% variation	
		Annual	Year-to-date average		Annual	Year-to-date average
GENERAL INDEX	104.0	3.0	1.2	92.7	0.8	-0.9
1. Service Stations	119.4	14.6	14.0	97.9	0.3	-5.4
2. General Index without Service Stations	102.8	2.1	0.2	93.1	1.3	0.2
2.1. Department Store Index	98.0	0.8	-0.1	88.8	0.1	0.0

5. Annual rates of National indices

	General Retail Trade Index				General Index without Service Stations			
	Current Prices		Constant Prices		Current Prices		Constant Prices	
	Original	Adjusted ¹	Original	Adjusted ¹	Original	Adjusted ¹	Original	Adjusted ¹
2009 June	-5.5	-6.8	-2.6	-3.9	-3.8	-5.1	-3.0	-4.3
July	-7.7	-8.0	-4.4	-4.7	-6.1	-6.4	-4.9	-5.2
August	-6.5	-6.5	-4.3	-4.3	-5.5	-5.5	-4.5	-4.5
September	-6.1	-6.1	-3.8	-3.8	-5.0	-5.0	-3.8	-3.8
October	-6.0	-4.8	-4.3	-3.2	-5.1	-4.0	-3.9	-2.8
November	-4.7	-5.9	-4.8	-5.9	-4.3	-5.4	-3.5	-4.7
October	-0.3	-1.2	-1.2	-2.2	-0.8	-1.7	-0.1	-1.1
2010 January	-3.0	-1.3	-4.5	-2.8	-3.8	-2.1	-3.2	-1.4
February	0.3	0.0	-0.9	-1.2	-0.5	-0.8	0.2	-0.1
March	5.8	4.3	3.6	2.2	4.9	3.4	5.3	3.8
April *	0.1	0.1	-2.4	-2.4	-1.1	-1.1	-1.2	-1.2
May *	1.1	1.0	-1.7	-1.8	-0.2	-0.3	-0.8	-0.9
June	3.1	3.0	0.9	0.8	2.2	2.1	1.4	1.3

¹ Index rates adjusted for calendar effects

* Revised figure

6. National Employment Indices by distribution class

	Index	% variation on		
		Previous month	Same month	Year-to-date average
GENERAL INDEX	98.2	0.8	-1.0	-1.9
1. Service Stations	101.4	1.4	0.2	-0.4
2. General Index without Service Stations	98.1	0.8	-1.0	-1.9
2.1. Single retail stores	96.9	0.2	-0.5	-1.4
2.2. Small chain stores	92.5	1.2	-2.9	-3.9
2.3. Large chain stores	112.1	1.5	-0.1	-1.6
2.4. Department stores	96.2	1.7	-0.9	-2.7

7. General Retail Trade Indices of Autonomous Communities

	Index	% variation		Deflated index	% variation	
		Annual	Year-to-date average		Annual	Year-to-date average
NATIONAL INDEX	104.3	3.1	1.2	93.0	0.9	-0.9
Andalucía	99.8	1.1	-1.2	89.0	-1.0	-3.1
Aragón	104.6	0.4	0.6	93.1	-1.9	-1.4
Asturias (Principado de)	107.3	0.5	1.3	96.2	-1.8	-0.7
Balears (Illes)	107.1	-1.3	-2.5	96.1	-3.2	-4.6
Canarias	90.8	-2.9	-2.7	82.6	-4.2	-3.7
Cantabria	110.0	4.3	3.7	97.7	2.0	1.4
Castilla y León	112.2	7.3	3.8	99.8	4.9	1.5
Castilla-La Mancha	106.9	4.8	1.0	95.5	2.3	-1.2
Cataluña	108.2	4.3	3.2	95.7	1.8	0.8
Comunitat Valenciana	99.2	2.8	0.3	88.5	0.8	-1.5
Extremadura	111.7	3.3	1.7	99.7	1.2	-0.2
Galicia	108.3	4.6	2.8	97.0	2.5	0.7
Madrid (Comunidad de)	105.9	6.2	3.0	95.2	3.7	0.7
Murcia (Región de)	101.6	3.1	0.0	89.4	0.7	-2.3
Navarra (Comunidad Foral de)	112.8	4.5	2.0	100.8	2.1	-0.3
País Vasco	105.6	0.1	-0.5	93.9	-1.8	-2.3
Rioja (La)	98.7	2.2	0.3	87.1	0.1	-1.5
Ceuta	104.4	-5.4	-3.8	92.1	-7.7	-5.7
Melilla	112.1	4.1	0.7	98.2	0.9	-2.2

8. General Indices without Service Stations, by Autonomous Community

	Index	% variation		Deflated index	% variation	
		Annual	Year-to-date average		Annual	Year-to-date average
NATIONAL INDEX	103.1	2.2	0.2	93.4	1.4	0.2
Andalucía	99.8	0.9	-1.4	90.5	0.3	-1.1
Aragón	105.2	0.6	0.4	94.9	-0.5	0.3
Asturias (Principado de)	106.9	-0.4	0.4	97.3	-1.4	0.6
Balears (Illes)	107.2	-1.4	-2.6	97.8	-1.7	-2.4
Canarias	89.7	-3.1	-3.5	83.4	-2.4	-2.0
Cantabria	108.6	3.8	3.2	98.0	3.2	3.3
Castilla y León	108.6	4.2	2.8	97.9	3.2	2.5
Castilla-La Mancha	107.7	4.5	0.4	97.8	3.3	0.3
Cataluña	108.2	3.8	2.3	97.0	2.7	2.0
Comunitat Valenciana	98.2	1.9	-0.4	89.0	1.4	-0.1
Extremadura	108.9	2.4	0.8	98.5	1.5	0.8
Galicia	106.9	3.8	2.1	97.2	3.2	2.3
Madrid (Comunidad de)	101.4	3.3	-0.1	92.5	2.4	-0.2
Murcia (Región de)	102.0	3.7	0.0	91.1	2.8	0.1
Navarra (Comunidad Foral de)	111.5	4.2	0.5	101.0	3.1	0.1
País Vasco	104.4	-0.3	-1.0	94.0	-1.0	-1.0
Rioja (La)	98.8	2.1	-0.3	88.3	1.2	-0.2
Ceuta	106.7	-4.4	-2.9	96.5	-4.7	-2.5
Melilla	110.5	3.4	0.5	99.0	2.0	-0.3

9. General Employment Indices of Autonomous Communities

	Index	% variation on		
		Previous month	Same month previous year	Year-to-date average
NATIONAL INDEX	98.2	0.8	-1.0	-1.9
Andalucía	95.4	0.8	0.0	-1.4
Aragón	96.9	0.4	-2.3	-2.9
Asturias (Principado de)	104.2	0.3	0.4	0.4
Balears (Illes)	97.5	1.6	-2.1	-3.5
Canarias	93.3	0.2	-2.2	-2.7
Cantabria	104.0	1.4	0.6	0.0
Castilla y León	104.5	0.8	0.8	0.6
Castilla-La Mancha	98.5	0.9	-0.4	-1.4
Cataluña	97.7	1.2	-1.6	-2.2
Comunitat Valenciana	97.0	1.3	-0.7	-2.2
Extremadura	101.1	0.4	0.5	0.2
Galicia	102.6	1.3	-0.4	-1.0
Madrid (Comunidad de)	98.7	0.2	-2.1	-3.3
Murcia (Región de)	100.9	0.6	-2.3	-3.3
Navarra (Comunidad Foral de)	100.1	0.7	-1.3	-2.2
País Vasco	101.0	0.4	-0.7	-1.0
Rioja (La)	98.7	0.9	-1.0	-1.6
Ceuta	101.3	0.6	-1.4	-1.6
Melilla	101.3	0.5	-0.1	-0.6

10. General Employment Indices without Service Stations, by Autonomous Community

	Index	% variation on		
		Previous month	Same month previous year	Year-to-date average
NATIONAL INDEX	98.1	0.8	-1.0	-1.9
Andalucía	95.4	0.8	0.0	-1.4
Aragón	96.9	0.4	-2.3	-2.9
Asturias (Principado de)	104.6	0.3	0.5	0.4
Balears (Illes)	97.5	1.6	-2.0	-3.5
Canarias	92.5	0.1	-2.4	-3.0
Cantabria	103.9	1.5	0.4	-0.1
Castilla y León	105.0	0.6	0.9	0.8
Castilla-La Mancha	98.7	0.9	-0.5	-1.6
Cataluña	97.6	1.2	-1.7	-2.2
Comunitat Valenciana	96.9	1.2	-0.8	-2.2
Extremadura	101.4	0.4	0.7	0.4
Galicia	102.7	1.3	-0.5	-1.0
Madrid (Comunidad de)	98.2	0.2	-2.1	-3.4
Murcia (Región de)	101.0	0.6	-2.2	-3.3
Navarra (Comunidad Foral de)	99.9	0.6	-1.3	-2.4
País Vasco	100.8	0.4	-0.8	-1.0
Rioja (La)	98.6	0.9	-0.9	-1.5
Ceuta	101.4	0.6	-1.5	-1.6
Melilla	101.4	0.5	-0.1	-0.6

For further information see INEbase - www.ine.es/en/welcome_en.htm All press releases at: www.ine.es/en/prensa/prensa_en.htm

Press Office: Telephone numbers: 91 583 93 63 / 94 08

Fax: 91 583 90 87 - gprensa@ine.es

Information Area: Telephone number: 91 583 91 00

Fax: 91 583 91 58 - www.ine.es/infoine