

28 July 2011

Retail Trade Indices (RTI). Base 2005
June 2011. *Provisional data*

Main results

- The **General Retail Trade Index** at constant prices registers an **interannual variation of -7.4% in June**, one-and-a-half points lower than that registered in May.
- The **average rate** of retail sector sales stands at -5.5% during the first half of the year, as compared with the same period of 2010.
- **All of the distribution classes** present decreases in sales except **Large chain stores**, which increase 0.3%, as compared with June 2010.
- **Employment** in the retail sector **decreases 0.7%** interannually.
- **All Autonomous Communities** present negative variations in their retail sales in June, as compared with the same month last year. Employment decreases in nine of them.

Evolution of trade, in general and by type of product

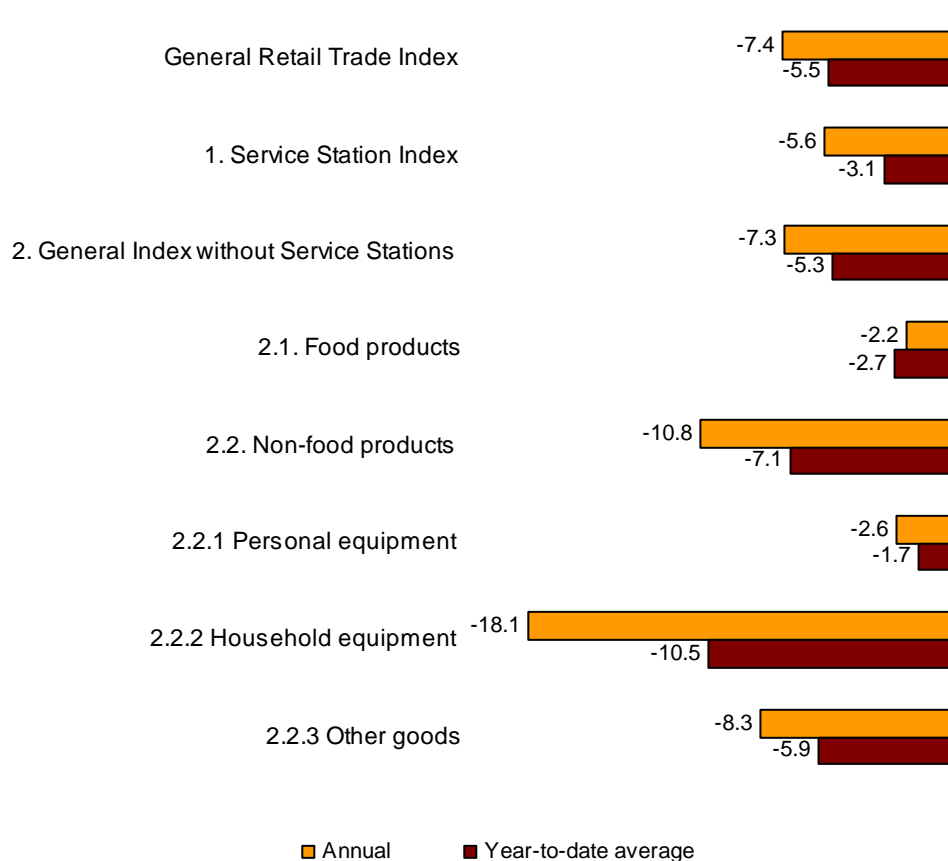
Sales in retail trade at constant prices (that is, after eliminating the prices' effect) registered an interannual variation of -7.4% in June 2011, indicating a 1.5-point decrease, as compared with the rate from May.

Sales, excluding service stations, presented an annual rate of -7.3%, in constant terms. The breakdown of these sales by type of product showed a decrease in both food products (-2.2%) and non-food products (-10.8%). Among the latter, Household equipment (-18.1%) registered the greatest decrease.

In turn, sales in service stations, after adjusting the prices' effect, decreased 5.6%, as compared with June 2010.

The average rate of the General Retail Trade Index during the first six months of the year presented a -5.5% variation, as compared with the same period last year. This rate stood four tenths below that registered in May.

**Annual and average rates at constant prices
General index and by type of product**



Evolution of trade, by distribution class

All of the distribution classes, except *Large chain stores*, presented a decrease in sales in June, as compared with the same month of 2010. *Small chain stores* (-12.1%) presented the greatest decrease.

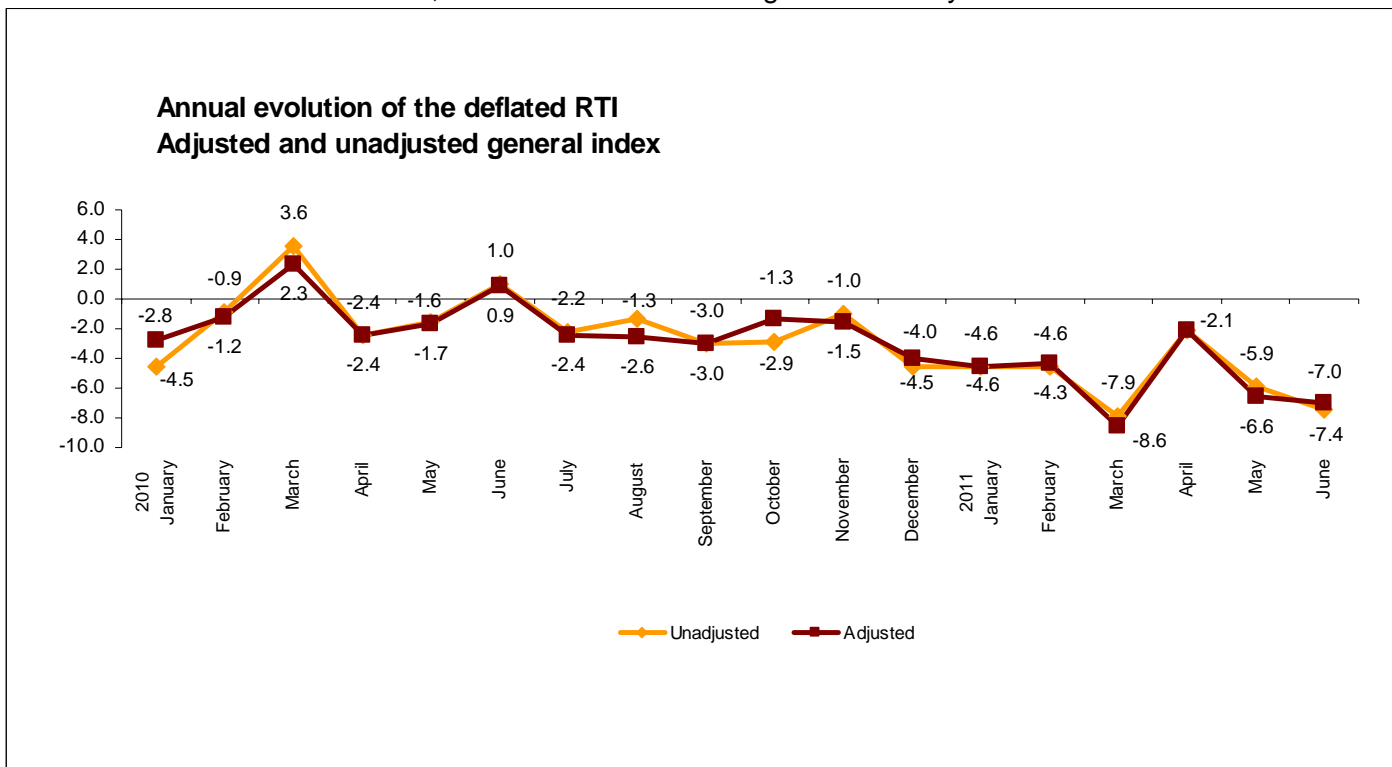
During the first six months of the year, the average sales had a negative variation in all distribution classes, as compared with the same period last year, except in *Large chain stores*, which registered an increase of 0.4%.

National Indices by distribution class

	Deflated Index	% variation	
		Annual	Year-to-date average
General Retail Trade Index	86.2	-7.4	-5.5
1. Service Station Index	92.6	-5.6	-3.1
2. General Index without Service Stations	86.6	-7.3	-5.3
2.1. Single retail stores	79.6	-8.7	-7.1
2.2. Small chain stores	80.6	-12.1	-6.9
2.3. Large chain stores	113.3	0.3	0.4
2.4. Department stores	80.4	-9.7	-7.3

Evolution of trade, adjusted for the calendar effect

After adjusting for the calendar effect, that is, the difference between the number of working days in a given month in different years, the Retail Trade Index presented an adjusted interannual rate of **-7.0%**, four tenths below that registered in May.



Evolution of employment, by distribution class

The employment index in the retail trade sector in June showed an annual rate of **-0.7%**, four tenths below that registered in May. Employment decreased 0.6% in *Service stations*.

By distribution class, *Large chain stores* were the only distribution class with a positive interannual rate, standing at 1.2%.

In the retail sector as a whole, average employment registered a rate of **-0.4%** in the first six months of the year, as compared with the same period the previous year.

National Employment Indices

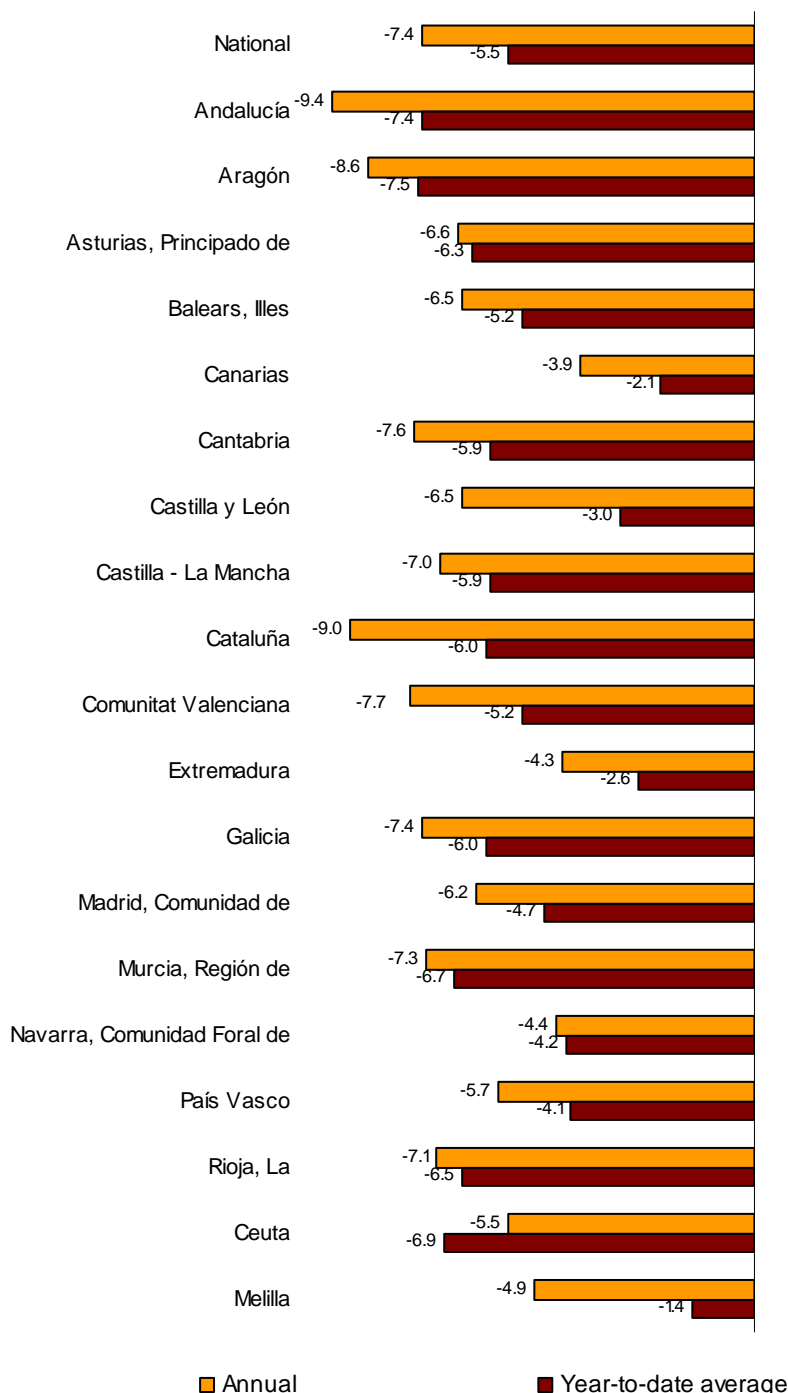
	Index	% variation	
		Annual	Year-to-date average
General Retail Trade Index	97.7	-0.7	-0.4
1. Service Station Index	100.8	-0.6	-0.5
2. General Index without Service Stations	97.6	-0.7	-0.4
2.1. Single retail stores	96.8	-0.2	-0.1
2.2. Small chain stores	90.1	-3.4	-1.9
2.3. Large chain stores	113.5	1.2	1.2
2.4. Department stores	94.3	-2.0	-1.9

Results by Autonomous Community. Variation rates in sales

Retail sales decreased in the interannual rate in all Autonomous Communities, except in Andalucía (-9.4%) and Cataluña (-9.0%).

Canarias (-3.9%) was the Community that registered the smallest decrease.

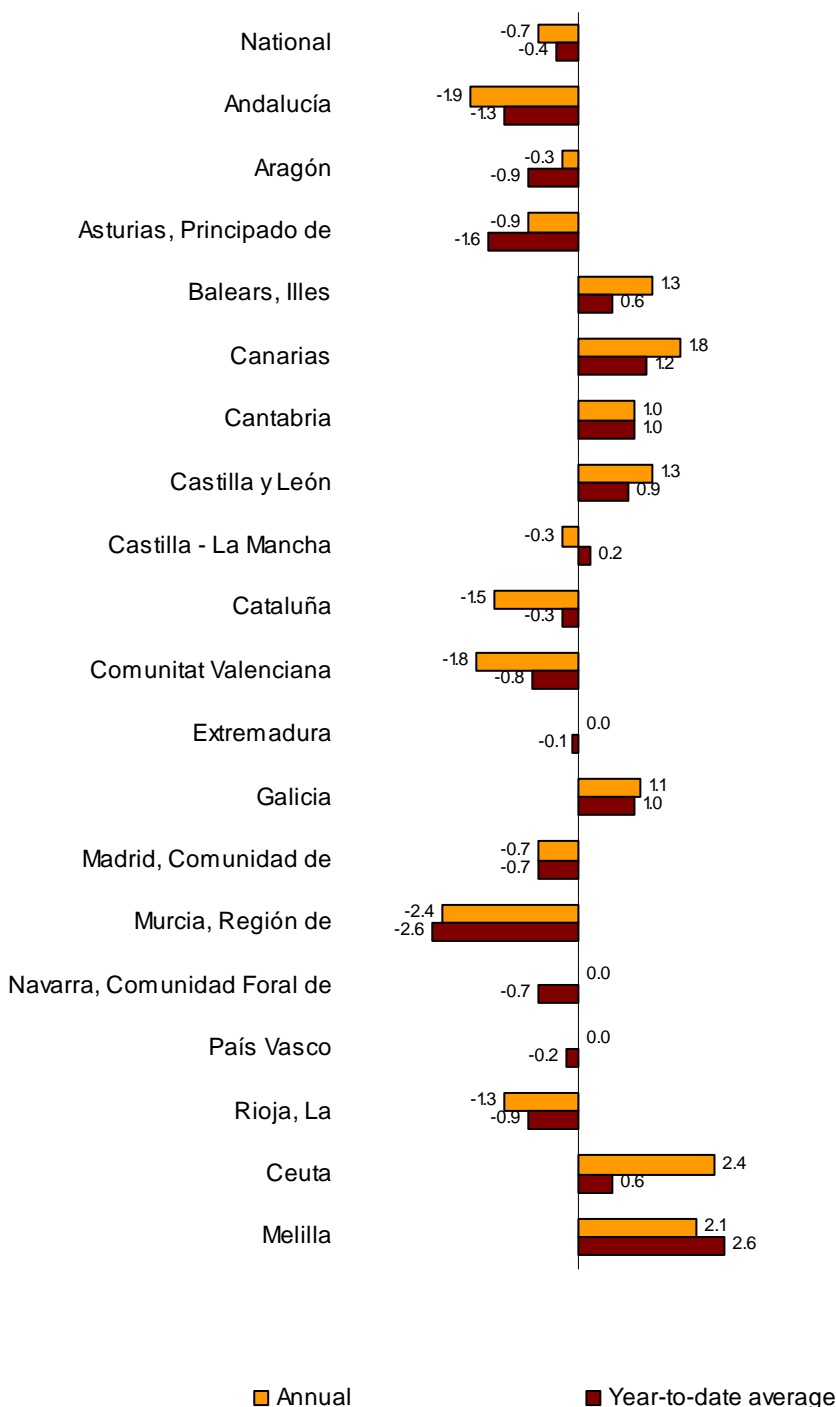
**Annual and average rates at constant prices
General index by Autonomous City and Community**



Results by Autonomous Community. Employment variation rates

Employment in retail trade decreased in nine Autonomous Communities. Región de Murcia (-2.4%), Andalucía (-1.9%), Comunitat Valenciana (-1.8%) and Cataluña (-1.5%) presented the greatest decreases.

**Annual and average rates of the employment index
General index by Autonomous City and Community**



Retail Trade Index. Base 2005

June 2011

Provisional data

1. National indices

	Index	% variation		Deflated index	% variation	
		Annual	Year-to-date average		Annual	Year-to-date average
General Retail Trade Index	100.6	-3.6	-1.1	86.2	-7.4	-5.5
1. Service Station Index	129.2	8.2	13.7	92.6	-5.6	-3.1
2. General Index without Service Stations	98.4	-4.7	-2.4	86.6	-7.3	-5.3
2.1. Food products	111.2	0.4	0.5	94.2	-2.2	-2.7
2.2. Non-food products	90.6	-8.2	-4.4	82.7	-10.8	-7.1
2.2.1 Personal equipment	95.0	-2.3	-1.2	89.1	-2.6	-1.7
2.2.2 Household equipment	76.7	-16.8	-9.4	68.6	-18.1	-10.5
2.2.3 Other goods	99.1	-5.6	-3.1	90.4	-8.3	-5.9

2. National Indices by distribution class

	Index	% variation		Deflated index	% variation	
		Annual	Year-to-date average		Annual	Year-to-date average
General Retail Trade Index	100.6	-3.6	-1.1	86.2	-7.4	-5.5
1. Service Station Index	129.2	8.2	13.7	92.6	-5.6	-3.1
2. General Index without Service Stations	98.4	-4.7	-2.4	86.6	-7.3	-5.3
2.1. Single retail stores	90.4	-6.2	-4.2	79.6	-8.7	-7.1
2.2. Small chain stores	91.5	-9.7	-4.0	80.6	-12.1	-6.9
2.3. Large chain stores	128.7	3.2	3.6	113.3	0.3	0.4
2.4. Department stores	91.3	-7.1	-4.4	80.4	-9.7	-7.3

3. Department Store Indices

	Index	% variation		Deflated index	% variation	
		Annual	Year-to-date average		Annual	Year-to-date average
Department Store Index	91.3	-7.1	-4.4	80.4	-9.7	-7.3
1. Food products	94.1	0.6	-1.1	79.8	-2.0	-4.3
2. Non-food products	89.9	-10.7	-5.9	82.0	-13.2	-8.6

4. National Indices. Adjusted for calendar effect

	Index	% variation		Deflated index	% variation	
		Annual	Year-to-date average		Annual	Year-to-date average
General Retail Trade Index	100.7	-3.3	-1.2	86.3	-7.0	-5.6
1. Service Station Index	129.3	8.4	13.6	92.6	-5.4	-3.2
2. General Index without Service Stations	98.5	-4.3	-2.5	86.7	-6.9	-5.5
2.1. Department Store Index	91.3	-6.9	-4.5	80.4	-9.4	-7.4

5. Annual rates of National indices

	General Retail Trade Index				General Index without Service Stations			
	Current Prices		Constant Prices		Current Prices		Constant Prices	
	Original	Adjusted ¹	Original	Adjusted ¹	Original	Adjusted ¹	Original	Adjusted ¹
2010 June	3.2	3.1	1.0	0.9	2.3	2.2	1.5	1.4
July	0.2	0.0	-2.2	-2.4	-0.9	-1.1	-2.0	-2.2
August	0.7	-0.6	-1.3	-2.6	0.0	-1.4	-1.2	-2.6
September	-0.5	-0.5	-3.0	-3.0	-1.6	-1.6	-2.9	-2.9
October	0.0	1.6	-2.9	-1.3	-0.9	0.8	-2.6	-0.8
November	1.9	1.4	-1.0	-1.5	1.1	0.6	-0.7	-1.2
October	-0.6	-0.1	-4.5	-4.0	-1.7	-1.2	-3.9	-3.4
2011 January	-0.3	-0.3	-4.6	-4.6	-1.7	-1.7	-4.5	-4.5
February	0.1	0.4	-4.6	-4.3	-1.6	-1.4	-4.6	-4.3
March	-3.3	-4.0	-7.9	-8.6	-5.1	-5.8	-8.1	-8.8
April	2.7	2.7	-2.1	-2.1	1.8	1.8	-1.5	-1.5
May	-1.5	-2.3	-5.9	-6.6	-2.5	-3.3	-5.8	-6.5
June	-3.6	-3.3	-7.4	-7.0	-4.7	-4.3	-7.3	-6.9

¹ Index rates adjusted for calendar effects

6. National Employment Indices by distribution class

	Index	% variation on		
		Previous mo	Same month	Year-to-date average
General Retail Trade Index	97.7	0.6	-0.7	-0.4
1. Service Station Index	100.8	1.6	-0.6	-0.5
2. General Index without Service Stations	97.6	0.6	-0.7	-0.4
2.1. Single retail stores	96.8	0.1	-0.2	-0.1
2.2. Small chain stores	90.1	0.3	-3.4	-1.9
2.3. Large chain stores	113.5	1.8	1.2	1.2
2.4. Department stores	94.3	1.4	-2.0	-1.9

7. General Retail Trade Indices of Autonomous Cities and Communities

	Index	% variation		Deflated index	% variation	
		Annual	Year-to-date average		Annual	Year-to-date average
National total	100.6	-3.6	-1.1	86.2	-7.4	-5.5
Andalucía	93.6	-5.6	-2.9	80.1	-9.4	-7.4
Aragón	99.7	-4.8	-3.2	85.2	-8.6	-7.5
Asturias, Principado de	104.5	-2.6	-1.5	89.8	-6.6	-6.3
Balears, Illes	104.1	-2.9	-1.1	89.8	-6.5	-5.2
Canarias	89.9	-0.6	1.6	79.0	-3.9	-2.1
Cantabria	105.8	-3.8	-1.5	90.2	-7.6	-5.9
Castilla y León	109.4	-2.5	1.8	93.3	-6.5	-3.0
Castilla - La Mancha	103.5	-2.7	-0.8	88.3	-7.0	-5.9
Cataluña	102.9	-5.2	-1.6	87.5	-9.0	-6.0
Comunitat Valenciana	95.8	-4.0	-0.8	82.2	-7.7	-5.2
Extremadura	111.0	-0.5	1.9	95.3	-4.3	-2.6
Galicia	104.2	-3.5	-1.5	89.5	-7.4	-6.0
Madrid, Comunidad de	104.0	-2.4	-0.3	89.8	-6.2	-4.7
Murcia, Región de	97.7	-3.8	-2.4	82.8	-7.3	-6.7
Navarra, Comunidad Foral de	112.0	-0.9	0.0	96.6	-4.4	-4.2
País Vasco	103.3	-2.1	0.1	88.4	-5.7	-4.1
Rioja, La	95.9	-2.8	-1.8	80.9	-7.1	-6.5
Ceuta	101.2	-3.0	-4.1	87.1	-5.5	-6.9
Melilla	109.1	-2.6	1.6	93.4	-4.9	-1.4

8. General Indices without Service Stations, by Autonomous Cities and Communities

	Index	% variation		Deflated index	% variation	
		Annual	Year-to-date average		Annual	Year-to-date average
National total	98.4	-4.7	-2.4	86.6	-7.3	-5.3
Andalucía	92.5	-6.9	-4.3	81.7	-9.3	-7.2
Aragón	99.7	-5.4	-3.9	87.2	-8.2	-7.0
Asturias, Principado de	103.8	-2.9	-2.0	91.5	-5.9	-5.6
Balears, Illes	103.3	-3.6	-1.6	91.9	-6.0	-4.2
Canarias	87.7	-1.2	0.8	80.2	-2.9	-0.8
Cantabria	103.4	-4.8	-2.4	90.7	-7.4	-5.3
Castilla y León	106.3	-2.1	0.4	92.8	-5.2	-3.1
Castilla - La Mancha	103.8	-3.1	-1.5	91.1	-6.3	-5.4
Cataluña	102.4	-5.7	-2.6	89.2	-8.4	-5.6
Comunitat Valenciana	94.3	-4.6	-1.7	83.2	-7.2	-4.7
Extremadura	106.4	-2.2	0.0	93.7	-4.7	-3.0
Galicia	101.8	-4.4	-2.4	90.0	-7.2	-5.5
Madrid, Comunidad de	96.9	-5.1	-3.1	86.1	-7.5	-6.0
Murcia, Región de	97.2	-4.7	-3.0	84.8	-6.8	-5.7
Navarra, Comunidad Foral de	107.6	-3.6	-2.3	95.1	-5.9	-5.2
País Vasco	101.3	-2.8	-0.7	88.7	-5.4	-3.7
Rioja, La	95.5	-3.3	-2.8	82.5	-6.7	-6.4
Ceuta	103.4	-3.0	-4.3	91.5	-5.2	-6.4
Melilla	108.3	-1.9	1.7	95.0	-4.0	-0.5

9. General Employment Indices of Autonomous Cities and Communities

	Index	% variation on		
		Previous mo	Same month previous year	Year-to-date average
National total	97.7	0.6	-0.7	-0.4
Andalucía	93.6	0.1	-1.9	-1.3
Aragón	96.7	0.9	-0.3	-0.9
Asturias, Principado de	103.3	0.9	-0.9	-1.6
Balears, Illes	98.9	2.0	1.3	0.6
Canarias	95.2	0.5	1.8	1.2
Cantabria	105.0	1.0	1.0	1.0
Castilla y León	105.8	0.5	1.3	0.9
Castilla - La Mancha	97.9	0.8	-0.3	0.2
Cataluña	97.4	1.1	-1.5	-0.3
Comunitat Valenciana	95.5	0.6	-1.8	-0.8
Extremadura	101.1	0.7	0.0	-0.1
Galicia	103.5	0.5	1.1	1.0
Madrid, Comunidad de	97.8	0.4	-0.7	-0.7
Murcia, Región de	98.3	0.3	-2.4	-2.6
Navarra, Comunidad Foral de	100.1	1.0	0.0	-0.7
País Vasco	101.0	0.4	0.0	-0.2
Rioja, La	97.5	0.0	-1.3	-0.9
Ceuta	103.8	1.2	2.4	0.6
Melilla	104.6	-0.6	2.1	2.6

10. General Employment Indices without Service Stations, by Autonomous Cities and Communities

	Index	% variation on		
		Previous mo	Same month previous year	Year-to-date average
National total	97.6	0.6	-0.7	-0.4
Andalucía	93.6	0.1	-1.9	-1.3
Aragón	96.6	0.8	-0.4	-1.0
Asturias, Principado de	103.6	0.8	-1.1	-1.7
Balears, Illes	98.9	2.0	1.2	0.6
Canarias	94.3	0.4	1.7	1.1
Cantabria	104.7	1.0	0.7	0.9
Castilla y León	106.3	0.4	1.3	0.7
Castilla - La Mancha	98.1	0.8	-0.3	0.2
Cataluña	97.3	1.1	-1.5	-0.3
Comunitat Valenciana	95.4	0.6	-1.8	-0.8
Extremadura	101.3	0.7	0.0	-0.2
Galicia	103.8	0.5	1.3	1.1
Madrid, Comunidad de	97.4	0.5	-0.6	-0.7
Murcia, Región de	98.5	0.3	-2.3	-2.6
Navarra, Comunidad Foral de	99.8	0.9	-0.1	-0.8
País Vasco	100.7	0.3	-0.1	-0.3
Rioja, La	97.6	-0.1	-1.0	-0.7
Ceuta	103.8	1.1	2.3	0.6
Melilla	104.9	-0.6	2.4	2.7

For further information see INEbase - www.ine.es/en/welcome_en.htm All press releases at: www.ine.es/en/prensa/prensa_en.htm

Press Office: Telephone numbers: 91 583 93 63 / 94 08

Fax: 91 583 90 87 - gprensa@ine.es

Information Area: Telephone number: 91 583 91 00

Fax: 91 583 91 58 - www.ine.es/infoine/?L=1