

29 July 2019

Retail Trade Indices (RTI). Base 2015
June 2019. Provisional data

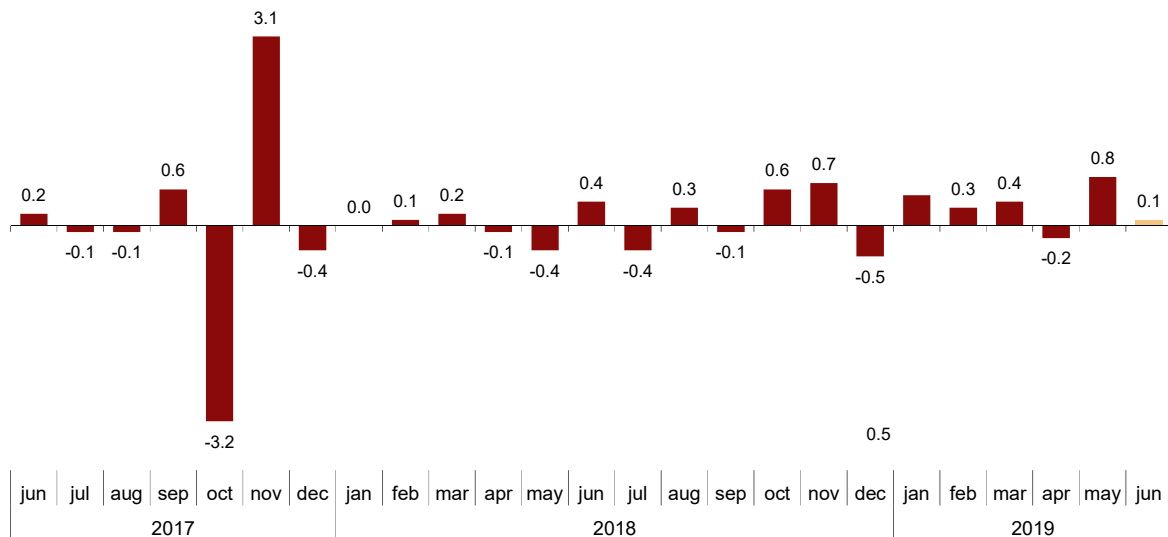
The monthly variation of the Retail Trade Index at constant prices is 0.1% after seasonal and calendar adjustment

The annual rate of the General Retail Trade Index at constant prices stands at 2.4% in the seasonal and calendar adjusted series and at 0.3% in the original series

Monthly trend of sales in retail trade

The monthly variation of the seasonally and calendar adjusted general Retail Trade Index (RTI) at constant prices between the months of June and May, stood at 0.1%. This rate was seven tenths lower than the previous month.

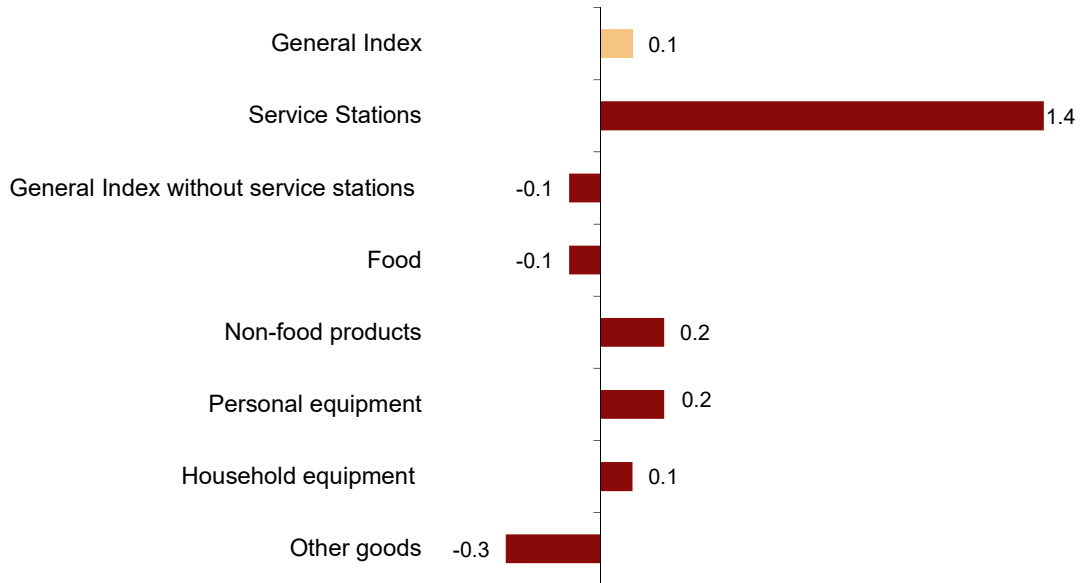
General Retail Trade Index at constant prices
Seasonally and calendar adjusted. Monthly rate. Percentage



The general index, excluding service stations, recorded a monthly rate of -0.1% .

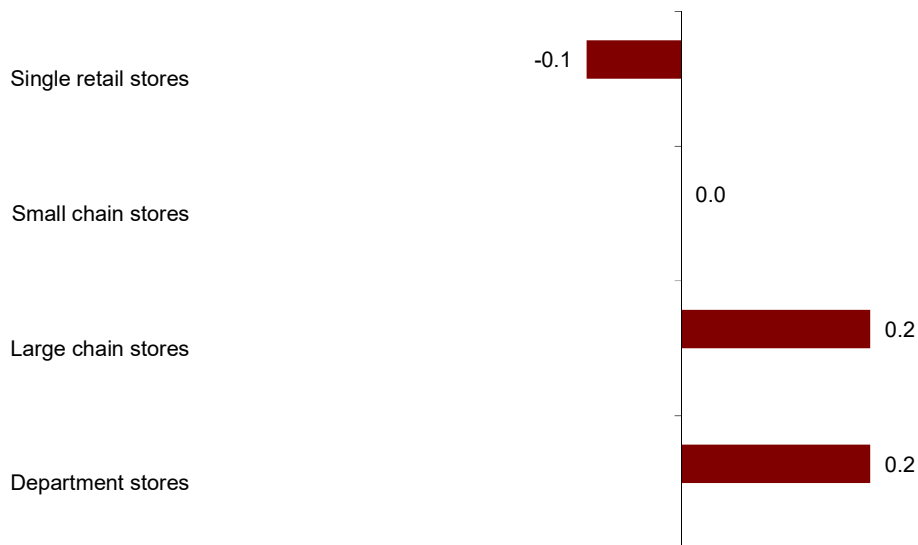
By products, *Food* decreased by 0.1% and *Non-food products* increased by 0.2% . If the latter is broken down by type of product, *Personal equipment* increased the most (0.2%).

Sales indices at constant prices: General and by type of products
 Seasonally and calendar adjusted. June 2019. Monthly rate. Percentage



By distribution type, *Large chain stores* and *Department stores* increased both by 0.2% in monthly rate, *Small chain stores* remained unchanged (0.0%). *Single retail stores* decreased by -0.1% .

Sales indices at constant prices by distribution type
 Seasonally and calendar adjusted. June 2019. Monthly rate. Percentage



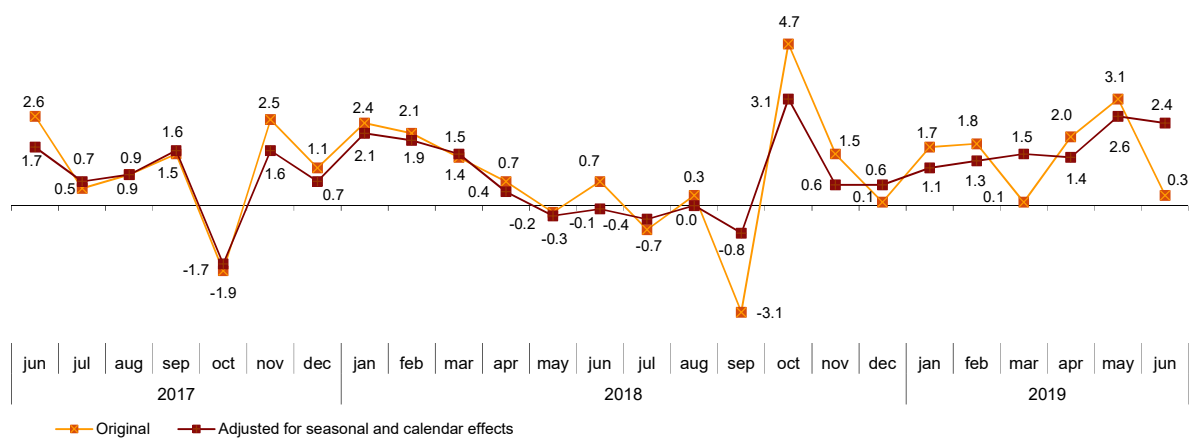
Annual trend of sales in retail trade

In June, the General Retail Trade Index, once adjusted for seasonal and calendar effects, registered a variation of 2.4% as compared with the same month of the previous year. This rate was two tenths lower than the one registered in May.

The original RTI series at constant prices registered an annual variation of 0.3%, this rate was 2.8 points below the rate of the previous month.

Retail Trade General Index at constant prices

Annual rates. Percentage



The seasonally and calendar adjusted index excluding service stations registered an annual variation of 1.9% in June. If these sales are broken down by type of product, *Food* increased by 0.9%, and *Non-food products* by 3.1%.

Retail trade sector sales. Annual rates at constant prices June 2019

| | Original index Annual rate (%) | Seasonally and calendar adjusted index Annual rate (%) |
|--|-----------------------------------|--|
| GENERAL INDEX | 0.3 | 2.4 |
| Service stations | 3.2 | 4.4 |
| General Index without service stations | -0.1 | 1.9 |
| - Food | -1.8 | 0.9 |
| - Non-food products | 1.3 | 3.1 |
| - Personal equipment | 1.4 | 1.9 |
| - Household equipment | -0.8 | 2.6 |
| - Other goods | 0.2 | 2.6 |
| Distribution class | | |
| - Single retail stores | -1.5 | 1.1 |
| - Small chain stores | 1.8 | 4.2 |
| - Large chain stores | 0.3 | 2.5 |
| - Department stores | 0.9 | 2.4 |

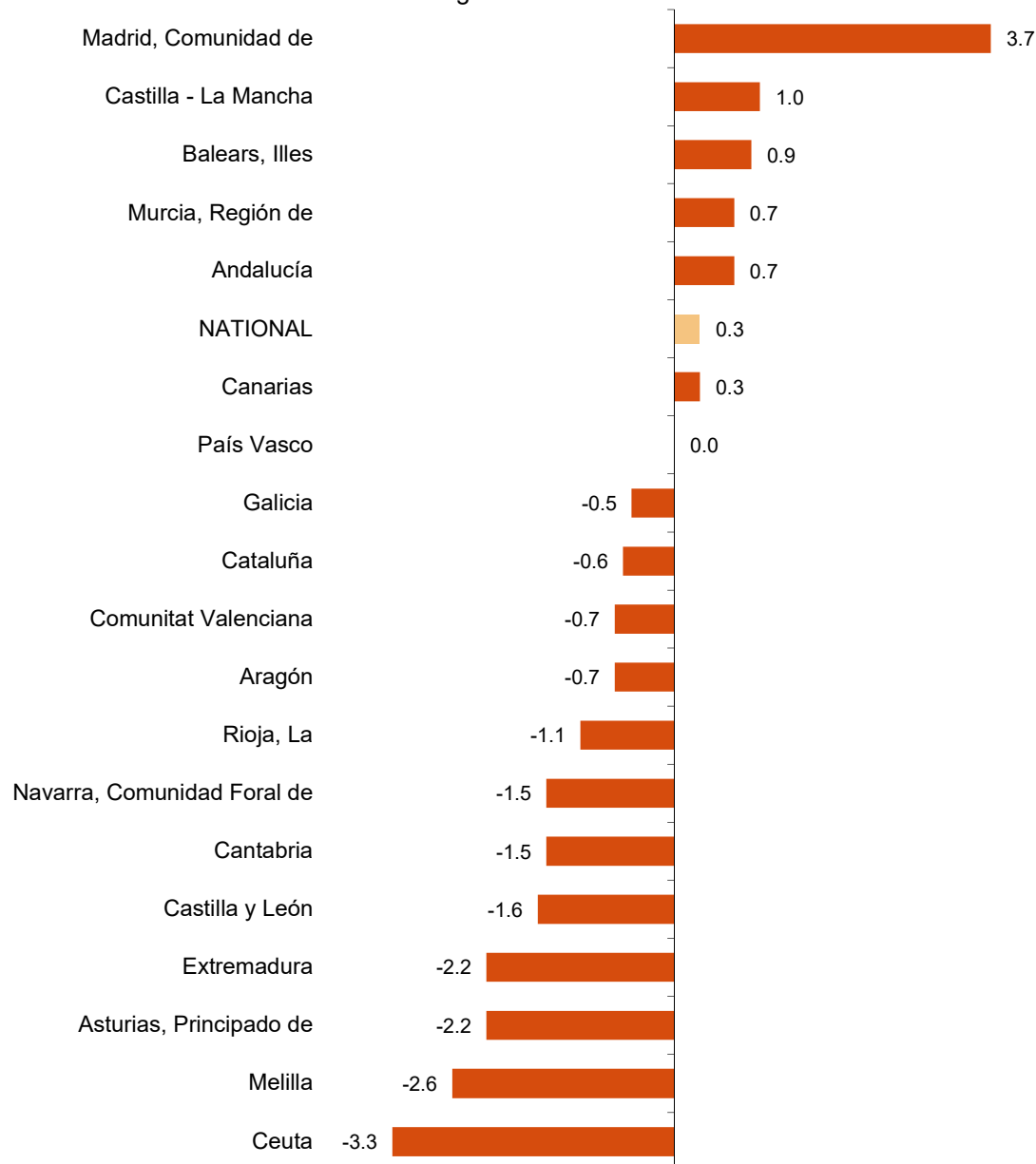
Results by Autonomous Community. Annual rates of sales. Original series

Sales increased in the annual rate in six Autonomous Communities in June and decreased in 10.

Comunidad de Madrid (3.7%), Castilla - La Mancha (1.0%) and Illes Balears (0.9%) registered the greatest increases. In turn, Principado de Asturias, Extremadura (both with -2.2%) and Castilla y León (-1.6%) registered the greatest decreases.

General indices: national and by Autonomous City and Community

June 2019. Annual sales rate. Percentage



Employment trend

In June, the employment index in the retail trade sector registered a variation of 1.0% as compared to the same month of 2018. This rate was equal to that recorded in May. Employment increased by 2.6% in *Service stations*.

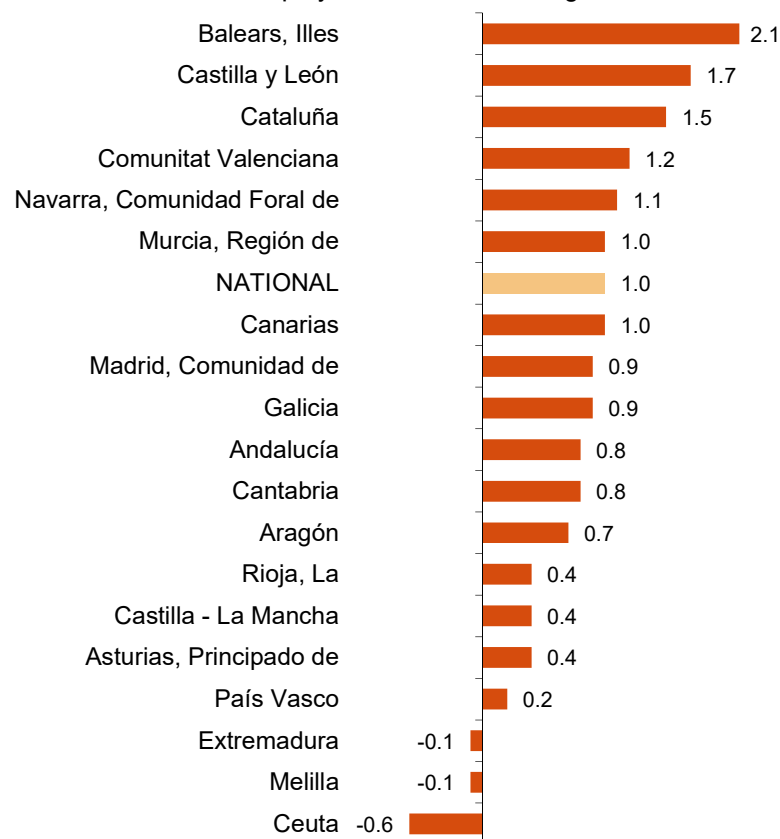
Employment indices: General and by distribution type June 2019

| | Index | Rate (%) | | |
|---|-------|----------|--------|----------------------|
| | | Monthly | Annual | Year-to-date average |
| GENERAL INDEX | 105.8 | 1.7 | 1.0 | 1.0 |
| Service stations | 109.2 | 2.6 | 2.6 | 2.5 |
| General Index w ithout service stations | 105.7 | 1.7 | 1.0 | 1.0 |
| - Single retail stores | 101.9 | 0.5 | 0.6 | 0.6 |
| - Small chain stores | 102.8 | 1.8 | 0.0 | 0.3 |
| - Large chain stores | 115.5 | 2.8 | 2.7 | 2.9 |
| - Department stores | 107.6 | 4.4 | 0.0 | -0.2 |

Results by Autonomous Community. Annual employment rate

Employment in retail trade increased in 16 Autonomous Communities in the annual rate. Illes Balears registered the greatest increase (2.1%).

General indices: national and by Autonomous Communities and Cities June 2019. Annual employment rate. Percentage



Revisions and update of data

On the press release day, INE has updated RTI data series corresponding to the last three months. In the case of calendar adjusted and seasonally and calendar adjusted series, according to INE standard, series are revised since its beginning. Results are available on INEBase.

Methodological note

The main objective of the Retail Trade Indices (RTI) is to ascertain the fundamental characteristics of the companies engaged in retail trade in Spain, which make it possible to measure, in the short term, the trend of activity in the sector.

Survey type: continuous monthly survey.

Base year: 2015.

Population scope: companies whose main activity is included within division 47 of the CNAE-2009 Retail trade, except of motor vehicles and motorcycles.

Geographical scope: the whole country.

Sample size: Approximately 12.000 companies.

Type of sampling: stratified random sampling.

Collection method: fill in a questionnaire by the respondent using one of the following methods: internet (IRIA system), e-mail, fax, telephone or by post.

Further information is available in the methodology:

http://www.ine.es/en/daco/daco43/notaccm15_en.pdf

And in the standardised methodological report:

<http://www.ine.es/dynt3/metadatos/en/RespuestaDatos.html?oe=30103>

For further information see **INEbase:** www.ine.es/en/ Twitter: [@es_ine](https://twitter.com/es_ine)

All press releases at: www.ine.es/en/prensa/prensa_en.htm

Press office: Telephone numbers: (+34) 91 583 93 63 /94 08 – gprensa@ine.es

Information Area: Telephone number: (+34) 91 583 91 00 – www.ine.es/infoine/?L=1

Retail Trade Indices (RTI). Base 2015

June 2019

Provisional data

1. Sales indices: General, by products and by distribution type Seasonally and calendar adjusted

| | Index | Rate (%) | | | Deflated index | Rate (%) | | |
|--|-------|----------|--------|----------------------|----------------|----------|--------|----------------------|
| | | Monthly | Annual | Year-to-date average | | Monthly | Annual | Year-to-date average |
| GENERAL INDEX | 111.0 | 0.0 | 2.3 | 2.7 | 108.0 | 0.1 | 2.4 | 1.7 |
| Service stations | 114.0 | -1.1 | 3.2 | 4.9 | 105.4 | 1.4 | 4.4 | 1.9 |
| General Index without service stations | 110.1 | -0.2 | 1.8 | 2.2 | 108.0 | -0.1 | 1.9 | 1.7 |
| - Food | 109.6 | 0.0 | 1.6 | 2.2 | 104.3 | -0.1 | 0.9 | 1.2 |
| - Non-food products | 110.4 | -0.1 | 2.4 | 2.3 | 110.9 | 0.2 | 3.1 | 1.9 |
| - Personal equipment | 110.4 | 0.4 | 2.9 | 2.5 | 107.4 | 0.2 | 1.9 | 1.5 |
| - Household equipment | 116.5 | 0.2 | 3.2 | 3.0 | 116.0 | 0.1 | 2.6 | 2.4 |
| - Other goods | 106.6 | -0.5 | 1.8 | 1.7 | 107.1 | -0.3 | 2.6 | 1.4 |
| Distribution class | | | | | | | | |
| - Single retail stores | 103.9 | -0.2 | 0.8 | 0.9 | 101.9 | -0.1 | 1.1 | 0.4 |
| - Small chain stores | 108.1 | -0.1 | 3.9 | 3.7 | 106.0 | 0.0 | 4.2 | 3.2 |
| - Large chain stores | 118.6 | -0.1 | 2.3 | 3.6 | 116.5 | 0.2 | 2.5 | 3.0 |
| - Department stores | 110.5 | 0.2 | 2.5 | 1.8 | 108.2 | 0.2 | 2.4 | 1.1 |

2. Sales indices: General, by products and by distribution type Calendar adjusted

| | Index | Rate (%) | | Deflated index | Rate (%) | |
|--|-------|----------|----------------------|----------------|----------|----------------------|
| | | Annual | Year-to-date average | | Annual | Year-to-date average |
| GENERAL INDEX | 113.1 | 2.1 | 2.6 | 109.5 | 2.5 | 1.8 |
| Service stations | 117.5 | 3.2 | 4.9 | 107.9 | 4.5 | 1.9 |
| General Index without service stations | 112.1 | 1.8 | 2.3 | 109.3 | 2.1 | 1.8 |
| - Food | 110.6 | 0.8 | 2.3 | 104.8 | 0.1 | 1.4 |
| - Non-food products | 113.2 | 2.7 | 2.3 | 112.9 | 3.7 | 2.0 |
| - Personal equipment | 116.6 | 4.0 | 2.6 | 107.5 | 3.1 | 1.6 |
| - Household equipment | 120.9 | 3.2 | 2.8 | 119.8 | 2.5 | 2.2 |
| - Other goods | 106.5 | 1.8 | 1.8 | 106.2 | 2.8 | 1.5 |
| Distribution class | | | | | | |
| - Single retail stores | 106.7 | 0.8 | 0.9 | 104.1 | 1.1 | 0.4 |
| - Small chain stores | 109.7 | 4.1 | 3.9 | 107.0 | 4.4 | 3.4 |
| - Large chain stores | 120.4 | 2.4 | 3.6 | 117.4 | 2.7 | 3.1 |
| - Department stores | 110.6 | 2.3 | 1.8 | 107.6 | 2.3 | 1.2 |

3. Sales indices: General, by products and by distribution type Unadjusted

| | Index | Rate (%) | | Deflated index | Rate (%) | |
|--|-------|----------|----------------------|----------------|----------|----------------------|
| | | Annual | Year-to-date average | | Annual | Year-to-date average |
| GENERAL INDEX | 111.6 | -0.1 | 2.3 | 108.0 | 0.3 | 1.5 |
| Service stations | 116.7 | 2.0 | 4.7 | 107.1 | 3.2 | 1.7 |
| General Index without service stations | 110.5 | -0.4 | 1.9 | 107.8 | -0.1 | 1.5 |
| - Food | 109.1 | -1.4 | 2.0 | 103.6 | -1.8 | 1.1 |
| - Non-food products | 111.5 | 0.3 | 1.9 | 111.2 | 1.3 | 1.7 |
| - Personal equipment | 115.4 | 2.3 | 2.3 | 106.3 | 1.4 | 1.4 |
| - Household equipment | 118.4 | -0.2 | 2.3 | 117.3 | -0.8 | 1.7 |
| - Other goods | 104.8 | -0.7 | 1.4 | 104.5 | 0.2 | 1.2 |
| Distribution class | | | | | | |
| - Single retail stores | 105.0 | -1.8 | 0.5 | 102.4 | -1.5 | 0.0 |
| - Small chain stores | 108.0 | 1.5 | 3.5 | 105.3 | 1.8 | 3.0 |
| - Large chain stores | 118.5 | -0.1 | 3.2 | 115.6 | 0.3 | 2.7 |
| - Department stores | 109.5 | 0.6 | 1.5 | 106.7 | 0.9 | 1.0 |
| - Food | 99.5 | -1.7 | -1.2 | 94.4 | -2.2 | -2.0 |
| - Non-food products | 114.1 | 1.3 | 2.6 | 113.8 | 2.3 | 2.3 |

4. Sales indices: National and by Autonomous City and Community Unadjusted

| | Index | Rate (%) | | Deflated index | Rate (%) | |
|-----------------------------|-------|----------|----------------------|----------------|----------|----------------------|
| | | Annual | Year-to-date average | | Annual | Year-to-date average |
| NATIONAL | 111.6 | -0.1 | 2.3 | 108.0 | 0.3 | 1.5 |
| Andalucía | 109.8 | 0.0 | 3.3 | 106.8 | 0.7 | 2.8 |
| Aragón | 108.8 | -1.3 | 1.0 | 105.6 | -0.7 | 0.3 |
| Asturias, Principado de | 103.0 | -2.5 | 0.2 | 99.9 | -2.2 | -0.7 |
| Baleares, Illes | 130.6 | 0.0 | 2.6 | 127.5 | 0.9 | 2.1 |
| Canarias | 106.2 | -0.2 | 1.8 | 103.3 | 0.3 | 1.1 |
| Cantabria | 103.5 | -1.5 | 0.2 | 99.8 | -1.5 | -0.9 |
| Castilla y León | 104.6 | -1.6 | 1.8 | 100.9 | -1.6 | 0.5 |
| Castilla - La Mancha | 112.0 | 0.5 | 2.6 | 108.1 | 1.0 | 1.8 |
| Cataluña | 109.1 | -0.5 | 1.8 | 104.3 | -0.6 | 0.8 |
| Comunitat Valenciana | 113.1 | -1.5 | 1.2 | 110.6 | -0.7 | 0.7 |
| Extremadura | 100.1 | -2.8 | -0.4 | 97.7 | -2.2 | -0.9 |
| Galicia | 109.6 | -1.2 | 0.7 | 106.3 | -0.5 | 0.1 |
| Madrid, Comunidad de | 120.9 | 3.5 | 4.8 | 117.4 | 3.7 | 3.5 |
| Murcia, Región de | 111.8 | 0.0 | 2.7 | 109.0 | 0.7 | 2.3 |
| Navarra, Comunidad Foral de | 113.2 | -0.9 | 2.7 | 108.5 | -1.5 | 1.0 |
| País Vasco | 109.6 | -0.1 | 1.8 | 105.8 | 0.0 | 0.8 |
| Rioja, La | 108.3 | -0.7 | 1.2 | 103.8 | -1.1 | -0.2 |
| Ceuta | 98.8 | -4.1 | -1.6 | 96.3 | -3.3 | -2.2 |
| Melilla | 104.1 | -4.2 | -0.1 | 101.8 | -2.6 | 0.4 |

5. Employment Indices: General and by distribution type

| | Index | Rate (%) | | |
|--|-------|----------|--------|----------------------|
| | | Monthly | Annual | Year-to-date average |
| GENERAL INDEX | 105.8 | 17 | 10 | 10 |
| Service stations | 109.2 | 2.6 | 2.6 | 2.5 |
| General Index without service stations | 105.7 | 17 | 10 | 10 |
| - Single retail stores | 101.9 | 0.5 | 0.6 | 0.6 |
| - Small chain stores | 102.8 | 18 | 0.0 | 0.3 |
| - Large chain stores | 115.5 | 2.8 | 2.7 | 2.9 |
| - Department stores | 107.6 | 4.4 | 0.0 | -0.2 |

6. Employment Indices: National and by Autonomous City and Community

| | Index | Rate (%) | | |
|-----------------------------|-------|----------|--------|----------------------|
| | | Monthly | Annual | Year-to-date average |
| NATIONAL | 105.8 | 17 | 10 | 10 |
| Andalucía | 103.0 | 19 | 0.8 | 0.8 |
| Aragón | 104.1 | 0.9 | 0.7 | 10 |
| Asturias, Principado de | 107.5 | 12 | 0.4 | 0.5 |
| Balears, Illes | 117.5 | 2.2 | 2.1 | 2.1 |
| Canarias | 108.6 | 0.9 | 10 | 11 |
| Cantabria | 103.1 | 17 | 0.8 | 0.5 |
| Castilla y León | 104.6 | 14 | 17 | 15 |
| Castilla - La Mancha | 102.3 | 10 | 0.4 | 0.7 |
| Cataluña | 105.8 | 2.4 | 15 | 12 |
| Comunitat Valenciana | 109.8 | 2.8 | 12 | 14 |
| Extremadura | 102.7 | 11 | -0.1 | -0.1 |
| Galicia | 104.9 | 18 | 0.9 | 0.7 |
| Madrid, Comunidad de | 106.0 | 0.9 | 0.9 | 10 |
| Murcia, Región de | 106.7 | 19 | 10 | 11 |
| Navarra, Comunidad Foral de | 104.6 | 0.5 | 1.1 | 18 |
| País Vasco | 104.0 | 10 | 0.2 | 0.9 |
| Rioja, La | 106.0 | 12 | 0.4 | 0.6 |
| Ceuta | 102.8 | 19 | -0.6 | -0.3 |
| Melilla | 104.0 | 15 | -0.1 | 0.4 |