

Retail Trade Indices (RTI). Base 2005
July 2010. *Provisional data*

Main Results

- The **General Retail Trade Index** at constant prices registers an **interannual variation of - 2.2%** in July, more than three points below that registered in June.
- The **average rate** of retail sales stands at **-1.1%** during the first seven months of the year, as compared with the same period of 2009.
- **Large chain stores is the only distribution class to increase sales** in July as compared with the same month the previous year.
- **Employment** in the retail sector **decreases 1.0%** as compared with July 2009.
- Sales decrease in the interannual rate in all **Autonomous Communities**, except in Galicia. Employment only increases in three of them.

Evolution of trade in general and by type of product

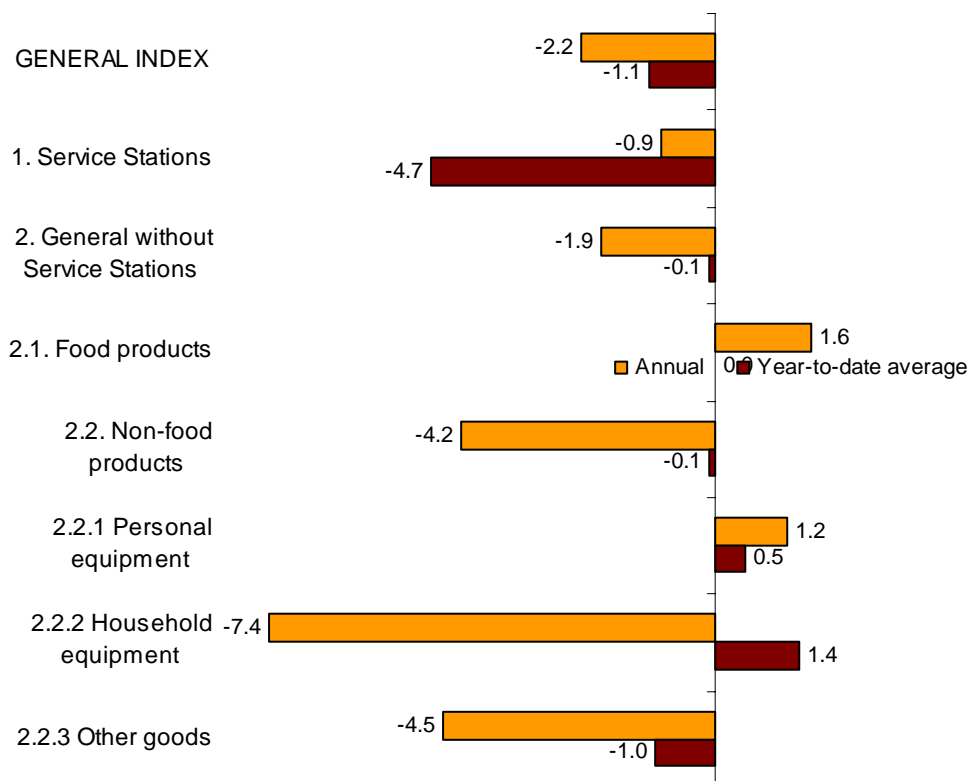
Sales in retail trade at constant prices (that is, after eliminating the prices' effect) registered an interannual rate of -2.2% in July 2010, indicating a decrease of 3.1 points as compared with June.

Sales, excluding service stations, presented an annual rate, in constant terms, of -1.9%. The breakdown of these sales by type of product showed an increase of 1.6% in food products, whereas non-food products decrease 4.2%. This decrease was due to both *Household Equipment* (-7.4%) and *Other goods* (-4.5%).

In turn, sales in service stations, after adjusting the prices' effect, decreased 0.9% as compared with July 2009.

The average for the General Retail Trade Index for the first seven months of the year registered a variation rate of -1.1% as compared with the same period the previous year. This rate was two tenths lower than that of the average for the first six months of the year.

Annual and average rates at constant prices General index and by type of product



Evolution of trade, by distribution class

Large chain stores were the only distribution class to increase sales in July, as compared with the same month the previous year, with a rate of 4.3%.

For the first seven months of the year 2010, the *Large chain stores* were also the only ones to register a positive rate (2.6%) in the average for sales.

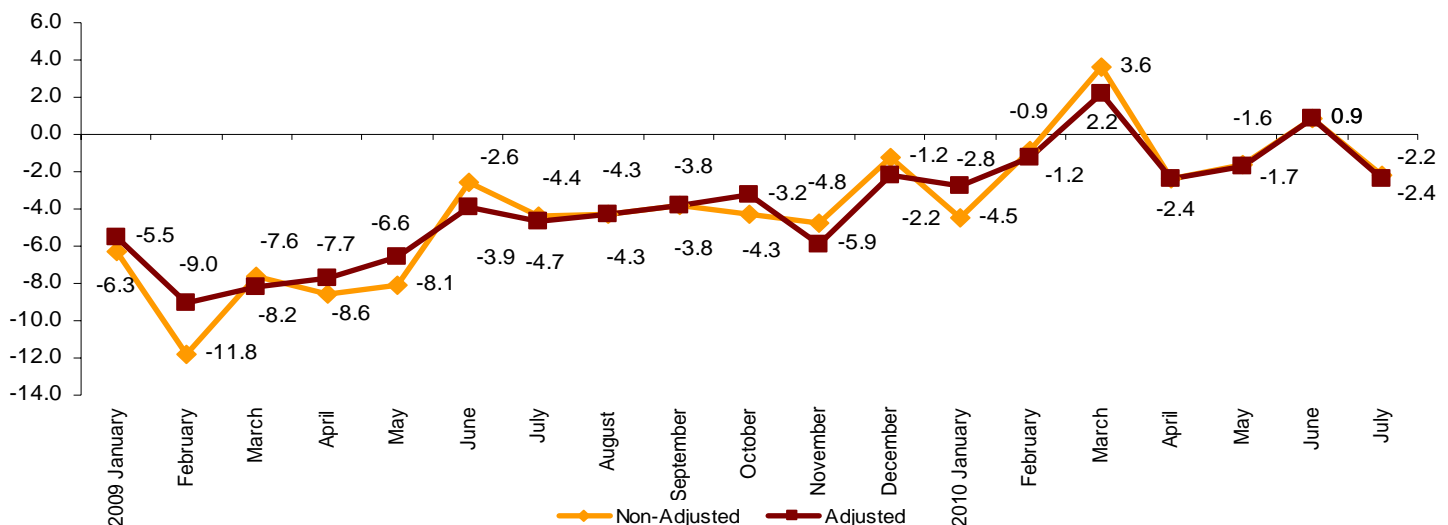
National indices by distribution class

	Deflated Index	% variation	
		Annual	Year-to-date average
GENERAL	99.9	-2.2	-1.1
1. Service Station	103.5	-0.9	-4.7
2. General Index without Service	100.5	-1.9	-0.1
2.1. Single retail	88.4	-4.3	-1.4
2.2. Small chain	95.0	-4.2	-2.5
2.3. Large chain stores	131.1	4.3	2.6
2.4. Department	102.5	-2.2	-0.4

Evolution of trade, adjusted for the calendar effect

After eliminating the calendar effect, that is, the difference between the number of working days in a given month in different years, the Retail Trade Index at constant prices registered a variation of **-2.4%** in July. The interannual variation of the adjusted index stood 3.2 points below that registered in June.

Annual evolution of the deflated RTI Adjusted and Non-adjusted General Index



Evolution of employment, by distribution class

The employment index in the retail trade sector in July showed an annual rate of **-1.0%**, two tenths above that registered in June.

Employment decreased 0.4% in *Service stations* as compared with July 2009. This same trend was observed in all distribution classes, where *Small chain stores* were the trade formula accounting for the greatest decrease, with **-3.1%**.

In the retail sector as a whole, average employment registered a rate of **-1.7%** in the first seven months of the year, as compared with the same period the previous year

National employment indices

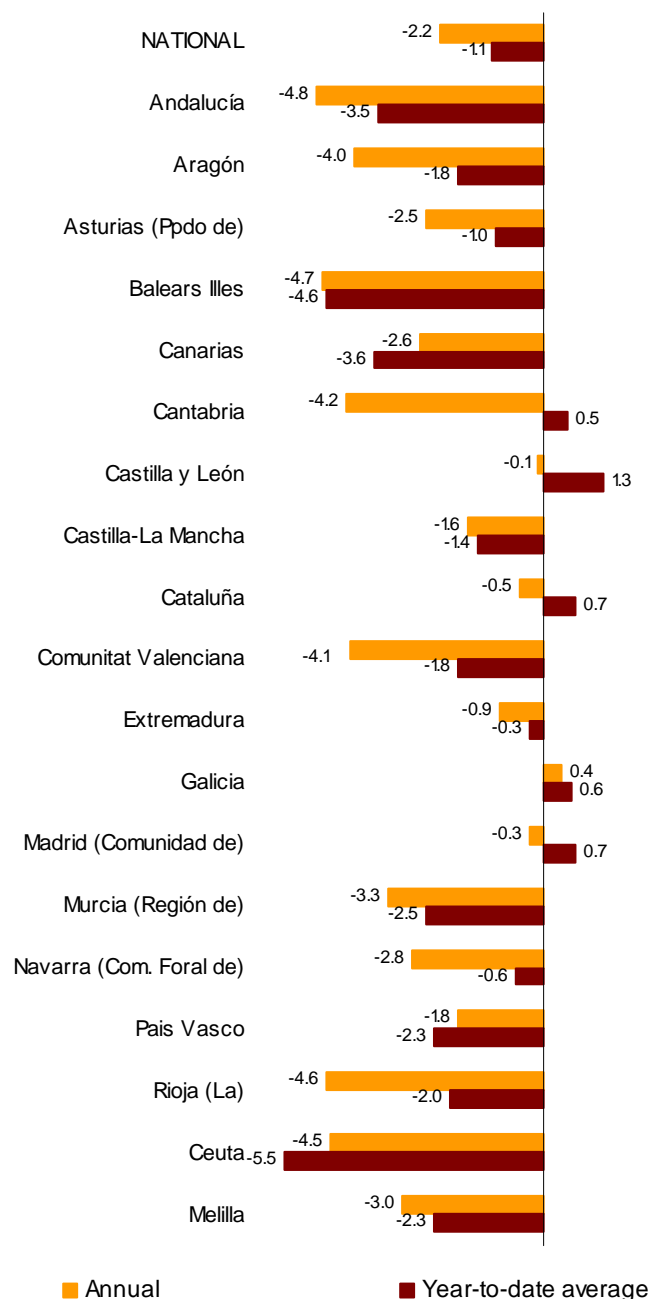
	Deflated Index	% variation	
		Annual	Year-to-date average
GENERAL INDEX	98.9	-1.0	-1.7
1. Service Station Index	103.2	-0.4	-0.4
2. General Index without Service Stations	98.7	-1.0	-1.8
2.1. Single retail stores	97.2	-0.5	-1.3
2.2. Small chain stores	92.7	-3.1	-3.6
2.3. Large chain stores	113.0	-0.2	-1.4
2.4. Department stores	98.7	-0.2	-2.4

Results by Autonomous Community. Variation rates in sales

Retail sales fell as compared with July 2009 in all Autonomous Communities, except in Galicia (which increased 0.4%).

Andalucía (−4.8%), Illes Balears (−4.7%) and La Rioja (−4.6%) were the ones showing the largest interannual drops this month.

**Annual and average rates at constant prices
General index by Autonomous Community**

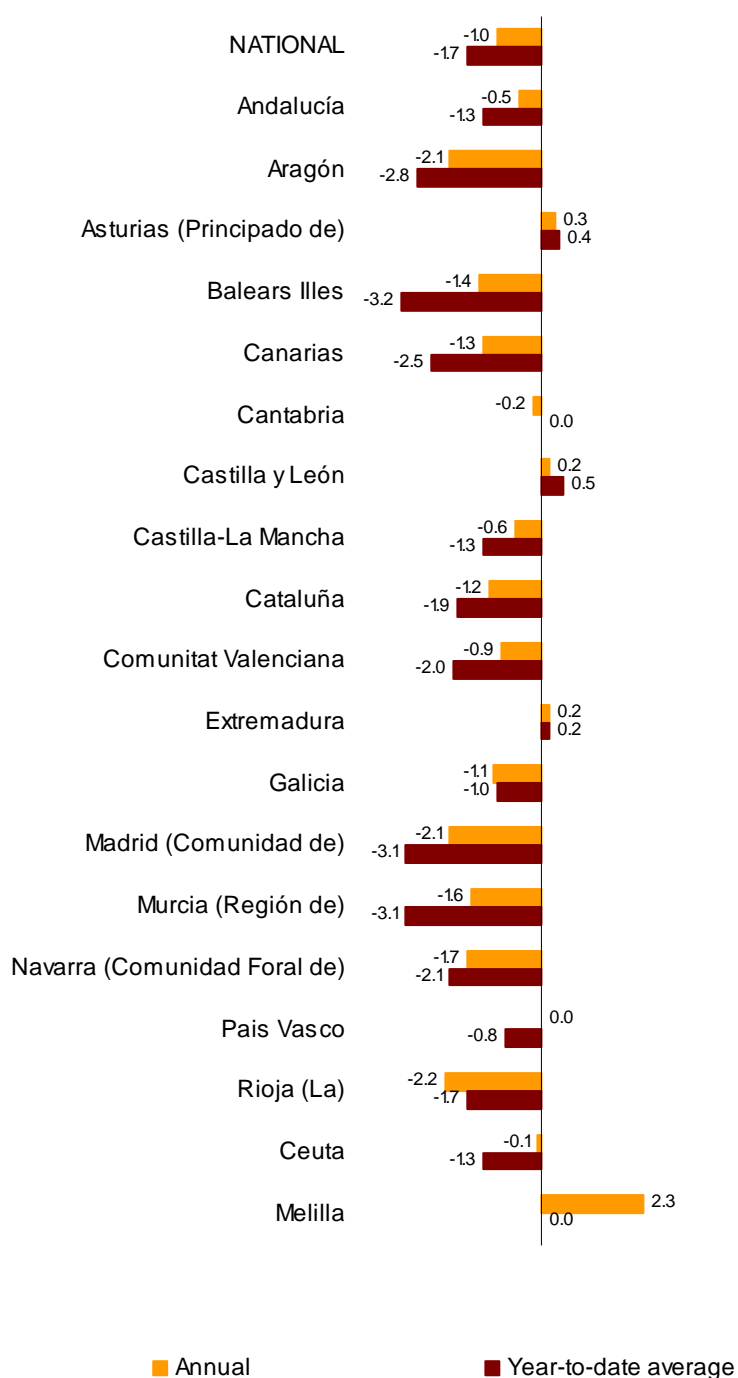


Results by Autonomous Community. Employment variation rates

Employment in retail trade increases in July in Principado de Asturias (0.3%), Castilla y León and Extremadura (both with 0.2%).

In the rest of the Communities employment decreased. La Rioja (–2.2%) and Aragón and Comunidad de Madrid (both with –2.1%) registered the greatest decreases

**Annual and average rates of the employment index
General index by Autonomous Community**



Retail Trade Index. Base 2005

July 2010

Provisional data

1. National indices

	Index	% variation		Deflated index	% variation	
		Annual	Year-to-date average		Annual	Year-to-date average
GENERAL INDEX	110.3	0.3	1.1	99.9	-2.2	-1.1
1. Service Stations	126.0	13.2	13.9	103.5	-0.9	-4.7
2. General Index without Service Stations	109.0	-0.8	0.0	100.5	-1.9	-0.1
2.1. Food products	119.4	2.5	0.1	103.7	1.6	0.0
2.2. Non-food products	102.7	-2.9	0.0	99.6	-4.2	-0.1
2.2.1 Personal equipment	119.7	1.0	-0.3	127.4	1.2	0.5
2.2.2 Household equipment	85.3	-6.7	1.8	77.6	-7.4	1.4
2.2.3 Other goods	105.5	-3.2	-0.9	102.3	-4.5	-1.0

2. National Indices by distribution class

	Index	% variation		Deflated index	% variation	
		Annual	Year-to-date average		Annual	Year-to-date average
GENERAL INDEX	110.3	0.3	1.1	99.9	-2.2	-1.1
1. Service Station Index	126.0	13.2	13.9	103.5	-0.9	-4.7
2. General Index without Service Stations	109.0	-0.8	0.0	100.5	-1.9	-0.1
2.1. Single retail stores	95.9	-3.2	-1.2	88.4	-4.3	-1.4
2.2. Small chain stores	103.1	-3.2	-2.3	95.0	-4.2	-2.5
2.3. Large chain stores	142.3	5.5	2.7	131.1	4.3	2.6
2.4. Department stores	111.3	-1.1	-0.3	102.5	-2.2	-0.4

3. Department Store Indices

	Index	% variation		Deflated index	% variation	
		Annual	Year-to-date average		Annual	Year-to-date average
DEPARTMENT STORE INDEX	111.3	-1.1	-0.3	102.5	-2.2	-0.4
1. Food products	104.3	0.1	-5.0	90.5	-0.7	-5.0
2. Non-food products	114.7	-1.7	2.0	111.3	-2.9	1.9

4. National Indices. Adjusted for calendar effect

	Index	% variation		Deflated index	% variation	
		Annual	Year-to-date average		Annual	Year-to-date average
GENERAL INDEX	109.0	0.1	1.0	98.7	-2.4	-1.1
1. Service Stations	125.0	13.1	13.9	102.4	-1.0	-4.8
2. General Index without Service Stations	107.7	-1.0	0.0	99.2	-2.1	-0.1
2.1. Department Store Index	110.4	-1.3	-0.3	101.7	-2.4	-0.4

5. Annual rates of National indices

	General Retail Trade Index				General Index without Service Stations			
	Current Prices		Constant Prices		Current Prices		Constant Prices	
	Original	Adjusted ¹	Original	Adjusted ¹	Original	Adjusted ¹	Original	Adjusted ¹
2009 July	-7.7	-8.0	-4.4	-4.7	-6.1	-6.4	-4.9	-5.2
August	-6.5	-6.5	-4.3	-4.3	-5.5	-5.5	-4.5	-4.5
September	-6.1	-6.1	-3.8	-3.8	-5.0	-5.0	-3.8	-3.8
October	-6.0	-4.8	-4.3	-3.2	-5.1	-4.0	-3.9	-2.8
November	-4.7	-5.9	-4.8	-5.9	-4.3	-5.4	-3.5	-4.7
December	-0.3	-1.2	-1.2	-2.2	-0.8	-1.7	-0.1	-1.1
November	-3.0	-1.3	-4.5	-2.8	-3.8	-2.1	-3.2	-1.4
February	0.3	0.0	-0.9	-1.2	-0.5	-0.8	0.2	-0.1
March	5.8	4.3	3.6	2.2	4.9	3.4	5.3	3.8
April	0.1	0.1	-2.4	-2.4	-1.1	-1.1	-1.2	-1.2
May *	1.2	1.1	-1.6	-1.7	-0.1	-0.2	-0.6	-0.7
June *	3.2	3.1	0.9	0.9	2.2	2.2	1.5	1.4
July	0.3	0.1	-2.2	-2.4	-0.8	-1.0	-1.9	-2.1

¹ Index rates adjusted for calendar effects

* Revised figure

6. National Employment Indices by distribution class

	Index	% variation on		
		Previous month	Same month	Year-to-date average
GENERAL INDEX	98.9	0.4	-1.0	-1.7
1. Service Stations	103.2	1.8	-0.4	-0.4
2. General Index without Service Stations	98.7	0.4	-1.0	-1.8
2.1. Single retail stores	97.2	0.3	-0.5	-1.3
2.2. Small chain stores	92.7	-0.7	-3.1	-3.6
2.3. Large chain stores	113.0	0.8	-0.2	-1.4
2.4. Department stores	98.7	2.6	-0.2	-2.4

7. General Retail Trade Indices of Autonomous Communities

	Index	% variation		Deflated index	% variation	
		Annual	Year-to-date average		Annual	Year-to-date average
NATIONAL INDEX	110.3	0.3	1.1	99.9	-2.2	-1.1
Andalucía	105.9	-2.5	-1.5	96.0	-4.8	-3.5
Aragón	109.0	-1.5	0.3	98.6	-4.0	-1.8
Asturias (Principado de)	116.0	0.1	1.1	106.2	-2.5	-1.0
Balears (Illes)	119.1	-2.8	-2.5	107.5	-4.7	-4.6
Canarias	101.8	-1.0	-2.5	94.0	-2.6	-3.6
Cantabria	121.0	-1.9	2.7	108.4	-4.2	0.5
Castilla y León	118.4	2.6	3.6	106.8	-0.1	1.3
Castilla-La Mancha	109.4	1.1	0.9	99.5	-1.6	-1.4
Cataluña	114.4	2.3	3.1	102.7	-0.5	0.7
Comunitat Valenciana	108.5	-1.9	0.1	98.4	-4.1	-1.8
Extremadura	116.4	1.5	1.7	105.6	-0.9	-0.3
Galicia	119.0	2.7	2.7	108.5	0.4	0.6
Madrid (Comunidad de)	106.8	2.3	3.0	97.0	-0.3	0.7
Murcia (Región de)	109.0	-1.0	-0.2	98.0	-3.3	-2.5
Navarra (Comunidad Foral de)	108.5	-0.2	1.7	98.8	-2.8	-0.6
País Vasco	109.2	0.5	-0.4	98.7	-1.8	-2.3
Rioja (La)	105.0	-2.3	-0.1	95.1	-4.6	-2.0
Ceuta	113.8	-2.2	-3.6	103.4	-4.5	-5.5
Melilla	113.5	-0.4	0.5	102.1	-3.0	-2.3

8. General Indices without Service Stations, by Autonomous Community

	Index	% variation		Deflated index	% variation	
		Annual	Year-to-date average		Annual	Year-to-date average
NATIONAL INDEX	109.0	-0.8	0.0	100.5	-1.9	-0.1
Andalucía	106.3	-2.4	-1.6	98.3	-3.3	-1.5
Aragón	109.3	-1.7	0.1	100.3	-3.1	-0.3
Asturias (Principado de)	115.4	-0.8	0.2	107.5	-2.1	0.2
Balears (Illes)	119.0	-2.9	-2.6	109.4	-3.4	-2.6
Canarias	100.8	-1.1	-3.3	95.4	-0.7	-2.0
Cantabria	119.8	-2.7	2.2	109.3	-3.6	2.1
Castilla y León	117.2	1.5	2.6	107.2	0.1	2.1
Castilla-La Mancha	110.0	0.2	0.3	102.0	-1.2	0.0
Cataluña	114.2	1.5	2.3	104.1	-0.1	1.7
Comunitat Valenciana	108.1	-2.4	-0.6	100.0	-3.3	-0.5
Extremadura	113.5	0.9	0.8	104.5	-0.4	0.6
Galicia	117.9	1.9	2.0	109.5	0.9	2.0
Madrid (Comunidad de)	100.4	-1.7	-0.1	92.7	-2.9	-0.4
Murcia (Región de)	109.8	-0.9	-0.1	100.2	-1.9	-0.3
Navarra (Comunidad Foral de)	106.2	-1.6	0.2	98.2	-3.1	-0.4
País Vasco	107.8	-0.2	-0.9	98.8	-1.3	-1.1
Rioja (La)	105.3	-2.6	-0.7	96.9	-3.8	-0.8
Ceuta	115.8	-1.0	-2.6	108.1	-1.4	-2.3
Melilla	112.8	0.3	0.4	104.1	-0.8	-0.4

9. General Employment Indices of Autonomous Communities

	Index	% variation on		
		Previous month	Same month previous year	Year-to-date average
NATIONAL INDEX	98.9	0.4	-1.0	-1.7
Andalucía	96.0	0.6	-0.5	-1.3
Aragón	98.1	1.1	-2.1	-2.8
Asturias (Principado de)	105.0	0.7	0.3	0.4
Balears (Illes)	99.7	2.0	-1.4	-3.2
Canarias	94.2	0.9	-1.3	-2.5
Cantabria	104.8	0.7	-0.2	0.0
Castilla y León	105.2	0.7	0.2	0.5
Castilla-La Mancha	98.8	0.6	-0.6	-1.3
Cataluña	98.1	-0.6	-1.2	-1.9
Comunitat Valenciana	98.1	1.0	-0.9	-2.0
Extremadura	101.3	0.2	0.2	0.2
Galicia	103.6	1.2	-1.1	-1.0
Madrid (Comunidad de)	98.4	-0.3	-2.1	-3.1
Murcia (Región de)	103.0	2.3	-1.6	-3.1
Navarra (Comunidad Foral de)	100.7	0.7	-1.7	-2.1
País Vasco	101.1	0.1	0.0	-0.8
Rioja (La)	98.0	-0.7	-2.2	-1.7
Ceuta	102.1	0.7	-0.1	-1.3
Melilla	102.5	0.2	2.3	0.0

10. General Employment Indices without Service Stations, by Autonomous Community

	Index	% variation on		
		Previous month	Same month previous year	Year-to-date average
NATIONAL INDEX	98.7	0.4	-1.0	-1.8
Andalucía	96.0	0.6	-0.4	-1.2
Aragón	98.1	1.1	-2.0	-2.8
Asturias (Principado de)	105.4	0.6	0.2	0.4
Balears (Illes)	99.7	2.1	-1.4	-3.2
Canarias	93.5	1.0	-1.4	-2.7
Cantabria	104.6	0.6	-0.4	-0.1
Castilla y León	105.6	0.6	0.2	0.7
Castilla-La Mancha	99.0	0.6	-0.5	-1.5
Cataluña	98.0	-0.6	-1.1	-1.9
Comunitat Valenciana	98.0	0.9	-1.0	-2.0
Extremadura	101.6	0.2	0.4	0.4
Galicia	103.7	1.2	-1.1	-1.1
Madrid (Comunidad de)	97.9	-0.4	-2.2	-3.2
Murcia (Región de)	103.1	2.3	-1.6	-3.1
Navarra (Comunidad Foral de)	100.5	0.6	-1.7	-2.3
País Vasco	100.9	0.0	0.0	-0.9
Rioja (La)	97.8	-0.8	-2.1	-1.6
Ceuta	102.2	0.7	-0.1	-1.4
Melilla	102.5	0.1	2.3	-0.1

For further information see INEbase - www.ine.es/en/welcome_en.htm All press releases at: www.ine.es/en/prensa/prensa_en.htm

Press Office: Telephone numbers: 91 583 93 63 / 94 08

Fax: 91 583 90 87 - gprensa@ine.es

Information Area: Telephone number: 91 583 91 00

Fax: 91 583 91 58 - www.ine.es/infoine