

Retail Trade Indices (RTI). Base 2005

August 2010. *Provisional data*

Main Results

- The **General Retail Trade Index** at constant prices registers an **interannual variation of -1.2%** in August, one point higher than that registered in July.
- The **average rate** of retail sales stands at **-1.1%** during the first eight months of the year, as compared with the same period of 2009.
- **Large chain stores and single retail stores** are the distribution classes that **increase sales** in August as compared with the same month the previous year.
- **Employment** in the retail sector **decreases 0.8%** as compared with August 2009.
- Sales increase in the interannual rate in Castilla y León, Cataluña and Comunidad de Madrid, and decrease in the rest of the **Autonomous Communities**. Employment increases in four Communities.

Evolution of trade in general and by type of product

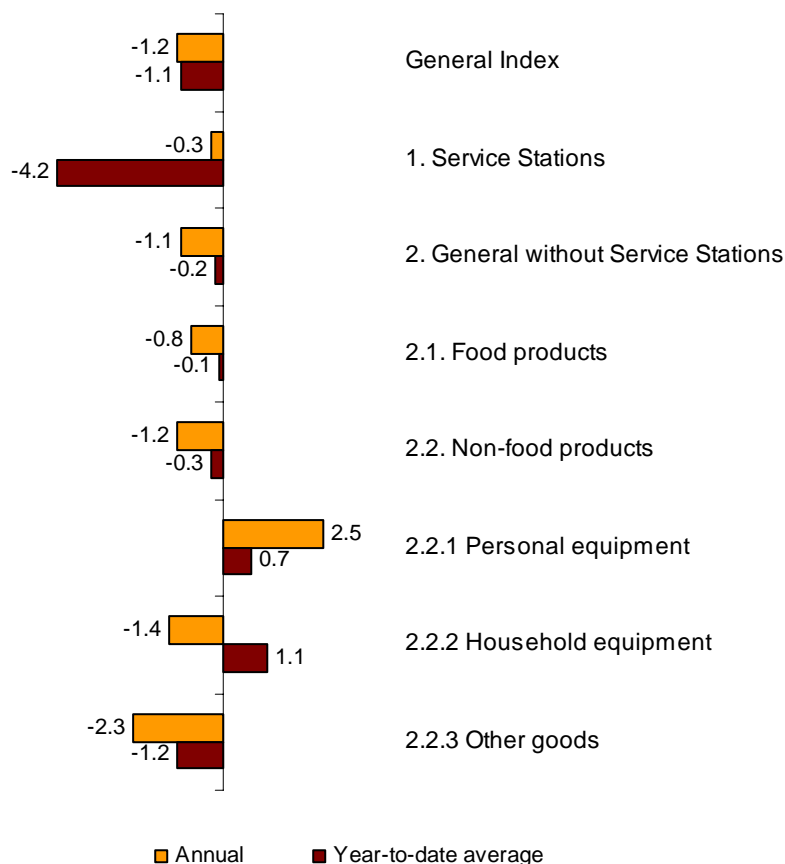
Sales in retail trade at constant prices (that is, after eliminating the prices' effect) registered an interannual rate of -1.2% in August 2010, indicating an increase of one point as compared with July.

Sales, excluding service stations, presented an annual rate, in constant terms, of -1.1%. The breakdown of these sales by type of product showed a decrease of 0.8% in food products, and non-food products decreased 1.2%. This decrease was due to both *Household Equipment* (-1.4%) and *Other goods* (-2.3%).

In turn, sales in service stations, after adjusting the prices' effect, decreased 0.3% as compared with August 2009.

The average for the General Retail Trade Index for the first eight months of the year registered a variation rate of -1.1% as compared with the same period the previous year. This rate was the same as that of the average for the first seven months of the year.

Annual and average rates at constant prices General index and by type of product



Evolution of trade, by distribution class

Single Retail Stores (2.1%) and *Large chain stores* (1.1%) were the two distribution classes to increase sales in August, as compared with the same month the previous year. Meanwhile, *Department stores* decreased their sales 5.3%.

For the first eight months of the year 2010, *Large chain stores* were the only ones to register a positive rate (2.3%) in the average for sales.

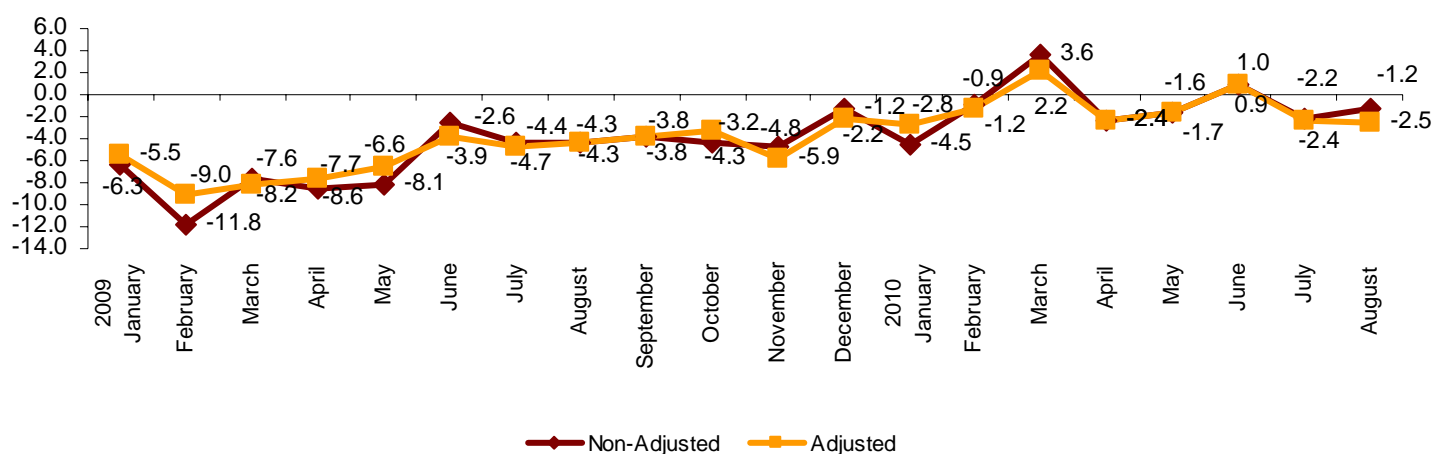
National Indices by distribution class

	Deflated Index	% variation	
		Annual	Year-to-date average
General Index	86.2	-1.2	-1.1
1. Service Stations	95.9	-0.3	-4.2
2. General without Service Stations	86.2	-1.1	-0.2
2.1. Single retail stores	74.7	2.1	-1
2.2. Small chain stores	81.9	-0.8	-2.3
2.3. Large chain stores	115.9	1.1	2.3
2.4. Department stores	86.7	-5.3	-1.1

Evolution of trade, adjusted for the calendar effect

After eliminating the calendar effect, that is, the difference between the number of working days in a given month in different years, the Retail Trade Index at constant prices registered a variation of **-2.5%** in August. The interannual variation of the adjusted index stood one tenth below that registered in July.

Annual evolution of the deflated RTI Adjusted and Non-adjusted General Index



Evolution of employment, by distribution class

The employment index in the retail trade sector in August showed an annual rate of **-0.8%**, two tenths above that registered in July.

Employment decreased 0.2% in *Service stations* as compared with August 2009. *Department stores* (0.4%) and *Single retail stores* (0.1%) were the commercial formula which increased its employment.

In the retail sector as a whole, average employment registered a rate of **-1.6%** in the first eight months of the year, as compared with the same period the previous year.

National Employment Indices

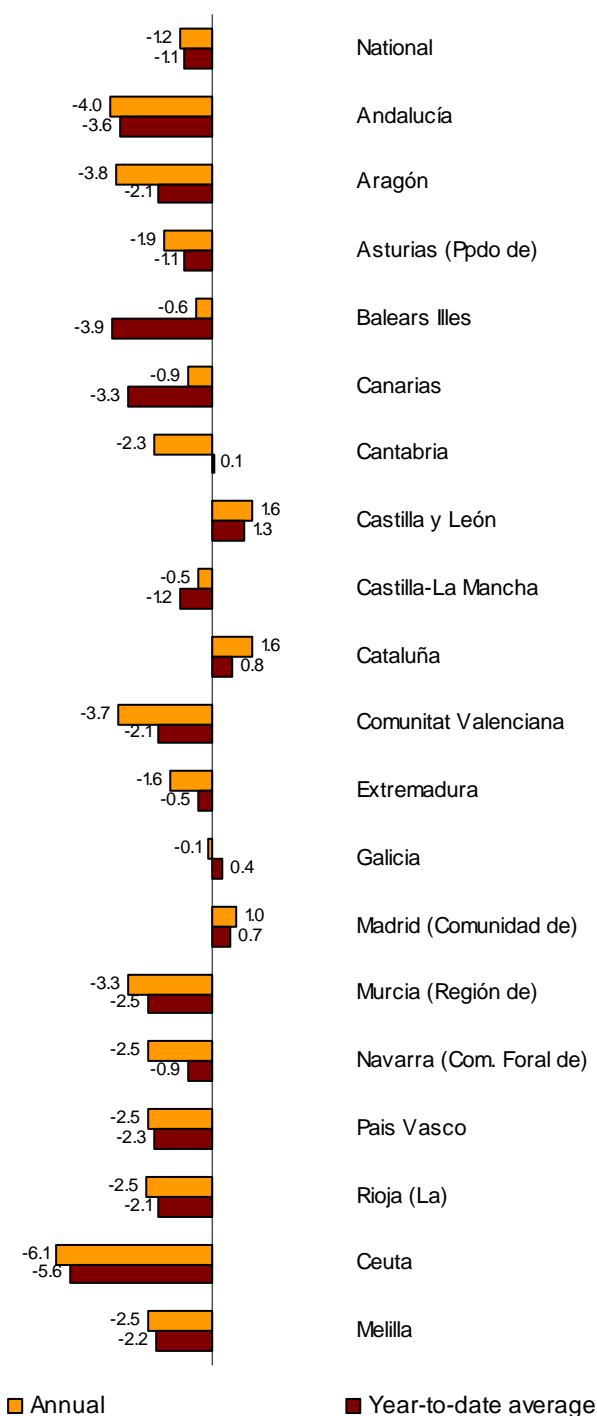
	Deflated Index	% variation	
		Annual	Year-to-date average
General Index	99.1	-0.8	-1.6
1. Service Stations	103.6	-0.2	-0.4
2. General without Service Stations	99.0	-0.8	-1.7
2.1. Single retail stores	97.5	0.1	-1.1
2.2. Small chain stores	93.1	-3.2	-3.6
2.3. Large chain stores	112.7	-0.1	-1.2
2.4. Department stores	99.2	0.4	-2.0

Results by Autonomous Community. Variation rates in sales

Retail sales fell as compared with August 2009 in all Autonomous Communities, except in Castilla y León and Cataluña (both increased 1.6%) and Comunidad de Madrid (1.0%).

Andalucía (−4.0%), Aragón (−3.8%) and Comunitat Valenciana (−3.7%) were the ones showing the largest interannual drops this month.

**Annual and average rates at constant prices
General index by Autonomous Community**

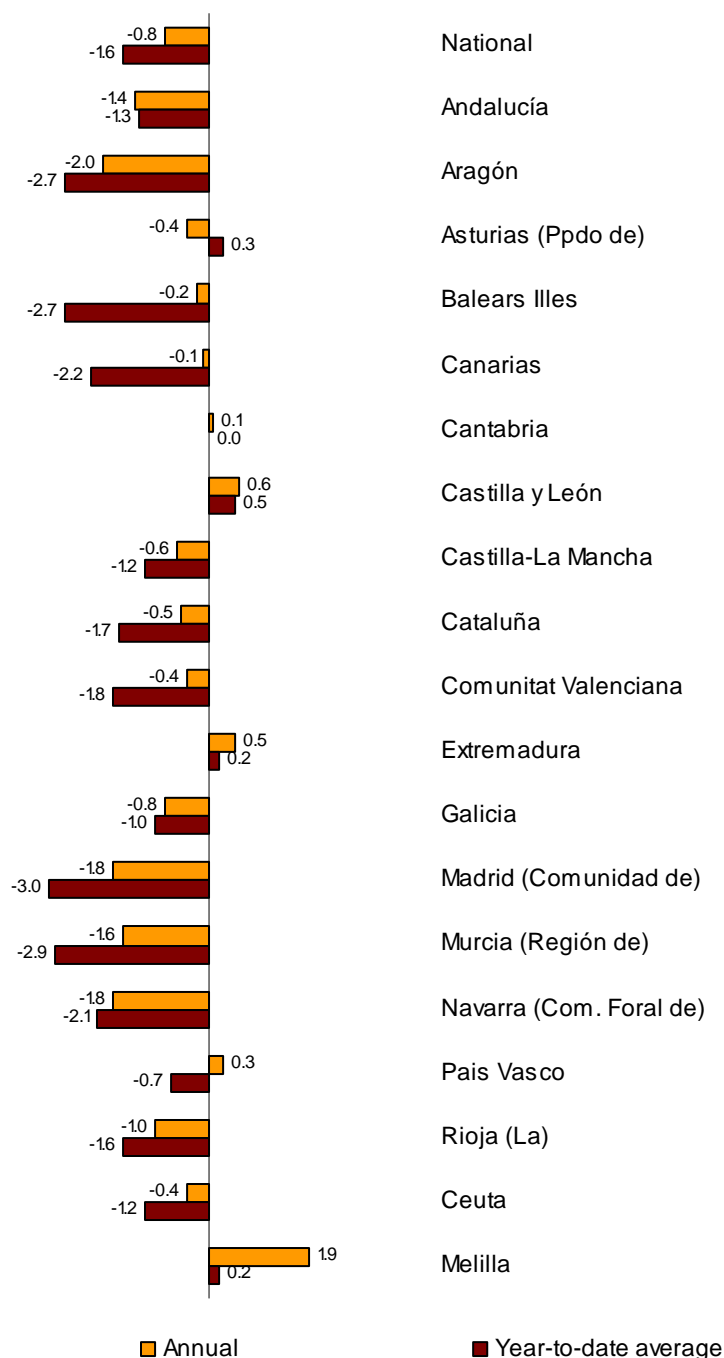


Results by Autonomous Community. Employment variation rates

Employment in retail trade increased in August in Castilla y León (0.6%), Extremadura (0.5%), País Vasco (0.3%) and Cantabria (0.1%).

In the rest of the Communities, employment decreased. Aragón registered the greatest decrease with a rate of -2.0%

**Annual and average rates of the employment index
General index by Autonomous Community**



Retail Trade Index. Base 2005

August 2010

Provisional data

1. National indices

	Index	% variation		Deflated index	% variation	
		Annual	Year-to-date average		Annual	Year-to-date average
General Retail Trade Index	95.3	0.9	1.0	86.2	-1.2	-1.1
1. Service Station Index	116.7	9.8	13.4	95.9	-0.3	-4.2
2. General Index without Service Stations	93.6	0.1	0.0	86.2	-1.1	-0.2
2.1. Food products	110.0	0.2	0.1	95.1	-0.8	-0.1
2.2. Non-food products	83.6	0.0	0.0	81.3	-1.2	-0.3
2.2.1 Personal equipment	84.5	2.5	-0.1	90.6	2.5	0.7
2.2.2 Household equipment	72.9	-0.7	1.5	66.3	-1.4	1.1
2.2.3 Other goods	92.0	-1.1	-0.9	89.4	-2.3	-1.2

2. National Indices by distribution class

	Index	% variation		Deflated index	% variationr	
		Annual	Year-to-date average		Annual	Year-to-date average
General Retail Trade Index	95.3	0.9	1.0	86.2	-1.2	-1.1
1. Service Station Index	116.7	9.8	13.4	95.9	-0.3	-4.2
2. General Index without Service Stations	93.6	0.1	0.0	86.2	-1.1	-0.2
2.1. Single retail stores	81.1	3.3	-0.7	74.7	2.1	-1.0
2.2. Small chain stores	88.9	0.4	-2.0	81.9	-0.8	-2.3
2.3. Large chain stores	125.9	2.4	2.6	115.9	1.1	2.3
2.4. Department stores	94.1	-4.2	-0.8	86.7	-5.3	-1.1

3. Department Store Indices

	Index	% variation		Deflated index	% variation	
		Annual	Year-to-date average		Annual	Year-to-date average
Department Store Index	94.1	-4.2	-0.8	86.7	-5.3	-1.1
1. Food products	96.0	-6.1	-5.1	83.0	-7.0	-5.3
2. Non-food products	93.2	-3.2	1.4	90.6	-4.4	1.1

4. National Indices. Adjusted for calendar effect

	Index	% variation		Deflated index	% variation	
		Annual	Year-to-date average		Annual	Year-to-date average
General Retail Trade Index	96.1	-0.5	0.8	87.0	-2.5	-1.3
1. Service Station Index	117.4	8.8	13.2	96.6	-1.5	-4.4
2. General Index without Service Stations	94.4	-1.3	-0.2	87.0	-2.5	-0.4
2.1. Department Store Index	94.7	-5.1	-0.9	87.2	-6.2	-1.2

5. Annual rates of National indices

	General Retail Trade Index				General Index without Service Stations			
	Current Prices		Constant Prices		Current Prices		Constant Prices	
	Original	Adjusted ¹	Original	Adjusted ¹	Original	Adjusted ¹	Original	Adjusted ¹
2009 August	-6.5	-6.5	-4.3	-4.3	-5.5	-5.5	-4.5	-4.5
September	-6.1	-6.1	-3.8	-3.8	-5.0	-5.0	-3.8	-3.8
October	-6.0	-4.8	-4.3	-3.2	-5.1	-4.0	-3.9	-2.8
November	-4.7	-5.9	-4.8	-5.9	-4.3	-5.4	-3.5	-4.7
December	-0.3	-1.2	-1.2	-2.2	-0.8	-1.7	-0.1	-1.1
2010 January	-3.0	-1.3	-4.5	-2.8	-3.8	-2.1	-3.2	-1.4
December	0.3	0.0	-0.9	-1.2	-0.5	-0.8	0.2	-0.1
March	5.8	4.3	3.6	2.2	4.9	3.4	5.3	3.8
April	0.1	0.1	-2.4	-2.4	-1.1	-1.1	-1.2	-1.2
May	1.2	1.1	-1.6	-1.7	-0.1	-0.2	-0.6	-0.7
June	3.2	3.1	1.0	0.9	2.3	2.2	1.5	1.4
July	0.2	0.0	-2.2	-2.4	-0.9	-1.1	-2.0	-2.2
August	0.9	-0.5	-1.2	-2.5	0.1	-1.3	-1.1	-2.5

¹ Index rates adjusted for calendar effects

6. National Employment Indices by distribution class

	Index	% variation on		
		Previous month	Same month	Year-to-date average
General Retail Trade Index	99.1	0.2	-0.8	-1.6
1. Service Station Index	103.6	0.4	-0.2	-0.4
2. General Index without Service Stations	99.0	0.2	-0.8	-1.7
2.1. Single retail stores	97.5	0.3	0.1	-1.1
2.2. Small chain stores	93.1	0.5	-3.2	-3.6
2.3. Large chain stores	112.7	-0.4	-0.1	-1.2
2.4. Department stores	99.2	0.4	0.4	-2.0

7. General Retail Trade Indices of Autonomous Communities

	Index	% variation		Deflated index	% variation	
		Annual	Year-to-date average		Annual	Year-to-date average
National total	95.3	0.9	1.0	86.2	-1.2	-1.1
Andalucía	95.1	-1.9	-1.6	86.0	-4.0	-3.6
Aragón	95.6	-1.7	0.1	86.4	-3.8	-2.1
Asturias (Principado de)	107.6	0.2	1.0	98.5	-1.9	-1.1
Balears (Illes)	115.1	1.2	-1.9	104.3	-0.6	-3.9
Canarias	95.5	0.2	-2.2	88.4	-0.9	-3.3
Cantabria	118.6	-0.4	2.3	106.4	-2.3	0.1
Castilla y León	113.1	3.8	3.6	102.0	1.6	1.3
Castilla-La Mancha	100.8	1.8	1.1	91.6	-0.5	-1.2
Cataluña	91.4	4.1	3.3	82.1	1.6	0.8
Comunitat Valenciana	95.0	-1.9	-0.2	86.1	-3.7	-2.1
Extremadura	108.1	0.4	1.5	98.0	-1.6	-0.5
Galicia	110.8	1.6	2.4	101.0	-0.1	0.4
Madrid (Comunidad de)	83.3	3.2	3.0	75.6	1.0	0.7
Murcia (Región de)	96.0	-1.2	-0.2	86.1	-3.3	-2.5
Navarra (Comunidad Foral de)	104.7	-0.4	1.4	95.7	-2.5	-0.9
País Vasco	85.5	-0.8	-0.5	77.2	-2.5	-2.3
Rioja (La)	93.6	-0.7	-0.2	84.8	-2.5	-2.1
Ceuta	102.4	-4.2	-3.6	92.9	-6.1	-5.6
Melilla	105.0	-0.5	0.5	94.7	-2.5	-2.2

8. General Indices without Service Stations, by Autonomous Community

	Index	% variation		Deflated index	% variation	
		Annual	Year-to-date average		Annual	Year-to-date average
National total	93.6	0.1	0.0	86.2	-1.1	-0.2
Andalucía	94.7	-2.2	-1.7	87.4	-3.2	-1.8
Aragón	95.1	-1.8	-0.1	87.3	-3.3	-0.6
Asturias (Principado de)	106.8	-0.4	0.1	99.4	-1.8	-0.1
Balears (Illes)	115.1	1.1	-2.0	106.2	0.3	-2.1
Canarias	93.9	-0.4	-3.0	89.0	-0.1	-1.8
Cantabria	116.4	-1.5	1.7	106.2	-2.5	1.4
Castilla y León	110.5	2.9	2.6	101.1	1.5	2.0
	100.6	0.5	0.4	93.2	-1.0	0.0
Cataluña	90.9	3.4	2.5	82.8	1.7	1.8
Comunitat Valenciana	94.6	-2.2	-0.8	87.3	-3.2	-0.8
Extremadura	104.7	-0.4	0.6	96.4	-1.7	0.3
Galicia	109.0	1.0	1.7	101.2	0.1	1.5
Madrid (Comunidad de)	76.2	0.8	-0.1	70.3	-0.6	-0.5
Murcia (Región de)	96.0	-1.1	-0.1	87.5	-2.3	-0.4
Navarra (Comunidad Foral de)	102.7	-1.3	-0.1	95.4	-2.7	-0.7
País Vasco	83.9	-1.3	-1.0	76.8	-2.2	-1.2
Rioja (La)	94.2	-0.5	-0.6	86.7	-1.6	-0.9
Ceuta	104.0	-2.5	-2.6	96.8	-3.1	-2.4
Melilla	103.0	-1.6	0.2	95.1	-2.7	-0.7

9. General Employment Indices of Autonomous Communities

	Index	% variation on		
		Previous month	Same month previous year	Year-to-date average
National total	99.1	0.2	-0.8	-1.6
Andalucía	96.2	0.3	-1.4	-1.3
Aragón	98.0	0.1	-2.0	-2.7
Asturias (Principado de)	104.5	-0.5	-0.4	0.3
Balears (Illes)	100.7	0.7	-0.2	-2.7
Canarias	94.4	0.1	-0.1	-2.2
Cantabria	104.9	-0.3	0.1	0.0
Castilla y León	105.3	0.2	0.6	0.5
Castilla-La Mancha	99.0	0.1	-0.6	-1.2
Cataluña	98.9	0.7	-0.5	-1.7
Comunitat Valenciana	98.1	-0.1	-0.4	-1.8
Extremadura	101.4	0.1	0.5	0.2
Galicia	103.6	-0.1	-0.8	-1.0
Madrid (Comunidad de)	98.6	0.2	-1.8	-3.0
Murcia (Región de)	102.9	-0.2	-1.6	-2.9
Navarra (Comunidad Foral de)	100.4	-0.2	-1.8	-2.1
País Vasco	101.2	0.1	0.3	-0.7
Rioja (La)	98.6	0.6	-1.0	-1.6
Ceuta	102.5	0.2	-0.4	-1.2
Melilla	102.5	-0.2	1.9	0.2

10. General Employment Indices without Service Stations, by Autonomous Community

	Index	% variation on		
		Previous month	Same month previous year	Year-to-date average
National total	99.0	0.2	-0.8	-1.7
Andalucía	96.2	0.3	-1.5	-1.3
Aragón	98.0	0.0	-1.9	-2.7
Asturias (Principado de)	104.7	-0.5	-0.5	0.3
Balears (Illes)	100.7	0.6	-0.2	-2.7
Canarias	93.6	0.1	-0.2	-2.4
Cantabria	104.7	-0.3	-0.1	-0.1
Castilla y León	105.6	0.1	0.5	0.7
Castilla-La Mancha	99.1	0.0	-0.7	-1.4
Cataluña	98.8	0.7	-0.5	-1.7
Comunitat Valenciana	97.9	-0.2	-0.5	-1.8
Extremadura	101.7	0.1	0.7	0.4
Galicia	103.7	-0.1	-0.9	-1.0
Madrid (Comunidad de)	98.2	0.4	-1.7	-3.0
Murcia (Región de)	102.9	-0.4	-1.7	-2.9
Navarra (Comunidad Foral de)	100.1	-0.3	-1.9	-2.3
País Vasco	100.9	0.0	0.1	-0.7
Rioja (La)	98.3	0.6	-0.9	-1.5
Ceuta	102.5	0.2	-0.4	-1.3
Melilla	102.6	-0.1	1.9	0.2

For further information see INEbase - www.ine.es/en/welcome_en.htm All press releases at: www.ine.es/en/prensa/prensa_en.htm

Press Office: Telephone numbers: 91 583 93 63 / 94 08

Fax: 91 583 90 87 - gprensa@ine.es

Information Area: Telephone number: 91 583 91 00

Fax: 91 583 91 58 - www.ine.es/infoine