

**Retail Trade Indices (RTI). Base 2005**  
September 2010. *Provisional data*

**Main Results**

- The **General Retail Trade Index** at constant prices registers an **interannual variation of -2.9%** in September, more than one-and-a-half points below that registered in August.
- The **average rate** of retail sales stands at **-1.3%** during the first nine months of the year, as compared with the same period of 2009.
- **Large chain stores** is the **only distribution class that increases sales** in September, as compared with the same month the previous year.
- **Employment** in the retail sector **decreases 1.0%**, as compared with September 2009.
- Retail sales decrease in all **Autonomous Communities**, except in Castilla y León, where they remain the same. Employment also decreases, in all but three of the Communities.

**Evolution of trade in general and by type of product**

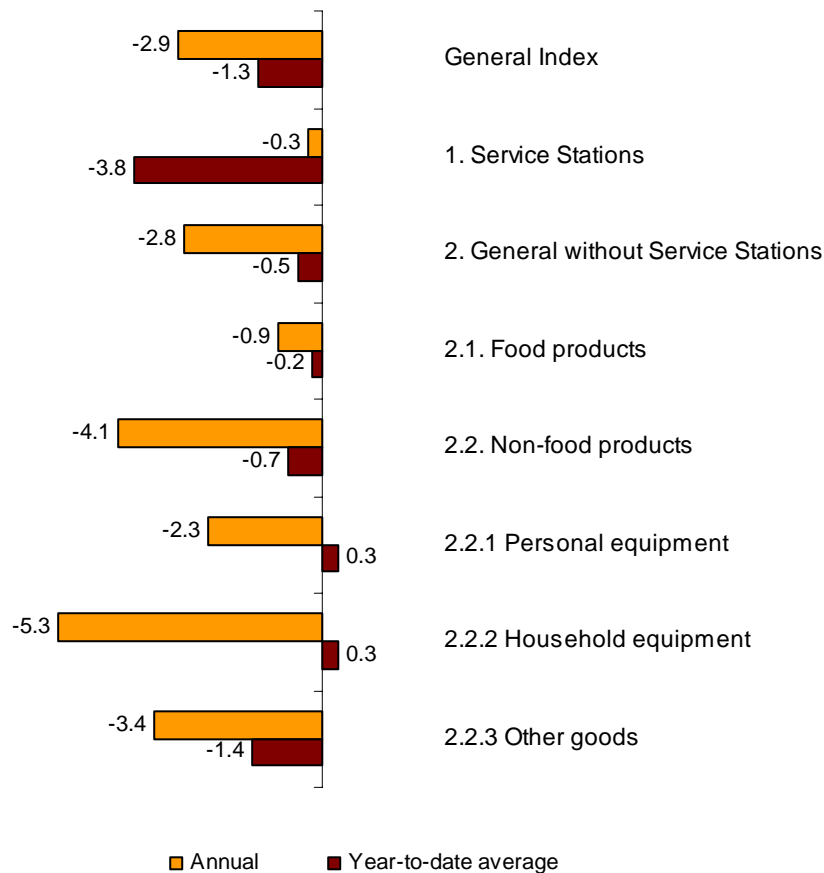
Sales in retail trade at constant prices (that is, after eliminating the prices' effect) registered an interannual rate of -2.9% in September 2010, indicating a decrease of 1.6 points as compared with August.

Sales, excluding service stations, presented an annual rate of -2.8%, in constant terms. The breakdown of these sales by type of product showed a decrease of 0.9% in food products, and non-food products decreased 4.1%. Within the latter, *Household Equipment* presented the greatest decrease with a rate of -5.3%.

In turn, sales in service stations, after adjusting the prices' effect, decreased 0.3% as compared with September 2009.

The average for the General Retail Trade Index for the first nine months of the year registered a variation rate of -1.3%, as compared with the same period the previous year. This rate was two tenths lower than that of the average for the first eight months of the year.

## Annual and average rates at constant prices General index and by type of product



## Evolution of trade, by distribution class

*Large chain stores* were the only distribution class to increase sales in September, as compared with the same month the previous year, with a rate of 0.6%. In turn, *Small chain stores* (-6.5%) presented the greatest decrease.

For the first nine months of the year 2010, *Large chain stores* were the only ones to register a positive rate (2.2%) in the average for sales.

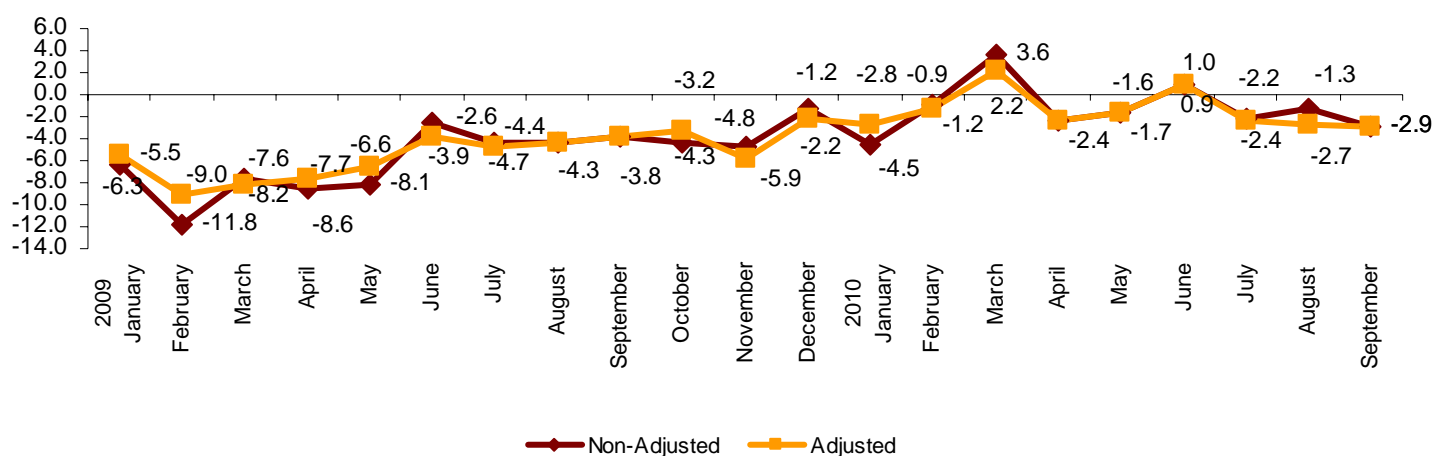
## National Indices by distribution class

|                                     | Deflated Index | % variation |                      |
|-------------------------------------|----------------|-------------|----------------------|
|                                     |                | Annual      | Year-to-date average |
| <b>General Index</b>                | <b>88.7</b>    | <b>-2.9</b> | <b>-1.3</b>          |
| 1. Service Stations                 | 94.6           | -0.3        | -3.8                 |
| 2. General without Service Stations | 89.0           | -2.8        | -0.5                 |
| 2.1. Single retail stores           | 83.3           | -3.3        | -1.3                 |
| 2.2. Small chain stores             | 81.4           | -6.5        | -2.8                 |
| 2.3. Large chain stores             | 113.8          | 0.6         | 2.2                  |
| 2.4. Department stores              | 82.3           | -5.8        | -1.6                 |

## Evolution of trade, adjusted for the calendar effect

The General Retail Trade Index was not affected by the calendar effect with an interannual rate of **-2.9%**, due to the fact that September 2010 had the same number of working days as the previous year. The interannual variation of the adjusted index stood two tenths below that registered in August.

### Annual evolution of the deflated RTI Adjusted and Non-adjusted General Index



## Evolution of employment, by distribution class

The employment index in the retail trade sector in September recorded an annual rate of **-1.0%**, two tenths below that registered in August.

Employment decreased 0.5% in *Service stations* as compared with September 2009. *Large chain stores* (0.1%) was the only distribution class which increased its employment, whereas *Single retail stores* showed no variation.

In the retail sector as a whole, average employment registered a rate of **-1.6%** in the first nine months of the year, as compared with the same period the previous year.

### National Employment Indices

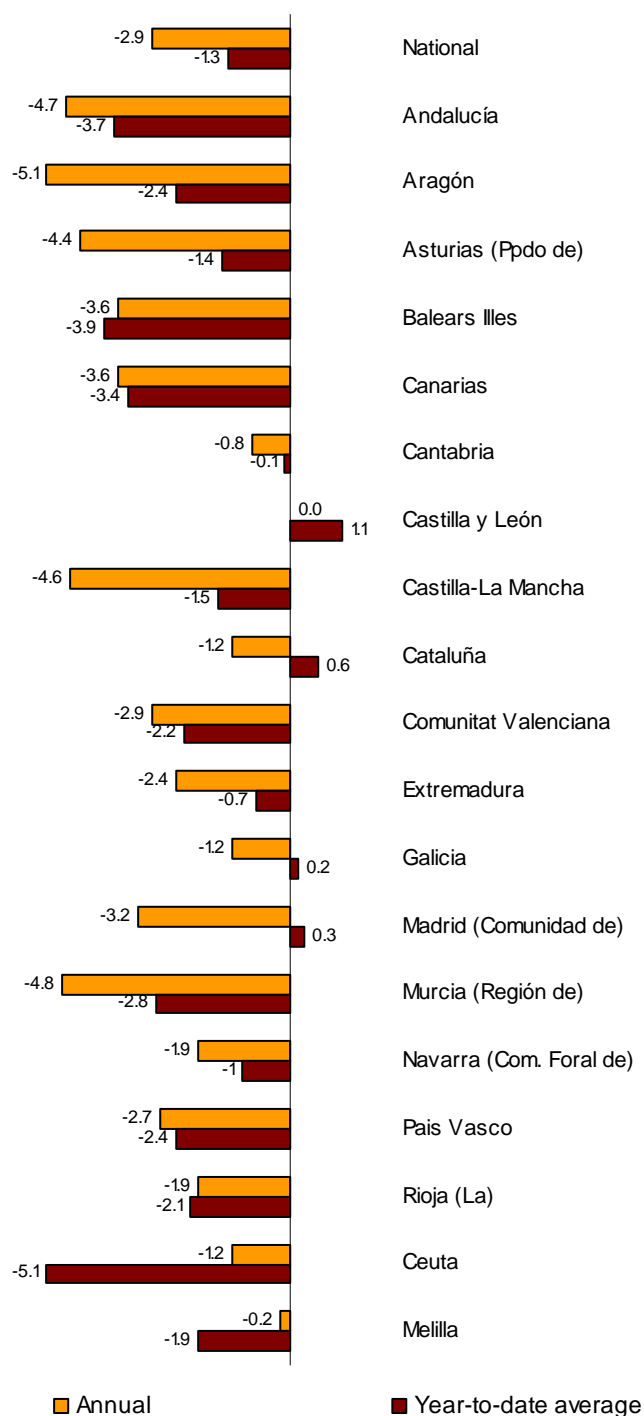
|                                     | Deflated Index | % variation |                      |
|-------------------------------------|----------------|-------------|----------------------|
|                                     |                | Annual      | Year-to-date average |
| <b>General Index</b>                | <b>98.1</b>    | <b>-1.0</b> | <b>-1.6</b>          |
| 1. Service Stations                 | 102.2          | -0.5        | -0.4                 |
| 2. General without Service Stations | 97.9           | -1.0        | -1.6                 |
| 2.1. Single retail stores           | 97.2           | 0.0         | -1.0                 |
| 2.2. Small chain stores             | 91.4           | -3.9        | -3.6                 |
| 2.3. Large chain stores             | 111.7          | 0.1         | -1.1                 |
| 2.4. Department stores              | 95.6           | -1.3        | -2.0                 |

## Results by Autonomous Community. Variation rates in sales

Retail sales fell, as compared with September 2009, in all Autonomous Communities, except in Castilla y León, which showed no variation.

Aragón (–5.1%), Región de Murcia (–4.8%), Andalucía (–4.7%) and Castilla La Mancha (–4.6%) were the Communities showing the greatest interannual drops this month.

**Annual and average rates at constant prices  
General index by Autonomous Community**

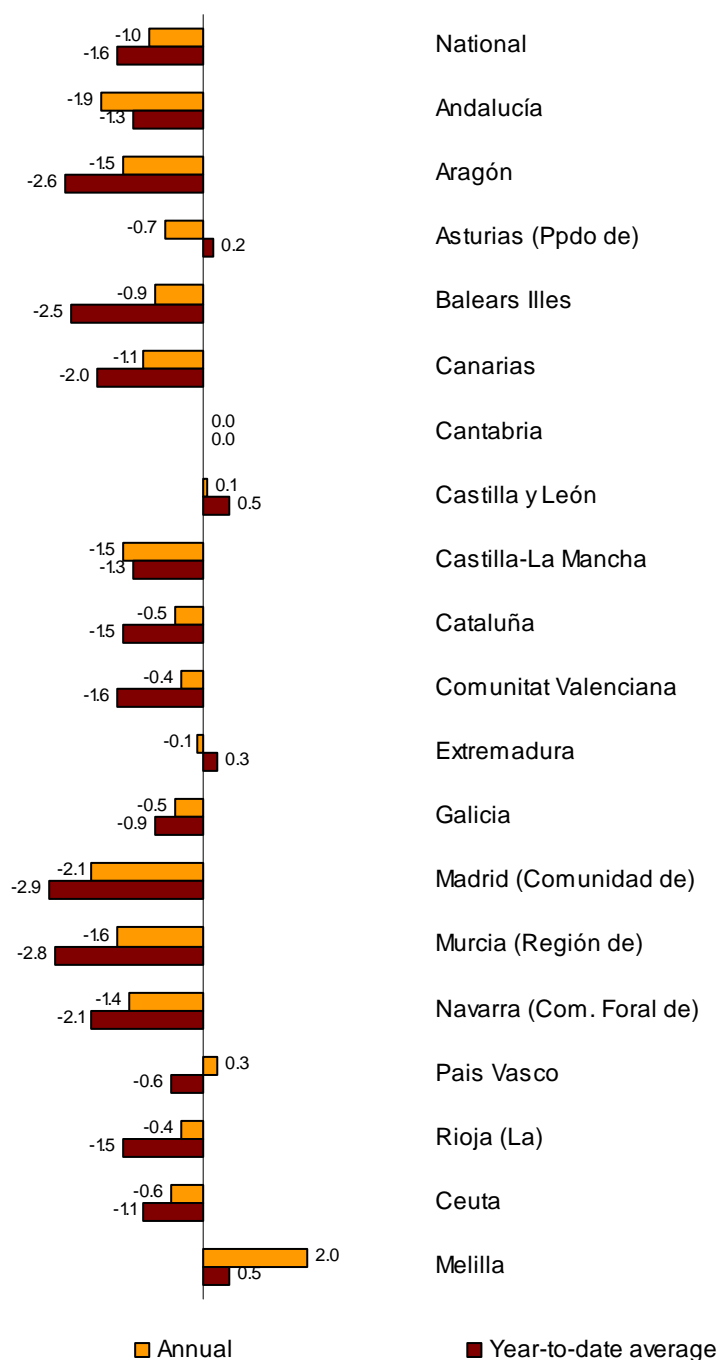


## Results by Autonomous Community. Employment variation rates

Employment in retail trade decreased in September, in all Autonomous Communities, except in País Vasco (0.3%) and Castilla y León (0.1%). Cantabria had the same level of employment (0.0%).

Comunidad de Madrid (-2.1%) and Andalucía (-1.9%) registered the greatest decreases.

**Annual and average rates of the employment index**  
**General index by Autonomous Community**



## Retail Trade Index. Base 2005

September 2010

Provisional data

### 1. National indices

|   | Index       | % variation |                      | Deflated index | % variation |                      |
|---|-------------|-------------|----------------------|----------------|-------------|----------------------|
|   |             | Annual      | Year-to-date average |                | Annual      | Year-to-date average |
| <b>General Retail Trade Index</b>         | <b>98.6</b> | <b>-0.4</b> | <b>0.8</b>           | <b>88.7</b>    | <b>-2.9</b> | <b>-1.3</b>          |
| 1. Service Station Index                  | 115.5       | 12.9        | 13.3                 | 94.6           | -0.3        | -3.8                 |
| 2. General Index without Service Stations | 97.3        | -1.5        | -0.2                 | 89.0           | -2.8        | -0.5                 |
| 2.1. Food products                        | 108.5       | 0.3         | 0.1                  | 93.8           | -0.9        | -0.2                 |
| 2.2. Non-food products                    | 90.4        | -2.8        | -0.3                 | 86.9           | -4.1        | -0.7                 |
| 2.2.1 Personal equipment                  | 94.2        | -2.3        | -0.3                 | 97.5           | -2.3        | 0.3                  |
| 2.2.2 Household equipment                 | 74.4        | -4.6        | 0.8                  | 67.4           | -5.3        | 0.3                  |
| 2.2.3 Other goods                         | 101.1       | -2.1        | -1.0                 | 97.1           | -3.4        | -1.4                 |

### 2. National Indices by distribution class

|   | Index       | % variation |                      | Deflated index | % variation |                      |
|---|-------------|-------------|----------------------|----------------|-------------|----------------------|
|   |             | Annual      | Year-to-date average |                | Annual      | Year-to-date average |
| <b>General Retail Trade Index</b>         | <b>98.6</b> | <b>-0.4</b> | <b>0.8</b>           | <b>88.7</b>    | <b>-2.9</b> | <b>-1.3</b>          |
| 1. Service Station Index                  | 115.5       | 12.9        | 13.3                 | 94.6           | -0.3        | -3.8                 |
| 2. General Index without Service Stations | 97.3        | -1.5        | -0.2                 | 89.0           | -2.8        | -0.5                 |
| 2.1. Single retail stores                 | 91.0        | -2.1        | -0.9                 | 83.3           | -3.3        | -1.3                 |
| 2.2. Small chain stores                   | 89.0        | -5.3        | -2.4                 | 81.4           | -6.5        | -2.8                 |
| 2.3. Large chain stores                   | 124.4       | 1.9         | 2.5                  | 113.8          | 0.6         | 2.2                  |
| 2.4. Department stores                    | 89.9        | -4.5        | -1.2                 | 82.3           | -5.8        | -1.6                 |

### 3. Department Store Indices

|                               | Index       | % variation |                      | Deflated index | % variation |                      |
|-------------------------------|-------------|-------------|----------------------|----------------|-------------|----------------------|
|                               |             | Annual      | Year-to-date average |                | Annual      | Year-to-date average |
| <b>Department Store Index</b> | <b>89.9</b> | <b>-4.5</b> | <b>-1.2</b>          | <b>82.3</b>    | <b>-5.8</b> | <b>-1.6</b>          |
| 1. Food products              | 90.2        | -5.5        | -5.2                 | 77.9           | -6.6        | -5.4                 |
| 2. Non-food products          | 89.8        | -4.1        | 0.8                  | 86.3           | -5.4        | 0.4                  |

#### 4. National Indices. Adjusted for calendar effect

|   | Index       | % variation |                      | Deflated index | % variation |                      |
|---|-------------|-------------|----------------------|----------------|-------------|----------------------|
|   |             | Annual      | Year-to-date average |                | Annual      | Year-to-date average |
| <b>General Retail Trade Index</b>         | <b>98.0</b> | <b>-0.4</b> | <b>0.7</b>           | <b>88.2</b>    | <b>-2.9</b> | <b>-1.5</b>          |
| 1. Service Station Index                  | 115.1       | 12.9        | 13.2                 | 94.1           | -0.3        | -3.9                 |
| 2. General Index without Service Stations | 96.7        | -1.5        | -0.3                 | 88.4           | -2.8        | -0.7                 |
| 2.1. Department Store Index               | 89.6        | -4.5        | -1.3                 | 82.0           | -5.8        | -1.7                 |

## 5. Annual rates of National indices

|                | General Retail Trade Index |                       |                 |                       | General Index without Service Stations |                       |                 |                       |
|----------------|----------------------------|-----------------------|-----------------|-----------------------|--|-----------------------|-----------------|-----------------------|
|                | Current Prices             |                       | Constant Prices |                       | Current Prices                         |                       | Constant Prices |                       |
|                | Original                   | Adjusted <sup>1</sup> | Original        | Adjusted <sup>1</sup> | Original                               | Adjusted <sup>1</sup> | Original        | Adjusted <sup>1</sup> |
| 2009 September | -6.1                       | -6.1                  | -3.8            | -3.8                  | -5.0                                   | -5.0                  | -3.8            | -3.8                  |
| October        | -6.0                       | -4.8                  | -4.3            | -3.2                  | -5.1                                   | -4.0                  | -3.9            | -2.8                  |
| November       | -4.7                       | -5.9                  | -4.8            | -5.9                  | -4.3                                   | -5.4                  | -3.5            | -4.7                  |
| December       | -0.3                       | -1.2                  | -1.2            | -2.2                  | -0.8                                   | -1.7                  | -0.1            | -1.1                  |
| 2010 January   | -3.0                       | -1.3                  | -4.5            | -2.8                  | -3.8                                   | -2.1                  | -3.2            | -1.4                  |
| February       | 0.3                        | 0.0                   | -0.9            | -1.2                  | -0.5                                   | -0.8                  | 0.2             | -0.1                  |
| 2010 January   | 5.8                        | 4.3                   | 3.6             | 2.2                   | 4.9                                    | 3.4                   | 5.3             | 3.8                   |
| April          | 0.1                        | 0.1                   | -2.4            | -2.4                  | -1.1                                   | -1.1                  | -1.2            | -1.2                  |
| May            | 1.2                        | 1.1                   | -1.6            | -1.7                  | -0.1                                   | -0.2                  | -0.6            | -0.7                  |
| June           | 3.2                        | 3.1                   | 1.0             | 0.9                   | 2.3                                    | 2.2                   | 1.5             | 1.4                   |
| July           | 0.2                        | 0.0                   | -2.2            | -2.4                  | -0.9                                   | -1.1                  | -2.0            | -2.2                  |
| August         | 0.7                        | -0.6                  | -1.3            | -2.7                  | 0.0                                    | -1.4                  | -1.2            | -2.6                  |
| September      | -0.4                       | -0.4                  | -2.9            | -2.9                  | -1.5                                   | -1.5                  | -2.8            | -2.8                  |

<sup>1</sup> Index rates adjusted for calendar effects



## 6. National Employment Indices by distribution class

|   | Index       | % variation on |             |                      |
|---|-------------|----------------|-------------|----------------------|
|   |             | Previous month | Same month  | Year-to-date average |
| <b>General Retail Trade Index</b>         | <b>98.1</b> | <b>-1.0</b>    | <b>-1.0</b> | <b>-1.6</b>          |
| 1. Service Station Index                  | 102.2       | -1.4           | -0.5        | -0.4                 |
| 2. General Index without Service Stations | 97.9        | -1.0           | -1.0        | -1.6                 |
| 2.1. Single retail stores                 | 97.2        | -0.3           | 0.0         | -1.0                 |
| 2.2. Small chain stores                   | 91.4        | -1.9           | -3.9        | -3.6                 |
| 2.3. Large chain stores                   | 111.7       | -0.9           | 0.1         | -1.1                 |
| 2.4. Department stores                    | 95.6        | -3.6           | -1.3        | -2.0                 |

## 7. General Retail Trade Indices of Autonomous Communities

|                              | Index       | % variation |                      | Deflated index | % variation |                      |
|------------------------------|-------------|-------------|----------------------|----------------|-------------|----------------------|
|                              |             | Annual      | Year-to-date average |                | Annual      | Year-to-date average |
| <b>National total</b>        | <b>98.6</b> | <b>-0.4</b> | <b>0.8</b>           | <b>88.7</b>    | <b>-2.9</b> | <b>-1.3</b>          |
| Andalucía                    | 96.1        | -2.2        | -1.7                 | 86.4           | -4.7        | -3.7                 |
| Aragón                       | 98.4        | -2.7        | -0.3                 | 88.4           | -5.1        | -2.4                 |
| Asturias (Principado de)     | 103.8       | -1.7        | 0.7                  | 94.4           | -4.4        | -1.4                 |
| Balears (Illes)              | 103.4       | -1.5        | -1.9                 | 93.4           | -3.6        | -3.9                 |
| Canarias                     | 90.9        | -2.2        | -2.2                 | 83.6           | -3.6        | -3.4                 |
| Cantabria                    | 105.8       | 1.7         | 2.2                  | 94.6           | -0.8        | -0.1                 |
| Castilla y León              | 106.0       | 2.6         | 3.5                  | 94.7           | 0.0         | 1.1                  |
| Castilla-La Mancha           | 98.7        | -1.8        | 0.8                  | 89.1           | -4.6        | -1.5                 |
| Cataluña                     | 98.6        | 1.7         | 3.1                  | 88.0           | -1.2        | 0.6                  |
| Comunitat Valenciana         | 93.8        | -0.7        | -0.3                 | 84.7           | -2.9        | -2.2                 |
| Extremadura                  | 105.6       | -0.2        | 1.3                  | 95.2           | -2.4        | -0.7                 |
| Galicia                      | 106.1       | 1.2         | 2.3                  | 95.9           | -1.2        | 0.2                  |
| Madrid (Comunidad de)        | 98.7        | -0.6        | 2.6                  | 89.1           | -3.2        | 0.3                  |
| Murcia (Región de)           | 97.5        | -2.4        | -0.5                 | 87.2           | -4.8        | -2.8                 |
| Navarra (Comunidad Foral de) | 106.2       | 0.7         | 1.3                  | 96.2           | -1.9        | -1.0                 |
| País Vasco                   | 100.2       | -0.6        | -0.5                 | 89.7           | -2.7        | -2.4                 |
| Rioja (La)                   | 93.7        | 0.7         | -0.1                 | 84.6           | -1.9        | -2.1                 |
| Ceuta                        | 104.0       | 0.2         | -3.2                 | 93.5           | -1.2        | -5.1                 |
| Melilla                      | 110.9       | 1.9         | 0.8                  | 98.3           | -0.2        | -1.9                 |

## 8. General Indices without Service Stations, by Autonomous Community

|                              | Index       | % variation |                      | Deflated index | % variation |                      |
|------------------------------|-------------|-------------|----------------------|----------------|-------------|----------------------|
|                              |             | Annual      | Year-to-date average |                | Annual      | Year-to-date average |
| <b>National total</b>        | <b>97.3</b> | <b>-1.5</b> | <b>-0.2</b>          | <b>89.0</b>    | <b>-2.8</b> | <b>-0.5</b>          |
| Andalucía                    | 96.2        | -2.7        | -1.9                 | 88.2           | -3.8        | -2.1                 |
| Aragón                       | 98.6        | -3.0        | -0.4                 | 89.9           | -4.4        | -1.0                 |
| Asturias (Principado de)     | 103.5       | -2.2        | -0.1                 | 95.7           | -3.8        | -0.5                 |
| Balears (Illes)              | 103.5       | -1.6        | -2.0                 | 95.1           | -2.5        | -2.2                 |
| Canarias                     | 89.7        | -2.7        | -3.0                 | 84.5           | -2.5        | -1.9                 |
| Cantabria                    | 104.4       | 1.3         | 1.6                  | 94.9           | 0.1         | 1.3                  |
| Castilla y León              | 104.4       | 1.5         | 2.5                  | 94.7           | 0.0         | 1.8                  |
|                              | 98.8        | -3.1        | 0.0                  | 90.8           | -4.9        | -0.6                 |
| Cataluña                     | 98.1        | 0.6         | 2.2                  | 88.8           | -1.1        | 1.5                  |
| Comunitat Valenciana         | 93.0        | -1.5        | -0.9                 | 85.5           | -2.5        | -1.1                 |
| Extremadura                  | 102.7       | -1.0        | 0.5                  | 94.0           | -2.2        | 0.0                  |
| Galicia                      | 104.5       | 0.5         | 1.5                  | 96.2           | -0.8        | 1.3                  |
| Madrid (Comunidad de)        | 93.5        | -3.6        | -0.5                 | 85.8           | -4.9        | -0.9                 |
| Murcia (Región de)           | 97.8        | -2.9        | -0.5                 | 88.8           | -4.1        | -0.9                 |
| Navarra (Comunidad Foral de) | 104.6       | -0.2        | -0.1                 | 96.2           | -1.7        | -0.8                 |
| País Vasco                   | 98.8        | -1.3        | -1.0                 | 89.6           | -2.4        | -1.3                 |
| Rioja (La)                   | 93.9        | 0.3         | -0.5                 | 86.1           | -1.2        | -0.9                 |
| Ceuta                        | 106.4       | 0.8         | -2.2                 | 98.0           | 0.2         | -2.1                 |
| Melilla                      | 109.1       | 0.6         | 0.3                  | 98.9           | -0.6        | -0.6                 |

## 9. General Employment Indices of Autonomous Communities

|                              | Index       | % variation on |                          |                      |
|------------------------------|-------------|----------------|--------------------------|----------------------|
|                              |             | Previous month | Same month previous year | Year-to-date average |
| <b>National total</b>        | <b>98.1</b> | <b>-1.0</b>    | <b>-1.0</b>              | <b>-1.6</b>          |
| Andalucía                    | 95.6        | -0.6           | -1.9                     | -1.3                 |
| Aragón                       | 97.0        | -0.7           | -1.5                     | -2.6                 |
| Asturias (Principado de)     | 103.4       | -0.9           | -0.7                     | 0.2                  |
| Balears (Illes)              | 98.5        | -2.2           | -0.9                     | -2.5                 |
| Canarias                     | 93.8        | -0.8           | -1.1                     | -2.0                 |
| Cantabria                    | 103.9       | -1.0           | 0.0                      | 0.0                  |
| Castilla y León              | 104.4       | -1.0           | 0.1                      | 0.5                  |
| Castilla-La Mancha           | 98.2        | -0.6           | -1.5                     | -1.3                 |
| Cataluña                     | 97.3        | -1.6           | -0.5                     | -1.5                 |
| Comunitat Valenciana         | 96.8        | -1.3           | -0.4                     | -1.6                 |
| Extremadura                  | 101.0       | -0.7           | -0.1                     | 0.3                  |
| Galicia                      | 102.6       | -1.1           | -0.5                     | -0.9                 |
| Madrid (Comunidad de)        | 97.8        | -0.6           | -2.1                     | -2.9                 |
| Murcia (Región de)           | 101.0       | -1.7           | -1.6                     | -2.8                 |
| Navarra (Comunidad Foral de) | 99.6        | -0.4           | -1.4                     | -2.1                 |
| País Vasco                   | 100.5       | -0.8           | 0.3                      | -0.6                 |
| Rioja (La)                   | 97.9        | -0.5           | -0.4                     | -1.5                 |
| Ceuta                        | 101.6       | -1.1           | -0.6                     | -1.1                 |
| Melilla                      | 102.2       | -1.1           | 2.0                      | 0.5                  |

## 10. General Employment Indices without Service Stations, by Autonomous Community

|                              | Index       | % variation on |                          |                      |
|------------------------------|-------------|----------------|--------------------------|----------------------|
|                              |             | Previous month | Same month previous year | Year-to-date average |
| <b>National total</b>        | <b>97.9</b> | <b>-1.0</b>    | <b>-1.0</b>              | <b>-1.6</b>          |
| Andalucía                    | 95.6        | -0.6           | -1.9                     | -1.3                 |
| Aragón                       | 97.0        | -0.7           | -1.5                     | -2.6                 |
| Asturias (Principado de)     | 103.8       | -0.9           | -0.8                     | 0.1                  |
| Balears (Illes)              | 98.5        | -2.3           | -0.9                     | -2.5                 |
| Canarias                     | 93.0        | -0.8           | -1.2                     | -2.2                 |
| Cantabria                    | 103.5       | -1.1           | -0.2                     | -0.1                 |
| Castilla y León              | 104.5       | -1.1           | -0.1                     | 0.6                  |
| Castilla-La Mancha           | 98.3        | -0.6           | -1.6                     | -1.4                 |
| Cataluña                     | 97.2        | -1.6           | -0.4                     | -1.6                 |
| Comunitat Valenciana         | 96.6        | -1.3           | -0.6                     | -1.7                 |
| Extremadura                  | 101.3       | -0.7           | -0.1                     | 0.4                  |
| Galicia                      | 102.7       | -1.1           | -0.6                     | -1.0                 |
| Madrid (Comunidad de)        | 97.5        | -0.6           | -2.0                     | -3.0                 |
| Murcia (Región de)           | 101.1       | -1.7           | -1.8                     | -2.8                 |
| Navarra (Comunidad Foral de) | 99.3        | -0.4           | -1.4                     | -2.3                 |
| País Vasco                   | 100.3       | -0.8           | 0.3                      | -0.6                 |
| Rioja (La)                   | 97.7        | -0.5           | -0.4                     | -1.4                 |
| Ceuta                        | 101.7       | -1.1           | -0.4                     | -1.2                 |
| Melilla                      | 102.3       | -1.1           | 2.1                      | 0.5                  |

For further information see INEbase - [www.ine.es/en/welcome\\_en.htm](http://www.ine.es/en/welcome_en.htm) All press releases at: [www.ine.es/en/prensa/prensa\\_en.htm](http://www.ine.es/en/prensa/prensa_en.htm)

**Press Office:** Telephone numbers: 91 583 93 63 / 94 08

Fax: 91 583 90 87 - [gprensa@ine.es](mailto:gprensa@ine.es)

**Information Area:** Telephone number: 91 583 91 00

Fax: 91 583 91 58 - [www.ine.es/infoine](http://www.ine.es/infoine)