

27 December 2007

**Retail Trade Indices. Base 2005**  
**November 2007. Provisional data**

**Retail trade at constant prices grows 0.2% in November, as compared to the same month in 2006**

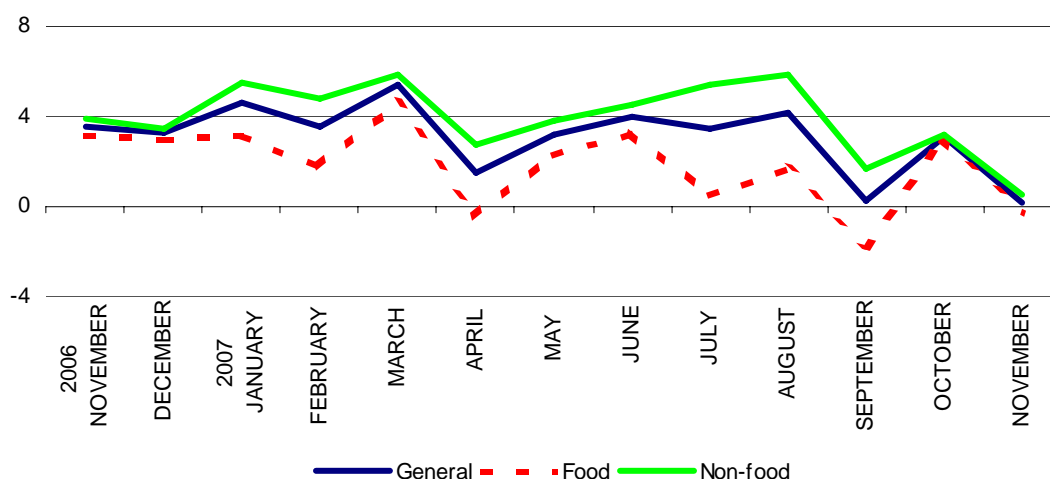
The general retail trade index in constant terms (in other words, after eliminating the price effect) registered a 0.2% interannual increase in the month of November. Foodstuffs decreased -0.3%, whilst non-food products grew 0.5%. A breakdown of the latter by type of product shows annual growth amounting to 4.1% for *Personal Goods*, -4.8% in *Furniture and household equipment* and 3.4% in *Other goods*.

Since the number of working days this month coincides with November last year, there is no adjustment for calendar effect.

**National indices: general and groups**

	Index	% variation Same month previous year	Deflated Index	% variation Same month previous year
<b>General Index</b>	<b>109.6</b>	<b>4.4</b>	<b>100.8</b>	<b>0.2</b>
1. Food stuffs	110.0	6.0	98.8	-0.3
2. Non-food products	109.3	3.4	102.1	0.5
2.1 Personal goods	110.5	5.3	99.8	4.1
2.2 Furniture household equipment	108.0	-2.5	101.7	-4.8
2.3 Other goods	109.3	6.4	102.1	3.4
<b>General Index: Calendar effects corrected</b>	<b>110.4</b>	<b>4.4</b>	<b>101.5</b>	<b>0.2</b>

**Annual rates (constant prices)**



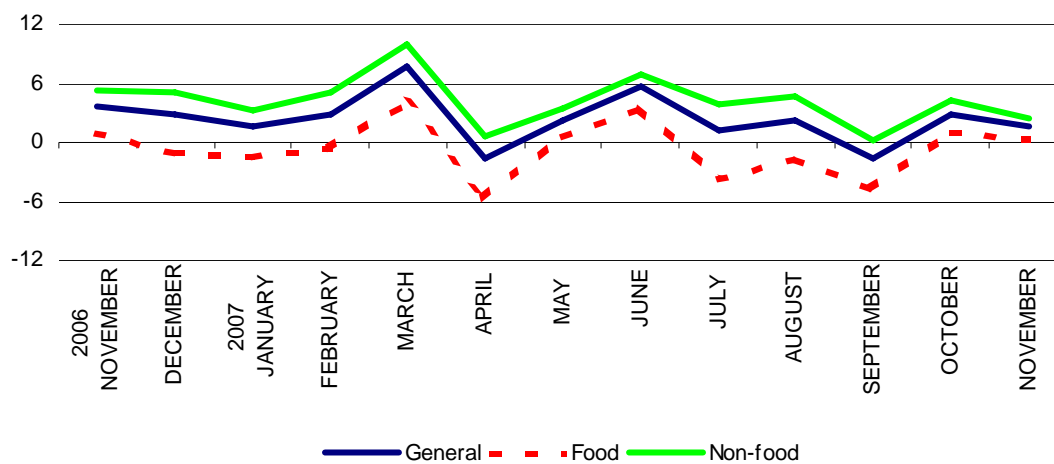
## Sales in department stores present a 1.6% increase of the interannual rate in constant terms

The general index for department stores, which analyses the evolution of sales in premises that spread out over more than 2,500 square metres, showed a 1.6% interannual increase at constant prices in November. Foodstuffs recorded a variation of 0.5%, whereas non-foodstuff products recorded 2.4%.

### Department Stores index: general and by groups

	Index	% variation Same month previous year	Deflated Index	% variation Same month previous year
<b>General Index</b>	<b>108.9</b>	<b>5.9</b>	<b>100.2</b>	<b>1.6</b>
1. Food stuffs	107.0	6.8	96.1	0.5
2. Non-food products	109.8	5.4	102.6	2.4
<b>General Index: Calendar effects corrected</b>	<b>109.4</b>	<b>5.9</b>	<b>100.6</b>	<b>1.6</b>

### Department Store annual rates (constant prices)



## Extremadura is the Autonomous Community with a greater interannual increase in sales

By Autonomous Communities, the highest interannual increases in constant terms of the Retail Trade Index in the month of November corresponded to Extremadura (3.1%), Castilla-La Mancha (2.8%) and Illes Balears (2.1%).

Conversely, Región de Murcia (-2.0%) and Andalucía (-1.3%) are the Autonomous Communities with the greatest interannual decreases.

## Indices by Autonomous Community

	Index	% variation Same month previous year	Deflated Index	% variation Same month previous year
<b>National total</b>	109.6	4.4	100.8	0.2
Andalucía	109.4	2.9	100.7	-1.3
Aragón	111.1	5.6	101.8	1.3
Asturias (Principado de)	109.0	5.0	100.3	1.0
Balears (Illes)	96.6	6.0	89.4	2.1
Canarias	110.9	4.7	103.2	0.2
Cantabria	105.4	3.1	96.3	-1.1
Castilla y León	107.5	4.7	98.1	0.1
Castilla-La Mancha	116.3	7.5	106.5	2.8
Cataluña	107.6	3.5	99.0	-0.6
Comunitat Valenciana	106.1	4.2	97.9	-0.1
Extremadura	110.5	7.5	101.8	3.1
Galicia	107.6	4.6	98.8	0.4
Madrid (Comunidad de)	115.9	5.2	107.2	1.2
Murcia (Región de)	111.6	3.1	101.6	-2.0
Navarra (Comunidad Foral de)	109.8	4.5	101.1	0.3
País Vasco	110.5	5.5	101.3	1.1
Rioja (La)	111.2	4.9	101.3	0.7
Ceuta	113.2	5.4	104.6	2.6
Melilla	113.5	1.8	103.6	-2.2

## Employment in the retail sector increases 1.6% in November

The employment index (showing the evolution of employment, both for employees and self-employed workers) yielded a 1.6% interannual growth for the whole of the sector, during November. In department stores as a whole employment has increased 4.6%.

## National Employment Indices

	Index	% variation among	
		Previous month	Same month previous year
<b>General index</b>	104.3	0.5	1.6
Department stores	110.4	3.8	4.6

## Castilla y León yields the greatest employment rate increase with regard to the same month from the previous year

On an Autonomous Community basis, the greatest interannual employment increases have been accounted for in Castilla y León (3.3%) and in Aragón, Asturias and Castilla-La Mancha (2.7% in each one).

Cataluña (0.4%) and País Vasco (0.6%) are the Autonomous Communities showing the lowest annual employment rate increases.

### Employment Indices by Autonomous Community

	Index	% variation on	
		Previous month	Same month previous year
<b>National total</b>	104.3	0.5	1.6
Andalucía	102.9	0.4	2.0
Aragón	105.8	0.3	2.7
Asturias (Principado de)	104.8	0.4	2.7
Balears (Illes)	101.6	-3.4	2.5
Canarias	104.2	1.2	0.9
Cantabria	108.5	0.3	0.7
Castilla y León	105.0	0.0	3.3
Castilla-La Mancha	106.5	1.0	2.7
Cataluña	101.8	0.2	0.4
Comunitat Valenciana	103.6	0.9	1.8
Extremadura	104.4	0.2	2.2
Galicia	105.5	0.5	1.8
Madrid (Comunidad de)	107.1	1.3	1.6
Murcia (Región de)	111.3	-0.2	2.6
Navarra (Comunidad Foral de)	105.9	0.4	2.1
País Vasco	103.4	0.5	0.6
Rioja (La)	102.6	0.1	1.7
Ceuta	104.3	-0.6	2.8
Melilla	101.5	-1.9	-1.6

For further information see **INEbase-[www.ine.es](http://www.ine.es)** All press releases at: **[www.ine.es/prensa/prensa.htm](http://www.ine.es/prensa/prensa.htm)**

**Press office:** Telephone numbers: 91 583 93 63 / 94 08 – Fax: 91 583 90 87 - **[gprensa@ine.es](mailto:gprensa@ine.es)**

**Information area:** Telephone: 91 583 91 00 – Fax: 91 583 91 58 – **[www.ine.es/infoine](http://www.ine.es/infoine)**