

8 March 2022

Industrial Production Indices (IPI). Base 2015
January 2022. Provisional data

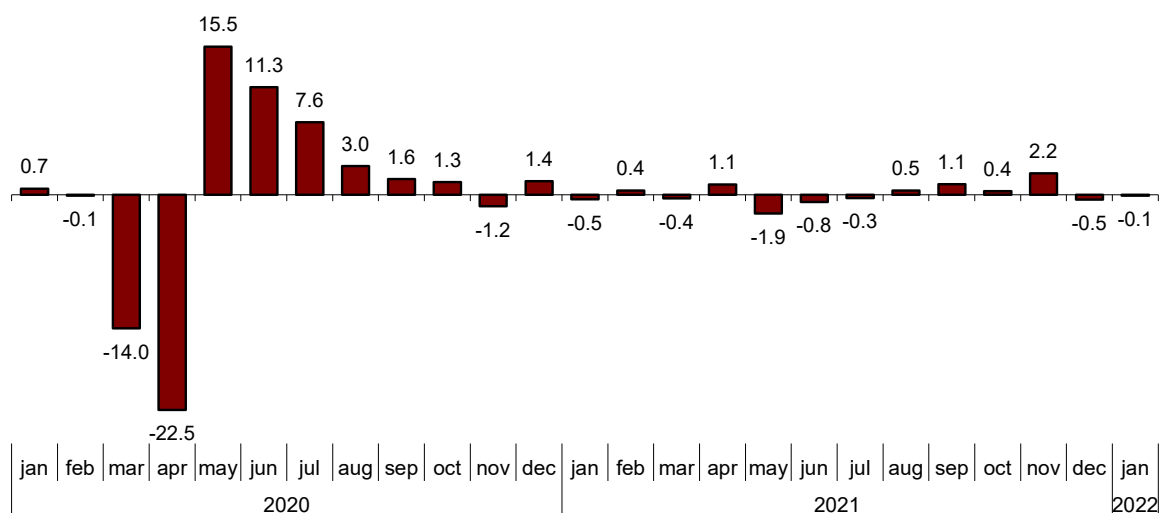
After adjusting for seasonal and calendar effects, the monthly variation of the Industrial Production Index stood at -0.1%

The annual rate of the Industrial Production Index stands at 1.7% in the series adjusted for seasonal and calendar effects and at 4.0% in the original series

Monthly evolution of industrial production

The monthly variation of the Industrial Production Index (IPI) between the months of January and December, after adjusting for seasonal and calendar effects, was -0.1%. This rate is 0.4 points higher than that observed in December.

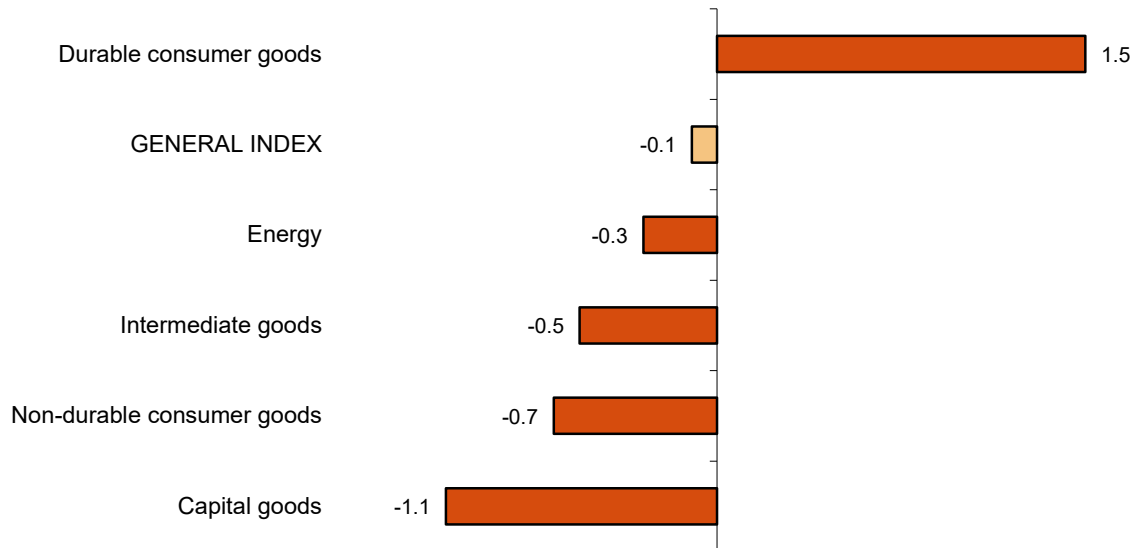
General Industrial Production Index



Four of the five sectors showed negative monthly rates. It is worth highlighting the decrease in *Capital goods* (-1.1%) followed by *Non-durable consumer goods* (-0.7%). The only sector that increased was *Durable consumer goods* (1.5%).

Industrial Production Indices: General and by economic destination

Adjusted for seasonal and calendar effects January 2022. Monthly rate (percentage)



A more detailed analysis shows the branches of activity with the greatest and lowest monthly rates in January.

Branches of activity with the highest monthly rates of the industrial production index adjusted for seasonal and calendar effects

Activity (Division from CNAE 2009)	Monthly rate (%)
Textile industry	10.1
Manufacture of other transport equipment	9.9
Manufacture of wood and of products of wood and cork, except furniture;	7.5

Branches of activity with the lowest monthly rates of the industrial production index adjusted for seasonal and calendar effects

Activity (Division from CNAE 2009)	Monthly rate (%)
Other mining and quarrying	-29.6
Leather and footwear industry	-15.8
Tobacco industry	-6.3

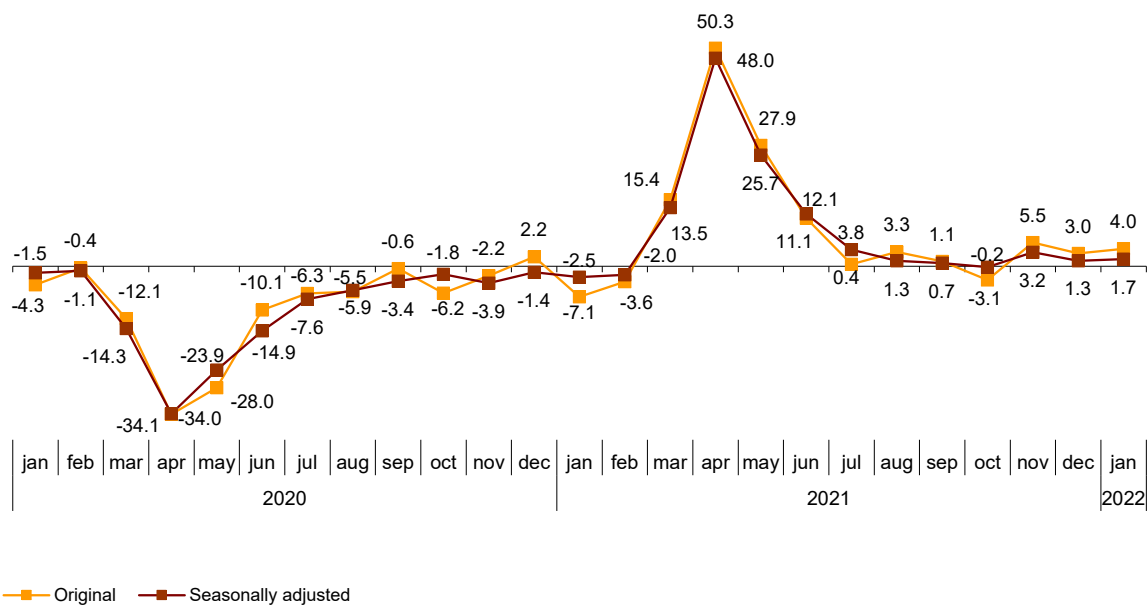
Annual evolution of industrial production

The Industrial Production Index, adjusted for seasonal and calendar effects, recorded a variation rate of 1.7% in January, as compared to the same month of the previous year. This rate is 0.4 points higher than that registered in December.

The original IPI series experienced an annual variation of 4.0%. This rate is 1.0 points higher than that of December.

General Industrial Production Index

Annual rate (percentage)



Four of the five sectors showed positive annual rates. It is worth highlighting the increase in *Durable consumer goods* (6.7%) followed by *Non-durable consumer goods* (4.3%). The only sector that increased was *Capital goods* (-1.3%).

Annual rates of industrial production indices: General and by economic destination of the goods

	Original index Annual rate (%)	Seasonally adjusted index Annual rate (%)
General Index	4.0	1.7
Consumer goods	8.5	5.0
- Durable consumer goods	11.4	6.7
- Non-durable consumer goods	8.3	4.3
Capital goods	2.3	-1.3
Intermediate goods	3.9	1.6
Energy	1.1	0.2

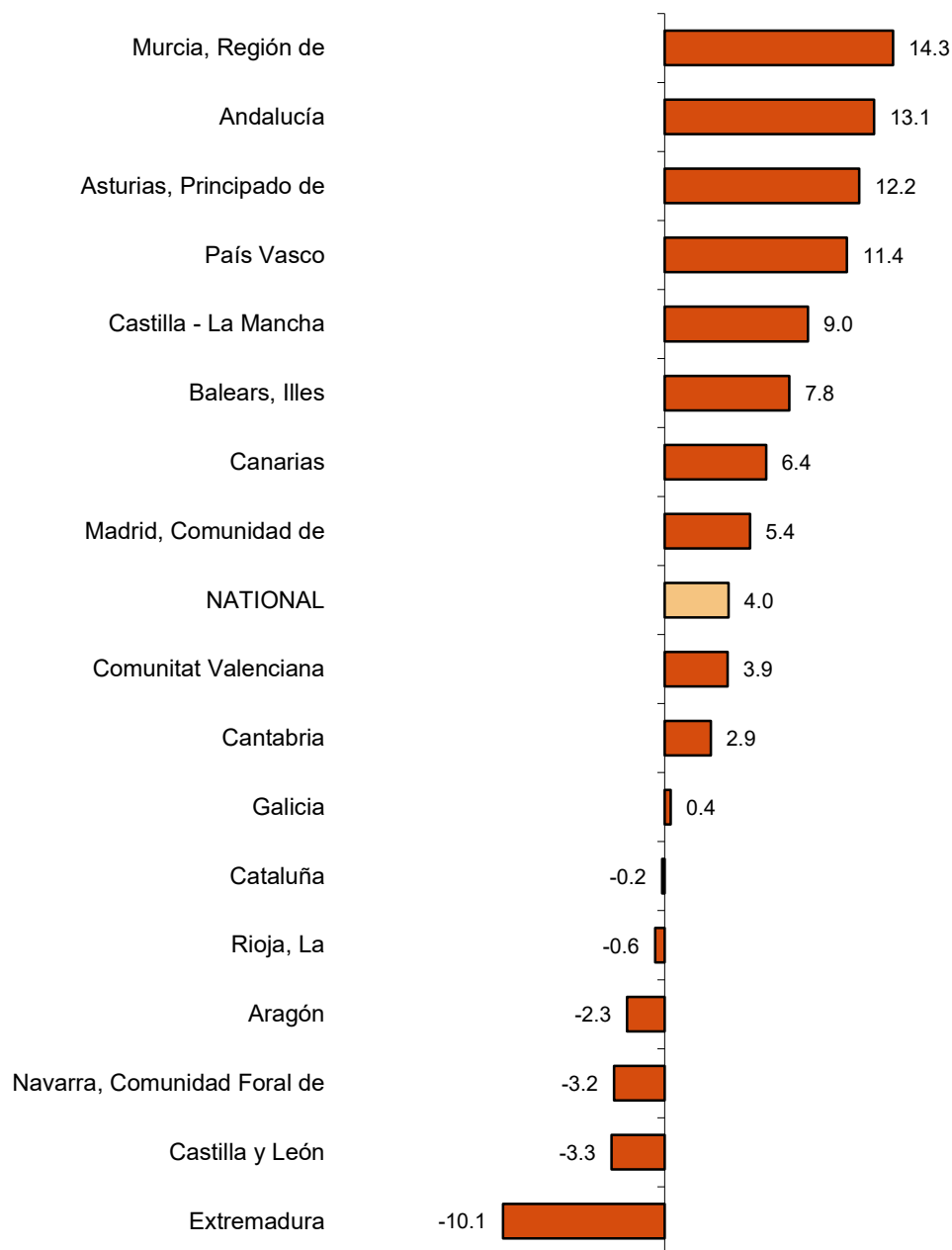
Results by Autonomous Communities. Annual variation rates of industrial production. Original series

The annual rate of industrial production increased as compared to January 2021 in 11 Autonomous Communities and decreased in the other six.

The largest increases were recorded in Región de Murcia (14.3%), Andalucía (13.1%) and Principado de Asturias (12.2%). The largest decreases were recorded in Extremadura (-10.1%), Castilla y León (-3.3%) and Comunidad Foral de Navarra (-3.2%).

General indices: national and by Autonomous Communities

January 2022. Annual rate (percentage)



Data Review and Update

Coinciding with today's publication, the INE has updated the data of the IPI series corresponding to the last two months. In the case of the series adjusted for calendar effects and for seasonal and calendar effects, the series is revised from the beginning, following the INE standard. The results are available at INEBase.

Methodological note

The Industrial Production Index (IPI) is a short-term indicator that measures the monthly evolution of the productive activity of the industrial branches, excluding construction, contained in the National Classification of Economic Activities 2009 (CNAE-2009). It therefore investigates the activities included in sections B, C, D and division 36: Water collection, treatment and supply, from section E of the CNAE-2009.

The IPI measures the joint evolution of quantity and quality, eliminating the influence of prices.

Type of survey: monthly continuous survey.

Base year: 2015.

Population scope: industrial establishments whose main activity is included in sections B, C, D and division 36 of the CNAE-2009.

Geographical scope: the entire national territory.

Sample size: 11,500 industrial establishments and more than 1,100 products.

Collection method: completion of the questionnaire by the respondent using one of the following methods: internet (IRIA system), e-mail, fax, telephone or by postal mail.

For more information the methodology can be accessed at:

https://www.ine.es/en/daco/daco43/metoipi15_en.pdf

And the standardised methodological report at:

<https://www.ine.es/dynt3/metadatos/en/RespuestaDatos.html?oe=30050>

INE statistics are produced in accordance with the Code of Good Practice for European Statistics, which is the basis for the institution's quality policy and strategy. For more information see the section on [Quality at INE and the Code of Best Practices](#) on the INE website.

For further information see **INEbase:** www.ine.es/en/ Twitter: [@es_ine](https://twitter.com/es_ine)

All press releases at: www.ine.es/en/prensa/prensa_en.htm

Press Office: Telephone numbers: (+34) 91 583 93 63 /94 08 – gprensa@ine.es

Information Area: Telephone number: (+34) 91 583 91 00 – www.ine.es/infoine/?L=1

Industrial Production Indices. Base 2015

January 2022

Provisional Data

1. Industrial Production Indices: General and by economic destination adjusted for seasonal and calendar effects

	Index	Rate (%)		
		Monthly	Annual	Year-to-date average
General Index	104.7	-0.1	1.7	1.7
Consumer goods	103.7	-1.3	5.0	5.0
- Durable consumer goods	108.5	1.5	6.7	6.7
- Non-durable consumer goods	102.6	-0.7	4.3	4.3
Capital goods	103.2	-1.1	-1.3	-1.3
Intermediate goods	108.8	-0.5	1.6	1.6
Energy	97.0	-0.3	0.2	0.2

2. Industrial Production Indices: General and by economic destination adjusted for seasonal and calendar effects

	Index	Rate (%)	
		Annual	Year-to-date average
General Index	101.3	1.3	1.3
Consumer goods	98.4	5.0	5.0
- Durable consumer goods	95.6	6.8	6.8
- Non-durable consumer goods	98.8	4.2	4.2
Capital goods	95.9	-0.9	-0.9
Intermediate goods	104.9	1.3	1.3
Energy	105.0	0.3	0.3

3. Industrial Production Indices: General and by economic destination. Original series

	Index	Rate (%)		Repercussion Annual
		Annual	Year-to-date average	
General Index	99.5	4.0	4.0	
Consumer goods	96.2	8.5	8.5	2.045
- Durable consumer goods	93.0	11.4	11.4	0.200
- Non-durable consumer goods	96.5	8.3	8.3	1.845
Capital goods	93.8	2.3	2.3	0.490
Intermediate goods	103.1	3.9	3.9	1.223
Energy	104.5	1.1	1.1	0.251

4. Industrial Production Indices: General and by branches of activity (CNAE 2009). Original series

	Index	Rate (%)		Repercussion Annual
		Annual	Year-to-date average	
General Index	99.5	4.0	4.0	
B. Mining and quarrying industries	76.2	23.7	23.7	0.106
Extraction of anthracite, coal and lignite
National crude petroleum and natural gas
Extraction of metallic ores
Other mining and quarrying	90.1	25.9	25.9	0.110
C. Manufacturing industry	98.4	5.2	5.2	4.100
Food Industry	103.8	7.6	7.6	0.913
Manufacture of beverages.	83.2	13.3	13.3	0.335
Tobacco industry.
Textile industry	98.0	11.4	11.4	0.113
Manufacture of garments	105.7	34.8	34.8	0.264
Leather and footwear industry	67.9	2.5	2.5	0.017
Manufacture of wood and of products of wood and cork, except furniture; basketmaking and wickerwork	123.3	29.7	29.7	0.367
Manufacture of paper and paper-products	101.4	2.8	2.8	0.072
Graphic arts and reproduction of recorded media	64.3	9.9	9.9	0.099
Manufacture of coke and refined petroleum products	103.6	21.1	21.1	0.450
Chemical Industry	113.0	8.4	8.4	0.567
Manufacture of pharmaceutical products	101.7	-3.0	-3.0	-0.118
Rubber and plastic material transformation industry	111.0	0.9	0.9	0.047
Manufacture of other non-metallic ore products	100.2	4.8	4.8	0.177
Metallurgy; manufacture of iron, steel and ferro-alloy products	94.2	-0.2	-0.2	-0.008
Manufacture of metal products, except machinery and equipment	96.6	4.9	4.9	0.370
Manufacture of computers, electronic and optical products	109.7	17.0	17.0	0.175
Manufacture of electrical material and equipment	94.9	-0.1	-0.1	-0.004
Manufacture of machinery and equipment n.e.c.	102.0	9.9	9.9	0.443
Manufacture of motor vehicles, trailers and semi-trailers	85.7	-10.1	-10.1	-0.819
Manufacture of other transport equipment	81.1	14.5	14.5	0.293
Manufacture of furniture.	95.0	16.0	16.0	0.174
Other manufacturing industries	103.2	11.9	11.9	0.126
Repair and installation of machinery and equipment	104.8	2.4	2.4	0.070
D. Supply of electrical energy, gas, steam and air conditioning	108.1	-0.9	-0.9	-0.173
E. Water supply, activities, waste management and decontamination*	86.7	-1.0	-1.0	-0.025

* It only includes Water collection, treatment and supply

(..) Data not available due to statistical secrecy.

5. Industrial production indices: national and by Autonomous Community. Original series

	Index	Rate (%)	
		Annual	Year-to-date average
National	99.5	4.0	4.0
Andalucía	99.2	13.1	13.1
Aragón	98.0	-2.3	-2.3
Asturias, Principado de	108.4	12.2	12.2
Balears, Illes	78.5	7.8	7.8
Canarias	88.8	6.4	6.4
Cantabria	108.1	2.9	2.9
Castilla y León	88.7	-3.3	-3.3
Castilla-La Mancha	96.7	9.0	9.0
Cataluña	97.2	-0.2	-0.2
Comunitat Valenciana	101.8	3.9	3.9
Extremadura	88.1	-10.1	-10.1
Galicia	101.7	0.4	0.4
Madrid, Comunidad de	103.5	5.4	5.4
Murcia, Región de	115.4	14.3	14.3
Navarra, Comunidad Foral de	98.0	-3.2	-3.2
País Vasco	103.9	11.4	11.4
Rioja, La	84.5	-0.6	-0.6

More detailed information by Autonomous Community may be obtained at:

Andalucía	www.juntadeandalucia.es/institutodeestadisticaycartografia
Aragón	www.aragon.es/iaest/ipi
Principado de Asturias	www.sadei.es
Illes Balears	www.ibestat.caib.es
Canarias	www.gobiernodecanarias.org/istac
Cantabria	www.icane.es
Castilla y León	www.jcyl.es/estadistica
Castilla - La Mancha	www.jccm.es/estadistica
Cataluña	www.idescat.cat
Comunitat Valenciana	www.ive.es
Extremadura	http://estadistica.juntaex.es
Galicia	www.ige.xunta.es
Comunidad de Madrid	www.madrid.org/iestadis
Región de Murcia	http://econet.carm.es
La Rioja	www.larioja.org