

**Industrial Production Indices (IPI). Base 2015**  
February 2022. Provisional Data

**The monthly variation of the Industrial Production Index is 0.9% after adjusting for seasonal and calendar effects**

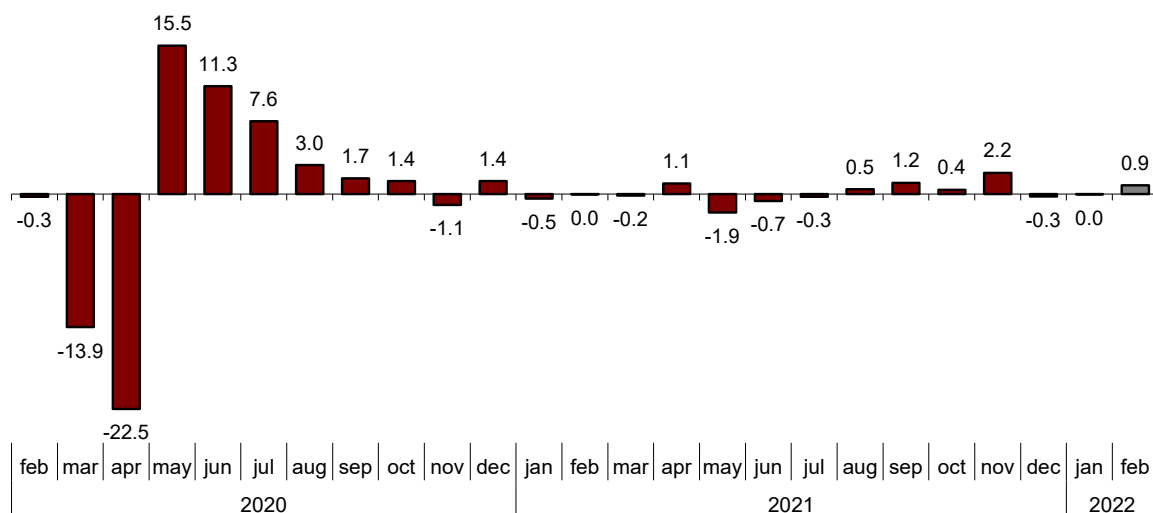
**The annual rate of the Industrial Production Index stands at 3.0% in the series adjusted for seasonal and calendar effects and at 3.9% in the original series**

**Monthly evolution of industrial production**

The monthly variation of the Industrial Production Index (IPI) between the months of February and January, after adjusting for seasonal and calendar effects, was 0.9%. This rate is 0.9 points higher than that observed in January.

**General Industrial Production Index**

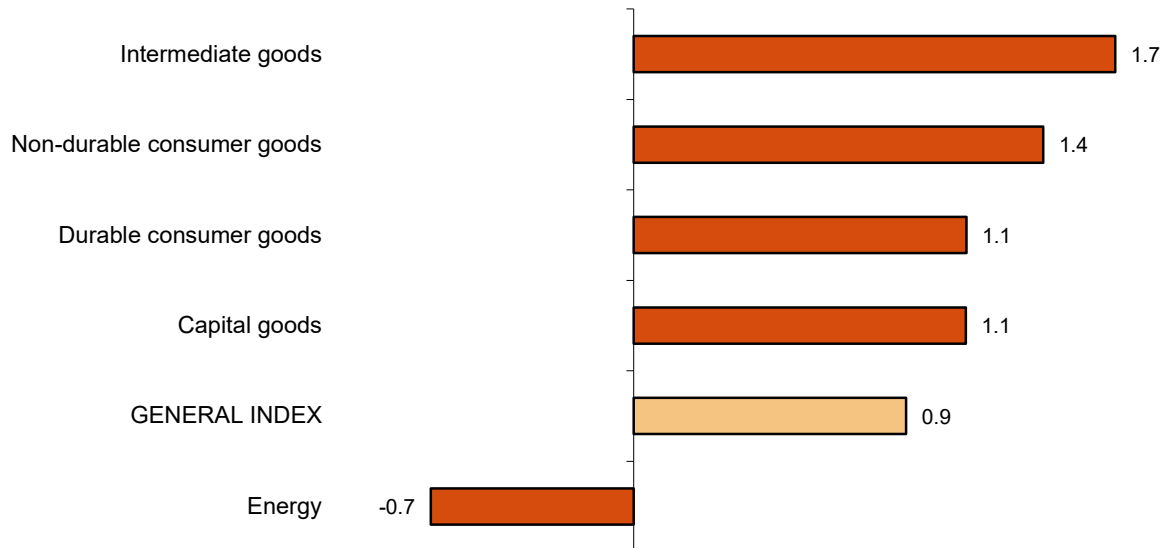
Adjusted for seasonal and calendar effects. Monthly rate (percentage)



Four of the five sectors showed positive monthly rates. It is worth highlighting the increase in *Intermediate goods* (1.7%) followed by *Non-durable consumer goods* (1.4%). The only sector that decreased was *Energy* (-0.7%).

**Industrial Production Indices: General and by economic destination**

Adjusted for seasonal and calendar effects. February 2022. Monthly rate (percentage)



A more detailed analysis shows the branches of activity with the greatest and lowest monthly rates in February.

**Branches of activity with the highest monthly rates of the industrial production index adjusted for seasonal and calendar effects**

Activity (Division from CNAE 2009)	Monthly rate (%)
Leather and footwear industry	15.2
Manufacture of pharmaceutical products	12.5
Manufacture of garments	6.4

**Branches of activity with the lowest monthly rates of the industrial production index adjusted for seasonal and calendar effects**

Activity (Division from CNAE 2009)	Monthly rate (%)
Extraction of anthracite, coal and lignite	-8.7
Other mining and quarrying	-5.7
Manufacture of motor vehicles, trailers and semi-trailers	-3.5

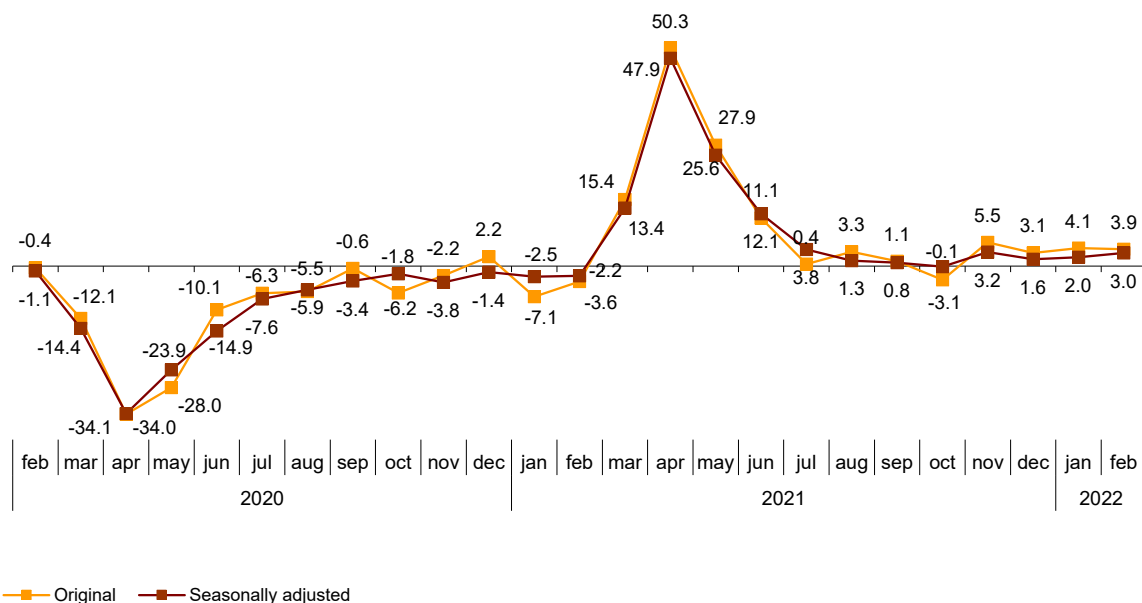
### Annual evolution of industrial production

The Industrial Production Index, adjusted for seasonal and calendar effects, recorded a variation rate of 3.0% in February, as compared to the same month of the previous year. This rate is 1.0 points higher than that registered in January.

The original IPI series experienced an annual variation of 3.9%. This rate is 0.2 points lower than that of January.

### General Industrial Production Index

Annual rate (percentage)



All sectors showed positive annual rates. It is worth highlighting the increase in *Durable consumer goods* (9.1%) followed by *Non-durable consumer goods* (5.4%).

### Annual rates of industrial production indices: General and by economic destination of the goods

	Original index Annual rate (%)	Seasonally adjusted index Annual rate (%)
General Index	3.9	3.0
Consumer goods	6.2	6.0
- Durable consumer goods	8.5	9.1
- Non-durable consumer goods	6.0	5.4
Capital goods	2.0	1.8
Intermediate goods	4.4	4.5
Energy	2.5	2.6

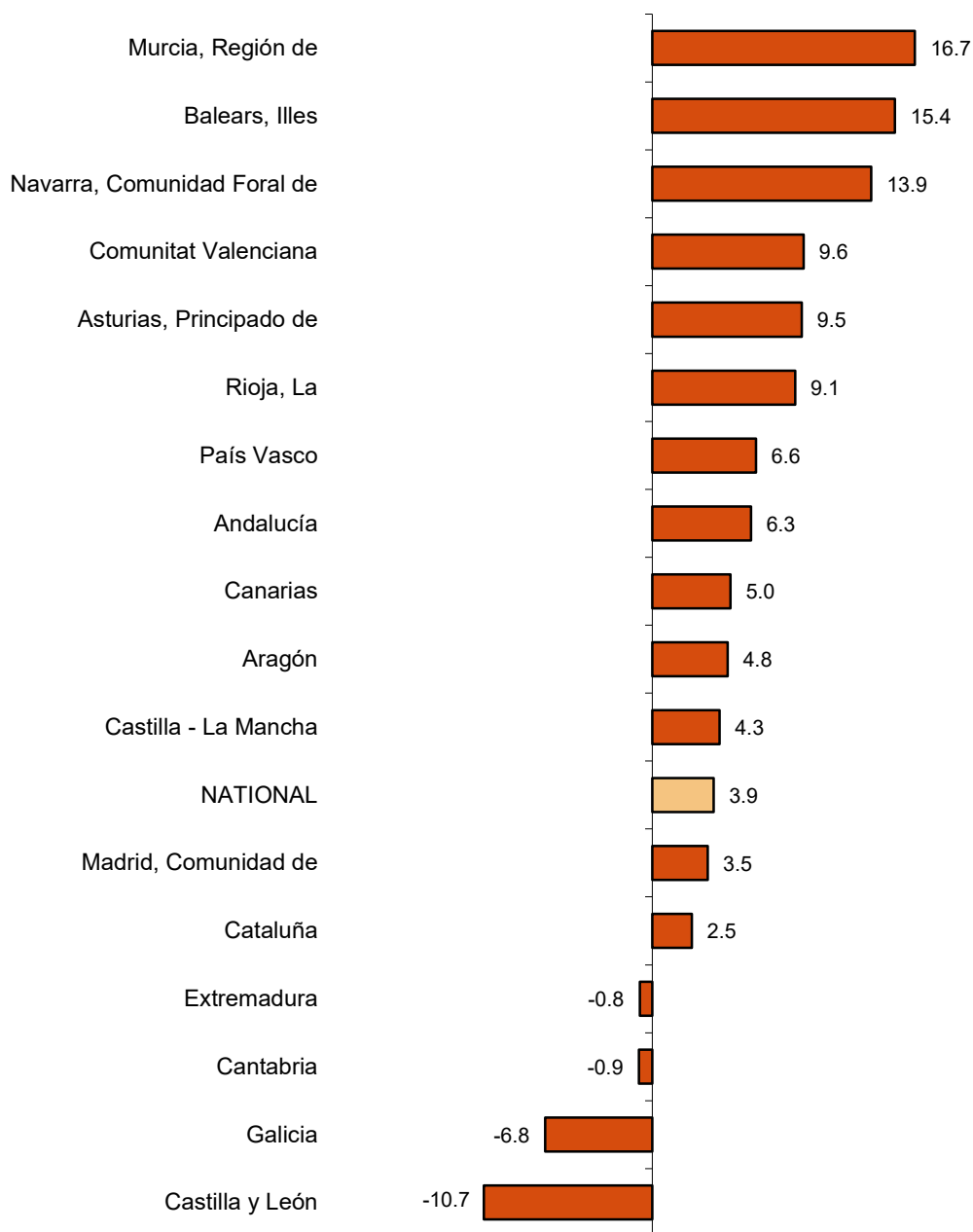
## Results by Autonomous Communities. Annual variation rates of industrial production. Original series

The annual rate of industrial production increased as compared to February 2021 in 13 Autonomous Communities and decreased in the other four.

The largest increases were recorded in Región de Murcia (16.7%), Illes Balears (15.4%) and Comunidad Foral de Navarra (13.9%). The largest decreases were recorded in Castilla y León (-10.7%), Galicia (-6.8%) and Cantabria (-0.9%).

### General indices: national and by Autonomous Communities

February 2022. Annual rate (percentage)



## Data Review and Update

Coinciding with today's publication, the INE has updated the data of the IPI series corresponding to the last two months. In the case of the series adjusted for calendar effects and for seasonal and calendar effects, the series is revised from the beginning, following the INE standard. The results are available at INEBase.

## Methodological note

The Industrial Production Index (IPI) is a short-term indicator that measures the monthly evolution of the productive activity of the industrial branches, excluding construction, contained in the National Classification of Economic Activities 2009 (CNAE-2009). It therefore investigates the activities included in sections B, C, D and division 36: Water collection, treatment and supply, from section E of the CNAE-2009.

The IPI measures the joint evolution of quantity and quality, eliminating the influence of prices.

Type of survey: monthly continuous survey.

**Base year:** 2015.

**Population scope:** industrial establishments whose main activity is included in sections B, C, D and division 36 of the CNAE-2009.

**Geographical scope:** the entire national territory.

**Sample size:** 11,500 industrial establishments and more than 1,100 products.

**Collection method:** completion of the questionnaire by the respondent using one of the following methods: internet (IRIA system), e-mail, fax, telephone or by postal mail.

For more information the methodology can be accessed at:

[https://www.ine.es/en/daco/daco43/metoipi15\\_en.pdf](https://www.ine.es/en/daco/daco43/metoipi15_en.pdf)

And the standardised methodological report at:

<https://www.ine.es/dynt3/metadatos/en/RespuestaDatos.html?oe=30050>

INE statistics are produced in accordance with the Code of Good Practice for European Statistics, which is the basis for the institution's quality policy and strategy. For more information see the section on [Quality at INE and the Code of Best Practices](#) on the INE website.

---

For further information see **INEbase:** [www.ine.es/en/](http://www.ine.es/en/) Twitter: [@es\\_ine](https://twitter.com/es_ine)

All press releases at: [www.ine.es/en/prensa/prensa\\_en.htm](http://www.ine.es/en/prensa/prensa_en.htm)

---

**Press Office:** Telephone numbers: (+34) 91 583 93 63 /94 08 – [gprensa@ine.es](mailto:gprensa@ine.es)

**Information Area:** Telephone number: (+34) 91 583 91 00 – [www.ine.es/infoine/?L=1](http://www.ine.es/infoine/?L=1)

---

## Industrial Production Indices. Base 2015

**February 2022**

Provisional Data

### 1. Industrial Production Indices: General and by economic destination adjusted for seasonal and calendar effects

	Index	Rate (%)		
		Monthly	Annual	Year-to-date average
General Index	106.2	0.9	3.0	2.5
Consumer goods	106.6	2.0	6.0	5.8
- Durable consumer goods	109.2	1.1	9.1	7.3
- Non-durable consumer goods	104.9	1.4	5.4	5.3
Capital goods	104.2	1.1	1.8	0.0
Intermediate goods	111.1	1.7	4.5	3.2
Energy	96.9	-0.7	2.6	1.7

### 2. Industrial Production Indices: General and by economic destination adjusted for seasonal and calendar effects

	Index	Rate (%)	
		Annual	Year-to-date average
General Index	105.0	4.2	2.8
Consumer goods	103.7	6.5	6.0
- Durable consumer goods	109.5	8.9	7.3
- Non-durable consumer goods	102.6	6.3	5.5
Capital goods	107.4	2.2	0.4
Intermediate goods	112.3	4.6	3.0
Energy	93.0	2.6	1.7

### 3. Industrial Production Indices: General and by economic destination. Original series

	Index	Rate (%)		Repercussion Annual
		Annual	Year-to-date average	
General Index	104.0	3.9	4.0	
Consumer goods	102.9	6.2	7.5	1.551
- Durable consumer goods	109.1	8.5	9.2	0.172
- Non-durable consumer goods	102.3	6.0	7.4	1.379
Capital goods	106.1	2.0	1.8	0.461
Intermediate goods	112.0	4.4	4.2	1.404
Energy	92.0	2.5	2.1	0.493

**4. Industrial Production Indices: General and by branches of activity (CNAE 2009).  
Original series**

	Index	Rate (%)		Repercussion Annual
		Annual	Year-to-date average	
General Index	104.0	3.9	4.0	
B. Mining and quarrying industries	76.9	-3.1	7.8	-0.017
Extraction of anthracite, coal and lignite	..	..	..	..
National crude petroleum and natural gas	..	..	..	..
Extraction of metallic ores	..	..	..	..
Other mining and quarrying	90.8	-3.8	8.2	-0.021
C. Manufacturing industry	107.0	4.4	4.8	3.617
Food Industry	98.7	0.1	3.3	0.017
Manufacture of beverages.	88.6	12.4	13.8	0.321
Tobacco industry.	..	..	..	..
Textile industry	106.1	18.9	15.9	0.183
Manufacture of garments	126.8	40.3	37.3	0.337
Leather and footwear industry	84.9	11.9	7.1	0.085
Manufacture of wood and of products of wood and cork, except furniture; basketmaking and wickerwork	135.6	30.0	29.8	0.389
Manufacture of paper and paper-products	101.1	-0.9	1.1	-0.022
Graphic arts and reproduction of recorded media	70.3	3.6	4.7	0.040
Manufacture of coke and refined petroleum products	91.8	9.2	15.2	0.184
Chemical Industry	115.1	7.1	7.2	0.471
Manufacture of pharmaceutical products	132.7	5.9	4.9	0.272
Rubber and plastic material transformation industry	118.1	3.2	1.7	0.164
Manufacture of other non-metallic ore products	118.0	7.5	7.0	0.304
Metallurgy; manufacture of iron, steel and ferro-alloy products	99.8	-1.4	-1.2	-0.049
Manufacture of metal products, except machinery and equipment	109.8	2.9	3.8	0.242
Manufacture of computers, electronic and optical products	123.7	12.7	15.2	0.147
Manufacture of electrical material and equipment	119.1	4.2	3.1	0.135
Manufacture of machinery and equipment n.e.c.	124.8	13.2	11.1	0.665
Manufacture of motor vehicles, trailers and semi-trailers	88.7	-11.1	-10.6	-0.899
Manufacture of other transport equipment	104.1	7.4	9.7	0.195
Manufacture of furniture.	111.5	9.4	11.3	0.121
Other manufacturing industries	120.5	8.6	10.0	0.105
Repair and installation of machinery and equipment	115.2	7.9	4.2	0.231
D. Supply of electrical energy, gas, steam and air conditioning	94.2	2.7	1.2	0.404
E. Water supply, activities, waste management and decontamination*	80.8	-3.9	-2.4	-0.094

\* It only includes Water collection, treatment and supply

(..) Data not available due to statistical secrecy.

## 5. Industrial production indices: national and by Autonomous Community. Original series

	Index	Rate (%)	
		Annual	Year-to-date average
National	104.0	3.9	4.0
Andalucía	90.4	6.3	9.7
Aragón	107.0	4.8	1.6
Asturias, Principado de	102.7	9.5	9.6
Balears, Illes	78.2	15.4	11.1
Canarias	84.3	5.0	5.2
Cantabria	118.0	-0.9	0.4
Castilla y León	90.5	-10.7	-7.5
Castilla-La Mancha	98.3	4.3	5.7
Cataluña	105.7	2.5	0.9
Comunitat Valenciana	111.0	9.6	7.4
Extremadura	96.2	-0.8	-4.0
Galicia	99.8	-6.8	-3.3
Madrid, Comunidad de	108.6	3.5	4.4
Murcia, Región de	119.0	16.7	15.5
Navarra, Comunidad Foral de	118.1	13.9	10.9
País Vasco	107.4	6.6	8.5
Rioja, La	92.9	9.1	3.9

More detailed information by Autonomous Community may be obtained at:

Andalucía	<a href="http://www.juntadeandalucia.es/institutodeestadisticaycartografia">www.juntadeandalucia.es/institutodeestadisticaycartografia</a>
Aragón	<a href="http://www.aragon.es/iaest/ipi">www.aragon.es/iaest/ipi</a>
Principado de Asturias	<a href="http://www.sadei.es">www.sadei.es</a>
Illes Balears	<a href="http://www.ibestat.caib.es">www.ibestat.caib.es</a>
Canarias	<a href="http://www.gobiernodecanarias.org/istac">www.gobiernodecanarias.org/istac</a>
Cantabria	<a href="http://www.icane.es">www.icane.es</a>
Castilla y León	<a href="http://www.jcyl.es/estadistica">www.jcyl.es/estadistica</a>
Castilla - La Mancha	<a href="http://www.jccm.es/estadistica">www.jccm.es/estadistica</a>
Cataluña	<a href="http://www.idescat.cat">www.idescat.cat</a>
Comunitat Valenciana	<a href="http://www.ive.es">www.ive.es</a>
Extremadura	<a href="http://estadistica.juntaex.es">http://estadistica.juntaex.es</a>
Galicia	<a href="http://www.ige.xunta.es">www.ige.xunta.es</a>
Comunidad de Madrid	<a href="http://www.madrid.org/iestadis">www.madrid.org/iestadis</a>
Región de Murcia	<a href="http://econet.carm.es">http://econet.carm.es</a>
La Rioja	<a href="http://www.larioja.org">www.larioja.org</a>