

Industrial Production Indices (IPI). Base 2015
March 2022. Provisional Data

After adjusting for seasonal and calendar effects, the monthly variation of the Industrial Production Index stood at -1.8%,

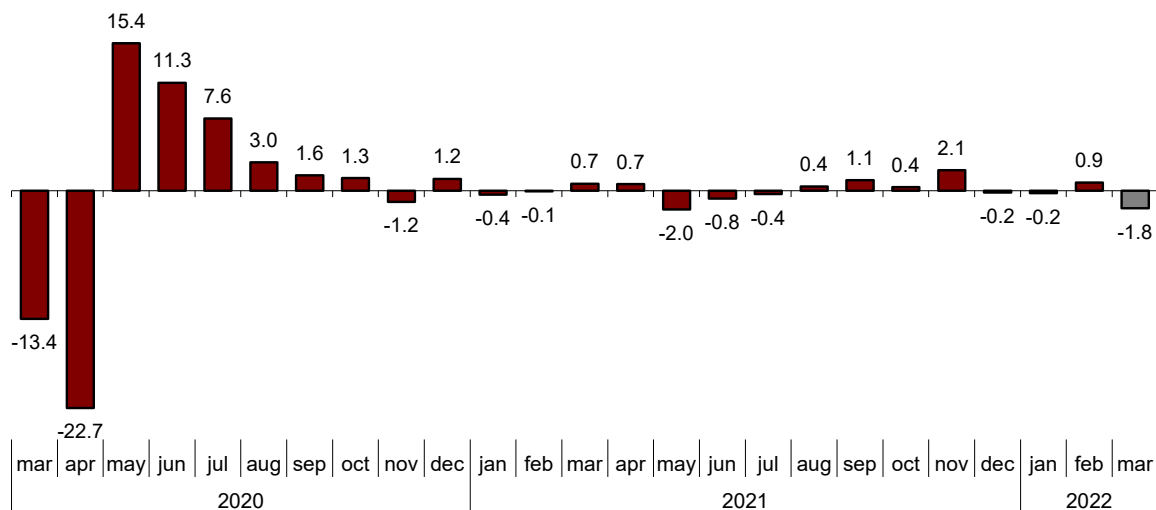
The annual rate of the Industrial Production Index stands at 0.1% in the series adjusted for seasonal and calendar effects and at 1.1% in the original series

Monthly evolution of industrial production

After adjusting for seasonal and calendar effects, the monthly variation of the Industrial Production Index (IPI) between March and February stood at -1.8%. This rate is 2.7 points lower than that observed in February.

General Industrial Production Index

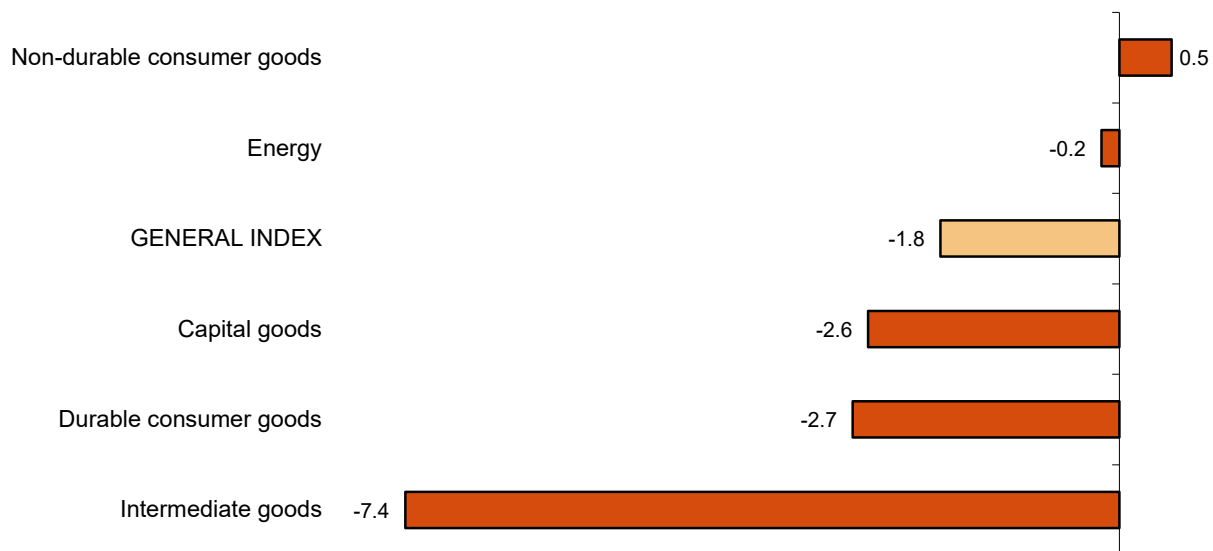
Adjusted for seasonal and calendar effects. Monthly rate (percentage)



Four of the five sectors showed negative monthly rates. It is worth highlighting the decrease in *Intermediate goods* (-7.4%) followed by *Durable consumer goods* (-2.7%). The only sector that increased was *Non-durable consumer goods* (0.5%).

Industrial Production Indices: General and by economic destination

Adjusted for seasonal and calendar effects March 2022. Monthly rate (percentage)



A more detailed analysis shows the branches of activity with the highest and lowest monthly rates in the month of March.

Branches of activity with the highest monthly rates of the industrial production index adjusted for seasonal and calendar effects

Activity (Division from CNAE 2009)	Monthly rate (%)
Manufacture of pharmaceutical products	18.8
Tobacco industry	14.7
Graphic arts and reproduction of recorded media	5.0

Branches of activity with the lowest monthly rates of the industrial production index adjusted for seasonal and calendar effects

Activity (Division from CNAE 2009)	Monthly rate (%)
Manufacture of other non-metallic ore products	-11.6
Manufacture of garments	-11.3
Other mining and quarrying	-9.3

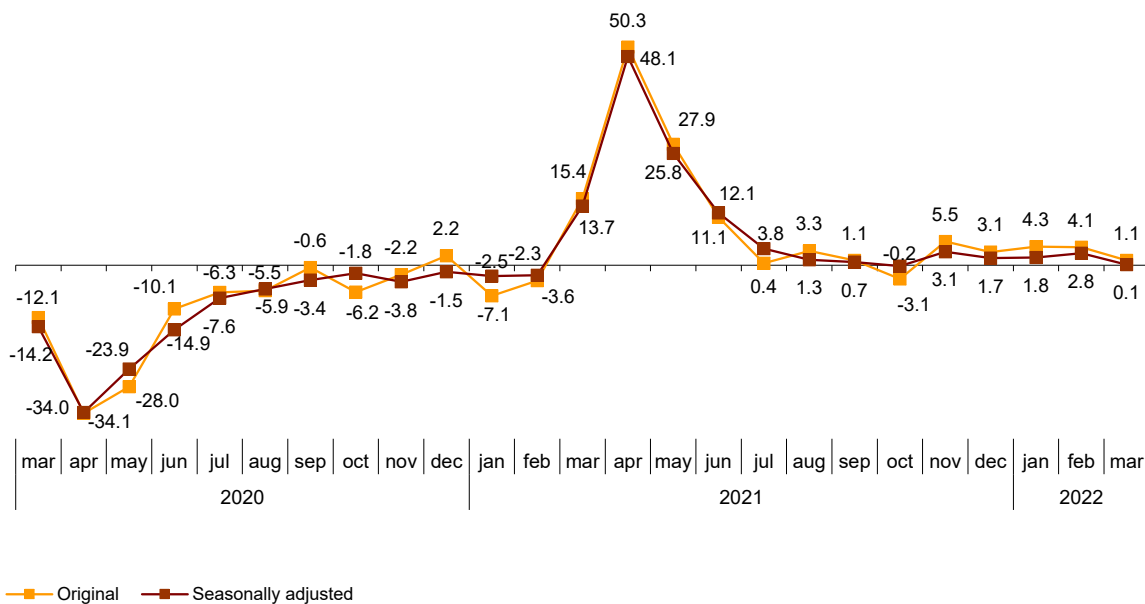
Annual evolution of industrial production

The Industrial Production Index, adjusted for seasonal and calendar effects, recorded a variation rate of 0.1% in March, as compared to the same month of the previous year. This rate is 2.7 points lower than that observed in February.

The original IPI series experienced an annual variation of 1.1%. This rate is 3.0 points lower than that of February.

General Industrial Production Index

Annual rate (percentage)



By sectors, *Non-durable consumer goods* (4.9%), *Energy* (2.3%) and *Durable consumer goods* (2.1%) showed positive monthly rates. On the other hand, *Intermediate goods* (-4.5%) and *Capital goods* (-1.2%) showed negative annual rates.

Annual rates of industrial production indices: General and by economic destination of the goods

	Original index Annual rate (%)	Seasonally adjusted index Annual rate (%)
General Index	1.1	0.1
Consumer goods	6.0	2.8
- Durable consumer goods	3.5	2.1
- Non-durable consumer goods	6.2	4.9
Capital goods	0.4	-1.2
Intermediate goods	-3.2	-4.5
Energy	2.8	2.3

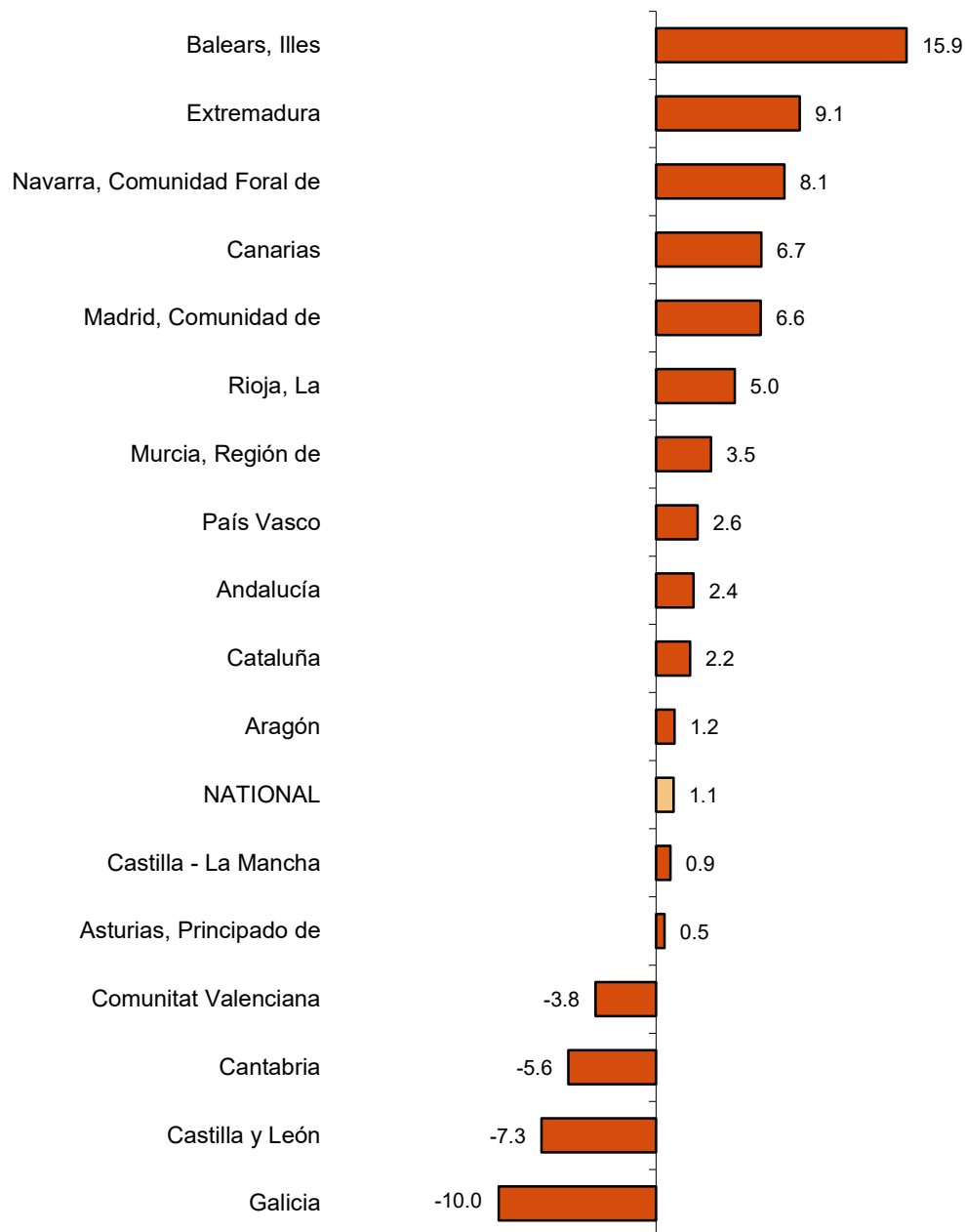
Results by Autonomous Communities. Annual variation rates of industrial production. Original series

The annual rate of industrial production increased as compared to March 2021 in 13 Autonomous Communities and decreased in the other four.

The largest increases were recorded in Illes Balears (15.9%), Extremadura (9.1%) and Comunidad Foral de Navarra (8.1%). The largest decreases were recorded in Galicia (-10.0%), Castilla y León (-7.3%) and Cantabria (-5.6%).

General indices: national and by Autonomous Communities

March 2022. Annual rate (percentage)



Data Review and Update

Coinciding with today's publication, the INE has updated the data of the IPI series corresponding to the last two months. In the case of the series adjusted for calendar effects and for seasonal and calendar effects, the series is revised from the beginning, following the INE standard. The results are available at INEBase.

Methodological note

The Industrial Production Index (IPI) is a short-term indicator that measures the monthly evolution of the productive activity of the industrial branches, excluding construction, contained in the National Classification of Economic Activities 2009 (CNAE-2009). It therefore investigates the activities included in sections B, C, D and division 36: Water collection, treatment and supply, from section E of the CNAE-2009.

The IPI measures the joint evolution of quantity and quality, eliminating the influence of prices.

Type of survey: monthly continuous survey.

Base year: 2015.

Population scope: industrial establishments whose main activity is included in sections B, C, D and division 36 of the CNAE-2009.

Geographical scope: the entire national territory.

Sample size: 11,500 industrial establishments and more than 1,100 products.

Collection method: completion of the questionnaire by the respondent using one of the following methods: internet (IRIA system), e-mail, fax, telephone or by postal mail.

For more information the methodology can be accessed at:

https://www.ine.es/en/daco/daco43/metoipi15_en.pdf

And the standardised methodological report at:

<https://www.ine.es/dynt3/metadatos/en/RespuestaDatos.html?oe=30050>

INE statistics are produced in accordance with the Code of Good Practice for European Statistics, which is the basis for the institution's quality policy and strategy. For more information see the section on [Quality at INE and the Code of Best Practices](#) on the INE website.

For further information see **INEbase**: www.ine.es/en/ Twitter: [@es_ine](https://twitter.com/es_ine)

All press releases at: www.ine.es/en/prensa/prensa_en.htm

Press Office: Telephone numbers: (+34) 91 583 93 63 /94 08 – gprensa@ine.es

Information Area: Telephone number: (+34) 91 583 91 00 – www.ine.es/infoine/?L=1

Industrial Production Indices. Base 2015

March 2022

Provisional Data

1. Industrial Production Indices: General and by economic destination adjusted for seasonal and calendar effects

	Index	Rate (%)		
		Monthly	Annual	Year-to-date average
General Index	103.7	-1.8	0.1	1.6
Consumer goods	105.3	-1.3	2.8	4.8
- Durable consumer goods	105.9	-2.7	2.1	5.5
- Non-durable consumer goods	106.1	0.5	4.9	5.5
Capital goods	101.5	-2.6	-1.2	-0.1
Intermediate goods	102.9	-7.4	-4.5	0.6
Energy	96.7	-0.2	2.3	1.9

2. Industrial Production Indices: General and by economic destination adjusted for seasonal and calendar effects

	Index	Rate (%)	
		Annual	Year-to-date average
General Index	107.9	-0.3	1.9
Consumer goods	110.8	2.7	4.9
- Durable consumer goods	109.4	1.2	5.2
- Non-durable consumer goods	112.2	4.9	5.4
Capital goods	109.8	-1.4	0.2
Intermediate goods	112.2	-4.5	0.3
Energy	96.7	2.3	1.9

3. Industrial Production Indices: General and by economic destination. Original series

	Index	Rate (%)		Repercussion Annual
		Annual	Year-to-date average	
General Index	113.1	1.1	3.1	
Consumer goods	117.5	6.0	7.0	1.538
- Durable consumer goods	117.1	3.5	7.2	0.070
- Non-durable consumer goods	117.5	6.2	7.0	1.467
Capital goods	116.6	0.4	1.7	0.097
Intermediate goods	117.7	-3.2	1.4	-1.051
Energy	98.0	2.8	2.3	0.524

**4. Industrial Production Indices: General and by branches of activity (CNAE 2009).
Original series**

	Index	Rate (%)		Repercussion
		Annual	Year-to-date average	Annual
General Index	113.1	1.1	3.1	
B. Mining and quarrying industries	76.3	-20.5	-3.6	-0.122
Extraction of anthracite, coal and lignite
National crude petroleum and natural gas
Extraction of metallic ores
Other mining and quarrying	89.1	-21.4	-3.8	-0.123
C. Manufacturing industry	116.9	0.9	3.5	0.782
Food Industry	109.9	2.9	3.2	0.330
Manufacture of beverages.	104.6	0.3	8.1	0.010
Tobacco industry.
Textile industry	119.5	6.0	12.0	0.065
Manufacture of garments	129.4	3.5	23.1	0.036
Leather and footwear industry	97.0	14.2	9.9	0.102
Manufacture of wood and of products of wood and cork, except furniture; basketmaking and wickerwork	134.7	15.4	24.4	0.200
Manufacture of paper and paper-products	110.2	1.6	1.3	0.039
Graphic arts and reproduction of recorded media	89.6	5.9	5.3	0.073
Manufacture of coke and refined petroleum products	93.9	4.0	11.3	0.077
Chemical Industry	118.5	-4.6	2.8	-0.319
Manufacture of pharmaceutical products	169.3	16.9	10.1	0.799
Rubber and plastic material transformation industry	120.6	-4.0	-0.3	-0.205
Manufacture of other non-metallic ore products	118.8	-5.0	2.5	-0.207
Metallurgy; manufacture of iron, steel and ferro-alloy products	107.7	-5.7	-2.6	-0.198
Manufacture of metal products, except machinery and equipment	118.1	-3.3	2.5	-0.279
Manufacture of computers, electronic and optical products	141.3	6.4	11.6	0.079
Manufacture of electrical material and equipment	127.8	1.5	1.8	0.048
Manufacture of machinery and equipment n.e.c.	145.7	4.5	8.8	0.257
Manufacture of motor vehicles, trailers and semi-trailers	89.7	-13.2	-11.8	-0.991
Manufacture of other transport equipment	118.3	17.9	13.3	0.439
Manufacture of furniture.	122.5	2.2	7.9	0.030
Other manufacturing industries	144.9	11.3	10.4	0.144
Repair and installation of machinery and equipment	123.7	8.8	5.4	0.245
D. Supply of electrical energy, gas, steam and air conditioning	100.5	4.5	2.3	0.641
E. Water supply, activities, waste management and decontamination*	88.7	-7.9	-4.4	-0.194

* It only includes Water collection, treatment and supply

(..) Data not available due to statistical secrecy.

5. Industrial production indices: national and by Autonomous Community. Original series

	Index	Rate (%)	
		Annual	Year-to-date average
National	113.1	1.1	3.1
Andalucía	96.7	2.4	7.5
Aragón	114.9	1.2	1.7
Asturias, Principado de	106.3	0.5	6.7
Balears, Illes	88.8	15.9	12.4
Canarias	98.4	6.7	5.7
Cantabria	123.0	-5.6	-1.8
Castilla y León	96.5	-7.3	-7.6
Castilla-La Mancha	109.3	0.9	4.2
Cataluña	119.0	2.2	1.5
Comunitat Valenciana	114.1	-3.8	3.1
Extremadura	106.1	9.1	1.1
Galicia	101.2	-10.0	-5.5
Madrid, Comunidad de	126.0	6.6	5.3
Murcia, Región de	119.4	3.5	11.6
Navarra, Comunidad Foral de	129.7	8.1	10.0
País Vasco	115.3	2.6	6.4
Rioja, La	101.0	5.0	4.3

More detailed information by Autonomous Community may be obtained at:

Andalucía	www.juntadeandalucia.es/institutodeestadisticaycartografia
Aragón	www.aragon.es/iaest/ipi
Principado de Asturias	www.sadei.es
Illes Balears	www.ibestat.caib.es
Canarias	www.gobiernodecanarias.org/istac
Cantabria	www.icane.es
Castilla y León	www.jcyl.es/estadistica
Castilla - La Mancha	www.jccm.es/estadistica
Cataluña	www.idescat.cat
Comunitat Valenciana	www.ive.es
Extremadura	http://estadistica.juntaex.es
Galicia	www.ige.xunta.es
Comunidad de Madrid	www.madrid.org/iestadis
Región de Murcia	http://econet.carm.es
La Rioja	www.larioja.org