

Industrial Production Indices (IPI). Base 2015
May 2023. Provisional data

The monthly variation of the Industrial Production Index was 0.6%, after adjusting for seasonal and calendar effects

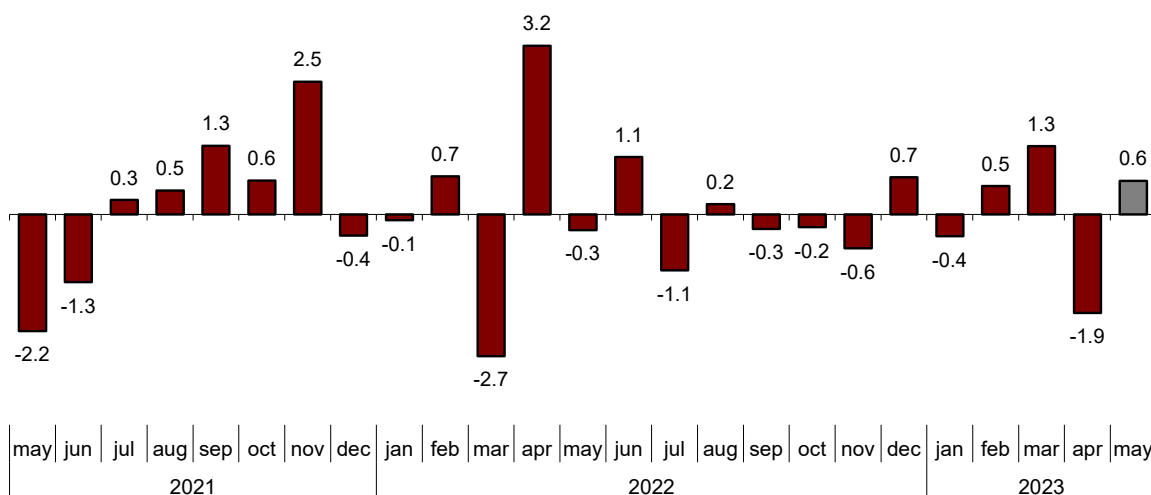
The annual rate of the Industrial Production Index was -0.1% in the series adjusted for seasonal and calendar effects and 0.2% in the original series

Monthly evolution of industrial production

After adjusting for seasonal and calendar effects, the monthly variation of the Industrial Production Index (IPI) between May and April was 0.6%. This rate is 2.5 points higher than that observed in April.

General Industrial Production Index

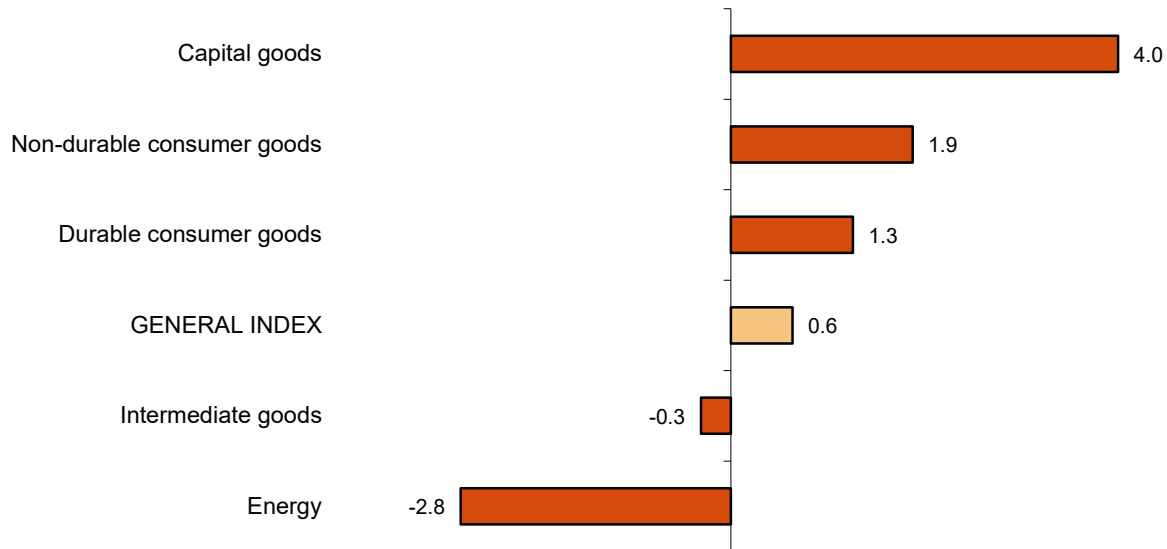
Adjusted for seasonal and calendar effects. Monthly rate (percentage)



By sectors, *Capital goods* (4.0%), *Non-durable consumer goods* (1.9%) and *Durable consumer goods* (1.3%) showed positive monthly rates. On the other hand, *Energy* (-2.8%) and *Intermediate goods* (-0.3%) showed negative monthly rates.

Industrial Production Index: General and by economic destination

Adjusted for seasonal and calendar effects. May 2023. Monthly rate (percentage)



A more detailed analysis shows the branches of activity with the highest and lowest monthly rates in the month of May.

Branches of activity with the highest monthly rates of the industrial production index adjusted for seasonal and calendar effects

Activity (Division from CNAE 2009)	Monthly rate (%)
Tobacco industry	13.6
Manufacture of garments	7.3
Manufacture of motor vehicles, trailers and semi-trailers	7.2

Branches of activity with the lowest monthly rates of the industrial production index adjusted for seasonal and calendar effects

Activity (Division from CNAE 2009)	Monthly rate (%)
Manufacture of coke and refined petroleum products	-3.5
Extraction of anthracite, coal and lignite	-3.3
Manufacture of other non-metallic ore products	-2.7

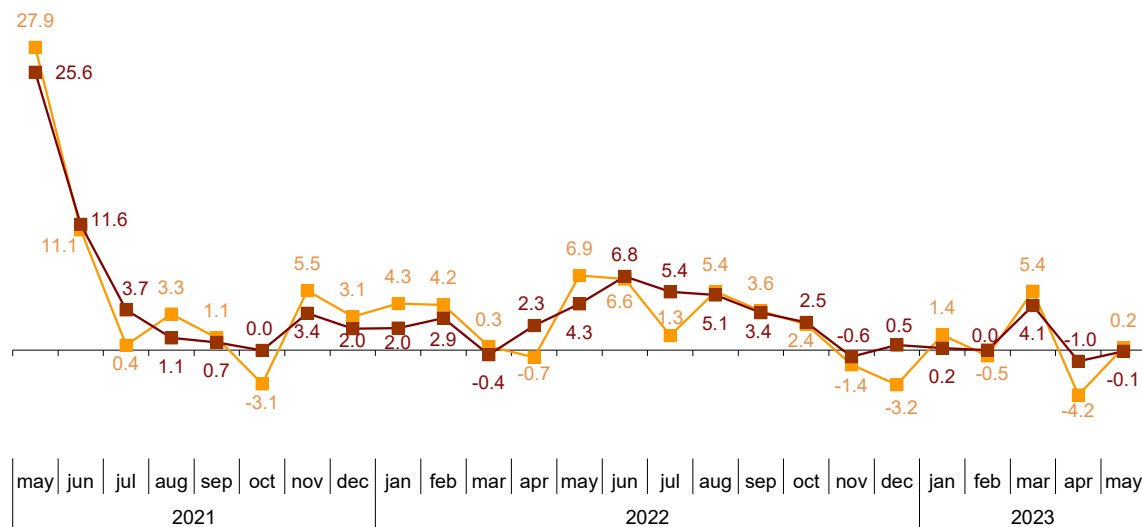
Annual evolution of industrial production

The Industrial Production Index, adjusted for seasonal and calendar effects, recorded a variation rate of -0.1% in May, as compared to the same month of the previous year. This rate is 0.9 points higher than that registered in April.

The original IPI series experienced an annual variation of 0.2%. This rate is 4.4 points higher than that of April.

General Industrial Production Index

Annual rate (percentage)



— Original — Seasonally adjusted

By sectors, *Capital goods* (7.0%) and *Non-durable consumer goods* (2.3%) showed positive annual rates. On the other hand *Durable consumer goods* (-5.6%), *Energy* (-5.1%) and *Intermediate goods* (-5.0%) showed negative annual rates.

Annual rates of the industrial production index: General and by economic destination of the goods

	Original index Annual rate (%)	Seasonally adjusted index Annual rate (%)
General Index	0.2	-0.1
Consumer goods	2.7	1.6
- Durable consumer goods	-4.4	-5.6
- Non-durable consumer goods	3.3	2.3
Capital goods	8.1	7.0
Intermediate goods	-4.3	-5.0
Energy	-5.0	-5.1

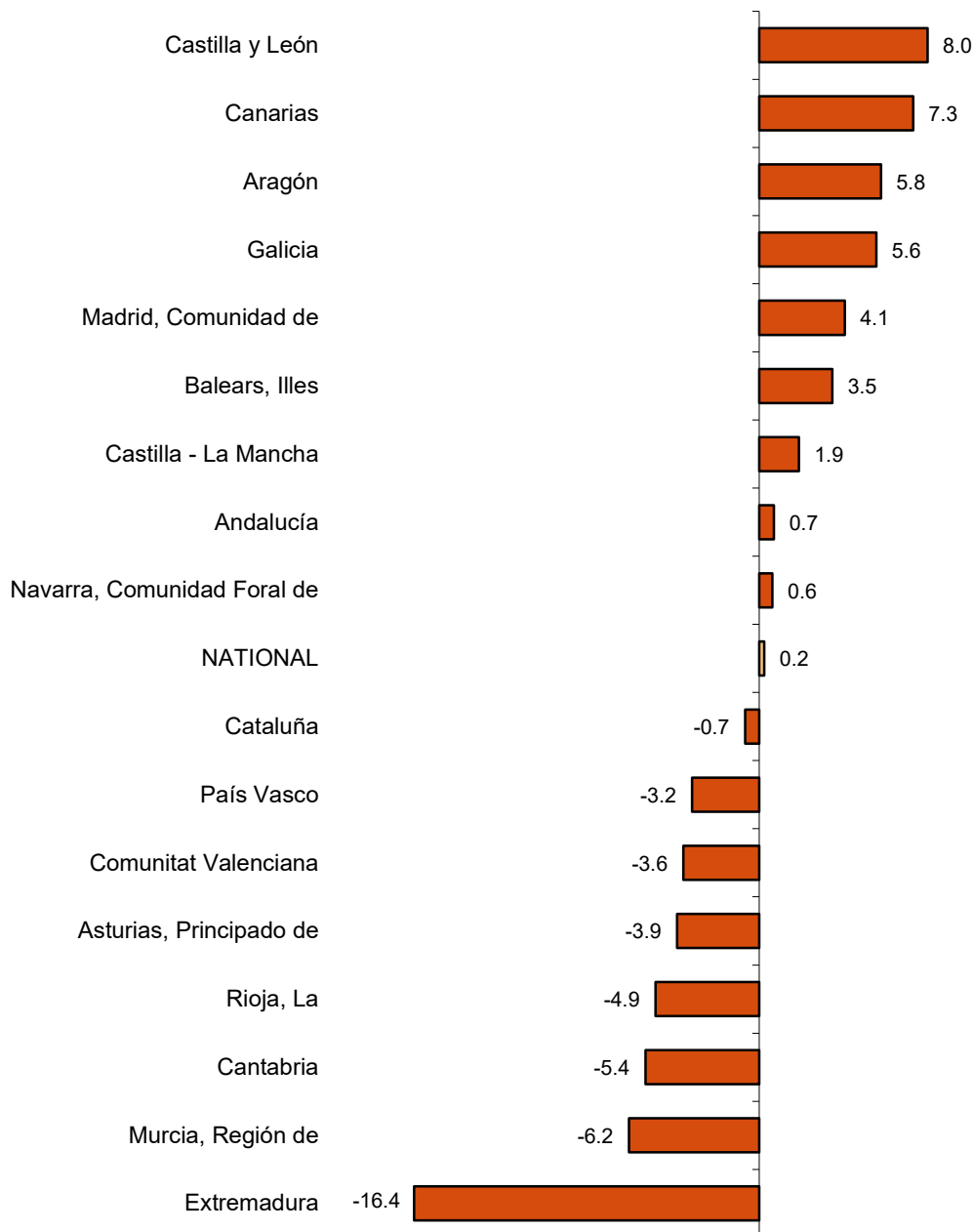
Results by Autonomous Communities. Annual variation rates of industrial production. Original series

The annual rate of industrial production increased as compared to May 2022 in nine Autonomous Communities and decreased in the other nine.

The largest decreases were recorded in Extremadura (-16.4%), Región de Murcia (-6.2%) and Cantabria (-5.4%). The largest increases were recorded in Castilla y León (8.0%), Canarias (7.3%) and Aragón (5.8%).

General index: national and by Autonomous Communities

May 2023. Annual rate (percentage)



Data reviews and updates

Coinciding with today's publication, the INE has updated the data of the IPI series corresponding to the last two months. In the case of the series adjusted for calendar effects and for seasonal and calendar effects, the series is revised from the beginning, following the INE standard. The results are available at INEBase.

Methodological note

The Industrial Production Index (IPI) is a short-term indicator that measures the monthly evolution of the productive activity of the industrial branches, excluding construction, contained in the National Classification of Economic Activities 2009 (CNAE-2009). It therefore investigates the activities included in sections B, C, D and division 36: Water collection, treatment and supply, from section E of the CNAE-2009.

The IPI measures the joint evolution of quantity and quality, eliminating the influence of prices.

Type of survey: monthly continuous survey.

Base year: 2015.

Population scope: industrial establishments whose main activity is included in sections B, C, D and division 36 of the CNAE-2009.

Geographical scope: the entire national territory.

Sample size: 11,500 industrial establishments and more than 1,100 products.

Collection method: completion of the questionnaire by the respondent using one of the following methods: internet (IRIA system), e-mail, fax, telephone or by postal mail.

For more information the methodology can be accessed at:

<https://www.ine.es/daco/daco43/metoipi15.pdf>

And the standardised methodological report at:

<https://www.ine.es/dynt3/metadatos/es/RespuestaDatos.html?oe=30050>

INE statistics are produced in accordance with the Code of Good Practice for European Statistics, which is the basis for the institution's quality policy and strategy. For more information see the section on [Quality at INE and the Code of Best Practices](#) on the INE website.

For further information see **INEbase:** www.ine.es/en/ Twitter: [@es_ine](https://twitter.com/es_ine)

All press releases at: www.ine.es/en/prensa/prensa_en.htm

Press office: Telephone numbers: (+34) 91 583 93 63 /94 08 – gprensa@ine.es

Information Area: Telephone number: (+34) 91 583 91 00 – www.ine.es/infoine/?L=1

Industrial Production Index. Base 2015

May 2023

Provisional data

1. Industrial Production Index: General and by economic destination adjusted for seasonal and calendar effects

	Index	Rate (%)		
		Monthly	Annual	Year-to-date average
General Index	106.2	0.6	-0.1	0.6
Consumer goods	109.5	2.5	1.6	1.2
- Durable consumer goods	107.3	1.3	-5.6	-0.2
- Non-durable consumer goods	109.7	1.9	2.3	1.8
Capital goods	115.0	4.0	7.0	7.0
Intermediate goods	104.4	-0.3	-5.0	-3.1
Energy	95.4	-2.8	-5.1	-1.8

2. Industrial Production Index: General and by economic destination adjusted for seasonal and calendar effects

	Index	Rate (%)	
		Annual	Year-to-date average
General Index	111.4	-0.5	0.5
Consumer goods	115.9	1.8	1.1
- Durable consumer goods	117.3	-5.6	0.0
- Non-durable consumer goods	116.0	2.6	1.3
Capital goods	122.4	7.2	6.8
Intermediate goods	115.1	-4.9	-3.0
Energy	89.8	-5.3	-1.8

3. Industrial Production Index: General and by economic destination. Original series

	Index	Rate (%)		Repercussion Annual
		Annual	Year-to-date average	
General Index	113.0	0.2	0.6	
Consumer goods	118.0	2.7	1.2	0.710
- Durable consumer goods	120.0	-4.4	0.0	-0.098
- Non-durable consumer goods	117.8	3.3	1.3	0.809
Capital goods	124.4	8.1	6.9	1.831
Intermediate goods	116.7	-4.3	-2.9	-1.388
Energy	90.2	-5.0	-1.8	-0.923

**4. Industrial Production Index: General and by branches of activity (CNAE 2009).
Original series**

	Index	Rate (%)		Repercussion Annual
		Annual	Year-to-date average	
General Index	113.0	0.2	0.6	
B. Mining and quarrying industries	121.9	33.4	32.6	0.188
Extraction of anthracite, coal and lignite
National crude petroleum and natural gas
Extraction of metallic ores
Other mining and quarrying	145.6	34.9	34.2	0.189
C. Manufacturing industry	118.5	0.9	0.8	0.722
Food Industry	107.5	0.7	-2.2	0.084
Manufacture of beverages.	121.2	2.9	4.7	0.101
Tobacco industry.
Textile industry	106.3	-7.0	-7.4	-0.076
Manufacture of garments	135.9	16.5	0.5	0.158
Leather and footwear industry	81.9	-9.2	-6.6	-0.069
Manufacture of wood and of products of wood and cork, except furniture; basketmaking and wickerwork	119.6	-15.8	-20.9	-0.248
Manufacture of paper and paper-products	102.1	-9.8	-7.7	-0.243
Graphic arts and reproduction of recorded media	71.0	-6.9	-9.5	-0.077
Manufacture of coke and refined petroleum products	96.1	-10.7	-3.1	-0.243
Chemical Industry	109.6	-8.3	-7.7	-0.541
Manufacture of pharmaceutical products	166.7	10.6	9.2	0.518
Rubber and plastic material transformation industry	125.0	-1.5	-1.8	-0.079
Manufacture of other non-metallic ore products	120.5	-13.2	-5.9	-0.601
Metallurgy; manufacture of iron, steel and ferro-alloy products	101.4	-5.2	-3.8	-0.170
Manufacture of metal products, except machinery and equipment	123.2	-0.4	0.9	-0.037
Manufacture of computers, electronic and optical products	131.9	9.2	1.7	0.104
Manufacture of electrical material and equipment	141.4	6.2	13.2	0.204
Manufacture of machinery and equipment n.e.c.	140.5	-0.2	2.5	-0.010
Manufacture of motor vehicles, trailers and semi-trailers	111.2	19.2	14.3	1.297
Manufacture of other transport equipment	125.3	17.8	13.4	0.460
Manufacture of furniture.	125.0	-8.3	-1.5	-0.127
Other manufacturing industries	123.0	-3.3	-3.6	-0.042
Repair and installation of machinery and equipment	135.4	11.3	8.7	0.334
D. Supply of electrical energy, gas, steam and air conditioning	86.3	-5.3	-2.9	-0.700
E. Water supply, activities, waste management and decontamination*	109.3	0.7	5.9	0.020

* It only includes Water collection, treatment and supply

(..) Data not available due to statistical secrecy.

5. Industrial production index: national and by Autonomous Community. Original series

	Index	Rate (%)	
		Annual	Year-to-date average
National	113.0	0.2	0.6
Andalucía	99.0	0.7	-1.3
Aragón	125.1	5.8	1.9
Asturias, Principado de	102.6	-3.9	-3.8
Balears, Illes	94.9	3.5	0.0
Canarias	98.8	7.3	6.4
Cantabria	118.5	-5.4	-2.6
Castilla y León	103.3	8.0	5.2
Castilla-La Mancha	111.6	1.9	3.7
Cataluña	114.8	-0.7	-0.8
Comunitat Valenciana	116.0	-3.6	-0.9
Extremadura	99.5	-16.4	-0.5
Galicia	114.5	5.6	6.2
Madrid, Comunidad de	119.6	4.1	5.2
Murcia, Región de	115.3	-6.2	-8.9
Navarra, Comunidad Foral de	123.3	0.6	-2.3
País Vasco	116.5	-3.2	-0.9
Rioja, La	90.2	-4.9	-3.5

More detailed information by Autonomous Community may be obtained at:

Andalucía	Andalusia Institute of Statistics and Cartography (juntadeandalucia.es)
Aragón	Aragon Institute of Statistics (IAEST). Government of Aragon
Principado de Asturias	Home - Asturian Society for Economic and Industrial Studies (sadei.es)
Illes Balears	IBESTATIHome (caib.es)
Canarias	Home ISTAC - Government of the Canary Islands
Cantabria	Cantabrian Institute of Statistics - ICANE
Castilla y León	Statistics Statistics Council of Castilla y León (jcy.es)
Castilla - La Mancha	Start: Statistics Service of Castilla-La Mancha (jccm.es)
Cataluña	Idescat. Statistics Institute of Catalonia
Comunitat Valenciana	Home - Statistical Portal of the Generalitat Valenciana - Generalitat Valenciana (gva.es)
Extremadura	IEEX - JUNTAEX
Galicia	IGE - Galician Institute of Statistics
Community of Madrid	Statistical Portal. Community of Madrid
Región de Murcia	Statistical Portal of the Region of Murcia - CREM (carm.es)
La Rioja	Statistics - La Rioja Government Portal