

Industrial Production Indices (IPI). 2015 Base
June 2023. Provisional data

The monthly variation of the Industrial Production Index was -1.0%, after adjusting for seasonal and calendar effects

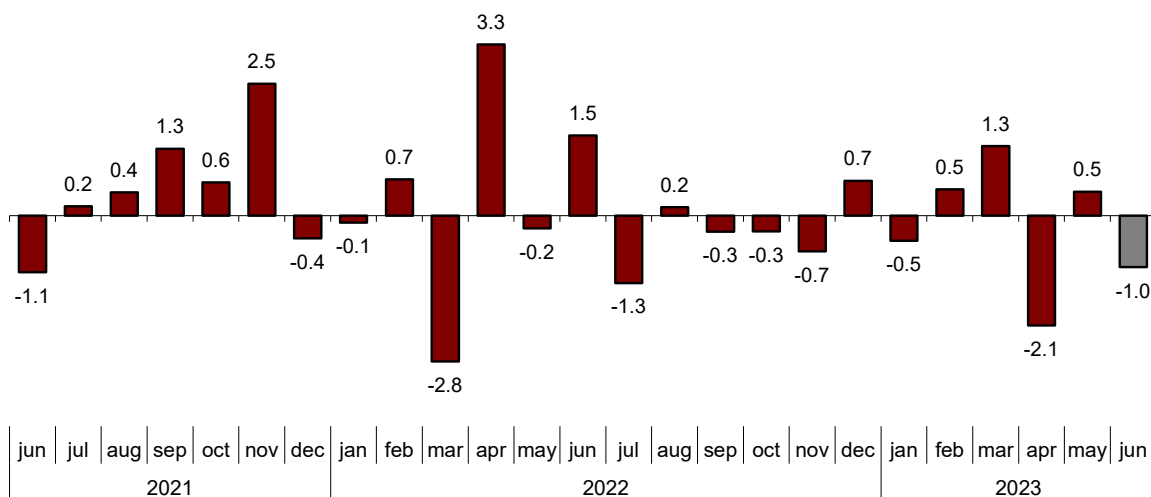
The annual rate of the Industrial Production Index was -3.0% in the series adjusted for seasonal and calendar effects and -1.4% in the original series

Monthly evolution of industrial production

After adjusting for seasonal and calendar effects, the monthly variation of the Industrial Production Index (IPI) between May and June was -1.0%. This rate is 1.5 points lower than that observed in May.

General Industrial Production Index

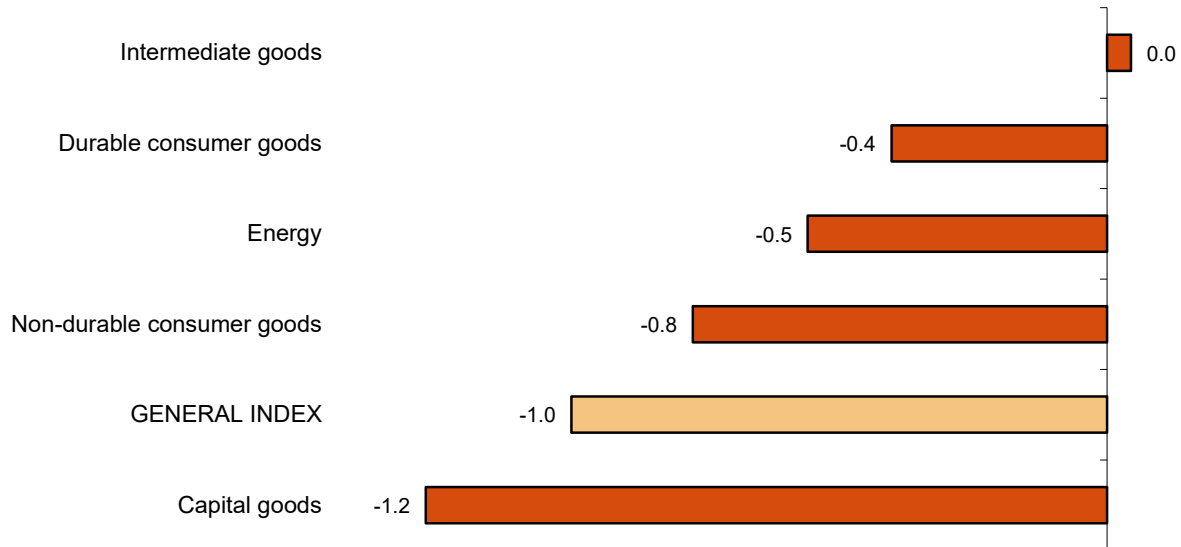
Adjusted for seasonal and calendar effects. Monthly rate (percentage)



Four of the five sectors showed negative monthly rates. It is worth highlighting the decrease in *Capital goods* (-1.2%) followed by *Non-durable consumer goods* (-1.0%). The only sector that increased was *Intermediate goods* (0.0%).

Industrial Production Index: General and by economic destination

Adjusted for seasonal and calendar effects. June 2023. Monthly rate (percentage)



A more detailed analysis shows the branches of activity with the highest and lowest monthly rates in the month of June.

Branches of activity with the highest monthly rates of the industrial production index adjusted for seasonal and calendar effects

Activity (Division from CNAE 2009)	Monthly rate (%)
Manufacture of computers, electronic and optical products	5.7
Other manufacturing industries	4.2
Manufacture of electrical material and equipment	4.1

Branches of activity with the lowest monthly rates of the industrial production index adjusted for seasonal and calendar effects

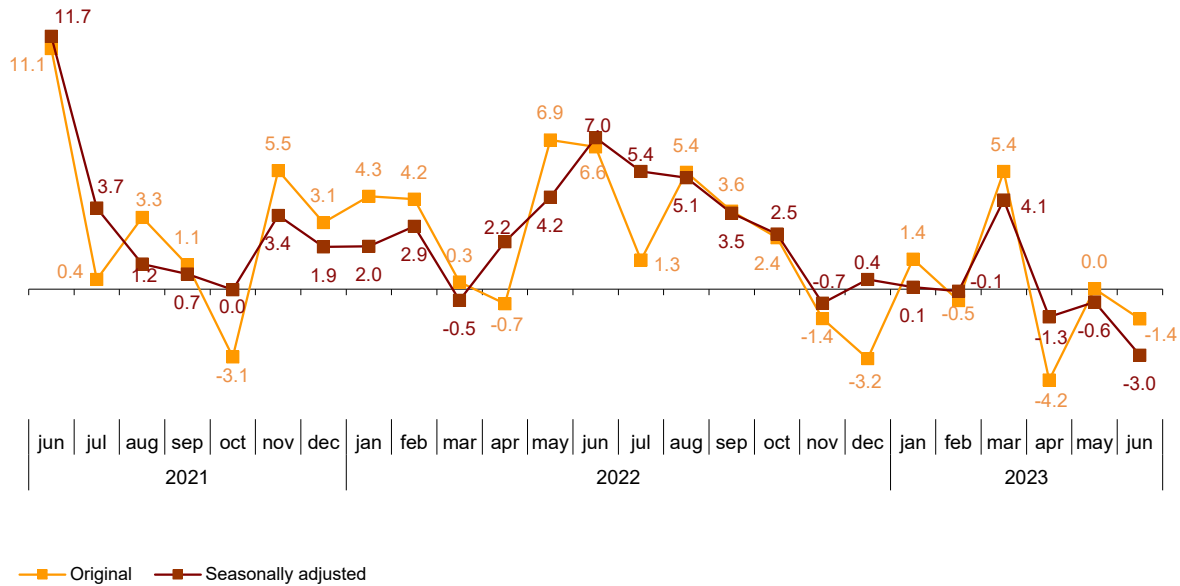
Activity (Division from CNAE 2009)	Monthly rate (%)
Extraction of anthracite, coal and lignite	-38.5
Other mining and quarrying	-33.0
Leather and footwear industry	-6.3

Annual evolution of industrial production

The Industrial Production Index, adjusted for seasonal and calendar effects, recorded a variation rate of -3.0% in June, as compared to the same month of the previous year. This rate is 2.4 points lower than that registered in May.

The original IPI series experienced an annual variation of -1.4%. This rate is 1.4 points lower than that of May.

General Industrial Production Index Annual rate (percentage)



Four of the five sectors showed negative annual rates. It is worth highlighting the decrease in *Energy* (-9.8%) followed by *Durable consumer goods* (-5.1%). The only sector that increased was *Capital goods* (2.6%).

Annual rates of the industrial production index: General and by economic destination of the goods

	Original index Annual rate (%)	Seasonally adjusted index Annual rate (%)
General Index	-1.4	-3.0
Consumer goods	1.3	-1.2
- Durable consumer goods	-3.3	-5.1
- Non-durable consumer goods	1.7	-0.3
Capital goods	4.6	2.6
Intermediate goods	-3.1	-4.9
Energy	-9.5	-9.8

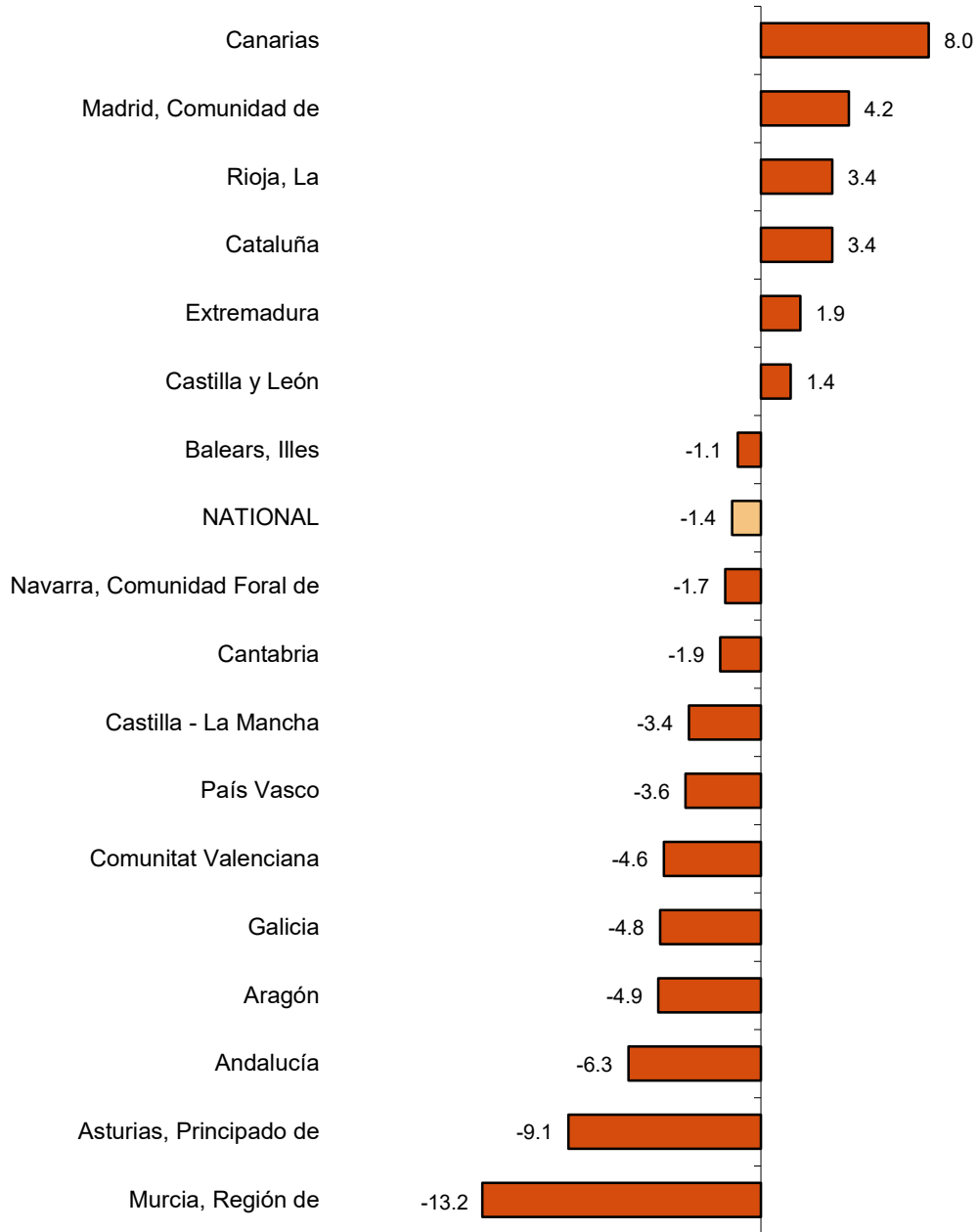
Results by Autonomous Communities. Annual variation rates of industrial production. Original series

The annual rate of industrial production increased as compared to June 2022 in six Autonomous Communities and decreased in the other eleven.

The largest decreases were recorded in Región de Murcia (-13.2%), Principado de Asturias (-9.1%) and Andalucía (-6.3%). The largest increases were recorded in Canarias (8.0%), Comunidad de Madrid (4.2%) and La Rioja (3.4%).

General index: national and by Autonomous Communities

June 2023. Annual rate (percentage)



Data Review and Update

Coinciding with today's publication, the INE has updated the data of the IPI series corresponding to the last two months. In the case of the series adjusted for calendar effects and for seasonal and calendar effects, the series is revised from the beginning, following the INE standard. The results are available at INEBase.

Methodological note

The Industrial Production Index (IPI) is a short-term indicator that measures the monthly evolution of the productive activity of the industrial branches, excluding construction, contained in the National Classification of Economic Activities 2009 (CNAE-2009). It therefore investigates the activities included in sections B, C, D and division 36: Water collection, treatment and supply, from section E of the CNAE-2009.

The IPI measures the joint evolution of quantity and quality, eliminating the influence of prices.

Type of survey: monthly continuous survey.

Base year: 2015.

Population scope: industrial establishments whose main activity is included in sections B, C, D and division 36 of the CNAE-2009.

Geographical scope: the entire national territory.

Sample size: 11,500 industrial establishments and more than 1,100 products.

Collection method: completion of the questionnaire by the respondent using one of the following methods: internet (IRIA system), e-mail, fax, telephone or by postal mail.

For more information, the methodology can be accessed at:

<https://www.ine.es/daco/daco43/metoipi15.pdf>

And the standardised methodological report at:

<https://www.ine.es/dynt3/metadatos/es/RespuestaDatos.html?oe=30050>

INE statistics are produced in accordance with the Code of Good Practice for European Statistics, which is the basis for the institution's quality policy and strategy. For more information see the section on [Quality at INE and the Code of Best Practices](#) on the INE website.

For further information see **INEbase:** www.ine.es/en/ Twitter: [@es_ine](https://twitter.com/es_ine)

All press releases at: www.ine.es/en/prensa/prensa_en.htm

Press office: Telephone numbers: (+34) 91 583 93 63 /94 08 – gprensa@ine.es

Information Area: Telephone number: (+34) 91 583 91 00 – www.ine.es/infoine/?L=1

Industrial Production Index. 2015 Base

June 2023

Provisional data

1. Industrial Production Index: General and by economic destination adjusted for seasonal and calendar effects

	Index	Rate (%)		
		Monthly	Annual	Year-to-date average
General Index	104.5	-1.0	-3.0	-0.2
Consumer goods	107.8	-1.0	-1.2	0.6
- Durable consumer goods	106.7	-0.4	-5.1	-1.1
- Non-durable consumer goods	108.5	-0.8	-0.3	1.3
Capital goods	113.7	-1.2	2.6	6.2
Intermediate goods	104.0	0.0	-4.9	-3.5
Energy	94.9	-0.5	-9.8	-3.2

2. Industrial Production Index: General and by economic destination adjusted for seasonal and calendar effects

	Index	Rate (%)	
		Annual	Year-to-date average
General Index	109.8	-3.0	-0.2
Consumer goods	111.7	-1.2	0.6
- Durable consumer goods	115.8	-5.3	-1.0
- Non-durable consumer goods	111.6	-0.6	0.8
Capital goods	124.3	2.6	6.1
Intermediate goods	110.6	-4.8	-3.4
Energy	91.3	-9.8	-3.2

3. Industrial Production Index: General and by economic destination. Original series

	Index	Rate (%)		Repercussion Annual
		Annual	Year-to-date average	
General Index	111.9	-1.4	0.2	
Consumer goods	114.5	1.3	1.1	0.329
- Durable consumer goods	118.9	-3.3	-0.5	-0.071
- Non-durable consumer goods	114.1	1.7	1.2	0.400
Capital goods	127.2	4.6	6.6	1.107
Intermediate goods	112.8	-3.1	-3.0	-0.946
Energy	91.8	-9.5	-3.2	-1.860

**4. Industrial Production Index: General and by branches of activity (CNAE 2009).
Original series**

	Index	Rate (%)		Repercussion Annual
		Annual	Year-to-date average	
General Index	111.9	-1.4	0.2	
B. Mining and quarrying industries	90.6	-25.8	18.8	-0.193
Extraction of anthracite, coal and lignite
National crude petroleum and natural gas
Extraction of metallic ores
Other mining and quarrying	107.2	-26.3	19.9	-0.191
C. Manufacturing industry	116.9	0.5	0.7	0.437
Food Industry	104.8	-0.4	-1.9	-0.041
Manufacture of beverages.	121.0	-5.0	2.6	-0.184
Tobacco industry.
Textile industry	107.6	-6.2	-7.2	-0.068
Manufacture of garments	106.6	-15.6	-2.4	-0.160
Leather and footwear industry	79.2	-8.4	-6.9	-0.061
Manufacture of wood and of products of wood and cork, except furniture; basketmaking and wickerwork	114.4	-9.4	-19.6	-0.130
Manufacture of paper and paper-products	98.9	-9.8	-8.2	-0.232
Graphic arts and reproduction of recorded media	68.9	-12.7	-9.9	-0.145
Manufacture of coke and refined petroleum products	94.1	-11.1	-4.5	-0.247
Chemical Industry	108.1	-5.2	-7.3	-0.322
Manufacture of pharmaceutical products	160.1	18.7	10.4	0.811
Rubber and plastic material transformation industry	115.4	-5.3	-2.7	-0.258
Manufacture of other non-metallic ore products	117.3	-9.2	-6.5	-0.388
Metallurgy; manufacture of iron, steel and ferro-alloy products	95.0	-2.6	-3.7	-0.076
Manufacture of metal products, except machinery and equipment	119.4	-2.9	0.2	-0.244
Manufacture of computers, electronic and optical products	150.4	15.8	4.1	0.190
Manufacture of electrical material and equipment	144.9	15.5	13.7	0.480
Manufacture of machinery and equipment n.e.c.	147.1	-0.2	1.9	-0.011
Manufacture of motor vehicles, trailers and semi-trailers	116.2	11.8	14.3	0.883
Manufacture of other transport equipment	125.4	15.9	13.9	0.416
Manufacture of furniture.	127.1	-3.5	-1.8	-0.051
Other manufacturing industries	136.8	3.7	-2.1	0.047
Repair and installation of machinery and equipment	126.7	8.2	8.3	0.232
D. Supply of electrical energy, gas, steam and air conditioning	87.4	-9.8	-4.1	-1.385
E. Water supply, activities, waste management and decontamination*	116.8	-7.2	3.2	-0.228

* It only includes Water collection, treatment and supply

(..) Data not available due to statistical secrecy.

5. Industrial production index: national and by Autonomous Community. Original series

	Index	Rate (%)	
		Annual	Year-to-date average
National	111.9	-1.4	0.2
Andalucía	101.5	-6.3	-2.3
Aragón	118.2	-4.9	0.7
Asturias, Principado de	98.3	-9.1	-4.7
Balears, Illes	104.7	-1.1	-0.2
Canarias	99.3	8.0	6.6
Cantabria	110.1	-1.9	-2.9
Castilla y León	98.0	1.4	4.6
Castilla-La Mancha	106.7	-3.4	2.3
Cataluña	113.6	3.4	-0.1
Comunitat Valenciana	116.5	-4.6	-1.6
Extremadura	110.5	1.9	-0.2
Galicia	104.5	-4.8	4.3
Madrid, Comunidad de	122.5	4.2	4.9
Murcia, Región de	112.1	-13.2	-9.7
Navarra, Comunidad Foral de	126.0	-1.7	-2.1
País Vasco	116.3	-3.6	-1.5
Rioja, La	85.9	3.4	-2.5

More detailed information by Autonomous Community may be obtained at:

Andalucía	Andalusia Institute of Statistics and Cartography (juntadeandalucia.es)
Aragón	Aragon Institute of Statistics (IAEST). Government of Aragon
Principado de Asturias	Home - Asturian Society for Economic and Industrial Studies (sadei.es)
Illes Balears	IBESTAT Home (caib.es)
Canarias	Home ISTAC - Government of the Canary Islands
Cantabria	Cantabrian Institute of Statistics - ICANE
Castilla y León	Statistics Statistics Council of Castilla y León (icyle.es)
Castilla - La Mancha	Start: Statistics Service of Castilla-La Mancha (jccm.es)
Cataluña	Idescat. Statistics Institute of Catalonia
Comunitat Valenciana	Home - Statistical Portal of the Generalitat Valenciana - Generalitat Valenciana (gva.es)
Extremadura	IEEX - JUNTAEX
Galicia	IGE - Galician Institute of Statistics
Madrid	Statistical Portal. Community of Madrid
Región de Murcia	Statistical Portal of the Region of Murcia - CREM (carm.es)
La Rioja	Statistics - La Rioja Government Portal