

11 September 2020

Industrial Production Indices (IPI). Base 2015

July 2020. Provisional data

The monthly variation of the Industrial Production Index stands at 9.3%, after adjusting for seasonal and calendar effects

The annual rate of the Industrial Production Index stands at -6.4% in the series adjusted for seasonal and calendar effects and at -6.4% in the original series

COVID-19's Effects on the July IPI

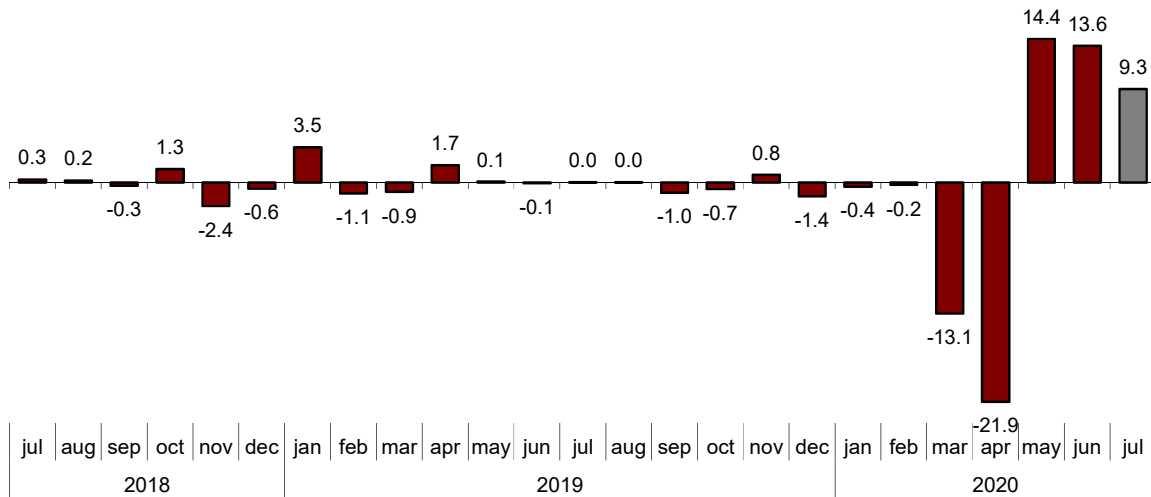
- Effects of COVID-19 on the IPI for the month of July
- From June 21 and in accordance with Royal Decree 555/2020, the state of alarm ends. With the new normality, the industry has continued to recover its rhythm in July with a monthly growth of 9.3%.
- The greatest dynamism compared to the previous month is observed in the Durable Consumer Goods industry (14.2%) and in Intermediate Goods (11.6%).
- In interannual terms, the industry registered a decrease in its production of 6.4%. The Leather and footwear industry (-31.4%) and the Manufacture of other transport material (-27.7%) registered the greatest decreases.
- For their part, the Extractive Industries (10.2%) and the Manufacture of pharmaceutical products (9.0%) increased their production compared to July 2019.
- Industrial production decreased in all autonomous communities compared to July 2019. The smallest decreases were recorded in Castilla y León (-0.1%) and Región de Murcia (-1.5%); while Illes Balears (-24.2%) and La Rioja (-18.4%) presented the greatest decreases.

Monthly evolution of industrial production

After adjusting for seasonal and calendar effects, the monthly variation of the Industrial Production Index (IPI) between June and July stood at 9.3%. This rate is 4.3 points lower than that observed in June.

General Industrial Production Index

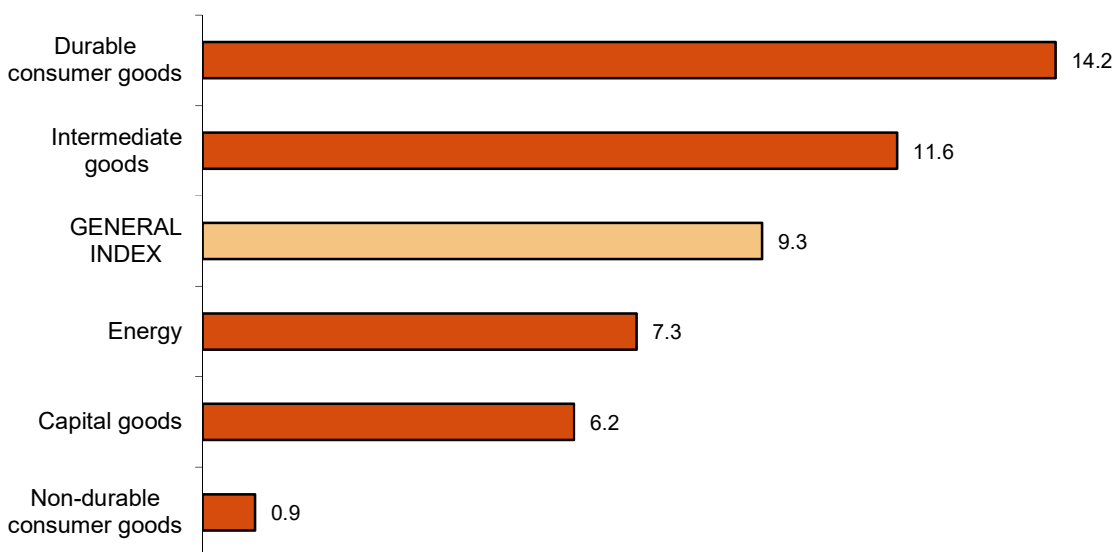
Adjusted for seasonal and calendar effects. Monthly rate (percentage)



All sectors showed positive monthly rates. It is worth highlighting the increase in *Durable consumer goods* (14.2%) followed by *Intermediate goods* (11.6%).

Industrial Production Indices: General and by economic destination

Adjusted for seasonal and calendar effects. July 2020. Monthly rate (percentage)



A more detailed analysis shows the branches of activity with the greatest and lowest monthly rates in the month of July.

Branches of activity with the highest monthly rates of the industrial production index adjusted for seasonal and calendar effects

Activity (Division from CNAE 2009)	Monthly rate (%)
Other manufacturing industries	20.8
Manufacture of motor vehicles, trailers and semi-trailers	19.8
Rubber and plastic material transformation industry	19.1

Branches of activity with the lowest monthly rates of the industrial production index adjusted for seasonal and calendar effects

Activity (Division from CNAE 2009)	Monthly rate (%)
Manufacture of other transport equipment	-6.4
Manufacture of machinery and equipment n.e.c.	0.3
Repair and installation of machinery and equipment	0.4

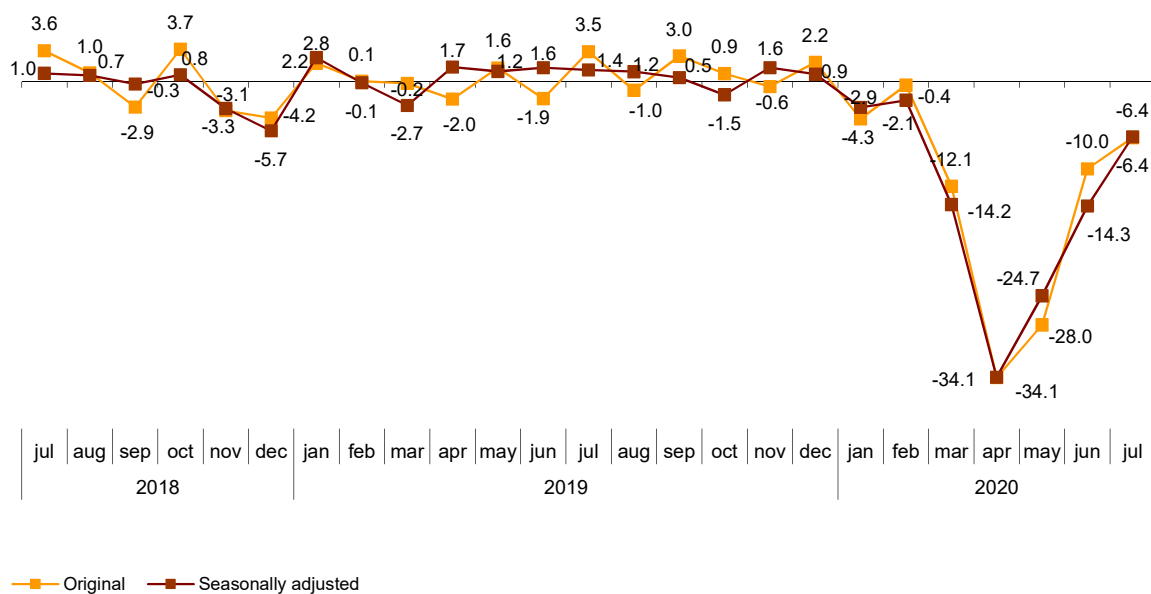
Annual evolution of industrial production

After adjusting for seasonal and calendar effects, the Industrial Production Index registered a variation of -6.4% in July, as compared with the same month of the previous year. This rate is 7.9 points higher than that registered in June.

The original IPI series experienced an annual variation of -6.4%. This rate is 3.6 points higher than that of June.

General Industrial Production Index

Annual rate (percentage)



All sectors showed negative annual rates. It is worth highlighting the decrease in *Capital goods* (-12.6%) followed by *Durable consumer goods* (-6.1%).

Annual rates of industrial production indices: General and by economic destination of the goods

	Original index Annual rate (%)	Seasonally adjusted index Annual rate (%)
General Index	-6.4	-6.4
Consumer goods	-3.9	-4.0
- Durable consumer goods	-6.3	-6.1
- Non-durable consumer goods	-3.7	-5.3
Capital goods	-12.1	-12.6
Intermediate goods	-5.0	-5.0
Energy	-5.0	-5.2

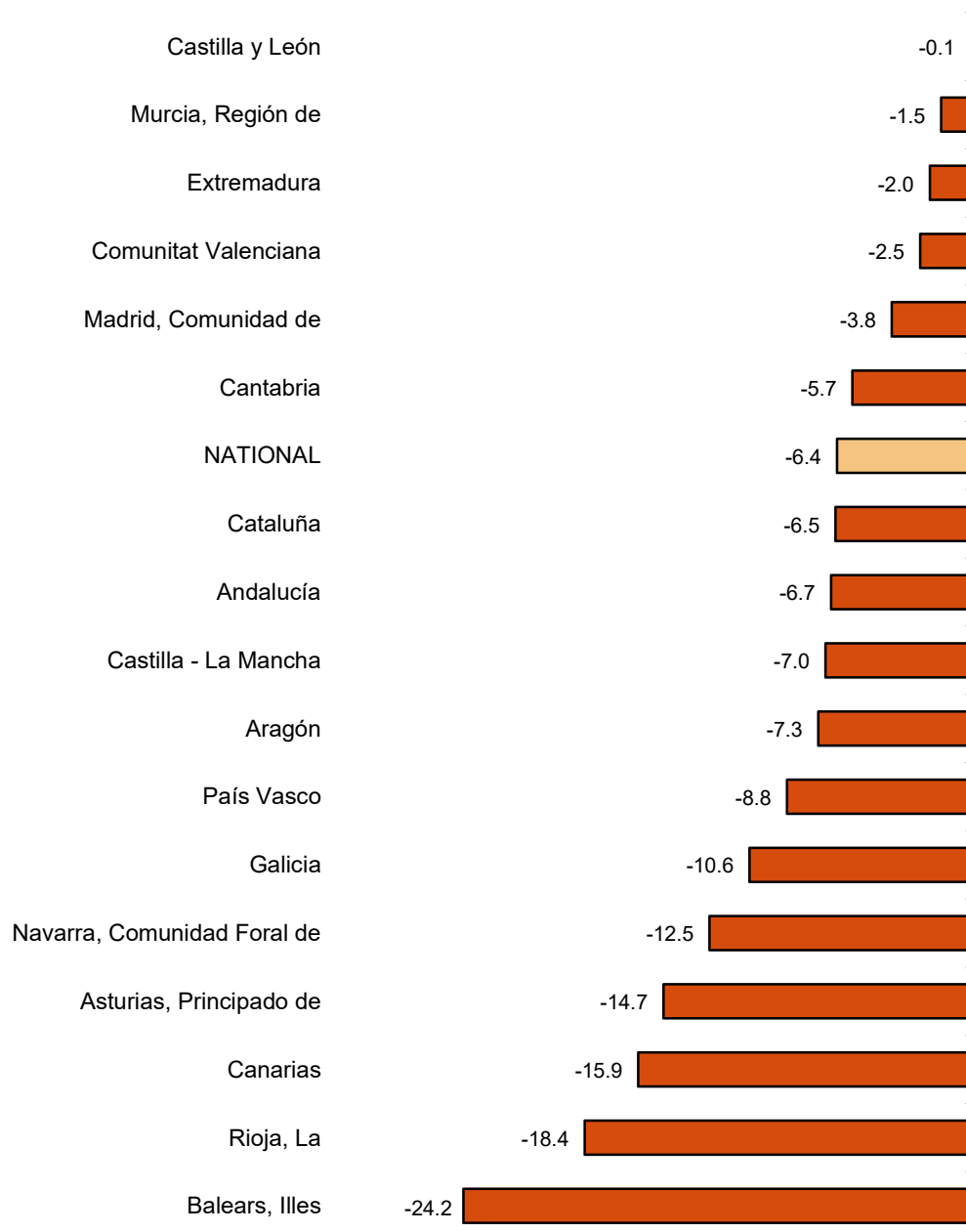
Results by Autonomous Communities. Annual variation rates of industrial production. Original series

In all the Autonomous Communities, the annual rate of industrial production decreased as compared to July 2019.

The largest decreases were recorded in Illes Balears (-24.2%), La Rioja (-18.4%) and Canarias (-15.9%).

General indices: national and by Autonomous Communities

July 2020. Annual rate (percentage)



Data Review and Update

Coinciding with today's publication, the INE has updated the data of the IPI series corresponding to the last two months. In the case of the series adjusted for calendar effects and for seasonal and calendar effects, the series is revised from the beginning, following the INE standard. The results are available at INEBase.

Methodological note

The **Industrial Production Index (IPI)** is a short-term indicator that measures the monthly evolution of the productive activity of the industrial branches, excluding construction, contained in the National Classification of Economic Activities 2009 (CNAE-2009). It therefore investigates the activities included in sections B, C, D and division 36: Water collection, treatment and supply, from section E of the CNAE-2009.

The IPI measures the joint evolution of quantity and quality, eliminating the influence of prices.

Type of survey: monthly continuous survey.

Base year: 2015.

Population scope: industrial establishments whose main activity is included in sections B, C, D and division 36 of the CNAE-2009.

Geographical scope: the entire national territory.

Sample size: 11,500 industrial establishments and more than 1,100 products.

Collection method: completion of the questionnaire by the respondent using one of the following methods: internet (IRIA system), e-mail, fax, telephone or by postal mail.

For more information you can access the methodology at:

https://www.ine.es/en/daco/daco43/metoipi15_en.pdf

And the standardised methodological report at:

<https://www.ine.es/dynt3/metadatos/en/RespuestaDatos.html?oe=30050>

For further information see **INEbase:** www.ine.es/en/ Twitter: [@es_ine](https://twitter.com/es_ine)

All press releases at: www.ine.es/en/prensa/prensa_en.htm

Press Office: Telephone numbers: (+34) 91 583 93 63 /94 08 – gprensa@ine.es

Information Area: Telephone number: (+34) 91 583 91 00 – www.ine.es/infoine/?L=1

Industrial Production Indices. Base 2015

July 2020

Provisional Data

1. Industrial Production Indices: General and by economic destination adjusted for seasonal and calendar effects

	Index	Rate (%)		
		Monthly	Annual	Year-to-date average
General Index	100.1	9.3	-6.4	-14.1
Consumer goods	99.9	6.8	-4.0	-10.0
- Durable consumer goods	98.6	14.2	-6.1	-23.6
- Non-durable consumer goods	98.0	0.9	-5.3	-8.5
Capital goods	98.6	6.2	-12.6	-22.5
Intermediate goods	102.8	11.6	-5.0	-13.9
Energy	95.4	7.3	-5.2	-9.2

2. Industrial Production Indices: General and by economic destination adjusted for seasonal and calendar effects

	Index	Rate (%)	
		Annual	Year-to-date average
General Index	104.6	-6.8	-14.2
Consumer goods	103.7	-4.2	-10.1
- Durable consumer goods	107.9	-6.8	-23.6
- Non-durable consumer goods	103.6	-4.1	-8.9
Capital goods	104.8	-12.7	-22.8
Intermediate goods	106.3	-5.5	-13.9
Energy	103.6	-5.1	-9.1

3. Industrial Production Indices: General and by economic destination. Original series

	Index	Rate (%)		Repercussion Annual
		Annual	Year-to-date average	
General Index	107.3	-6.4	-13.6	
Consumer goods	107.0	-3.9	-9.7	-0.986
- Durable consumer goods	111.9	-6.3	-22.9	-0.132
- Non-durable consumer goods	106.6	-3.7	-8.6	-0.854
Capital goods	108.2	-12.1	-22.1	-2.895
Intermediate goods	109.1	-5.0	-13.4	-1.505
Energy	104.4	-5.0	-8.5	-1.045

**4. Industrial Production Indices: General and by branches of activity (CNAE 2009).
Original series**

	Index	Rate (%)		Repercussion
		Annual	Year-to-date average	Annual
General Index	107.3	-6.4	-13.6	
B. Mining and quarrying industries	109.2	10.2	-6.1	0.061
Extraction of anthracite, coal and lignite
National crude petroleum and natural gas
Extraction of metallic ores
Other mining and quarrying	121.2	3.2	-14.3	0.019
C. Manufacturing industry	107.4	-7.3	-15.0	-5.888
Food Industry	100.5	-4.7	-6.3	-0.514
Manufacture of beverages.	121.4	-2.2	-11.2	-0.079
Tobacco industry.
Textile industry	112.5	1.4	-19.5	0.015
Manufacture of garments	110.7	-23.9	-35.8	-0.280
Leather and footwear industry	75.7	-31.4	-27.8	-0.285
Manufacture of wood and of products of wood and cork, except furniture; basketmaking and wickerwork	113.0	-7.1	-20.3	-0.094
Manufacture of paper and paper-products	97.3	-8.6	-4.7	-0.196
Graphic arts and reproduction of recorded media	63.0	-14.0	-23.6	-0.147
Manufacture of coke and refined petroleum products	86.5	-19.6	-15.9	-0.440
Chemical Industry	113.9	-1.3	-5.4	-0.082
Manufacture of pharmaceutical products	131.9	9.0	2.7	0.345
Rubber and plastic material transformation industry	116.2	1.9	-14.7	0.085
Manufacture of other non-metallic ore products	113.0	-5.7	-16.2	-0.220
Metallurgy; manufacture of iron, steel and ferro-alloy products	92.4	-12.2	-18.8	-0.384
Manufacture of metal products, except machinery and equipment	115.2	-10.8	-19.2	-0.956
Manufacture of computers, electronic and optical products	124.3	-3.1	-5.5	-0.037
Manufacture of electrical material and equipment	113.1	-2.0	-7.3	-0.056
Manufacture of machinery and equipment n.e.c.	120.6	-7.1	-14.6	-0.369
Manufacture of motor vehicles, trailers and semi-trailers	98.4	-9.4	-31.4	-0.726
Manufacture of other transport equipment	96.8	-27.7	-21.6	-0.886
Manufacture of furniture.	120.7	-7.0	-25.9	-0.101
Other manufacturing industries	117.0	-14.2	-28.3	-0.186
Repair and installation of machinery and equipment	103.9	-10.7	-15.8	-0.298
D. Supply of electrical energy, gas, steam and air conditioning	100.9	-2.6	-7.8	-0.384
E. Water supply, activities, waste management and decontamination*	141.7	-5.9	-6.2	-0.221

* It only includes Water collection, treatment and supply

(..) Data not available due to statistical secrecy.

5. Industrial production indices: national and by Autonomous Community. Original series

	Index	Rate (%)	
		Annual	Year-to-date average
National	107.3	-6.4	-13.6
Andalucía	104.7	-6.7	-15.2
Aragón	108.4	-7.3	-16.1
Asturias, Principado de	89.5	-14.7	-16.5
Balears, Illes	81.1	-24.2	-24.0
Canarias	88.3	-15.9	-11.9
Cantabria	106.1	-5.7	-15.5
Castilla y León	99.8	-0.1	-15.4
Castilla-La Mancha	104.7	-7.0	-12.1
Cataluña	108.0	-6.5	-14.2
Comunitat Valenciana	115.7	-2.5	-11.7
Extremadura	102.2	-2.0	-11.6
Galicia	101.2	-10.6	-14.3
Madrid, Comunidad de	113.2	-3.8	-10.5
Murcia, Región de	139.5	-1.5	-4.2
Navarra, Comunidad Foral de	98.5	-12.5	-13.3
País Vasco	107.1	-8.8	-16.7
Rioja, La	81.9	-18.4	-16.2

More detailed information by Autonomous Community may be obtained at:

Andalucía	www.juntadeandalucia.es/institutodeestadisticaycartografia
Aragón	www.aragon.es/iaest/jpi
Principado de Asturias	www.sadei.es
Illes Balears	www.ibestat.caib.es
Canarias	www.gobiernodecanarias.org/istac
Cantabria	www.icane.es
Castilla y León	www.jcyl.es/estadistica
Castilla - La Mancha	www.jccm.es/estadistica
Cataluña	www.idescat.cat
Comunitat Valenciana	www.ive.es
Extremadura	http://estadistica.juntaex.es
Galicia	www.ige.xunta.es
Comunidad de Madrid	www.madrid.org/iestadis
Región de Murcia	http://econet.carm.es
La Rioja	www.larioja.org