

Industrial Production Indices (IPI). Base 2015
July 2021. Provisional data

The monthly variation of the Industrial Production Index is -1.1% after adjusting for seasonal and calendar effects

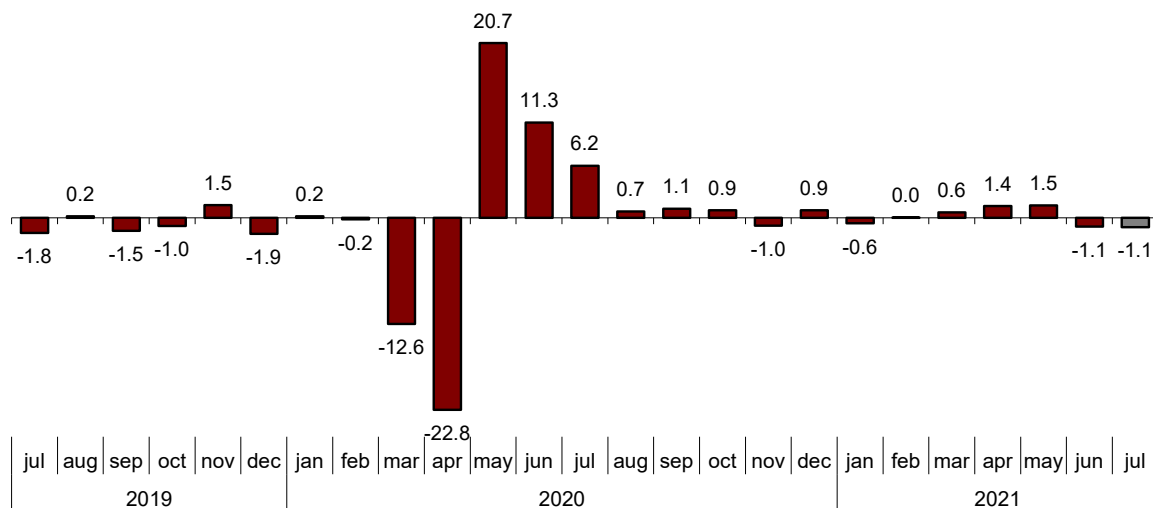
The annual rate of the Industrial Production Index stands at 3.4% in the series adjusted for seasonal and calendar effects and at 0.4% in the original series

Monthly evolution of industrial production

After adjusting for seasonal and calendar effects, the monthly variation of the Industrial Production Index (IPI) between June and July stood at -1.1%. This rate is the same as that observed in June.

General Industrial Production Index

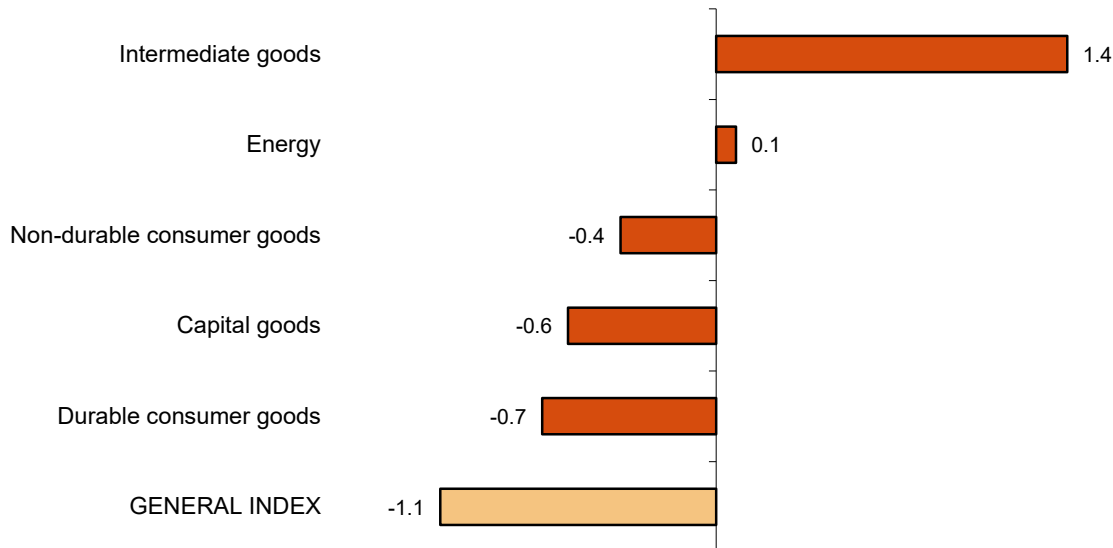
Adjusted for seasonal and calendar effects. Monthly rate (percentage)



By sectors, *Intermediate goods* (1.4%) and *Energy* (0.1%) showed positive monthly rates. On the other hand *Durable consumer goods* (-1.1%), *Capital goods* (-0.7%) and *Non-durable consumer goods* (-0.6%) showed negative monthly rates.

Industrial Production Indices: General and by economic destination

Adjusted for seasonal and calendar effects July 2021. Monthly rate (percentage)



A more detailed analysis shows the branches of activity with the greatest and lowest monthly rates in the month of July.

Branches of activity with the highest monthly rates of the industrial production index adjusted for seasonal and calendar effects

Activity (Division from CNAE 2009)	Monthly rate (%)
Other mining and quarrying	30.4
Manufacture of coke and refined petroleum products	9.5
Manufacture of motor vehicles, trailers and semi-trailers	8.6

Branches of activity with the lowest monthly rates of the industrial production index adjusted for seasonal and calendar effects

Activity (Division from CNAE 2009)	Monthly rate (%)
Manufacture of garments	-29.1
Manufacture of machinery and equipment n.e.c.	-12.4
Manufacture of beverages	-10.7

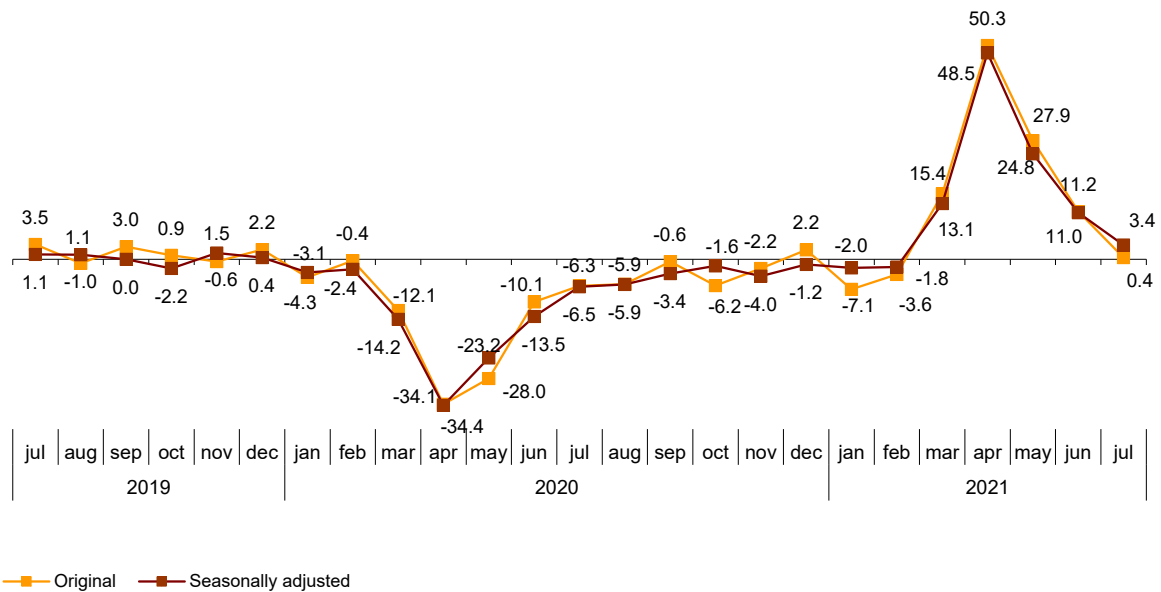
Annual evolution of industrial production

After adjusting for seasonal and calendar effects, the Industrial Production Index registered a variation of 3.4% in July, as compared with the same month of the previous year. This rate is 7.6 points lower than that registered in June.

The original IPI series experienced an annual variation of 0.4%. This rate is 10.8 points lower than that of June.

General Industrial Production Index

Annual rate (percentage)



By sectors, *Durable consumer goods* (11.1%), *Intermediate goods* (9.2%) and *Non-durable consumer goods* (3.9%) showed positive annual rates. On the other hand, *Energy* (-3.7%) and *Capital goods* (-1.9%) showed negative annual rates.

Annual rates of industrial production indices: General and by economic destination of the goods

	Original index Annual rate (%)	Seasonally adjusted index Annual rate (%)
General Index	0.4	3.4
Consumer goods	2.0	5.2
- Durable consumer goods	7.4	11.1
- Non-durable consumer goods	1.5	3.9
Capital goods	-5.3	-1.9
Intermediate goods	6.7	9.2
Energy	-4.5	-3.7

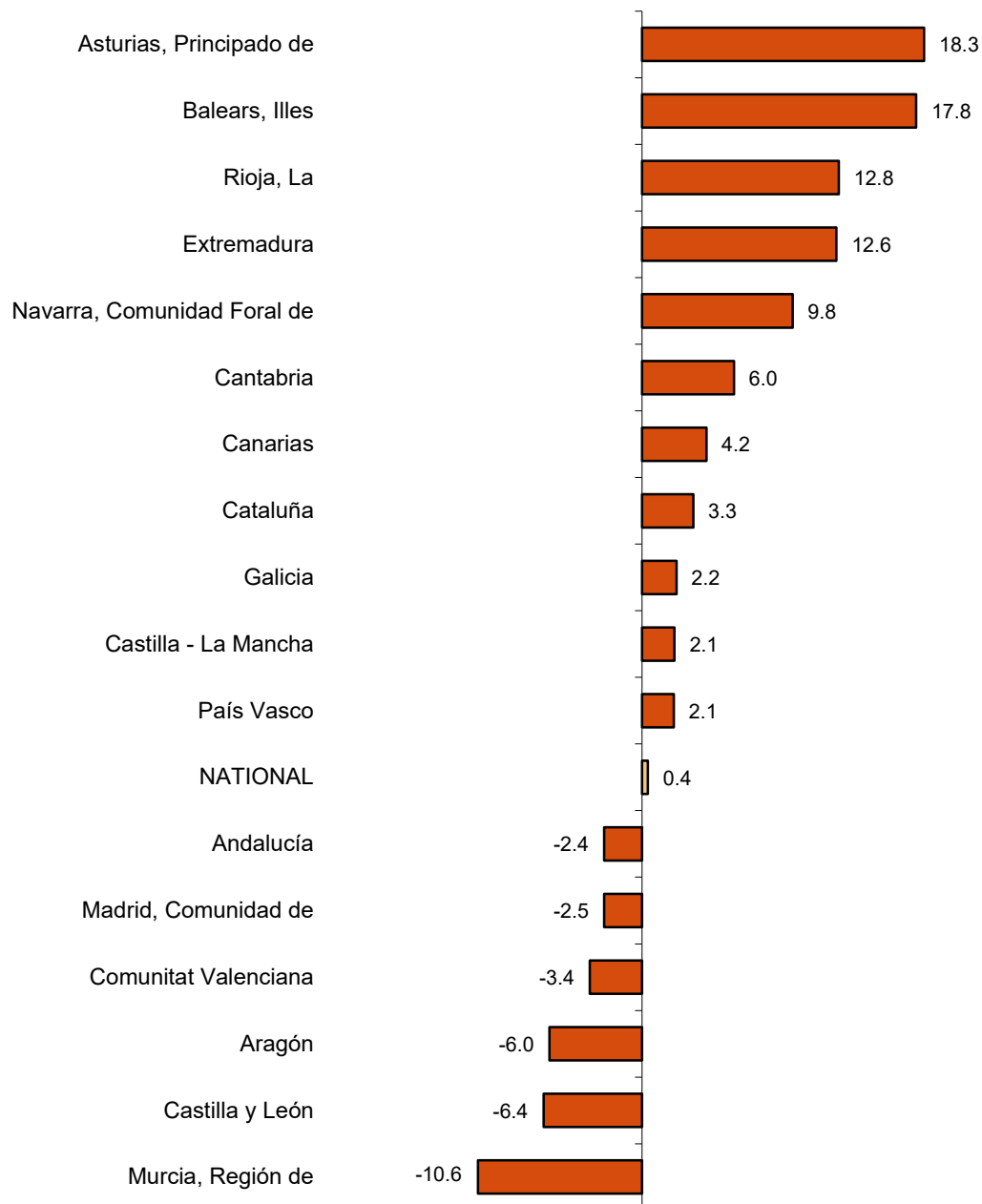
Results by Autonomous Communities. Annual variation rates of industrial production. Original series

The annual rate of industrial production increased as compared to July 2020 in 11 Autonomous Communities and decreased in the other six.

The largest increases were recorded in Principado de Asturias (18.3%), Illes Balears (17.8%) and La Rioja (12.8%). The largest decreases were recorded in Región de Murcia (-10.6%), Castilla y León (-6.4%) and Aragón (-6.0%).

General indices: national and by Autonomous Communities

July 2021. Annual rate (percentage)



Data Review and Update

Coinciding with today's publication, the INE has updated the data of the IPI series corresponding to the last two months. In the case of the series adjusted for calendar effects and for seasonal and calendar effects, the series is revised from the beginning, following the INE standard. The results are available at INEBase.

Methodological note

The Industrial Production Index (IPI) is a short-term indicator that measures the monthly evolution of the productive activity of the industrial branches, excluding construction, contained in the National Classification of Economic Activities 2009 (CNAE-2009). It therefore investigates the activities included in sections B, C, D and division 36: Water collection, treatment and supply, from section E of the CNAE-2009.

The IPI measures the joint evolution of quantity and quality, eliminating the influence of prices.

Type of survey: monthly continuous survey.

Base year: 2015.

Population scope: industrial establishments whose main activity is included in sections B, C, D and division 36 of the CNAE-2009.

Geographical scope: the entire national territory.

Sample size: 11,500 industrial establishments and more than 1,100 products.

Collection method: completion of the questionnaire by the respondent using one of the following methods: internet (IRIA system), e-mail, fax, telephone or by postal mail.

For more information the methodology can be accessed at:

https://www.ine.es/en/daco/daco43/metoipi15_en.pdf

And the standardised methodological report at:

<https://www.ine.es/dynt3/metadatos/en/RespuestaDatos.html?oe=30050>

INE statistics are produced in accordance with the Code of Good Practice for European Statistics, which is the basis for the institution's quality policy and strategy. For more information see the section on [Quality at INE and the Code of Best Practices](#) on the INE website.

For further information see **INEbase:** www.ine.es/en/ Twitter: [@es_ine](https://twitter.com/es_ine)

All press releases at: www.ine.es/en/prensa/prensa_en.htm

Press Office: Telephone numbers: (+34) 91 583 93 63 /94 08 – gprensa@ine.es

Information Area: Telephone number: (+34) 91 583 91 00 – www.ine.es/infoine/?L=1

Industrial Production Indices. Base 2015

July 2021

Provisional Data

1. Industrial Production Indices: General and by economic destination adjusted for seasonal and calendar effects

	Index	Rate (%)		
		Monthly	Annual	Year-to-date average
General Index	102.9	-1.1	3.4	11.8
Consumer goods	103.6	-0.9	5.2	8.5
- Durable consumer goods	107.1	-0.7	11.1	32.0
- Non-durable consumer goods	102.1	-0.4	3.9	6.5
Capital goods	99.5	-0.6	-1.9	15.2
Intermediate goods	112.4	1.4	9.2	16.7
Energy	92.5	0.1	-3.7	4.6

2. Industrial Production Indices: General and by economic destination adjusted for seasonal and calendar effects

	Index	Rate (%)	
		Annual	Year-to-date average
General Index	107.9	3.1	11.8
Consumer goods	109.3	5.5	8.6
- Durable consumer goods	119.4	11.7	31.7
- Non-durable consumer goods	108.4	4.6	6.9
Capital goods	103.9	-2.2	15.3
Intermediate goods	115.4	9.4	16.8
Energy	100.1	-3.7	4.4

3. Industrial Production Indices: General and by economic destination. Original series

	Index	Rate (%)		Repercussion Annual
		Annual	Year-to-date average	
General Index	107.9	0.4	11.0	
Consumer goods	109.1	2.0	8.0	0.521
- Durable consumer goods	119.3	7.4	30.6	0.154
- Non-durable consumer goods	108.3	1.5	6.3	0.367
Capital goods	103.9	-5.3	14.3	-1.206
Intermediate goods	115.5	6.7	16.2	2.020
Energy	100.2	-4.5	3.7	-0.946

**4. Industrial Production Indices: General and by branches of activity (CNAE 2009).
Original series**

	Index	Rate (%)		Repercussion Annual
		Annual	Year-to-date average	
General Index	107.9	0.4	11.0	
B. Mining and quarrying industries	129.3	18.5	12.3	0.131
Extraction of anthracite, coal and lignite
National crude petroleum and natural gas
Extraction of metallic ores
Other mining and quarrying	154.2	27.3	24.5	0.174
C. Manufacturing industry	109.6	1.9	12.6	1.559
Food Industry	103.5	3.8	3.0	0.419
Manufacture of beverages.	118.3	-2.4	11.5	-0.087
Tobacco industry.
Textile industry	109.5	-4.4	20.7	-0.051
Manufacture of garments	121.2	10.0	33.6	0.095
Leather and footwear industry	81.4	3.2	6.8	0.022
Manufacture of wood and of products of wood and cork, except furniture; basketmaking and wickerwork	122.5	9.2	24.0	0.120
Manufacture of paper and paper-products	108.0	12.0	6.6	0.265
Graphic arts and reproduction of recorded media	64.2	1.6	10.2	0.016
Manufacture of coke and refined petroleum products	102.5	18.5	1.1	0.354
Chemical Industry	117.3	4.1	9.3	0.264
Manufacture of pharmaceutical products	135.8	-0.1	4.7	-0.007
Rubber and plastic material transformation industry	114.0	-0.3	18.5	-0.017
Manufacture of other non-metallic ore products	123.8	9.7	23.7	0.379
Metallurgy; manufacture of iron, steel and ferro-alloy products	103.7	13.9	20.5	0.403
Manufacture of metal products, except machinery and equipment	119.0	6.3	16.8	0.517
Manufacture of computers, electronic and optical products	130.3	4.2	9.0	0.051
Manufacture of electrical material and equipment	114.7	-0.8	15.0	-0.025
Manufacture of machinery and equipment n.e.c.	131.8	9.1	19.3	0.469
Manufacture of motor vehicles, trailers and semi-trailers	74.1	-24.8	17.8	-1.852
Manufacture of other transport equipment	108.3	0.6	0.5	0.016
Manufacture of furniture.	132.3	12.0	34.0	0.168
Other manufacturing industries	127.3	6.4	28.1	0.079
Repair and installation of machinery and equipment	104.9	-1.9	7.8	-0.052
D. Supply of electrical energy, gas, steam and air conditioning	93.6	-7.6	4.5	-1.175
E. Water supply, activities, waste management and decontamination*	137.6	-3.3	1.3	-0.126

* It only includes Water collection, treatment and supply

(..) Data not available due to statistical secrecy.

5. Industrial production indices: national and by Autonomous Community. Original series

	Index	Rate (%)	
		Annual	Year-to-date average
National	107.9	0.4	11.0
Andalucía	102.0	-2.4	6.4
Aragón	102.8	-6.0	10.5
Asturias, Principado de	104.3	18.3	16.9
Balears, Illes	96.5	17.8	7.3
Canarias	92.3	4.2	1.5
Cantabria	111.1	6.0	17.5
Castilla y León	92.7	-6.4	12.3
Castilla-La Mancha	108.1	2.1	6.8
Cataluña	112.3	3.3	13.0
Comunitat Valenciana	111.3	-3.4	12.1
Extremadura	119.8	12.6	15.7
Galicia	104.0	2.2	15.4
Madrid, Comunidad de	111.3	-2.5	7.7
Murcia, Región de	121.5	-10.6	1.5
Navarra, Comunidad Foral de	109.8	9.8	16.6
País Vasco	108.5	2.1	12.4
Rioja, La	91.4	12.8	11.1

More detailed information by Autonomous Community may be obtained at:

Andalucía	www.juntadeandalucia.es/institutodeestadisticaycartografia
Aragón	www.aragon.es/iaest/ipi
Principado de Asturias	www.sadei.es
Illes Balears	www.ibestat.caib.es
Canarias	www.gobiernodecanarias.org/istac
Cantabria	www.icane.es
Castilla y León	www.jcyl.es/estadistica
Castilla - La Mancha	www.jccm.es/estadistica
Cataluña	www.idescat.cat
Comunitat Valenciana	www.ive.es
Extremadura	http://estadistica.juntaex.es
Galicia	www.ige.xunta.es
Comunidad de Madrid	www.madrid.org/iestadis
Región de Murcia	http://econet.carm.es
La Rioja	www.larioja.org