

Industrial Production Index (IPI). Base 2005
August 2010. *Provisional Data*

Main Results

- The **Industrial Production Index** experiences an **interannual variation** in **August** of **3.2%**, five-and-a-half points above that registered in July.
- By economic destination of the goods, **all the sectors present positive interannual rates, except Capital goods**.
- The **average rate** of the IPI stands at **1.5%** in the first eight months of the year.
- Industrial production registers **positive interannual rates in 12 Autonomous Communities** in the month of August.

Annual evolution of Industrial Production

The Industrial Production Index (IPI) experienced an interannual variation of **3.2%** in August, five-and-a-half points above that registered in July. Taking July and August together, these being the months in which industries concentrated their holidays period, industrial production decreased 0.1% as compared with the same period the previous year.

By economic destination of the goods, the industrial sectors that most influenced the interannual decrease in industrial production in August were:

- **Intermediate goods**, with an annual rate of **6.5%** and an effect of **2.074** on the general index, due to the generalised increases in the majority of activities composed by this sector. Worth noting were the increases registered in *Manufacture of basic chemical products, nitrogen compounds, fertilisers, plastics and synthetic rubber in primary form* and *Manufacture of other chemical products*.
- **Non-durable consumer goods**, with an annual rate of **5.3%** and an effect of **1.606** on the general index, caused by the increases observed in the majority of activities in this sector. Among these, worth noting was *Manufacture of other food products*.

In turn, the **Capital goods** sector was the only one to have a negative influence on the general index, with an annual variation of **-8.1%** and an effect of **-1.269** due to the evolution of *Manufacture of metal elements for construction* and *Manufacture of motor vehicles*.

A more detailed analysis showed the activities that most affected the annual rate of the IPI in the month of August.

Activities with the greatest positive effect on the annual rate of the general index

Activity: CNAE 2009 Group	Annual rate (%)	Effect
Petroleum refinement	9.7	0.481
Manufacture of basic chemical products, nitrogen compounds, fertilisers, plastics and synthetic rubber in primary forms	13.6	0.433
Manufacture of other food products	15.5	0.432
Manufacture of other chemical products	18.8	0.327

Activities with the greatest negative effect on the annual rate of the overall index

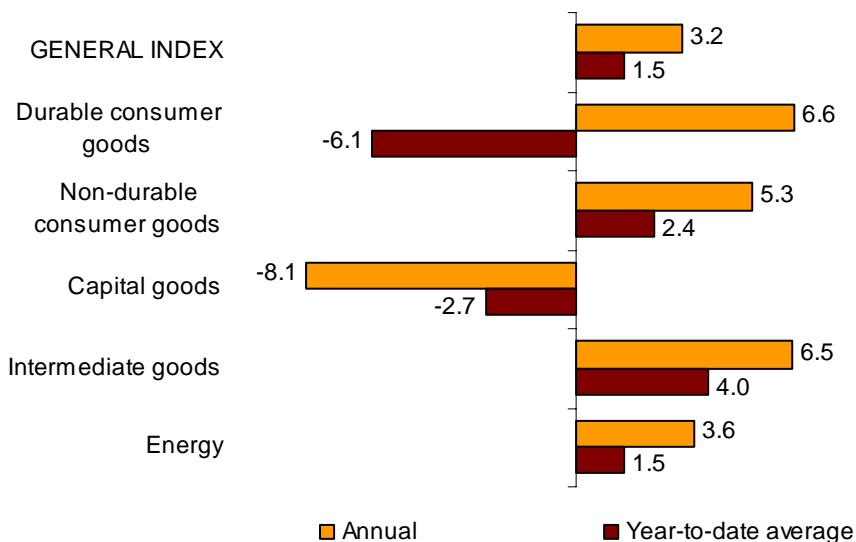
Activity: CNAE 2009 Group	Annual rate (%)	Effect
Manufacture of metal elements for construction	-16.2	-0.622
Manufacture of motor vehicles	-21.1	-0.383
Manufacture of elements made of concrete, cement and plaster	-18.0	-0.295
Manufacture of knitted and crocheted garments	-30.1	-0.219

Year-to-date average rates

The average for the Industrial Production Index registered a variation rate of **1.5%** in the first eight months of the year, as compared with the same period the previous year.

By economic destination of the goods, this rate was positive for Intermediate goods (4.0%), Non-durable consumer goods (2.4%) and Energy (1.5%). Conversely, it was negative in Durable consumer goods (-6.1%) and in Capital goods (-2.7%).

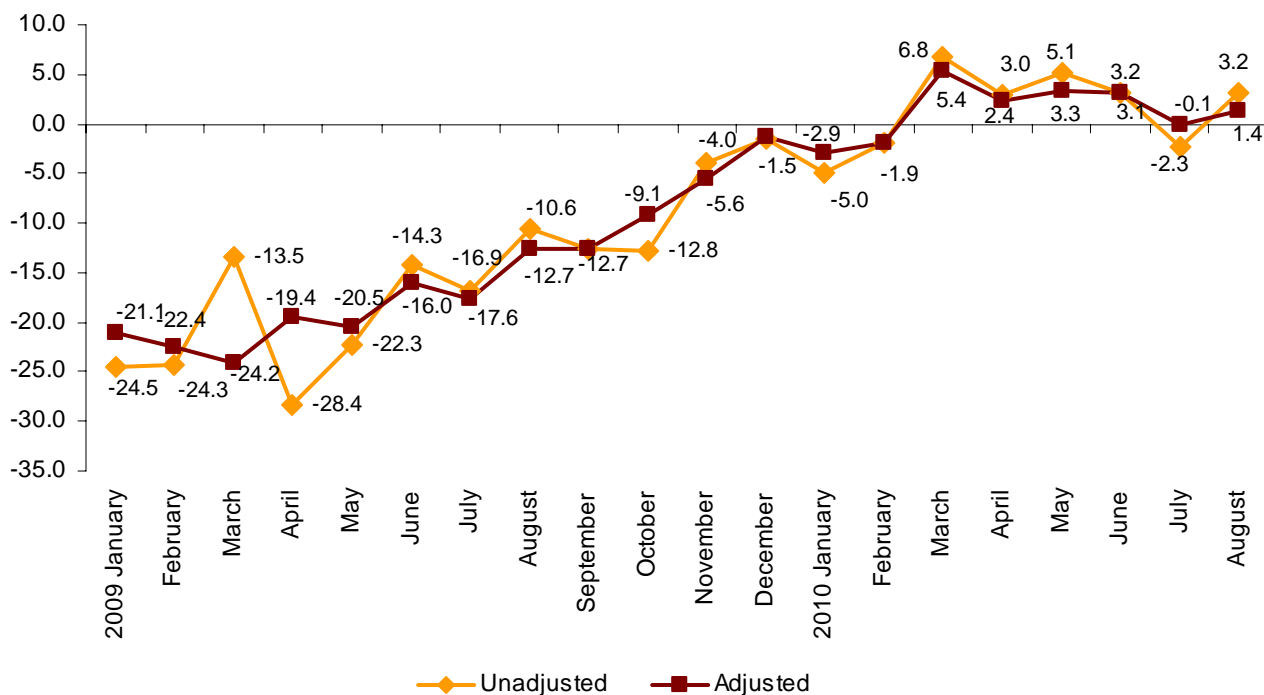
Annual and average rates of the IPI General index and by economic destination



Evolution of the IPI, adjusted for the calendar effect

After correcting the calendar effect, that is, the difference between the number of working days in a given month in different years, the interannual variation of the IPI in the month of August was **1.4%**, one-and-a-half points higher than that registered in July. The average for the indices for July and August, adjusted for calendar effect, registered a variation rate of 0.5% as compared with same period the previous year.

Annual evolution of the IPI General index, adjusted and unadjusted

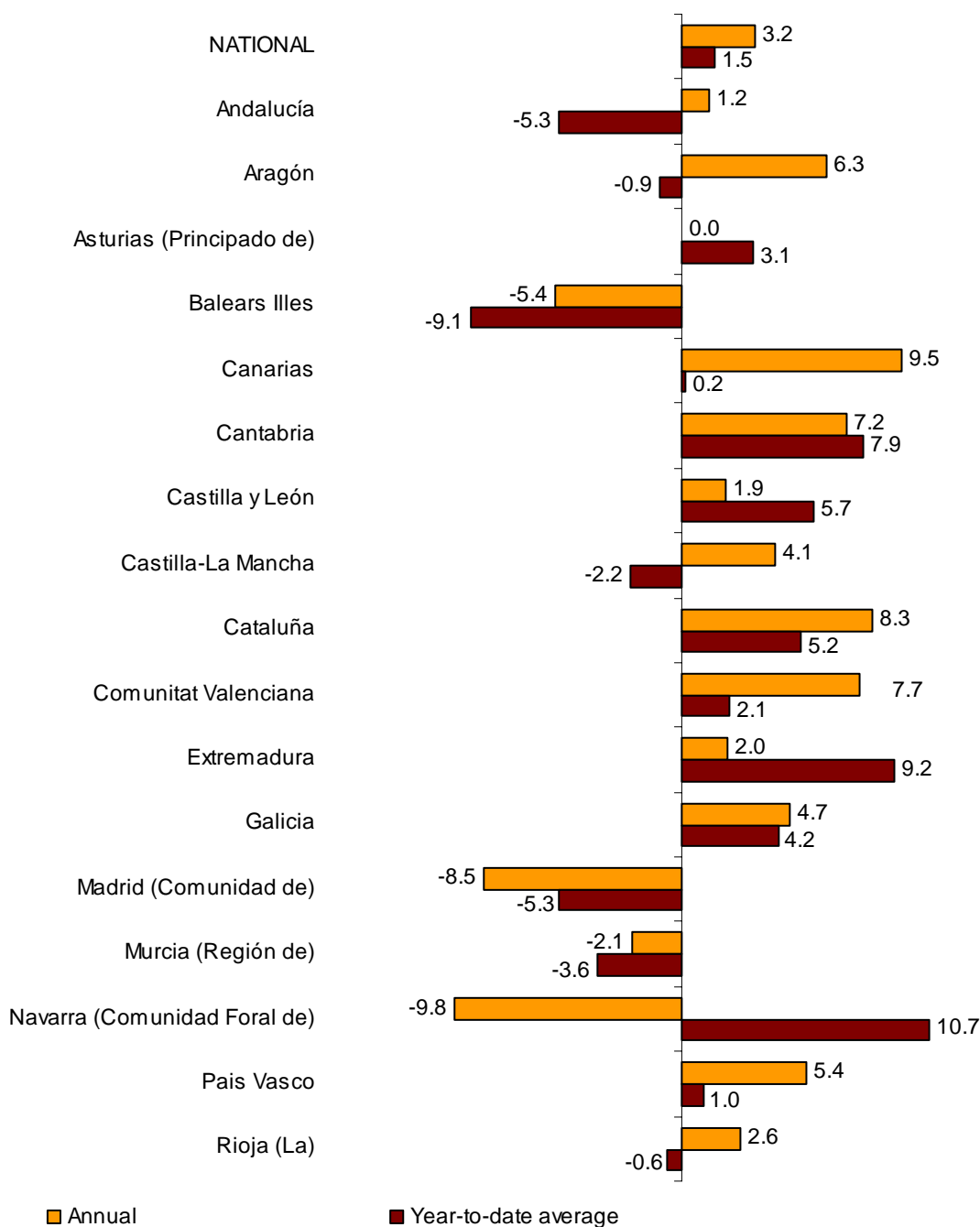


Results by Autonomous Community

A total of 12 Autonomous Communities registered positive interannual variations in August, among which, of note were Canarias (9.5%) and Cataluña (8.3%). In turn, Comunidad Foral de Navarra (-9.8%) and Comunidad de Madrid (-8.5%) presented the highest negative annual rate.

Annual and average rates of the IPI

General index by Autonomous Community



Industrial Production Index. Base 2005

August 2010

Provisional data

1. Clasification by economic destination of the goods¹

	Index	% variation	
		Annual	Year-to-date average
GENERAL INDEX	63.8	3.2	1.5
Consumer goods	73.9	5.4	1.5
Durable consumer goods	34.0	6.6	-6.1
Non-durable consumer goods	81.2	5.3	2.4
Capital goods	43.4	-8.1	-2.7
Intermediate goods	56.0	6.5	4.0
Energy	96.1	3.6	1.5

¹ Commission Regulation (EC) n° 656/2007

2. Series adjusted for calendar effects

	Index	% variation	
		Annual	Year-to-date average
GENERAL INDEX	63.0	1.4	1.3
Consumer goods	72.9	3.1	1.3
Durable consumer goods	33.4	3.4	-6.4
Non-durable consumer goods	80.1	3.1	2.3
Capital goods	42.7	-9.9	-2.9
Intermediate goods	55.3	4.5	3.8
Energy	95.5	3.0	1.5

3. Interannual rates. General index and by economic destination of the goods ¹

Period	General index		Consumer goods		Durable consumer goods		Non-durable consumer goods	
	Original	Adjusted ¹	Original	Adjusted ¹	Original	Adjusted ¹	Original	Adjusted ¹
2009 August	-10.6	-12.7	-5.7	-8.3	-30.8	-34.5	-2.9	-5.4
September	-12.7	-12.7	-5.3	-5.3	-25.1	-25.1	-1.8	-1.9
October	-12.8	-9.1	-9.8	-5.0	-27.6	-21.2	-6.6	-2.1
November	-4.0	-5.6	1.3	-0.8	-13.3	-16.2	3.6	1.6
December	-1.5	-1.4	0.9	1.0	-6.3	-6.2	1.9	2.0
2010 January	-5.0	-2.9	-5.1	-2.4	-21.5	-17.8	-3.1	-0.5
February	-1.9	-1.9	-3.1	-3.1	-12.4	-12.4	-1.9	-1.9
March	6.8	5.4	8.5	6.5	-2.9	-5.6	10.1	8.1
April	3.0	2.4	4.4	3.7	-7.9	-8.9	6.2	5.6
May	5.1	3.3	4.0	1.6	-3.0	-6.1	4.8	2.5
June *	3.2	3.1	2.1	2.1	6.2	6.0	1.6	1.5
July *	-2.3	-0.1	-3.2	-0.5	-6.8	-3.1	-2.7	-0.2
August *	3.2	1.4	5.4	3.1	6.6	3.4	5.3	3.1

Period	Capital goods		Intermediate goods		Energy	
	Original	Adjusted ¹	Original	Adjusted ¹	Original	Adjusted ¹
2009 August	-11.1	-13.2	-16.9	-19.1	-6.7	-7.5
September	-17.5	-17.4	-17.7	-17.7	-7.1	-7.1
October	-16.4	-12.7	-14.9	-11.0	-8.0	-6.7
November	-8.0	-9.6	-3.7	-5.5	-10.2	-10.7
December	-8.4	-8.2	4.8	4.9	-8.1	-8.1
2010 January	-7.0	-4.9	-3.3	-1.1	-5.7	-5.0
February	-3.5	-3.5	1.1	1.1	-3.6	-3.6
March	2.0	0.8	8.0	6.3	7.7	7.6
April	-4.8	-5.8	8.4	7.8	-0.3	-0.9
May	0.7	-1.1	9.7	7.8	2.0	1.5
June *	1.9	1.7	4.6	4.6	4.1	4.1
July *	-5.8	-3.8	-2.4	-0.1	5.7	6.4
August *	-8.1	-9.9	6.5	4.5	3.6	3.0

¹ Index rates adjusted for calendar effects

* Data revised

4. General Index and classification by activity (CNAE 2009)

	Index	% variation	
		Annual	Year-to-date average
GENERAL INDEX	63.8	3.2	1.5
B. Mining and quarrying	64.7	14.1	6.5
Mining of coal and lignite	68.7	13.2	15.7
Other mining and quarrying	63.2	14.5	2.8
C. Manufacturing	60.4	3.4	1.3
Manufacture of food products	96.9	6.5	1.8
Manufacture of beverages	92.3	-1.0	-5.6
Manufacture of tobacco products	42.6	-0.7	-0.7
Manufacture of textiles	25.0	8.2	10.7
Manufacture of wearing apparel	69.2	4.1	-8.5
Manufacture of leather and related products	51.7	18.3	0.3
Wood and cork industry, except furniture, basketmaking and esparto	27.5	-3.5	-8.0
Manufacture of paper and paper products	77.4	10.6	6.8
Printing and reproduction of recorded media	67.6	5.5	0.4
Manufacture of coke and refined petroleum products	97.5	9.7	-2.4
Manufacture of chemicals and chemical products	92.2	13.8	6.6
Manufacture of basic pharmaceutical products and pharmaceutical preparations	69.7	2.3	9.1
Manufacture of rubber and plastic products	64.3	10.3	11.1
Manufacture of other non-metallic mineral products	43.3	-0.7	-5.6
Manufacture of basic metals	57.3	6.9	17.0
Manufacture of fabricated metal products, except machinery and equipment	46.5	-9.7	-6.1
Manufacture of computer, electronic and optical products	52.3	16.7	9.1
Manufacture of electrical equipment	45.8	3.9	-4.7
Manufacture of machinery and equipment n.e.c.	46.9	2.2	-7.6
Manufacture of motor vehicles, trailers and semi-trailers	32.9	-5.5	19.0
Manufacture of other transport equipment	45.8	-8.8	-12.1
Manufacture of furniture	31.0	2.0	-9.3
Other manufacturing	42.9	1.2	10.6
Repair and installation of machinery and equipment	79.5	-13.1	-16.0
D. Electricity, gas, steam and air conditioning supply	96.7	1.0	2.4

5. General index by Autonomous Community

	Index	% variation	
		Annual	Year-to-date average
NATIONAL	63.8	3.2	1.5
Andalucía	68.8	1.2	-5.3
Aragón	59.2	6.3	-0.9
Asturias (Principado de)	72.4	0.0	3.1
Balears (Illes)	68.3	-5.4	-9.1
Canarias	86.6	9.5	0.2
Cantabria	71.4	7.2	7.9
Castilla y León	58.4	1.9	5.7
Castilla-La Mancha	75.8	4.1	-2.2
Cataluña	58.4	8.3	5.2
Comunitat Valenciana	60.3	7.7	2.1
Extremadura	86.1	2.0	9.2
Galicia	77.5	4.7	4.2
Madrid (Comunidad de)	57.1	-8.5	-5.3
Murcia (Región de)	64.7	-2.1	-3.6
Navarra (Comunidad Foral de)	58.8	-9.8	10.7
País Vasco	54.7	5.4	1.0
Rioja (La)	58.4	2.6	-0.6

More detailed information by Autonomous Community can be obtained at:

Aragón	http:portal.aragon.es/
Principado de Asturias	www.sadei.es
Illes Balears	www.ibae.caib.es
Canarias	www.gobiernodecanarias.org/istac
Cantabria	www.icane.es
Castilla y León	www.jcyl.es/estadistica
Castilla - La Mancha	www.jccm.es/estadistica
Cataluña	www.idescat.es
Comunitat Valenciana	www.ive.es/indexipi.htm
Extremadura	www.estadisticaextremadura.com
Galicia	www.ige.xunta.es
Comunidad de Madrid	www.madrid.org/estadis
Región de Murcia	www.carm.es/econet

For further information see **INEbase** - [www.ine.es/en/welcome_en.htm](http:www.ine.es/en/welcome_en.htm) All press releases at: [www.ine.es/en/prensa/prensa_en.htm](http:www.ine.es/en/prensa/prensa_en.htm)

Press Office: Telephone numbers: 91 583 93 63 / 94 08 – Fax: 91 583 90 87 - gprensa@ine.es

Information Area: Telephone number: 91 583 91 00 – Fax: 91 583 91 58 – [www.ine.es/infoine](http:www.ine.es/infoine)