

07 October 2020

Industrial Production Indices (IPI). Base 2015
August 2020. Provisional data

After adjusting for seasonal and calendar effects, the monthly variation of the Industrial Production Index stood at 0.4%,

The annual rate of the Industrial Production Index stands at -5.7% in the series adjusted for seasonal and calendar effects and at -5.7% in the original series

Main results

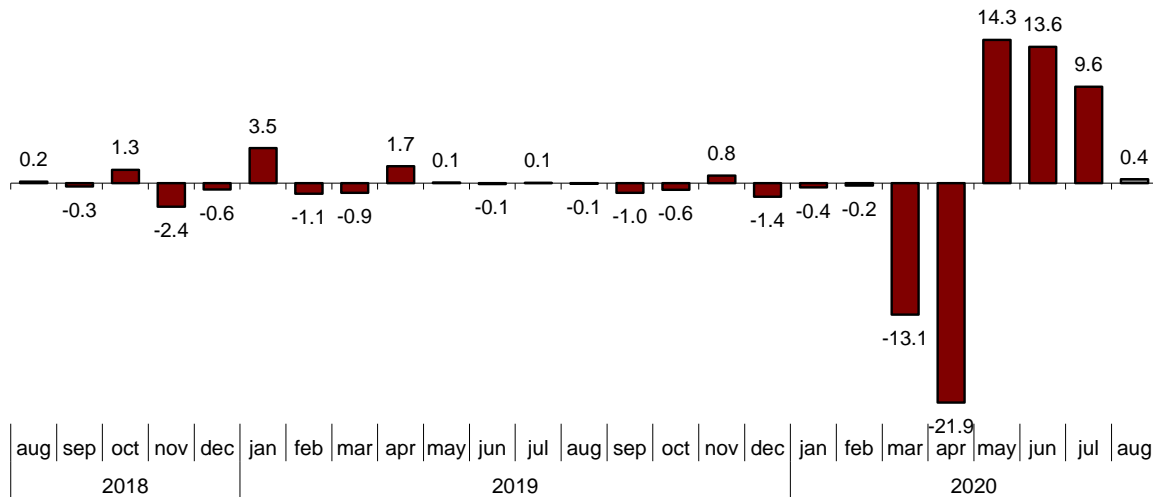
- Industrial production registered a monthly increase of 0.4% in August. This increase is generalized across all sectors, except *Non-durable consumer goods*, which fell by 1.1%.
- The greatest dynamism was observed in the *Durable Consumer Goods* Industry (5.1%) and in the *Capital Goods* Industry (3.8%).
- Industrial production recorded an annual decrease of 5.7%. *Manufacture of leather and related products* (-26.9%) and *Manufacture of coke and refined petroleum products* (-20.1%) presented the greatest decreases.
- For their part, the production of the *Manufacture of textiles* (24.1%) and the *Manufacture of other non-metallic mineral products* (10.4%) increased as compared to June 2019.
- Industrial production decreased in 14 autonomous communities compared to August 2019. The largest decreases were recorded in Illes Balears (-19.0%) and Principado de Asturias (-18.9%). On the other hand, Región de Murcia (6.9%) had the largest increase.

Monthly evolution of industrial production

After adjusting for seasonal and calendar effects, the monthly variation of the Industrial Production Index (IPI) between August and July stood at 0.4%. This rate is 9.2 points lower than that observed in July.

General Industrial Production Index

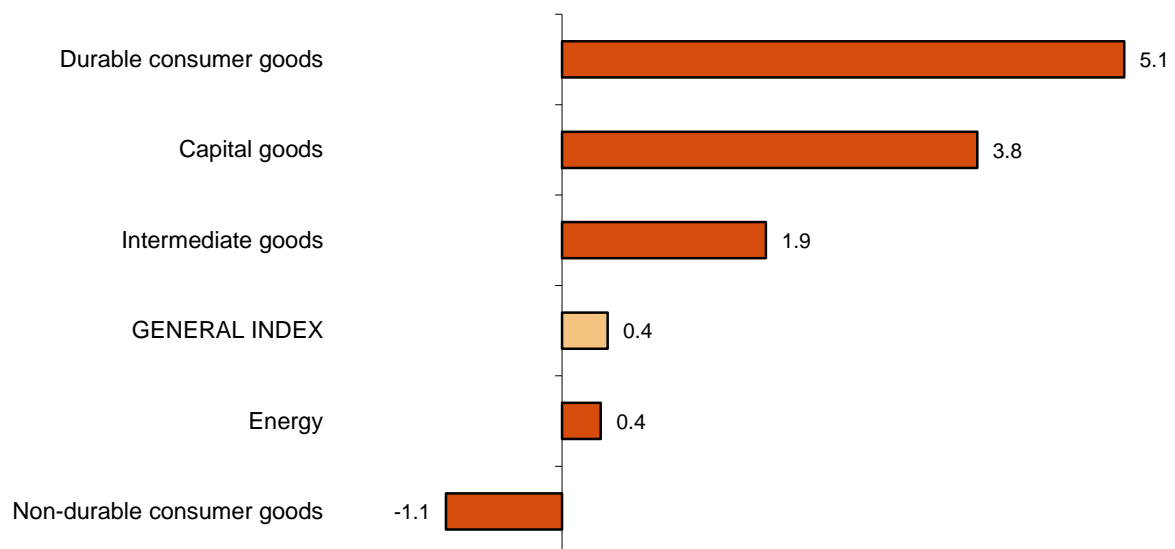
Adjusted for seasonal and calendar effects. Monthly rate (percentage)



Four of the five sectors showed positive monthly rates. It is worth highlighting the increase in *Durable consumer goods* (5.1%) followed by *Capital goods* (3.8%). The only sector that decreased was *Non-durable consumer goods* (-1.1%).

Industrial Production Indices: General and by economic destination

Adjusted for seasonal and calendar effects. August 2020. Monthly rate (percentage)



A more detailed analysis shows the branches of activity with the highest and lowest monthly rates in the month of August.

Branches of activity with the highest monthly rates of the industrial production index adjusted for seasonal and calendar effects

Activity (Division from CNAE 2009)	Monthly rate (%)
Tobacco industry	31.9
Textile industry	20.5
Manufacture of wood and of products of wood and cork, except furniture;	16.6

Branches of activity with the lowest monthly rates of the industrial production index adjusted for seasonal and calendar effects

Activity (Division from CNAE 2009)	Monthly rate (%)
Manufacture of pharmaceutical products	-15.7
Extraction of anthracite, coal and lignite	-11.9
Other mining and quarrying	-4.8

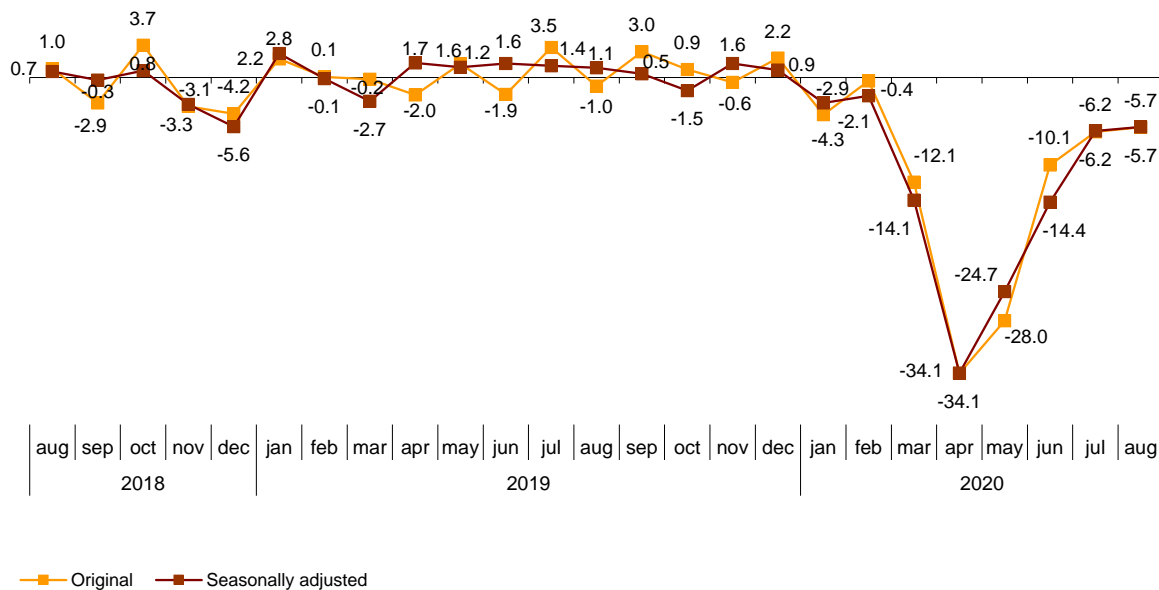
Annual evolution of industrial production

The Industrial Production Index corrected for seasonal and calendar effects presents a variation of -5.7% in August with respect to the same month of the previous year. This rate is 0.5 points higher than that registered in July.

The original IPI series experienced an annual variation of -5.7%. This rate is 0.5 points higher than that of July.

General Industrial Production Index

Annual rate (percentage)



Four of the five sectors showed negative annual rates. It is worth highlighting the decrease in *Capital goods* (-9.9%) followed by *Non-durable consumer goods* (-6.5%). The only sector that increased was *Durable consumer goods* (4.4%).

Annual rates of industrial production indices: General and by economic destination of the goods

	Original index Annual rate (%)	Seasonally adjusted index Annual rate (%)
General Index	-5.7	-5.7
Consumer goods	-7.3	-6.9
- Durable consumer goods	5.4	4.4
- Non-durable consumer goods	-8.1	-6.5
Capital goods	-10.3	-9.9
Intermediate goods	-2.3	-2.4
Energy	-4.6	-4.8

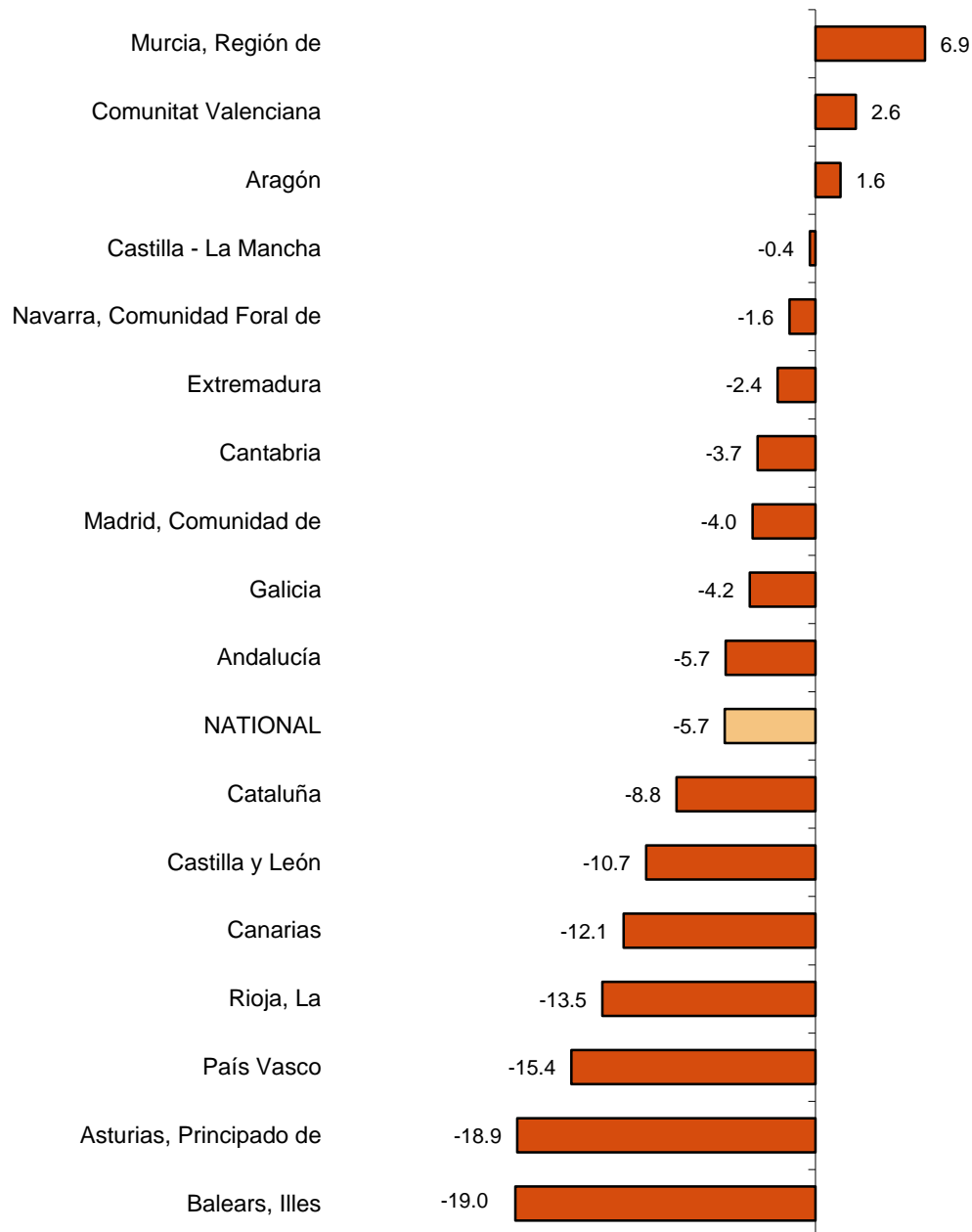
Results by Autonomous Communities. Annual variation rates of industrial production. Original series

The annual rate of industrial production increased as compared to August 2019 in three Autonomous Communities and decreased in the other 14.

The largest decreases were recorded in Illes Balears (-19.0%), Principado de Asturias (-18.9%) and País Vasco (-15.4%). The largest increases were recorded in Región de Murcia (6.9%), Comunitat Valenciana (2.6%) and Aragón (1.6%).

General indices: national and by Autonomous Communities

August 2020. Annual rate (percentage)



Data Review and Update

Coinciding with today's publication, the INE has updated the data of the IPI series corresponding to the last two months. In the case of the series adjusted for calendar effects and for seasonal and calendar effects, the series is revised from the beginning, following the INE standard. The results are available at INEBase.

Methodological note

The **Industrial Production Index (IPI)** is a short-term indicator that measures the monthly evolution of the productive activity of the industrial branches, excluding construction, contained in the National Classification of Economic Activities 2009 (CNAE-2009). It therefore investigates the activities included in sections B, C, D and division 36: Water collection, treatment and supply, from section E of the CNAE-2009.

The IPI measures the joint evolution of quantity and quality, eliminating the influence of prices.

Type of survey: monthly continuous survey.

Base year: 2015.

Population scope: industrial establishments whose main activity is included in sections B, C, D and division 36 of the CNAE-2009.

Geographical scope: the entire national territory.

Sample size: 11,500 industrial establishments and more than 1,100 products.

Collection method: completion of the questionnaire by the respondent using one of the following methods: internet (IRIA system), e-mail, fax, telephone or by postal mail.

For more information the methodology can be accessed at:

https://www.ine.es/en/daco/daco43/metoipi15_en.pdf

And the standardised methodological report at:

<https://www.ine.es/dynt3/metadatos/en/RespuestaDatos.html?oe=30050>

For further information see **INEbase:** www.ine.es/en/ Twitter: [@es_ine](https://twitter.com/es_ine)

All press releases at: www.ine.es/en/prensa/prensa_en.htm

Press Office: Telephone numbers: (+34) 91 583 93 63 /94 08 – gprensa@ine.es

Information Area: Telephone number: (+34) 91 583 91 00 – www.ine.es/infoine/?L=1

Industrial Production Indices. Base 2015

August 2020

Provisional Data

1. Industrial Production Indices: General and by economic destination adjusted for seasonal and calendar effects

	Index	Rate (%)		
		Monthly	Annual	Year-to-date average
General Index	100.7	0.4	-5.7	-13.0
Consumer goods	97.7	-1.7	-6.9	-9.7
- Durable consumer goods	105.1	5.1	4.4	-20.0
- Non-durable consumer goods	96.8	-1.1	-6.5	-8.3
Capital goods	104.4	3.8	-9.9	-20.9
Intermediate goods	104.9	1.9	-2.4	-12.5
Energy	96.0	0.4	-4.8	-8.6

2. Industrial Production Indices: General and by economic destination adjusted for seasonal and calendar effects

	Index	Rate (%)	
		Annual	Year-to-date average
General Index	81.9	-5.7	-13.3
Consumer goods	84.5	-7.3	-9.7
- Durable consumer goods	70.8	5.4	-21.3
- Non-durable consumer goods	85.8	-8.0	-8.8
Capital goods	62.9	-10.3	-21.7
Intermediate goods	79.5	-2.3	-12.9
Energy	101.2	-4.6	-8.5

3. Industrial Production Indices: General and by economic destination. Original series

	Index	Rate (%)		Repercussion Annual
		Annual	Year-to-date average	
General Index	81.0	-5.7	-12.8	
Consumer goods	83.3	-7.3	-9.4	-1.992
- Durable consumer goods	69.6	5.4	-20.7	0.083
- Non-durable consumer goods	84.5	-8.1	-8.5	-2.075
Capital goods	62.0	-10.3	-21.1	-1.849
Intermediate goods	78.6	-2.3	-12.5	-0.648
Energy	101.0	-4.6	-8.0	-1.240

**4. Industrial Production Indices: General and by branches of activity (CNAE 2009).
Original series**

	Index	Rate (%)		Repercussion
		Annual	Year-to-date average	Annual
General Index	81.0	-5.7	-12.8	
B. Mining and quarrying industries	85.8	-3.2	-5.8	-0.023
Extraction of anthracite, coal and lignite
National crude petroleum and natural gas
Extraction of metallic ores
Other mining and quarrying	94.0	4.4	-12.3	0.026
C. Manufacturing industry	75.9	-6.8	-14.2	-5.129
Food Industry	95.1	-6.7	-6.4	-0.955
Manufacture of beverages.	98.7	-4.1	-10.5	-0.162
Tobacco industry.
Textile industry	59.3	24.1	-16.4	0.145
Manufacture of garments	93.7	-17.3	-33.7	-0.212
Leather and footwear industry	46.0	-26.9	-27.4	-0.185
Manufacture of wood and of products of wood and cork, except furniture; basketmaking and wickerwork	64.4	5.3	-18.7	0.047
Manufacture of paper and paper-products	80.3	-7.2	-5.0	-0.177
Graphic arts and reproduction of recorded media	63.8	-18.9	-22.9	-0.282
Manufacture of coke and refined petroleum products	94.3	-20.1	-16.5	-0.658
Chemical Industry	90.0	-1.7	-5.1	-0.113
Manufacture of pharmaceutical products	62.1	-12.3	1.9	-0.371
Rubber and plastic material transformation industry	80.6	-2.7	-13.8	-0.118
Manufacture of other non-metallic ore products	90.2	10.4	-13.8	0.367
Metallurgy; manufacture of iron, steel and ferro-alloy products	59.7	-16.3	-18.7	-0.463
Manufacture of metal products, except machinery and equipment	72.5	-4.4	-18.3	-0.306
Manufacture of computers, electronic and optical products	75.0	-3.5	-5.3	-0.034
Manufacture of electrical material and equipment	77.6	0.6	-6.2	0.014
Manufacture of machinery and equipment n.e.c.	73.6	-5.6	-13.8	-0.235
Manufacture of motor vehicles, trailers and semi-trailers	42.3	-19.9	-30.6	-0.997
Manufacture of other transport equipment	48.0	-8.5	-19.6	-0.142
Manufacture of furniture.	74.2	2.2	-23.9	0.024
Other manufacturing industries	59.8	3.9	-25.9	0.029
Repair and installation of machinery and equipment	96.1	-10.3	-14.9	-0.350
D. Supply of electrical energy, gas, steam and air conditioning	95.6	-3.2	-7.2	-0.600
E. Water supply, activities, waste management and decontamination*	139.7	0.5	-5.1	0.022

* It only includes Water collection, treatment and supply

(..) Data not available due to statistical secrecy.

5. Industrial production indices: national and by Autonomous Community. Original series

	Index	Rate (%)	
		Annual	Year-to-date average
National	81.0	-5.7	-12.8
Andalucía	89.0	-5.7	-14.2
Aragón	82.2	1.6	-14.4
Asturias, Principado de	76.6	-18.9	-16.9
Balears, Illes	78.3	-19.0	-23.3
Canarias	84.6	-12.1	-12.0
Cantabria	90.5	-3.7	-14.5
Castilla y León	67.9	-10.7	-15.1
Castilla-La Mancha	90.4	-0.4	-10.8
Cataluña	74.8	-8.8	-13.6
Comunitat Valenciana	84.7	2.6	-10.3
Extremadura	122.7	-2.4	-9.7
Galicia	85.3	-4.2	-13.2
Madrid, Comunidad de	84.7	-4.0	-9.8
Murcia, Región de	114.0	6.9	-3.4
Navarra, Comunidad Foral de	92.3	-1.6	-11.8
País Vasco	63.2	-15.4	-16.6
Rioja, La	58.6	-13.5	-16.0

More detailed information by Autonomous Community may be obtained at:

Andalucía	www.juntadeandalucia.es/institutodeestadisticaycartografia
Aragón	www.aragon.es/iaest/ipi
Principado de Asturias	www.sadei.es
Illes Balears	www.ibestat.caib.es
Canarias	www.gobiernodecanarias.org/istac
Cantabria	www.icane.es
Castilla y León	www.jcyl.es/estadistica
Castilla - La Mancha	www.jccm.es/estadistica
Cataluña	www.idescat.cat
Comunitat Valenciana	www.ive.es
Extremadura	http://estadistica.juntaex.es
Galicia	www.ige.xunta.es
Comunidad de Madrid	www.madrid.org/iestadis
Región de Murcia	http://econet.carm.es
La Rioja	www.larioja.org