

06 November 2020

Industrial Production Indices (IPI). Base 2015
September 2020. Provisional Data

The monthly variation of the Industrial Production Index is 0.8% after adjusting for seasonal and calendar effects

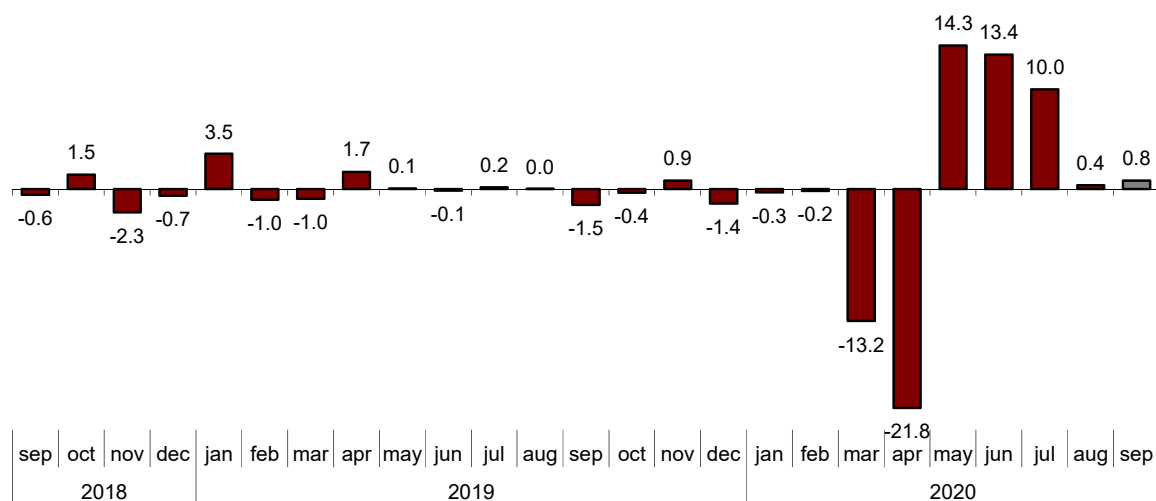
The annual rate of the Industrial Production Index stands at -3.4% in the series adjusted for seasonal and calendar effects and at -0.6% in the original series

Monthly evolution of industrial production

The monthly variation of the Industrial Production Index (IPI) between the months of September and August, after adjusting for seasonal and calendar effects, was 0.8%. This rate is 0.4 points higher than that observed in August.

General Industrial Production Index

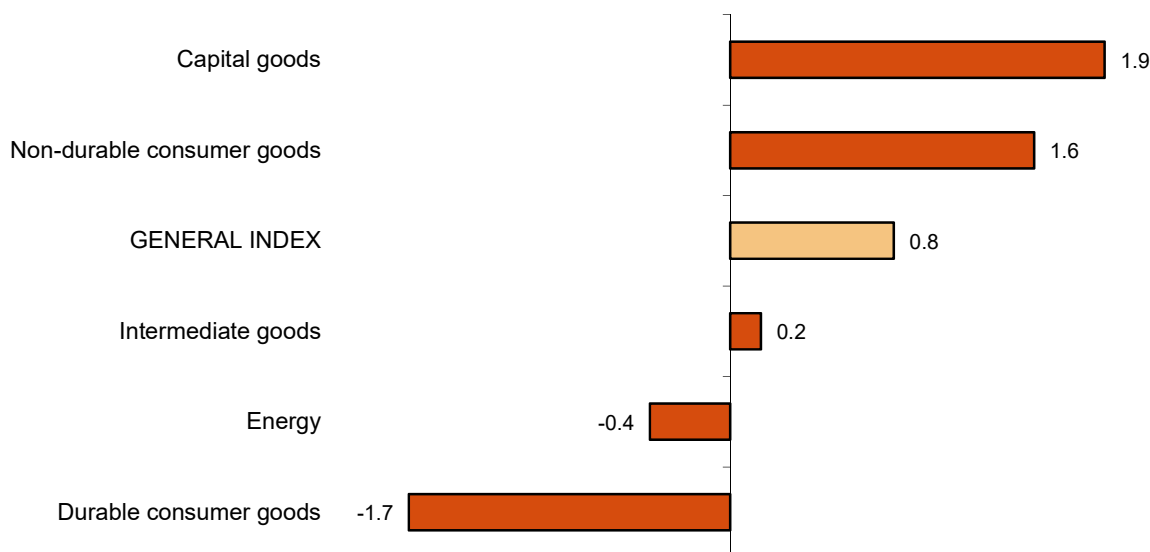
Adjusted for seasonal and calendar effects. Monthly rate (percentage)



By sectors, *Capital goods* (1.9%), *Non-durable consumer goods* (1.6%) and *Intermediate goods* (0.8%) showed positive monthly rates. On the other hand, *Durable consumer goods* (-1.7%) and *Energy* (-0.4%) showed negative monthly rates.

Industrial Production Indices: General and by economic destination

Adjusted for seasonal and calendar effects. September 2020. Monthly rate (percentage)



A more detailed analysis shows the branches of activity with the greatest and lowest monthly rates in the month of September.

Branches of activity with the highest monthly rates of the industrial production index adjusted for seasonal and calendar effects

Activity (Division from CNAE 2009)	Monthly rate (%)
Manufacture of garments	28.3
Metallurgy; manufacture of iron, steel and ferro-alloy products	13.8
Manufacture of pharmaceutical products	13.2

Branches of activity with the lowest monthly rates of the industrial production index adjusted for seasonal and calendar effects

Activity (Division from CNAE 2009)	Monthly rate (%)
Tobacco industry	-21.8
Textile industry	-20.3
Manufacture of other non-metallic ore products	-12.7

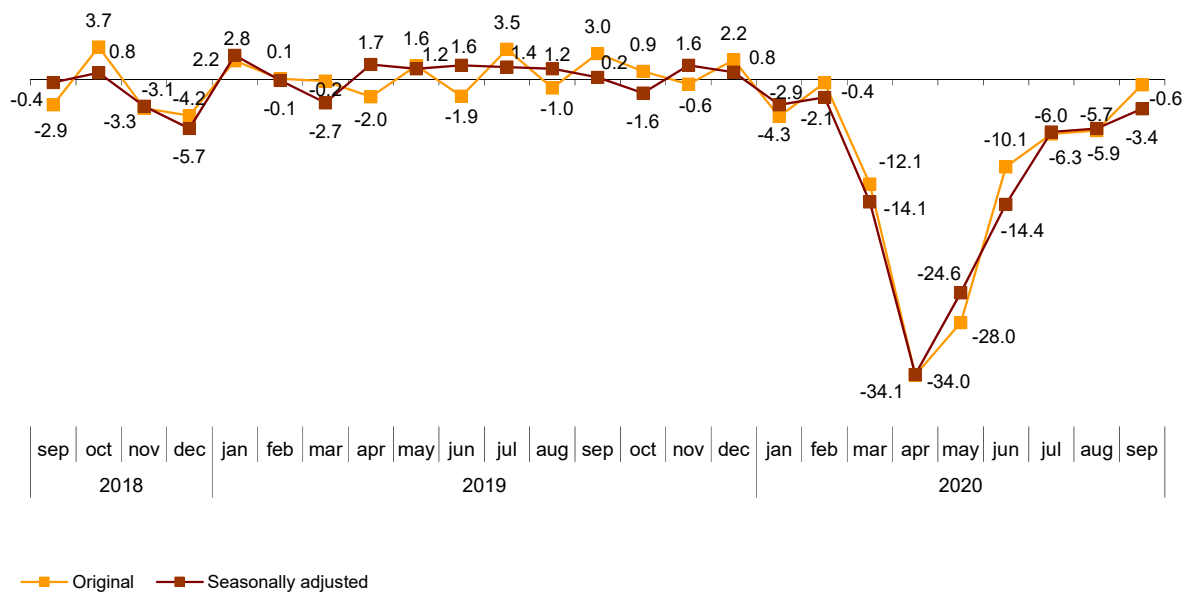
Annual evolution of industrial production

The Industrial Production Index, adjusted for seasonal and calendar effects, recorded a variation rate of -3.4% in September, compared to the same month of the previous year. This rate is 2.3 points higher than that registered in August.

The original IPI series experienced an annual variation of -0.6%. This rate is 5.3 points higher than that of August.

General Industrial Production Index

Annual rate (percentage)



Four of the five sectors showed negative annual rates. It is worth highlighting the decrease in *Capital goods* (-5.1%) followed by *Energy* (-4.3%). The only sector that increased was *Durable consumer goods* (0.4%).

Annual rates of industrial production indices: General and by economic destination of the goods

	Original index Annual rate (%)	Seasonally adjusted index Annual rate (%)
General Index	-0.6	-3.4
Consumer goods	1.4	-2.1
- Durable consumer goods	4.7	0.4
- Non-durable consumer goods	1.1	-3.1
Capital goods	-2.3	-5.1
Intermediate goods	0.9	-1.8
Energy	-3.4	-4.3

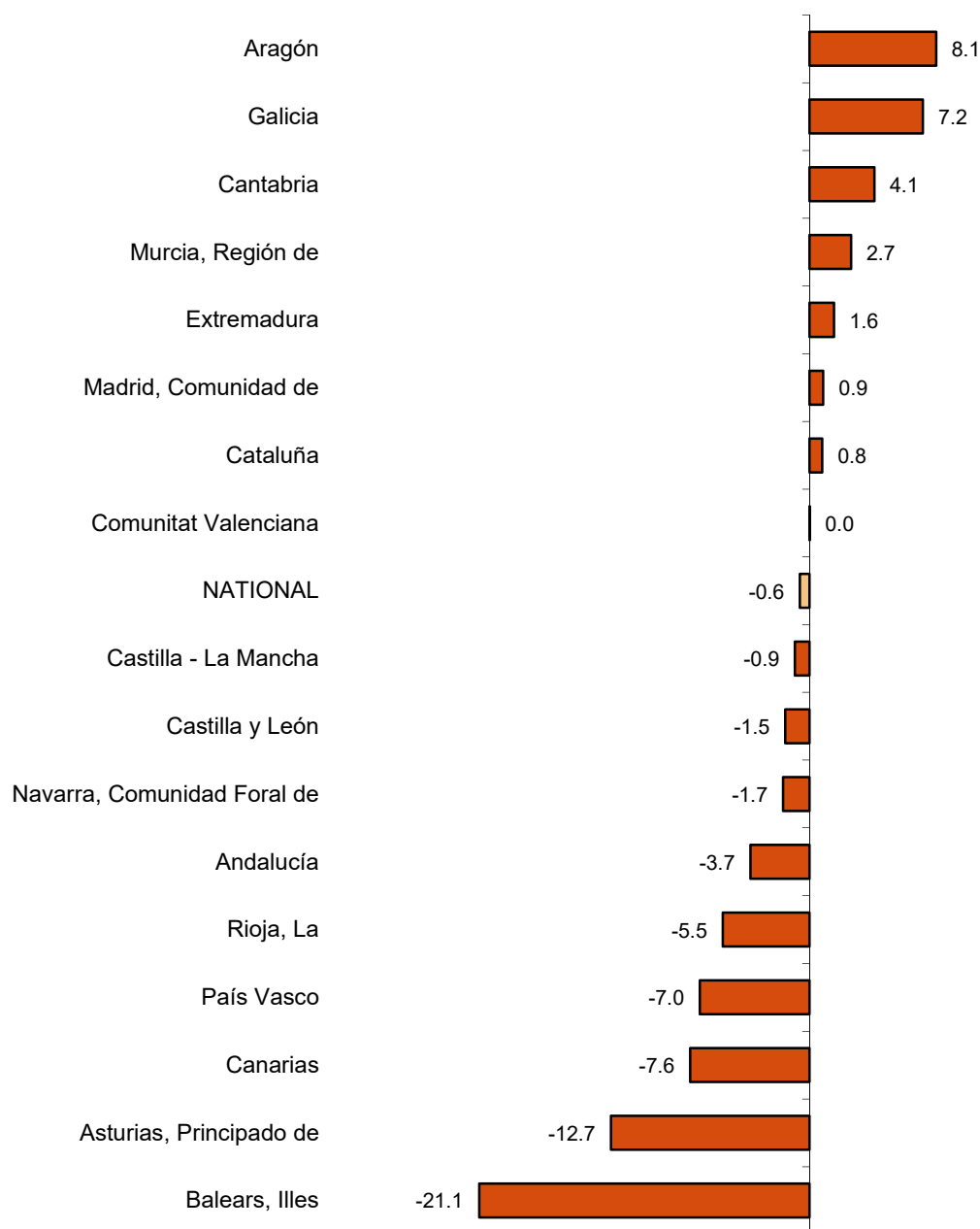
Results by Autonomous Communities. Annual variation rates of industrial production. Original series

The annual rate of industrial production increased as compared to September 2019 in eight Autonomous Communities and decreased in the other nine.

The largest decreases were recorded in Illes Balears (-21.1%), Principado de Asturias (-12.7%) and Canarias (-7.6%). The largest increases were recorded in Aragón (8.1%), Galicia (7.2%) and Cantabria (4.1%).

General indices: national and by Autonomous Communities

September 2020. Annual rate (percentage)



Data Review and Update

Coinciding with today's publication, the INE has updated the data of the IPI series corresponding to the last two months. In the case of the series adjusted for calendar effects and for seasonal and calendar effects, the series is revised from the beginning, following the INE standard. The results are available at INEBase.

Methodological note

The **Industrial Production Index (IPI)** is a short-term indicator that measures the monthly evolution of the productive activity of the industrial branches, excluding construction, contained in the National Classification of Economic Activities 2009 (CNAE-2009). It therefore investigates the activities included in sections B, C, D and division 36: Water collection, treatment and supply, from section E of the CNAE-2009.

The IPI measures the joint evolution of quantity and quality, eliminating the influence of prices.

Type of survey: monthly continuous survey.

Base year: 2015.

Population scope: industrial establishments whose main activity is included in sections B, C, D and division 36 of the CNAE-2009.

Geographical scope: the entire national territory.

Sample size: 11,500 industrial establishments and more than 1,100 products.

Collection method: completion of the questionnaire by the respondent using one of the following methods: internet (IRIA system), e-mail, fax, telephone or by postal mail.

For more information the methodology can be accessed at:

https://www.ine.es/en/daco/daco43/metoipi15_en.pdf

And the standardised methodological report at:

<https://www.ine.es/dynt3/metadatos/en/RespuestaDatos.html?oe=30050>

For further information see **INEbase:** www.ine.es/en/ Twitter: [@es_ine](https://twitter.com/es_ine)

All press releases at: www.ine.es/en/prensa/prensa_en.htm

Press Office: Telephone numbers: (+34) 91 583 93 63 /94 08 – gprensa@ine.es

Information Area: Telephone number: (+34) 91 583 91 00 – www.ine.es/infoine/?L=1

Industrial Production Indices. Base 2015

September 2020

Provisional Data

1. Industrial Production Indices: General and by economic destination adjusted for seasonal and calendar effects

	Index	Rate (%)		
		Monthly	Annual	Year-to-date average
General Index	101.8	0.8	-3.4	-11.9
Consumer goods	100.3	2.5	-2.1	-8.9
- Durable consumer goods	103.9	-1.7	0.4	-17.7
- Non-durable consumer goods	99.1	1.6	-3.1	-7.4
Capital goods	106.9	1.9	-5.1	-19.1
Intermediate goods	105.1	0.2	-1.8	-11.3
Energy	95.7	-0.4	-4.3	-8.1

2. Industrial Production Indices: General and by economic destination adjusted for seasonal and calendar effects

	Index	Rate (%)	
		Annual	Year-to-date average
General Index	104.6	-3.1	-12.1
Consumer goods	103.5	-1.8	-8.9
- Durable consumer goods	110.5	0.9	-18.6
- Non-durable consumer goods	102.9	-1.8	-8.1
Capital goods	109.9	-5.3	-19.8
Intermediate goods	108.6	-1.6	-11.7
Energy	95.0	-4.1	-8.0

3. Industrial Production Indices: General and by economic destination. Original series

	Index	Rate (%)		Repercussion Annual
		Annual	Year-to-date average	
General Index	105.8	-0.6	-11.5	
Consumer goods	104.9	1.4	-8.3	0.355
- Durable consumer goods	112.5	4.7	-17.7	0.096
- Non-durable consumer goods	104.3	1.1	-7.5	0.259
Capital goods	111.4	-2.3	-18.9	-0.537
Intermediate goods	109.8	0.9	-11.0	0.264
Energy	95.4	-3.4	-7.5	-0.683

4. Industrial Production Indices: General and by branches of activity (CNAE 2009). Original series

	Index	Rate (%)		Repercussion Annual
		Annual	Year-to-date average	
General Index	105.8	-0.6	-11.5	
B. Mining and quarrying industries	84.8	-12.8	-6.4	-0.081
Extraction of anthracite, coal and lignite
National crude petroleum and natural gas
Extraction of metallic ores
Other mining and quarrying	100.2	0.8	-10.6	0.004
C. Manufacturing industry	108.2	-0.3	-12.7	-0.257
Food Industry	106.8	2.0	-5.5	0.235
Manufacture of beverages.	95.4	-6.4	-10.0	-0.200
Tobacco industry.
Textile industry	102.4	1.5	-14.7	0.016
Manufacture of garments	133.3	3.8	-29.9	0.043
Leather and footwear industry	60.1	-27.0	-27.2	-0.197
Manufacture of wood and of products of wood and cork, except furniture; basketmaking and wickerwork	102.6	1.1	-16.6	0.013
Manufacture of paper and paper-products	95.6	-2.8	-4.8	-0.064
Graphic arts and reproduction of recorded media	71.6	-11.1	-21.8	-0.137
Manufacture of coke and refined petroleum products	88.8	-17.2	-16.6	-0.413
Chemical Industry	113.5	6.8	-3.8	0.419
Manufacture of pharmaceutical products	120.0	9.7	2.8	0.363
Rubber and plastic material transformation industry	116.4	5.3	-11.6	0.249
Manufacture of other non-metallic ore products	109.6	-1.5	-12.4	-0.059
Metallurgy; manufacture of iron, steel and ferro-alloy products	98.9	-4.6	-17.3	-0.155
Manufacture of metal products, except machinery and equipment	113.2	1.0	-16.3	0.085
Manufacture of computers, electronic and optical products	134.0	11.2	-3.3	0.133
Manufacture of electrical material and equipment	122.2	5.0	-5.0	0.155
Manufacture of machinery and equipment n.e.c.	115.6	-8.5	-13.2	-0.463
Manufacture of motor vehicles, trailers and semi-trailers	109.2	3.9	-26.8	0.312
Manufacture of other transport equipment	101.7	-13.3	-18.9	-0.401
Manufacture of furniture.	115.2	0.3	-21.0	0.004
Other manufacturing industries	108.6	-8.6	-24.0	-0.106
Repair and installation of machinery and equipment	113.3	-2.8	-13.4	-0.085
D. Supply of electrical energy, gas, steam and air conditioning	92.0	-1.3	-6.6	-0.189
E. Water supply, activities, waste management and decontamination*	122.3	-2.2	-4.7	-0.074

* It only includes Water collection, treatment and supply

(..) Data not available due to statistical secrecy.

5. Industrial production indices: national and by Autonomous Community. Original series

	Index	Rate (%)	
		Annual	Year-to-date average
National	105.8	-0.6	-11.5
Andalucía	98.6	-3.7	-13.0
Aragón	111.8	8.1	-12.0
Asturias, Principado de	89.9	-12.7	-16.6
Balears, Illes	71.5	-21.1	-23.0
Canarias	86.8	-7.6	-11.5
Cantabria	116.5	4.1	-12.5
Castilla y León	94.6	-1.5	-13.6
Castilla-La Mancha	103.8	-0.9	-9.7
Cataluña	105.0	0.8	-12.1
Comunitat Valenciana	110.1	0.0	-9.1
Extremadura	125.0	1.6	-8.0
Galicia	111.7	7.2	-10.8
Madrid, Comunidad de	108.8	0.9	-8.6
Murcia, Región de	125.4	2.7	-2.6
Navarra, Comunidad Foral de	118.6	-1.7	-10.5
País Vasco	104.8	-7.0	-15.6
Rioja, La	86.1	-5.5	-15.0

More detailed information by Autonomous Community may be obtained at:

Andalucía	www.juntadeandalucia.es/institutodeestadisticaycartografia
Aragón	www.aragon.es/iaest/ipi
Principado de Asturias	www.sadei.es
Illes Balears	www.ibestat.caib.es
Canarias	www.gobiernodecanarias.org/istac
Cantabria	www.icane.es
Castilla y León	www.jcyl.es/estadistica
Castilla - La Mancha	www.jccm.es/estadistica
Cataluña	www.idescat.cat
Comunitat Valenciana	www.ive.es
Extremadura	http://estadistica.juntaex.es
Galicia	www.ige.xunta.es
Comunidad de Madrid	www.madrid.org/iestadis
Región de Murcia	http://econet.carm.es
La Rioja	www.larioja.org