

**Industrial Production Index (IPI). Base 2010**  
October 2014. *Provisional data*

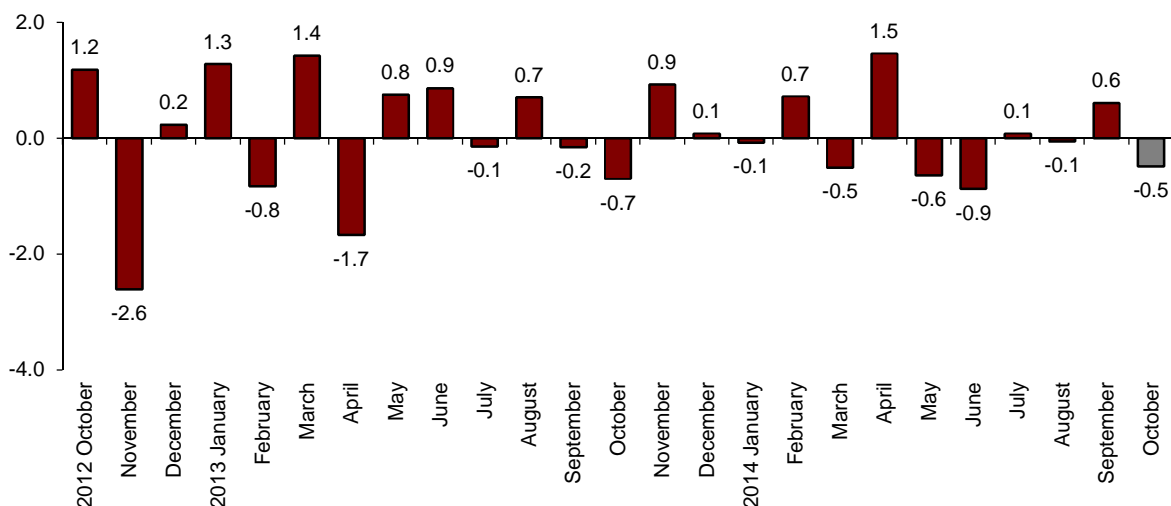
**The monthly variation of the Industrial Production Index stands at  $-0.5\%$ , after adjusting the seasonal and calendar effects**

**The annual rate of the Industrial Production Index stands at  $1.2\%$  in the series adjusted for the seasonal and calendar effects and at  $0.6\%$  in the original series**

**Monthly evolution of the Industrial Production**

After adjusting the seasonal and calendar effects, the monthly variation of the Industrial Production Index (IPI) between October and September stood at  $-0.5\%$ . This rate was 1.1 points lower than that registered in September.

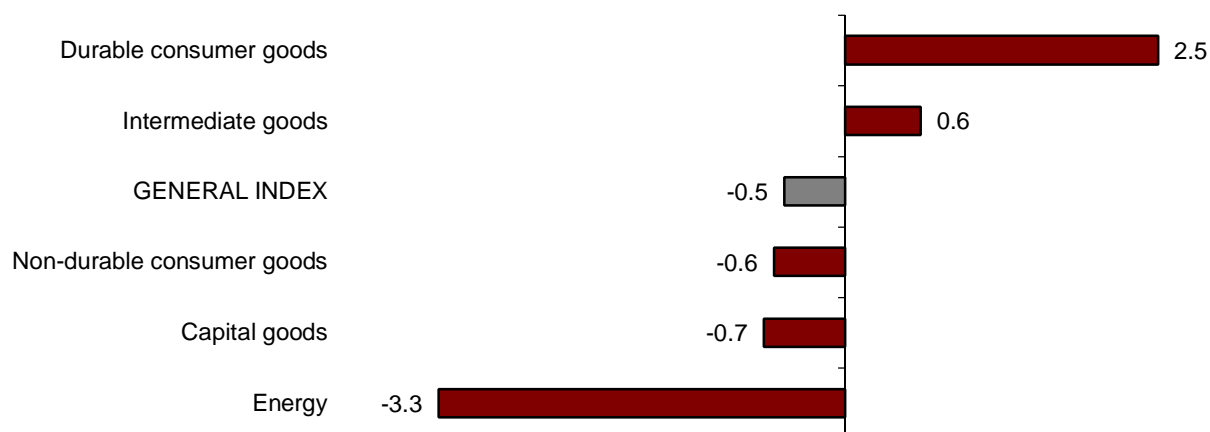
**General Industrial Production Index**  
**Adjusted for seasonal and calendar effects. Monthly rate**



Durable consumer goods (2.5%) and Intermediate goods (0.6%) registered positive monthly variation rates.

In turn, Energy (-3.3%) and Capital goods (-0.7%) registered the greatest negative variation rates.

**Industrial Production Indices: General and by economic destination of the goods. Adjusted for seasonal and calendar effects. Monthly rate**



A more detailed analysis showed the activities that registered the highest and lowest monthly rates in the month of October.

**Activities with the highest annual rates of the Industrial Production Indices adjuted for seasonal and calendar effects**

Activity (Division from CNAE 2009)	Monthly rate (%)
Other manufacturing industries	7.1
Manufacture of other transport equipment	3.2
Manufacture of beverages	3.0

**Activities with the lowest annual rates of the Industrial Production Indices adjuted for seasonal and calendar effects**

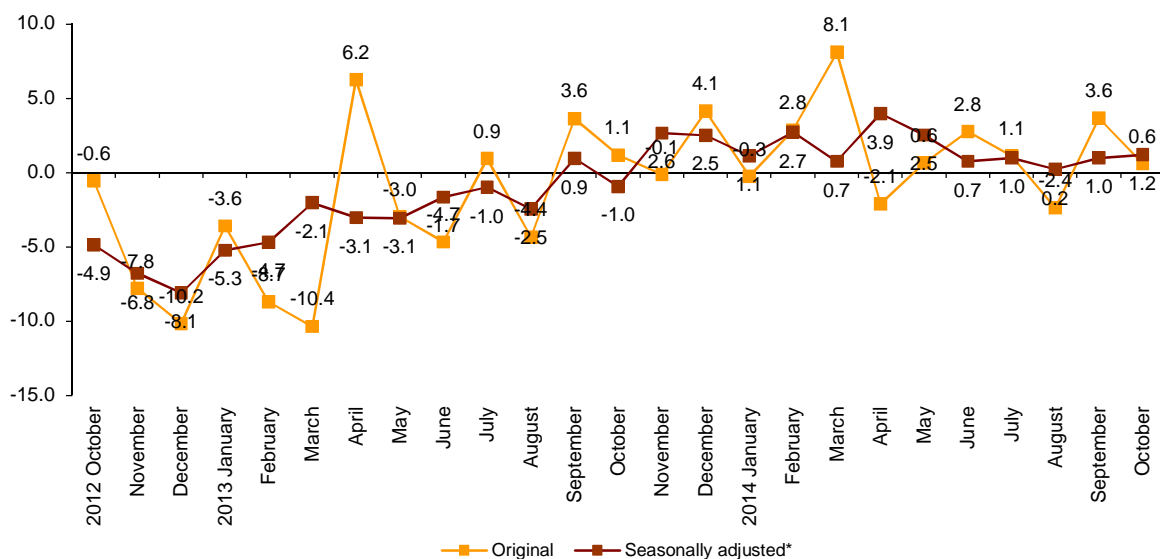
Activity (Division from CNAE 2009)	Monthly rate (%)
Extraction of anthracite, coal and lignite	-18.9
Tobacco industry	-14.4
Graphic arts and reproduction of recorded media	-7.2

## Annual evolution of the Industrial Production

After adjusting the seasonal and calendar effects, the Industrial Production Index (IPI) registered a variation of 1.2% in October, as compared with the same month of the previous year. This rate was 0.2 points higher than that registered in September.

The original series of the Industrial Production Index recorded an annual variation of 0.6%. This rate was 3.0 points lower than that of September.

**General Industrial Production Index**  
Annual rate



After adjusting the seasonal and calendar effects, Intermediate goods (3.5%) and Durable consumer goods (2.4%) registered positive annual rates.

In contrast, Energy (-2.5%), Durable consumer goods (-0.6%) and Capital goods (-0.6%) recorded the negative rates.

### Annual rates of the Industrial Production Indices: General and by economic destination of the goods

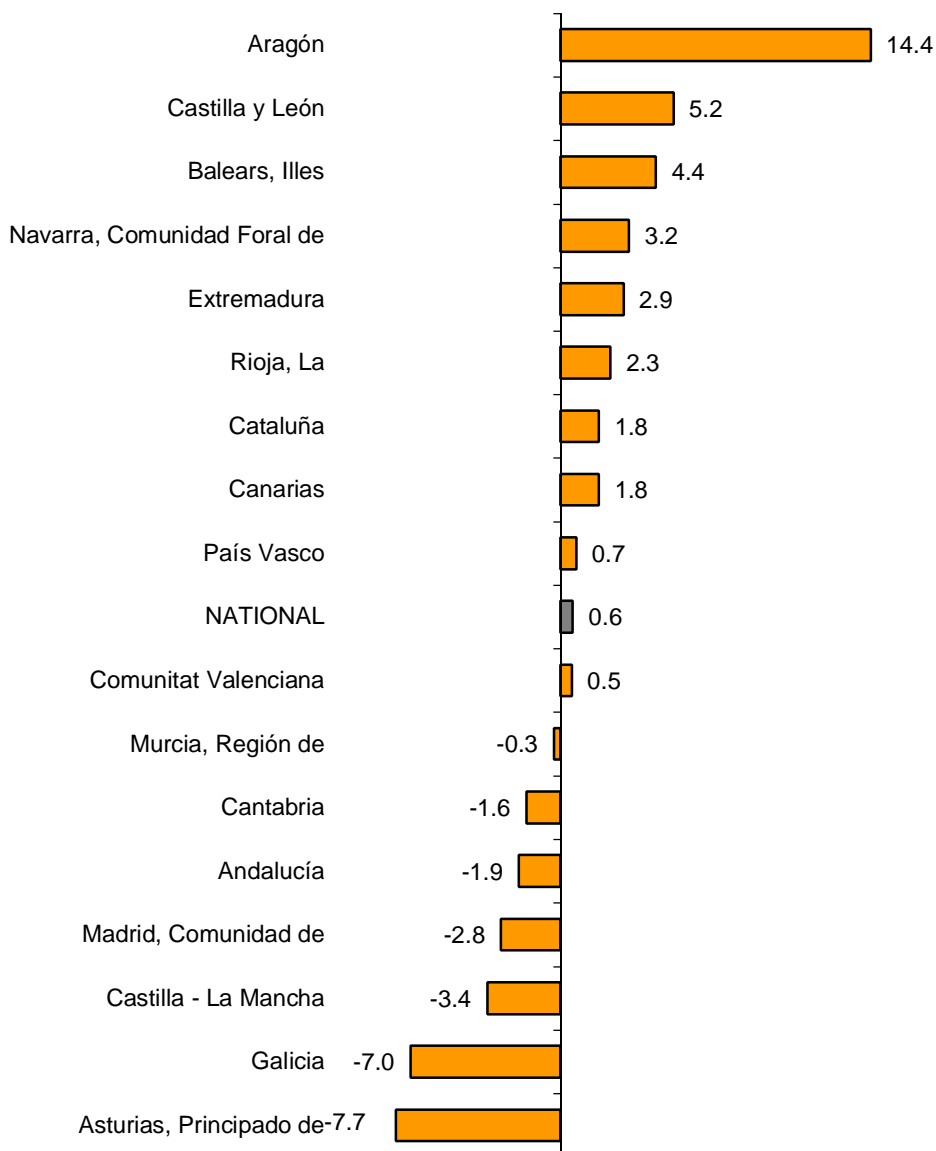
	Original index	Seasonally adjusted index
	Annual rate(%)	Annual rate (%)
<b>GENERAL INDEX</b>	0.6	1.2
1. Consumer goods	1.1	2.2
1.1. Durable consumer goods	-0.9	-0.6
1.2. Non-durable consumer goods	1.3	2.4
2. Capital goods	-0.7	-0.6
3. Intermediate goods	3.1	3.5
4. Energy	-3.1	-2.5

**Results by Autonomous Community. Annual variation rates of the Industrial Production. Original series**

The annual rates of the original series of the Industrial Production increased in nine Autonomous Communities. The greatest increases were registered in Aragón (14.4%), Castilla y León (5.2%), and Illes Balears (4.4%).

In turn, the greatest decreases were registered in Principado de Asturias (-7.7%), Galicia (-7.0%) and Castilla-La Mancha (-3.4%).

**General indices: national and by Autonomous Community  
Annual rate of the Industrial Production Index**



## Industrial Production Indices. Base 2010 October 2014

Provisional data

### 1. General index by economic destination of the goods. Adjusted for seasonal and calendar effects

	Index	Rate (%)		
		Monthly	Annual	Year-to-date average
<b>GENERAL INDEX</b>	<b>91.6</b>	<b>-0.5</b>	<b>1.2</b>	<b>1.5</b>
1. Consumer goods	93.1	-0.9	2.2	2.1
1.1. Durable consumer goods	65.6	2.5	-0.6	-3.4
1.2. Non-durable consumer goods	97.0	-0.6	2.4	2.5
2. Capital goods	90.8	-0.7	-0.6	0.9
3. Intermediate goods	89.4	0.6	3.5	2.9
4. Energy	92.6	-3.3	-2.5	-1.2

### 2. General index by economic destination of the goods. Adjusted for calendar effects

	Index	Rate (%)	
		Annual	Year-to-date average
<b>GENERAL INDEX</b>	<b>95.0</b>	<b>0.9</b>	<b>1.5</b>
1. Consumer goods	97.1	1.7	2.2
1.1. Durable consumer goods	73.6	-0.4	-3.2
1.2. Non-durable consumer goods	100.3	1.9	2.6
2. Capital goods	98.3	-0.5	1.3
3. Intermediate goods	94.9	3.4	2.9
4. Energy	88.0	-2.9	-1.3

### 3. General index by economic destination of the goods. Original indices

	Index	Rate (%)		Repercussion
		Annual	Year-to-date average	Annual
<b>GENERAL INDEX</b>	<b>98.1</b>	<b>0.6</b>	<b>1.5</b>	
1. Consumer goods	101.2	1.1	2.0	0.306
1.1. Durable consumer goods	77.1	-0.9	-3.1	-0.022
1.2. Non-durable consumer goods	104.1	1.3	2.4	0.328
2. Capital goods	102.4	-0.7	1.4	-0.164
3. Intermediate goods	97.8	3.1	2.9	0.975
4. Energy	89.0	-3.1	-1.3	-0.553

#### 4. General index by branch of activity (CNAE 2009)

	Index	Rate (%)		Repercussion
		Annual	Year-to-date average	Annual
<b>GENERAL INDEX</b>	<b>98.1</b>	<b>0.6</b>	<b>1.5</b>	
<b>B. Mining and quarrying industries</b>	58.8	-4.9	-0.7	-0.035
Extraction of anthracite, coal and lignite	50.5	-11.5	1.9	-0.018
National crude petroleum and natural gas	..	..	..	..
Extraction of metallic ores	..	..	..	..
Other mining and quarrying	59.9	-2.4	-1.0	-0.013
<b>C. Manufacturing industry</b>	100.7	1.4	2.2	1.163
Food Industry	107.5	2.2	4.4	0.285
Manufacture of beverages.	104.9	8.0	4.1	0.280
Tobacco industry.	101.0	-21.3	-5.7	-0.085
Textile industry	107.7	2.5	2.5	0.029
Manufacture of garments	86.5	-9.4	-6.3	-0.122
Leather and footwear industry	88.5	-1.1	3.5	-0.007
Manufacture of wood and of products of wood and cork, except furniture; basketm	89.6	2.0	4.9	0.027
Manufacture of paper and paper-products	103.4	-2.2	-0.4	-0.065
Graphic arts and reproduction of recorded media	82.2	-2.2	-2.2	-0.042
Manufacture of coke and refined petroleum products	104.3	1.8	0.0	0.032
Chemical Industry	102.9	5.6	3.7	0.336
Manufacture of pharmaceutical products	112.9	-1.9	-1.4	-0.074
Rubber and plastic material transformation industry	105.1	6.0	4.4	0.258
Manufacture of other non-metallic ore products	79.5	1.4	2.3	0.058
Metallurgy; manufacture of iron, steel and ferro-alloy products	103.4	4.3	4.3	0.165
Manufacture of metal products, except machinery and equipment	88.4	-2.8	-1.0	-0.227
Manufacture of computers, electronic and optical products	88.0	17.8	12.3	0.195
Manufacture of electrical material and equipment	97.2	0.5	1.9	0.015
Manufacture of machinery and equipment n.e.c.	110.7	-9.6	-4.3	-0.505
Manufacture of motor vehicles, trailers and semi-trailers	123.7	5.5	9.0	0.432
Manufacture of other transport equipment	98.6	2.6	-2.0	0.070
Manufacture of furniture.	76.1	1.4	-3.1	0.020
Other manufacturing industries	124.1	13.4	3.4	0.166
Repair and installation of machinery and equipment	86.7	-3.5	-0.5	-0.076
<b>D. Supply of electrical energy, gas, steam and air conditioning</b>	89.4	-0.8	-1.9	-0.112
<b>E. Water supply, activities, waste management and decontamination*</b>	79.6	-18.1	0.5	-0.451

\* It only includes Water collection, treatment and supply

(..) Data not available due to statistical secrecy.

## 5. General Industrial Production Indices: national and by Autonomous Community

	Index	Rate (%)	
		Annual	Year-to-date average
<b>NACIONAL</b>	<b>98.1</b>	<b>0.6</b>	<b>1.5</b>
Andalucía	86.4	-1.9	3.8
Aragón	109.0	14.4	5.0
Asturias, Principado de	96.3	-7.7	-1.8
Balears, Illes	93.4	4.4	-0.8
Canarias	101.3	1.8	-0.8
Cantabria	99.0	-1.6	-2.2
Castilla y León	99.9	5.2	7.4
Castilla-La Mancha	94.1	-3.4	0.5
Cataluña	106.7	1.8	1.3
Comunitat Valenciana	100.3	0.5	3.6
Extremadura	84.2	2.9	2.6
Galicia	87.2	-7.0	-4.6
Madrid, Comunidad de	87.1	-2.8	-1.4
Murcia, Región de	92.4	-0.3	0.4
Navarra, Comunidad Foral de	104.2	3.2	5.8
País Vasco	101.0	0.7	-0.2
Rioja, La	102.8	2.3	5.9

### More detailed information by Autonomous Community may be obtained at:

Andalucía	<a href="http://www.juntadeandalucia.es/institutodeestadisticaycartografia">www.juntadeandalucia.es/institutodeestadisticaycartografia</a>
Aragón	<a href="http://www.aragon.es/iaest/ipi">www.aragon.es/iaest/ipi</a>
Principado de Asturias	<a href="http://www.sadei.es">www.sadei.es</a>
Illes Balears	<a href="http://www.ibestat.caib.es">www.ibestat.caib.es</a>
Canarias	<a href="http://www.gobiernodecanarias.org/istac">www.gobiernodecanarias.org/istac</a>
Cantabria	<a href="http://www.icane.es">www.icane.es</a>
Castilla y León	<a href="http://www.jcyl.es/estadistica">www.jcyl.es/estadistica</a>
Castilla - La Mancha	<a href="http://www.jccm.es/estadistica">www.jccm.es/estadistica</a>
Cataluña	<a href="http://www.idescat.cat">www.idescat.cat</a>
Comunitat Valenciana	<a href="http://www.ive.es">www.ive.es</a>
Extremadura	<a href="http://estadistica.gobex.es">http://estadistica.gobex.es</a>
Galicia	<a href="http://www.ige.xunta.es">www.ige.xunta.es</a>
Comunidad de Madrid	<a href="http://www.madrid.org/iestadis">www.madrid.org/iestadis</a>
Región de Murcia	<a href="http://www.carm.es/econet">www.carm.es/econet</a>
La Rioja	<a href="http://www.larioja.org">www.larioja.org</a>

For further information see INEbase - [www.ine.es/en/](http://www.ine.es/en/)

All press releases at: [www.ine.es/en/prensa/prensa\\_en.htm](http://www.ine.es/en/prensa/prensa_en.htm)

**Press Office:** Telephone numbers: 91 583 93 63 / 94 08 – Fax: 91 583 90 87 - [gprensa@ine.es](mailto:gprensa@ine.es)

**Information Area:** Telephone number: 91 583 91 00 – Fax: 91 583 91 58 – [www.ine.es/infoine/?L=1](http://www.ine.es/infoine/?L=1)