

09 December 2020

Industrial Production Indices (IPI). Base 2015
October 2020. Provisional Data

After adjusting for seasonal and calendar effects, the monthly variation of the Industrial Production Index stood at 0.6%,

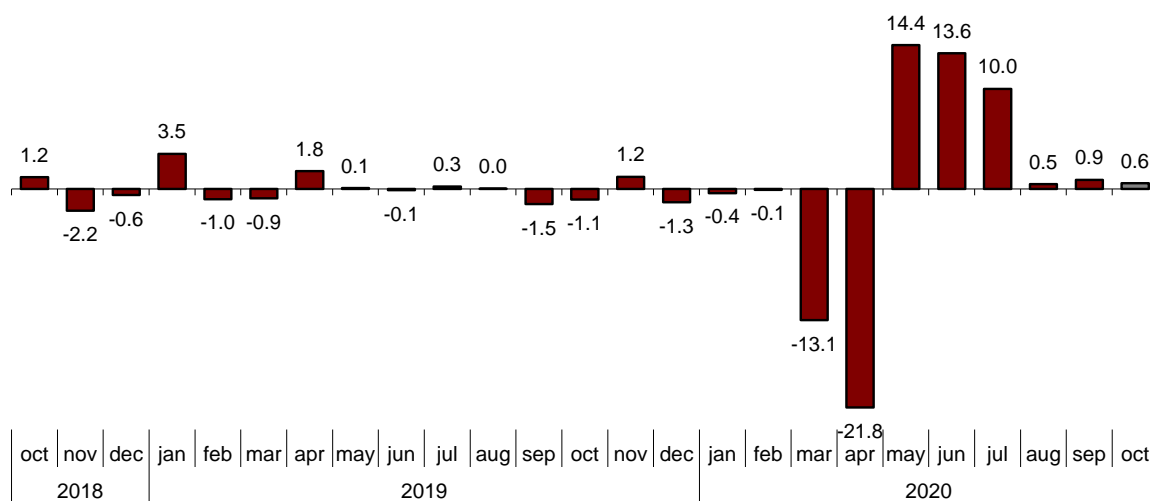
The annual rate of the Industrial Production Index stands at -1.6% in the series adjusted for seasonal and calendar effects and at -6.1% in the original series

Monthly evolution of industrial production

The monthly variation of the Industrial Production Index (IPI) between the months of October and September, after adjusting for seasonal and calendar effects, was 0.6%. This rate is 0.3 points lower than that observed in September.

General Industrial Production Index

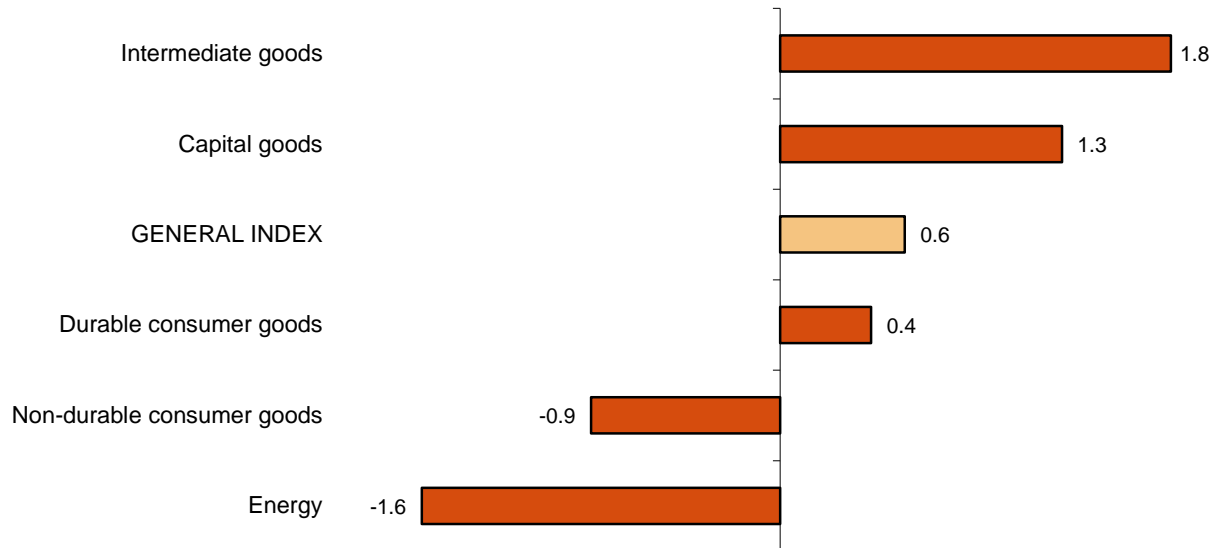
Adjusted for seasonal and calendar effects. Monthly rate (percentage)



By sectors, Intermediate goods (1.8%), Capital goods (1.3%) and Durable consumer goods (0.6%) showed positive monthly rates. On the other hand, Energy (-1.6%) and Non-durable consumer goods (-0.9%) showed negative monthly rates.

Industrial Production Indices: General and by economic destination

Adjusted for seasonal and calendar effects. October 2020. Monthly rate (percentage)



A more detailed analysis shows the branches of activity with the greatest and lowest monthly rates in October.

Branches of activity with the highest monthly rates of the industrial production index adjusted for seasonal and calendar effects

Activity (Division from CNAE 2009)	Monthly rate (%)
Tobacco industry	19.9
Manufacture of motor vehicles, trailers and semi-trailers	13.2
Leather and footwear industry	8.7

Branches of activity with the lowest monthly rates of the industrial production index adjusted for seasonal and calendar effects

Activity (Division from CNAE 2009)	Monthly rate (%)
Manufacture of garments	-14.9
Other mining and quarrying	-3.7
Other manufacturing industries	-2.5

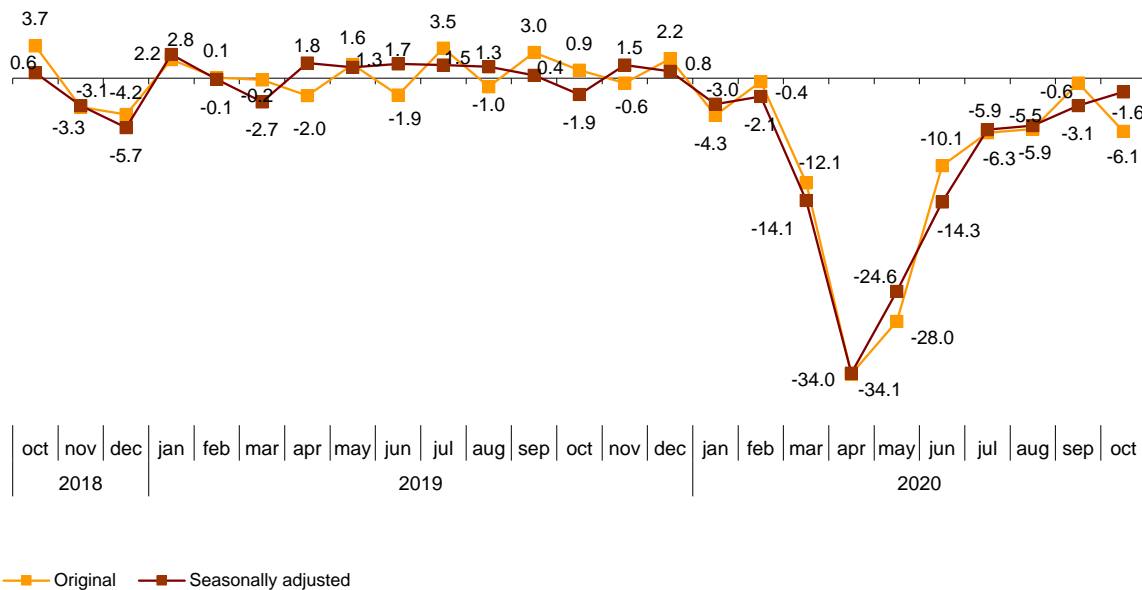
Annual evolution of industrial production

The Industrial Production Index, adjusted for seasonal and calendar effects, recorded a variation rate of -1.6% in October, as compared to the same month of the previous year. This rate is 1.5 points higher than that registered in September.

The original IPI series experienced an annual variation of -6.1%. This rate is 5.5 points lower than that of September.

General Industrial Production Index

Annual rate (percentage)



By sectors, *Intermediate goods* (1.6%) and *Durable consumer goods* (0.7%) showed positive annual rates. On the other hand *Capital goods* (-4.0%), *Non-durable consumer goods* (-3.9%) and *Energy* (-2.3%) showed negative annual rates.

Annual rates of industrial production indices: General and by economic destination of the goods

	Original index Annual rate (%)	Seasonally adjusted index Annual rate (%)
General Index	-6.1	-1.6
Consumer goods	-8.3	-2.3
- Durable consumer goods	-6.5	0.7
- Non-durable consumer goods	-8.4	-3.9
Capital goods	-9.6	-4.0
Intermediate goods	-2.8	1.6
Energy	-3.8	-2.3

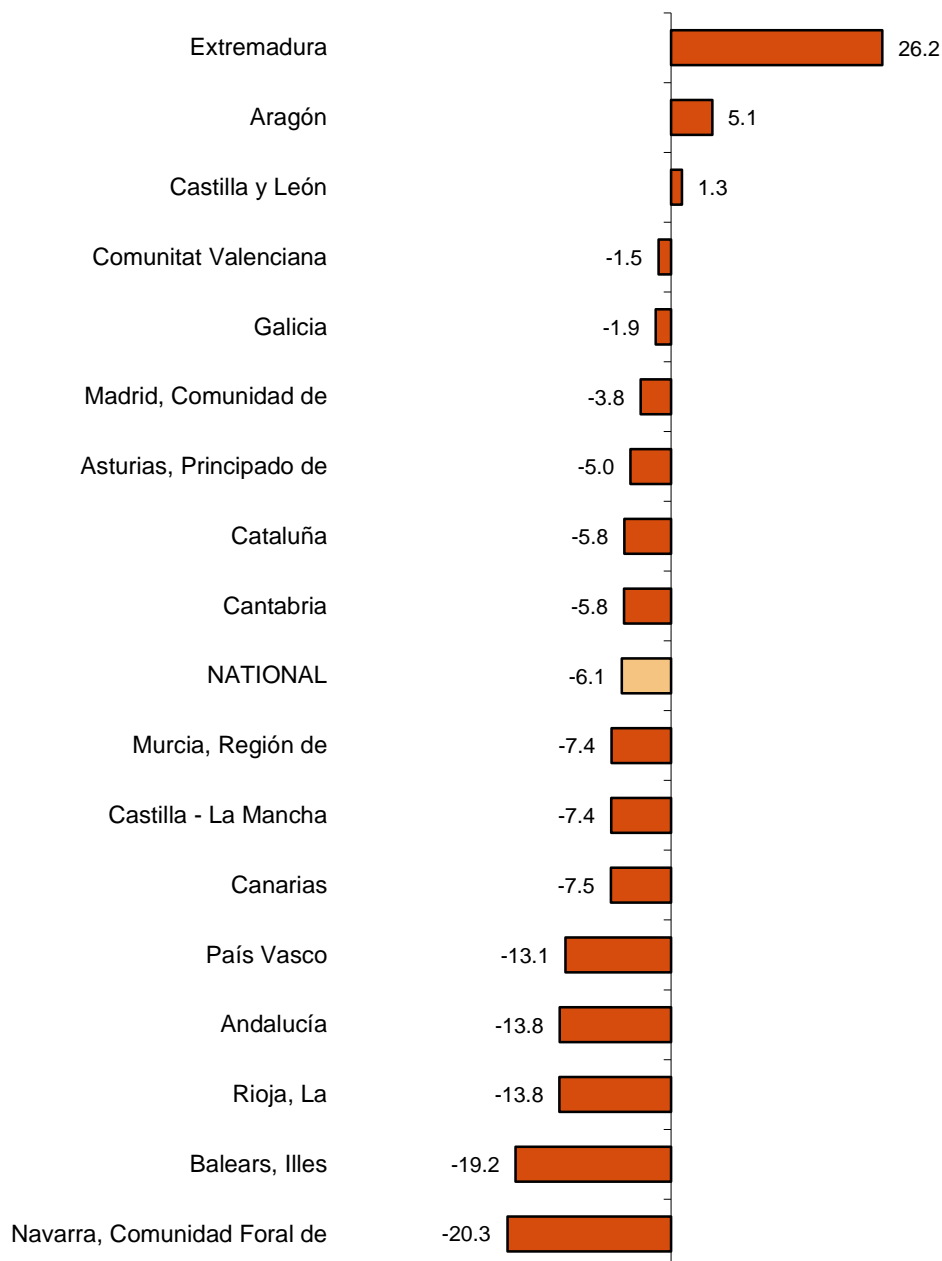
Results by Autonomous Communities. Annual variation rates of industrial production. Original series

The annual rate of industrial production increased as compared to October 2019 in three Autonomous Communities and decreased in the other 14.

The largest increases were recorded in Extremadura (26.2%), Aragón (5.1%) and Castilla y León (1.3%). The largest decreases were recorded in Comunidad Foral de Navarra (-20.3%), Illes Balears (-19.2%) and La Rioja (-13.8%).

General indices: national and by Autonomous Communities

October 2020. Annual rate (percentage)



Data Review and Update

Coinciding with today's publication, the INE has updated the data of the IPI series corresponding to the last two months. In the case of the series adjusted for calendar effects and for seasonal and calendar effects, the series is revised from the beginning, following the INE standard. The results are available at INEBase.

Methodological note

The Industrial Production Index (IPI) is a short-term indicator that measures the monthly evolution of the productive activity of the industrial branches, excluding construction, contained in the National Classification of Economic Activities 2009 (CNAE-2009). It therefore investigates the activities included in sections B, C, D and division 36: Water collection, treatment and supply, from section E of the CNAE-2009.

The IPI measures the joint evolution of quantity and quality, eliminating the influence of prices.

Type of survey: monthly continuous survey.

Base year: 2015.

Population scope: industrial establishments whose main activity is included in sections B, C, D and division 36 of the CNAE-2009.

Geographical scope: the entire national territory.

Sample size: 11,500 industrial establishments and more than 1,100 products.

Collection method: completion of the questionnaire by the respondent using one of the following methods: internet (IRIA system), e-mail, fax, telephone or by postal mail.

For more information the methodology can be accessed at:

https://www.ine.es/en/daco/daco43/metoipi15_en.pdf

And the standardised methodological report at:

<https://www.ine.es/dynt3/metadatos/en/RespuestaDatos.html?oe=30050>

INE statistics are produced in accordance with the Code of Good Practice for European Statistics, which is the basis for the institution's quality policy and strategy. For more information see the section on [Quality at INE and the Code of Best Practices](#) on the INE webpage.

For further information see **INEbase:** www.ine.es/en/ Twitter: [@es_ine](https://twitter.com/es_ine)

All press releases at: www.ine.es/en/prensa/prensa_en.htm

Press Office: Telephone numbers: (+34) 91 583 93 63 /94 08 – gprensa@ine.es

Information Area: Telephone number: (+34) 91 583 91 00 – www.ine.es/infoine/?L=1

Industrial Production Indices. Base 2015

October 2020

Provisional Data

1. Industrial Production Indices: General and by economic destination adjusted for seasonal and calendar effects

	Index	Rate (%)		
		Monthly	Annual	Year-to-date average
General Index	102.9	0.6	-1.6	-10.8
Consumer goods	100.1	-0.5	-2.3	-8.2
- Durable consumer goods	103.6	0.4	0.7	-15.9
- Non-durable consumer goods	98.5	-0.9	-3.9	-7.0
Capital goods	108.6	1.3	-4.0	-17.5
Intermediate goods	107.9	1.8	1.6	-9.9
Energy	94.1	-1.6	-2.3	-7.5

2. Industrial Production Indices: General and by economic destination adjusted for seasonal and calendar effects

	Index	Rate (%)	
		Annual	Year-to-date average
General Index	108.8	-1.2	-11.0
Consumer goods	106.9	-2.1	-8.2
- Durable consumer goods	115.3	0.9	-16.6
- Non-durable consumer goods	106.1	-3.1	-7.5
Capital goods	118.3	-3.8	-18.1
Intermediate goods	115.8	2.3	-10.2
Energy	91.9	-2.3	-7.4

3. Industrial Production Indices: General and by economic destination. Original series

	Index	Rate (%)		Repercussion Annual
		Annual	Year-to-date average	
General Index	107.6	-6.1	-10.9	
Consumer goods	105.3	-8.3	-8.2	-2.153
- Durable consumer goods	113.3	-6.5	-16.5	-0.138
- Non-durable consumer goods	104.7	-8.4	-7.6	-2.015
Capital goods	116.6	-9.6	-17.9	-2.414
Intermediate goods	114.5	-2.8	-10.1	-0.855
Energy	91.6	-3.8	-7.1	-0.686

**4. Industrial Production Indices: General and by branches of activity (CNAE 2009).
Original series**

	Index	Rate (%)		Repercussion Annual
		Annual	Year-to-date average	
General Index	107.6	-6.1	-10.9	
B. Mining and quarrying industries	88.6	-16.5	-7.0	-0.106
Extraction of anthracite, coal and lignite
National crude petroleum and natural gas
Extraction of metallic ores
Other mining and quarrying	104.5	-7.2	-9.6	-0.040
C. Manufacturing industry	111.5	-6.8	-12.0	-5.664
Food Industry	105.9	-8.0	-5.7	-0.958
Manufacture of beverages.	96.9	-15.5	-10.4	-0.509
Tobacco industry.
Textile industry	114.9	4.1	-12.1	0.043
Manufacture of garments	117.4	-11.1	-27.9	-0.119
Leather and footwear industry	63.0	-29.7	-27.6	-0.218
Manufacture of wood and of products of wood and cork, except furniture; basketmaking and wickerwork	122.7	1.8	-14.6	0.024
Manufacture of paper and paper-products	102.6	-1.5	-4.5	-0.034
Graphic arts and reproduction of recorded media	84.2	-6.7	-20.2	-0.087
Manufacture of coke and refined petroleum products	88.5	-15.6	-16.5	-0.341
Chemical Industry	112.5	-0.4	-3.5	-0.027
Manufacture of pharmaceutical products	121.9	-4.0	1.9	-0.160
Rubber and plastic material transformation industry	124.2	4.6	-9.8	0.215
Manufacture of other non-metallic ore products	118.9	-2.5	-11.3	-0.098
Metallurgy; manufacture of iron, steel and ferro-alloy products	104.0	-4.9	-16.0	-0.159
Manufacture of metal products, except machinery and equipment	114.8	-8.5	-15.5	-0.735
Manufacture of computers, electronic and optical products	122.4	-10.0	-4.5	-0.125
Manufacture of electrical material and equipment	119.9	-2.8	-4.8	-0.085
Manufacture of machinery and equipment n.e.c.	119.2	-20.0	-14.0	-1.194
Manufacture of motor vehicles, trailers and semi-trailers	120.1	4.2	-23.4	0.345
Manufacture of other transport equipment	105.9	-20.8	-19.0	-0.663
Manufacture of furniture.	114.9	-11.6	-20.1	-0.168
Other manufacturing industries	112.2	-13.7	-22.9	-0.172
Repair and installation of machinery and equipment	113.0	-14.8	-13.7	-0.471
D. Supply of electrical energy, gas, steam and air conditioning	90.3	-2.7	-6.2	-0.358
E. Water supply, activities, waste management and decontamination*	103.5	0.7	-4.2	0.019

* It only includes Water collection, treatment and supply

(..) Data not available due to statistical secrecy.

5. Industrial production indices: national and by Autonomous Community. Original series

	Index	Rate (%)	
		Annual	Year-to-date average
National	107.6	-6.1	-10.9
Andalucía	95.8	-13.8	-13.2
Aragón	116.6	5.1	-10.2
Asturias, Principado de	98.5	-5.0	-15.5
Balears, Illes	73.2	-19.2	-22.6
Canarias	92.0	-7.5	-11.0
Cantabria	114.5	-5.8	-11.9
Castilla y León	104.2	1.3	-12.0
Castilla-La Mancha	107.0	-7.4	-9.4
Cataluña	109.3	-5.8	-11.4
Comunitat Valenciana	113.5	-1.5	-8.3
Extremadura	108.7	26.2	-4.9
Galicia	109.6	-1.9	-9.7
Madrid, Comunidad de	110.1	-3.8	-8.1
Murcia, Región de	113.7	-7.4	-3.2
Navarra, Comunidad Foral de	114.6	-20.3	-11.7
País Vasco	106.6	-13.1	-15.3
Rioja, La	91.7	-13.8	-14.9

More detailed information by Autonomous Community may be obtained at:

Andalucía	www.juntadeandalucia.es/institutodeestadisticaycartografia
Aragón	www.aragon.es/iaest/ipi
Principado de Asturias	www.sadei.es
Illes Balears	www.ibestat.caib.es
Canarias	www.gobiernodecanarias.org/istac
Cantabria	www.icane.es
Castilla y León	www.jcyl.es/estadistica
Castilla - La Mancha	www.jccm.es/estadistica
Cataluña	www.idescat.cat
Comunitat Valenciana	www.ive.es
Extremadura	http://estadistica.juntaex.es
Galicia	www.ige.xunta.es
Comunidad de Madrid	www.madrid.org/iestadis
Región de Murcia	http://econet.carm.es
La Rioja	www.larioja.org