

10 December 2021

Industrial Production Indices (IPI). Base 2015
October 2021. Provisional data

The monthly variation of the Industrial Production Index is -0.4% after adjusting for seasonal and calendar effects

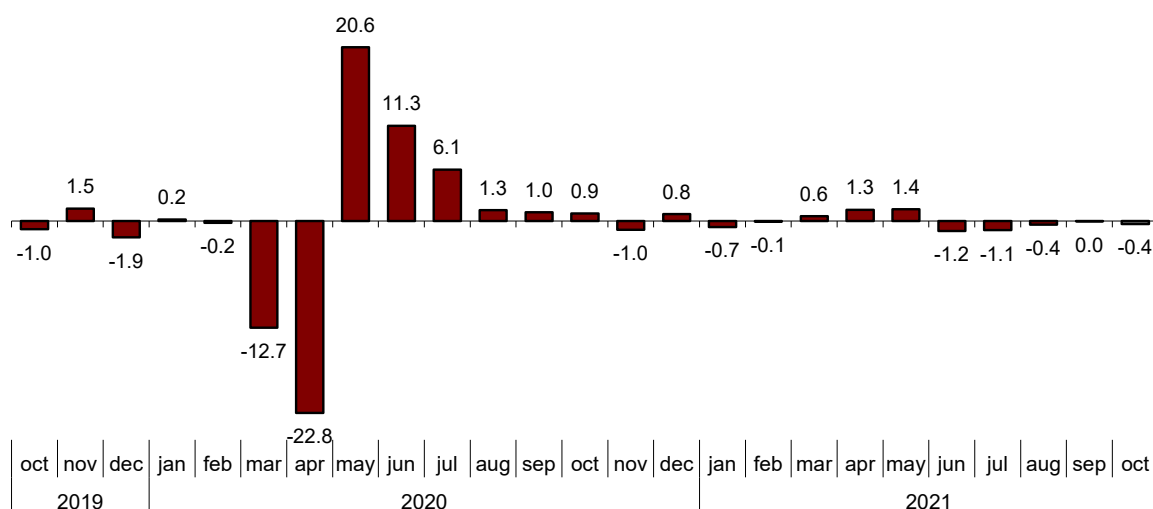
The annual rate of the Industrial Production Index stands at -0.9% in the series adjusted for seasonal and calendar effects and at -3.3% in the original series

Monthly evolution of industrial production

The monthly variation of the Industrial Production Index (IPI) between the months of October and September, after adjusting for seasonal and calendar effects, was -0.4%. This rate is 0.4 points lower than that observed in September.

General Industrial Production Index

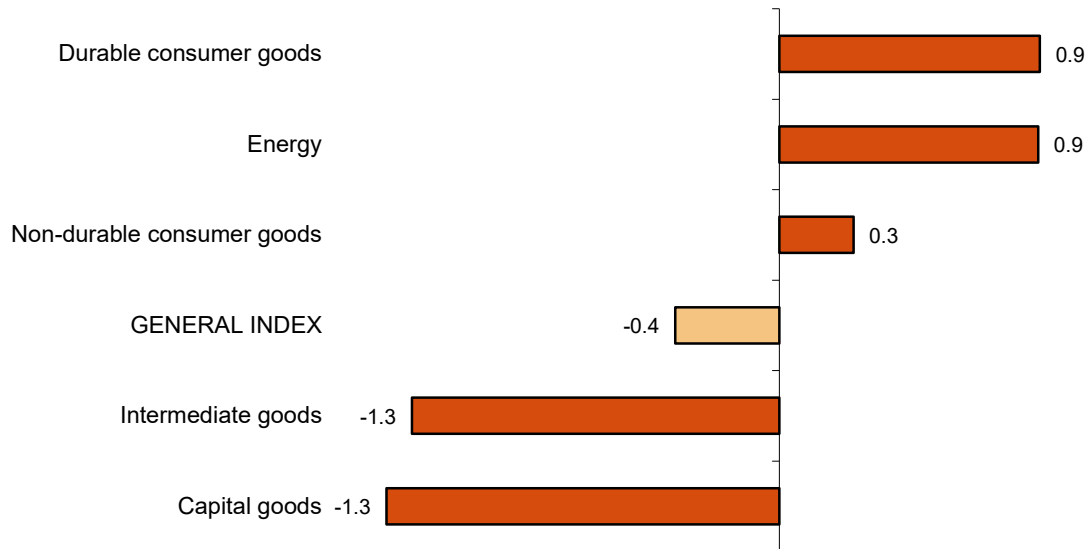
Adjusted for seasonal and calendar effects Monthly rate (percentage)



By sectors, *Durable consumer goods* (0.9%), *Energy* (0.9%) and *Non-durable consumer goods* (0.3%) showed positive monthly rates. On the other hand, *Capital goods* (–1.3%) and *Intermediate goods* (–1.3%) showed negative monthly rates.

Industrial Production Indices: General and by economic destination

Adjusted for seasonal and calendar effects October 2021. Monthly rate (percentage)



A more detailed analysis shows the branches of activity with the greatest and lowest monthly rates in October.

Branches of activity with the highest monthly rates of the industrial production index adjusted for seasonal and calendar effects

Activity (Division from CNAE 2009)	Monthly rate (%)
Manufacture of motor vehicles, trailers and semi-trailers	9.3
Repair and installation of machinery and equipment	6.5
Extraction of anthracite, coal and lignite	3.3

Branches of activity with the lowest monthly rates of the industrial production index adjusted for seasonal and calendar effects

Activity (Division from CNAE 2009)	Monthly rate (%)
Manufacture of wood and of products of wood and cork, except furniture; basketmaking and wickerwork	-14.2
Manufacture of pharmaceutical products	-8.4
Manufacture of electrical material and equipment	-4.8

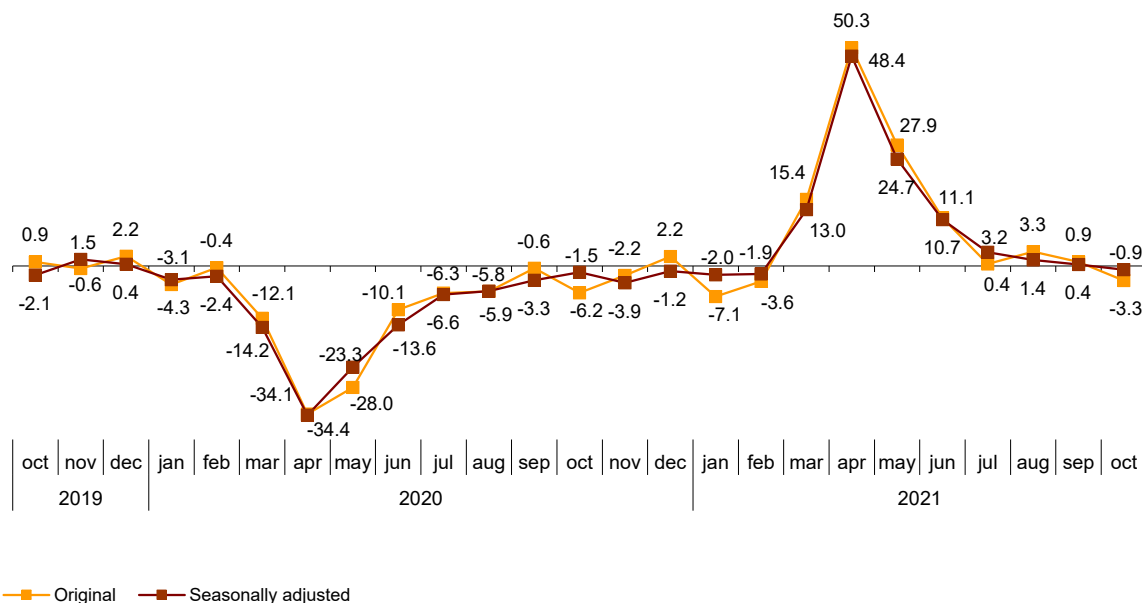
Annual evolution of industrial production

The Industrial Production Index, adjusted for seasonal and calendar effects, recorded a variation rate of -0.9% in October, as compared to the same month of the previous year. This rate is 1.3 points lower than that registered in September.

The original IPI series experienced an annual variation of -3.3%. This rate is 4.2 points lower than that of September.

General Industrial Production Index

Annual rate (percentage)



By sectors, *Non-durable consumer goods* (5.0%), *Durable consumer goods* (1.4%) and *Energy* (1.0%) showed positive annual rates. On the other hand, *Capital goods* (-8.9%) and *Intermediate goods* (-1.0%) showed negative annual rates.

Annual rates of industrial production indices: General and by economic destination of the goods

	Original index Annual rate (%)	Seasonally adjusted index Annual rate (%)
General Index	-3.3	-0.9
Consumer goods	2.1	4.8
- Durable consumer goods	-2.1	1.4
- Non-durable consumer goods	2.5	5.0
Capital goods	-11.7	-8.9
Intermediate goods	-3.5	-1.0
Energy	0.4	1.0

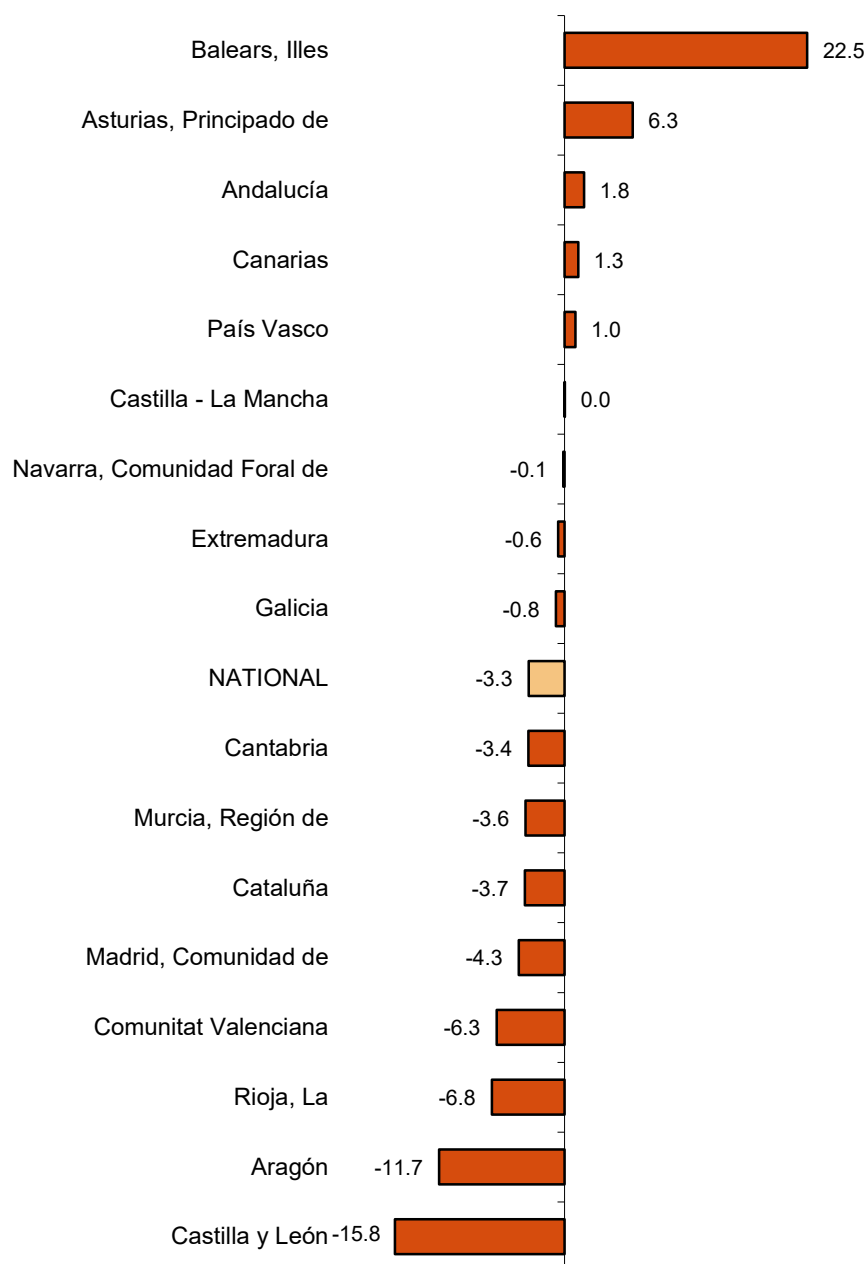
Results by Autonomous Communities. Annual variation rates of industrial production. Original series

The annual rate of industrial production increased as compared to October 2020 in six Autonomous Communities and decreased in the other 11.

The largest increases were recorded in Illes Balears (22.5%), Principado de Asturias (6.3%) and Andalucía (1.8%). The largest decreases were recorded in Castilla y León (-15.8%), Aragón (-11.7%) and La Rioja (-6.8%).

General indices: national and by Autonomous Communities

October 2021. Annual rate (percentage)



Data Review and Update

Coinciding with today's publication, the INE has updated the data of the IPI series corresponding to the last two months. In the case of the series adjusted for calendar effects and for seasonal and calendar effects, the series is revised from the beginning, following the INE standard. The results are available at INEBase.

Methodological note

The Industrial Production Index (IPI) is a short-term indicator that measures the monthly evolution of the productive activity of the industrial branches, excluding construction, contained in the National Classification of Economic Activities 2009 (CNAE-2009). It therefore investigates the activities included in sections B, C, D and division 36: Water collection, treatment and supply, from section E of the CNAE-2009.

The IPI measures the joint evolution of quantity and quality, eliminating the influence of prices.

Type of survey: monthly continuous survey.

Base year: 2015.

Population scope: industrial establishments whose main activity is included in sections B, C, D and division 36 of the CNAE-2009.

Geographical scope: the entire national territory.

Sample size: 11,500 industrial establishments and more than 1,100 products.

Collection method: completion of the questionnaire by the respondent using one of the following methods: internet (IRIA system), e-mail, fax, telephone or by postal mail.

For more information the methodology can be accessed at:

https://www.ine.es/en/daco/daco43/metoipi15_en.pdf

And the standardised methodological report at:

<https://www.ine.es/dynt3/metadatos/en/RespuestaDatos.html?oe=30050>

INE statistics are produced in accordance with the Code of Good Practice for European Statistics, which is the basis for the institution's quality policy and strategy. For more information see the section on [Quality at INE and the Code of Best Practices](#) on the INE website.

For further information see **INEbase**: www.ine.es/en/ Twitter: [@es_ine](https://twitter.com/es_ine)

All press releases at: www.ine.es/en/prensa/prensa_en.htm

Press Office: Telephone numbers: (+34) 91 583 93 63 /94 08 – gprensa@ine.es

Information Area: Telephone number: (+34) 91 583 91 00 – www.ine.es/infoine/?L=1

Industrial Production Indices: Base 2015

October 2021

Provisional Data

1. Industrial Production Indices: General and by economic destination adjusted for seasonal and calendar effects

	Index	Rate (%)		
		Monthly	Annual	Year-to-date average
General Index	101.6	-0.4	-0.9	8.0
Consumer goods	104.3	0.3	4.8	7.1
- Durable consumer goods	104.1	0.9	1.4	20.6
- Non-durable consumer goods	103.4	0.3	5.0	5.9
Capital goods	98.3	-1.3	-8.9	8.5
Intermediate goods	107.7	-1.3	-1.0	11.7
Energy	94.7	0.9	1.0	2.7

2. Industrial Production Indices: General and by economic destination adjusted for seasonal and calendar effects

	Index	Rate (%)	
		Annual	Year-to-date average
General Index	107.7	-1.0	8.1
Consumer goods	112.6	5.2	7.2
- Durable consumer goods	116.8	1.3	21.1
- Non-durable consumer goods	111.6	5.1	6.1
Capital goods	107.1	-9.1	8.8
Intermediate goods	114.2	-1.4	12.2
Energy	92.8	1.0	2.5

3. Industrial Production Indices: General and by economic destination. Original series

	Index	Rate (%)		Repercussion Annual
		Annual	Year-to-date average	
General Index	103.9	-3.3	7.6	
Consumer goods	107.7	2.1	6.8	0.533
- Durable consumer goods	110.9	-2.1	20.3	-0.045
- Non-durable consumer goods	107.4	2.5	5.8	0.578
Capital goods	102.4	-11.7	8.1	-2.810
Intermediate goods	110.5	-3.5	11.7	-1.133
Energy	91.9	0.4	2.0	0.069

4. Industrial Production Indices: General and by branches of activity (CNAE 2009). Original series

	Index	Rate (%)		Repercussion Annual
		Annual	Year-to-date average	
General Index	103.9	-3.3	7.6	
B. Mining and quarrying industries	96.2	11.4	9.0	0.064
Extraction of anthracite, coal and lignite
National crude petroleum and natural gas
Extraction of metallic ores
Other mining and quarrying	114.4	12.4	17.8	0.066
C. Manufacturing industry	107.2	-3.8	9.0	-3.143
Food Industry	108.6	3.0	3.4	0.348
Manufacture of beverages.	112.3	12.2	12.1	0.375
Tobacco industry.
Textile industry	99.0	-13.5	11.5	-0.156
Manufacture of garments	142.2	23.4	27.3	0.232
Leather and footwear industry	70.7	14.2	8.3	0.077
Manufacture of wood and of products of wood and cork, except furniture; basketmaking and wickerwork	126.1	6.2	22.4	0.085
Manufacture of paper and paper-products	103.7	1.2	7.1	0.029
Graphic arts and reproduction of recorded media	81.1	-3.8	5.4	-0.048
Manufacture of coke and refined petroleum products	103.5	16.9	4.8	0.332
Chemical Industry	112.4	-0.6	7.3	-0.037
Manufacture of pharmaceutical products	112.3	-7.7	2.6	-0.316
Rubber and plastic material transformation industry	111.3	-10.1	11.0	-0.528
Manufacture of other non-metallic ore products	124.4	4.3	18.7	0.179
Metallurgy; manufacture of iron, steel and ferro-alloy products	104.2	0.1	16.5	0.002
Manufacture of metal products, except machinery and equipment	108.1	-6.2	11.1	-0.521
Manufacture of computers, electronic and optical products	113.7	-6.8	4.9	-0.082
Manufacture of electrical material and equipment	103.3	-14.0	9.0	-0.440
Manufacture of machinery and equipment n.e.c.	125.3	5.7	17.0	0.288
Manufacture of motor vehicles, trailers and semi-trailers	77.5	-35.1	2.9	-3.187
Manufacture of other transport equipment	104.5	-0.5	0.4	-0.013
Manufacture of furniture.	120.1	4.2	23.6	0.057
Other manufacturing industries	124.0	10.3	22.9	0.119
Repair and installation of machinery and equipment	116.9	2.9	6.4	0.085
D. Supply of electrical energy, gas, steam and air conditioning	89.0	-1.4	2.1	-0.187
E. Water supply, activities, waste management and decontamination*	100.9	-2.7	-0.7	-0.075

* It only includes Water collection, treatment and supply

(..) Data not available due to statistical secrecy.

5. Industrial production indices: national and by Autonomous Community. Original series

	Index	Rate (%)	
		Annual	Year-to-date average
National	103.9	-3.3	7.6
Andalucía	98.1	1.8	3.9
Aragón	101.3	-11.7	3.9
Asturias, Principado de	104.6	6.3	15.9
Balears, Illes	89.2	22.5	11.3
Canarias	93.0	1.3	2.5
Cantabria	111.0	-3.4	12.7
Castilla y León	87.8	-15.8	7.0
Castilla-La Mancha	108.5	0.0	5.1
Cataluña	105.1	-3.7	9.2
Comunitat Valenciana	106.4	-6.3	8.3
Extremadura	108.3	-0.6	10.7
Galicia	108.1	-0.8	10.2
Madrid, Comunidad de	105.6	-4.3	5.1
Murcia, Región de	107.4	-3.6	0.7
Navarra, Comunidad Foral de	114.2	-0.1	11.3
País Vasco	107.5	1.0	9.8
Rioja, La	87.9	-6.8	7.4

More detailed information by Autonomous Community may be obtained at:

Andalucía	www.juntadeandalucia.es/institutodeestadisticaycartografia
Aragón	www.aragon.es/iaest/ipi
Principado de Asturias	www.sadei.es
Illes Balears	www.ibestat.caib.es
Canarias	www.gobiernodecanarias.org/istac
Cantabria	www.icane.es
Castilla y León	www.jcyl.es/estadistica
Castilla - La Mancha	www.jccm.es/estadistica
Cataluña	www.idescat.cat
Comunitat Valenciana	www.ive.es
Extremadura	http://estadistica.juntaex.es
Galicia	www.ige.xunta.es
Comunidad de Madrid	www.madrid.org/iestadis
Región de Murcia	http://econet.carm.es
La Rioja	www.larioja.org