

9 December 2022

Industrial Production Indices (IPI). Base 2015
October 2022. Provisional Data

The monthly variation of the Industrial Production Index stands at -0.4%, after adjusting for seasonal and calendar effects

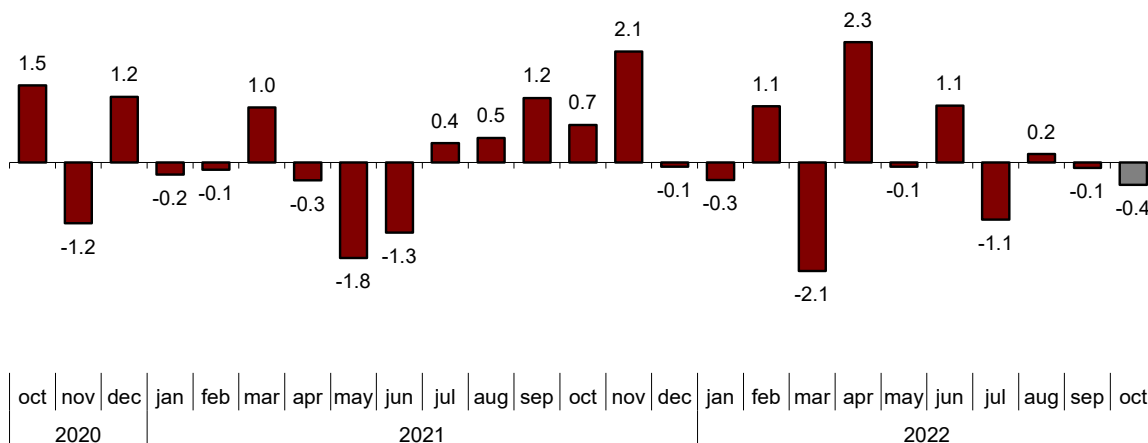
The annual rate of the Industrial Production Index stands at 2.5% in the series adjusted for seasonal and calendar effects and at 2.2% in the original series

Monthly evolution of industrial production

The monthly variation of the Industrial Production Index (IPI) between the months of October and September, after adjusting for seasonal and calendar effects, was -0.4%. This rate is 0.3 points lower than that observed in September.

General Industrial Production Index

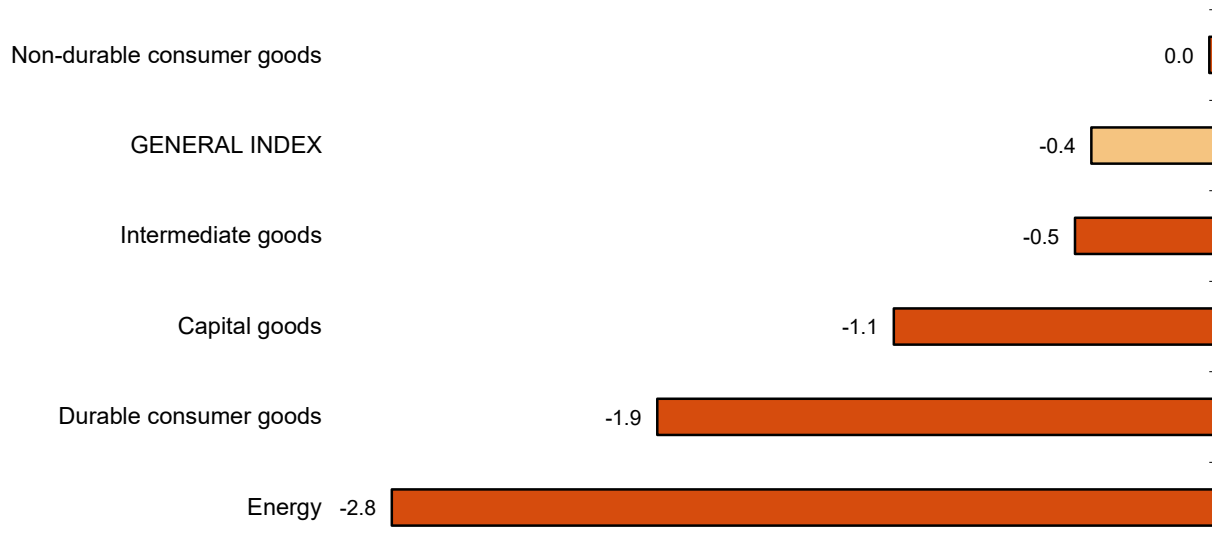
Adjusted for seasonal and calendar effects. Monthly rate (percentage)



All sectors showed negative monthly rates. It is worth highlighting the decrease in *Energy* (–2.8%) followed by *Durable consumer goods* (–1.9%).

Industrial Production Indices: General and by economic destination

Adjusted for seasonal and calendar effects October 2022. Monthly rate (percentage)



A more detailed analysis shows the branches of activity with the greatest and lowest monthly rates in October.

Branches of activity with the highest monthly rates of the industrial production index adjusted for seasonal and calendar effects

Activity (Division from CNAE 2009)	Monthly rate (%)
Other mining and quarrying	20.9
Extraction of anthracite, coal and lignite	11.6
Graphic arts and reproduction of recorded media	6.8

Branches of activity with the lowest monthly rates of the industrial production index adjusted for seasonal and calendar effects

Activity (Division from CNAE 2009)	Monthly rate (%)
Manufacture of beverages	-7.2
Manufacture of coke and refined petroleum products	-7.1
Manufacture of wood and of products of wood and cork, except furniture; basketmaking and wickerwork	-6.3

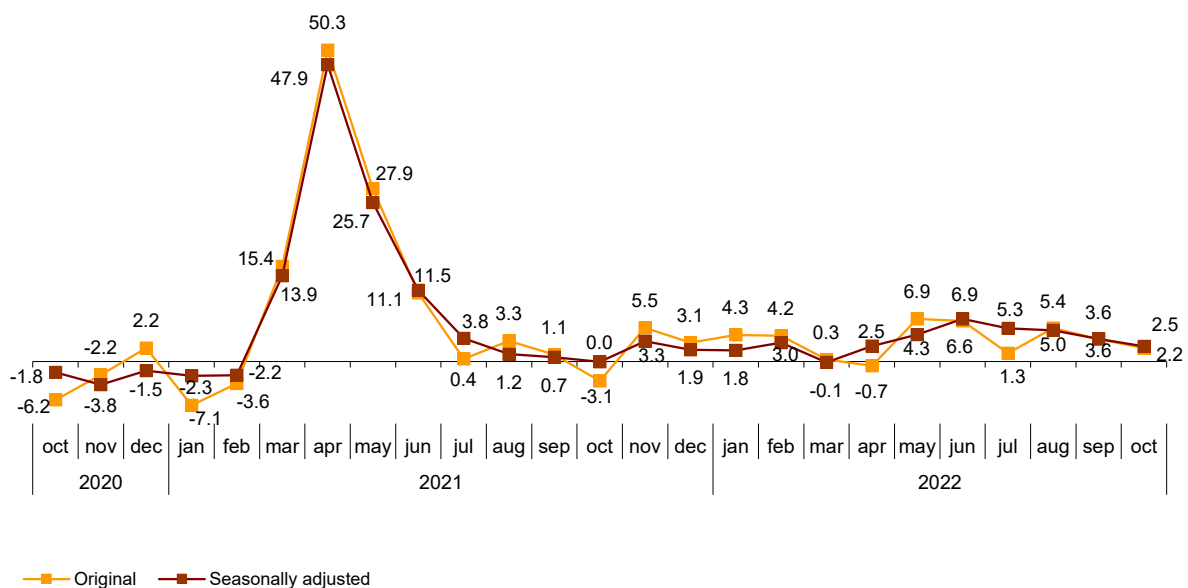
Annual evolution of industrial production

The Industrial Production Index, adjusted for seasonal and calendar effects, recorded a variation rate of 2.5% in October, as compared to the same month of the previous year. This rate is 1.1 points lower than that registered in September.

The original IPI series experienced an annual variation of 2.2%. This rate is 1.4 points lower than that of September.

General Industrial Production Index

Annual rate (percentage)



By sectors, *Capital goods* (11.0%), *Energy* (3.6%) and *Non-durable consumer goods* (2.4%) showed positive annual rates. On the other hand, *Intermediate goods* (-2.9%) and *Durable consumer goods* (-1.9%) showed negative annual rates.

Annual rates of industrial production indices: General and by economic destination of the goods

	Original index Annual rate (%)	Seasonally adjusted index Annual rate (%)
General Index	2.2	2.5
Consumer goods	1.0	1.2
- Durable consumer goods	-3.4	-1.9
- Non-durable consumer goods	1.4	2.4
Capital goods	10.6	11.0
Intermediate goods	-3.4	-2.9
Energy	3.5	3.6

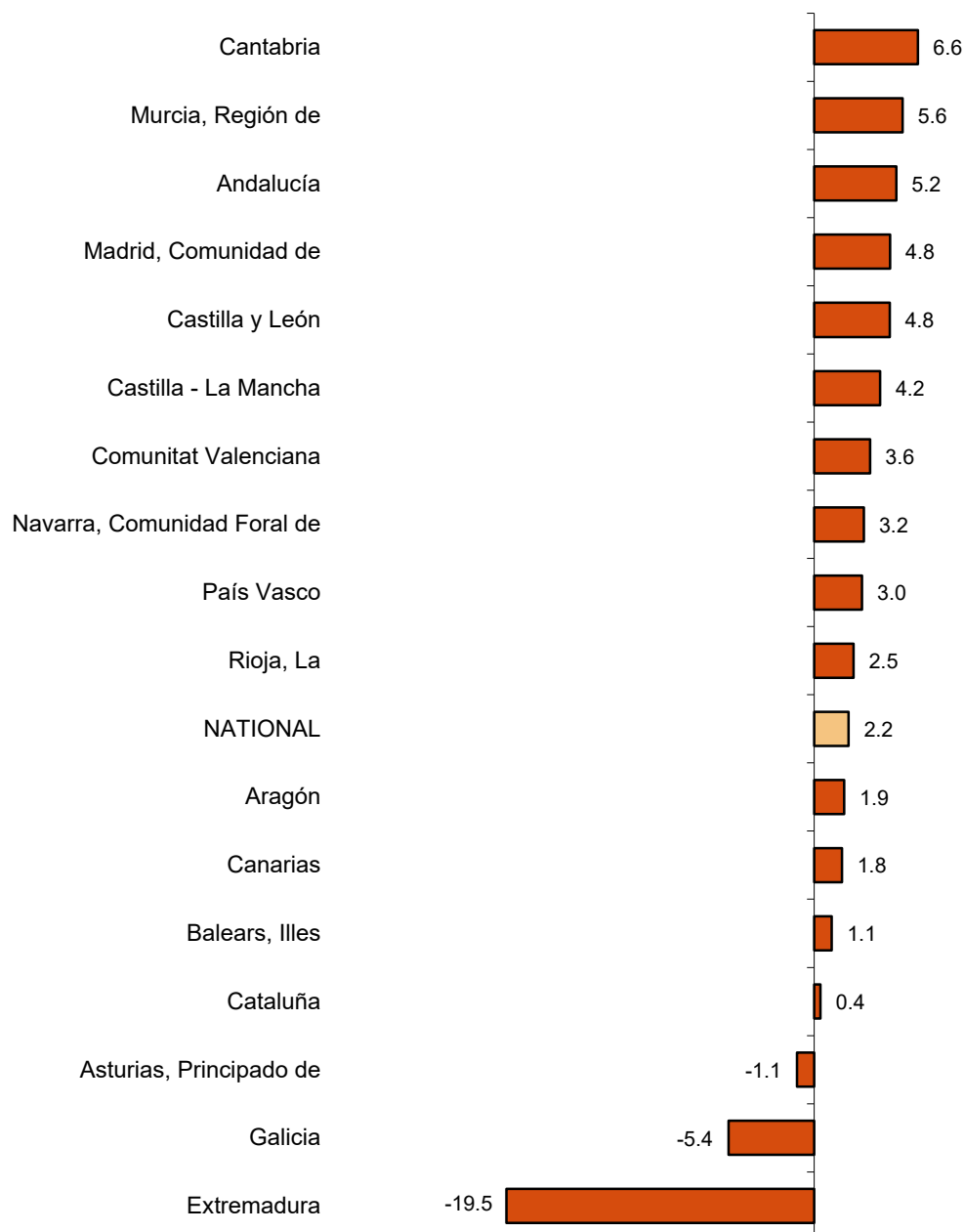
Results by Autonomous Communities. Annual variation rates of industrial production. Original series

The annual rate of industrial production increased as compared to October 2021 in 14 Autonomous Communities and decreased in the other four.

The largest decreases were recorded in Extremadura (-19.5%), Galicia (-5.4%) and Principado de Asturias (-1.1%). The largest increases were recorded in Cantabria (6.6%), Región de Murcia (5.6%) and Andalucía (5.2%).

General indices: national and by Autonomous Communities

October 2022. Annual rate (percentage)



Data Review and Update

Coinciding with today's publication, the INE has updated the data of the IPI series corresponding to the last two months. In the case of the series adjusted for calendar effects and for seasonal and calendar effects, the series is revised from the beginning, following the INE standard. The results are available at INEBase.

Methodological note

The Industrial Production Index (IPI) is a short-term indicator that measures the monthly evolution of the productive activity of the industrial branches, excluding construction, contained in the National Classification of Economic Activities 2009 (CNAE-2009). It therefore investigates the activities included in sections B, C, D and division 36: Water collection, treatment and supply, from section E of the CNAE-2009.

The IPI measures the joint evolution of quantity and quality, eliminating the influence of prices.

Type of survey: monthly continuous survey.

Base year: 2015.

Population scope: industrial establishments whose main activity is included in sections B, C, D and division 36 of the CNAE-2009.

Geographical scope: the entire national territory.

Sample size: 11,500 industrial establishments and more than 1,100 products.

Collection method: completion of the questionnaire by the respondent using one of the following methods: internet (IRIA system), e-mail, fax, telephone or by postal mail.

For more information the methodology can be accessed at:

https://www.ine.es/en/daco/daco43/metoipi15_en.pdf

And the standardised methodological report at:

<https://www.ine.es/dynt3/metadatos/en/RespuestaDatos.html?oe=30050>

INE statistics are produced in accordance with the Code of Good Practice for European Statistics, which is the basis for the institution's quality policy and strategy. For more information see the section on [Quality at INE and the Code of Best Practices](#) on the INE website.

For further information see **INEbase:** www.ine.es/en/ Twitter: [@es_ine](https://twitter.com/es_ine)

All press releases at: www.ine.es/en/prensa/prensa_en.htm

Press office: Telephone numbers: (+34) 91 583 93 63 /94 08 – gprensa@ine.es

Information Area: Telephone number: (+34) 91 583 91 00 – www.ine.es/infoine/?L=1

Industrial Production Indices. Base 2015

October 2022

Provisional Data

1. Industrial Production Indices: General and by economic destination adjusted for seasonal and calendar effects

	Index	Rate (%)		
		Monthly	Annual	Year-to-date average
General Index	105.9	-0.4	2.5	3.5
Consumer goods	107.0	-0.4	1.2	4.7
- Durable consumer goods	105.7	-1.9	-1.9	4.0
- Non-durable consumer goods	107.4	0.0	2.4	4.8
Capital goods	110.7	-1.1	11.0	6.0
Intermediate goods	105.7	-0.5	-2.9	-1.1
Energy	99.2	-2.8	3.6	6.6

2. Industrial Production Indices: General and by economic destination adjusted for seasonal and calendar effects

	Index	Rate (%)	
		Annual	Year-to-date average
General Index	110.2	2.2	3.5
Consumer goods	114.5	1.0	4.7
- Durable consumer goods	113.8	-3.4	4.3
- Non-durable consumer goods	114.2	1.3	4.7
Capital goods	118.5	10.6	6.0
Intermediate goods	110.6	-3.4	-1.0
Energy	96.1	3.5	6.7

3. Industrial Production Indices: General and by economic destination. Original series

	Index	Rate (%)		Repercussion Annual
		Annual	Year-to-date average	
General Index	106.4	2.2	3.3	
Consumer goods	109.5	1.0	4.5	0.272
- Durable consumer goods	107.6	-3.4	4.1	-0.073
- Non-durable consumer goods	109.6	1.4	4.5	0.345
Capital goods	113.3	10.6	5.7	2.319
Intermediate goods	106.9	-3.4	-1.3	-1.079
Energy	95.2	3.5	6.7	0.681

4. Industrial Production Indices: General and by branches of activity (CNAE 2009). Original series

	Index	Rate (%)		Repercussion Annual
		Annual	Year-to-date average	
General Index	106.4	2.2	3.3	
B. Mining and quarrying industries	117.5	22.4	-1.4	0.144
Extraction of anthracite, coal and lignite
National crude petroleum and natural gas
Extraction of metallic ores
Other mining and quarrying	140.2	22.9	-1.3	0.142
C. Manufacturing industry	108.9	1.3	2.6	1.110
Food Industry	104.0	-3.5	1.1	-0.438
Manufacture of beverages.	115.4	2.9	5.6	0.101
Tobacco industry.
Textile industry	94.7	-7.7	3.8	-0.082
Manufacture of garments	120.6	-16.9	11.5	-0.218
Leather and footwear industry	73.4	4.0	14.9	0.026
Manufacture of wood and of products of wood and cork, except furniture; basketmaking and wickerwork	106.8	-15.8	5.5	-0.238
Manufacture of paper and paper-products	97.6	-6.1	-0.5	-0.150
Graphic arts and reproduction of recorded media	82.8	1.9	0.3	0.024
Manufacture of coke and refined petroleum products	92.2	-10.9	6.4	-0.258
Chemical Industry	101.6	-9.4	-2.6	-0.628
Manufacture of pharmaceutical products	141.8	19.8	8.6	0.822
Rubber and plastic material transformation industry	109.7	-1.0	1.6	-0.050
Manufacture of other non-metallic ore products	119.5	-4.3	-0.5	-0.192
Metallurgy; manufacture of iron, steel and ferro-alloy products	90.9	-12.1	-8.3	-0.413
Manufacture of metal products, except machinery and equipment	112.4	3.8	1.8	0.309
Manufacture of computers, electronic and optical products	117.5	1.7	3.6	0.020
Manufacture of electrical material and equipment	123.9	19.8	4.7	0.551
Manufacture of machinery and equipment n.e.c.	130.6	4.2	5.4	0.230
Manufacture of motor vehicles, trailers and semi-trailers	95.3	22.9	5.3	1.395
Manufacture of other transport equipment	109.8	5.1	5.8	0.139
Manufacture of furniture.	116.7	-3.3	4.4	-0.048
Other manufacturing industries	130.0	5.0	6.1	0.065
Repair and installation of machinery and equipment	123.0	5.3	5.6	0.162
D. Supply of electrical energy, gas, steam and air conditioning	95.0	6.7	8.2	0.939
E. Water supply, activities, waste management and decontamination*	100.8	0.0	-0.5	0.000

* It only includes Water collection, treatment and supply

(..) Data not available due to statistical secrecy.

5. Industrial production indices: national and by Autonomous Community. Original series

	Index	Rate (%)	
		Annual	Year-to-date average
National	106.4	2.2	3.3
Andalucía	102.9	5.2	6.4
Aragón	103.8	1.9	7.0
Asturias, Principado de	102.4	-1.1	1.9
Balears, Illes	89.3	1.1	17.3
Canarias	94.2	1.8	4.4
Cantabria	118.6	6.6	-1.1
Castilla y León	91.3	4.8	-2.4
Castilla-La Mancha	111.5	4.2	5.8
Cataluña	105.5	0.4	1.2
Comunitat Valenciana	110.6	3.6	3.4
Extremadura	86.2	-19.5	-0.1
Galicia	102.9	-5.4	-2.0
Madrid, Comunidad de	112.5	4.8	6.2
Murcia, Región de	115.6	5.6	5.7
Navarra, Comunidad Foral de	117.7	3.2	3.5
País Vasco	111.0	3.0	5.6
Rioja, La	91.4	2.5	3.2

More detailed information by Autonomous Community may be obtained at:

Andalucía	www.juntadeandalucia.es/institutodeestadisticaycartografia
Aragón	www.aragon.es/iaest/ipi
Principado de Asturias	www.sadei.es
Illes Balears	www.ibestat.caib.es
Canarias	www.gobiernodecanarias.org/istac
Cantabria	www.icane.es
Castilla y León	www.jcyl.es/estadistica
Castilla - La Mancha	www.jccm.es/estadistica
Cataluña	www.idescat.cat
Comunitat Valenciana	www.ive.es
Extremadura	http://estadistica.juntaex.es
Galicia	www.ige.xunta.es
Comunidad de Madrid	www.madrid.org/iestadis
Región de Murcia	http://econet.carm.es
La Rioja	www.larioja.org