

Industrial Production Indices (IPI). Base 2015
December 2020 Provisional data

After adjusting for seasonal and calendar effects, the monthly variation of the Industrial Production Index stood at 1.1%

The annual rate of the Industrial Production Index stands at -0.6% in the series adjusted for seasonal and calendar effects and at 2.9% in the original series

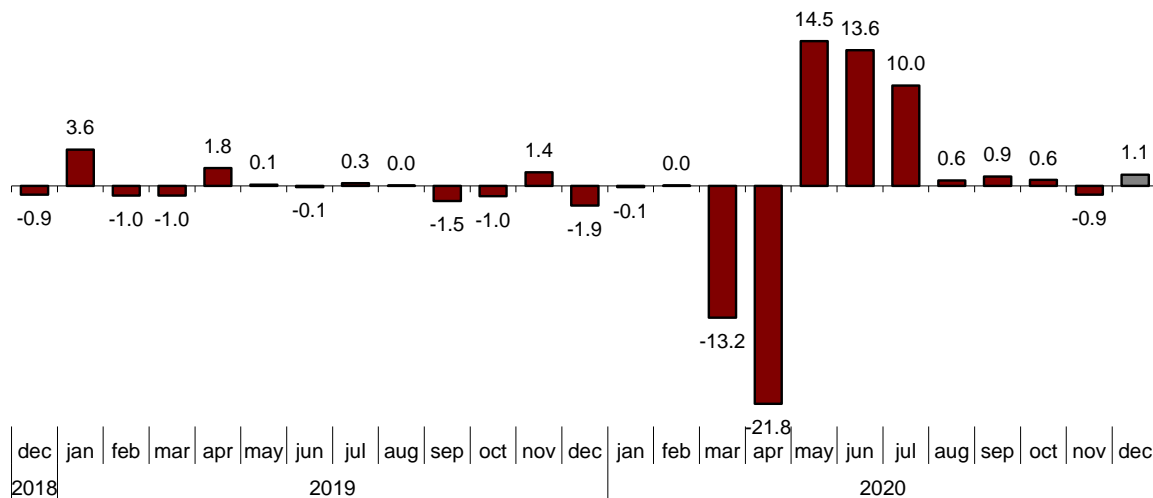
Throughout the year 2020, industrial production decreased by 9.4% in the series adjusted for seasonal and calendar effects and 9.1% in the original series

Monthly evolution of industrial production

After adjusting for seasonal and calendar effects, the monthly variation of the Industrial Production Index (IPI) between December and November stood at 1.1%. This rate is 2.0 points higher than that observed in November.

General Industrial Production Index

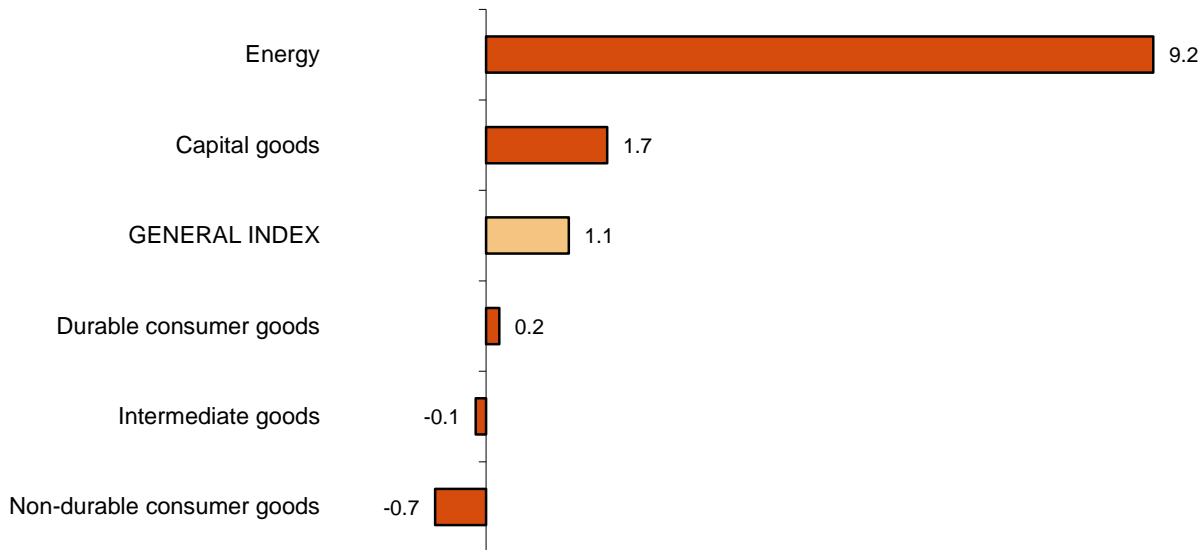
Adjusted for seasonal and calendar effects. Monthly rate (percentage)



By sectors, *Energy* (9.2%), *Capital goods* (1.7%) and *Durable consumer goods* (0.2%) showed positive monthly rates. On the other hand, *Non-durable consumer goods* (-0.7%) and *Intermediate goods* (-0.1%) showed negative monthly rates.

Industrial Production Indices: General and by economic destination

Adjusted for seasonal and calendar effects December 2020 Monthly rate (percentage)



In a more detailed analysis, it is possible to observe the branches of activity with the highest and lowest monthly rates in the month of December.

Branches of activity with the highest monthly rates of the industrial production index adjusted for seasonal and calendar effects

Activity (Division from CNAE 2009)	Monthly rate (%)
Supply of electrical energy, gas, steam and air conditioning	13.4
Tobacco industry	12.9
Manufacture of beverages	4.3

Branches of activity with the lowest monthly rates of the industrial production index adjusted for seasonal and calendar effects

Activity (Division from CNAE 2009)	Monthly rate (%)
Manufacture of pharmaceutical products	-13.6
Manufacture of coke and refined petroleum products	-12.1
Leather and footwear industry	-7.3

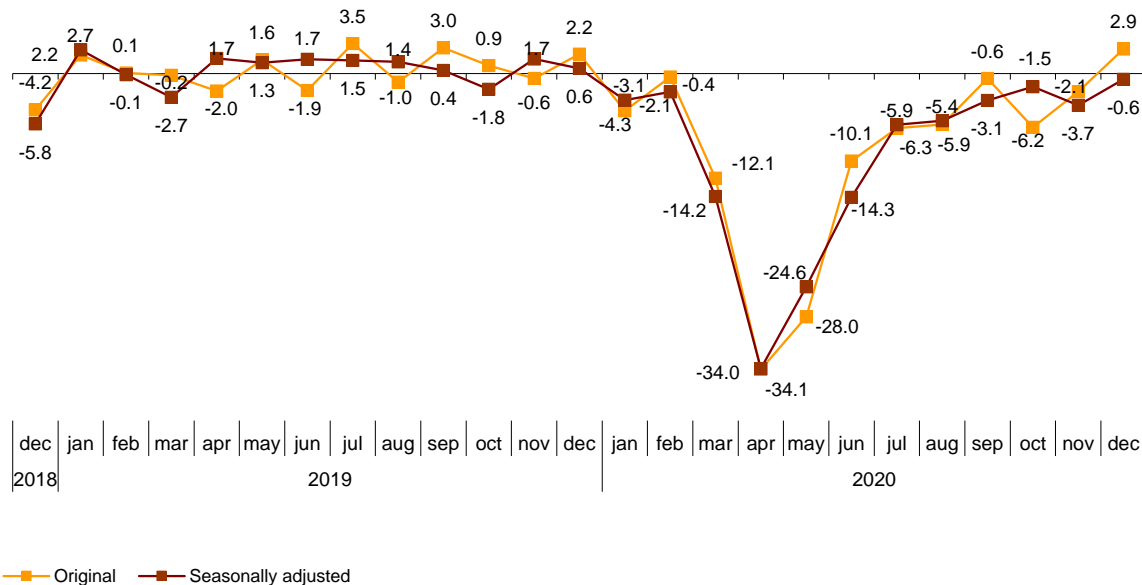
Annual evolution of industrial production

The Industrial Production Index, adjusted for seasonal and calendar effects, recorded a variation rate of -0.6% in December, as compared to the same month of the previous year. This rate is 3.1 points higher than that registered in November.

The original IPI series experienced an annual variation of 2.9%. This rate is 5.0 points higher than that of November.

General Industrial Production Index

Annual rate (percentage)



By sectors, *Energy* (3.4%) and *Intermediate goods* (2.4%) showed positive annual rates. On the other hand *Non-durable consumer goods* (-4.5%), *Capital goods* (-3.3%) and *Durable consumer goods* (-2.0%) showed negative annual rates.

Throughout the year 2020 retail sales decreased by 9.4% in the series adjusted for seasonal and calendar effects and 9.1% in the original series.

Annual rates of industrial production indices: General and by economic destination of the goods

	Original index	Seasonally adjusted index	
	Annual rate (%)	Annual rate (%)	Rate of the 2020 average (%)
General Index	2,9	-0,6	-9,4
Consumer goods	0,1	-3,6	-7,4
- Durable consumer goods	2,4	-2,0	-13,6
- Non-durable consumer goods	-0,1	-4,5	-6,6
Capital goods	0,8	-3,3	-15,5
Intermediate goods	5,9	2,4	-7,9
Energy	4,2	3,4	-6,7

Annual evolution of the Industrial Production Index corrected for seasonal and calendar effects by economic destination of the goods

The health crisis caused by COVID-19 caused the various industrial sectors to suffer greatly in 2020, with pronounced decreases in production, especially in the months of March, April, May and June.

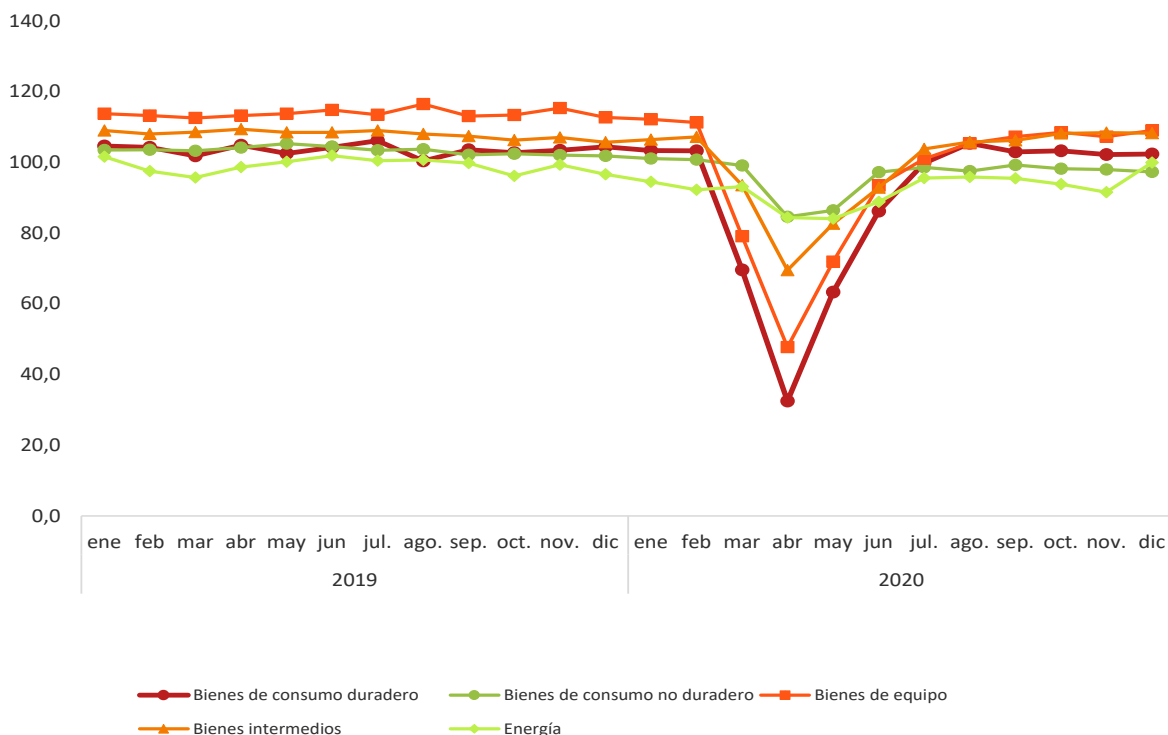
The evolution is different in different sectors. In the initial period of confinement, the greatest decreases occurred in the sectors of *Durable consumer goods* and *Capital goods*. On the other hand, the contraction was less intense for *Non-durable consumer goods* and *Energy*.

De-escalation and arrival of the “new normality” led to a recovery that was generalised, yet uneven across the different sectors. It was more intense in *Durable consumer goods* and *Capital goods* and less so in *Non-durable consumer goods* and *Energy*.

In the final quarter of 2020, only the *Intermediate Goods* sector has met and exceeded 2019 levels.

For the 2020 average, all sectors suffered decreases compared to the 2019 average of more than 6%. *Capital goods* (-15.5%) and *Durable consumer goods* (-13.6%) experienced the greatest drops. Meanwhile, *Energy* (-6.7%) and *Non-durable consumer goods* (-6.6%) underwent the most moderate decreases.

Industrial production indices by economic destination of the goods. Series corrected for seasonal and calendar effects Years 2019 and 2020.



Results by Autonomous Communities. Annual variation rates of industrial production. Original series

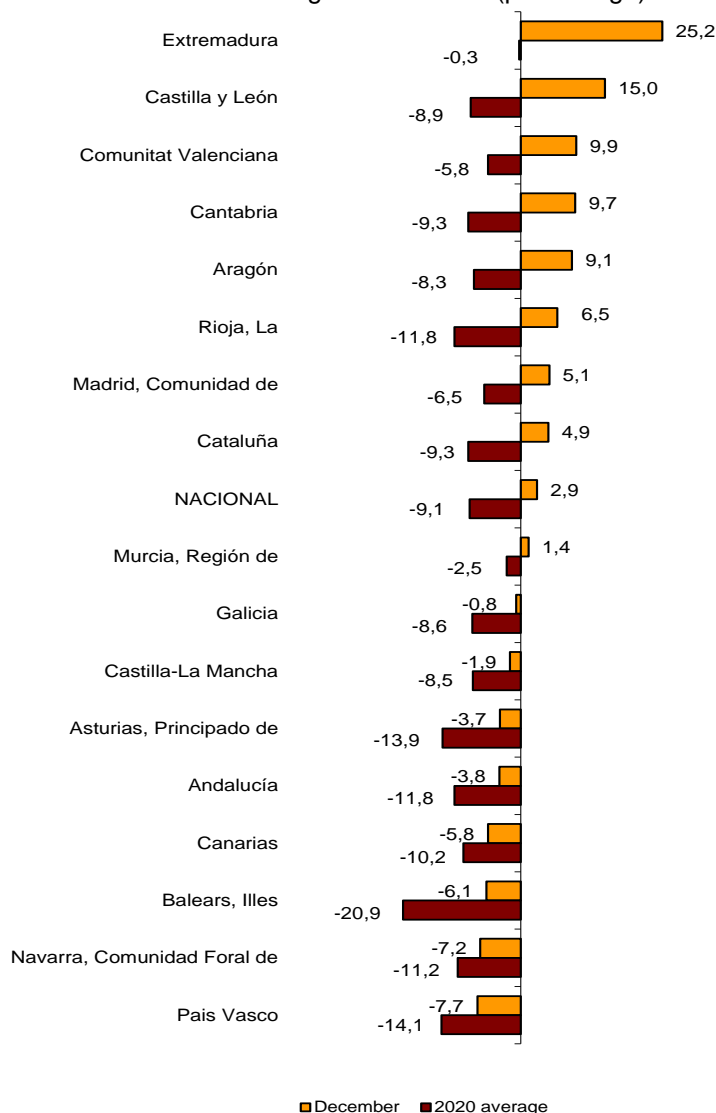
The annual rate of industrial production increased as compared to December 2019 in nine Autonomous Communities and decreased in the other nine.

The largest increases were recorded in Extremadura (25.2%), Castilla y León (15.0%) and Comunitat Valenciana (9.9%). The largest decreases were recorded in País Vasco (-7.7%), Comunidad Foral de Navarra (-7.2%) and Illes Balears (-6.1%).

Throughout the year 2020 retail sales decreased by 9.4% in the series adjusted for seasonal and calendar effects and 9.1% in the original series.

General indices: national and by Autonomous Communities

December 2020 and 2020 average. Annual rate (percentage)



Data Review and Update

Coinciding with today's publication, the INE has updated the data of the IPI series corresponding to the last two months. In the case of the series adjusted for calendar effects and for seasonal and calendar effects, the series is revised from the beginning, following the INE standard. The results are available at INEBase.

Methodological note

The Industrial Production Index (IPI) is a short-term indicator that measures the monthly evolution of the productive activity of the industrial branches, excluding construction, contained in the National Classification of Economic Activities 2009 (CNAE-2009). It therefore investigates the activities included in sections B, C, D and division 36: Water collection, treatment and supply, from section E of the CNAE-2009.

The IPI measures the joint evolution of quantity and quality, eliminating the influence of prices.

Type of survey: monthly continuous survey.

Base year: 2015.

Population scope: industrial establishments whose main activity is included in sections B, C, D and division 36 of CNAE-2009.

Geographical scope: the entire national territory.

Sample size: 11,500 industrial establishments and more than 1,100 products.

Collection method: completion of the questionnaire by the respondent using one of the following methods: internet (IRIA system), e-mail, fax, telephone or by postal mail.

For more information the methodology can be accessed at:

https://www.ine.es/en/daco/daco43/metoipi15_en.pdf

And the standardised methodological report at:

<https://www.ine.es/dynt3/metadatos/en/RespuestaDatos.html?oe=30050>

INE statistics are produced in accordance with the Code of Good Practice for European Statistics, which is the basis for the institution's quality policy and strategy. For more information see the section on [Quality at INE and the Code of Best Practices](#) on the INE website.

For further information see **INEbase:** www.ine.es/en/ Twitter: [@es_ine](https://twitter.com/es_ine)

All press releases at: www.ine.es/en/prensa/prensa_en.htm

Press Office: Telephone numbers: (+34) 91 583 93 63 /94 08 – gprensa@ine.es

Information Area: Telephone number: (+34) 91 583 91 00 – www.ine.es/infoine/?L=1

Industrial Production Indices. Base 2015

December 2020

Provisional Data

1. Industrial Production Indices: General and by economic destination adjusted for seasonal and calendar effects

	Index	Rate (%)		
		Monthly	Annual	Year-to-date average
General Index	103.3	1.1	-0.6	-9.4
Consumer goods	98.5	-0.6	-3.6	-7.4
- Durable consumer goods	102.4	0.2	-2.0	-13.6
- Non-durable consumer goods	97.3	-0.7	-4.5	-6.6
Capital goods	109.0	1.7	-3.3	-15.5
Intermediate goods	108.2	-0.1	2.4	-7.9
Energy	99.9	9.2	3.4	-6.7

2. Industrial Production Indices: General and by economic destination adjusted for seasonal and calendar effects

	Index	Rate (%)	
		Annual	Year-to-date average
General Index	95.7	-0.2	-9.6
Consumer goods	90.2	-3.8	-7.4
- Durable consumer goods	92.2	-1.8	-14.1
- Non-durable consumer goods	89.8	-4.2	-6.9
Capital goods	99.3	-2.8	-16.0
Intermediate goods	92.5	2.7	-8.3
Energy	103.3	3.4	-6.6

3. Industrial Production Indices: General and by economic destination. Original series

	Index	Rate (%)		Repercussion Annual
		Annual	Year-to-date average	
General Index	97.8	2.9	-9.1	
Consumer goods	92.8	0.1	-7.1	0.028
- Durable consumer goods	95.0	2.4	-13.5	0.047
- Non-durable consumer goods	92.6	-0.1	-6.5	-0.019
Capital goods	101.8	0.8	-15.4	0.196
Intermediate goods	94.7	5.9	-7.8	1.663
Energy	103.8	4.2	-6.2	0.966

4. Industrial Production Indices: General and by branches of activity (CNAE 2009). Original series

	Index	Rate (%)		Repercussion
		Annual	Year-to-date average	Annual
General Index	97.8	2.9	-9.1	
B. Mining and quarrying industries	81.9	-6.2	-7.5	-0.040
Extraction of anthracite, coal and lignite
National crude petroleum and natural gas
Extraction of metallic ores
Other mining and quarrying	95.9	6.7	-7.7	0.036
C. Manufacturing industry	96.0	1.7	-10.0	1.386
Food Industry	103.4	2.7	-4.7	0.341
Manufacture of beverages.	94.2	7.2	-8.6	0.218
Tobacco industry.
Textile industry	94.3	22.3	-7.9	0.197
Manufacture of garments	71.5	-19.3	-26.5	-0.167
Leather and footwear industry	50.8	-33.8	-28.2	-0.257
Manufacture of wood and of products of wood and cork, except furniture; basketmaking and wickerwork	96.7	10.5	-11.9	0.120
Manufacture of paper and paper-products	92.4	4.8	-3.1	0.109
Graphic arts and reproduction of recorded media	73.0	-7.4	-18.0	-0.100
Manufacture of coke and refined petroleum products	90.5	-19.1	-15.7	-0.536
Chemical Industry	98.0	7.9	-1.8	0.465
Manufacture of pharmaceutical products	91.0	-5.0	2.1	-0.185
Rubber and plastic material transformation industry	96.3	14.0	-6.5	0.564
Manufacture of other non-metallic ore products	95.1	3.2	-8.9	0.114
Metallurgy; manufacture of iron, steel and ferro-alloy products	79.0	0.8	-13.6	0.024
Manufacture of metal products, except machinery and equipment	95.0	2.7	-13.2	0.210
Manufacture of computers, electronic and optical products	108.8	-6.0	-5.1	-0.077
Manufacture of electrical material and equipment	99.4	0.2	-3.9	0.006
Manufacture of machinery and equipment n.e.c.	129.7	1.4	-12.6	0.088
Manufacture of motor vehicles, trailers and semi-trailers	87.0	9.5	-18.4	0.649
Manufacture of other transport equipment	83.0	-13.5	-18.4	-0.372
Manufacture of furniture.	97.1	-3.8	-17.3	-0.052
Other manufacturing industries	103.9	1.5	-19.8	0.018
Repair and installation of machinery and equipment	112.1	-0.8	-12.5	-0.025
D. Supply of electrical energy, gas, steam and air conditioning	108.4	8.6	-5.2	1.486
E. Water supply, activities, waste management and decontamination*	90.5	0.8	-3.5	0.021

* It only includes Water collection, treatment and supply

(..) Data not available due to statistical secrecy.

5. Industrial production indices: national and by Autonomous Community. Original series

	Index	Rate (%)	
		Annual	Year-to-date average
National	97.8	2.9	-9.1
Andalucía	91.1	-3.8	-11.8
Aragón	101.0	9.1	-8.3
Asturias, Principado de	92.1	-3.7	-13.9
Balears, Illes	74.4	-6.1	-20.9
Canarias	89.0	-5.8	-10.2
Cantabria	102.3	9.7	-9.3
Castilla y León	98.8	15.0	-8.9
Castilla-La Mancha	94.7	-1.9	-8.5
Cataluña	96.3	4.9	-9.3
Comunitat Valenciana	104.0	9.9	-5.8
Extremadura	118.8	25.2	-0.3
Galicia	102.6	-0.8	-8.6
Madrid, Comunidad de	106.9	5.1	-6.5
Murcia, Región de	105.1	1.4	-2.5
Navarra, Comunidad Foral de	93.6	-7.2	-11.2
País Vasco	88.0	-7.7	-14.1
Rioja, La	83.8	6.5	-11.8

More detailed information by Autonomous Community may be obtained at:

Andalucía	www.juntadeandalucia.es/institutodeestadisticaycartografia
Aragón	www.aragon.es/iaest/ipi
Principado de Asturias	www.sadei.es
Illes Balears	www.ibestat.caib.es
Canarias	www.gobiernodecanarias.org/istac
Cantabria	www.icane.es
Castilla y León	www.jcyl.es/estadistica
Castilla - La Mancha	www.jccm.es/estadistica
Cataluña	www.idescat.cat
Comunitat Valenciana	www.ive.es
Extremadura	http://estadistica.juntaex.es
Galicia	www.ige.xunta.es
Comunidad de Madrid	www.madrid.org/iestadis
Región de Murcia	http://econet.carm.es
La Rioja	www.larioja.org