

11 September 2013

Mercantile Companies Statistics (MC)

July 2013. *Provisional data*

8,061 mercantile companies are created in July, 16.2% more as compared with the previous year and 1,850 are dissolved, 12.7% more

The Autonomous Communities with the greatest business dynamism¹ are Canarias (35.4%), Castilla-La Mancha (30.0%) and Cantabria (28.6%)

8,061 mercantile companies were created in July, 16.2% more than in the same month of 2012. The capital subscribed for their constitution exceeded 348 million euros, representing a 55.4%. The average capital subscribed (43,269 euros) decreased 61.6% in its annual rate.

On the other hand, 2,634 mercantile companies increased their capital in July, 3.1% less than in the same month of 2012. The capital subscribed in the increases registered a 0.7% increase and exceeded 5,274 million euros. The average capital subscribed in these transactions (2,002,293 euros) increased 3.9% in its annual rate.

The number of mercantile companies dissolved in July was 1,850, 12.7% more as compared with the same month of the previous year. Of these, 63.9% did so voluntarily, 7.2% due to mergers and the remaining 28.9% for other reasons.

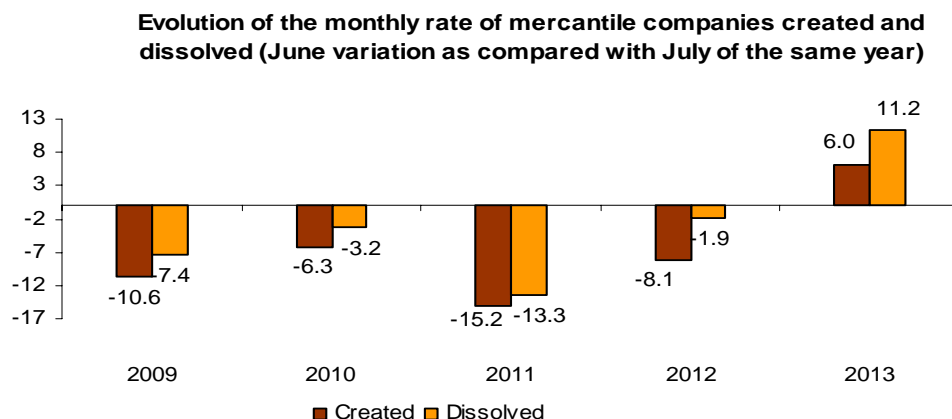
Mercantile companies created, increasing their capital and dissolved

	Total	% Variation		
		Monthly	Annual	Annual accumulated
Mercantile companies created				
Number	8,061	6.0	16.2	9.2
Capital subscribed (thousands of euros)	348,789	22.2	-55.4	-26.5
Average capital subscribed (euros)	43,269	15.3	-61.6	-32.7
Mercantile companies increasing their capital				
Number	2,634	4.2	-3.1	-6.0
Capital subscribed (thousands of euros)	5,274,041	-31.0	0.7	113.8
Average capital subscribed (euros)	2,002,293	-33.8	3.9	127.5
Mercantile companies dissolved				
Number	1,850	11.2	12.7	11.6
- Voluntary	1,182	7.9	12.6	11.2
- Merger	134	35.4	-13.0	-10.5
- Other	534	13.9	22.2	22.1

¹ Business dynamism: Evolution of the number of mercantile companies, understood as the annual variation rate of the creation of mercantile companies.

Monthly rate evolution

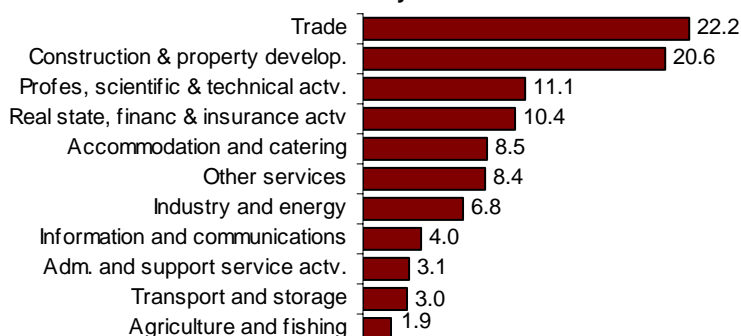
In order to contribute to the analysis and interpretation of the data, the following chart shows the variation of the number of mercantile companies created and dissolved between June and July in the last five years. This year, the monthly variation of the number of companies created was 6.0% and that of the companies dissolved was 11.2%.



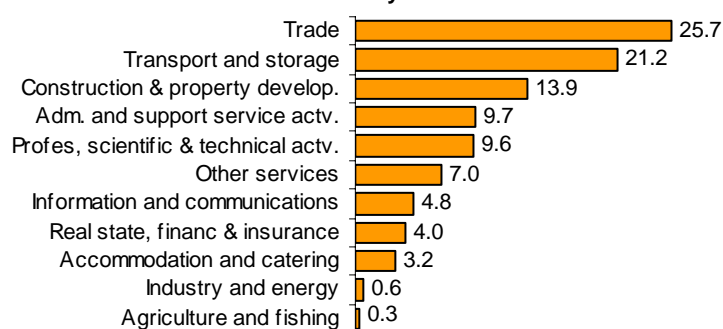
Results by main economic activity

22.2% of the mercantile companies created in July corresponded to *Trade* and 20.6% to *Construction*. Regarding the dissolved companies, *Construction* concentrated 25.7% and *Transport and storage*, 21.2%.

% mercantile companies created by main economic activity

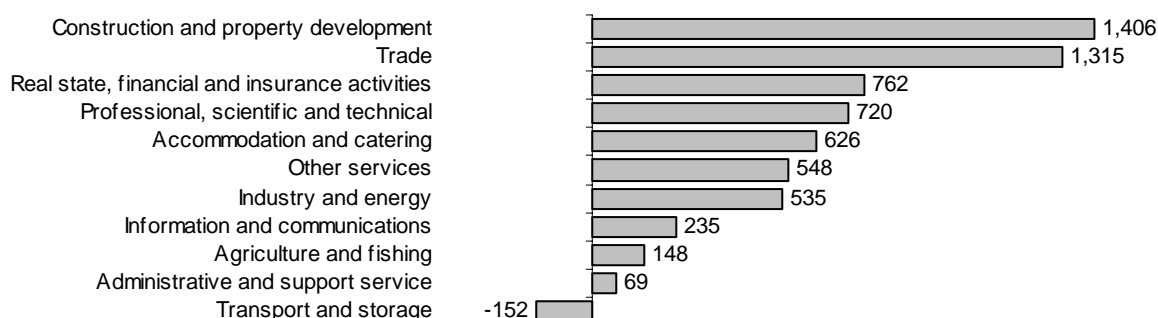


% mercantile companies dissolved by main economic activity

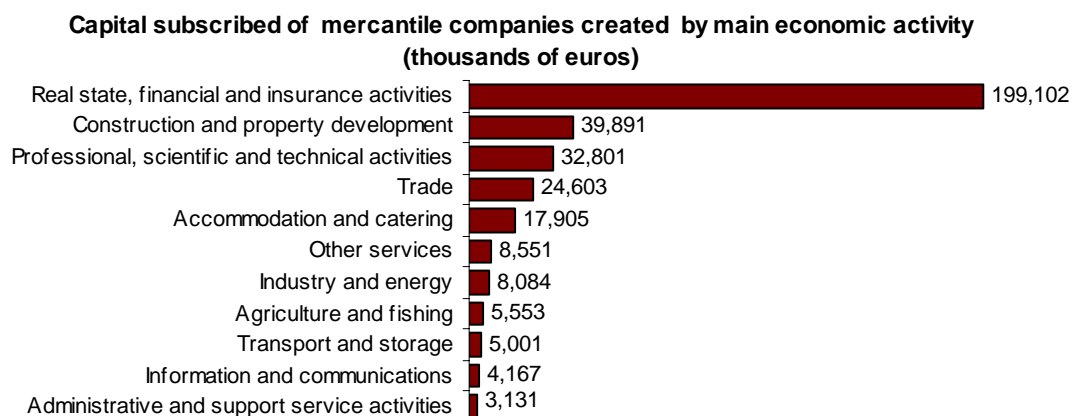


The economic activity with greatest net balance of all the mercantile companies created was *Construction*, with 1,405 companies. *Transport and storage* was the only one to register a negative net balance, with -152 companies created.

Net balance of mercantile companies created by main economic activity



The economic activity with the greatest capital subscribed of mercantile companies created was *Real estate, financial and insurance activities*, with 199.10 million euros. *Administrative and support service activities* registered the lowest capital, with 3.13 million euros.



Results by Autonomous Cities and Communities

In July 2013, the Autonomous Communities with the greatest number of mercantile companies created were Cataluña (1,628) and Comunidad de Madrid (1,619). Conversely, the Autonomous Communities where less mercantile companies were created were La Rioja (23) and Comunidad Foral de Navarra (53).

Regarding the dissolved mercantile companies, the Autonomous Communities that registered the highest number of dissolutions were Comunidad de Madrid (438) and Cataluña (282). In turn, those registering the lowest number of dissolutions were Comunidad Foral de Navarra (13) and La Rioja (19).

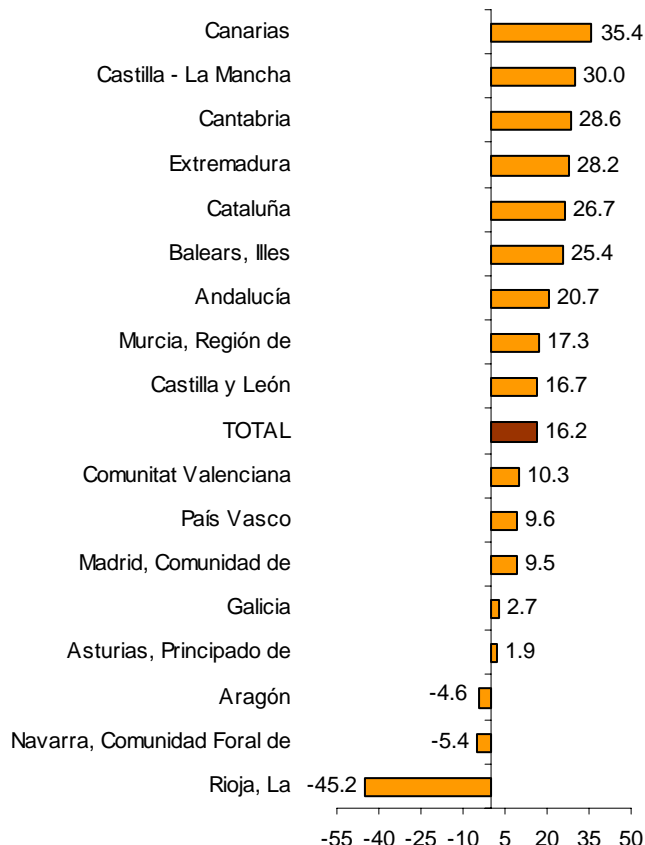
Mercantile companies created and dissolved by autonomous cities and communities

	Created		Dissolved	
	Number	%Variation annual	Number	%Variation annual
TOTAL	8,061	16.2	1,850	12.7
Andalucía	1,371	20.7	242	23.5
Aragón	167	-4.6	70	55.6
Asturias, Principado de	105	1.9	28	-9.7
Balears, Illes	217	25.4	67	17.5
Canarias	344	35.4	65	-4.4
Cantabria	54	28.6	19	11.8
Castilla y León	272	16.7	92	16.5
Castilla - La Mancha	269	30.0	54	1.9
Cataluña	1,628	26.7	282	7.6
Comunitat Valenciana	954	10.3	180	13.2
Extremadura	91	28.2	25	19.0
Galicia	342	2.7	108	-3.6
Madrid, Comunidad de	1,619	9.5	438	15.9
Murcia, Región de	265	17.3	31	40.9
Navarra, Comunidad Foral de	53	-5.4	13	116.7
País Vasco	274	9.6	117	0.0
Rioja, La	23	-45.2	19	18.8
Ceuta	4	300.0	0	-
Melilla	9	80.0	0	-100.0

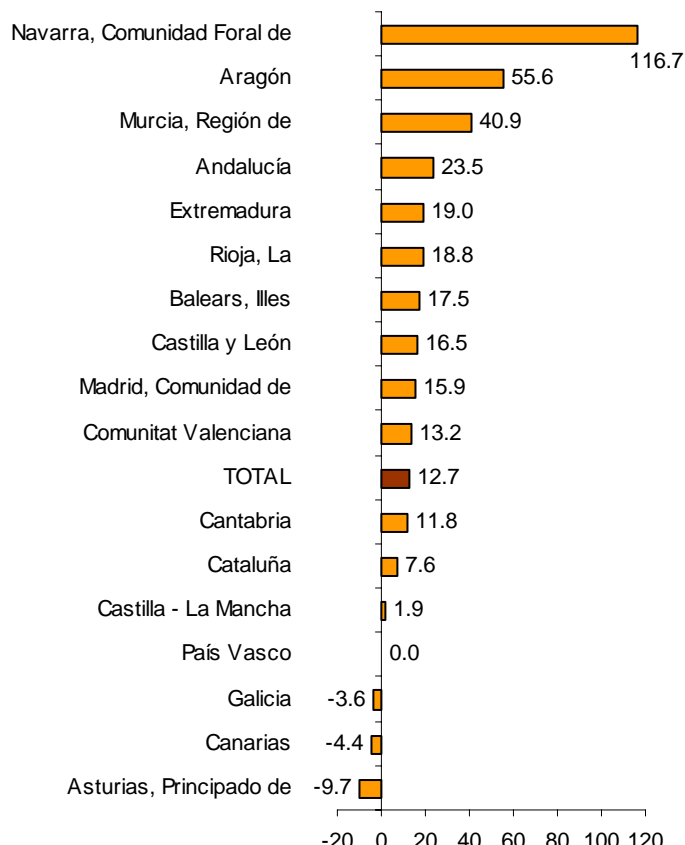
In terms of annual variation of mercantile companies created, Canarias (35.4%), Castilla-La Mancha (30.0%) and Cantabria (28.6%) registered the greatest increases. Conversely, La Rioja (–45.2%) registered the lowest annual rates.

Regarding the mercantile companies dissolved in July, Comunidad Foral de Navarra registered the greatest annual rate (116.7%), followed by Aragón (55.6%) and Región de Murcia (40.9%). Conversely, Principado de Asturias (–9.7%) and Canarias (–4.4%) showed the lowest annual rates.

Annual variation in mercantile companies created by Autonomous Community



Annual variation in mercantile companies dissolved by Autonomous Community



Provincial information

The provincial results that were previously offered in this press release may henceforth be viewed at the following address of the INE website:

http://www.ine.es/en/daco/daco42/daco424/smpro0713_en.pdf

Mercantile Companies Statistics

July 2013. Provisional data

MC 1. Mercantile companies created

Capital in thousands of euros

	General total*			Public limited company			Private limited company		
	Number	Capital		Number	Capital		Number	Capital	
		Subscribed	Disbursed		Subscribed	Disbursed		Subscribed	Disbursed
TOTAL	8,061	348,789	346,542	70	99,716	97,470	7,990	248,952	248,952
Andalucía	1,371	49,389	49,344	5	9,767	9,722	1,366	39,622	39,622
Aragón	167	3,297	3,097	1	325	125	166	2,972	2,972
Asturias, Principado de	105	11,999	11,999	0	0	0	105	11,999	11,999
Balears, Illes	217	4,153	4,153	0	0	0	217	4,153	4,153
Canarias	344	17,846	17,846	4	480	480	340	17,366	17,366
Cantabria	54	809	809	0	0	0	54	809	809
Castilla y León	272	4,406	4,331	2	275	200	270	4,131	4,131
Castilla - La Mancha	269	7,606	6,515	3	1,921	830	266	5,685	5,685
Cataluña	1,628	56,495	56,357	11	6,835	6,697	1,617	49,660	49,660
Comunitat Valenciana	954	15,068	14,888	7	434	254	947	14,634	14,634
Extremadura	91	1,862	1,862	0	0	0	90	1,741	1,741
Galicia	342	23,006	23,006	2	120	120	340	22,886	22,886
Madrid, Comunidad de	1,619	130,593	130,075	34	79,499	78,982	1,585	51,094	51,094
Murcia, Región de	265	10,871	10,871	0	0	0	265	10,871	10,871
Navarra, Comunidad Foral de	53	1,758	1,758	0	0	0	53	1,758	1,758
País Vasco	274	8,361	8,361	1	60	60	273	8,301	8,301
Rioja, La	23	1,173	1,173	0	0	0	23	1,173	1,173
Ceuta	4	13	13	0	0	0	4	13	13
Melilla	9	84	84	0	0	0	9	84	84

* The general total includes collective societies and partnership companies

July 2013. Provisional data

MC 2. Mercantile companies that increase capital and are dissolved

Capital in thousands of euros

	Increase capital						Dissolved			
	General total*		Public limited companies		Private limited companies		Total	Voluntary	Merged	Other
	Number	Capital	Number	Capital	Number	Capital	Number	Number	Number	Number
TOTAL	2,634	5,274,041	233	3,565,231	2,398	1,708,800	1,850	1,182	134	534
Andalucía	352	157,105	15	23,518	337	133,587	242	187	7	48
Aragón	58	42,949	10	15,391	48	27,559	70	49	4	17
Asturias, Principado de	36	16,073	1	60	35	16,013	28	17	5	6
Balears, Illes	76	38,394	7	13,449	69	24,945	67	52	4	11
Canarias	76	42,530	11	24,837	65	17,692	65	57	4	4
Cantabria	18	3,513	1	400	17	3,113	19	9	3	7
Castilla y León	95	17,506	8	4,530	87	12,976	92	62	4	26
Castilla - La Mancha	72	12,615	4	693	68	11,923	54	27	1	26
Cataluña	591	1,277,578	43	946,226	548	331,350	282	133	23	126
Comunitat Valenciana	257	387,348	7	10,350	250	376,998	180	80	17	83
Extremadura	40	5,440	2	973	38	4,467	25	18	0	7
Galicia	109	913,756	8	888,283	101	25,473	108	72	11	25
Madrid, Comunidad de	614	2,039,478	94	1,396,132	518	643,340	438	328	43	67
Murcia, Región de	91	36,831	4	5,014	86	31,814	31	10	1	20
Navarra, Comunidad Foral de	24	6,254	1	60	23	6,194	13	0	0	13
País Vasco	110	274,278	16	233,574	94	40,704	117	73	6	38
Rioja, La	12	528	0	0	12	528	19	8	1	10
Ceuta	0	0	0	0	0	0	0	0	0	0
Melilla	3	1,860	1	1,740	2	120	0	0	0	0

* The general total includes collective societies and partnership companies

July 2013. Provisional data

MC 3. Mercantile companies that disburse installment payments on subscribed shares and companies that reduce capital

Capital in thousands of euros

	Disburs. of install. paym. on sub. shares		Reduce capital	
	Number	Disbursed capital	Number	Subscribed capital
TOTAL	40	168,507	547	1,796,307
Andalucía	4	4,296	75	56,807
Aragón	1	60	8	2,056
Asturias, Principado de	0	0	7	1,875
Balears, Illes	1	500	15	4,722
Canarias	3	2,442	21	4,936
Cantabria	0	0	4	938
Castilla y León	1	60	22	23,927
Castilla - La Mancha	1	36	9	1,113
Cataluña	8	106,242	124	91,298
Comunitat Valenciana	2	872	54	27,648
Extremadura	1	45	9	21,465
Galicia	2	11,867	20	45,140
Madrid, Comunidad de	13	38,772	131	1,330,534
Murcia, Región de	0	0	15	35,856
Navarra, Comunidad Foral de	0	0	4	3,071
País Vasco	2	3,045	27	142,087
Rioja, La	0	0	2	2,836
Ceuta	1	270	0	0
Melilla	0	0	0	0

MC 4. Mercantile companies created by type of company*

Capital in thousands of euros

		Total		Mercantile companies		Public limited labour companies		Special companies and other agencies	
		Number	Capital	Number	Capital	Number	Capital	Number	Capital
2012	July	6,979	781,648	6,935	781,409	2	156	42	83
	August	5,506	453,283	5,470	453,215	0	0	36	68
	September	6,015	290,180	5,984	274,424	1	84	30	15,672
	October	7,571	405,239	7,547	378,238	2	405	22	26,596
	November	7,644	551,677	7,597	535,965	4	310	43	15,402
	December	6,327	652,725	6,298	622,499	0	0	29	30,226
2013	January	8,886	1,092,624	8,853	1,089,661	2	1,056	31	1,906
	February	8,677	577,508	8,644	573,144	1	78	32	4,285
	March	8,367	467,772	8,335	466,480	2	253	30	1,039
	April	8,992	725,481	8,938	724,567	4	602	50	312
	May	8,891	454,986	8,853	454,212	2	390	36	383
	June	7,641	285,646	7,606	285,490	0	0	35	155
	July	8,122	349,499	8,061	348,789	3	320	58	391

* 2012 definitive figures