

8 February 2013

Mercantile Companies Statistics¹

December 2012. *Provisional data*

6,269 mercantile companies are created in December, 5.1% less as compared with the previous year and 2,452 are dissolved, 10.6% more

The Autonomous Communities with the greatest business dynamism² are Aragón (25.2%), La Rioja (15.2%) and Región de Murcia (6.4%)

6,269 mercantile companies were created in November, 5.1% less than in the same month of 2011. The capital subscribed for their constitution exceeded 621 million euros, representing a decrease of 71.8%. The average capital subscribed (99,133 euros) fell 70.3 % in its annual rate.

On the other hand, 2,782 mercantile companies increased their capital in December, 12.2% less than in the same month of 2011. The capital subscribed in the increases registered an interannual increase of 13.2%, and exceeded 8,832 million euros. The average capital subscribed in these transactions (3,174,797 euros) increased 28.9% in its annual rate.

The number of companies dissolved in December was 2,452, indicating an interannual increase of 10.6% as compared with the same month of the previous year. Of these, 66.9% did so voluntarily, 9.6% due to mergers and the remaining 23.5% for other reasons.

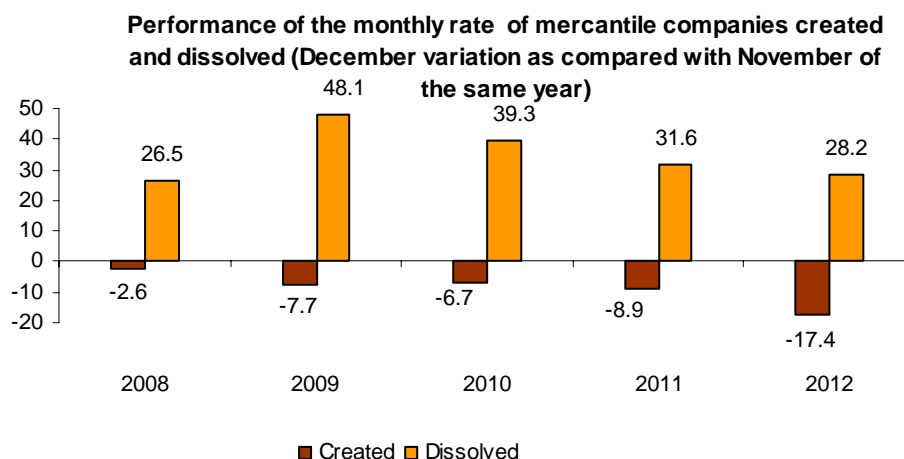
Mercantile companies created, increasing their capital and dissolved

	Total	% Variation		
		Monthly	Annual	Annual accumulated
Mercantile companies created				
Number	6,269	-17.4	-5.1	2.7
Capital subscribed (thousands of euros)	621,464	16.3	-71.8	-64.5
Average capital subscribed (euros)	99,133	40.8	-70.3	-65.4
Mercantile companies increasing their capital				
Number	2,782	-1.4	-12.2	0.1
Capital subscribed (thousands of euros)	8,832,285	142.3	13.2	-22.9
Average capital subscribed (euros)	3,174,797	145.7	28.9	-23.0
Mercantile companies dissolved				
Number	2,452	28.2	10.6	14.1
-Voluntary	1,745	36.4	4.4	10.7
-Merger	289	57.1	-9.1	-13.6
-Other	418	-6.9	82.5	50.4

¹ On February 18 a press release will be published with a detailed analysis of the annual results of the Mercantile Companies Statistics

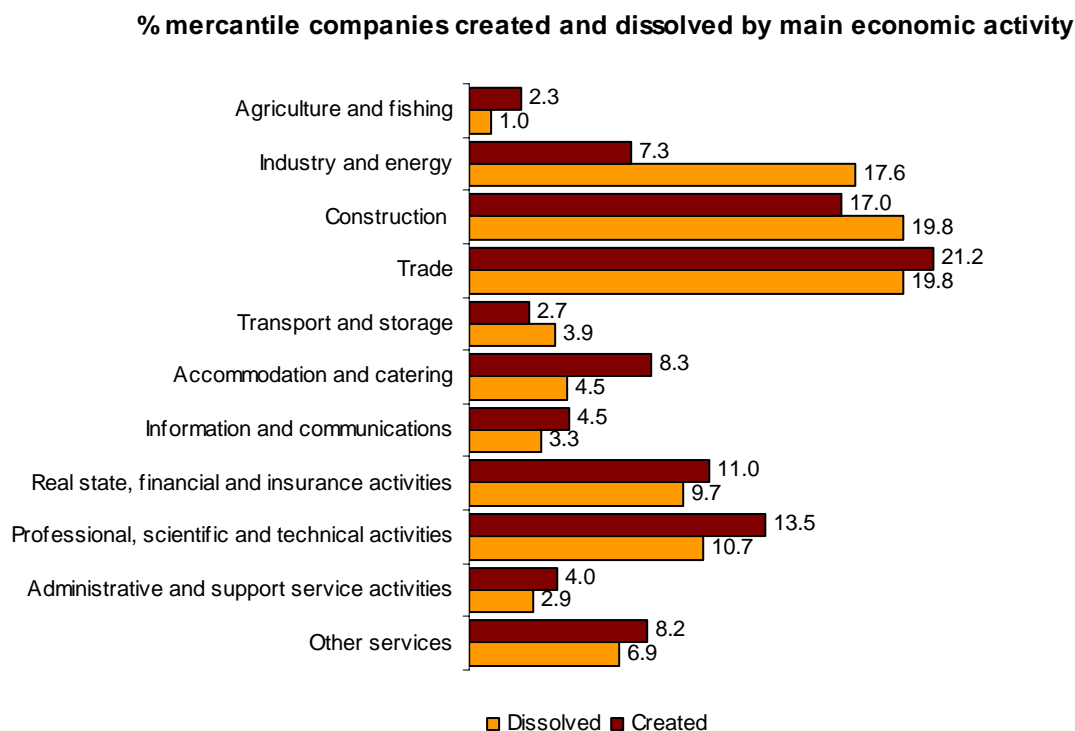
² Business dynamism: Evolution of the number of mercantile companies, as the interannual variation rate of the incorporation of mercantile companies

In order to contribute to the analysis and interpretation of the data, the following chart shows the variation of the number of mercantile companies created and dissolved between November and December in the last five years. This year the monthly variation of the number of companies created was -17.4% and that of the companies dissolved was 28.2%.



Results by main economic activity

21.2% of the mercantile companies created in the month of December corresponded to *Trade* and 17.0% to *Construction*. Regarding the dissolved companies by economic activity, both *Construction* and *Trade* concentrated 19.8% of the total each.



Results by Autonomous City and Community

In December 2012, the Autonomous Communities with the greatest number of mercantile companies created were Comunidad de Madrid (1,358) and Andalucía (1,059).

Conversely, the Autonomous Communities where less mercantile companies were created were La Rioja and Cantabria (with 38 and 50, respectively).

Regarding the dissolved mercantile companies, the Autonomous Communities that presented the highest number of dissolutions were Comunidad de Madrid and Andalucía, (469 and 346, respectively).

In turn, the Autonomous Communities with the lowest number of dissolutions were Comunidad Foral de Navarra (9) and Región de Murcia (15).

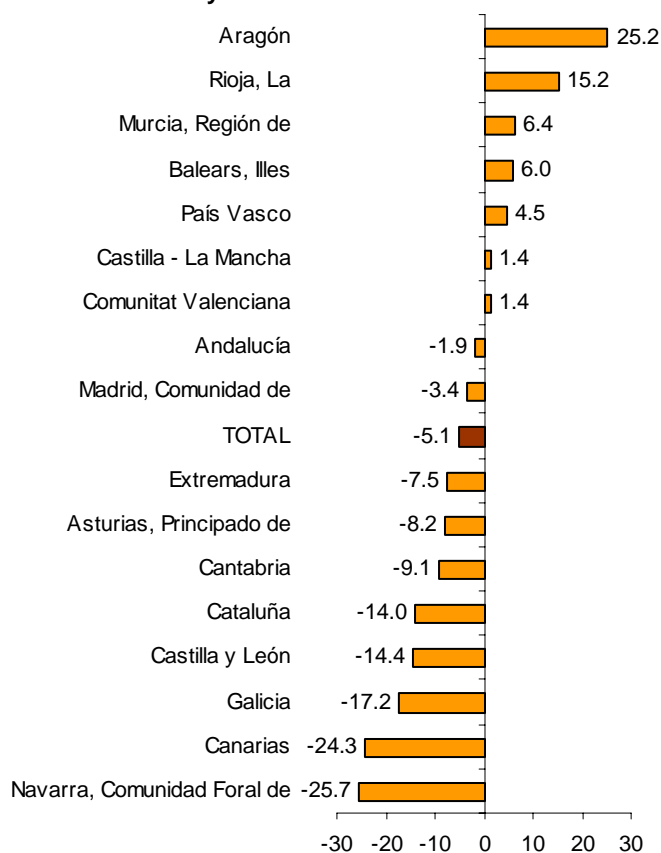
Mercantile companies created and dissolved by autonomous cities and communities

	Created		Dissolved	
	Number	%Variation annual	Number	%Variation annual
TOTAL	6,269	-5.1	2,452	10.6
Andalucía	1,059	-1.9	346	-0.9
Aragón	164	25.2	117	-7.9
Asturias, Principado de	90	-8.2	58	70.6
Balears, Illes	194	6.0	114	8.6
Canarias	190	-24.3	94	-17.5
Cantabria	50	-9.1	27	8.0
Castilla y León	190	-14.4	129	10.3
Castilla - La Mancha	215	1.4	71	108.8
Cataluña	1,054	-14.0	284	6.8
Comunitat Valenciana	793	1.4	207	30.2
Extremadura	74	-7.5	56	115.4
Galicia	256	-17.2	197	-13.2
Madrid, Comunidad de	1,358	-3.4	469	4.7
Murcia, Región de	249	6.4	15	-61.5
Navarra, Comunidad Foral de	55	-25.7	9	50.0
País Vasco	231	4.5	216	78.5
Rioja, La	38	15.2	39	225.0
Ceuta	3	-50.0	4	-42.9
Melilla	6	200.0	-	-

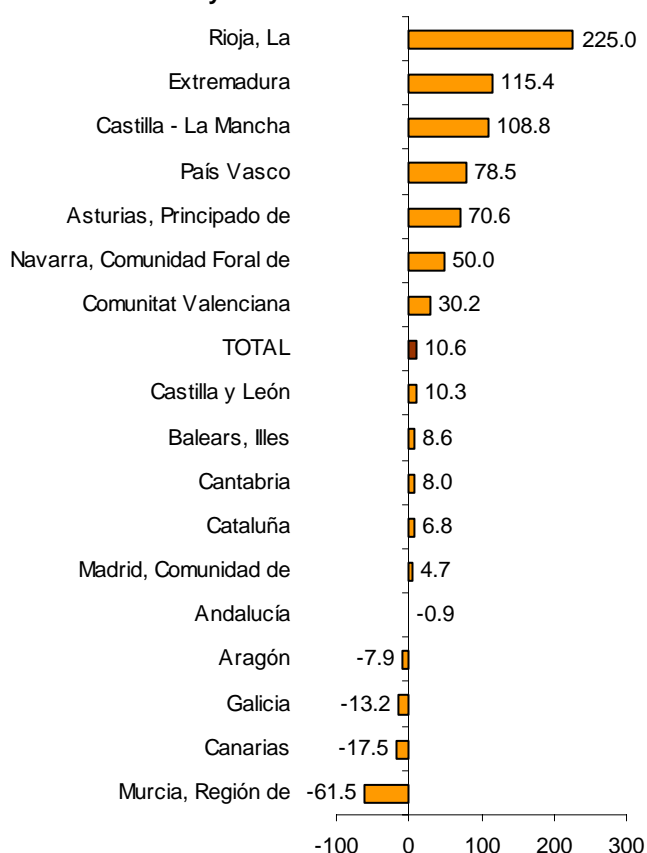
In terms of annual variation of mercantile companies created, Aragón (25.2%), La Rioja (15.2%) and Región de Murcia (6.4%) registered the greatest increases. The Autonomous Communities that presented the greatest decreases were Comunidad Foral de Navarra (-25.7%) and Canarias (-24.3%).

Regarding the mercantile companies dissolved in December, La Rioja registered the greatest interannual rate (225.0%), followed by Extremadura (115.4%) and Castilla-La Mancha (108.8%). Región de Murcia presented the greatest decrease in its annual rate (-61.5%).

Annual variation in mercantile companies created by Autonomous Communities



Annual variation in mercantile companies dissolved by Autonomous Communities



Provincial information

The provincial results that were previously offered in this press release may henceforth be viewed at the following address of the INE website:

http://www.ine.es/en/daco/daco42/daco424/smpro1212_en.pdf

Mercantile Companies Statistics

December 2012. Provisional data

MC 1. Mercantile companies created

Capital in thousands of euros

	General total*			Public limited company			Private limited company		
	Number	Capital		Number	Capital		Number	Capital	
		Subscribed	Disbursed		Subscribed	Disbursed		Subscribed	Disbursed
TOTAL	6,269	621,464	620,751	53	72,896	72,184	6,214	548,538	548,538
Andalucía	1,059	135,696	135,696	4	58,065	58,065	1,055	77,631	77,631
Aragón	164	24,590	24,590	1	60	60	163	24,530	24,530
Asturias, Principado de	90	3,548	3,548	-	-	-	90	3,548	3,548
Balears, Illes	194	2,858	2,858	2	120	120	192	2,738	2,738
Canarias	190	2,138	2,138	0	0	0	190	2,138	2,138
Cantabria	50	264	264	-	-	-	50	264	264
Castilla y León	190	9,768	9,723	1	60	15	189	9,708	9,708
Castilla - La Mancha	215	9,219	9,219	4	5,850	5,850	211	3,369	3,369
Cataluña	1,054	91,883	91,838	12	3,550	3,505	1,042	88,333	88,333
Comunitat Valenciana	793	51,449	51,404	5	460	415	788	50,989	50,989
Extremadura	74	3,115	3,115	0	0	0	74	3,115	3,115
Galicia	256	19,395	19,350	2	464	419	254	18,931	18,931
Madrid, Comunidad de	1,358	168,760	168,228	18	3,986	3,454	1,338	164,744	164,744
Murcia, Región de	249	48,561	48,561	2	120	120	247	48,441	48,441
Navarra, Comunidad Foral de	55	8,474	8,474	-	-	-	55	8,474	8,474
País Vasco	231	40,448	40,448	0	0	0	231	40,448	40,448
Rioja, La	38	1,242	1,242	2	160	160	36	1,082	1,082
Ceuta	3	37	37	-	-	-	3	37	37
Melilla	6	19	19	-	-	-	6	19	19

* The general total includes collective societies and partnership companies

December 2012. Provisional data

MC 2. Mercantile companies that increase capital and are dissolved

Capital in thousands of euros

	Increase capital						Dissolved			
	General total*		Public limited companies		Private limited companies		Total	Voluntary	Merged	Other
	Number	Capital	Number	Capital	Number	Capital	Number	Number	Number	Number
TOTAL	2,782	8,832,285	227	6,698,164	2,555	2,134,121	2,452	1,745	289	418
Andalucía	444	354,878	19	71,609	425	283,271	346	285	18	43
Aragón	84	42,647	9	9,261	75	33,386	117	81	17	19
Asturias, Principado de	49	15,497	4	2,224	45	13,274	58	41	4	13
Balears, Illes	82	45,845	4	5,441	78	40,404	114	93	7	14
Canarias	85	45,605	3	2,219	82	43,385	94	84	8	2
Cantabria	24	4,613	4	2,160	20	2,452	27	23	2	2
Castilla y León	121	56,671	10	12,413	111	44,257	129	106	7	16
Castilla - La Mancha	104	55,013	8	4,052	96	50,960	71	30	24	17
Cataluña	515	1,205,525	38	683,979	477	521,546	284	154	24	106
Comunitat Valenciana	230	4,713,306	14	4,598,221	216	115,086	207	139	20	48
Extremadura	42	20,310	4	553	38	19,757	56	41	7	8
Galicia	141	128,952	4	4,145	137	124,806	197	159	6	32
Madrid, Comunidad de	579	1,714,595	67	1,003,233	512	711,362	469	361	59	49
Murcia, Región de	104	74,999	5	3,924	99	71,075	15	4	1	10
Navarra, Comunidad Foral de	29	10,155	5	4,454	24	5,701	9	1	3	5
País Vasco	121	334,944	25	284,136	96	50,807	216	102	80	34
Rioja, La	24	8,730	4	6,139	20	2,591	39	37	2	-
Ceuta	4	0	-	-	4	0	4	4	-	-
Melilla	-	-	-	-	-	-	-	-	-	-

* The general total includes collective societies and partnership companies

December 2012. Provisional data

MC 3. Mercantile companies that disburse installment payments on subscribed shares and companies that reduce capital

Capital in thousands of euros

	Disburs. of install. paym. on sub. shares		Reduce capital	
	Number	Disbursed capital	Number	Subscribed capital
TOTAL	35	22,246	520	2,861,476
Andalucía	3	8,013	71	25,628
Aragón	1	2,565	22	68,313
Asturias, Principado de	2	218	7	514
Balears, Illes	-	-	15	19,045
Canarias	1	23	20	4,561
Cantabria	2	599	2	418
Castilla y León	-	-	24	16,029
Castilla - La Mancha	-	-	12	3,224
Cataluña	5	491	111	880,831
Comunitat Valenciana	2	100	41	1,069,381
Extremadura	-	-	3	427
Galicia	1	1,500	20	6,274
Madrid, Comunidad de	15	8,446	116	647,625
Murcia, Región de	-	-	14	7,560
Navarra, Comunidad Foral de	1	225	4	6,034
País Vasco	2	65	32	104,259
Rioja, La	-	-	6	1,354
Ceuta	-	-	-	-
Melilla	-	-	-	-

MC 4. Mercantile companies created by type of company

Capital in thousands of euros

		Total		Mercantile companies		Public limited labour companies		Special companies and other agencies	
		Number	Capital	Number	Capital	Number	Capital	Number	Capital
2011	December	6,645	2,208,235	6,602	2,207,489	-	-	43	745
2012	January	7,995	755,780	7,951	755,301	4	300	40	179
	February	8,289	560,651	8,214	551,409	-	-	75	9,242
	March	8,779	1,107,815	8,733	1,106,344	4	346	42	1,125
	April	6,881	285,726	6,843	277,007	6	527	32	8,193
	May	8,064	398,706	8,031	398,286	-	-	33	421
	June	7,593	1,500,000	7,550	1,493,661	2	128	41	6,210
	July	6,952	780,847	6,909	780,608	2	156	41	83
	August	5,502	419,848	5,466	419,780	-	-	36	68
	September	6,001	289,140	5,970	273,385	1	84	30	15,671
	October	7,562	404,492	7,538	377,490	2	405	22	26,596
	November	7,639	550,217	7,592	534,505	4	310	43	15,402
	December	6,297	651,687	6,269	621,464	-	-	28	30,223