

18 July 2023

Services Sector Activity Indicators (SSAI). Base 2015
May 2023. Provisional data

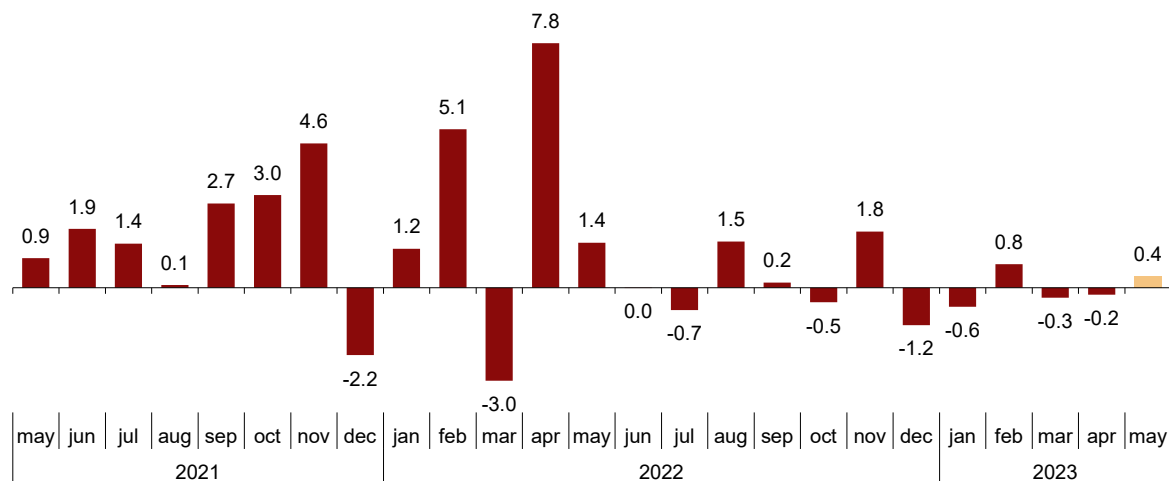
**The Turnover index in the¹ Market Services Sector stands at 0.4%,
after adjusting for seasonal and calendar effects**

**The annual rate stands at 1.0% in the series adjusted for seasonal
and calendar effects and at 1.2% in the original series**

Monthly trend in turnover for the Market Services Sector

After adjusting for seasonal and calendar effects, the monthly variation of the general index of turnover for the Market Services Sector between May and April was 0.4%. This rate is six tenths higher than that observed in April.

General index of the turnover for the Market Services Sector
Seasonally and calendar adjusted. Monthly rate. Percentage



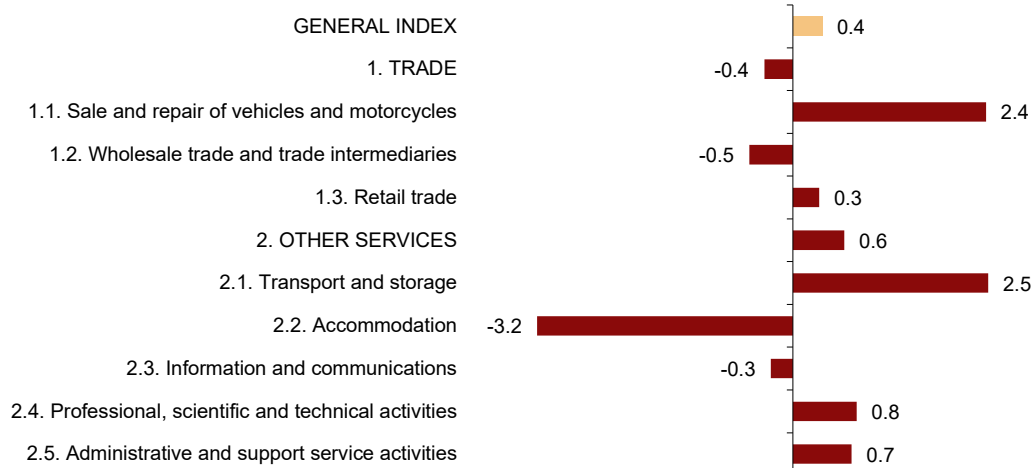
¹ As reflected in the methodology of this value index, the information is presented in current (nominal) terms, without adjusting the effects in the price variation.

After adjusting for seasonal and calendar effects, *Trade* decreased by 0.4% while *Other services* increased by 0.6%.

By sectors, *Transport and storage* (2.5%) and *Sale and repair of vehicles and motorcycles* (2.4%) registered the largest increases. In turn, *Accommodation* (-3.2%) and *Wholesale trade and trade intermediaries* (-0.5%) recorded the largest decreases.

General and by sectors turnover Index

Seasonally and calendar adjusted. May 2023. Monthly rate. Percentage



A more detailed analysis shows the branches of activity that registered the highest monthly rates and those with the highest decreases in the month of May.

Types of activities with the highest monthly rates in the Services Sector turnover index

Seasonally and calendar adjusted. May 2023. Monthly rate

Activity (CNAE-2009 groups)	Monthly rate(%)
Legal, accounting and management consulting activities	2.5
Sale and repair of vehicles	2.4
Other professional scientific and technical activities	2.3

Types of activities with the lowest monthly rates in the Services Sector turnover index

Seasonally and calendar adjusted. May 2023. Monthly rate

Activity (CNAE-2009 groups)	Monthly rate(%)
Accommodation	-5.3
Advertising and market research	-1.9
Information service activities	-1.4

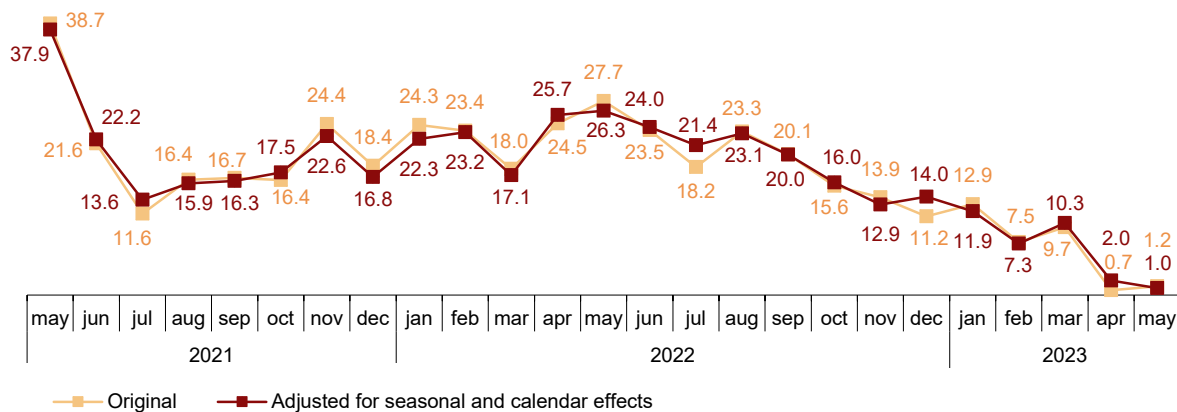
Annual trend in the turnover index for the Market Services Sector

The general index of the turnover for the Market Services Sector, after adjusting for seasonal and calendar effects, experienced a variation of 1.0% in May compared to the same month of 2022. This rate is one point lower than that recorded in April.

The original series presented an annual variation of 1.2%, which is five tenths above that registered in April.

General index of turnover for the Market Services Sector

Annual Rate. Percentage



After adjusting for seasonal and calendar effects, *Trade* decreased by 1.3% as compared with May 2022 while *Other services* increased by 5.5%.

By sectors, *Sale and repair of vehicles and motorcycles* (15.9%), *Administrative and support service activities* (11.2%) and *Professional, scientific and technical activities* (10.7%) registered the largest increases. In turn, *Wholesale trade* (-7.9%) and *Transport and storage* (-0.5%) recorded the only decreases.

Annual rates in Turnover index for the Market Services Sector: General and by sector. May 2023

	Original index	Seasonally adjusted index
	Annual rate (%)	Annual rate (%)
GENERAL INDEX	1.2	1.0
1. TRADE	-1.2	-1.3
1.1. Sale and repair of vehicles and motorcycles	17.3	15.9
1.2. Wholesale trade	-7.4	-7.9
1.3. Retail trade	8.8	9.2
2. OTHER SERVICES	6.2	5.5
2.1. Transport and storage	0.1	-0.5
2.2. Accommodation	8.5	8.3
2.3. Information and communications	6.0	6.0
2.4. Professional, scientific and technical activities	10.7	10.7
2.5. Administrative and support service activities	11.0	11.2

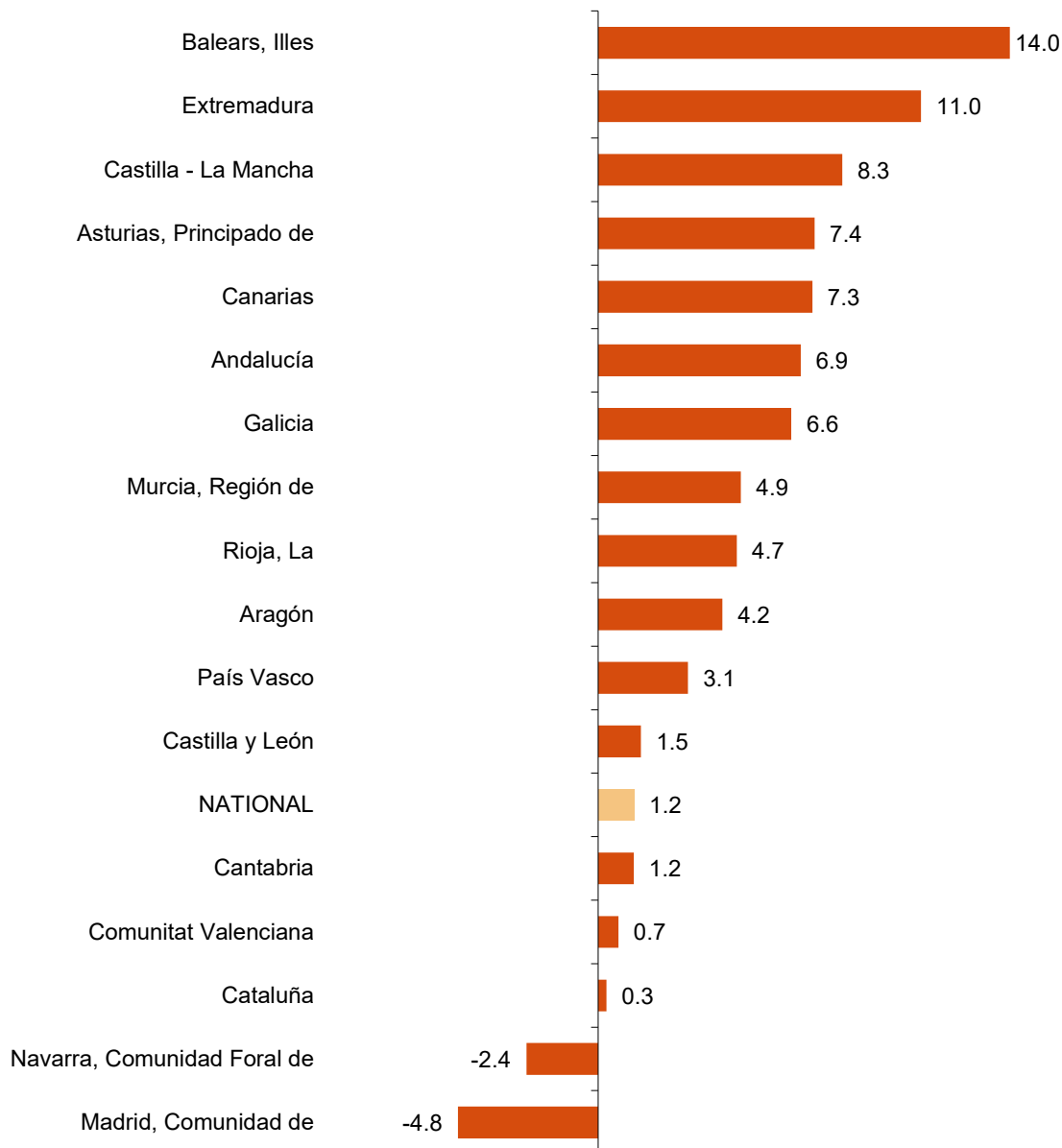
Results by Autonomous Community. Annual variation rates of the turnover index. Original series

Annual rate in Turnover index for the Market Services Sector increased as compared to May 2022 in 15 Autonomous Communities and decreased in the other two.

Illes Balears (14.0%), Extremadura (11.0%) and Castilla - La Mancha (8.3%) registered the largest increases. Comunidad de Madrid (-4.8%) and Comunidad Foral de Navarra (-2.4%) recorded the only decreases.

General Indices: National and by Autonomous Community

May 2023. Annual Rate. Percentage



Employment trend

The Employment in the Market Services Sector index experienced a variation of 1.7% in May as compared to the same month of the previous year. This rate is four tenths lower than that registered in April.

The employment rate increased by 1.6% in *Trade* and by 1.8% in *Other services*.

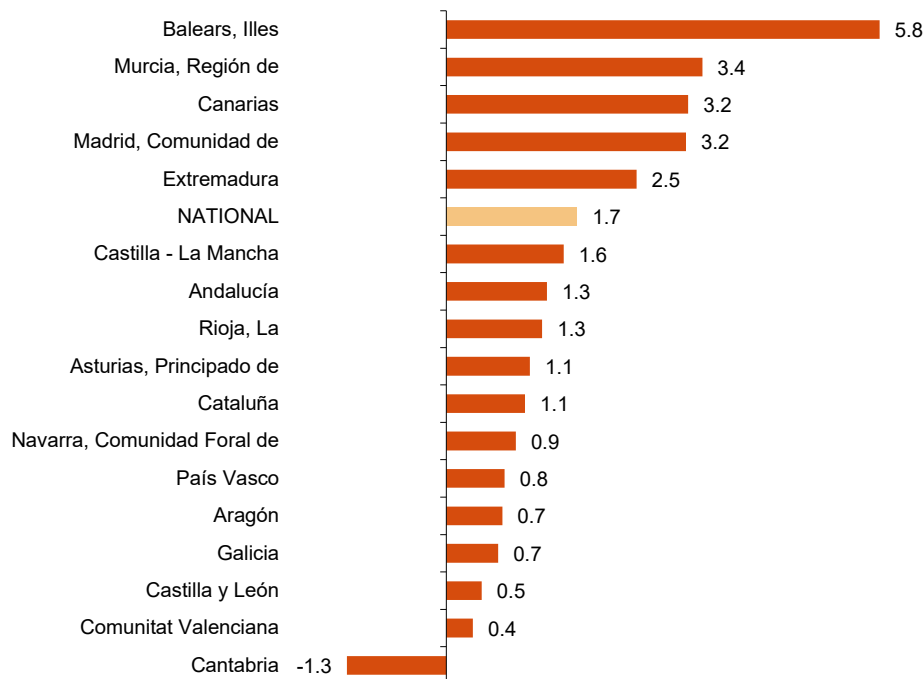
National Indices of employed personnel by sector. May 2023

	Index	Rate (%)	
		Monthly	Annual
GENERAL INDEX	112.3	1.2	1.7
1. TRADE	108.7	0.8	1.6
1.1. Sale and repair of vehicles and motorcycles	106.2	0.4	1.5
1.2. Wholesale trade	113.7	1.4	1.7
1.3. Retail trade	106.0	0.5	1.6
2. OTHER SERVICES	114.5	1.5	1.8
2.1. Transport and storage	113.5	0.7	3.0
2.2. Accommodation	110.1	2.5	2.0
2.3. Information and communications	123.4	0.6	4.6
2.4. Professional, scientific and technical activities	113.9	0.2	2.8
2.5. Administrative and support service activities	117.4	2.4	-0.9

Results by Autonomous Community. Annual employment variation rates index

Annual employment rate increased as compared to May 2022 in 16 Autonomous Communities and decreased only in one Autonomous Community. Illes Balears (5.8%) recorded the largest increase.

General Indices: National and by Autonomous Community May 2023. Annual rate. Percentage



Review and update of data

On the press release day, INE has updated SSAI data series corresponding to the last five months. In the case of calendar adjusted and seasonally and calendar adjusted series, according to INE standard, series are revised since its beginning. Results are available on INEBase.

Methodological note

The Services Sector Activity Indicators (SSAI) measure the short-term evolution of the activity of companies belonging to the Non-Financial Market Services sector through two variables: turnover and employed personnel. Turnover comprises the amounts invoiced by the company for provision of services and sale of goods. Employed personnel include both paid and unpaid personnel.

In order to obtain this data, an ongoing survey is conducted, every month researching more than 28,000 companies that operate in this sector. Results are presented as indices so as to measure variations as compared to the base year 2015.

The characteristics of this statistics are:

Type of survey: monthly continuous survey.

Base year: 2015.

Population scope: companies whose main economic activity is described in sections G, (Trade), H (Transport and Storage), I (Accommodation), J (Information and Communications), M (Professional, Scientific and Technical Activities) and N (Administrative and Support Services Activities) of the National Classification of Economic Activities (CNAE-09).

Geographical scope: all the national territory except for Ceuta and Melilla, for which it is only collected in division 47 of CNAE-09 (retail trade).

Sample size: 28,000 companies.

Type of sampling: stratified random sampling.

Collection method: completion of the questionnaire by the respondent using one of the following methods: internet (IRIA system), e-mail, fax, telephone or by postal mail.

For more information you can access the methodology at:

<https://www.ine.es/metodologia/t37/notaiass15.pdf>

And the standardised methodological report at:

<https://www.ine.es/dynt3/metadatos/es/RespuestaDatos.html?oe=30183>

INE statistics are produced in accordance with the Code of Good Practice for European Statistics, which is the basis for the institution's quality policy and strategy. For more information see the section on [Quality at INE and the Code of Best Practices](#) on the INE website.

For further information see INEbase: www.ine.es/en/ Twitter: [@es_ine](https://twitter.com/es_ine)

All press releases at: www.ine.es/en/prensa/prensa_en.htm

Press office: Telephone numbers: (+34) 91 583 93 63 /94 08 – gprensa@ine.es

Information Area: Telephone number: (+34) 91 583 91 00 – www.ine.es/infoine/?L=1

Services Sector Activity Indicators. Base 2015

May 2023

Provisional data

1. Turnover indices: General and by sector Seasonally and calendar adjusted

	Index	Rate (%)		
		Monthly	Annual	Year-to-date average
GENERAL INDEX	147.4	0.4	1.0	6.3
1. TRADE	149.8	-0.4	-1.3	4.7
1.1. Sale and repair of vehicles and motorcycles	147.8	2.4	15.9	19.4
1.2. Wholesale trade	154.1	-0.5	-7.9	0.5
1.3. Retail trade	135.2	0.3	9.2	11.1
2. OTHER SERVICES	143.5	0.6	5.5	10.1
2.1. Transport and storage	149.2	2.5	-0.5	5.9
2.2. Accommodation	129.6	-3.2	8.3	15.5
2.3. Information and communications	128.2	-0.3	6.0	6.9
2.4. Professional, scientific and technical activities	161.8	0.8	10.7	11.5
2.5. Administrative and support service activities	143.3	0.7	11.2	14.3

2. Turnover indices: General and by sector Calendar adjusted

	Index	Rate (%)	
		Annual	Year-to-date average
GENERAL INDEX	148.7	0.9	6.2
1. TRADE	151.4	-1.6	4.6
1.1. Sale and repair of vehicles and motorcycles	157.4	16.0	20.0
1.2. Wholesale trade	159.2	-7.8	0.2
1.3. Retail trade	133.9	8.3	11.0
2. OTHER SERVICES	143.9	6.1	9.5
2.1. Transport and storage	150.5	-0.3	5.7
2.2. Accommodation	132.0	8.7	15.1
2.3. Information and communications	126.4	5.9	6.7
2.4. Professional, scientific and technical activities	162.0	10.5	11.2
2.5. Administrative and support service activities	143.8	10.9	13.7

3. Turnover indices: General and by branch of activity
Original series

	Index	Rate (%)	
		Annual	Year-to-date average
GENERAL INDEX	149.7	1.2	6.1
1. TRADE	152.6	-1.2	4.6
1.1. SALE AND REPAIR OF VEHICLES	159.2	17.3	20.1
- Sale of motor vehicles	161.6	18.5	21.5
- Maintenance and repair of motor vehicles	143.5	9.0	10.9
1.2. WHOLESALE TRADE AND COMMISSION TRADE	160.8	-7.4	0.1
- Wholesale on a fee or contract basis	168.4	-4.3	-2.7
- Wholesale of agricultural raw materials and live animals	170.1	-2.2	4.8
- Wholesale of food, beverages and tobacco	155.5	8.2	11.0
- Wholesale of household goods	157.3	4.7	6.6
- Wholesale of information and communication equipment	146.6	2.8	10.5
- Wholesale of other machinery, equipment and supplies	187.4	-0.9	3.4
- Other specialised w holesale trade	161.6	-27.0	-13.4
- Non-specialised w holesale trade	200.4	0.6	4.9
1.3. RETAIL TRADE	134.6	8.8	11.1
2. OTHER SERVICES	144.4	6.2	9.4
2.1. TRANSPORTATION AND STORAGE SERVICES	151.7	0.1	5.7
Land transport	138.8	1.7	5.9
- Rail transport	97.2	-6.3	-5.6
- Taxi operation	120.1	12.4	16.1
- Other passenger land transport	113.4	5.1	6.8
- Freight transport by road and removal services	151.0	1.2	6.3
Water transport	150.3	5.3	20.3
Air transport	166.8	22.5	40.7
Warehousing and support activities for transportation	163.4	-5.6	0.1
Post and courier activities	133.9	2.5	1.8
2.2. ACCOMMODATION AND FOOD SERVICES ACTIVITIES	131.7	8.5	15.2
Accommodation	140.2	13.3	21.8
Food and beverage service activities	128.5	6.2	12.4
2.3. INFORMATION AND COMMUNICATION	126.9	6.0	6.6
Publishing activities	130.1	7.6	7.3
Motion picture, television programme production and music publishing activities	95.0	-6.3	-5.5
Programming and broadcasting activities	123.5	2.2	-0.1
Telecommunications	107.2	3.6	3.3
Computer programming, consultancy and related activities	154.0	10.3	12.1
Information service activities	149.9	0.7	6.5
2.4. PROFESSIONAL, SCIENTIFIC AND TECHNICAL ACTIVITIES	162.7	10.7	11.0
Legal, accounting and management consulting activities	170.9	10.9	10.7
Architectural and engineering activities; technical testing and analysis	152.1	16.5	14.1
Advertising and market research	156.4	2.0	5.3
Other professional scientific and technical activities	195.1	15.9	18.3
2.5. ADMINISTRATIVE AND SUPPORT SERVICE ACTIVITIES	144.3	11.0	13.6
Employment activities	151.5	-3.1	-6.8
Travel agencies and tour operator services	149.6	32.2	51.2
Security and investigation activities	167.9	9.7	7.2
Cleaning activities	140.1	5.8	5.4
Office administrative and other business support activities	148.0	-0.7	2.7

4. Employed personnel indices: General and by branch of activity

	Index	Rate (%)		
		Monthly	Annual	Year-to-date average
GENERAL INDEX	112.3	1.2	1.7	1.9
1. TRADE	108.7	0.8	1.6	1.5
1.1. SALE AND REPAIR OF VEHICLES	106.2	0.4	1.5	1.3
- Sale of motor vehicles	113.0	0.5	1.5	1.0
- Maintenance and repair of motor vehicles	99.3	0.2	1.5	1.7
1.2. WHOLESALE TRADE AND COMMISSION TRADE	113.7	1.4	1.7	1.5
- Wholesale on a fee or contract basis	107.2	0.7	0.6	0.2
- Wholesale of agricultural raw materials and live animals	115.8	0.5	0.9	1.2
- Wholesale of food, beverages and tobacco	117.2	3.1	1.9	1.2
- Wholesale of household goods	109.7	0.5	2.3	2.4
- Wholesale of information and communication equipment	118.2	0.3	4.1	4.1
- Wholesale of other machinery, equipment and supplies	115.2	0.9	1.3	0.8
- Other specialised w holesale trade	112.1	0.5	0.6	1.1
- Non-specialised w holesale trade	122.1	1.7	4.3	3.6
1.3. RETAIL TRADE	106.0	0.5	1.6	1.5
2. OTHER SERVICES	114.5	1.5	1.8	2.2
2.1. TRANSPORTATION AND STORAGE SERVICES	113.5	0.7	3.0	3.1
Land transport	111.2	0.9	2.9	2.6
- Rail transport	127.3	-0.2	13.8	14.1
- Taxi operation	102.2	1.2	3.2	3.6
- Other passenger land transport	112.4	0.8	3.9	4.4
- Freight transport by road and removal services	112.0	0.9	2.1	1.2
Water transport	127.6	3.6	5.8	7.4
Air transport	121.7	-3.2	3.4	7.7
Warehousing and support activities for transportation	122.7	0.7	3.7	4.5
Post and courier activities	100.1	0.5	1.3	0.4
2.2. ACCOMMODATION AND FOOD SERVICES ACTIVITIES	110.1	2.5	2.0	3.2
Accommodation	122.3	6.3	0.6	6.6
Food and beverage service activities	106.8	1.4	2.4	2.4
2.3. INFORMATION AND COMMUNICATION	123.4	0.6	4.6	4.8
Publishing activities	99.9	0.3	2.1	2.4
Motion picture, television programme production and music publishing activities	110.1	4.9	6.5	3.1
Programming and broadcasting activities	101.6	1.1	2.1	1.3
Telecommunications	92.5	0.2	0.9	1.2
Computer programming, consultancy and related activities	141.9	0.2	6.0	6.5
Information service activities	114.5	0.7	1.6	2.9
2.4. PROFESSIONAL, SCIENTIFIC AND TECHNICAL ACTIVITIES	113.9	0.2	2.8	3.0
Legal, accounting and management consulting activities	110.3	-0.1	1.8	2.5
Architectural and engineering activities; technical testing and analysis	125.0	0.0	4.3	4.4
Advertising and market research	105.6	0.9	2.9	2.3
Other professional scientific and technical activities	109.9	1.3	1.8	1.4
2.5. ADMINISTRATIVE AND SUPPORT SERVICE ACTIVITIES	117.4	2.4	-0.9	-0.8
Employment activities	125.3	6.8	-12.1	-11.0
Travel agencies and tour operator services	109.3	3.4	11.2	10.1
Security and investigation activities	129.2	1.1	4.0	3.3
Cleaning activities	108.0	1.3	0.5	0.2
Office administrative and other business support activities	123.0	1.4	2.5	2.3

5. Turnover indices: National and by Autonomous Community

	Index	Rate (%)	
		Annual	Year-to-date average
NATIONAL	149.7	1.2	6.1
Andalucía	150.3	6.9	9.9
Aragón	149.2	4.2	7.4
Asturias, Principado de	146.1	7.4	11.2
Balears, Illes	161.4	14.0	18.9
Canarias	130.8	7.3	12.8
Cantabria	156.7	1.2	7.0
Castilla y León	135.8	1.5	5.9
Castilla-La Mancha	152.4	8.3	8.6
Cataluña	145.0	0.3	6.7
Comunitat Valenciana	152.8	0.7	4.8
Extremadura	158.4	11.0	6.6
Galicia	175.8	6.6	9.3
Madrid, Comunidad de	149.1	-4.8	1.8
Murcia, Región de	152.6	4.9	8.5
Navarra, Comunidad Foral de	159.4	-2.4	5.4
País Vasco	154.2	3.1	6.2
Rioja, La	162.3	4.7	6.4

6. Employed personnel indices: National and by Autonomous Community

	Index	Rate (%)		
		Monthly	Annual	Year-to-date average
NATIONAL	112.3	1.2	1.7	1.9
Andalucía	110.0	0.6	1.3	1.7
Aragón	108.5	0.8	0.7	0.0
Asturias, Principado de	107.5	0.7	1.1	1.1
Balears, Illes	131.7	9.9	5.8	6.2
Canarias	108.2	-0.1	3.2	3.8
Cantabria	106.1	0.2	-1.3	-0.8
Castilla y León	103.5	0.6	0.5	0.4
Castilla-La Mancha	112.5	0.7	1.6	2.0
Cataluña	114.7	1.3	1.1	1.8
Comunitat Valenciana	110.7	0.9	0.4	0.5
Extremadura	111.4	2.1	2.5	2.0
Galicia	108.9	0.8	0.7	0.9
Madrid, Comunidad de	114.3	0.9	3.2	3.2
Murcia, Región de	123.2	4.8	3.4	1.9
Navarra, Comunidad Foral de	110.5	0.8	0.9	0.9
País Vasco	107.0	0.3	0.8	1.4
Rioja, La	109.2	0.7	1.3	0.7