

17 August 2010

Services Sector Activity Indicators. Base 2005
June 2010. *Provisional data*

Main results

- The interannual rate of the **Services Sector Turnover General Index** is **7.1% in June**, more than two points above that registered in May.
- The **average variation rate** of the Services Sector Turnover General Index reaches **2.5%** in the first six months of the year 2010.
- **Employed personnel decreases 1.1%**, as compared with June the previous year.
- Turnover in the services sector registers **positive interannual rates in all of the Autonomous Communities**, except in Canarias.

Evolution of turnover in the Services sector

Turnover in the market Services sector registered an increase of 7.1% in June 2010, as compared with the same month of the previous year, standing more than two points above that registered in May.

By sector, the interannual variation of *Trade* was 9.4%, whereas *Other Services* presented a rate of 2.8%.

Within *Trade*, all of the sectors presented increased interannual rates. *Sale and repair of motor vehicles and motorcycles* presented the most pronounced rate (23.4%), followed by *Wholesale trade and intermediaries* (10.6%) and *Retail trade* (3.1%).

Within *Other Services*, the sectors *Transport and storage* (7.5%) and *Professional, scientific and technical activities* (6.8%) registered a positive interannual rate. Conversely, among the industrial sectors with negative rates, of note were *Information and communications* (–1.2%), *Administrative and support service activities* (–0.8%) and *Accommodation* (–0.3%) presented negative rates.

Turnover by activity

Approximately half of the activities in the Services sector experienced an increase in turnover in June, in the interannual rate.

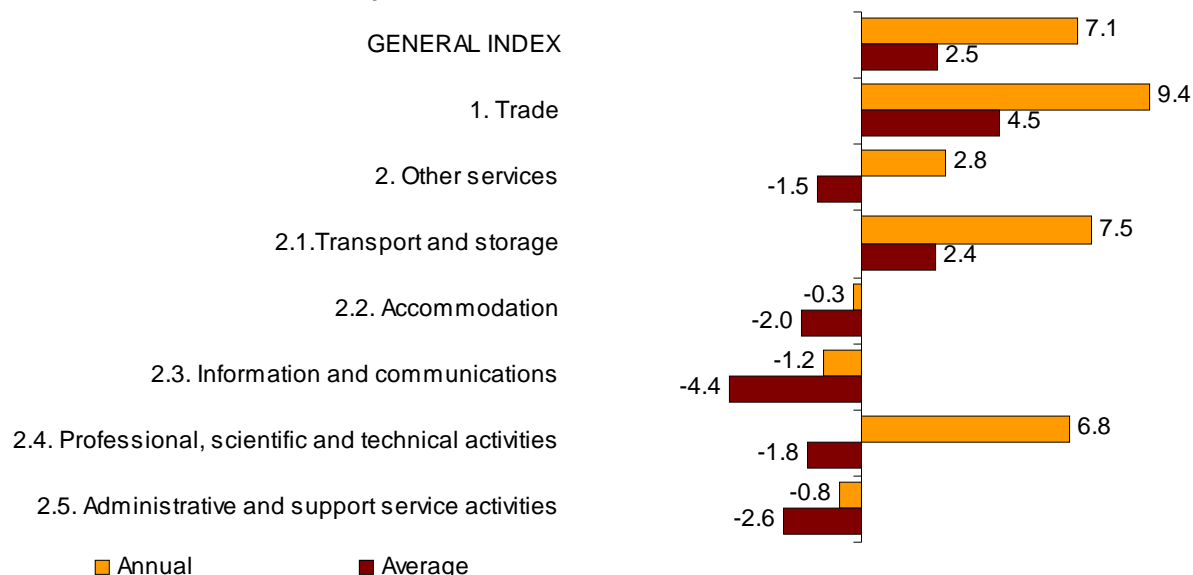
• **Trade.** The greatest increases were registered in *Sale of motor vehicles, motorcycles and spare parts* (25.1%) and *Wholesale of fuels, metals and similar products* (19.3%). The most pronounced drop was registered by *Trade of agricultural raw materials and live animals* and *Non-specialised trade* (both with -3.4%).

• **Other Services.** The activities that presented the greatest increases were *Sea transport and transport by domestic navigable routes* (17.3%) and *Employment-related activities* (16.4%). Conversely, those registering the greatest drops were *Office management activities* (-13.4%) and *Publishing* (-9.6%).

Year-to-date average rates

The average rate of the Services Sector Turnover General Index stood at 2.5% in the first six months of the year 2010. *Trade* registered an average rate of 4.5% in this period, whereas *Other services* presented a variation of -1.5%.

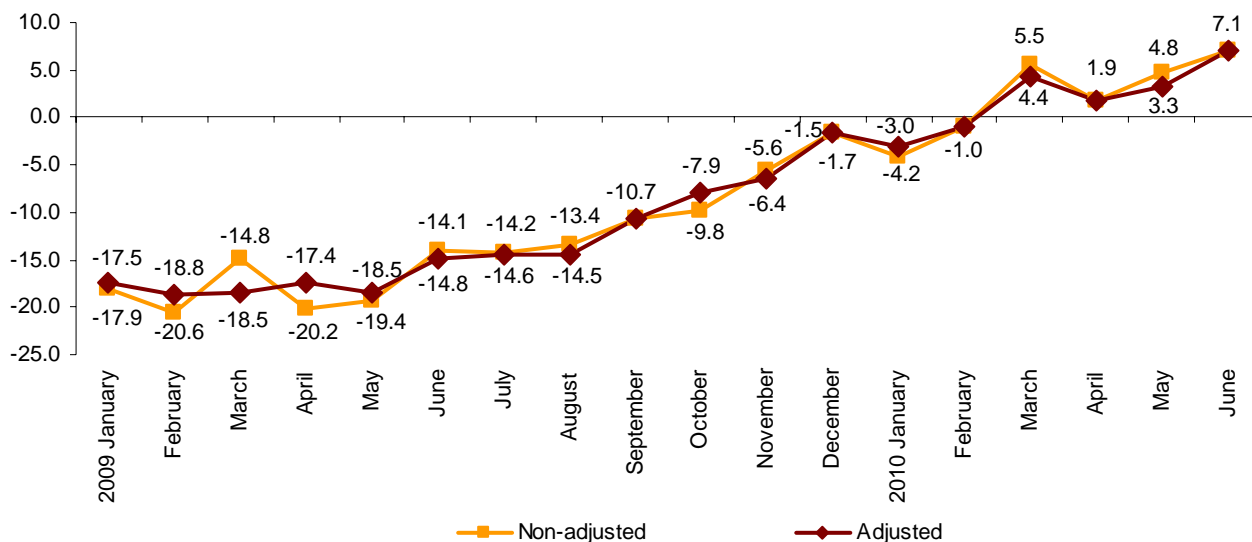
Annual rate and average turnover rate General Index and by turnover sector



Variation rates adjusted for the calendar effect

After eliminating the calendar effect, that is, the difference in the number of working days in a given month in different years, the interannual variation of the General Index of Services sector turnover registered a **7.1%** increase in June, almost four points higher than that registered the previous month.

Annual evolution of turnover for the services sector
Adjusted and Non-adjusted General Index



Evolution of employed personnel

Employment in the Services sector experienced an interannual decrease of 1.1% in the month of June. This indicated an increase of two tenths as compared with the rate registered in May.

All of the sectors experienced interannual decreases, except *Administrative and support service activities*, which presented an interannual increase of 1.3%. The greatest decrease was in *Information and communications* (-2.3%).

In the first six months of the year, the average rate of the General Index of employed personnel stood at -2.0%.

National employed personnel indices

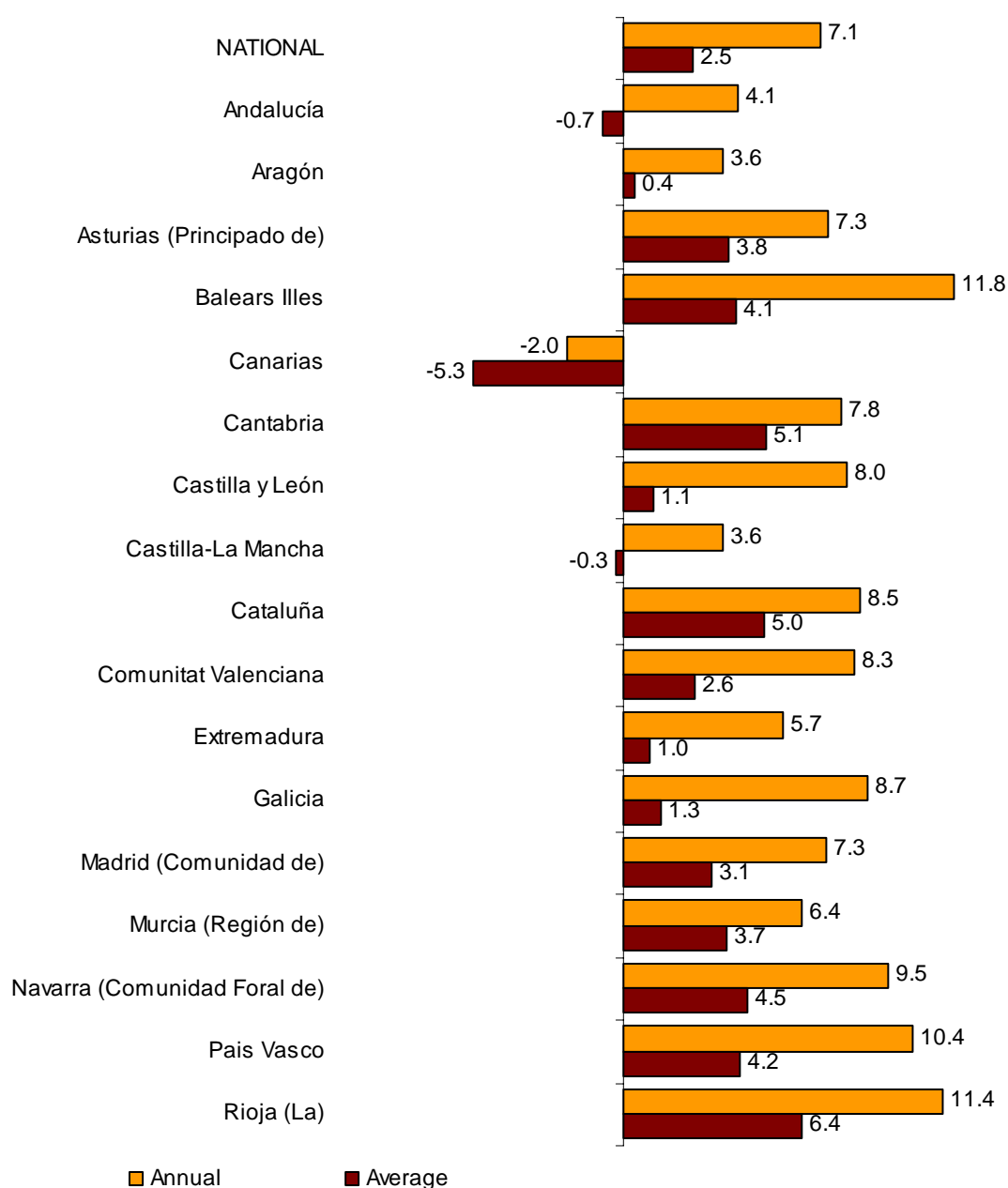
	Index	% variation	
		Annual	Year-to-date average
GENERAL INDEX	97.5	-1.1	-2.0
1. Trade	96.4	-1.5	-2.5
2. Other services	98.3	-0.8	-1.7
2.1. Transport and storage	97.6	-1.4	-2.3
2.2. Accommodation	96.9	-0.6	-1.5
2.3. Information and communications	102.5	-2.3	-3.2
2.4. Professional, scientific and technical activities	101.3	-2.2	-2.3
2.5. Administrative and support service activities	96.8	1.3	-0.1

Autonomous Communities. Turnover variation rates

In June 2010, all the Autonomous Communities registered positive interannual variation rates, except Canarias (−2.0%).

Illes Balears (11.8%) and La Rioja (11.4%) presented the greatest increases.

Annual rate and average turnover rate General Index by Autonomous Community

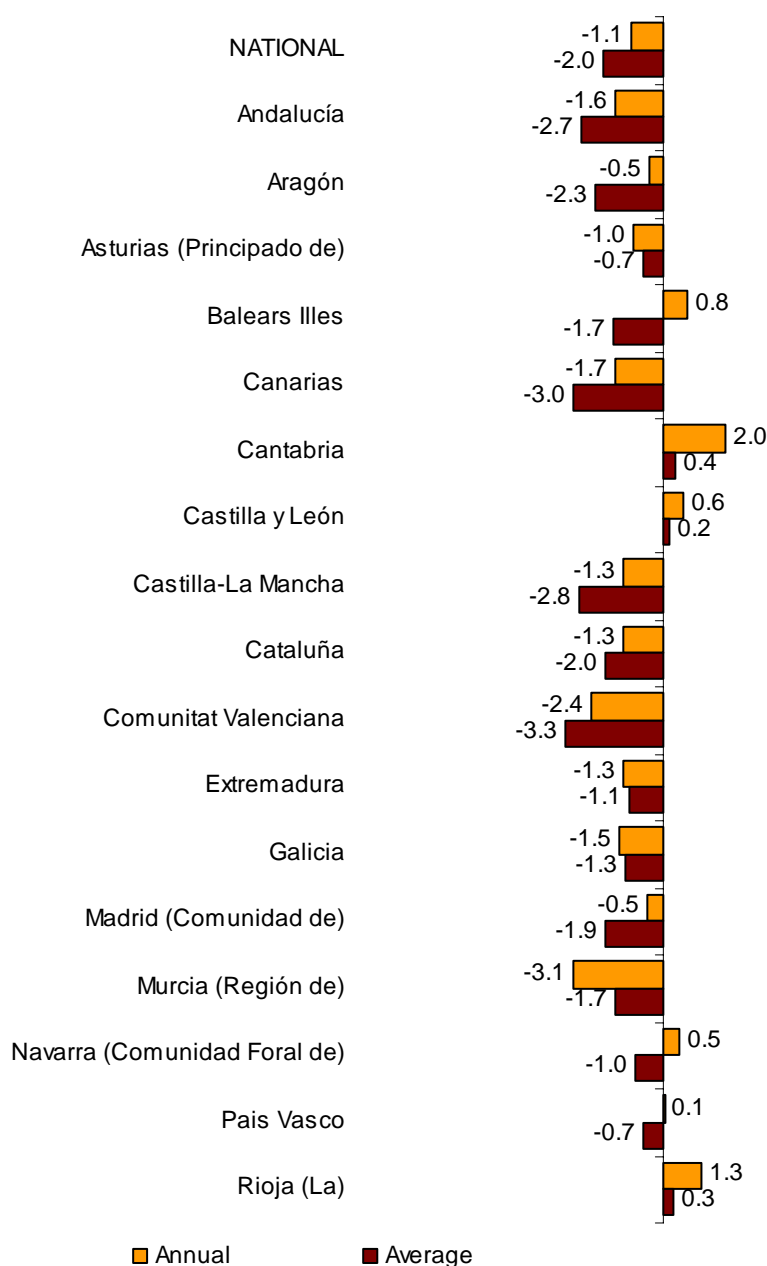


Autonomous Communities. Employed personnel variation rates

Employment in the services sector decreased in all of the Autonomous Communities, except in six of them. Those with the greatest decreases were Región de Murcia (–3.1%), Comunitat Valenciana (–2.4%) and Canarias (–1.7%).

Cantabria (2.0%), La Rioja (1.3%) and Illes Balears (0.8%) were the Communities with the greatest positive interannual rates.

Annual rate and average rate of employed staff General Index by Autonomous Community



Services Sector Activity Indicators. Base 2005

June 2010

Provisional data

1. Monthly turnover indices by sector

	Index	% variation	
		Annual	Year-to-date average
GENERAL INDEX	104.9	7.1	2.5
1. TRADE	102.7	9.4	4.5
Sale and repair of vehicles	88.1	23.4	19.5
- Sale of motor vehicles	84.9	25.1	22.4
- Maintenance and repair of motor vehicles	117.3	13.4	3.9
Wholesale trade	105.5	10.6	4.0
- Wholesale on a fee or contract basis	90.8	-2.8	-3.2
- Wholesale of agricultural raw materials and live animals	91.5	-3.4	-7.5
- Wholesale of food, beverages and tobacco	108.7	7.6	2.9
- Wholesale of household goods	110.4	7.7	3.9
- Wholesale of information and communication equipment	93.8	4.2	-2.1
- Wholesale of other machinery, equipment and supplies	95.8	12.7	-2.7
- Wholesale of fuels, metals and others	107.0	19.3	10.5
- Non-specialised wholesale trade	144.5	-3.4	-6.3
Retail trade	104.3	3.1	1.2
2. OTHER SERVICES	109.5	2.8	-1.5
2.1. TRANSPORTATION AND STORAGE SERVICES	108.7	7.5	2.4
Land transport	102.0	4.4	0.6
- Rail transport	131.1	2.6	1.2
- Taxi operation	111.0	5.0	2.1
- Other passenger land transport	122.8	1.7	1.1
- Freight transport by road and removal services	96.6	5.1	0.4
Water transport	134.6	17.3	3.7
Air transport	111.3	10.2	3.3
Warehousing and support activities for transportation	115.2	11.9	5.0
Post and courier activities	113.9	-1.9	-1.1
2.2. ACCOMMODATION AND FOOD SERVICES ACTIVITIES	104.0	-0.3	-2.0
Accommodation	118.2	6.1	1.2
Food and beverage service activities	98.2	-3.1	-3.2
2.3. INFORMATION AND COMMUNICATION	109.7	-1.2	-4.4
Publishing activities	103.8	-9.6	-8.9
Motion picture, television programme production and music publishing activities	107.4	-1.5	-8.4
Programming and broadcasting activities	97.2	2.8	-4.7
Telecommunications	100.4	-3.3	-4.9
Computer programming, consultancy and related activities	139.6	5.6	-0.1
Information service activities	131.1	1.5	-2.9
2.4. PROFESSIONAL, SCIENTIFIC AND TECHNICAL ACTIVITIES	110.2	6.8	-1.8
Legal, accounting and management consulting activities	119.6	9.3	1.6
Architectural and engineering activities; technical testing and analysis	99.4	1.8	-11.4
Advertising and market research	114.3	9.3	5.1
Other professional scientific and technical activities	94.0	6.2	-0.4
2.5. ADMINISTRATIVE AND SUPPORT SERVICE ACTIVITIES	116.3	-0.8	-2.6
Employment activities	90.9	16.4	12.2
Travel agencies and tour operator services	130.3	3.8	2.7
Security and investigation activities	115.4	-2.9	-3.7
Cleaning activities	129.8	5.8	3.6
Office administrative and other business support activities	100.7	-13.4	-13.7

2. National turnover indices, adjusted for the calendar effect

	Original index	% variation		Adjusted index	% variation	
		Annual	Year-to-date average		Annual	Year-to-date average
GENERAL INDEX	104.9	7.1	2.5	104.1	7.1	2.2
1. Trade	102.7	9.4	4.5	101.8	9.4	4.2
2. Other Services	109.5	2.8	-1.5	109.1	2.7	-1.6
2.1. Transportation and storage	108.7	7.5	2.4	107.9	7.5	2.1
2.2. Accommodation and food service activities	104.0	-0.3	-2.0	104.4	-0.2	-1.9
2.3. Information and communication	109.7	-1.2	-4.4	109.5	-1.3	-4.5
2.4. Professional, scientific and technical activities	110.2	6.8	-1.8	109.7	6.8	-1.7
2.5. Administrative and support service activities	116.3	-0.8	-2.6	116.1	-0.8	-2.7

3. Interannual rates. General Index and by sector

Period		General Index		Trade		Other Services		Transport and storage	
		Original	Adjusted ¹	Original	Adjusted ¹	Original	Adjusted ¹	Original	Adjusted ¹
2009	June	-14.1	-14.8	-15.6	-16.5	-11.2	-11.6	-12.8	-13.6
	July	-14.2	-14.6	-15.7	-16.2	-11.1	-11.4	-15.6	-15.9
	August	-13.4	-14.5	-15.5	-16.7	-9.6	-10.2	-13.1	-14.2
	September	-10.7	-10.7	-11.3	-11.3	-9.5	-9.5	-10.5	-10.5
	October	-9.8	-7.9	-9.9	-7.5	-9.8	-8.7	-12.6	-10.7
	November	-5.6	-6.4	-5.0	-6.0	-6.6	-7.1	-5.4	-6.2
	December	-1.7	-1.5	-1.2	-0.9	-2.8	-2.7	-2.7	-2.5
2010	January	-4.2	-3.0	-3.7	-2.2	-5.2	-4.5	-3.9	-2.7
	February*	-1.0	-1.0	0.9	0.9	-4.5	-4.5	-1.0	-1.0
	March*	5.5	4.4	8.8	7.4	-0.9	-1.5	4.1	3.0
	April*	1.9	1.9	4.1	4.1	-2.4	-2.4	1.1	1.1
	May*	4.8	3.3	7.0	5.2	0.7	-0.1	5.8	4.4
	June	7.1	7.1	9.4	9.4	2.8	2.7	7.5	7.5

Period		Accommodation		Information and communications		Professional, scientific and technical activities		Administrative and support service activities	
		Original	Adjusted ¹	Original	Adjusted ¹	Original	Adjusted ¹	Original	Adjusted ¹
2009	June	-10.4	-10.1	-7.8	-8.2	-15.6	-15.6	-8.4	-8.9
	July	-8.8	-8.7	-6.6	-7.0	-13.9	-13.9	-8.9	-9.2
	August	-7.6	-7.2	-4.9	-5.6	-12.5	-12.5	-9.9	-10.7
	September	-9.5	-9.5	-6.6	-6.6	-10.6	-10.6	-10.8	-10.8
	October	-5.2	-5.9	-9.1	-7.7	-11.9	-11.9	-7.5	-6.0
	November	-5.8	-5.5	-5.5	-6.2	-12.3	-12.3	-3.0	-3.7
	December	-4.9	-5.0	0.1	0.1	-3.1	-3.1	-5.6	-5.6
2010	January	-4.4	-4.8	-5.6	-4.8	-6.5	-6.5	-6.1	-5.3
	February*	-4.1	-4.1	-6.2	-6.2	-8.3	-8.3	-3.6	-3.6
	March*	-1.2	-0.9	-4.7	-5.4	-3.8	-3.8	0.6	-0.1
	April*	-1.4	-1.4	-6.7	-6.7	-0.4	-0.4	-5.1	-5.1
	May*	-1.5	-1.0	-1.9	-3.0	0.4	0.4	-1.3	-2.3
	June	-0.3	-0.2	-1.2	-1.3	6.8	6.8	-0.8	-0.8

¹ Index rates adjusted for calendar effects

* Revised data

4. National employed personnel indices by branch of activity

	Index	% variation	
		Annual	Year-to-date average
GENERAL INDEX	97.5	-1.1	-2.0
1. TRADE	96.4	-1.5	-2.5
Sale and repair of vehicles	92.5	-2.5	-3.3
- Sale of motor vehicles	89.2	-3.6	-4.9
- Maintenance and repair of motor vehicles	96.6	-1.2	-1.3
Wholesale trade	94.6	-2.0	-3.1
- Wholesale on a fee or contract basis	90.0	-4.1	-4.7
- Wholesale of agricultural raw materials and live animals	101.0	0.4	-0.3
- Wholesale of food, beverages and tobacco	96.4	0.2	-0.5
- Wholesale of household goods	94.4	-3.1	-3.9
- Wholesale of information and communication equipment	98.2	-3.6	-5.1
- Wholesale of other machinery, equipment and supplies	93.2	-3.5	-5.7
- Wholesale of fuels, metals and others	92.3	-2.2	-4.0
- Non-specialised wholesale trade	99.1	-3.3	-2.0
Retail trade	98.2	-1.0	-1.9
2. OTHER SERVICES	98.3	-0.8	-1.7
2.1. TRANSPORTATION AND STORAGE SERVICES	97.6	-1.4	-2.3
Land transport	97.5	-1.0	-1.9
- Rail transport	98.2	-1.4	-1.6
- Taxi operation	105.7	0.9	0.7
- Other passenger land transport	115.0	0.1	-0.4
- Freight transport by road and removal services	91.8	-1.7	-2.9
Water transport	95.1	-1.0	-4.5
Air transport	89.7	-2.5	-5.0
Warehousing and support activities for transportation	102.0	-1.3	-2.3
Post and courier activities	93.1	-3.3	-3.8
2.2. ACCOMMODATION AND FOOD SERVICES ACTIVITIES	96.9	-0.6	-1.5
Accommodation	105.8	0.7	-1.9
Food and beverage service activities	94.4	-1.0	-1.4
2.3. INFORMATION AND COMMUNICATION	102.5	-2.3	-3.2
Publishing activities	92.0	-7.0	-6.0
Motion picture, television programme production and music publishing activities	99.6	-0.8	-2.7
Programming and broadcasting activities	100.7	-0.5	-1.3
Telecommunications	90.8	-0.7	-1.1
Computer programming, consultancy and related activities	111.9	-2.0	-3.5
Information service activities	108.4	-2.1	-2.1
2.4. PROFESSIONAL, SCIENTIFIC AND TECHNICAL ACTIVITIES	101.3	-2.2	-2.3
Legal, accounting and management consulting activities	106.9	1.1	0.9
Architectural and engineering activities; technical testing and analysis	100.6	-5.3	-5.2
Advertising and market research	88.0	-5.0	-6.3
Other professional scientific and technical activities	96.8	-3.1	-3.0
2.5. ADMINISTRATIVE AND SUPPORT SERVICE ACTIVITIES	96.8	1.3	-0.1
Employment activities	76.5	9.7	9.4
Travel agencies and tour operator services	94.6	-3.2	-5.5
Security and investigation activities	113.1	-1.1	-2.7
Cleaning activities	105.8	0.4	-0.2
Office administrative and other business support activities	97.2	-1.4	-4.0

5. General turnover index by Autonomous Community

	Index	% variation	
		Annual	Year-to-date average
NATIONAL INDEX	104.9	7.1	2.5
Andalucía	96.7	4.1	-0.7
Aragón	108.0	3.6	0.4
Asturias (Principado de)	108.5	7.3	3.8
Balears (Illes)	127.6	11.8	4.1
Canarias	85.2	-2.0	-5.3
Cantabria	103.6	7.8	5.1
Castilla y León	105.5	8.0	1.1
Castilla-La Mancha	95.3	3.6	-0.3
Cataluña	107.5	8.5	5.0
Comunitat Valenciana	96.6	8.3	2.6
Extremadura	107.5	5.7	1.0
Galicia	113.6	8.7	1.3
Madrid (Comunidad de)	107.9	7.3	3.1
Murcia (Región de)	102.4	6.4	3.7
Navarra (Comunidad Foral de)	115.1	9.5	4.5
País Vasco	111.6	10.4	4.2
Rioja (La)	110.7	11.4	6.4

6. General employed personnel index by Autonomous Community

	Index	% variation	
		Annual	Year-to-date average
NATIONAL INDEX	97.5	-1.1	-2.0
Andalucía	98.2	-1.6	-2.7
Aragón	98.1	-0.5	-2.3
Asturias (Principado de)	103.0	-1.0	-0.7
Balears (Illes)	112.2	0.8	-1.7
Canarias	90.7	-1.7	-3.0
Cantabria	102.3	2.0	0.4
Castilla y León	102.0	0.6	0.2
Castilla-La Mancha	95.2	-1.3	-2.8
Cataluña	96.3	-1.3	-2.0
Comunitat Valenciana	90.1	-2.4	-3.3
Extremadura	100.7	-1.3	-1.1
Galicia	102.2	-1.5	-1.3
Madrid (Comunidad de)	97.6	-0.5	-1.9
Murcia (Región de)	100.3	-3.1	-1.7
Navarra (Comunidad Foral de)	99.4	0.5	-1.0
País Vasco	99.1	0.1	-0.7
Rioja (La)	100.6	1.3	0.3