

18 September 2013

Services Sector Activity Indicators (SSAI). Base 2010
July 2013. *Provisional data*

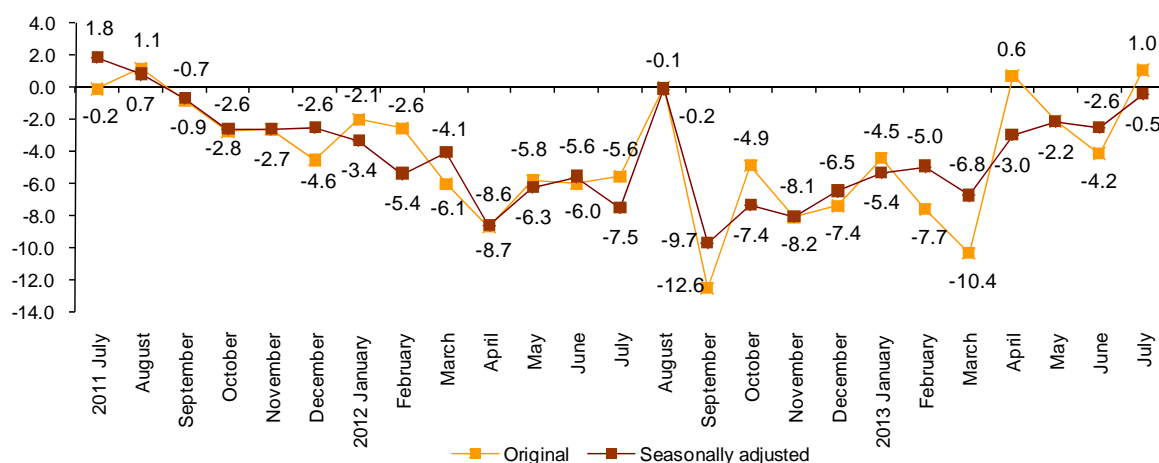
The annual rate of turnover for the market Services Sector stands at –0.5% in the seasonally and calendar adjusted series and at 1.0% in the original series

The monthly variation is 1.0% after adjusting for seasonal and calendar effects

The turnover for the market Services Sector registered a variation of 1.0% in July, as compared with the same month of the previous year. This rate was 5.2 points higher than that registered in June.

After adjusting for seasonal and calendar effects, the annual rate was –0.5%, two points and one tenth higher than that registered in June.

General index of the turnover for the Market Services Sector
Annual Rate



*Seasonally adjusted: adjusted for season and calendar effects.

Annual evolution of turnover for the Services Sector

Trade increased 2.6% while Other Services decreased 1.7%.

By sectors, *Wholesale trade* (4.6%) registered the greatest increase. On the other hand, *Information and communications* registered the greatest decrease with a rate of –5.9%.

After adjusting for seasonal and calendar effects, all sectors presented negative rates as compared with July of the previous year, except *Wholesale trade* (2.3%) and *Accommodation* (1.9%).

Annual rates of the national Turnover index by sector

	Original index	Seasonally adjusted index
	Annual rate (%)	Annual rate (%)
GENERAL INDEX	1.0	-0.5
1. Trade	2.6	0.9
1.1. Sale and repair of vehicles and motorcycles	2.4	-2.0
1.2. Wholesale trade	4.6	2.3
1.3. Retail trade	-0.3	-2.0
2. Other services	-1.7	-2.7
2.1. Transport and storage	0.8	-1.0
2.2. Accommodation	1.8	1.9
2.3. Information and communications	-5.9	-6.8
2.4. Professional, scientific and technical activities	-3.4	-4.9
2.5. Administrative and support service activities	-2.9	-3.6

A more detailed analysis showed the activities that registered the highest annual rates and those that registered the greatest decreases in July.

Activities with the greatest annual rates of the Services Sector turnover

Activity (Elementary aggregate)	Gross Index	Annual rate (%)
Employment activities	110.7	8.4
Other specialised wholesale trade	105.3	7.7
Programming and broadcasting activities	74.1	5.5
Wholesale of food, beverages and tobacco	96.9	5.4

Activities with the lowest annual rates of the Services Sector turnover

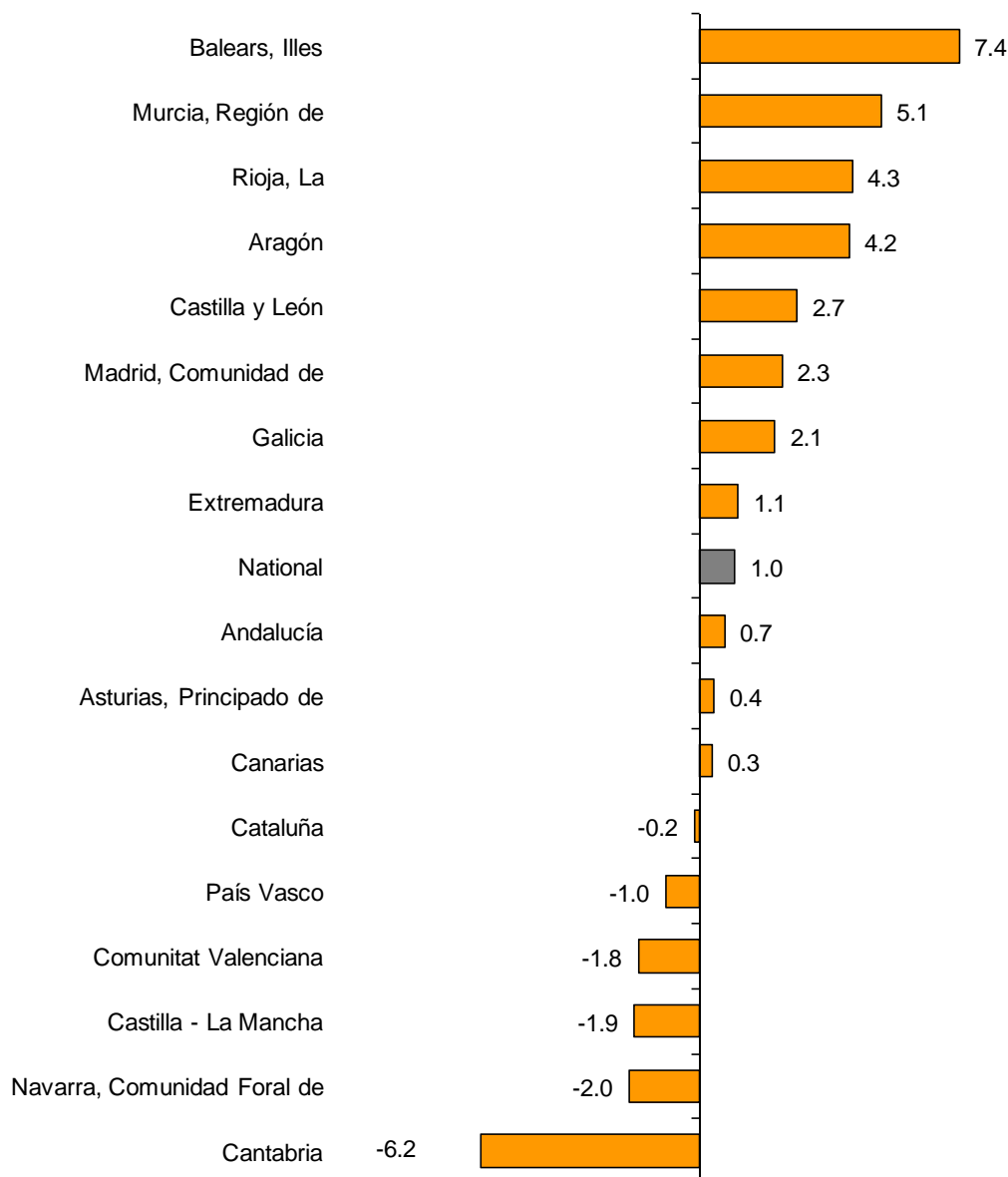
Activity (Elementary aggregate)	Gross Index	Annual rate (%)
Motion picture, television programme production and music publishing activities	68.3	-20.8
Water transport	89.9	-19.0
Architectural and engineering activities; technical testing and analysis	92.0	-10.2
Publishing activities	100.3	-9.0

Results by Autonomous Community. Annual turnover variation rates

In July, eleven Autonomous Communities registered positive annual rates of turnover in the market Service Sector. Illes Balears (7.4%) and Región de Murcia (5.1%) registered the highest increases.

In turn, Cantabria (−6.2%) registered the greatest decrease.

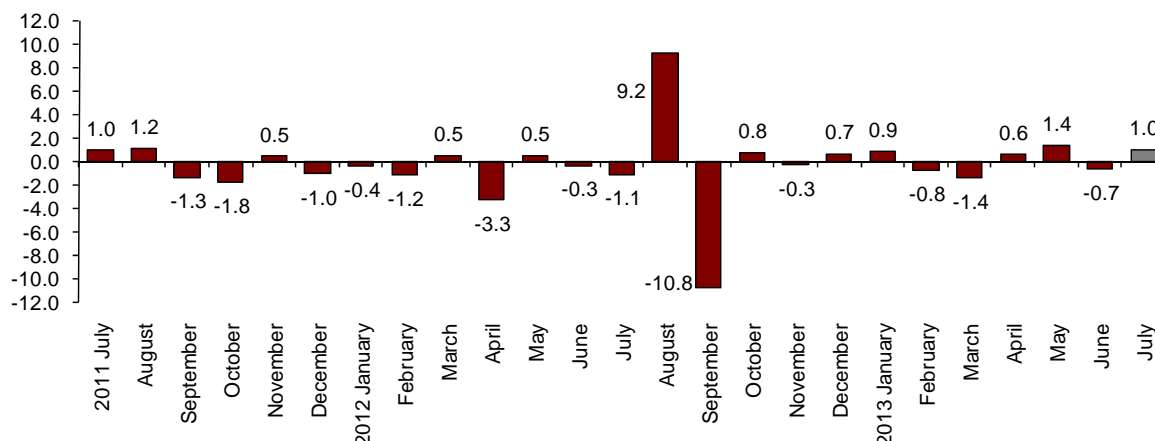
General Index by Autonomous Community Turnover Annual Rate



Monthly evolution of the Services Sector Turnover adjusted for seasonal and calendar effects

After eliminating the seasonal and calendar effect, the monthly variation of the General Index of market Services Sector Turnover between July and June stood at 1.0%. This rate was 1.7 points higher than that registered in June.

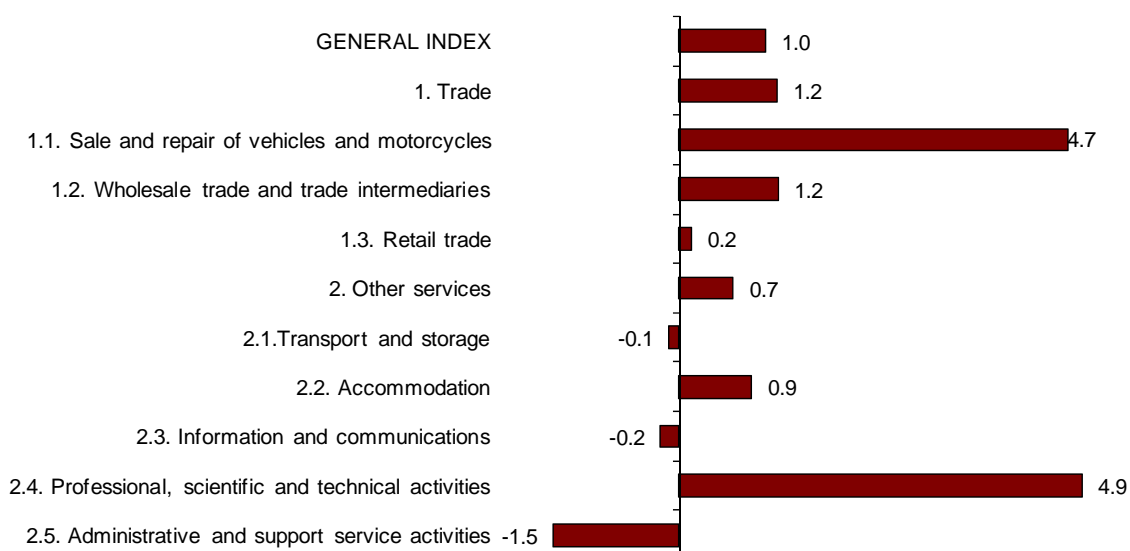
**General index of the turnover for the Market Services Sector
Adjusted for seasonal and calendar effects. Monthly Rate**



Monthly evolution of the Turnover by sectors adjusted for seasonal and calendar effects

After eliminating the seasonal and calendar effect, the monthly variations of Trade (1.2%) and Other Services (0.7%) were positive. By sector, *Professional, scientific and technical activities* (4.9%) and *Sale and repair of vehicles and motorcycles* (4.7%) registered the most positive rates.

**General turnover Index and by sectors
Adjusted for seasonal and calendar effects. Monthly rate**



Evolution of occupation

Employment in the market Services Sector experienced a variation of -1.1% in July, as compared with the same month of previous year. This rate increased three tenths as compared with June.

Trade and Other Services registered an annual variation of -1.4% and -0.9% , respectively.

All sectors registered negative rates, except *Accommodation* (0.8%). *Sale and repair of vehicles and motorcycles* and *Information and communications* registered the greatest decreases (-3.4% and -3.1% respectively).

National Indices of employed personnel by sector

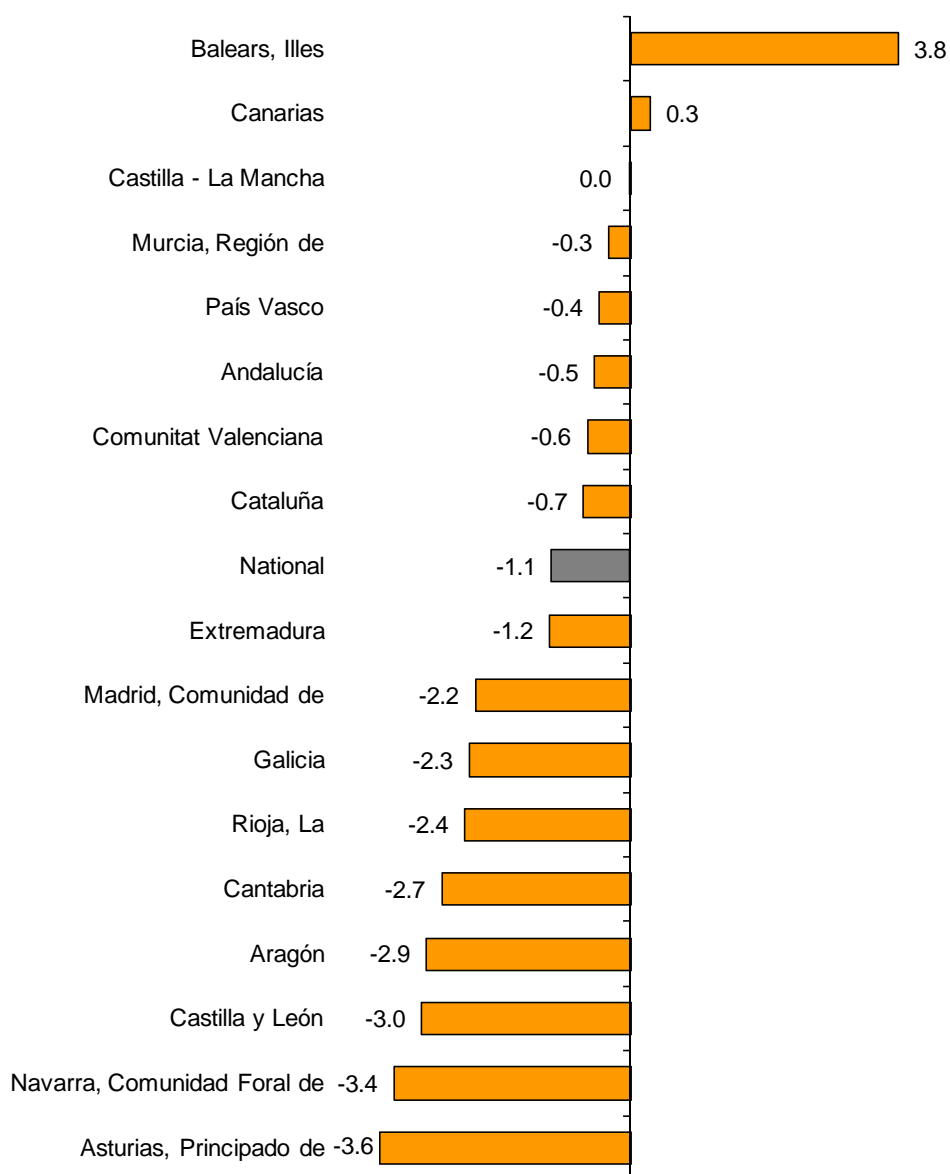
	Index	Monthly rate (%)	Annual rate (%)
GENERAL INDEX	95.9	0.3	-1.1
1. Trade	95.1	0.5	-1.4
1.1. Sale and repair of vehicles and motorcycles	88.4	0.2	-3.4
1.2. Wholesale trade	94.5	-0.1	-0.3
1.3. Retail trade	96.7	0.9	-1.7
2. Other services	96.5	0.2	-0.9
2.1. Transport and storage	94.8	0.2	-2.1
2.2. Accommodation	100.9	0.9	0.8
2.3. Information and communications	93.5	0.1	-3.1
2.4. Professional, scientific and technical activities	94.7	-0.5	-1.1
2.5. Administrative and support service activities	95.0	0.0	-0.9

Results, by Autonomous Community. Variation rates of occupation

All Autonomous Communities registered negative rates in employment, as compared with June of 2012, except Illes Balears (3.8%) and Canarias (0.3%). Castilla-La Mancha remained the same (0.0%).

The greatest decreases were registered in Asturias (–3.6%), Comunidad Foral de Navarra (–3.4%) and Castilla y León (–3.0%).

General Index by Autonomous Community Annual rate of employed personnel



Services Sector Activity Indicators. Base 2010

July 2013

Provisional data

1. Monthly turnover indices by sector

	Index	% variation		
		Monthly	Annual	Year-to-date average
GENERAL INDEX	99.8	7.3	1.0	-3.9
1. TRADE	97.6	7.5	2.6	-3.7
1.1. SALE AND REPAIR OF VEHICLES	84.8	10.1	2.4	-10.2
- Sale of motor vehicles	83.3	9.8	4.0	-10.7
- Maintenance and repair of motor vehicles	93.4	11.9	-5.2	-7.8
1.2. WHOLESALE TRADE AND COMMISSION TRADE	98.0	5.8	4.6	-2.3
- Wholesale on a fee or contract basis	97.2	-10.0	1.5	-0.6
- Wholesale of agricultural raw materials and live animals	99.5	-3.7	-1.5	0.4
- Wholesale of food, beverages and tobacco	96.9	4.3	5.4	0.4
- Wholesale of household goods	101.1	7.4	4.8	-2.0
- Wholesale of information and communication equipment	77.4	4.4	3.8	-3.1
- Wholesale of other machinery, equipment and supplies	89.8	2.4	-4.5	-9.3
- Other specialised wholesale trade	105.3	9.9	7.7	-3.5
- Non-specialised wholesale trade	98.6	-15.2	-0.5	-4.9
1.3. RETAIL TRADE	100.3	9.8	-0.3	-4.2
2. OTHER SERVICES	103.8	7.0	-1.7	-4.3
2.1. TRANSPORTATION AND STORAGE SERVICES	108.7	7.4	0.8	-1.4
Land transport	99.3	4.1	-1.0	-2.6
- Rail transport	101.3	-2.5	-0.1	0.5
- Taxi operation	109.6	3.4	1.3	-3.0
- Other passenger land transport	88.3	-13.7	-8.4	-7.5
- Freight transport by road and removal services	100.8	9.0	0.3	-1.8
Water transport	89.9	20.8	-19.0	-13.6
Air transport	126.9	11.6	0.9	-3.8
Warehousing and support activities for transportation	120.0	9.6	3.7	1.3
Post and courier activities	89.4	4.9	-1.2	-4.5
2.2. ACCOMMODATION AND FOOD SERVICES ACTIVITIES	117.7	13.5	1.8	-2.2
Accommodation	162.8	27.4	5.1	0.8
Food and beverage service activities	100.5	6.0	-0.3	-3.5
2.3. INFORMATION AND COMMUNICATION	88.6	-1.4	-5.9	-6.6
Publishing activities	100.3	0.7	-9.0	-5.6
Motion picture, television programme production and music publishing activities	68.3	-6.3	-20.8	-15.2
Programming and broadcasting activities	74.1	-22.2	5.5	-2.6
Telecommunications	80.6	0.3	-8.2	-8.6
Computer programming, consultancy and related activities	106.0	0.3	0.1	-2.7
Information service activities	98.7	-2.9	-8.8	-7.5
2.4. PROFESSIONAL, SCIENTIFIC AND TECHNICAL ACTIVITIES	99.1	7.2	-3.4	-6.6
Legal, accounting and management consulting activities	114.9	15.0	2.3	-3.8
Architectural and engineering activities; technical testing and analysis	92.0	3.9	-10.2	-7.5
Advertising and market research	85.4	-4.1	-1.4	-9.4
Other professional scientific and technical activities	100.1	19.0	-7.8	-7.9
2.5. ADMINISTRATIVE AND SUPPORT SERVICE ACTIVITIES	115.5	10.4	-2.9	-5.7
Employment activities	110.7	16.3	8.4	-0.6
Travel agencies and tour operator services	146.3	22.5	-5.5	-6.4
Security and investigation activities	96.4	1.7	0.4	-2.1
Cleaning activities	95.4	-1.9	0.0	-3.4
Office administrative and other business support activities	82.5	-4.2	-3.9	-10.5

2. National turnover indices, adjusted for the calendar effect

	Adjusted index	% variation		
		Monthly	Annual	Year-to-date average
GENERAL INDEX	98.6	3.8	-0.3	-3.6
1. Trade	96.1	3.3	1.0	-3.3
1.1. Sale and repair of vehicles	83.1	4.9	-1.2	-9.5
1.2. Wholesale trade	96.3	0.5	2.5	-2.0
1.3. Retail trade	99.4	7.4	-2.0	-4.0
2. Other Services	103.1	4.9	-2.5	-4.0
2.1. Transportation and storage	107.3	3.9	-0.5	-1.1
2.2. Accommodation and food service activities	118.1	14.8	2.2	-1.9
2.3. Information and communication	87.8	-3.7	-6.8	-6.3
2.4. Professional, scientific and technical activities	98.4	5.0	-4.2	-6.6
2.5. Administrative and support service activities	114.8	8.6	-3.6	-5.3

3. National turnover indices, adjusted for seasonal effects and by calendar

	index	% variation		
		Monthly	Annual	Year-to-date average
GENERAL INDEX	91.2	1.0	-0.5	-3.7
1. Trade	90.5	1.2	0.9	-3.4
1.1. Sale and repair of vehicles	74.6	4.7	-2.0	-9.8
1.2. Wholesale trade	92.8	1.2	2.3	-2.0
1.3. Retail trade	92.0	0.2	-2.0	-4.0
2. Other Services	91.9	0.7	-2.7	-4.2
2.1. Transportation and storage	98.6	-0.1	-1.0	-1.3
2.2. Accommodation and food service activities	95.3	0.9	1.9	-2.4
2.3. Information and communication	87.0	-0.2	-6.8	-6.3
2.4. Professional, scientific and technical activities	90.0	4.9	-4.9	-6.8
2.5. Administrative and support service activities	90.3	-1.5	-3.6	-5.5

4. National turnover indices Seasonally adjusted

		% variation		
		Annual ¹	Quarterly ²	Monthly ³
2009		-13.6		
2010		0.8		
2011		-1.0		
2012		-6.1		
2013		-3.7		
2011	TIII	0.6	-0.1	
	TIV	-2.6	-2.3	
2012	TI	-4.3	-1.5	
	TII	-6.9	-3.1	
	TIII	-5.8	1.1	
	TIV	-7.3	-3.9	
2013	TI	-5.7	0.2	
	TII	-2.6	0.1	
	TIII	-0.5	1.0	
2012	JUL	-7.5		-1.1
	AUG	-0.2		9.2
	SEP	-9.7		-10.8
	OCT	-7.4		0.8
	NOV	-8.1		-0.3
	DEC	-6.5		0.7
	JAN	-5.4		0.9
2013	FEB	-5.0		-0.8
	MAR	-6.8		-1.4
	APR	-3.0		0.6
	MAY	-2.2		1.4
	JUN	-2.6		-0.7
	JUL	-0.5		1.0

Note:

¹ **Annual rate:** Variation of a period over the same period of the previous year

² **Quarterly rate:** Variation of a quarter over the previous quarter. In the current quarter it is the average to date over the previous quarter

³ **Monthly rate:** Variation of a month over the previous month

5. National employed personnel indices by branch of activity

	Index	% variation		
		Monthly	Annual	Year-to-date average
GENERAL INDEX	95.9	0.3	-1.1	-2.0
1. TRADE	95.1	0.5	-1.4	-2.1
1.1. SALE AND REPAIR OF VEHICLES	88.4	0.2	-3.4	-4.3
- Sale of motor vehicles	85.4	0.0	-4.8	-5.7
- Maintenance and repair of motor vehicles	91.8	0.5	-2.0	-2.8
1.2. WHOLESALE TRADE AND COMMISSION TRADE	94.5	-0.1	-0.3	-1.6
- Wholesale on a fee or contract basis	96.0	-0.4	-0.5	-1.3
- Wholesale of agricultural raw materials and live animals	100.6	1.4	-0.6	-1.4
- Wholesale of food, beverages and tobacco	96.1	-1.1	1.5	-0.1
- Wholesale of household goods	94.2	0.1	-0.7	-1.0
- Wholesale of information and communication equipment	95.8	-0.1	-0.2	-2.2
- Wholesale of other machinery, equipment and supplies	92.8	0.1	-0.3	-3.2
- Other specialised wholesale trade	91.0	1.0	-2.2	-3.6
- Non-specialised wholesale trade	93.2	0.3	-5.8	-5.8
1.3. RETAIL TRADE	96.7	0.9	-1.7	-2.0
2. OTHER SERVICES	96.5	0.2	-0.9	-1.9
2.1. TRANSPORTATION AND STORAGE SERVICES	94.8	0.2	-2.1	-2.4
Land transport	94.5	-0.4	-1.8	-2.1
- Rail transport	99.0	0.0	-0.4	-0.7
- Taxi operation	99.8	0.4	-0.6	-1.8
- Other passenger land transport	95.1	-4.0	-1.1	-2.0
- Freight transport by road and removal services	93.1	0.5	-2.3	-2.3
Water transport	102.0	1.5	-2.4	-6.2
Air transport	94.9	0.3	-4.1	-3.9
Warehousing and support activities for transportation	97.7	0.5	-1.3	-2.0
Post and courier activities	89.2	2.9	-4.6	-3.8
2.2. ACCOMMODATION AND FOOD SERVICES ACTIVITIES	100.9	0.9	0.8	-0.8
Accommodation	111.3	4.1	0.4	-1.7
Food and beverage service activities	98.3	0.0	0.9	-0.5
2.3. INFORMATION AND COMMUNICATION	93.5	0.1	-3.1	-3.8
Publishing activities	83.6	0.2	-5.2	-6.6
Motion picture, television programme production and music publishing activities	75.5	-3.1	-10.4	-12.4
Programming and broadcasting activities	91.0	1.7	-3.2	-7.9
Telecommunications	87.7	-0.6	-4.9	-5.0
Computer programming, consultancy and related activities	101.1	0.4	-1.3	-1.2
Information service activities	95.9	0.6	-3.1	-3.1
2.4. PROFESSIONAL, SCIENTIFIC AND TECHNICAL ACTIVITIES	94.7	-0.5	-1.1	-2.1
Legal, accounting and management consulting activities	97.9	-0.3	-0.6	-0.6
Architectural and engineering activities; technical testing and analysis	90.8	-0.4	-1.1	-3.5
Advertising and market research	90.1	-2.6	-4.1	-4.9
Other professional scientific and technical activities	95.3	0.4	-1.2	-1.8
2.5. ADMINISTRATIVE AND SUPPORT SERVICE ACTIVITIES	95.0	0.0	-0.9	-1.9
Employment activities	97.3	1.6	3.1	-0.1
Travel agencies and tour operator services	92.1	2.3	-5.1	-4.9
Security and investigation activities	92.1	0.2	-3.9	-3.4
Cleaning activities	94.8	0.2	-1.0	-1.7
Office administrative and other business support activities	95.5	-2.7	-0.8	-2.1

6. General turnover index by Autonomous Community

	Index	% variation		
		Monthly	Annual	Year-to-date average
NATIONAL INDEX	99.8	7.3	1.0	-3.9
Andalucía	94.3	5.1	0.7	-3.8
Aragón	103.9	11.8	4.2	-2.5
Asturias, Principado de	96.4	12.4	0.4	-4.4
Balears, Illes	146.3	18.4	7.4	4.1
Canarias	104.0	12.9	0.3	-3.7
Cantabria	97.9	14.7	-6.2	-7.6
Castilla y León	102.2	9.6	2.7	-1.7
Castilla-La Mancha	95.0	7.3	-1.9	-5.0
Cataluña	104.3	11.0	-0.2	-4.4
Comunitat Valenciana	99.9	7.4	-1.8	-4.2
Extremadura	94.0	9.8	1.1	-6.2
Galicia	99.9	7.6	2.1	-4.6
Madrid, Comunidad de	95.7	2.5	2.3	-4.2
Murcia, Región de	104.0	8.2	5.1	-0.6
Navarra, Comunidad Foral de	91.1	1.2	-2.0	-6.1
País Vasco	94.6	5.6	-1.0	-5.1
Rioja, La	105.2	9.6	4.3	0.3

7. General employed personnel index by Autonomous Community

	Index	% variation		
		Monthly	Annual	Year-to-date average
NATIONAL INDEX	95.9	0.3	-1.1	-2.0
Andalucía	94.9	-0.7	-0.5	-1.8
Aragón	93.5	0.6	-2.9	-2.2
Asturias, Principado de	92.6	0.2	-3.6	-3.5
Balears, Illes	115.0	2.2	3.8	2.1
Canarias	96.5	0.5	0.3	-1.7
Cantabria	97.4	2.8	-2.7	-2.9
Castilla y León	93.9	-0.1	-3.0	-3.2
Castilla-La Mancha	95.0	0.7	0.0	-0.8
Cataluña	98.6	1.5	-0.7	-1.7
Comunitat Valenciana	93.5	-0.3	-0.6	-1.5
Extremadura	97.0	1.7	-1.2	-2.4
Galicia	94.8	1.0	-2.3	-2.7
Madrid, Comunidad de	94.0	-0.5	-2.2	-2.9
Murcia, Región de	96.2	-0.9	-0.3	-0.6
Navarra, Comunidad Foral de	97.3	2.1	-3.4	-3.4
País Vasco	97.0	0.3	-0.4	-1.2
Rioja, La	95.6	0.4	-2.4	-2.4