

18 October 2012

Services Sector Activity Indicators (SSAI). Base 2005
August 2012. *Provisional data*

The interannual rate of turnover for the market Services Sector stands at 0.8% in August, as compared with –4.8% in July

The monthly variation of turnover for the market Services Sector is –2.9%

Evolution of turnover for the Services Sector

Turnover in the market Services Sector experienced an interannual variation of **0.8%** in August 2012, more than five-and-a-half tenths above that registered in July.

Trade registered an annual rate of 2.2% and an effect of 1.421. In turn, Other Services experienced a variation of –1.8%, with an effect of –0.659 on the general index.

The sectors that presented a positive effect on the general index were:

- **Wholesale trade and intermediaries**, with an annual variation of 3.2% and an effect of 1.127, mainly caused by the increases in almost all activities of this sector. Among them, worth noting *Wholesale of household goods, Wholesale of fuels, metals and others and Wholesale of food, beverages and tobacco*.
- **Retail trade**, with an annual variation of 1.6% and an effect of 0.366.

In turn, the sectors with the greatest negative effect on the general index were:

- **Accommodation**, with an annual rate of **–3.0%** and an effect of **–0.235** on the general index, caused by the negative evolution of *food and beverage services activities*.
- **Administrative and support service activities**, with an annual rate of –3.4% and an effect of –0.203, with drops in almost all activities. Among them highlighting *Travel agencies and tour operator services*.
- **Information and communication**, with an annual variation of –2.4% and an effect of –0.182 on the general index, mainly caused by the decrease in *Telecommunication*.

A more detailed analysis showed the activities that most affected the annual rate of the general index of Services Sector turnover in the month of August.

Activities with the greatest positive effect on the annual rate of the Services Sector Turnover General Index

Activity (Elementary aggregate)	Annual rate (%)	Effect
Wholesale of household goods	3.8	0.321
Wholesale of fuels, metals and others	2.5	0.273
Wholesale of food, beverages and tobacco	2.7	0.263
Wholesale of agricultural raw materials and live animals	11.5	0.196
Wholesale of other machinery, equipment and supplies	8.8	0.190

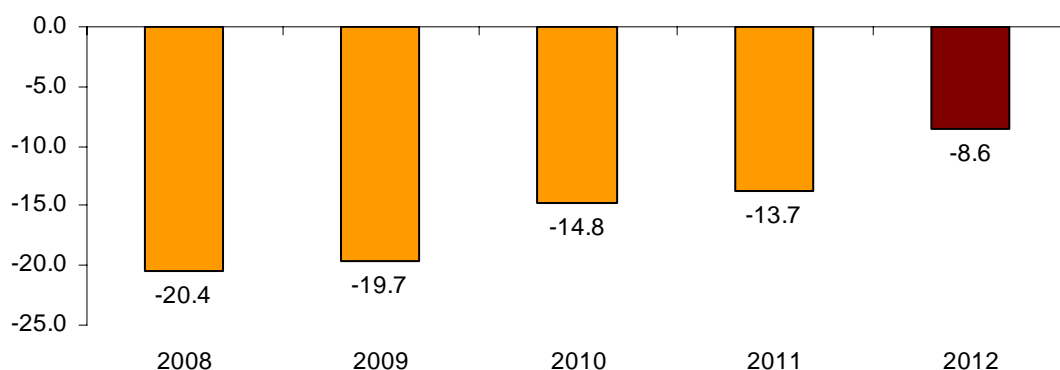
Activities with the greatest negative effect on the annual rate of the Services Sector Turnover General Index

Activity (Elementary aggregate)	Annual rate (%)	Effect
Telecommunications	-7.6	-0.290
Food and beverage service activities	-5.8	-0.252
Architectural and engineering activities; technical testing and analysis	-9.2	-0.168
Sale of motor vehicles motorcycles and spare parts	-3.0	-0.131
Travel agencies and tour operator services	-3.9	-0.121

Monthly rate performance ¹

The variation of the Services Sector Turnover General between August and July was –8.6%. This rate was the highest registered in the last years.

**Monthly rate performance of the Services Sector Turnover
(month-on-month variation for August to July)**



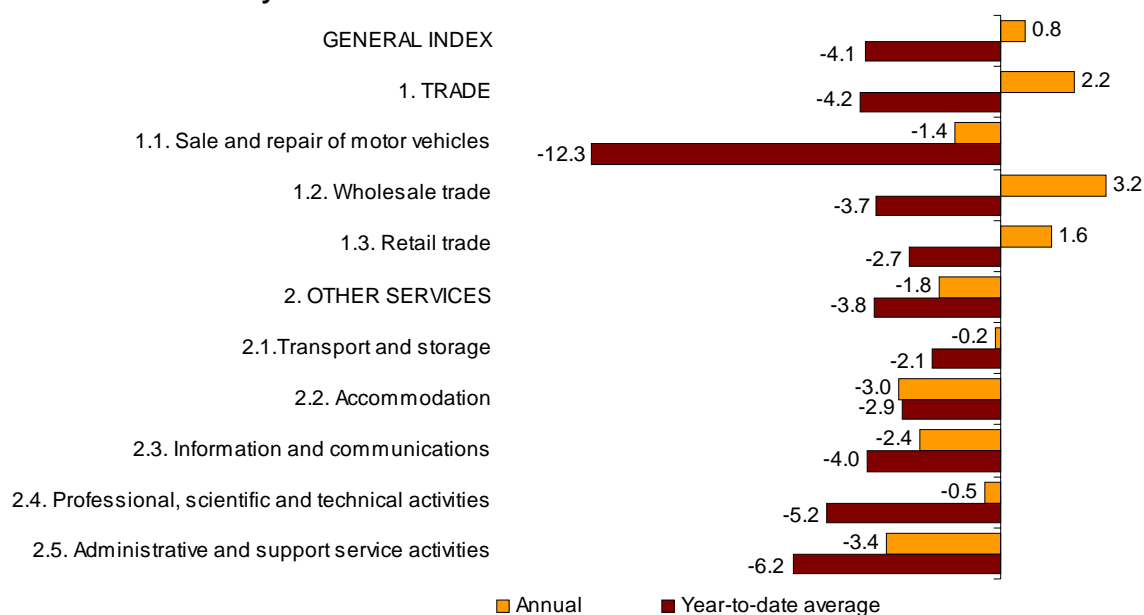
¹ To contribute to the analysis and interpretation of data, this section has been added to the evolution of the of the Services Sector Turnover in the last years. The monthly rates of this type of series may have some degree of seasonal behaviour, therefore it is recommended that it be evaluated in relation to the item of data for the same month in previous years.

Year-to-date average rates

The average rate of the Services Sector Turnover General Index registered a variation of **-4.1%** in the first eight months of 2012, as compared with the same period the previous year. This rate was **-4.2%** in Trade and **-3.8%** for Other Services.

By sectors, the average rate of the Services Sector Turnover experienced a negative variation rate in all sectors.

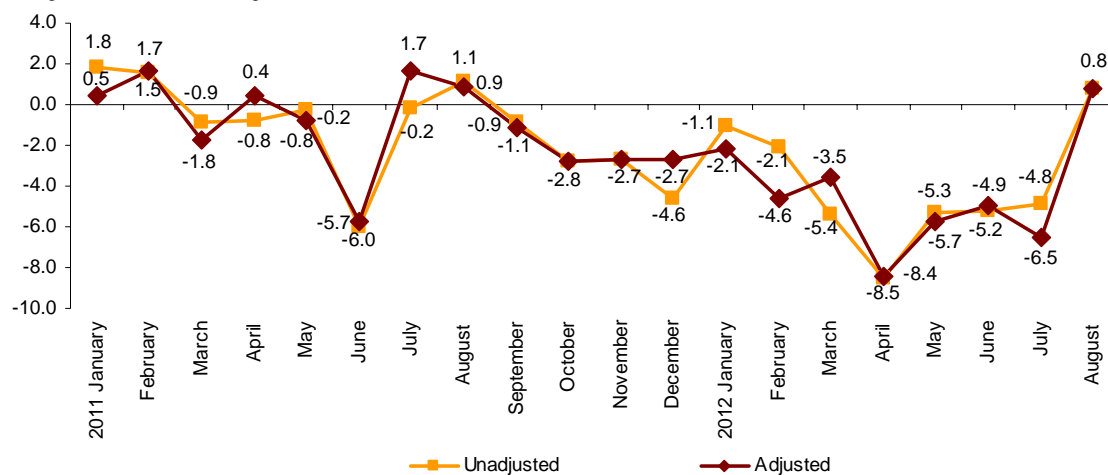
Annual and average turnover rates General index and by sector



Variation rates of the Services Sector Turnover adjusted for the calendar effect

After eliminating the calendar effect, that is, the difference between the number of working days in a given month in different years, the interannual variation of the General Index of Services Sector Turnover stood at **0.8%** in August, more than seven points above that registered in the previous month.

Annual evolution of turnover for the services sector Adjusted and Unadjusted General Index



Evolution of employed personnel

Employment in the Services Sector experienced an interannual variation of **-2.9%** in August, the same that registered in July.

Trade registered a variation of **-2.3%** and an effect of **-0.952**. Other Services registered a variation of **-3.4%** and an effect of **-1.958**.

All sectors presented a negative effect on the general index of employed personnel. Those with the greatest influence were:

- **Administrative and support service activities**, with an annual rate of **-4.2%** and an effect of **-0.578**, motivated by the negative evolution in all activities comprising this sector. Highlighting, among them *Employment activities*.

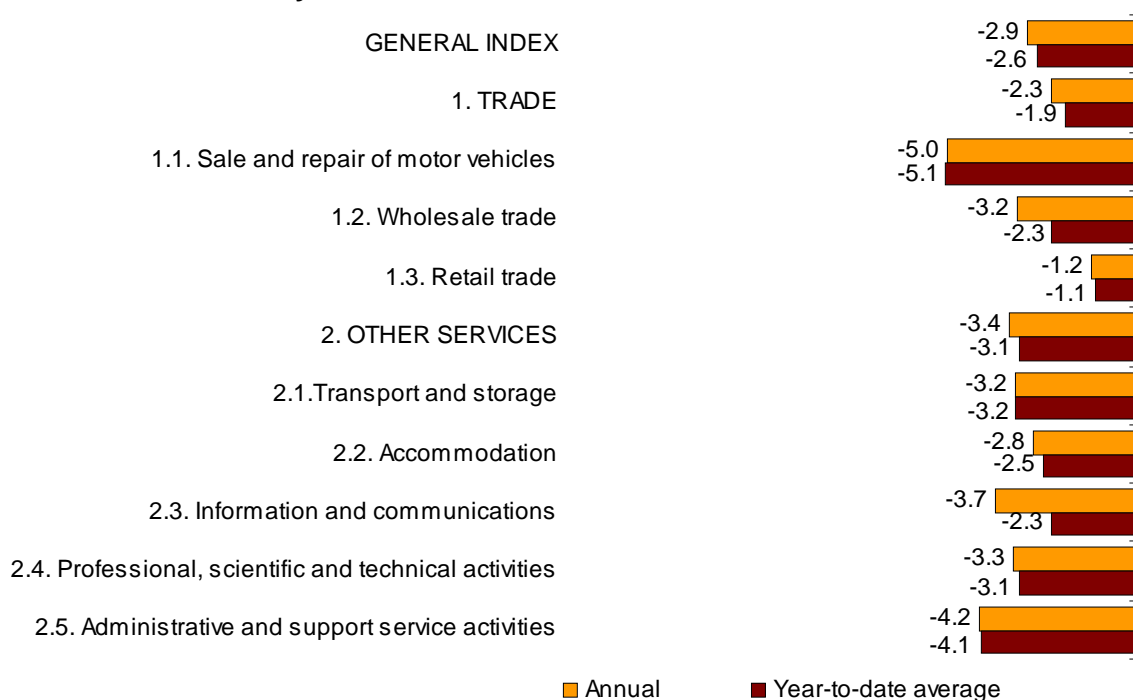
- **Wholesale trade and intermediaries**, with an annual rate of **-3.2%** and an effect of **-0.452** on the general index, caused by the decrease in almost all activities of this sector. Among them, worth noting *Wholesale of fuels, metals and others* and *Wholesale of household goods*.

- **Accommodation**, with variation of **-3.2%** and an effect of **-0.439**, caused by the decrease in the two activities comprising this sector.

- **Transport and storage**, with an annual variation of **-3.2%** and an effect of **-0.391**, due to the general decrease in the activities comprising the sector. Highlighted the negative evolution of the employment in *Freight transport by road and removal services*.

In the first eight months of the year, the average rate of the General Index of employed personnel stood at **-2.6%**. This rate was **-1.9%** in Trade and it was **-3.1%** in Other Services.

Annual and average rates of employed personnel General index and by sector



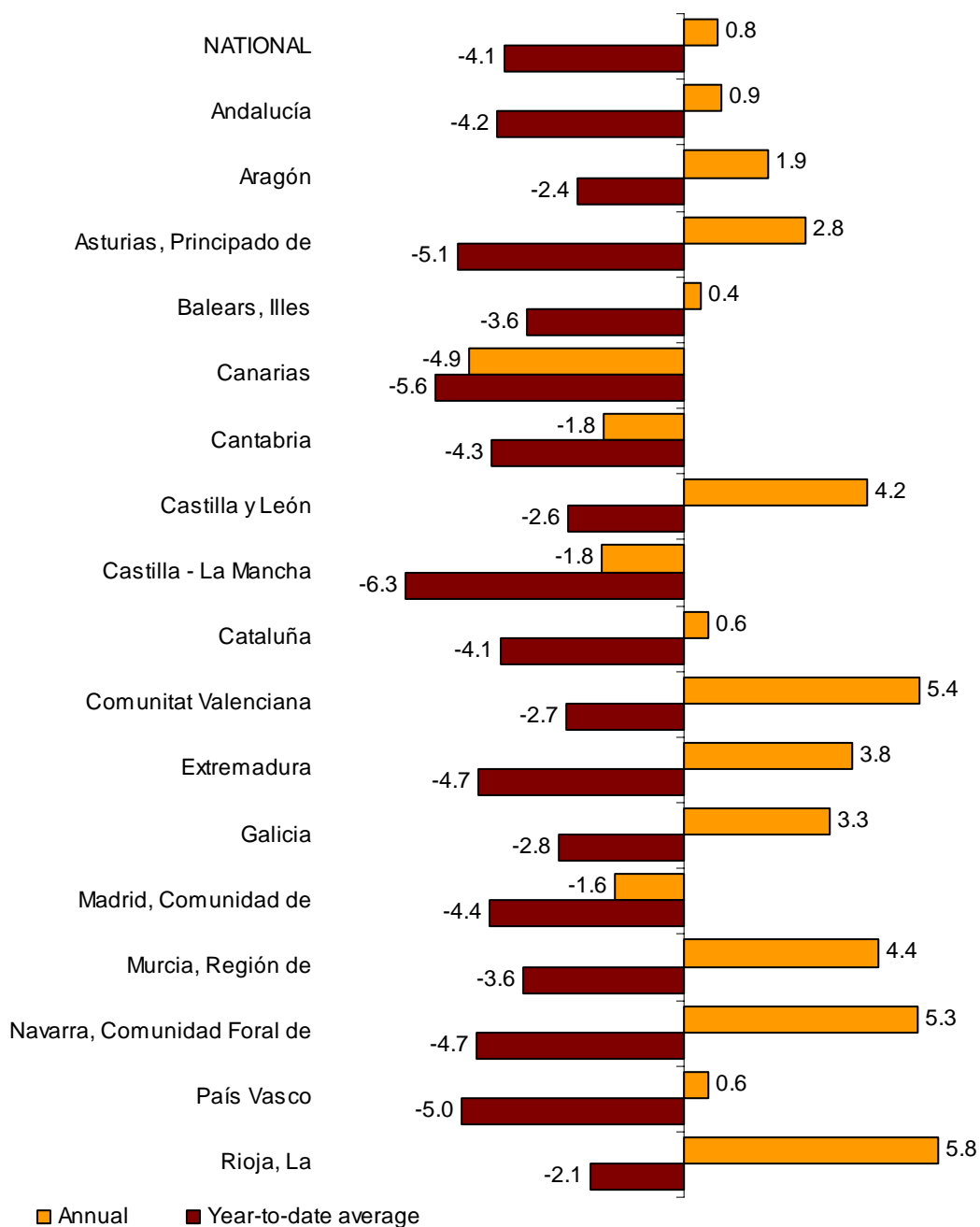
Autonomous Communities. Turnover variation rates

In August, thirteen Autonomous Communities presented a positive evolution of Turnover in the Service Sector.

The greatest increases were registered in La Rioja (5.8%), Comunitat Valenciana (5.4%) and Comunidad Foral de Navarra (5.3%). In turn, the Autonomous Communities that registered decreases were: Canarias (−4.9%), Cantabria and Castilla la Mancha (both with −1.8%) and Comunidad de Madrid (−1.6%).

Annual and average turnover rates

General index by Autonomous Community

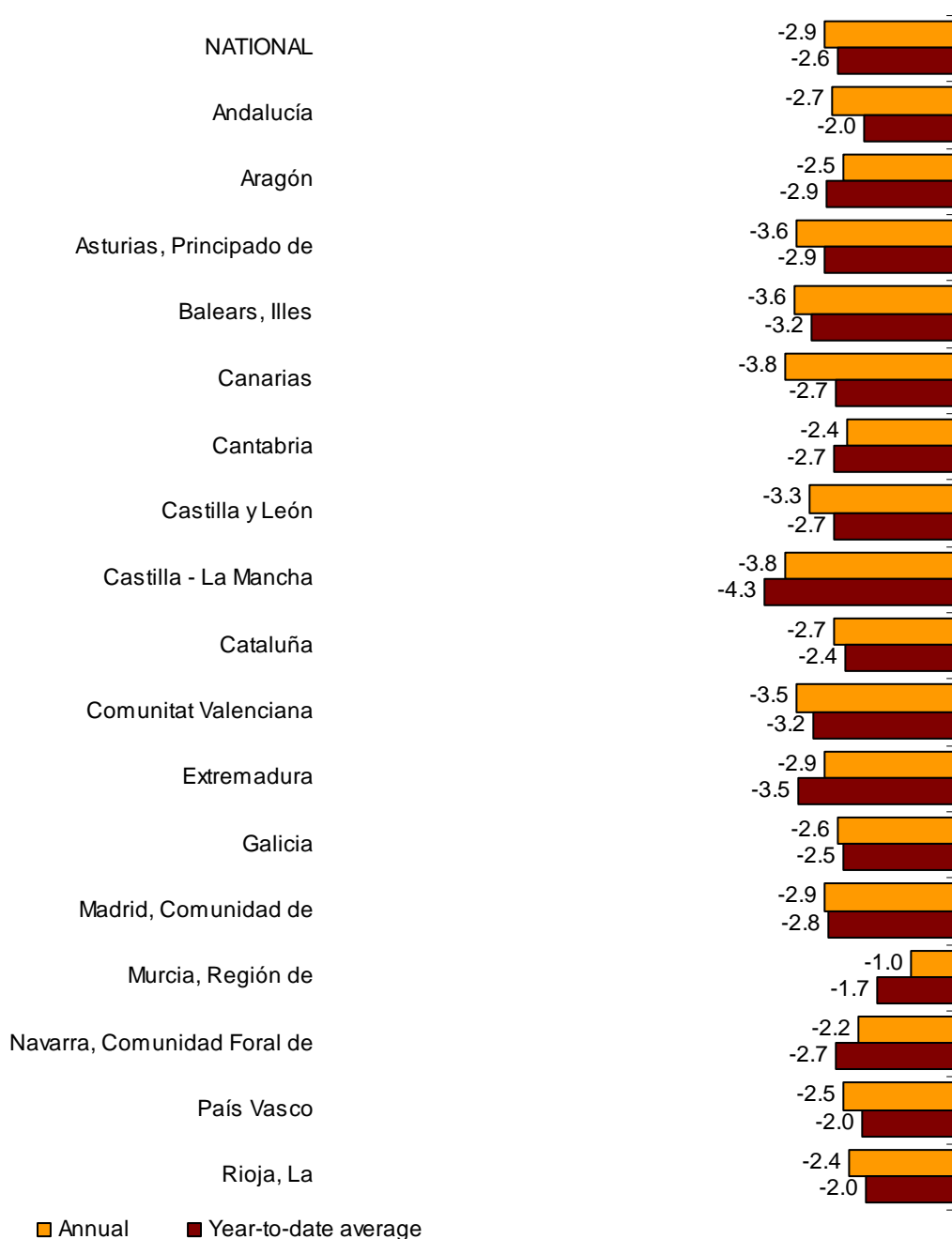


Autonomous Communities. Variation rates of employed personnel

All Autonomous Communities registered negative annual rates in employment in August.

Those presenting the greatest decreases were Canarias and Castilla La Mancha, both with -3.8%. In turn, the smallest decreases were registered in Región de Murcia (-1.0%) and Comunidad Foral de Navarra (-2.2%).

Annual and average rates of employed personnel General index by Autonomous Community



Services Sector Activity Indicators. Base 2005

August 2012

Provisional data

1. Monthly turnover indices by sector

	Index	% variation		Contribution
		Annual	Year-to-date average	Annual
GENERAL INDEX	87.0	0.8	-4.1	
1. TRADE	83.0	2.2	-4.2	1.421
1.1. SALE AND REPAIR OF VEHICLES	46.2	-1.4	-12.3	-0.071
- Sale of motor vehicles	41.5	-3.0	-13.7	-0.131
- Maintenance and repair of motor vehicles	87.5	6.4	-4.9	0.060
1.2. WHOLESALE TRADE	84.8	3.2	-3.7	1.127
- Wholesale on a fee or contract basis	75.6	-2.4	-0.9	-0.010
- Wholesale of agricultural raw materials and live animals	99.4	11.5	0.6	0.196
- Wholesale of food, beverages and tobacco	98.2	2.7	-2.1	0.263
- Wholesale of household goods	89.4	3.8	-2.1	0.321
- Wholesale of information and communication equipment	50.0	-7.0	-14.6	-0.110
- Wholesale of other machinery, equipment and supplies	59.6	8.8	-4.2	0.190
- Wholesale of fuels, metals and others	84.3	2.5	-5.2	0.273
- Non-specialised wholesale trade	82.2	2.8	-1.7	0.003
1.3. RETAIL TRADE	96.5	1.6	-2.7	0.366
2. OTHER SERVICES	95.5	-1.8	-3.8	-0.659
2.1. TRANSPORTATION AND STORAGE SERVICES	99.2	-0.2	-2.1	-0.015
Land transport	82.8	-0.5	-3.3	-0.019
- Rail transport	106.1	-9.6	-8.7	-0.023
- Taxi operation	90.2	0.4	-2.8	0.001
- Other passenger land transport	99.8	-2.2	-0.7	-0.013
- Freight transport by road and removal services	78.5	0.5	-3.5	0.016
Water transport	138.8	2.6	-0.1	0.007
Air transport	125.8	-0.3	-1.0	-0.004
Warehousing and support activities for transportation	116.0	0.2	-0.4	0.007
Post and courier activities	77.4	-1.1	-6.1	-0.005
2.2. ACCOMMODATION AND FOOD SERVICES ACTIVITIES	120.7	-3.0	-2.9	-0.235
Accommodation	189.8	0.5	0.6	0.017
Food and beverage service activities	92.4	-5.8	-4.7	-0.252
2.3. INFORMATION AND COMMUNICATION	85.6	-2.4	-4.0	-0.182
Publishing activities	64.2	-4.1	-7.5	-0.031
Motion picture, television programme production and music publishing activities	65.4	-12.0	-6.0	-0.048
Programming and broadcasting activities	58.7	4.0	-6.3	0.018
Telecommunications	84.6	-7.6	-7.3	-0.290
Computer programming, consultancy and related activities	117.7	8.5	3.7	0.164
Information service activities	110.9	2.7	0.7	0.004
2.4. PROFESSIONAL, SCIENTIFIC AND TECHNICAL ACTIVITIES	67.6	-0.5	-5.2	-0.023
Legal, accounting and management consulting activities	79.0	10.4	-2.1	0.187
Architectural and engineering activities; technical testing and analysis	69.1	-9.2	-5.2	-0.168
Advertising and market research	52.8	-3.5	-9.6	-0.038
Other professional scientific and technical activities	60.0	-1.8	-5.8	-0.004
2.5. ADMINISTRATIVE AND SUPPORT SERVICE ACTIVITIES	113.4	-3.4	-6.2	-0.203
Employment activities	80.4	-9.3	-9.6	-0.041
Travel agencies and tour operator services	155.1	-3.9	-7.2	-0.121
Security and investigation activities	109.5	-3.0	-2.8	-0.014
Cleaning activities	116.9	-4.5	-3.1	-0.041
Office administrative and other business support activities	72.1	1.2	-7.0	0.014

2. National turnover indices, adjusted for the calendar effect

	Original index	% variation		Adjusted index	% variation	
		Annual	Year-to-date average		Annual	Year-to-date average
GENERAL INDEX	87.0	0.8	-4.1	86.2	0.8	-4.5
1. Trade	83.0	2.2	-4.2	81.9	2.2	-4.7
1.1. Sale and repair of vehicles	46.2	-1.4	-12.3	45.5	-1.4	-13.2
1.2. Wholesale trade	84.8	3.2	-3.7	83.5	3.2	-4.2
1.3. Retail trade	96.5	1.6	-2.7	97.0	1.6	-3.2
2. Other Services	95.5	-1.8	-3.8	94.9	-1.8	-4.1
2.1. Transportation and storage	99.2	-0.2	-2.1	98.3	-0.2	-2.5
2.2. Accommodation and food service activities	120.7	-3.0	-2.9	121.3	-3.0	-3.1
2.3. Information and communication	85.6	-2.4	-4.0	85.0	-2.4	-4.1
2.4. Professional, scientific and technical activities	67.6	-0.5	-5.2	67.0	-0.5	-5.3
2.5. Administrative and support service activities	113.4	-3.4	-6.2	113.1	-3.4	-6.6

3. Interannual rates. General Index and by sector

Period	General Index		Trade		Sale and repair of vehicles		Wholesale trade	
	Original	Adjusted ¹	Original	Adjusted ¹	Original	Adjusted ¹	Original	Adjusted ¹
2011 August	1.1	0.9	0.5	0.2	5.6	5.1	0.2	-0.2
September	-0.9	-1.1	-2.6	-2.9	-2.9	-3.6	-3.2	-3.6
October	-2.8	-2.8	-4.3	-4.2	-1.1	-1.2	-5.4	-5.3
November	-2.7	-2.7	-3.7	-3.7	-3.0	-3.0	-3.9	-3.9
December	-4.6	-2.7	-5.5	-3.1	-6.6	-8.1	-6.4	-3.5
2012 January	-1.1	-2.1	-1.2	-2.5	-6.1	-8.6	0.4	-1.3
February	-2.1	-4.6	-2.5	-5.2	-8.4	-12.3	-2.0	-4.5
March	-5.4	-3.5	-5.2	-3.0	-12.1	-11.4	-6.0	-3.2
April*	-8.5	-8.4	-9.9	-9.8	-19.6	-17.0	-8.8	-8.7
May*	-5.3	-5.7	-5.1	-5.6	-15.8	-16.6	-5.2	-5.8
June*	-5.2	-4.9	-5.5	-5.1	-17.8	-19.7	-5.2	-4.7
July*	-4.8	-6.5	-5.3	-7.4	-13.4	-14.5	-4.6	-7.2
August	0.8	0.8	2.2	2.2	-1.4	-1.4	3.2	3.2

Period	Retail trade		Other Services		Transportation and storage services		Accommodation and food services activities	
	Original	Adjusted ¹	Original	Adjusted ¹	Original	Adjusted ¹	Original	Adjusted ¹
2011 August	-0.1	-0.4	2.2	2.0	3.1	2.9	3.1	3.2
September	-1.3	-1.6	2.3	2.2	4.5	4.3	3.7	3.7
October	-3.3	-3.4	0.0	0.1	0.1	0.2	0.3	0.3
November	-3.7	-3.7	-0.6	-0.6	-0.7	-0.7	-0.4	-0.4
December	-3.8	-3.0	-2.8	-1.7	-0.8	1.2	-1.4	-2.1
2012 January	-2.4	-3.6	-0.9	-1.5	0.8	-0.3	-1.3	-0.9
February	-1.5	-4.5	-1.3	-3.4	0.4	-2.4	-1.1	-3.8
March	-1.6	-1.4	-5.6	-4.5	-4.4	-2.5	-1.7	-2.3
April*	-9.1	-7.6	-5.7	-5.7	-4.7	-4.6	-5.0	-5.0
May*	-1.7	-2.3	-5.8	-6.0	-3.8	-4.2	-3.6	-3.4
June*	-2.4	-3.2	-4.6	-4.5	-3.0	-2.6	-2.8	-2.9
July*	-4.3	-4.7	-4.0	-5.0	-0.9	-2.6	-4.1	-3.5
August	1.6	1.6	-1.8	-1.8	-0.2	-0.2	-3.0	-3.0

Period	Information and communication		Professional, scientific and technical activities		Administrative and support service activities	
	Original	Adjusted ¹	Original	Adjusted ¹	Original	Adjusted ¹
2011 August	0.5	0.4	2.6	2.6	1.0	0.9
September	-2.3	-2.4	3.0	2.8	3.4	3.3
October	-0.3	-0.3	1.0	1.0	-1.3	-1.2
November	-0.7	-0.7	1.4	1.4	-3.5	-3.5
December	-5.7	-4.5	-2.6	-1.6	-3.1	-1.9
2012 January	-0.8	-1.7	-1.9	-2.5	-2.8	-3.5
February	-1.4	-1.7	-2.4	-2.6	-3.3	-6.3
March	-5.8	-4.2	-10.8	-9.8	-4.5	-3.4
April*	-2.8	-2.8	-7.7	-7.7	-10.7	-10.7
May*	-6.2	-6.4	-8.6	-8.8	-7.6	-7.8
June*	-6.1	-6.1	-6.5	-6.4	-5.1	-5.0
July*	-5.4	-6.9	-1.2	-2.2	-10.4	-11.4
August	-2.4	-2.4	-0.5	-0.5	-3.4	-3.4

¹ Index rates adjusted for calendar effects

* Revised data

4. National employed personnel indices by branch of activity

	Index	% variation		Contribution Annual
		Annual	Year-to-date average	
GENERAL INDEX	93.6	-2.9	-2.6	
1. TRADE	93.2	-2.3	-1.9	-0.952
1.1. SALE AND REPAIR OF VEHICLES	84.0	-5.0	-5.1	-0.205
- Sale of motor vehicles	79.3	-6.0	-6.2	-0.128
- Maintenance and repair of motor vehicles	90.0	-4.0	-3.8	-0.076
1.2. WHOLESALE TRADE	88.8	-3.2	-2.3	-0.452
- Wholesale on a fee or contract basis	88.5	-0.1	-0.6	-0.001
- Wholesale of agricultural raw materials and live animals	100.9	-5.9	-3.1	-0.031
- Wholesale of food, beverages and tobacco	89.6	0.7	1.2	0.027
- Wholesale of household goods	89.1	-4.3	-4.2	-0.140
- Wholesale of information and communication equipment	96.3	-1.4	-0.8	-0.011
- Wholesale of other machinery, equipment and supplies	85.8	-5.2	-4.0	-0.085
- Wholesale of fuels, metals and others	85.2	-7.2	-5.5	-0.210
- Non-specialised wholesale trade	100.0	-0.9	-0.3	-0.001
1.3. RETAIL TRADE	97.7	-1.2	-1.1	-0.295
2. OTHER SERVICES	93.9	-3.4	-3.1	-1.958
2.1. TRANSPORTATION AND STORAGE SERVICES	93.7	-3.2	-3.2	-0.391
Land transport	92.9	-2.6	-2.9	-0.195
- Rail transport	97.7	-0.5	0.1	-0.002
- Taxi operation	106.1	-0.7	-0.5	-0.007
- Other passenger land transport	107.6	-2.1	-1.3	-0.029
- Freight transport by road and removal services	86.6	-3.3	-4.2	-0.157
Water transport	88.0	-10.0	-5.7	-0.009
Air transport	86.9	-4.2	-2.7	-0.020
Warehousing and support activities for transportation	100.7	-3.2	-3.0	-0.087
Post and courier activities	88.3	-6.1	-5.5	-0.080
2.2. ACCOMMODATION AND FOOD SERVICES ACTIVITIES	94.8	-2.8	-2.5	-0.439
Accommodation	108.1	-4.2	-3.0	-0.170
Food and beverage service activities	90.9	-2.3	-2.4	-0.269
2.3. INFORMATION AND COMMUNICATION	97.0	-3.7	-2.3	-0.185
Publishing activities	79.4	-6.8	-6.1	-0.047
Motion picture, television programme production and music publishing activities	74.9	-11.7	-9.0	-0.047
Programming and broadcasting activities	94.8	-4.4	-3.5	-0.021
Telecommunications	83.4	-7.5	-5.6	-0.057
Computer programming, consultancy and related activities	113.9	-0.3	1.4	-0.006
Information service activities	107.3	-2.4	-1.4	-0.007
2.4. PROFESSIONAL, SCIENTIFIC AND TECHNICAL ACTIVITIES	95.3	-3.3	-3.1	-0.366
Legal, accounting and management consulting activities	103.7	-2.0	-1.8	-0.109
Architectural and engineering activities; technical testing and analysis	92.1	-5.6	-5.0	-0.197
Advertising and market research	78.3	-2.9	-3.6	-0.039
Other professional scientific and technical activities	92.3	-2.5	-2.9	-0.022
2.5. ADMINISTRATIVE AND SUPPORT SERVICE ACTIVITIES	90.8	-4.2	-4.1	-0.578
Employment activities	68.1	-7.8	-7.7	-0.206
Travel agencies and tour operator services	85.4	-6.0	-4.2	-0.039
Security and investigation activities	109.8	-4.3	-3.8	-0.072
Cleaning activities	102.1	-2.7	-2.6	-0.152
Office administrative and other business support activities	89.9	-3.4	-3.9	-0.109

5. General turnover index by Autonomous Community

	Index	% variation	
		Annual	Year-to-date average
NATIONAL INDEX	87.0	0.8	-4.1
Andalucía	79.2	0.9	-4.2
Aragón	96.9	1.9	-2.4
Asturias, Principado de	99.2	2.8	-5.1
Balears, Illes	148.4	0.4	-3.6
Canarias	88.5	-4.9	-5.6
Cantabria	103.7	-1.8	-4.3
Castilla y León	99.4	4.2	-2.6
Castilla - La Mancha	81.5	-1.8	-6.3
Cataluña	84.8	0.6	-4.1
Comunitat Valenciana	86.3	5.4	-2.7
Extremadura	98.7	3.8	-4.7
Galicia	109.5	3.3	-2.8
Madrid, Comunidad de	79.4	-1.6	-4.4
Murcia, Región de	87.4	4.4	-3.6
Navarra, Comunidad Foral de	97.9	5.3	-4.7
País Vasco	82.0	0.6	-5.0
Rioja, La	103.5	5.8	-2.1

6. General employed personnel index by Autonomous Community

	Index	% variation	
		Annual	Year-to-date average
NATIONAL INDEX	93.6	-2.9	-2.6
Andalucía	92.7	-2.7	-2.0
Aragón	94.8	-2.5	-2.9
Asturias, Principado de	99.1	-3.6	-2.9
Balears, Illes	112.5	-3.6	-3.2
Canarias	87.1	-3.8	-2.7
Cantabria	102.3	-2.4	-2.7
Castilla y León	98.6	-3.3	-2.7
Castilla - La Mancha	89.3	-3.8	-4.3
Cataluña	94.1	-2.7	-2.4
Comunitat Valenciana	85.4	-3.5	-3.2
Extremadura	97.4	-2.9	-3.5
Galicia	99.6	-2.6	-2.5
Madrid, Comunidad de	92.5	-2.9	-2.8
Murcia, Región de	92.5	-1.0	-1.7
Navarra, Comunidad Foral de	99.1	-2.2	-2.7
País Vasco	96.4	-2.5	-2.0
Rioja, La	98.6	-2.4	-2.0