

18 October 2013

Services Sector Activity Indicators (SSAI). Base 2010
August 2013. *Provisional data*

The annual rate of turnover for the market Services Sector stands at –3.5% in the seasonally and calendar adjusted series and at –4.5% in the original series

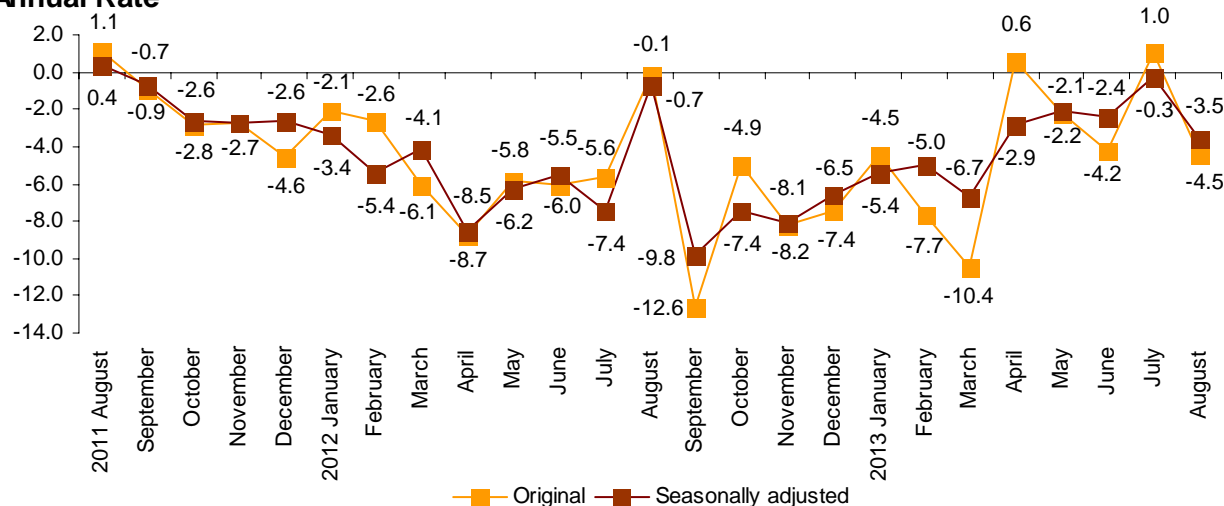
The monthly variation is 3.5% after adjusting for seasonal and calendar effects

The turnover for the market Services Sector registered a variation of –4.5% in August, as compared with the same month of the previous year. This rate was 5.5 points lower than that registered in July.

After adjusting for seasonal and calendar effects, the annual rate was –3.5%, three points and two tenths lower than that registered in July.

General index of the turnover for the Market Services Sector

Annual Rate



*Seasonally adjusted: adjusted for season and calendar effects.

Annual evolution of turnover for the Services Sector

Trade decreased 5.1% while Other Services decreased 3.4%.

By sectors, *Sale and repair of vehicles and motorcycles* (–15.0%) registered the greatest decrease. In turn, *Accommodation* was the only sector that registered a positive annual rate (2.6%).

After adjusting for seasonal and calendar effects, all sectors presented negative rates as compared with August of the previous year, except *Accommodation* (1.8%).

Annual rates of the national Turnover index by sector

	Original index	Seasonally adjusted index
	Annual rate (%)	Annual rate (%)
GENERAL INDEX	-4.5	-3.5
1. Trade	-5.1	-3.8
1.1. Sale and repair of vehicles and motorcycles	-15.0	-15.7
1.2. Wholesale trade	-4.9	-3.3
1.3. Retail trade	-3.0	-3.3
2. Other services	-3.4	-3.1
2.1. Transport and storage	-2.2	-0.8
2.2. Accommodation	2.6	1.8
2.3. Information and communications	-8.6	-8.0
2.4. Professional, scientific and technical activities	-5.3	-5.8
2.5. Administrative and support service activities	-5.1	-5.3

A more detailed analysis showed the activities that registered the highest annual rates and those that registered the greatest decreases in August.

Activities with the greatest annual rates of the Services Sector turnover

Activity (Elementary aggregate)	Gross Index	Annual rate (%)
Accommodation	184.9	4.9
Rail transport	86.2	4.0
Air transport	126.7	3.9
Employment activities	93.0	3.0

Activities with the lowest annual rates of the Services Sector turnover

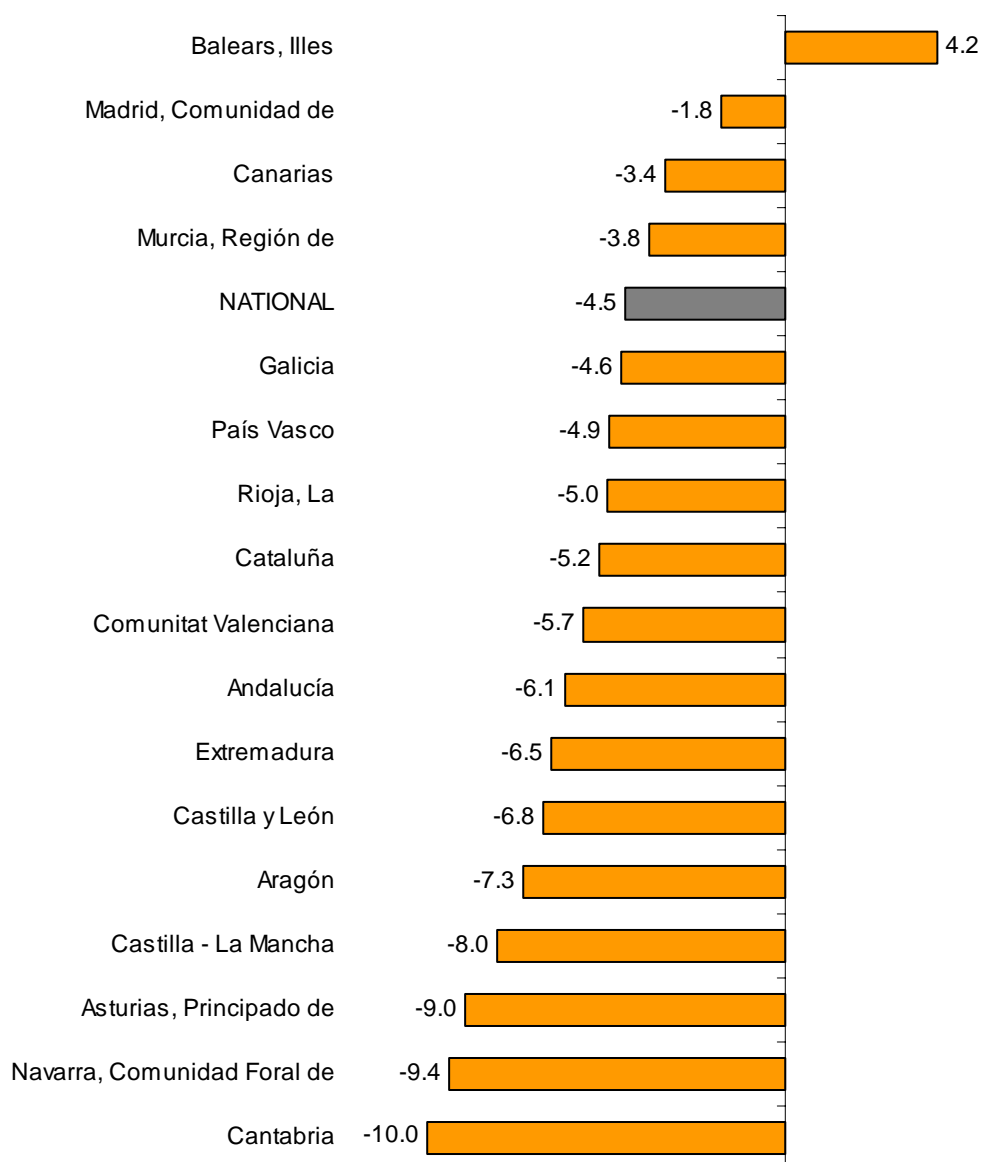
Activity (Elementary aggregate)	Gross Index	Annual rate (%)
Publishing activities	63.1	-15.3
Sale of motor vehicles	55.9	-15.1
Other professional scientific and technical activities	62.9	-14.5
Maintenance and repair of motor vehicles	75.9	-14.4

Results by Autonomous Community. Annual turnover variation rates

In August, all Autonomous Communities registered negative annual rates of turnover in the *Market Service Sector*, except Illes Balears (4.2%).

Cantabria (–10.0%), Comunidad Foral de Navarra (–9.4%) and Principado de Asturias (–9.0%) registered the greatest decreases.

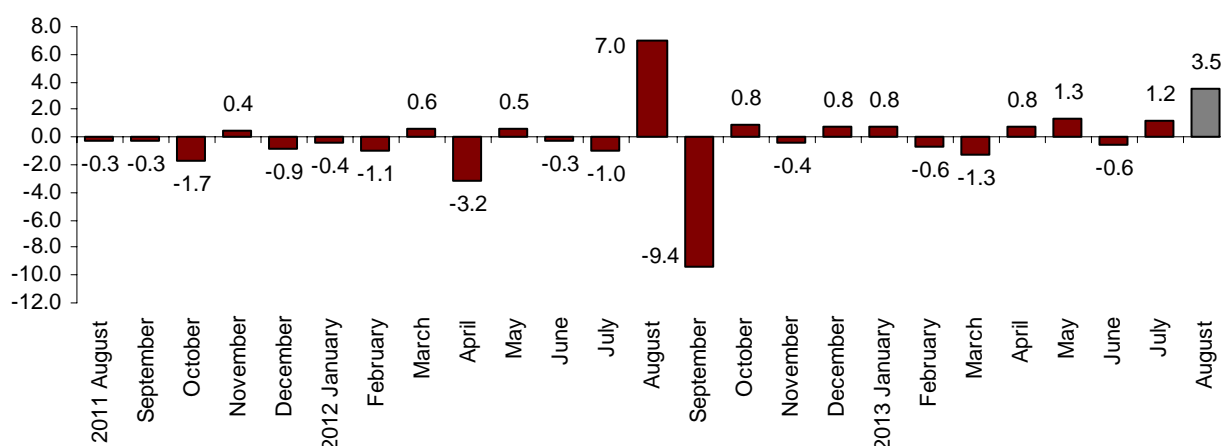
General Index by Autonomous Community Turnover Annual Rate



Monthly evolution of the Services Sector Turnover adjusted for seasonal and calendar effects

After eliminating the seasonal and calendar effect, the monthly variation of the General Index of *market Services Sector* Turnover between July and August stood at 3.5%. This rate was 2.3 points higher than that registered in July.

General index of the turnover for the Market Services Sector Adjusted for seasonal and calendar effects. Monthly Rate



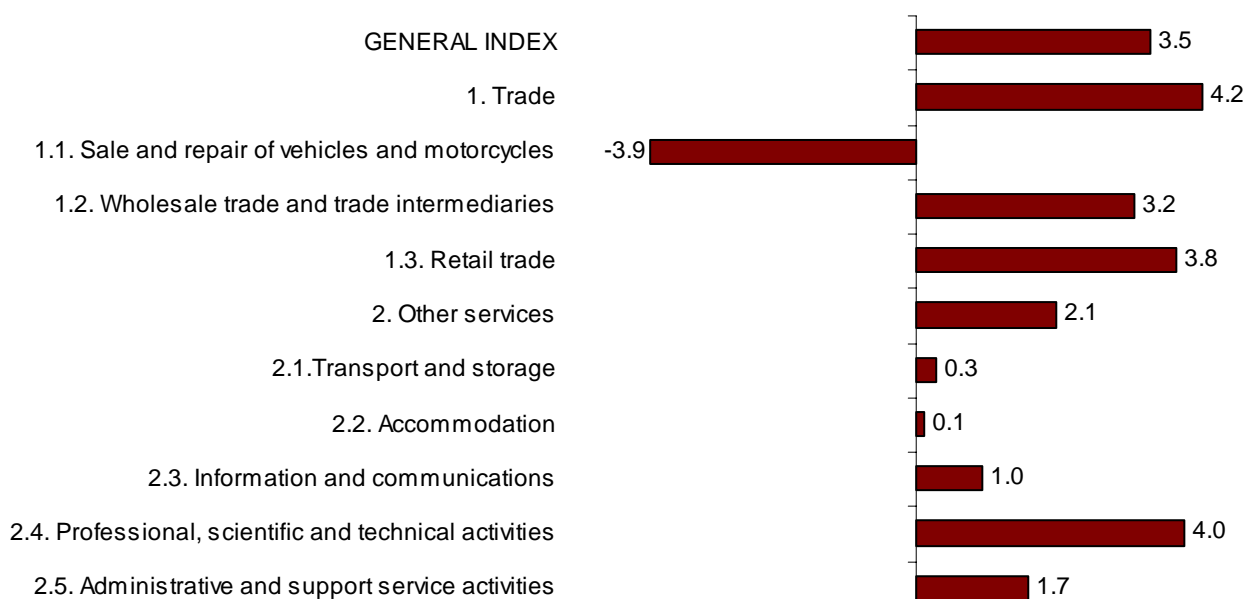
Monthly evolution of the Turnover by sectors adjusted for seasonal and calendar effects

After eliminating the seasonal and calendar effect, the monthly variations of *Trade* (4.2%) and *Other Services* (2.1%) were positive.

By sector, all of them registered positive rates, except *Sale and repair of vehicles and motorcycles* (-3.9%).

General and by sectors turnover Index

Adjusted for seasonal and calendar effects. Monthly rate



Evolution of occupation

Employment in the *market Services Sector* experienced a variation of –1.1% in August, as compared with the same month of previous year. This rate is one tenth higher than that registered in July.

Trade and *Other Services* registered an annual variation of –1.9% and –0.5%, respectively.

All sectors registered negative annual rates, except *Accommodation* (0.9%) and *Administrative and support service activities* (0.1%). *Sale and repair of vehicles and motorcycles* registered the greatest decrease (–3.7%).

National Indices of employed personnel by sector

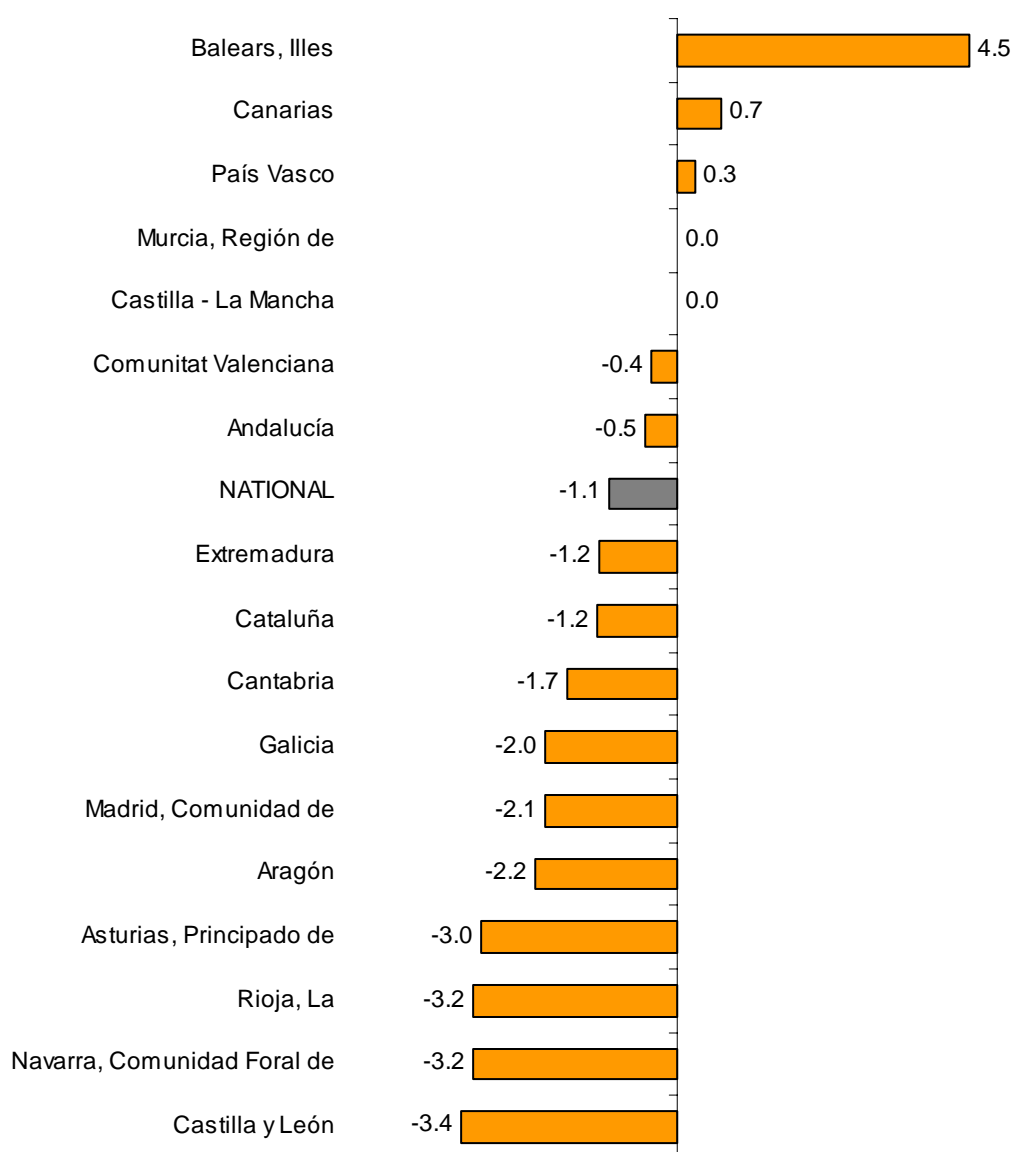
	Index	Monthly rate (%)	Annual rate (%)
GENERAL INDEX	95.5	-0.4	-1.1
1. Trade	94.5	-0.5	-1.9
1.1. Sale and repair of vehicles and motorcycles	88.1	-0.2	-3.7
1.2. Wholesale trade	92.8	-1.6	-1.3
1.3. Retail trade	96.8	0.1	-1.9
2. Other services	96.2	-0.3	-0.5
2.1. Transport and storage	94.4	-0.4	-2.1
2.2. Accommodation	100.8	-0.2	0.9
2.3. Information and communications	92.8	-0.5	-2.9
2.4. Professional, scientific and technical activities	93.9	-0.7	-0.4
2.5. Administrative and support service activities	95.1	0.1	0.1

Results by Autonomous Community. Variation rates of occupation

The Autonomous Communities that registered positive rates in employment, as compared with August of 2012, were Illes Balears (4.5%), Canarias (0.7%) and País Vasco (0.3%). Castilla-La Mancha and Región de Murcia remained the same (0.0%).

The greatest decreases in occupation were registered in Castilla y León (–3.4%), Comunidad Foral de Navarra and La Rioja (both at –3.2%) and Principado de Asturias (–3.0%).

General Index by Autonomous Community Annual rate of employed personnel



Services Sector Activity Indicators. Base 2010

August 2013

Provisional data

1. Monthly turnover indices by sector

	Index	% variation		
		Monthly	Annual	Year-to-date average
GENERAL INDEX	86.2	-13.7	-4.5	-4.0
1. TRADE	83.3	-14.7	-5.1	-3.8
1.1. SALE AND REPAIR OF VEHICLES	58.8	-30.7	-15.0	-10.7
- Sale of motor vehicles	55.9	-33.2	-15.1	-11.1
- Maintenance and repair of motor vehicles	75.9	-18.3	-14.4	-8.7
1.2. WHOLESALE TRADE AND COMMISSION TRADE	82.8	-15.6	-4.9	-2.6
- Wholesale on a fee or contract basis	87.6	-9.2	-1.6	-0.7
- Wholesale of agricultural raw materials and live animals	93.2	-5.7	-7.6	-0.6
- Wholesale of food, beverages and tobacco	90.7	-6.2	-2.8	-0.1
- Wholesale of household goods	81.8	-19.3	-7.0	-2.5
- Wholesale of information and communication equipment	53.2	-31.7	-8.3	-3.6
- Wholesale of other machinery, equipment and supplies	64.4	-27.6	-14.0	-9.9
- Other specialised wholesale trade	87.8	-16.9	-2.2	-3.3
- Non-specialised wholesale trade	72.9	-26.4	-5.2	-4.9
1.3. RETAIL TRADE	91.6	-8.9	-3.0	-4.0
2. OTHER SERVICES	91.3	-11.9	-3.4	-4.2
2.1. TRANSPORTATION AND STORAGE SERVICES	94.7	-12.7	-2.2	-1.5
Land transport	82.3	-17.0	-4.9	-2.9
- Rail transport	86.2	-14.8	4.0	0.9
- Taxi operation	92.9	-15.4	0.6	-2.5
- Other passenger land transport	79.8	-10.4	-5.4	-7.1
- Freight transport by road and removal services	81.8	-18.6	-6.0	-2.3
Water transport	97.3	7.8	-8.1	-12.7
Air transport	126.7	-0.5	3.9	-2.6
Warehousing and support activities for transportation	106.1	-11.2	-1.1	1.0
Post and courier activities	69.5	-22.3	-0.6	-4.1
2.2. ACCOMMODATION AND FOOD SERVICES ACTIVITIES	122.6	4.3	2.6	-1.5
Accommodation	184.9	13.8	4.9	1.6
Food and beverage service activities	98.6	-1.9	0.9	-2.9
2.3. INFORMATION AND COMMUNICATION	77.2	-12.8	-8.6	-6.8
Publishing activities	63.1	-36.5	-15.3	-6.8
Motion picture, television programme production and music publishing activities	59.8	-12.7	-11.9	-14.9
Programming and broadcasting activities	67.6	-8.9	-0.5	-2.4
Telecommunications	77.0	-4.6	-10.5	-8.9
Computer programming, consultancy and related activities	89.6	-15.5	-4.0	-2.8
Information service activities	78.6	-20.1	-11.4	-8.0
2.4. PROFESSIONAL, SCIENTIFIC AND TECHNICAL ACTIVITIES	68.0	-31.3	-5.3	-6.5
Legal, accounting and management consulting activities	73.4	-36.0	-2.1	-3.7
Architectural and engineering activities; technical testing and analysis	72.1	-21.8	-9.6	-7.8
Advertising and market research	55.4	-34.6	0.3	-8.7
Other professional scientific and technical activities	62.9	-37.0	-14.5	-8.6
2.5. ADMINISTRATIVE AND SUPPORT SERVICE ACTIVITIES	112.2	-2.8	-5.1	-5.6
Employment activities	93.0	-16.2	3.0	-0.1
Travel agencies and tour operator services	150.5	3.1	-7.0	-6.5
Security and investigation activities	92.9	-4.2	-2.4	-2.1
Cleaning activities	92.6	-2.7	-0.8	-3.1
Office administrative and other business support activities	70.5	-14.8	-7.8	-10.2

2. National turnover indices, adjusted for the calendar effect

	Adjusted index	% variation		
		Monthly	Annual	Year-to-date average
GENERAL INDEX	86.9	-11.9	-3.1	-3.5
1. Trade	84.1	-12.6	-3.4	-3.3
1.1. Sale and repair of vehicles	58.3	-30.0	-15.0	-10.0
1.2. Wholesale trade	83.8	-12.9	-2.8	-2.1
1.3. Retail trade	91.1	-8.7	-3.0	-3.8
2. Other Services	91.7	-10.9	-2.6	-3.9
2.1. Transportation and storage	95.5	-10.9	-0.8	-1.1
2.2. Accommodation and food service activities	122.2	3.6	2.1	-1.3
2.3. Information and communication	77.6	-11.6	-7.7	-6.5
2.4. Professional, scientific and technical activities	68.3	-30.5	-4.6	-6.4
2.5. Administrative and support service activities	112.6	-1.8	-4.5	-5.2

3. National turnover indices, adjusted for seasonal effects and by calendar

	index	% variation		
		Monthly	Annual	Year-to-date average
GENERAL INDEX	94.9	3.5	-3.5	-3.6
1. Trade	95.1	4.2	-3.8	-3.4
1.1. Sale and repair of vehicles	71.7	-3.9	-15.7	-10.6
1.2. Wholesale trade	96.7	3.2	-3.3	-2.1
1.3. Retail trade	95.9	3.8	-3.3	-3.8
2. Other Services	94.2	2.1	-3.1	-3.9
2.1. Transportation and storage	99.1	0.3	-0.8	-1.2
2.2. Accommodation and food service activities	95.5	0.1	1.8	-1.8
2.3. Information and communication	88.1	1.0	-8.0	-6.5
2.4. Professional, scientific and technical activities	94.0	4.0	-5.8	-6.5
2.5. Administrative and support service activities	92.2	1.7	-5.3	-5.4

4. National turnover indices Seasonally adjusted

		% variation		
		Annual ¹	Quarterly ²	Monthly ³
2009		-13.5		
2010		0.8		
2011		-1.0		
2012		-6.1		
2013		-3.6		
2011	TIII	0.5		-0.6
	TIV	-2.6		-2.0
2012	TI	-4.3		-1.4
	TII	-6.8		-2.9
	TIII	-5.9		0.3
	TIV	-7.4		-3.5
2013	TI	-5.7		0.4
	TII	-2.5		0.4
	TIII	-2.0		3.0
2012	AUG	-0.7		7.0
	SEP	-9.8		-9.4
	OCT	-7.4		0.8
	NOV	-8.1		-0.4
	DEC	-6.5		0.8
2013	JAN	-5.4		0.8
	FEB	-5.0		-0.6
	MAR	-6.7		-1.3
	APR	-2.9		0.8
	MAY	-2.1		1.3
	JUN	-2.4		-0.6
	JUL	-0.3		1.2
	AUG	-3.5		3.5

Note:

¹ **Annual rate:** Variation of a period over the same period of the previous year

² **Quarterly rate:** Variation of a quarter over the previous quarter. In the current quarter it is the average to date over the previous quarter

³ **Monthly rate:** Variation of a month over the previous month

5. National employed personnel indices by branch of activity

	Index	% variation		
		Monthly	Annual	Year-to-date average
GENERAL INDEX	95.5	-0.4	-1.1	-1.9
1. TRADE	94.5	-0.5	-1.9	-2.1
1.1. SALE AND REPAIR OF VEHICLES	88.1	-0.2	-3.7	-4.2
- Sale of motor vehicles	84.8	-0.3	-5.2	-5.7
- Maintenance and repair of motor vehicles	91.7	-0.1	-2.1	-2.6
1.2. WHOLESALE TRADE AND COMMISSION TRADE	92.8	-1.6	-1.3	-1.6
- Wholesale on a fee or contract basis	95.8	-0.2	-1.4	-1.3
- Wholesale of agricultural raw materials and live animals	100.7	0.0	-0.5	-1.3
- Wholesale of food, beverages and tobacco	92.0	-3.6	-0.1	-0.2
- Wholesale of household goods	93.4	-0.9	-1.2	-1.0
- Wholesale of information and communication equipment	94.8	-0.8	-2.4	-2.2
- Wholesale of other machinery, equipment and supplies	92.5	-0.5	-0.5	-2.9
- Other specialised wholesale trade	89.9	-1.1	-3.7	-3.7
- Non-specialised wholesale trade	93.4	0.2	-4.9	-5.9
1.3. RETAIL TRADE	96.8	0.1	-1.9	-2.0
2. OTHER SERVICES	96.2	-0.3	-0.5	-1.7
2.1. TRANSPORTATION AND STORAGE SERVICES	94.4	-0.4	-2.1	-2.3
Land transport	94.3	-0.3	-1.4	-2.0
- Rail transport	98.9	-0.1	-0.4	-0.7
- Taxi operation	99.0	-0.8	-1.7	-1.7
- Other passenger land transport	93.7	-0.9	-1.3	-2.0
- Freight transport by road and removal services	93.3	-0.1	-1.5	-2.1
Water transport	102.4	0.0	0.2	-5.3
Air transport	93.5	-1.3	-5.3	-4.1
Warehousing and support activities for transportation	97.1	-0.5	-2.4	-2.1
Post and courier activities	89.0	-0.2	-4.6	-3.9
2.2. ACCOMMODATION AND FOOD SERVICES ACTIVITIES	100.8	-0.2	0.9	-0.6
Accommodation	112.5	0.8	0.9	-1.3
Food and beverage service activities	97.8	-0.5	1.0	-0.4
2.3. INFORMATION AND COMMUNICATION	92.8	-0.5	-2.9	-3.7
Publishing activities	82.7	-0.5	-4.8	-6.4
Motion picture, television programme production and music publishing activities	73.0	-2.5	-11.4	-12.4
Programming and broadcasting activities	89.6	-1.2	-5.0	-7.6
Telecommunications	87.3	-0.4	-4.9	-5.0
Computer programming, consultancy and related activities	100.9	-0.2	-0.6	-1.1
Information service activities	95.0	-0.4	-2.8	-3.1
2.4. PROFESSIONAL, SCIENTIFIC AND TECHNICAL ACTIVITIES	93.9	-0.7	-0.4	-1.9
Legal, accounting and management consulting activities	97.6	-0.3	0.1	-0.5
Architectural and engineering activities; technical testing and analysis	90.3	-0.2	-0.6	-3.2
Advertising and market research	86.1	-4.1	-2.7	-4.7
Other professional scientific and technical activities	94.7	-0.9	-0.2	-1.6
2.5. ADMINISTRATIVE AND SUPPORT SERVICE ACTIVITIES	95.1	0.1	0.1	-1.7
Employment activities	93.3	-4.6	5.6	0.6
Travel agencies and tour operator services	91.2	-0.8	-3.7	-4.7
Security and investigation activities	93.9	1.8	-2.7	-3.3
Cleaning activities	96.7	2.0	-0.1	-1.5
Office administrative and other business support activities	93.8	-1.2	-1.0	-2.0

6. General turnover index by Autonomous Community

	Index	% variation		
		Monthly	Annual	Year-to-date average
NATIONAL INDEX	86.2	-13.7	-4.5	-4.0
Andalucía	85.4	-9.3	-6.1	-4.1
Aragón	88.5	-15.2	-7.3	-3.0
Asturias, Principado de	87.5	-9.4	-9.0	-4.9
Balears, Illes	147.8	0.8	4.2	4.2
Canarias	101.7	-2.7	-3.4	-3.5
Cantabria	95.4	-2.8	-10.0	-7.9
Castilla y León	95.8	-6.2	-6.8	-2.4
Castilla-La Mancha	85.8	-9.3	-8.0	-5.5
Cataluña	83.0	-20.7	-5.2	-4.4
Comunitat Valenciana	87.5	-12.6	-5.7	-4.3
Extremadura	90.2	-4.3	-6.5	-6.2
Galicia	99.7	-0.3	-4.6	-4.6
Madrid, Comunidad de	78.4	-17.8	-1.8	-4.0
Murcia, Región de	87.4	-15.9	-3.8	-0.9
Navarra, Comunidad Foral de	85.0	-7.0	-9.4	-6.5
País Vasco	75.0	-20.6	-4.9	-5.1
Rioja, La	91.5	-13.4	-5.0	-0.3

7. General employed personnel index by Autonomous Community

	Index	% variation		
		Monthly	Annual	Year-to-date average
NATIONAL INDEX	95.5	-0.4	-1.1	-1.9
Andalucía	94.3	-0.7	-0.5	-1.7
Aragón	94.2	0.6	-2.2	-2.2
Asturias, Principado de	93.0	0.3	-3.0	-3.5
Balears, Illes	115.6	0.3	4.5	2.5
Canarias	96.0	-0.2	0.7	-1.4
Cantabria	99.3	1.9	-1.7	-2.8
Castilla y León	93.7	0.0	-3.4	-3.3
Castilla-La Mancha	94.9	-0.2	0.0	-0.7
Cataluña	97.7	-0.9	-1.2	-1.7
Comunitat Valenciana	92.9	-0.7	-0.4	-1.3
Extremadura	96.9	0.0	-1.2	-2.2
Galicia	94.8	0.0	-2.0	-2.6
Madrid, Comunidad de	93.8	-0.1	-2.1	-2.8
Murcia, Región de	94.7	-1.4	0.0	-0.5
Navarra, Comunidad Foral de	95.7	-1.7	-3.2	-3.4
País Vasco	96.9	0.1	0.3	-1.0
Rioja, La	95.4	-0.4	-3.2	-2.5