

23 November 2020

Services Sector Activity Indicators (SSAI). Base 2015
September 2020. Provisional data

**Turnover in the¹ Market Services Sector stands at 1.7%, after
adjusting for seasonal and calendar effects**

**The annual rate stands at -13.8% in the series adjusted for
seasonal and calendar effects and at -12.7% in the original series**

Main results

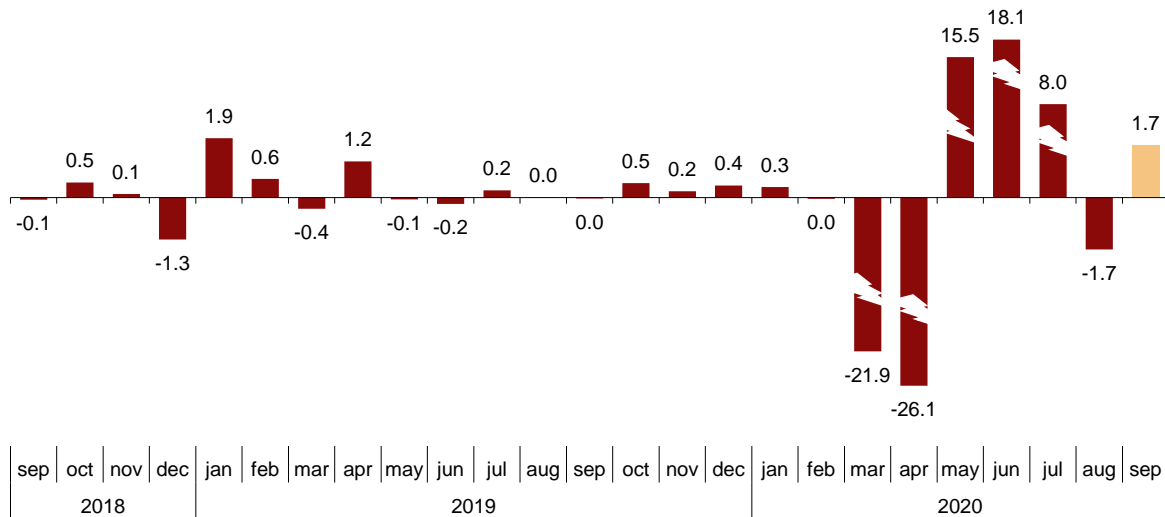
- Turnover in the Services Sector decreased by 1.7% in September compared to August. This increase is due to the 1.5% increase in Commerce, and an increase of 1.8% in Other Services.
- Wholesale trade (1.4%), Transportation and storage (2.6%) and Administrative activities and auxiliary services (7.2%) showed positive monthly rates. For its part, the Hotel and Catering Industry registered the greatest decrease compared to August (-12.2%).
- In the annual rate, in data corrected for seasonal and calendar effects, the Services Sector decreased 13.8% compared to September 2019.
- Tourism-related sectors continued to be those most affected. Travel agencies (-83.0%), Air transport (-75.1%) and Accommodation services (-73.1%) showed the greatest decreases compared to the previous year.
- Six activity branches grew compared to September 2019. Wholesale trade of information and communications technology equipment (5.7%), Postal and postal activities (3.8%) and Wholesale of household goods (2.2%) have the highest rates.
- While ERTes continued to mitigate effects on employment, the annual rate of employment decreased in both Commerce (-2.5%) and Other Services (-7.0%).
- The communities that are the most dependent on tourism registered the greatest decreases in services sector turnover, with annual rates of -44.3% in Illes Balears and -33.1% in Canarias. Employment was likewise affected in these communities, especially in Illes Balears, with an annual rate of -19.6%.

¹ As reflected in the methodology of this value index, the information is presented in current (nominal) terms, without adjusting the effects in the price variation.

Monthly trend in turnover for the Market Services Sector

After adjusting for seasonal and calendar effects, the monthly variation of the general index of turnover for the Market Services Sector between September and August was 1.7%. This rate is 3.4 points higher than that observed in August.

General index of the turnover for the Market Services Sector Seasonally and calendar adjusted. Monthly rate. Percentage

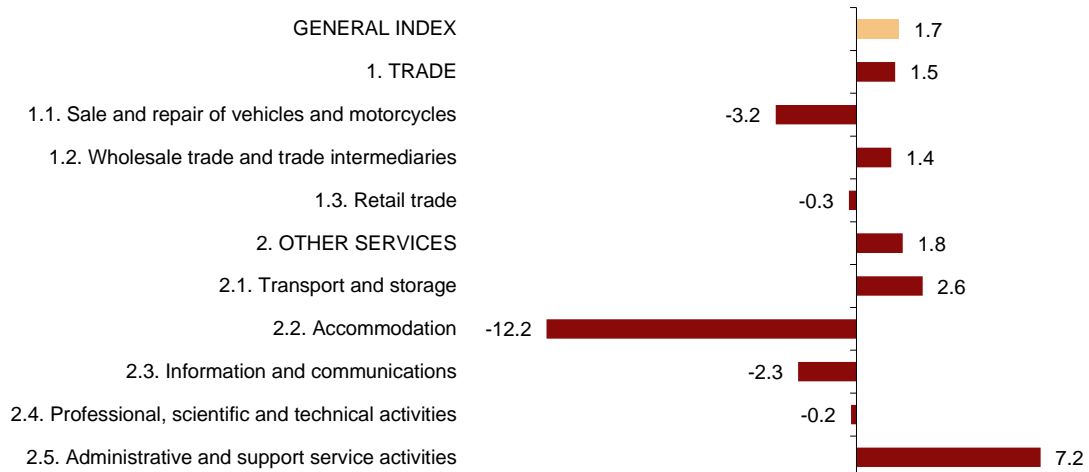


After adjusting for seasonal and calendar effects, *Trade* increased by 1.5% and *Other services* by 1.8%.

By sectors, *Administrative and support service activities* (7.2%), *Transport and storage* (2.6%) and *Wholesale trade and trade intermediaries* (1.4%) registered the largest increases. In turn, *Accommodation* (–12.2%), *Sale and repair of vehicles and motorcycles* (–3.2%) and *Information and communications* (–2.3%) recorded the largest decreases.

General and by sectors turnover Index

Seasonally and calendar adjusted. September 2020. Monthly rate. Percentage



A more detailed analysis shows the branches of activity that registered the highest monthly rates and those with the highest decreases in the month of September.

Types of activities with the highest monthly rates in the Services Sector turnover index

Seasonally and calendar adjusted. September 2020. Monthly rate

Activity (CNAE-2009 groups)	Monthly rate(%)
Employment activities	9.6
Cleaning activities	3.2
Warehousing and support activities for transportation	3.1

Types of activities with the lowest monthly rates in the Services Sector turnover index

Seasonally and calendar adjusted. September 2020 .Monthly rate

Activity (CNAE-2009 groups)	Monthly rate(%)
Accommodation	-35.0
Travel agencies and tour operator services	-18.7
Motion picture, television programme production and music publishing activities	-15.8

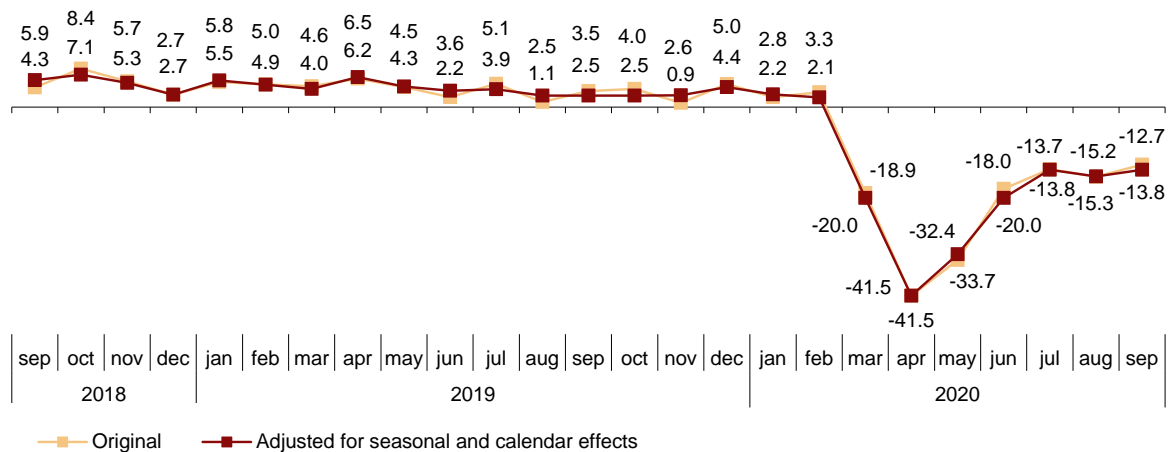
Annual trend in the turnover indices for the Market Services Sector

The general index of the turnover for the Market Services Sector, after adjusting for seasonal and calendar effects, experienced a variation of -13.8% in September compared to the same month of 2019. This rate is 1.4 points higher than that recorded in August.

The original series presented an annual variation of -12.7% , which is 2.6 points above that registered in August.

General index of turnover for the Market Services Sector

Annual Rate. Percentage



After adjusting for seasonal and calendar effects, *Trade* decreased by 8.2% as compared with September 2019 and *Other services* by 23.3% .

By sectors, *Retail trade* (-4.6%), *Sale and repair of vehicles and motorcycles* (-7.1%) and *Professional, scientific and technical activities* (-8.4%) registered the lowest decreases. In turn, *Accommodation* (-48.4%) and *Administrative and support service activities* (-35.1%) recorded the largest decreases.

Annual rates in Turnover index for the Market Services Sector: General and by sector. September 2020

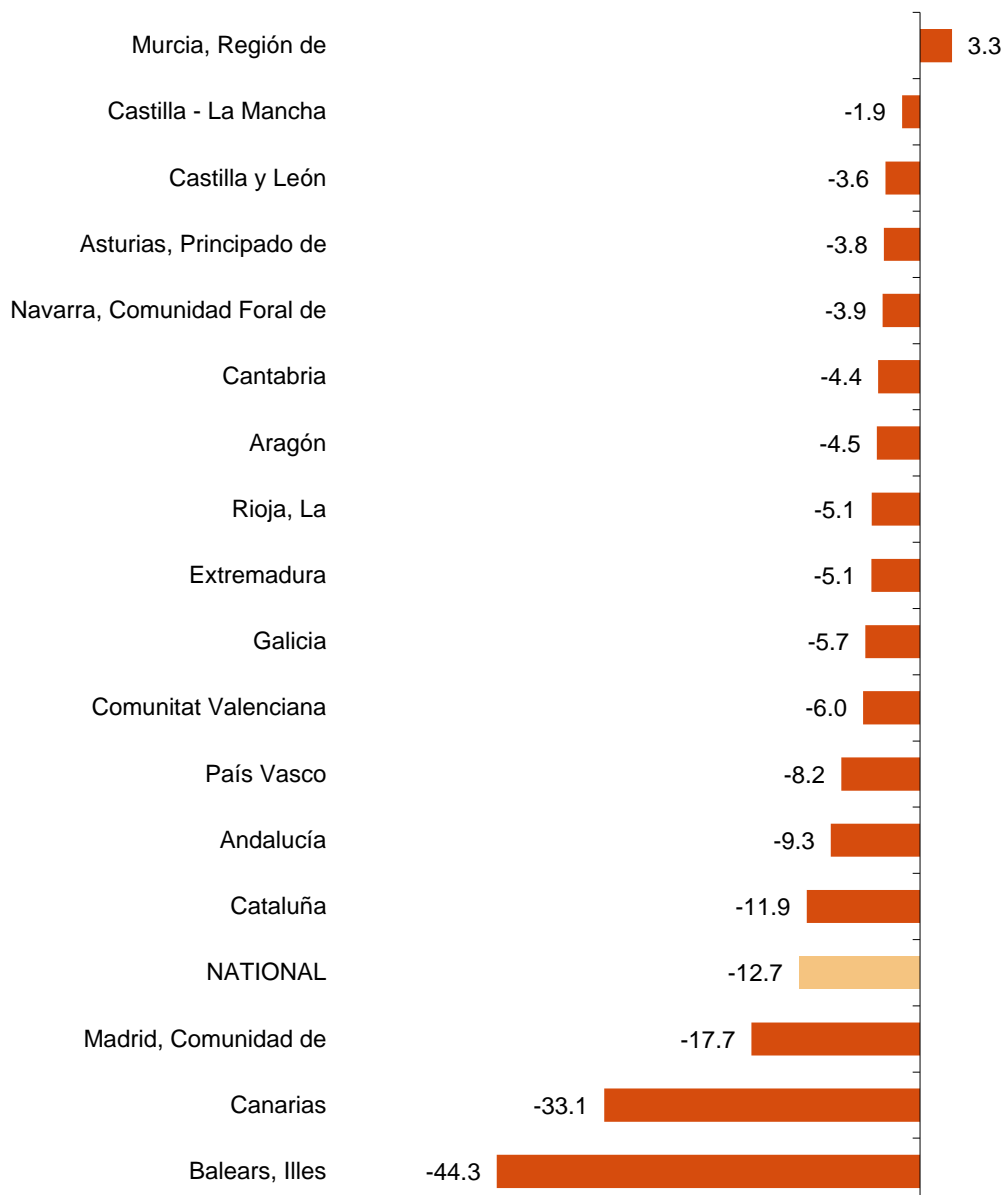
	Original index	Seasonally adjusted index
	Annual rate (%)	Annual rate (%)
GENERAL INDEX	-12.7	-13.8
1. TRADE	-6.8	-8.2
1.1. Sale and repair of vehicles and motorcycles	-4.1	-7.1
1.2. Wholesale trade	-9.0	-10.7
1.3. Retail trade	-3.0	-4.6
2. OTHER SERVICES	-22.8	-23.3
2.1. Transport and storage	-20.0	-21.1
2.2. Accommodation	-48.7	-48.4
2.3. Information and communications	-10.2	-11.1
2.4. Professional, scientific and technical activities	-7.4	-8.4
2.5. Administrative and support service activities	-34.6	-35.1

Results by Autonomous Community. Annual variation rates of turnover. Original series

Región de Murcia (3.3%) is the only autonomous community whose turnover increased in the Market Services Sector compared to September 2019.

The rest show negative rates. Those that decreased the most were Illes Balears (-44.3%), Canarias (-33.1%) and Comunidad de Madrid (-17.7%).

General Indices: National and by Autonomous Community September 2020. Turnover Annual Rate. Percentage



Employment trend

Employment in the Market Services Sector experienced a variation of -5.3% in September as compared to the same month of the previous year. This rate is two tenths higher than that registered in August.

The employment rate decreased by 2.5% in *Trade* and by 7.0% in *Other services*.

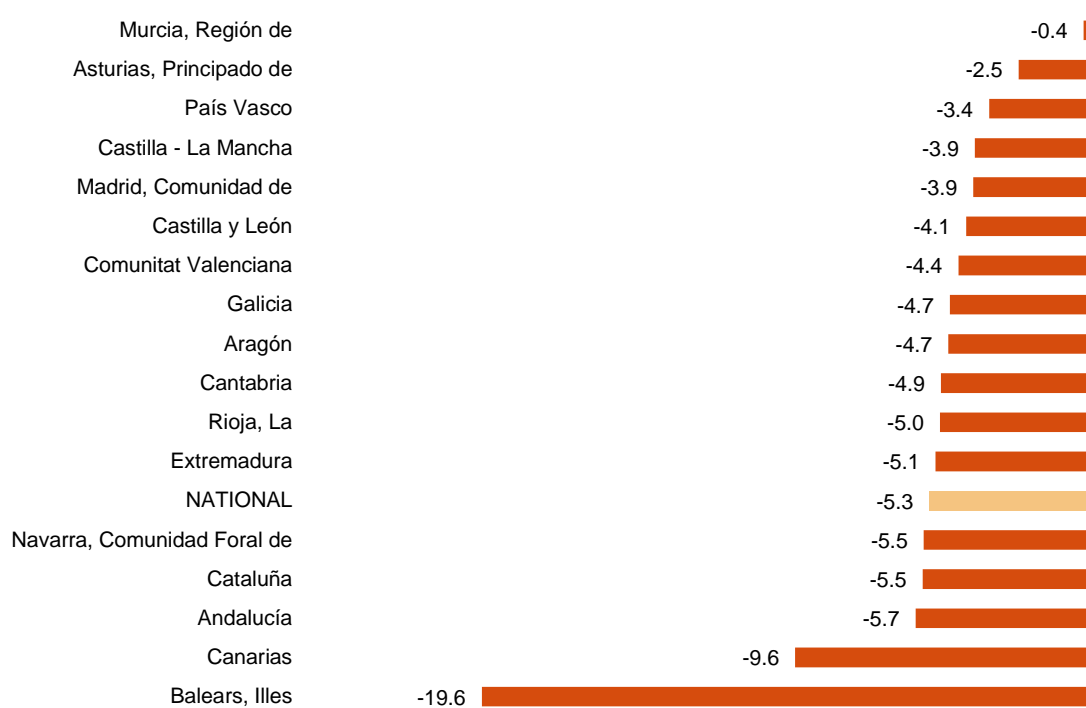
National Indices of employed personnel by sector. September 2020

	Index	Rate (%)	
		Monthly	Annual
GENERAL INDEX	104.7	0.8	-5.3
1. TRADE	103.9	-0.1	-2.5
1.1. Sale and repair of vehicles and motorcycles	104.2	0.2	-3.7
1.2. Wholesale trade	107.4	1.1	-1.4
1.3. Retail trade	101.7	-1.0	-3.0
2. OTHER SERVICES	105.2	1.4	-7.0
2.1. Transport and storage	106.4	0.7	-3.9
2.2. Accommodation	97.1	-0.1	-16.3
2.3. Information and communications	109.8	0.8	-1.1
2.4. Professional, scientific and technical activities	106.4	0.6	-1.8
2.5. Administrative and support service activities	110.7	4.3	-4.9

Results by Autonomous Community. Annual employment variation rates

Annual employment rate decreased as compared to september 2019 in all the Autonomous Communities. Región de Murcia (-0.4%) recorded the lowest decrease.

General Indices: National and by Autonomous Community September 2020. Annual rate of employed personnel. Percentage



Review and update of data

On the press release day, INE has updated SSAI data series corresponding to the last five months. In the case of calendar adjusted and seasonally and calendar adjusted series, according to INE standard, series are revised since its beginning. Results are available on INEBase.

Methodological note

The Services Sector Activity Indicators (SSAI) measure the short-term evolution of the activity of companies belonging to the Non-Financial Market Services sector through two variables: turnover and employed personnel. Turnover comprises the amounts invoiced by the company for provision of services and sale of goods. Employed personnel include both paid and unpaid personnel.

In order to obtain this data, an ongoing survey is conducted, every month researching more than 28,000 companies that operate in this sector. Results are presented as indices so as to measure variations as compared to the base year 2015.

The characteristics of this statistics are:

Type of survey: monthly continuous survey.

Base year: 2015.

Population scope: companies whose main economic activity is described in sections G, (Trade), H (Transport and Storage), I (Accommodation), J (Information and Communications), M (Professional, Scientific and Technical Activities) and N (Administrative and Support Services Activities) of the National Classification of Economic Activities (CNAE-09).

Geographical scope: all the national territory except for Ceuta and Melilla, for which it is only collected in division 47 of CNAE-09 (retail trade).

Sample size: 28,000 companies.

Type of sampling: stratified random sampling.

Collection method: completion of the questionnaire by the respondent using one of the following methods: internet (IRIA system), e-mail, fax, telephone or by postal mail.

For more information you can access the methodology at:

<https://www.ine.es/metodologia/t37/notaiass15.pdf>

And the standardised methodological report at:

<https://www.ine.es/dynt3/metadatos/es/RespuestaDatos.html?oe=30183>

For further information see INEbase: www.ine.es/en/ Twitter: @es_ine

All press releases at: www.ine.es/en/prensa/prensa_en.htm

Press office: Telephone numbers: (+34) 91 583 93 63 /94 08 – gprensa@ine.es

Information Area: Telephone number: (+34) 91 583 91 00 – www.ine.es/infoine/?L=1

Services Sector Activity Indicators. Base 2015

September 2020

Provisional data

1. Turnover indices: General and by sector Seasonally and calendar adjusted

	Index	Rate (%)		
		Monthly	Annual	Year-to-date average
GENERAL INDEX	105.6	1.7	-13.8	-16.9
1. TRADE	111.5	1.5	-8.2	-13.5
1.1. Sale and repair of vehicles and motorcycles	124.8	-3.2	-7.1	-22.2
1.2. Wholesale trade	111.5	1.4	-10.7	-13.7
1.3. Retail trade	106.3	-0.3	-4.6	-9.5
2. OTHER SERVICES	95.2	1.8	-23.3	-22.9
2.1. Transport and storage	97.1	2.6	-21.1	-20.4
2.2. Accommodation	61.4	-12.2	-48.4	-48.3
2.3. Information and communications	103.6	-2.3	-11.1	-9.5
2.4. Professional, scientific and technical activities	126.2	-0.2	-8.4	-12.8
2.5. Administrative and support service activities	81.9	7.2	-35.1	-29.9

2. Turnover indices: General and by sector Calendar adjusted

	Index	Rate (%)	
		Annual	Year-to-date average
GENERAL INDEX	105.3	-13.7	-17.3
1. TRADE	109.4	-8.2	-13.7
1.1. Sale and repair of vehicles and motorcycles	118.5	-7.5	-23.2
1.2. Wholesale trade	110.9	-10.8	-14.0
1.3. Retail trade	103.1	-4.5	-9.5
2. OTHER SERVICES	97.8	-23.3	-23.7
2.1. Transport and storage	97.8	-21.0	-20.9
2.2. Accommodation	68.2	-48.4	-50.4
2.3. Information and communications	105.2	-11.0	-9.7
2.4. Professional, scientific and technical activities	122.8	-8.3	-13.4
2.5. Administrative and support service activities	87.2	-35.1	-31.4

3. Turnover indices: General and by branch of activity Original series

	Index	Rate (%)	
		Annual	Year-to-date average
GENERAL INDEX	105.9	-12.7	-16.9
1. TRADE	110.2	-6.8	-13.3
1.1. SALE AND REPAIR OF VEHICLES	119.4	-4.1	-22.7
- Sale of motor vehicles	120.5	-4.3	-23.3
- Maintenance and repair of motor vehicles	112.9	-2.3	-18.9
1.2. WHOLESALE TRADE AND COMMISSION TRADE	111.9	-9.0	-13.5
- Wholesale on a fee or contract basis	124.6	-10.5	-12.5
- Wholesale of agricultural raw materials and live animals	113.9	-2.4	1.2
- Wholesale of food, beverages and tobacco	101.6	-8.4	-9.5
- Wholesale of household goods	127.3	2.2	-8.9
- Wholesale of information and communication equipment	122.2	5.7	2.1
- Wholesale of other machinery, equipment and supplies	134.8	-0.3	-7.2
- Other specialised wholesale trade	100.2	-23.7	-26.5
- Non-specialised wholesale trade	149.4	0.8	-11.8
1.3. RETAIL TRADE	103.5	-3.0	-9.3
2. OTHER SERVICES	98.2	-22.8	-23.4
2.1. TRANSPORTATION AND STORAGE SERVICES	98.4	-20.0	-20.6
Land transport	96.0	-15.6	-19.0
- Rail transport	64.7	-41.7	-40.4
- Taxi operation	51.0	-56.9	-52.8
- Other passenger land transport	65.4	-46.4	-45.5
- Freight transport by road and removal services	110.2	-1.3	-8.1
Water transport	97.4	-26.4	-21.6
Air transport	37.9	-75.1	-58.2
Warehousing and support activities for transportation	112.2	-10.9	-14.4
Post and courier activities	122.0	3.8	-2.7
2.2. ACCOMMODATION AND FOOD SERVICES ACTIVITIES	68.1	-48.7	-50.3
Accommodation	40.9	-73.1	-65.2
Food and beverage service activities	81.3	-34.8	-42.8
2.3. INFORMATION AND COMMUNICATION	105.7	-10.2	-9.3
Publishing activities	114.1	-4.0	-12.9
Motion picture, television programme production and music publishing activities	74.8	-37.0	-35.5
Programming and broadcasting activities	96.1	-18.6	-10.4
Telecommunications	108.1	-0.8	-1.7
Computer programming, consultancy and related activities	108.0	-14.9	-11.5
Information service activities	118.1	-5.7	-3.5
2.4. PROFESSIONAL, SCIENTIFIC AND TECHNICAL ACTIVITIES	123.2	-7.4	-13.2
Legal, accounting and management consulting activities	126.9	-7.9	-11.6
Architectural and engineering activities; technical testing and analysis	131.3	-3.7	-8.5
Advertising and market research	109.3	-11.2	-22.5
Other professional scientific and technical activities	113.3	-11.2	-12.8
2.5. ADMINISTRATIVE AND SUPPORT SERVICE ACTIVITIES	87.5	-34.6	-31.1
Employment activities	129.9	-11.9	-19.6
Travel agencies and tour operator services	24.1	-83.0	-72.0
Security and investigation activities	134.3	0.1	0.4
Cleaning activities	121.8	0.5	-2.1
Office administrative and other business support activities	126.2	-12.4	-14.1

4. Employed personnel indices: General and by branch of activity

	Index	Rate (%)		
		Monthly	Annual	Year-to-date average
GENERAL INDEX	104.7	0.8	-5.3	-4.1
1. TRADE	103.9	-0.1	-2.5	-1.7
1.1. SALE AND REPAIR OF VEHICLES	104.2	0.2	-3.7	-2.6
- Sale of motor vehicles	111.3	0.2	-3.0	-2.0
- Maintenance and repair of motor vehicles	97.0	0.3	-4.6	-3.4
1.2. WHOLESALE TRADE AND COMMISSION TRADE	107.4	1.1	-1.4	-0.9
- Wholesale on a fee or contract basis	105.5	1.5	-1.4	-0.3
- Wholesale of agricultural raw materials and live animals	110.2	1.8	2.3	0.3
- Wholesale of food, beverages and tobacco	108.2	3.3	-0.9	-1.0
- Wholesale of household goods	104.5	-0.3	-2.6	-2.1
- Wholesale of information and communication equipment	107.4	-0.2	-1.3	-1.2
- Wholesale of other machinery, equipment and supplies	111.4	0.4	-1.3	-0.3
- Other specialised w holesale trade	107.1	-0.6	-1.6	-0.1
- Non-specialised w holesale trade	109.4	0.5	-2.0	-2.5
1.3. RETAIL TRADE	101.7	-1.0	-3.0	-2.1
2. OTHER SERVICES	105.2	1.4	-7.0	-5.6
2.1. TRANSPORTATION AND STORAGE SERVICES	106.4	0.7	-3.9	-3.0
Land transport	103.9	0.9	-4.2	-3.4
- Rail transport	108.2	-0.1	0.9	1.9
- Taxi operation	94.7	0.0	-8.4	-6.6
- Other passenger land transport	105.4	5.1	-7.5	-5.0
- Freight transport by road and removal services	105.3	0.0	-2.4	-2.3
Water transport	123.0	-3.7	-13.5	-9.2
Air transport	110.3	-0.4	-8.8	-3.8
Warehousing and support activities for transportation	112.1	0.5	-3.1	-2.5
Post and courier activities	103.6	0.7	-1.4	-1.1
2.2. ACCOMMODATION AND FOOD SERVICES ACTIVITIES	97.1	-0.1	-16.3	-12.0
Accommodation	99.3	-7.4	-24.5	-18.0
Food and beverage service activities	96.5	2.1	-13.7	-10.3
2.3. INFORMATION AND COMMUNICATION	109.8	0.8	-1.1	-0.2
Publishing activities	96.7	-0.6	-3.3	-2.1
Motion picture, television programme production and music publishing activities	102.4	2.9	-8.5	-8.6
Programming and broadcasting activities	100.7	0.4	-1.6	-1.7
Telecommunications	90.2	0.5	0.4	-0.8
Computer programming, consultancy and related activities	120.2	0.9	-0.2	1.5
Information service activities	106.1	0.9	0.4	0.5
2.4. PROFESSIONAL, SCIENTIFIC AND TECHNICAL ACTIVITIES	106.4	0.6	-1.8	-1.4
Legal, accounting and management consulting activities	104.1	0.7	-1.8	-1.6
Architectural and engineering activities; technical testing and analysis	114.0	0.3	-0.1	-0.1
Advertising and market research	99.6	1.3	-6.2	-3.9
Other professional scientific and technical activities	104.6	0.1	-2.0	-1.4
2.5. ADMINISTRATIVE AND SUPPORT SERVICE ACTIVITIES	110.7	4.3	-4.9	-5.5
Employment activities	110.1	13.2	-14.8	-17.3
Travel agencies and tour operator services	96.5	-0.9	-10.5	-7.2
Security and investigation activities	117.3	-0.6	-2.6	-0.1
Cleaning activities	110.1	3.4	-0.1	-1.3
Office administrative and other business support activities	112.4	3.2	-4.0	-4.5

5. Turnover indices: National and by Autonomous Community

	Index	Rate (%)	
		Annual	Year-to-date average
NATIONAL	105.9	-12.7	-16.9
Andalucía	103.2	-9.3	-14.3
Aragón	114.1	-4.5	-12.5
Asturias, Principado de	113.1	-3.8	-12.5
Balears, Illes	80.6	-44.3	-39.8
Canarias	78.4	-33.1	-29.6
Cantabria	121.2	-4.4	-12.8
Castilla y León	103.4	-3.6	-11.8
Castilla-La Mancha	119.1	-1.9	-11.6
Cataluña	102.5	-11.9	-17.2
Comunitat Valenciana	108.5	-6.0	-12.8
Extremadura	117.0	-5.1	-6.1
Galicia	121.5	-5.7	-14.4
Madrid, Comunidad de	107.0	-17.7	-19.7
Murcia, Región de	113.8	3.3	-2.8
Navarra, Comunidad Foral de	118.2	-3.9	-11.1
País Vasco	112.5	-8.2	-13.9
Rioja, La	118.1	-5.1	-11.2

6. Employed personnel indices: National and by Autonomous Community

	Index	Rate (%)		
		Monthly	Annual	Year-to-date average
NATIONAL	104.7	0.8	-5.3	-4.1
Andalucía	101.5	0.7	-5.7	-4.6
Aragón	107.4	0.1	-4.7	-3.5
Asturias, Principado de	104.3	0.6	-2.5	-3.0
Balears, Illes	107.3	-3.8	-19.6	-14.2
Canarias	100.1	0.0	-9.6	-6.4
Cantabria	105.9	-1.1	-4.9	-4.7
Castilla y León	102.6	0.7	-4.1	-3.8
Castilla-La Mancha	104.8	0.5	-3.9	-3.2
Cataluña	106.7	0.7	-5.5	-4.1
Comunitat Valenciana	104.9	2.6	-4.4	-3.3
Extremadura	104.2	-0.5	-5.1	-3.7
Galicia	105.3	-0.2	-4.7	-3.6
Madrid, Comunidad de	105.5	1.5	-3.9	-3.1
Murcia, Región de	109.7	0.2	-0.4	-1.3
Navarra, Comunidad Foral de	104.7	1.5	-5.5	-4.7
País Vasco	103.3	1.9	-3.4	-3.0
Rioja, La	105.8	1.2	-5.0	-3.4