

19 December 2023
(Text in translation process)

Services Sector Activity Indicators (SSAI). Base 2015
October 2023. Provisional data

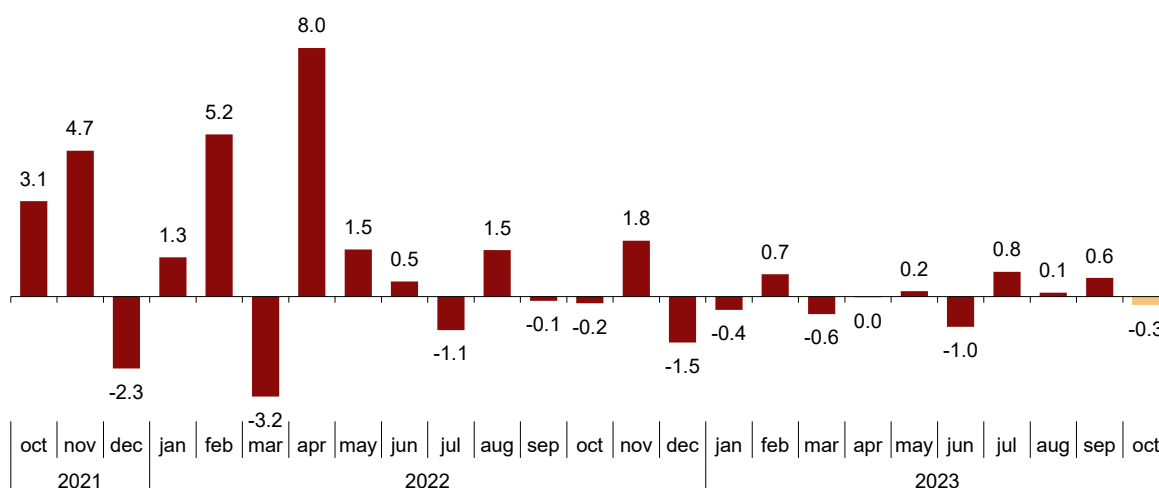
The Turnover index in the¹ Market Services Sector stands at -0.3% , after adjusting for seasonal and calendar effects

The annual rate stands at 0.4% in the series adjusted for seasonal and calendar effects and at 1.5% in the original series

Monthly trend in turnover for the Market Services Sector

After adjusting for seasonal and calendar effects, the monthly variation of the general index of turnover for the Market Services Sector between October and September was -0.3% . This rate is almost one point lower than that observed in September.

General index of the turnover for the Market Services Sector
Seasonally and calendar adjusted. Monthly rate. Percentage



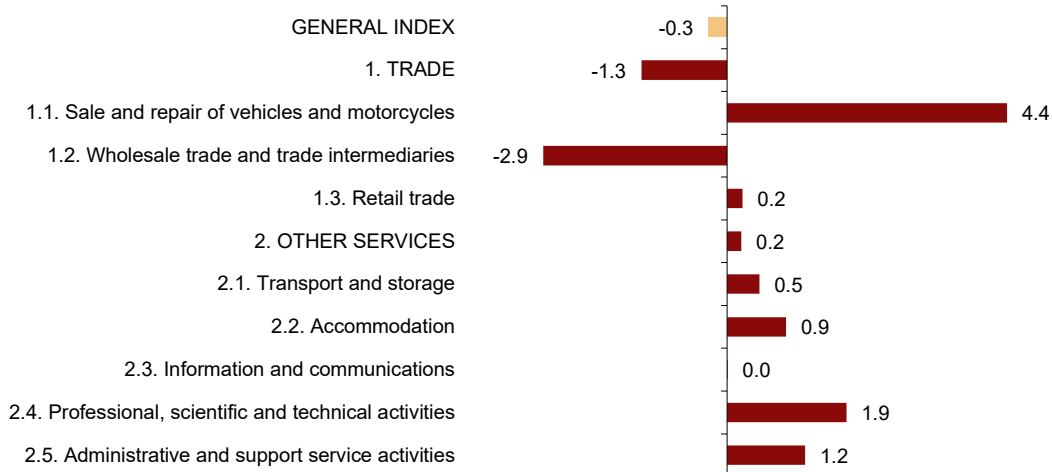
¹ As reflected in the methodology of this value index, the information is presented in current (nominal) terms, without adjusting the effects in the price variation.

After adjusting for seasonal and calendar effects, *Trade* decreased by 1.3% while *Other services* increased by 0.2%.

By sector, *Sale and repair of vehicles and motorcycles* (4.4%), *Professional, scientific and technical activities* (1.9%) and *Administrative and support service activities* (1.2%) registered the largest increases. In turn, *Wholesale trade and trade intermediaries* (–2.9%) recorded negative monthly rates.

General and by sectors turnover Index

Seasonally and calendar adjusted. October 2023. Monthly rate. Percentage



A more detailed analysis shows the branches of activity that registered the highest monthly rates and those with the highest decreases in the month of October.

Types of activities with the highest monthly rates in the Services Sector turnover index

Seasonally and calendar adjusted. October 2023. Monthly rate

Activity (CNAE-2009 groups)	Monthly rate(%)
Office administrative and other business support activities	4.5
Sale and repair of vehicles	4.4
Legal, accounting and management consulting activities	3.2

Types of activities with the lowest monthly rates in the Services Sector turnover index

Seasonally and calendar adjusted. October 2023. Monthly rate

Activity (CNAE-2009 groups)	Monthly rate(%)
Motion picture, television programme production and music publishing activities	-8.3
Wholesale trade and commission trade	-2.9
Air transport	-2.9

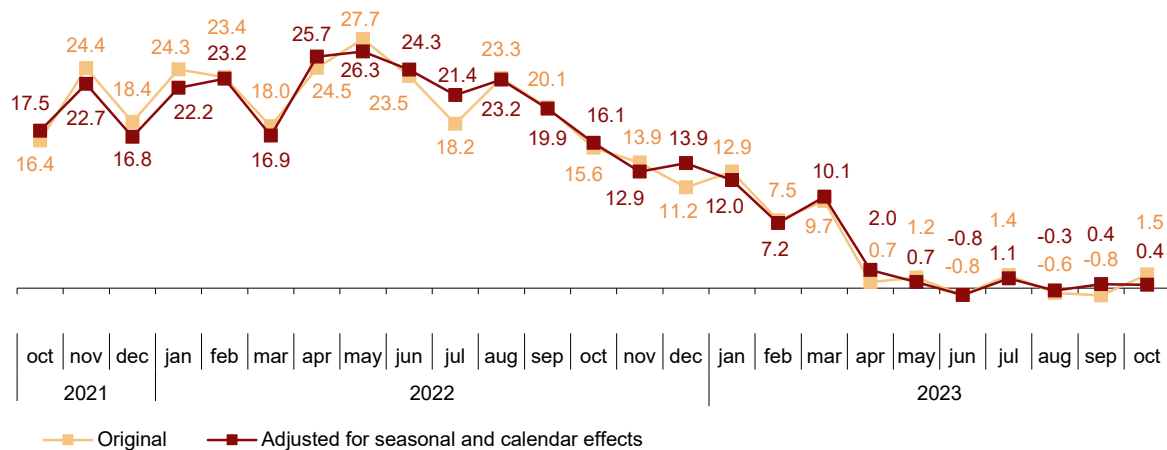
Annual trend in the turnover index for the Market Services Sector

The general index of the turnover for the Market Services Sector, after adjusting for seasonal and calendar effects, experienced a variation of 0.4% in October compared to the same month of 2022. This rate is the same as that recorded in September.

The original series presented an annual variation of 1.5%, which is 2.3 points above that registered in September.

General index of turnover for the Market Services Sector

Annual Rate. Percentage



After adjusting for seasonal and calendar effects, *Trade* decreased by 2.2% as compared with October 2022 while *Other services* increased by 6.3%.

By sectors, *Sale and repair of vehicles and motorcycles* (17.4%), *Accommodation* (10.5%) and *Administrative and support service activities* (8.2%) registered the largest increases. In turn, *Wholesale trade* (-8.7%) and *Transport and storage* (-0.8%) recorded the decreases.

Annual rates in Turnover index for the Market Services Sector: General and by sector. October 2023

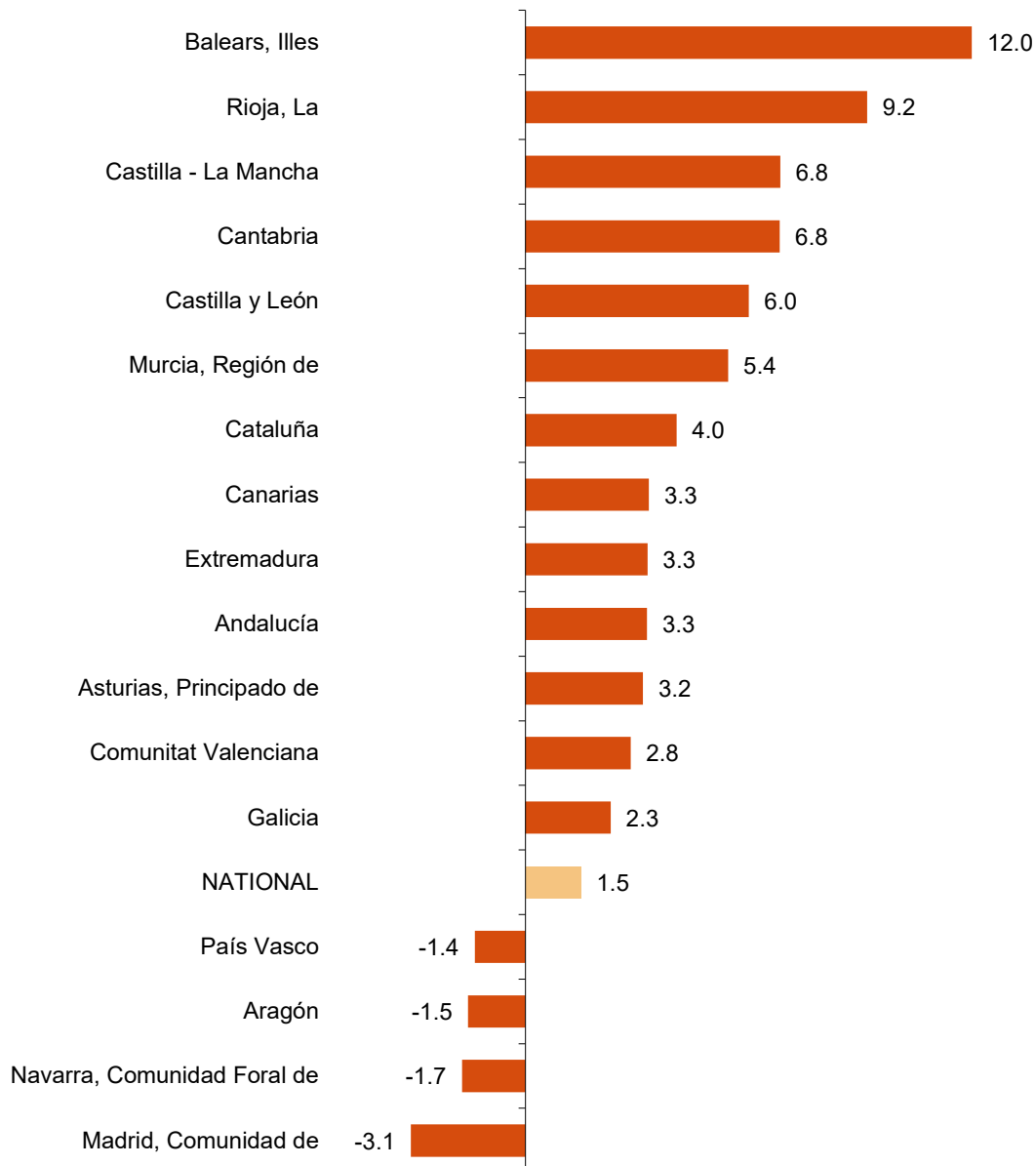
	Original index	Seasonally adjusted index
	Annual rate (%)	Annual rate (%)
GENERAL INDEX	1.5	0.4
1. TRADE	-1.0	-2.2
1.1. Sale and repair of vehicles and motorcycles	17.7	17.4
1.2. Wholesale trade	-6.9	-8.7
1.3. Retail trade	7.4	8.2
2. OTHER SERVICES	6.5	6.3
2.1. Transport and storage	0.6	-0.8
2.2. Accommodation	10.0	10.5
2.3. Information and communications	8.7	7.9
2.4. Professional, scientific and technical activities	8.6	7.0
2.5. Administrative and support service activities	9.0	8.2

Results by Autonomous Community. Annual variation rates of the turnover index. Original series

Annual rate in Turnover index for the Market Services Sector increased as compared to October 2022 in 13 Autonomous Communities and decreased in the other four.

Illes Balears (12.0%), La Rioja (9.2%) and Castilla - La Mancha (6.8%) registered the largest increases. Comunidad de Madrid (−3.1%), Comunidad Foral de Navarra (−1.7%) and Aragón (−1.5%) recorded the largest decreases.

General Indices: National and by Autonomous Community October 2023. Annual Rate. Percentage



Employment trend

The Employment in the Market Services Sector index experienced a variation of 1.9% in October as compared to the same month of the previous year. This rate is one tenth higher than that registered in September.

The employment rate increased by 1.6% in *Trade* and by 2.1% in *Other services*.

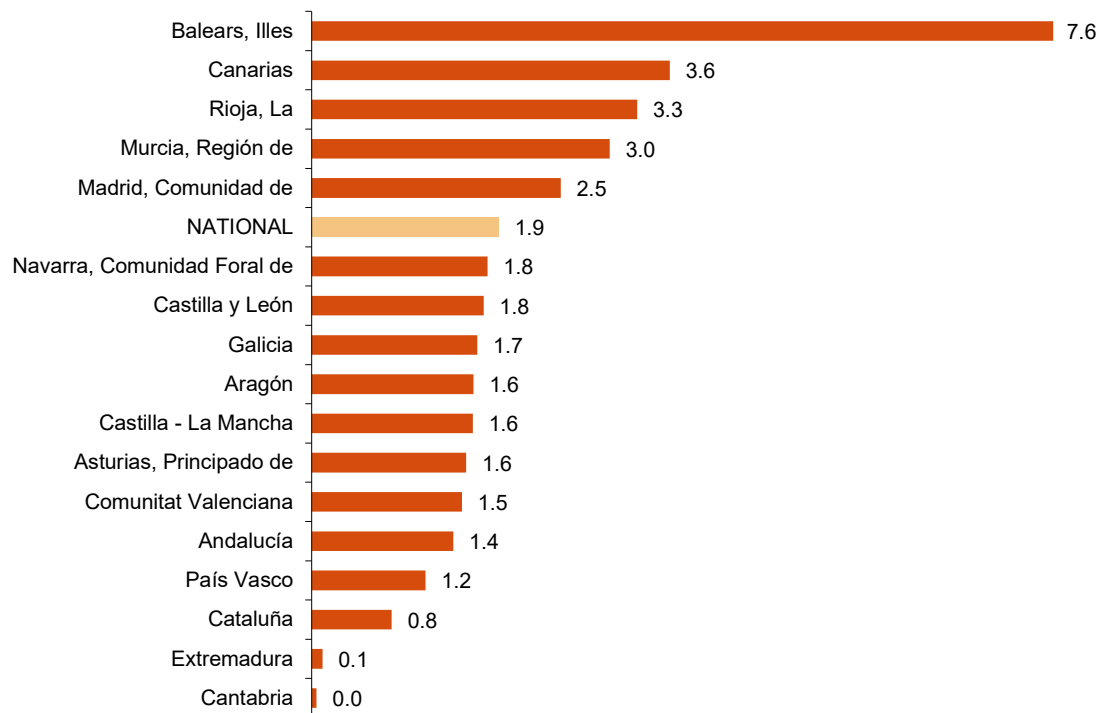
National Indices of employed personnel by sector. October 2023

	Index	Rate (%)	
		Monthly	Annual
GENERAL INDEX	113.2	-0.3	1.9
1. TRADE	109.8	0.5	1.6
1.1. Sale and repair of vehicles and motorcycles	107.4	0.1	1.6
1.2. Wholesale trade	115.0	2.8	1.6
1.3. Retail trade	106.8	-0.9	1.5
2. OTHER SERVICES	115.3	-0.8	2.1
2.1. Transport and storage	115.0	0.0	3.0
2.2. Accommodation	109.4	-3.2	2.8
2.3. Information and communications	124.7	0.2	3.3
2.4. Professional, scientific and technical activities	115.1	0.2	2.4
2.5. Administrative and support service activities	118.8	0.0	0.2

Results by Autonomous Community. Annual employment variation rates index

Annual employment rate increased as compared to October 2022 in 16 Autonomous Communities. Illes Balears (7.6%) recorded the largest increase.

General Indices: National and by Autonomous Community October 2023. Annual rate. Percentage



Review and update of data

On the press release day, INE has updated SSAI data series corresponding to the last five months. In the case of calendar adjusted and seasonally and calendar adjusted series, according to INE standard, series are revised since its beginning. Results are available on INEBase.

Methodological note

The Services Sector Activity Indicators (SSAI) measure the short-term evolution of the activity of companies belonging to the Non-Financial Market Services sector through two variables: turnover and employed personnel. Turnover comprises the amounts invoiced by the company for provision of services and sale of goods. Employed personnel include both paid and unpaid personnel.

In order to obtain this data, an ongoing survey is conducted, every month researching more than 28,000 companies that operate in this sector. Results are presented as indices so as to measure variations as compared to the base year 2015.

The characteristics of this statistics are:

Type of survey: monthly continuous survey.

Base year: 2015.

Population scope: companies whose main economic activity is described in sections G, (Trade), H (Transport and Storage), I (Accommodation), J (Information and Communications), M (Professional, Scientific and Technical Activities) and N (Administrative and Support Services Activities) of the National Classification of Economic Activities (CNAE-09).

Geographical scope: all the national territory except for Ceuta and Melilla, for which it is only collected in division 47 of CNAE-09 (retail trade).

Sample size: 28,000 companies.

Type of sampling: stratified random sampling.

Collection method: completion of the questionnaire by the respondent using one of the following methods: internet (IRIA system), e-mail, fax, telephone or by postal mail.

For more information you can access the methodology at:

<https://www.ine.es/metodologia/t37/notaiass15.pdf>

And the standardised methodological report at:

<https://www.ine.es/dynt3/metadatos/es/RespuestaDatos.html?oe=30183>

INE statistics are produced in accordance with the Code of Good Practice for European Statistics, which is the basis for the institution's quality policy and strategy. For more information see the section on [Quality at INE and the Code of Best Practices](#) on the INE website.

For further information see **INEbase:** www.ine.es/en/ Twitter: [@es_ine](https://twitter.com/es_ine)

All press releases at: www.ine.es/en/prensa/prensa_en.htm

Press office: Telephone numbers: (+34) 91 583 93 63 / 94 08 – gprensa@ine.es

Information Area: Telephone number: (+34) 91 583 91 00 – www.ine.es/infoine/?L=1

Services Sector Activity Indicators. Base 2015

October 2023

Provisional data

1. Turnover indices: General and by sector Seasonally and calendar adjusted

	Index	Rate (%)		
		Monthly	Annual	Year-to-date average
GENERAL INDEX	147.2	-0.3	0.4	3.1
1. TRADE	147.9	-1.3	-2.2	1.3
1.1. Sale and repair of vehicles and motorcycles	161.4	4.4	17.4	16.7
1.2. Wholesale trade	151.9	-2.9	-8.7	-4.0
1.3. Retail trade	138.7	0.2	8.2	9.3
2. OTHER SERVICES	143.3	0.2	6.3	6.7
2.1. Transport and storage	142.7	0.5	-0.8	0.9
2.2. Accommodation	134.0	0.9	10.5	11.7
2.3. Information and communications	132.4	0.0	7.9	6.8
2.4. Professional, scientific and technical activities	166.4	1.9	7.0	9.1
2.5. Administrative and support service activities	147.3	1.2	8.2	10.7

2. Turnover indices: General and by sector Calendar adjusted

	Index	Rate (%)	
		Annual	Year-to-date average
GENERAL INDEX	151.1	0.3	2.9
1. TRADE	152.4	-2.4	1.1
1.1. Sale and repair of vehicles and motorcycles	168.3	18.1	16.9
1.2. Wholesale trade	158.5	-8.7	-4.2
1.3. Retail trade	137.3	7.6	9.3
2. OTHER SERVICES	148.9	5.8	6.6
2.1. Transport and storage	149.8	-0.9	0.8
2.2. Accommodation	136.6	10.6	10.9
2.3. Information and communications	133.6	7.7	6.7
2.4. Professional, scientific and technical activities	174.4	7.5	9.0
2.5. Administrative and support service activities	149.5	8.2	10.1

3. Turnover indices: General and by branch of activity Original series

	Index	Rate (%)	
		Annual	Year-to-date average
GENERAL INDEX	150.2	1.5	3.0
1. TRADE	151.2	-1.0	1.2
1.1. SALE AND REPAIR OF VEHICLES	163.8	17.7	17.0
- Sale of motor vehicles	166.9	19.2	18.4
- Maintenance and repair of motor vehicles	143.9	7.8	7.9
1.2. WHOLESALE TRADE AND COMMISSION TRADE	156.9	-6.9	-4.1
- Wholesale on a fee or contract basis	162.1	-0.5	-5.1
- Wholesale of agricultural raw materials and live animals	150.1	-18.8	-3.4
- Wholesale of food, beverages and tobacco	144.2	6.6	8.6
- Wholesale of household goods	160.4	4.9	4.6
- Wholesale of information and communication equipment	158.3	-0.6	8.0
- Wholesale of other machinery, equipment and supplies	175.3	-6.7	-0.7
- Other specialised wholesale trade	161.5	-21.6	-19.6
- Non-specialised wholesale trade	198.1	0.2	1.4
1.3. RETAIL TRADE	135.8	7.4	9.3
2. OTHER SERVICES	148.5	6.5	6.6
2.1. TRANSPORTATION AND STORAGE SERVICES	148.7	0.6	0.9
Land transport	133.8	4.3	3.0
- Rail transport	93.7	2.0	-4.2
- Taxi operation	119.7	10.4	13.1
- Other passenger land transport	116.6	7.5	5.5
- Freight transport by road and removal services	143.6	3.6	2.7
Water transport	145.1	4.2	11.3
Air transport	172.2	10.5	23.1
Warehousing and support activities for transportation	160.2	-4.9	-5.4
Post and courier activities	135.6	4.8	2.8
2.2. ACCOMMODATION AND FOOD SERVICES ACTIVITIES	137.1	10.0	10.9
Accommodation	153.2	17.0	14.7
Food and beverage service activities	130.3	6.5	8.9
2.3. INFORMATION AND COMMUNICATION	133.0	8.7	6.7
Publishing activities	126.3	6.8	5.8
Motion picture, television programme production and music publishing activities	92.8	-4.5	-3.2
Programming and broadcasting activities	126.5	6.1	0.2
Telecommunications	109.8	4.5	3.0
Computer programming, consultancy and related activities	167.3	14.6	12.3
Information service activities	169.0	7.3	8.0
2.4. PROFESSIONAL, SCIENTIFIC AND TECHNICAL ACTIVITIES	173.4	8.6	9.0
Legal, accounting and management consulting activities	191.0	12.4	9.6
Architectural and engineering activities; technical testing and analysis	155.2	4.7	9.7
Advertising and market research	163.6	6.2	4.8
Other professional scientific and technical activities	203.9	12.1	15.8
2.5. ADMINISTRATIVE AND SUPPORT SERVICE ACTIVITIES	149.0	9.0	10.1
Employment activities	148.3	3.9	-4.4
Travel agencies and tour operator services	154.3	20.8	29.0
Security and investigation activities	165.0	7.2	8.1
Cleaning activities	144.2	7.9	6.1
Office administrative and other business support activities	158.5	-0.1	-0.8

4. Employed personnel indices: General and by branch of activity

	Index	Rate (%)		
		Monthly	Annual	Year-to-date average
GENERAL INDEX	113.2	-0.3	1.9	1.9
1. TRADE	109.8	0.5	1.6	1.7
1.1. SALE AND REPAIR OF VEHICLES	107.4	0.1	1.6	1.3
- Sale of motor vehicles	114.3	0.1	2.3	1.2
- Maintenance and repair of motor vehicles	100.2	0.0	0.8	1.4
1.2. WHOLESALE TRADE AND COMMISSION TRADE	115.0	2.8	1.6	1.7
- Wholesale on a fee or contract basis	107.7	0.2	0.6	0.3
- Wholesale of agricultural raw materials and live animals	113.5	0.6	-1.0	0.4
- Wholesale of food, beverages and tobacco	120.0	8.1	1.6	1.9
- Wholesale of household goods	109.9	0.2	1.4	2.2
- Wholesale of information and communication equipment	119.0	0.1	2.7	3.7
- Wholesale of other machinery, equipment and supplies	116.8	0.0	2.3	1.7
- Other specialised wholesale trade	113.1	0.5	1.9	0.9
- Non-specialised wholesale trade	122.2	-0.4	4.1	3.9
1.3. RETAIL TRADE	106.8	-0.9	1.5	1.7
2. OTHER SERVICES	115.3	-0.8	2.1	2.1
2.1. TRANSPORTATION AND STORAGE SERVICES	115.0	0.0	3.0	3.1
Land transport	111.1	0.3	2.7	2.7
- Rail transport	127.8	0.1	8.8	12.9
- Taxi operation	105.0	0.3	5.6	4.3
- Other passenger land transport	112.9	0.0	3.0	3.9
- Freight transport by road and removal services	111.0	0.4	1.6	1.5
Water transport	129.8	-5.5	1.5	4.3
Air transport	129.9	-2.8	7.0	7.1
Warehousing and support activities for transportation	126.6	0.1	3.8	3.9
Post and courier activities	101.7	-0.9	1.2	1.0
2.2. ACCOMMODATION AND FOOD SERVICES ACTIVITIES	109.4	-3.2	2.8	2.6
Accommodation	122.4	-7.7	3.5	3.5
Food and beverage service activities	105.8	-1.8	2.6	2.4
2.3. INFORMATION AND COMMUNICATION	124.7	0.2	3.3	4.2
Publishing activities	99.4	-0.1	0.8	1.9
Motion picture, television programme production and music publishing activities	105.6	-1.8	-1.3	3.0
Programming and broadcasting activities	100.8	-0.4	0.7	1.0
Telecommunications	93.1	0.1	0.5	0.8
Computer programming, consultancy and related activities	144.8	0.5	5.0	5.7
Information service activities	115.5	0.5	1.0	1.8
2.4. PROFESSIONAL, SCIENTIFIC AND TECHNICAL ACTIVITIES	115.1	0.2	2.4	2.8
Legal, accounting and management consulting activities	110.8	-0.2	1.6	2.0
Architectural and engineering activities; technical testing and analysis	128.1	0.5	4.6	4.6
Advertising and market research	106.4	0.0	1.1	2.0
Other professional scientific and technical activities	110.0	0.7	0.9	1.3
2.5. ADMINISTRATIVE AND SUPPORT SERVICE ACTIVITIES	118.8	0.0	0.2	-0.4
Employment activities	125.3	2.2	-4.2	-8.8
Travel agencies and tour operator services	111.5	-0.2	10.1	10.2
Security and investigation activities	133.4	0.9	3.9	3.8
Cleaning activities	110.6	-1.8	1.3	0.8
Office administrative and other business support activities	122.4	0.4	-1.0	1.0

5. Turnover indices: National and by Autonomous Community

	Index	Rate (%)	
		Annual	Year-to-date average
NATIONAL	150.2	1.5	3.0
Andalucía	145.2	3.3	6.8
Aragón	146.4	-1.5	2.7
Asturias, Principado de	147.2	3.2	7.8
Balears, Illes	156.3	12.0	14.2
Canarias	138.4	3.3	7.5
Cantabria	157.6	6.8	4.8
Castilla y León	139.8	6.0	3.9
Castilla-La Mancha	159.7	6.8	6.6
Cataluña	145.9	4.0	4.0
Comunitat Valenciana	146.2	2.8	2.7
Extremadura	147.6	3.3	4.9
Galicia	174.5	2.3	4.6
Madrid, Comunidad de	155.4	-3.1	-1.6
Murcia, Región de	142.1	5.4	5.0
Navarra, Comunidad Foral de	159.2	-1.7	1.8
País Vasco	148.0	-1.4	2.8
Rioja, La	162.4	9.2	6.7

6. Employed personnel indices: National and by Autonomous Community

	Index	Rate (%)		
		Monthly	Annual	Year-to-date average
NATIONAL	113.2	-0.3	1.9	1.9
Andalucía	109.4	-0.9	1.4	1.8
Aragón	110.5	-0.2	1.6	0.6
Asturias, Principado de	109.1	-1.2	1.6	1.3
Balears, Illes	129.9	-5.9	7.6	6.2
Canarias	110.9	1.0	3.6	3.3
Cantabria	107.6	-1.9	0.0	-0.2
Castilla y León	104.6	-0.7	1.8	0.8
Castilla-La Mancha	113.2	-0.8	1.6	1.8
Cataluña	115.1	-0.9	0.8	1.5
Comunitat Valenciana	113.6	2.5	1.5	1.0
Extremadura	109.5	-1.4	0.1	1.3
Galicia	111.1	-0.6	1.7	1.1
Madrid, Comunidad de	115.7	0.3	2.5	2.9
Murcia, Región de	120.3	0.1	3.0	2.2
Navarra, Comunidad Foral de	111.2	-1.0	1.8	1.6
País Vasco	108.3	-0.3	1.2	1.5
Rioja, La	111.9	0.1	3.3	1.5