

21 January 2021

**Services Sector Activity Indicators (SSAI). Base 2015**  
November 2020. Provisional data

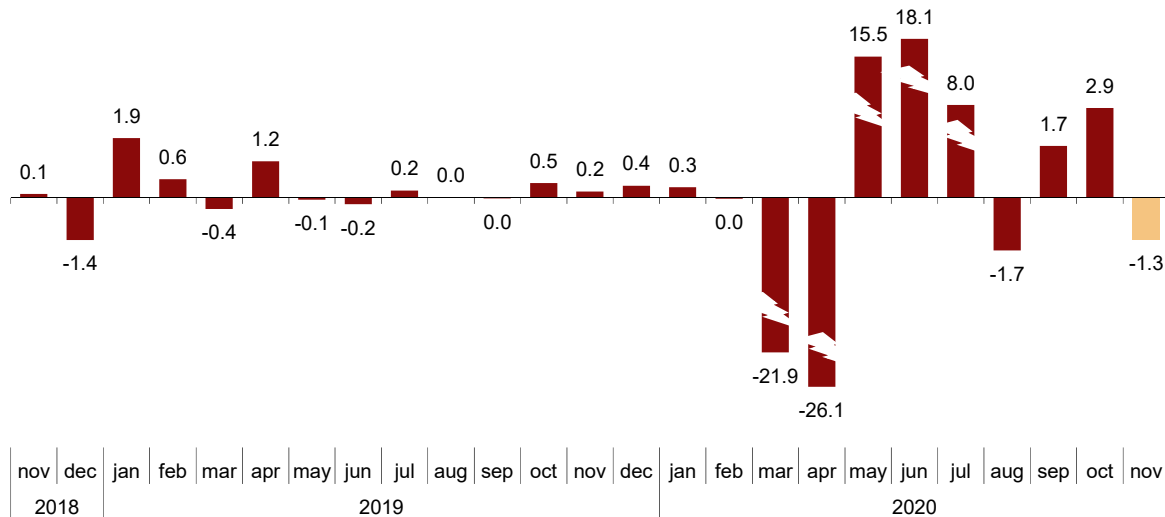
**Turnover in the<sup>1</sup> Market Services Sector stands at  $-1.3\%$ , after adjusting for seasonal and calendar effects**

**The annual rate stands at  $-13.2\%$  in the series adjusted for seasonal and calendar effects and at  $-12.6\%$  in the original series**

**Monthly trend in turnover for the Market Services Sector**

After adjusting for seasonal and calendar effects, the monthly variation of the general index of turnover for the Market Services Sector between November and October was  $-1.3\%$ . This rate is 4.2 points lower than that observed in October.

**General index of the turnover for the Market Services Sector**  
Seasonally and calendar adjusted. Monthly rate. Percentage



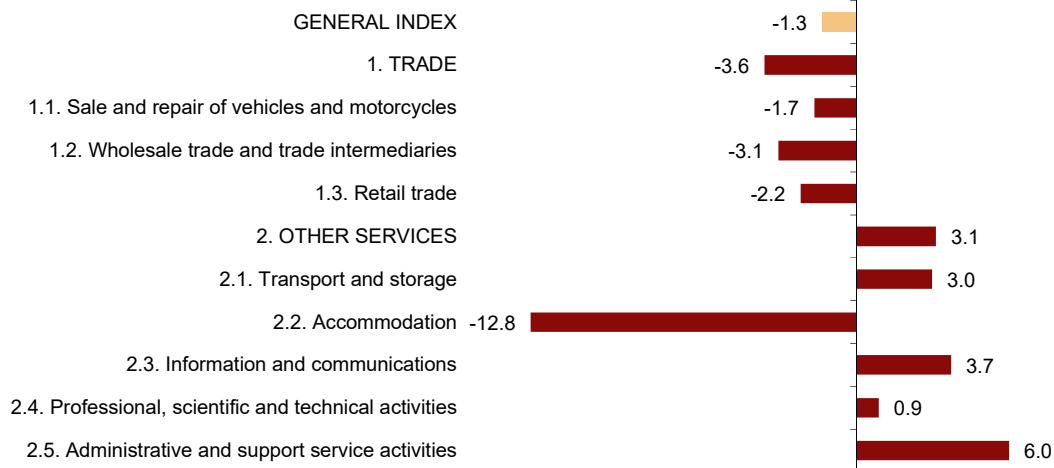
<sup>1</sup> As reflected in the methodology of this value index, the information is presented in current (nominal) terms, without adjusting the effects in the price variation.

After adjusting for seasonal and calendar effects, *Trade* decreased by 3.6% while *Other services* increased by 3.1%.

By sectors, *Administrative and support service activities* (6.0%) and *Information and communications* (3.7%) registered the largest increases. In turn, *Accommodation* (-12.8%) and *Wholesale trade and trade intermediaries* (-3.1%) recorded the largest decreases.

### General and by sectors turnover Index

Seasonally and calendar adjusted. November 2020. Monthly rate. Percentage



A more detailed analysis shows the branches of activity that registered the highest monthly rates and those with the highest decreases in the month of November.

### Types of activities with the highest monthly rates in the Services Sector turnover index

Seasonally and calendar adjusted. November 2020. Monthly rate

Activity (CNAE-2009 groups)	Monthly rate(%)
Motion picture, television programme production and music publishing activities	11.4
Computer programming, consultancy and related activities	7.1
Water transport	4.5

### Types of activities with the lowest monthly rates in the Services Sector turnover index

Seasonally and calendar adjusted. November 2020. Monthly rate

Activity (CNAE-2009 groups)	Monthly rate(%)
Food and beverage service activities	-18.6
Accommodation	-4.0
Publishing activities	-3.1

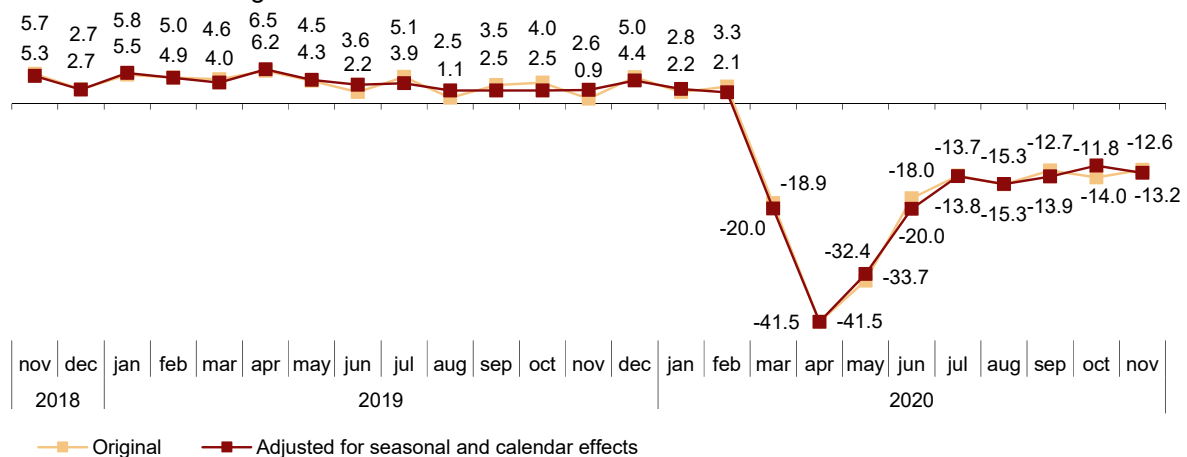
## Annual trend in the turnover indices for the Market Services Sector

The general index of the turnover for the Market Services Sector, after adjusting for seasonal and calendar effects, experienced a variation of  $-13.2\%$  in November compared to the same month of 2019. This rate is 1.4 points lower than that recorded in October.

The original series presented an annual variation of  $-12.6\%$ , which is 1.4 points above that registered in October.

### General index of turnover for the Market Services Sector

Annual Rate. Percentage



After adjusting for seasonal and calendar effects, *Trade* decreased by 10.1% as compared with November 2019 and *Other services* by 18.9%.

By sectors, *Information and communications* ( $-4.3\%$ ), *Professional, scientific and technical activities* ( $-4.6\%$ ) and *Retail trade* ( $-6.4\%$ ) registered the lowest decreases. In turn, *Accommodation* ( $-59.6\%$ ) and *Administrative and support service activities* ( $-28.9\%$ ) recorded the largest decreases.

### Annual rates in Turnover index for the Market Services Sector: General and by sector. November 2020

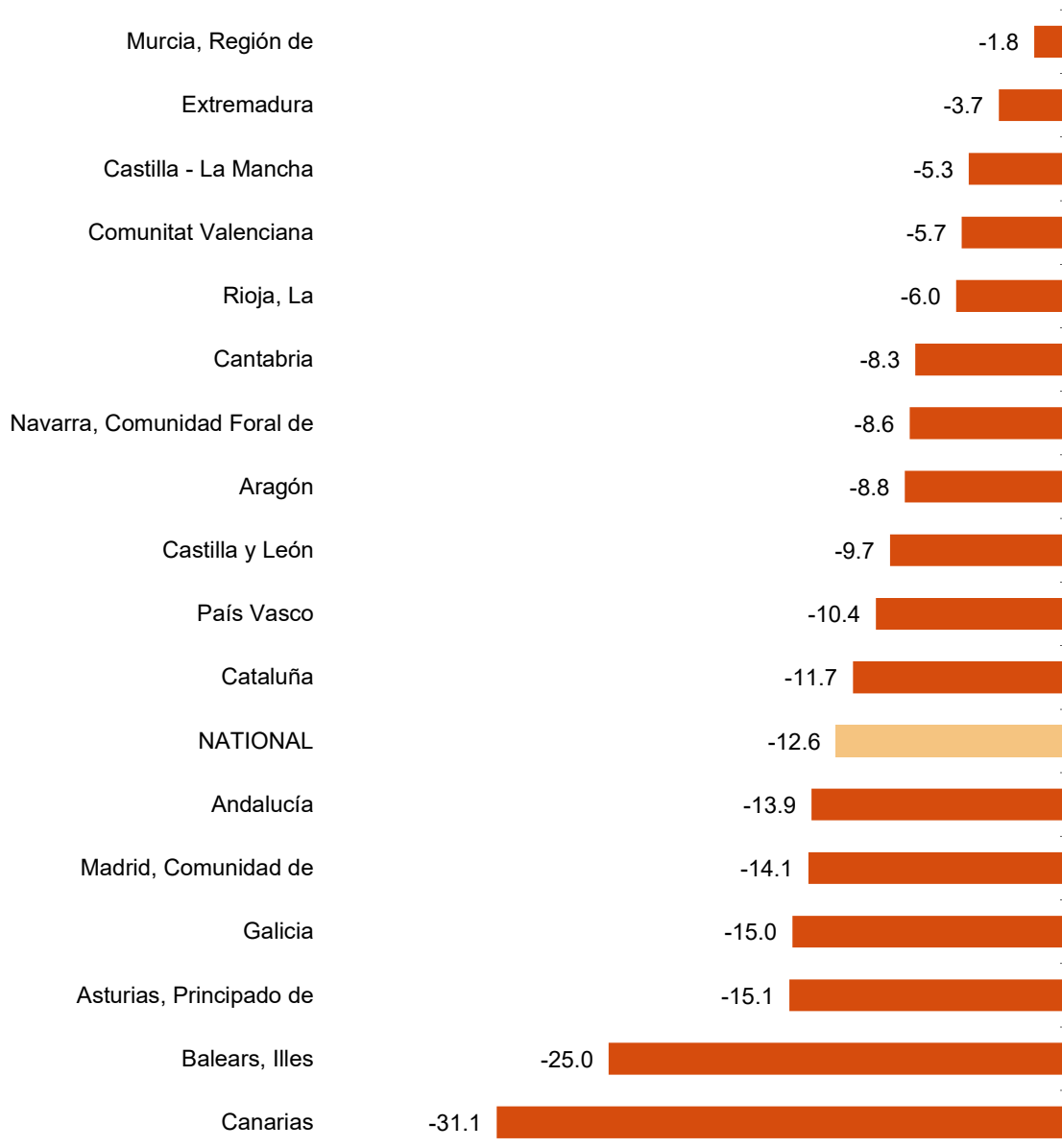
	Original index	Seasonally adjusted index
	Annual rate (%)	Annual rate (%)
<b>GENERAL INDEX</b>	-12.6	-13.2
<b>1. TRADE</b>	-9.4	-10.1
1.1. Sale and repair of vehicles and motorcycles	-12.7	-10.8
1.2. Wholesale trade	-9.8	-10.6
1.3. Retail trade	-7.3	-6.4
<b>2. OTHER SERVICES</b>	-18.6	-18.9
2.1. Transport and storage	-14.6	-15.2
2.2. Accommodation	-59.7	-59.6
2.3. Information and communications	-4.4	-4.3
2.4. Professional, scientific and technical activities	-4.1	-4.6
2.5. Administrative and support service activities	-28.5	-28.9

**Results by Autonomous Community. Annual variation rates of turnover. Original series**

Annual rate in Turnover index for the Market Services Sector decreased as compared to November 2019 in all the Autonomous Communities.

Canarias (-31.1%) and Illes Balears (-25.0%) were the ones that decreased the most, while Región de Murcia (-1.8%) and Extremadura (-3.7%) presented the smallest decreases.

**General Indices: National and by Autonomous Community**  
**November 2020.** Turnover Annual Rate. Percentage



## Employment trend

Employment in the Market Services Sector experienced a variation of  $-5.0\%$  in November as compared to the same month of the previous year. This rate is one tenth higher than that registered in October.

The employment rate decreased by  $2.7\%$  in *Trade* and by  $6.4\%$  in *Other services*.

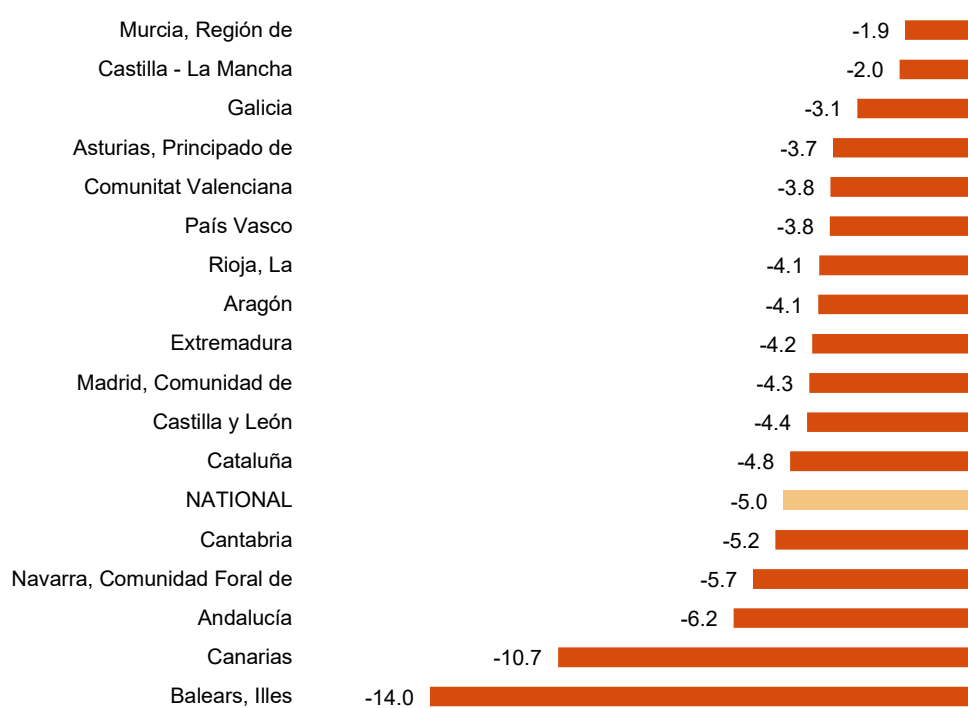
## National Indices of employed personnel by sector. November 2020

	Index	Rate (%)	
		Monthly	Annual
GENERAL INDEX	103.8	-0.7	-5.0
1. TRADE	105.2	0.3	-2.7
1.1. Sale and repair of vehicles and motorcycles	103.9	-0.2	-3.7
1.2. Wholesale trade	111.0	0.7	-1.2
1.3. Retail trade	101.7	0.1	-3.5
2. OTHER SERVICES	102.9	-1.3	-6.4
2.1. Transport and storage	106.6	0.0	-2.8
2.2. Accommodation	86.5	-6.2	-17.3
2.3. Information and communications	110.7	0.3	-0.5
2.4. Professional, scientific and technical activities	106.9	0.1	-2.0
2.5. Administrative and support service activities	112.4	0.6	-3.5

## Results by Autonomous Community. Annual employment variation rates

Annual employment rate decreased as compared to november 2019 in all the Autonomous Communities. Región de Murcia ( $-1.9\%$ ) recorded the lowest decrease.

## General Indices: National and by Autonomous Community November 2020. Annual rate of employed personnel. Percentage



## Review and update of data

On the press release day, INE has updated SSAI data series corresponding to the last five months. In the case of calendar adjusted and seasonally and calendar adjusted series, according to INE standard, series are revised since its beginning. Results are available on INEBase.

## Methodological note

The Services Sector Activity Indicators (SSAI) measure the short-term evolution of the activity of companies belonging to the Non-Financial Market Services sector through two variables: turnover and employed personnel. Turnover comprises the amounts invoiced by the company for provision of services and sale of goods. Employed personnel include both paid and unpaid personnel.

In order to obtain this data, an ongoing survey is conducted, every month researching more than 28,000 companies that operate in this sector. Results are presented as indices so as to measure variations as compared to the base year 2015.

The characteristics of this statistics are:

**Type of survey:** monthly continuous survey.

**Base year:** 2015.

**Population scope:** companies whose main economic activity is described in sections G, (Trade), H (Transport and Storage), I (Accommodation), J (Information and Communications), M (Professional, Scientific and Technical Activities) and N (Administrative and Support Services Activities) of the National Classification of Economic Activities (CNAE-09).

**Geographical scope:** all the national territory except for Ceuta and Melilla, for which it is only collected in division 47 of CNAE-09 (retail trade).

**Sample size:** 28,000 companies.

**Type of sampling:** stratified random sampling.

**Collection method:** completion of the questionnaire by the respondent using one of the following methods: internet (IRIA system), e-mail, fax, telephone or by postal mail.

For more information you can access the methodology at:

<https://www.ine.es/metodologia/t37/notaiass15.pdf>

And the standardised methodological report at:

<https://www.ine.es/dynt3/metadatos/es/RespuestaDatos.html?oe=30183>

INE statistics are produced in accordance with the Code of Good Practice for European Statistics, which is the basis for the institution's quality policy and strategy. For more information see the section on [Quality at INE and the Code of Best Practices](#) on the INE website.

---

For further information see INEbase: [www.ine.es/en/](http://www.ine.es/en/) Twitter: [@es\\_ine](https://twitter.com/es_ine)

All press releases at: [www.ine.es/en/prensa/prensa\\_en.htm](http://www.ine.es/en/prensa/prensa_en.htm)

**Press office:** Telephone numbers: (+34) 91 583 93 63 /94 08 – [gprensa@ine.es](mailto:gprensa@ine.es)

**Information Area:** Telephone number: (+34) 91 583 91 00 – [www.ine.es/infoine/?L=1](http://www.ine.es/infoine/?L=1)

---

## Services Sector Activity Indicators. Base 2015

November 2020

Provisional data

### 1. Turnover indices: General and by sector Seasonally and calendar adjusted

	Index	Rate (%)		
		Monthly	Annual	Year-to-date average
GENERAL INDEX	107.1	-1.3	-13.2	-16.1
1. TRADE	110.1	-3.6	-10.1	-12.6
1.1. Sale and repair of vehicles and motorcycles	117.8	-1.7	-10.8	-20.3
1.2. Wholesale trade	112.1	-3.1	-10.6	-12.9
1.3. Retail trade	104.7	-2.2	-6.4	-8.7
2. OTHER SERVICES	101.1	3.1	-18.9	-22.4
2.1. Transport and storage	104.1	3.0	-15.2	-19.7
2.2. Accommodation	48.9	-12.8	-59.6	-49.8
2.3. Information and communications	111.2	3.7	-4.3	-9.0
2.4. Professional, scientific and technical activities	131.7	0.9	-4.6	-11.4
2.5. Administrative and support service activities	91.3	6.0	-28.9	-30.1

### 2. Turnover indices: General and by sector Calendar adjusted

	Index	Rate (%)	
		Annual	Year-to-date average
GENERAL INDEX	106.7	-13.1	-16.4
1. TRADE	111.5	-10.1	-12.8
1.1. Sale and repair of vehicles and motorcycles	122.3	-11.0	-21.0
1.2. Wholesale trade	112.9	-10.7	-13.1
1.3. Retail trade	105.4	-6.6	-8.7
2. OTHER SERVICES	97.9	-18.9	-23.0
2.1. Transport and storage	102.4	-15.2	-20.1
2.2. Accommodation	41.5	-59.6	-51.4
2.3. Information and communications	112.2	-4.7	-9.1
2.4. Professional, scientific and technical activities	135.1	-4.5	-11.8
2.5. Administrative and support service activities	83.9	-28.8	-31.3

### 3. Turnover indices: General and by branch of activity

#### Original series

	Index	Rate (%)	
		Annual	Year-to-date average
<b>GENERAL INDEX</b>	106.4	-12.6	-16.2
<b>1. TRADE</b>	111.1	-9.4	-12.6
<b>1.1. SALE AND REPAIR OF VEHICLES</b>	120.8	-12.7	-20.7
- Sale of motor vehicles	122.7	-13.1	-21.2
- Maintenance and repair of motor vehicles	108.6	-9.7	-17.1
<b>1.2. WHOLESALE TRADE AND COMMISSION TRADE</b>	112.5	-9.8	-13.0
- Wholesale on a fee or contract basis	120.7	-8.3	-11.6
- Wholesale of agricultural raw materials and live animals	122.2	-2.9	0.3
- Wholesale of food, beverages and tobacco	102.0	-11.9	-10.0
- Wholesale of household goods	121.2	-3.1	-7.9
- Wholesale of information and communication equipment	147.1	11.8	3.4
- Wholesale of other machinery, equipment and supplies	143.7	-4.0	-6.5
- Other specialised w holesale trade	97.8	-21.0	-25.8
- Non-specialised w holesale trade	161.9	-4.9	-10.4
<b>1.3. RETAIL TRADE</b>	105.0	-7.3	-8.6
<b>2. OTHER SERVICES</b>	97.7	-18.6	-22.9
<b>2.1. TRANSPORTATION AND STORAGE SERVICES</b>	102.1	-14.6	-20.0
Land transport	103.4	-11.8	-18.1
- Rail transport	58.7	-45.5	-41.4
- Taxi operation	44.8	-57.6	-53.5
- Other passenger land transport	67.0	-42.0	-45.1
- Freight transport by road and removal services	121.7	1.9	-6.7
Water transport	89.4	-22.4	-22.2
Air transport	35.1	-70.1	-60.2
Warehousing and support activities for transportation	112.5	-7.7	-13.6
Post and courier activities	141.2	10.4	-1.1
<b>2.2. ACCOMMODATION AND FOOD SERVICES ACTIVITIES</b>	41.5	-59.7	-51.3
Accommodation	17.4	-79.9	-67.4
Food and beverage service activities	53.0	-52.3	-43.4
<b>2.3. INFORMATION AND COMMUNICATION</b>	111.8	-4.4	-8.9
Publishing activities	104.0	-6.6	-11.3
Motion picture, television programme production and music publishing activities	93.7	-26.8	-34.7
Programming and broadcasting activities	123.6	-4.6	-9.9
Telecommunications	107.3	1.2	-1.6
Computer programming, consultancy and related activities	119.4	-5.1	-11.0
Information service activities	129.0	-2.4	-3.7
<b>2.4. PROFESSIONAL, SCIENTIFIC AND TECHNICAL ACTIVITIES</b>	134.6	-4.1	-11.7
Legal, accounting and management consulting activities	134.4	-5.0	-10.6
Architectural and engineering activities; technical testing and analysis	135.7	-2.7	-7.7
Advertising and market research	137.7	-3.1	-19.1
Other professional scientific and technical activities	119.3	-10.4	-12.4
<b>2.5. ADMINISTRATIVE AND SUPPORT SERVICE ACTIVITIES</b>	83.8	-28.5	-31.1
Employment activities	143.6	-3.8	-17.2
Travel agencies and tour operator services	12.0	-87.0	-74.5
Security and investigation activities	132.4	-1.3	0.1
Cleaning activities	122.8	1.9	-1.5
Office administrative and other business support activities	123.4	-14.4	-14.3



### 4. Employed personnel indices: General and by branch of activity

	Index	Rate (%)		
		Monthly	Annual	Year-to-date average
<b>GENERAL INDEX</b>	103.8	-0.7	-5.0	-4.3
<b>1. TRADE</b>	105.2	0.3	-2.7	-1.9
<b>1.1. SALE AND REPAIR OF VEHICLES</b>	103.9	-0.2	-3.7	-2.8
- Sale of motor vehicles	110.6	-0.3	-3.3	-2.2
- Maintenance and repair of motor vehicles	97.0	-0.1	-4.2	-3.5
<b>1.2. WHOLESALE TRADE AND COMMISSION TRADE</b>	111.0	0.7	-1.2	-1.0
- Wholesale on a fee or contract basis	105.3	0.4	-2.2	-0.8
- Wholesale of agricultural raw materials and live animals	110.3	0.0	2.3	0.6
- Wholesale of food, beverages and tobacco	119.0	1.7	-0.1	-0.8
- Wholesale of household goods	104.3	0.1	-2.9	-2.2
- Wholesale of information and communication equipment	108.9	0.4	-0.4	-1.1
- Wholesale of other machinery, equipment and supplies	111.8	0.2	-1.8	-0.5
- Other specialised w wholesale trade	107.3	0.1	-1.5	-0.3
- Non-specialised w wholesale trade	108.2	-1.2	-2.2	-2.5
<b>1.3. RETAIL TRADE</b>	101.7	0.1	-3.5	-2.3
<b>2. OTHER SERVICES</b>	102.9	-1.3	-6.4	-5.8
<b>2.1. TRANSPORTATION AND STORAGE SERVICES</b>	106.6	0.0	-2.8	-3.0
Land transport	104.6	0.3	-3.2	-3.4
- Rail transport	108.1	0.0	-0.3	1.5
- Taxi operation	92.3	-1.9	-8.4	-6.9
- Other passenger land transport	103.1	-0.5	-7.2	-5.6
- Freight transport by road and removal services	107.7	1.1	-0.9	-2.2
Water transport	104.7	-9.3	-8.2	-9.6
Air transport	107.5	-1.4	-5.9	-4.2
Warehousing and support activities for transportation	111.5	-0.7	-1.9	-2.5
Post and courier activities	105.3	1.5	-1.2	-1.2
<b>2.2. ACCOMMODATION AND FOOD SERVICES ACTIVITIES</b>	86.5	-6.2	-17.3	-12.9
Accommodation	73.6	-14.4	-25.4	-19.6
Food and beverage service activities	89.8	-4.2	-15.3	-11.1
<b>2.3. INFORMATION AND COMMUNICATION</b>	110.7	0.3	-0.5	-0.3
Publishing activities	96.3	-0.2	-4.4	-2.5
Motion picture, television programme production and music publishing activities	105.8	0.8	-5.5	-8.1
Programming and broadcasting activities	99.3	-0.6	-2.0	-1.8
Telecommunications	90.5	0.2	0.4	-0.6
Computer programming, consultancy and related activities	121.6	0.5	0.7	1.3
Information service activities	105.7	0.2	0.3	0.4
<b>2.4. PROFESSIONAL, SCIENTIFIC AND TECHNICAL ACTIVITIES</b>	106.9	0.1	-2.0	-1.5
Legal, accounting and management consulting activities	104.3	-0.3	-1.6	-1.6
Architectural and engineering activities; technical testing and analysis	114.9	0.6	-0.6	-0.2
Advertising and market research	100.2	0.1	-6.4	-4.4
Other professional scientific and technical activities	105.1	-0.3	-2.4	-1.6
<b>2.5. ADMINISTRATIVE AND SUPPORT SERVICE ACTIVITIES</b>	112.4	0.6	-3.5	-5.2
Employment activities	123.7	4.9	-7.9	-15.9
Travel agencies and tour operator services	91.9	-3.2	-12.4	-8.1
Security and investigation activities	116.3	-0.4	-2.5	-0.6
Cleaning activities	107.6	-0.7	0.1	-1.1
Office administrative and other business support activities	114.1	0.1	-3.9	-4.4

## 5. Turnover indices: National and by Autonomous Community

	Index	Rate (%)	
		Annual	Year-to-date average
NATIONAL	106.4	-12.6	-16.2
Andalucía	101.3	-13.9	-14.1
Aragón	111.8	-8.8	-11.8
Asturias, Principado de	98.1	-15.1	-12.5
Balears, Illes	70.0	-25.0	-38.7
Canarias	83.5	-31.1	-30.2
Cantabria	114.1	-8.3	-12.0
Castilla y León	102.5	-9.7	-11.2
Castilla-La Mancha	118.0	-5.3	-10.5
Cataluña	104.4	-11.7	-16.4
Comunitat Valenciana	113.9	-5.7	-11.8
Extremadura	118.6	-3.7	-5.8
Galicia	107.1	-15.0	-14.1
Madrid, Comunidad de	110.8	-14.1	-18.9
Murcia, Región de	118.5	-1.8	-2.6
Navarra, Comunidad Foral de	111.3	-8.6	-10.8
País Vasco	111.2	-10.4	-13.1
Rioja, La	118.9	-6.0	-10.1

## 6. Employed personnel indices: National and by Autonomous Community

	Index	Rate (%)		
		Monthly	Annual	Year-to-date average
NATIONAL	103.8	-0.7	-5.0	-4.3
Andalucía	100.5	-1.1	-6.2	-4.8
Aragón	106.2	-0.6	-4.1	-3.7
Asturias, Principado de	101.4	-1.7	-3.7	-3.0
Balears, Illes	86.0	-10.8	-14.0	-15.0
Canarias	98.5	-0.5	-10.7	-7.1
Cantabria	103.3	-1.8	-5.2	-4.7
Castilla y León	100.8	-0.8	-4.4	-3.9
Castilla-La Mancha	105.1	-0.1	-2.0	-3.0
Cataluña	105.0	-0.5	-4.8	-4.3
Comunitat Valenciana	108.8	0.5	-3.8	-3.4
Extremadura	102.8	-0.1	-4.2	-3.8
Galicia	105.0	-0.6	-3.1	-3.5
Madrid, Comunidad de	105.6	0.0	-4.3	-3.3
Murcia, Región de	110.8	-0.2	-1.9	-1.4
Navarra, Comunidad Foral de	104.4	-0.9	-5.7	-4.8
País Vasco	103.0	-0.3	-3.8	-3.1
Rioja, La	105.4	-0.5	-4.1	-3.5