

10 September 2012

Harmonised Labour Cost Index (HLCI). Base 2008
Second quarter of 2012. Provisional data

The cost per hour worked increases 0.7% in the second quarter of 2012, with regard to the same period of 2011

The variation stands at –0.3% after adjusting for calendar and seasonal effects

The cost per hour worked increased 0.7% in the second quarter of 2012, as compared with the same period the previous year. The interannual rate stood at 0.5% after adjusting for calendar and seasonal effects.

National index

Total and by activity section

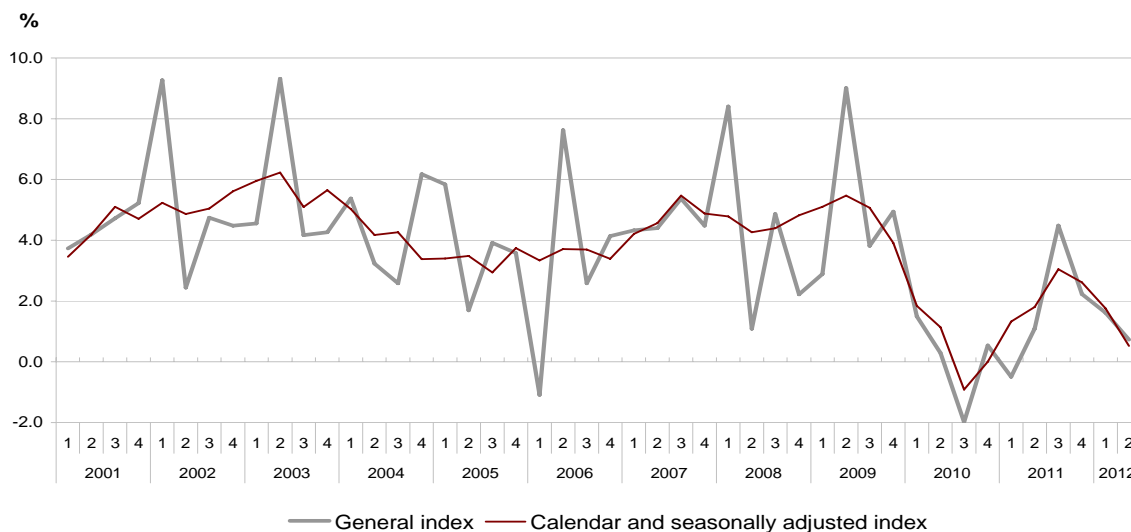
	General index		Index seasonally adjusted and adjusted for calendar effects	
	Index ²	Rate ¹	Index ²	Rate ¹
TOTAL	106.8	0.7	108.3	0.5
B. Extractive industries	136.1	17.9	128.5	17.3
C. Manufacturing industry	107.7	3.4	110.6	2.8
D. Supply of electrical energy, gas, steam and air conditioning	113.0	0.6	108.9	1.1
E. Water supply, waste management and decontamination activities	105.7	-0.2	106.4	0.2
F. Construction	114.4	4.2	113.6	3.9
G. Wholesale and retail trade, repair of motor vehicles and motorcycles	109.1	-0.9	111.7	-0.8
H. Transport and storage	106.7	0.6	106.6	-0.1
I. Accommodation	105.2	-0.4	107.8	-0.4
J. Information and communications	103.2	3.0	107.3	2.6
K. Financial and insurance activities	101.5	-2.6	111.5	-1.2
L. Real estate activities	100.6	-2.0	102.9	-1.6
M. Professional, scientific and technical activities	104.0	-0.3	106.9	-0.5
N. Administrative and support service activities	103.0	1.7	105.4	1.6
O. Public Administration and Defence; Compulsory Social Security	108.0	1.5	103.7	1.9
P. Education	102.2	0.7	103.5	0.7
Q. Health activities and social services	102.8	-3.4	99.6	-3.4
R. Arts, recreation and entertainment activities	101.5	-1.9	102.8	-1.2
S. Other services	110.6	2.3	111.5	2.1

On the other hand, the provisional data for the Harmonised Labour Cost Index corresponding to the first quarter of 2012 was reviewed, with the final index standing at 99.4 in terms of gross data. Adjusted for calendar and seasonal effects, the growth rate stood at 1.6%.

Annual variations

General index, calendar and seasonally adjusted index

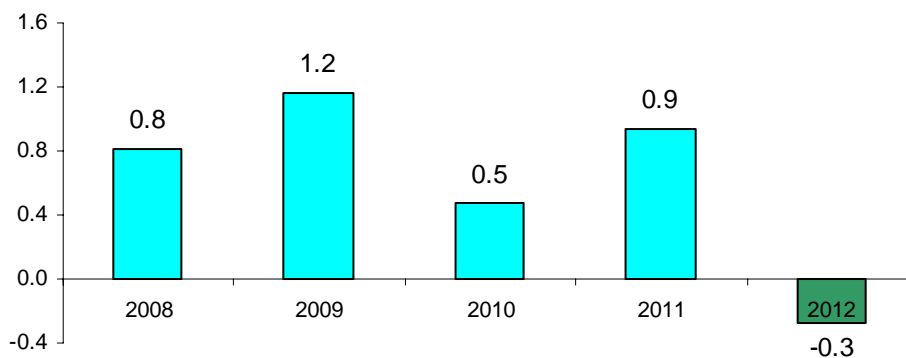
10 September 2012



Evolution of the quarterly rate ¹

The variation in the second quarter, as compared with the first quarter of 2012, for the calendar and seasonally adjusted series, registered this quarter a variation of -0.3%. This rate was lower than that registered the previous years.

Evolution of the quarterly rate for the calendar and seasonally adjusted series (variation in the second quarter, as compared with the first quarter)



The data from the Harmonised Labour Cost Index (HLCI) is sent each quarter to the Statistical Office of the European Communities (Eurostat) for its subsequent publication by this body, thus complying with the statistical requirement established in the action plan of the European Monetary Union.

For further information see INEbase-www.ine.es/en/

All press releases at: www.ine.es/en/prensa/prensa_en.htm

Press Office: Telephone numbers: 91 583 93 63 / 94 08 – Fax: 91 583 90 87 - gprensa@ine.es

Information Area: Telephone number: 91 583 91 00 – Fax: 91 583 91 58 – www.ine.es/infoine/?L=1

¹ To contribute to the analysis and interpretation of data, this section has been added to the evolution of the HLCI quarterly rate in the second quarter of previous years.