

10 September 2013

**Harmonised Labour Cost Index (HLCI). Base 2008**  
Second quarter of 2013. *Provisional data*

**The cost per hour worked decreases 2.4% in the second quarter of 2013, as compared to the same period of 2012**

**After adjusting for calendar and seasonal effects, the annual variation is –0.3%**

The cost per hour worked decreased 2.4% in the second quarter of 2013, as compared with the same period of the previous year, due to a greater number of hours worked since Easter was mainly celebrated during the first quarter. After adjusting the calendar and seasonal effects, the cost per hour worked decreased 0.3%.

In turn, the provisional data for the Harmonised Labour Cost Index corresponding to the first quarter of 2013 was reviewed, with the final index standing at 101.6 points. Adjusted for calendar and seasonal effects, the growth rate stood at –0.5%.

**Evolution of the Harmonised Labour Cost Index in the second quarter of 2013, by activity section**

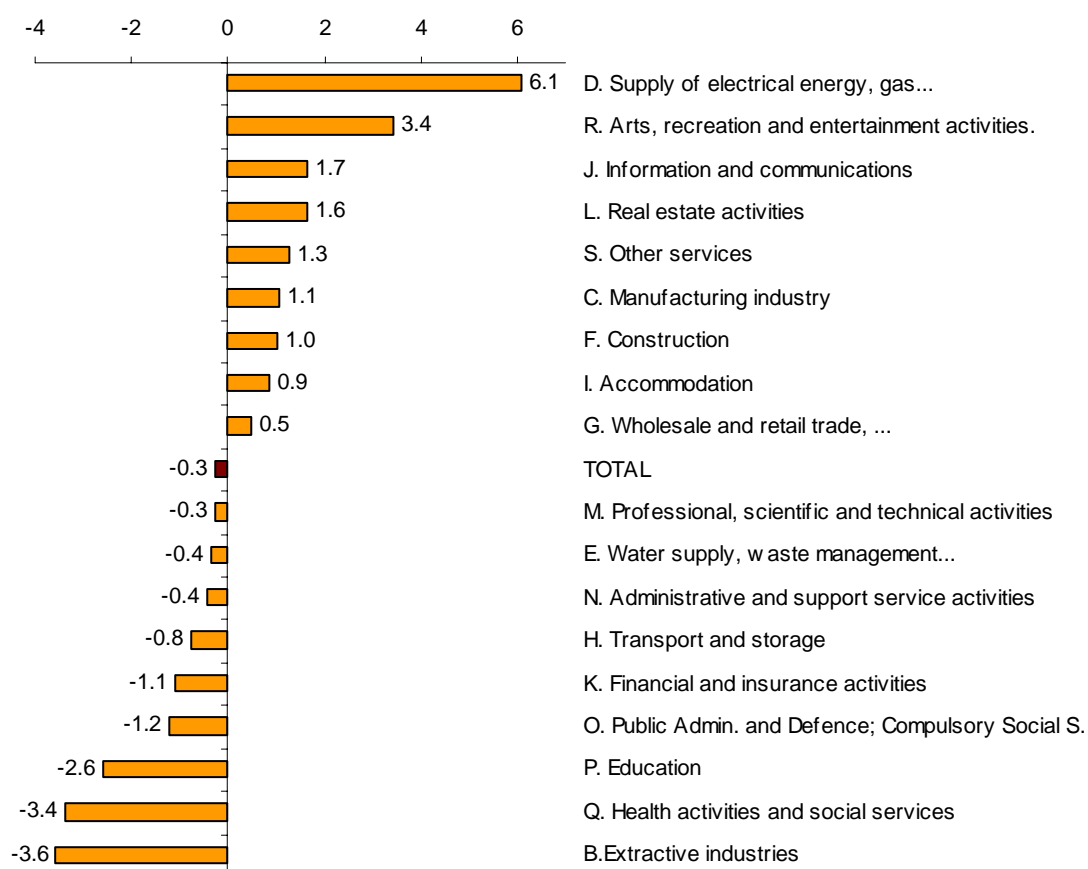
|   | General index  |      | Index adjusted for calendar and seasonal effects |      |
|---|----------------|------|--|------|
|   | Base year 2008 |      |  |      |
|   | Index          | Rate | Index  | Rate |
| TOTAL ACTIVITIES (Quarter-on-quarter rate)                              | 104.3          | 2.7  | 107.3  | -0.1 |
| TOTAL ACTIVITIES (Interannual rate)                                     | 104.3          | -2.4 | 107.3  | -0.3 |
| <b>INTERANNUAL DATA BY ACTIVITY SECTION</b>                             |                |      |  |      |
| B. Extractive industries  | 126.8          | -6.8 | 131.6  | -3.6 |
| C. Manufacturing industry   | 106.8          | -0.9 | 111.7  | 1.1  |
| D. Supply of electrical energy, gas, steam and air conditioning         | 118.1          | 4.5  | 117.8  | 6.1  |
| E. Water supply, waste management and decontamination activities        | 103.0          | -2.5 | 106.0  | -0.4 |
| F. Construction   | 113.4          | -1.1 | 114.1  | 1.0  |
| G. Wholesale and retail trade, repair of motor vehicles and motorcycles | 107.3          | -1.6 | 111.3  | 0.5  |
| H. Transport and storage  | 103.1          | -3.3 | 106.1  | -0.8 |
| I. Accommodation  | 105.1          | -0.2 | 108.5  | 0.9  |
| J. Information and communications                                       | 102.8          | -0.3 | 108.3  | 1.7  |
| K. Financial and insurance activities                                   | 97.6           | -3.8 | 109.7  | -1.1 |
| L. Real estate activities   | 101.1          | 0.5  | 106.0  | 1.6  |
| M. Professional, scientific and technical activities                    | 101.5          | -2.4 | 107.5  | -0.3 |
| N. Administrative and support service activities                        | 101.0          | -1.9 | 104.9  | -0.4 |
| O. Public Administration and Defence; Compulsory Social Security        | 103.9          | -3.7 | 102.3  | -1.2 |
| P. Education  | 98.3           | -4.7 | 100.3  | -2.6 |
| Q. Health activities and social services                                | 97.0           | -5.6 | 96.8   | -3.4 |
| R. Arts, recreation and entertainment activities                        | 102.2          | 0.7  | 107.9  | 3.4  |
| S. Other services   | 110.1          | -0.3 | 112.8  | 1.3  |

## Results, by activity section

By sections of economic activities, in the second quarter of 2013 those with the greatest growth were *Supply of electrical energy, gas, steam and air conditioning* (4.5%) and *Arts, entertainment and recreation* (0.7%).

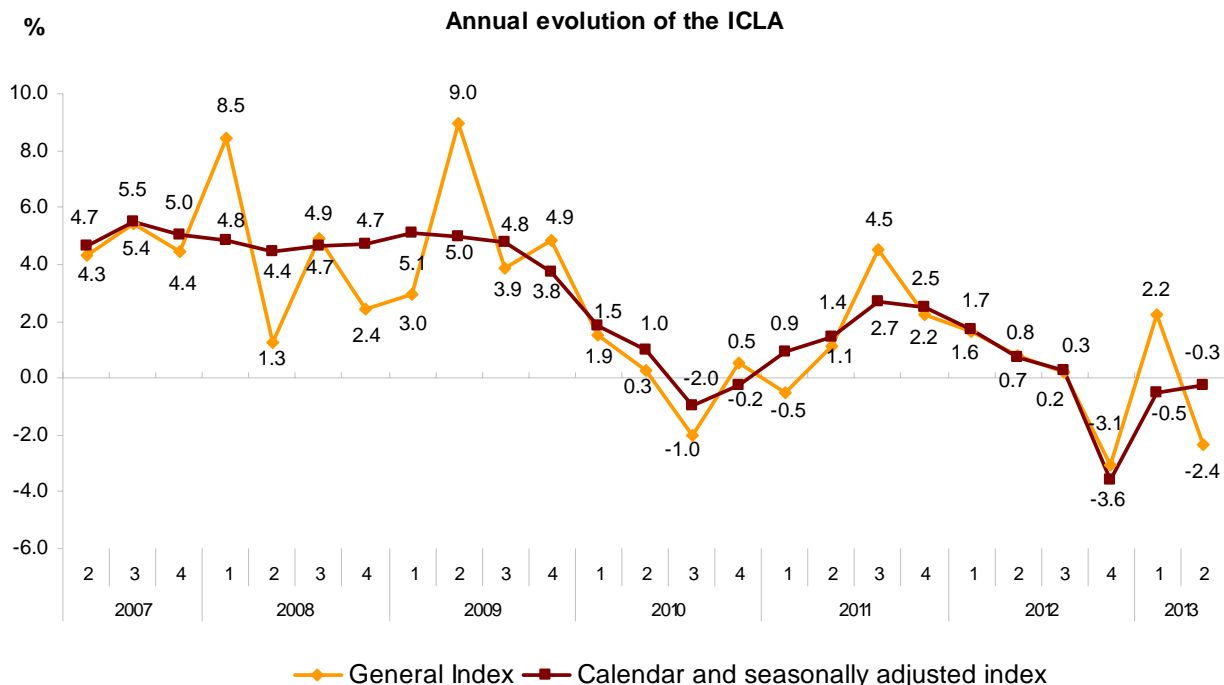
Conversely, *Extractive industries* (–6.8%) and *Human health and Social work activities* (–5.6%) registered the greatest decreases.

Interannual rate (2Q2013 as compared with 2Q2012) of the index adjusted for the seasonal and calendar effects, by activity section of the CNAE-09



## Evolution of the index

The HLCI adjusted for calendar and seasonal effects, decreased 0.3%.



## Evolution of the quarterly rate

The variation in the second quarter of 2013, as compared with the first quarter of 2013, for the calendar and seasonally adjusted series, decreased 0.1%.

