

Harmonised Labour Cost Index (HLCI). Base 2008
Third quarter of 2009. *Provisional data*

The cost per hour worked increases 3.9% in the third quarter of 2009 with respect to the same period of 2008

The increase stands at 4.9% if adjusted for calendar and seasonal effects

The cost per hour worked increased 3.9% in the third quarter as compared with the same period of 2008. After adjusting for seasonal and calendar effects, the interannual rate stood at 4.9%.

National index

Total and by activity section

	General index		Index seasonally adjusted and adjusted for calendar effects	
	Index ²	Rate ¹	Index ²	Rate ¹
TOTAL	108.9	3.9	105.5	4.9
B. Extractive industries	111.0	5.1	106.3	6.3
C. Manufacturing industry	112.8	4.5	106.7	6.0
D. Supply of electrical energy, gas, steam and air conditioning	107.4	11.3	109.3	10.9
E. Water supply, waste management and decontamination activities	103.4	1.0	102.3	1.9
F. Construction	107.2	3.4	104.5	4.1
G. Wholesale and retail trade, repair of motor vehicles and motorcycles	111.3	6.4	108.5	7.2
H. Transport and storage	105.5	1.6	103.6	2.2
I. Accommodation	100.7	0.0	100.8	0.3
J. Information and communications	111.8	2.5	104.0	3.1
K. Financial and insurance activities	105.7	6.2	104.6	5.1
L. Real estate activities	98.0	-6.1	96.3	-5.7
M. Professional, scientific and technical activities	113.6	6.2	106.7	7.1
N. Administrative and support service activities	104.2	0.2	101.5	0.7
O. Public Administration and Defence; Compulsory Social Security	102.0	0.1	... ⁽³⁾	... ⁽³⁾
P. Education	131.1	11.7	110.0	10.0
Q. Health activities and social services	109.5	4.3	105.3	5.1
R. Arts, recreation and entertainment activities	100.3	1.7	103.8	2.8
S. Other services	109.2	3.0	103.9	3.5

¹ Same quarter from the previous year

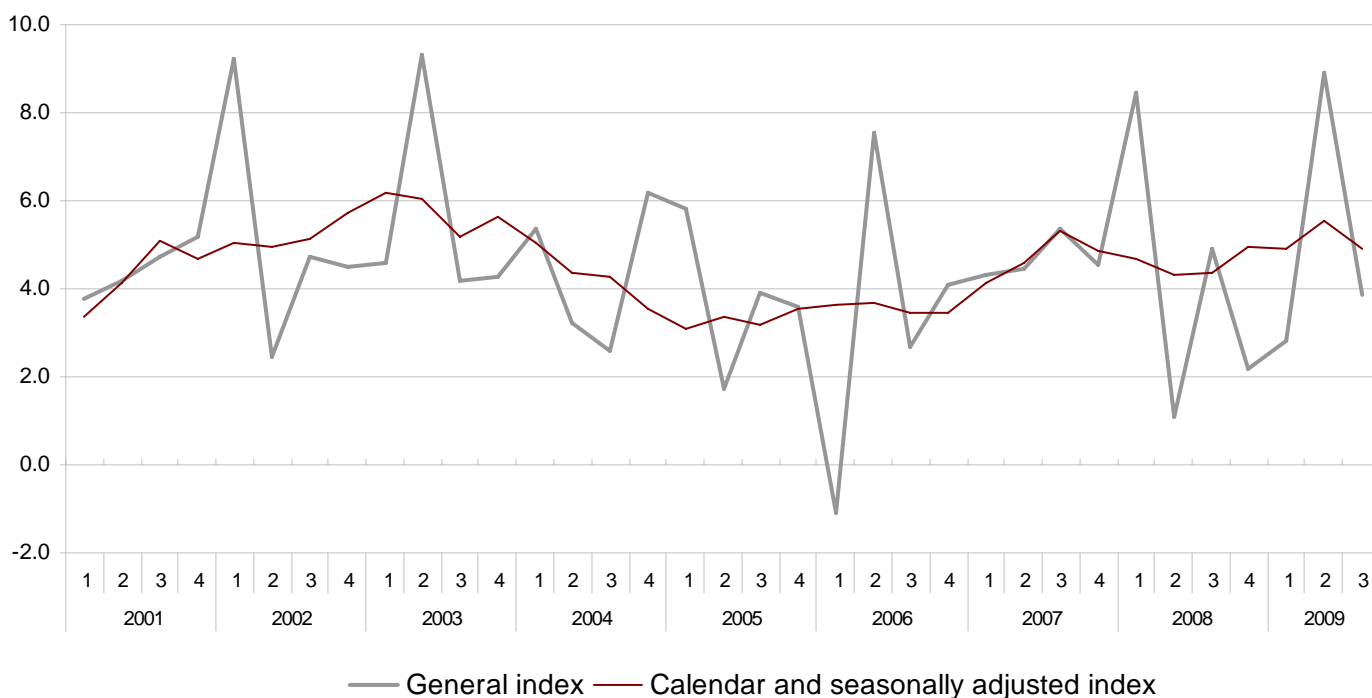
² Base year 2008

³ Series adjusted for seasonal and calendar effects cannot be obtained until 2010

The data from the Harmonised Labour Cost Index (HLCI) is sent every quarter to the Statistical Office of the European Communities (Eurostat) for its subsequent publication by this body, thus complying with the statistical requirement established in the action plan of the European Monetary Union.

Annual variations

General index, calendar and seasonally adjusted index
%



Adaptation to NCEA-2009

The process of implementing NCEA-2009 will not be completed until the end of this year, and therefore, **the data provided by these statistics will be of a provisional nature during the four quarters of the current year.**

For further information see **INEbase-www.ine.es** All press releases at: **www.ine.es/prensa/prensa_en.htm**

Press office: Telephone numbers: 91 583 93 63 / 94 08 – Fax: 91 583 90 87 - gprensa@ine.es

Information Area: Telephone number: 91 583 91 00 – Fax: 91 583 91 58 – www.ine.es/infoine