

Harmonised Labour Cost Index (HLCI). Base 2008
Third quarter of 2012. Provisional data

The cost per hour worked increases 0.2% in the third quarter of 2012, with regard to the same period of 2011

The variation stands at 0.4% after adjusting for calendar and seasonal effects

The cost per hour worked increased 0.2% in the third quarter of 2012, as compared with the same period the previous year. The interannual rate stood at 0.6% after adjusting for calendar and seasonal effects.

On the other hand, the provisional data for the Harmonised Labour Cost Index corresponding to the second quarter of 2012 was reviewed, with the final index standing at 106.8 in terms of gross data. Adjusted for calendar and seasonal effects, the growth rate stood at 0.6%.

Total and by activity section

	General index		Index seasonally adjusted and adjusted for calendar effects	
	Index ²	Rate ¹	Index ²	Rate ¹
TOTAL ACTIVITIES (Quarter-on-quarter rate)	111.7	4.6	108.0	0.4
TOTAL ACTIVITIES (Interannual rate)	111.7	0.2	108.0	0.6
INTERANNUAL DATA BY ACTIVITY SECTION				
B. Extractive industries	127.1	8.4	126.8	10.5
C. Manufacturing industry	118.2	2.1	111.1	2.4
D. Supply of electrical energy, gas, steam and air conditioning	110.7	6.2	114.2	6.7
E. Water supply, waste management and decontamination activities	109.3	-0.1	107.6	0.0
F. Construction	112.5	1.6	113.7	2.7
G. Wholesale and retail trade, repair of motor vehicles and motorcycles	113.5	-1.7	111.1	-1.4
H. Transport and storage	108.2	2.2	106.7	2.4
I. Accommodation	106.5	-1.3	107.3	-1.0
J. Information and communications	113.5	0.0	106.3	0.7
K. Financial and insurance activities	115.3	-0.1	112.7	0.8
L. Real estate activities	107.5	-2.9	104.8	-2.8
M. Professional, scientific and technical activities	117.1	4.1	109.9	4.6
N. Administrative and support service activities	108.5	-1.2	105.2	-0.9
O. Public Administration and Defence; Compulsory Social Security	103.7	0.6	103.4	0.8
P. Education	119.9	-2.3	103.0	-1.3
Q. Health activities and social services	105.1	-2.7	100.6	-2.5
R. Arts, recreation and entertainment activities	108.5	1.8	105.0	0.3
S. Other services	116.7	3.0	111.7	3.3

¹ Same quarter from the previous year

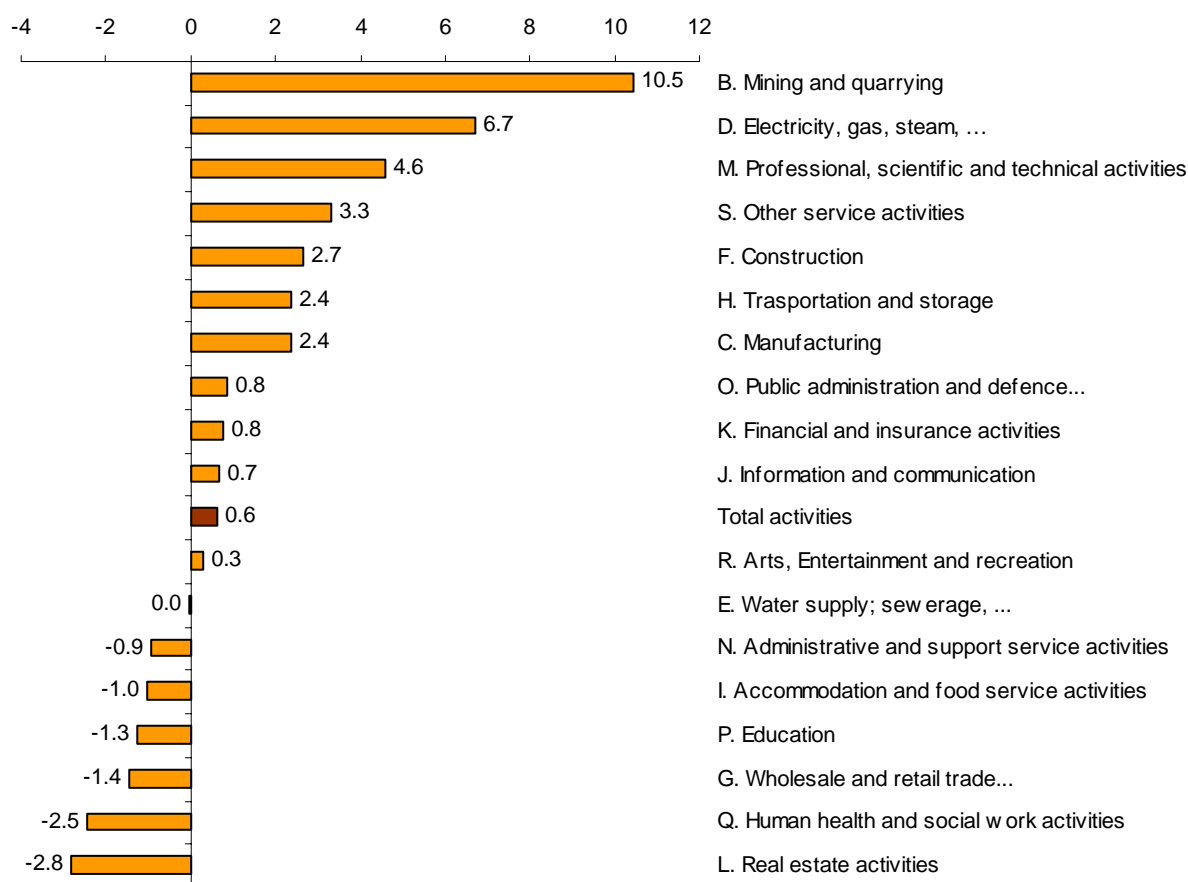
² Base year 2008

The index variation by activity sections was uneven. Of the eighteen activity sections investigated, twelve presented positive annual variation and six negative.

The economic activity with the greatest growth was the Section B of the CNAE-09, Mining and quarrying with a growth of 10.5%, followed by the Section D, Electricity, gas, steam and air conditioning supply with 6.7%.

Conversely, the Section L, Real estate activities and Section Q, Human health and social work activities, presented the greatest decreases (–2.8% and –2.5%, respectively).

Annual rate of index for the calendar and seasonally adjusted series by activity sections of CNAE-09

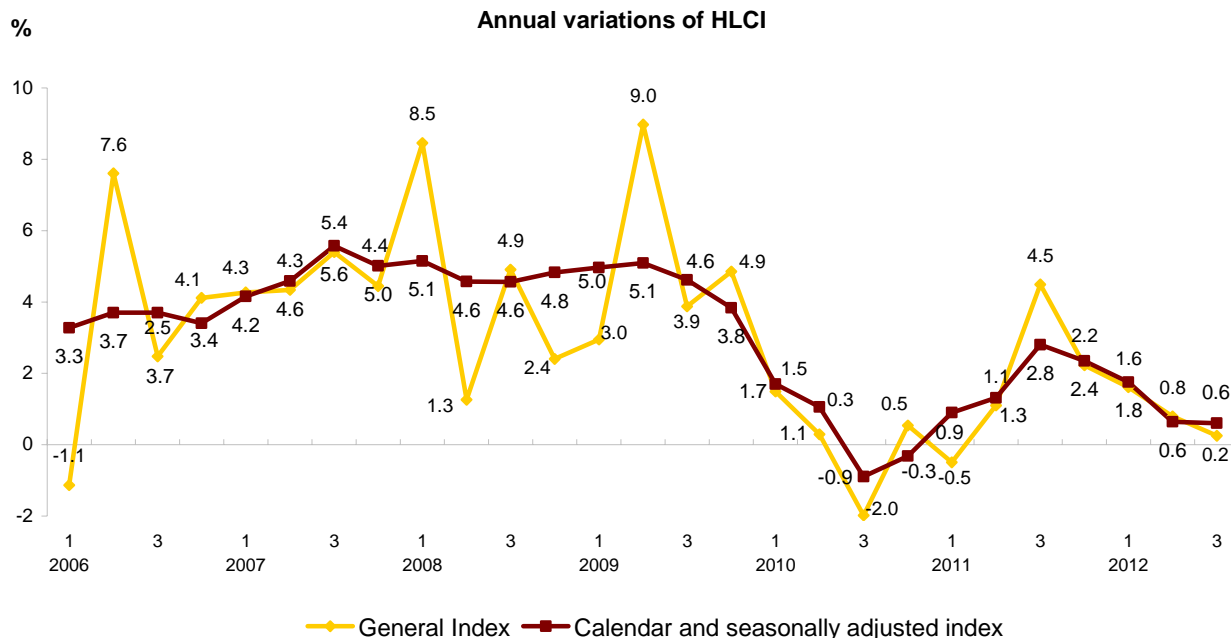


Evolution of the rate

The index adjusted for calendar and seasonal effects, remained the same interannual variation as compared with the previous quarter (0.6%).

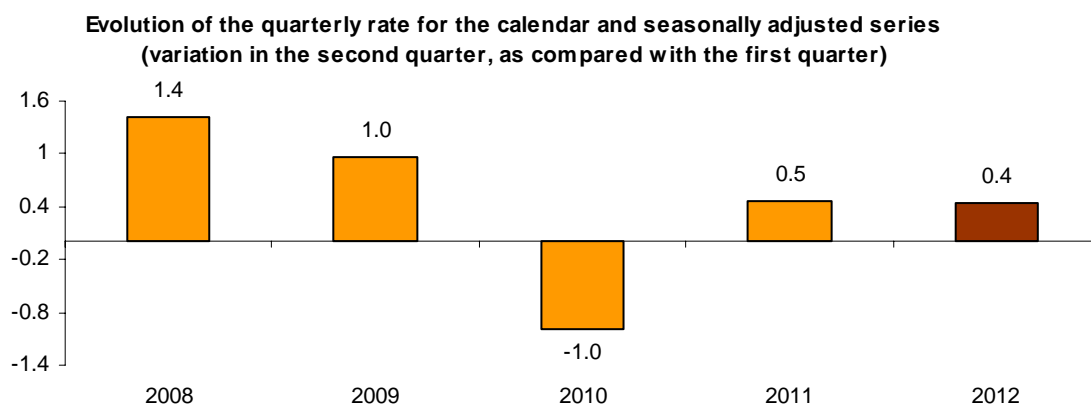
Annual variations

General index, calendar and seasonally adjusted index



Evolution of the quarterly rate ¹

The variation in the third quarter, as compared with the second quarter of 2012, for the calendar and seasonally adjusted series, registered this quarter a variation of 0.4%.



¹ To contribute to the analysis and interpretation of data, this section has been added to the evolution of the HLCI quarterly rate in the second quarter of previous years.

The data from the Harmonised Labour Cost Index (HLCI) is sent each quarter to the Statistical Office of the European Communities (Eurostat) for its subsequent publication by this body, thus complying with the statistical requirement established in the action plan of the European Monetary Union.

For further information see **INEbase**-www.ine.es/en/

All press releases at: www.ine.es/en/prensa/prensa_en.htm

Press Office: Telephone numbers: 91 583 93 63 / 94 08 – Fax: 91 583 90 87 - gprensa@ine.es

Information Area: Telephone number: 91 583 91 00 – Fax: 91 583 91 58 – www.ine.es/infoine/?L=1
