

Harmonised Labour Cost Index (HLCI). Base 2016
Third quarter 2022. Provisional data

The quarterly variation of the cost per hour worked is 0.5%, after adjusting for seasonal and calendar effects

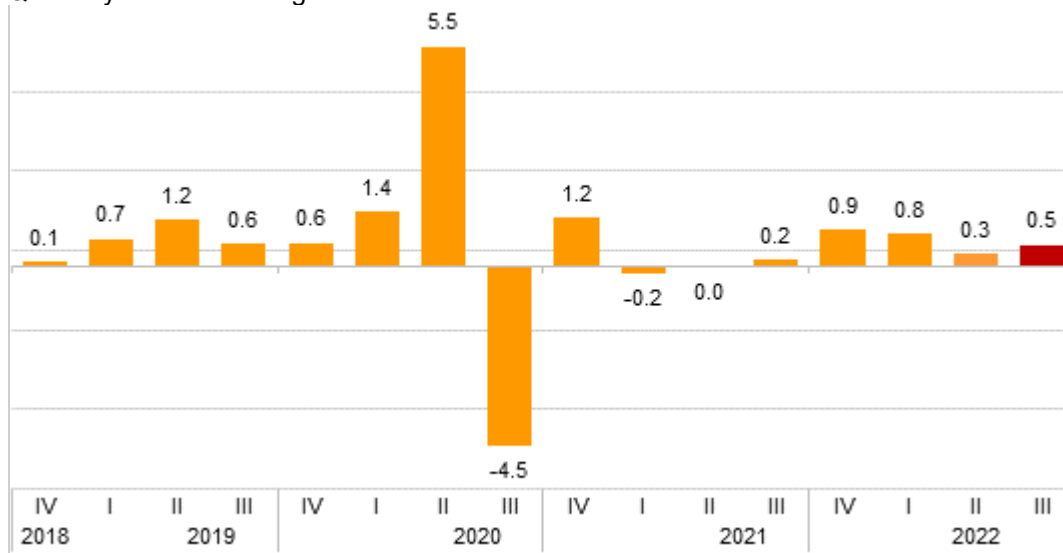
The cost per hour worked increases 2.7% in the annual rate in the series adjusted for calendar and seasonal effects, and 3.5% in the original series

Quarterly variation of the Index

The quarterly variation of the HLCI—which measures the labour cost per hour worked maintaining the structure by branches of activity—between the third and the second quarter of 2022, after adjusting for seasonal and calendar effects, was 0.5%.

Labour Cost Index adjusted for seasonal and calendar effects

Quarterly rate. Percentage



By cost component, in seasonally and calendar adjusted data, wage costs showed a variation of 0.7%, and other costs of 0.1%.

After adjusting for seasonal and calendar effects, the quarterly labour cost rate was 4.1%, mainly due to the lower number of hours worked during the holiday period in the third quarter as compared to the second.

Harmonised Labour Cost Index in the third quarter 2022

Index and quarterly rates by cost components

	General Index		Index adjusted for seasonal and calendar effects	
	Index	Rate	Index	Rate
Total labour cost	115.1	4.1	112.4	0.5
Wages	113.6	2.3	112.1	0.7
Other costs	119.5	9.6	113.3	0.1
Labour costs excluding extraordinary and late payment	118.9	9.2	112.4	0.3

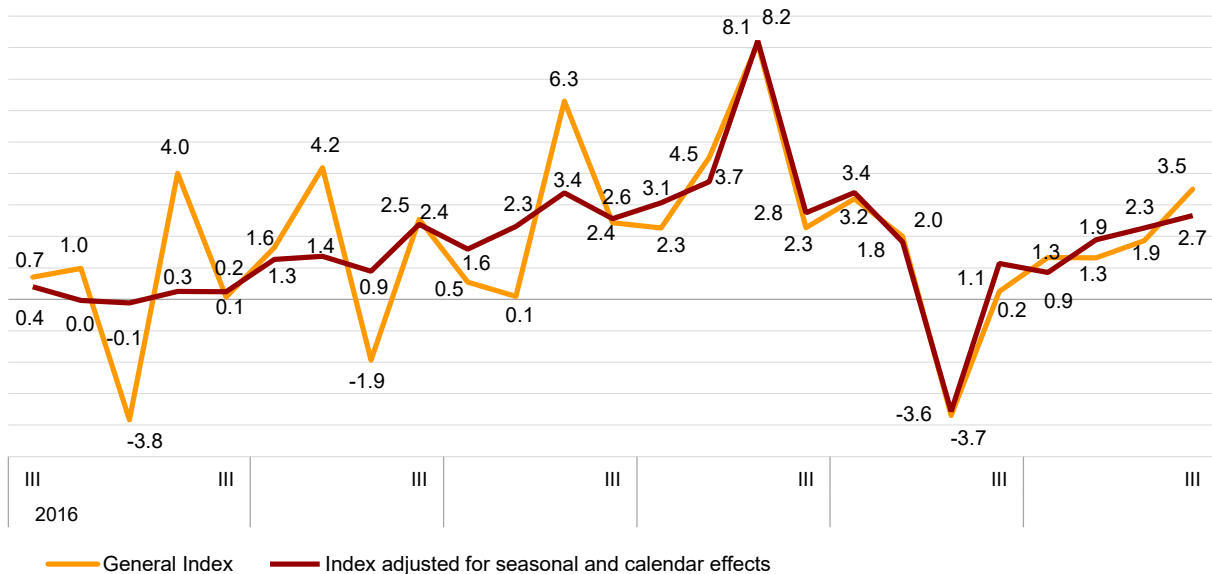
Annual variation of the Index

The cost per hour worked increased by 3.5% in the third quarter of 2022, as compared with the same period of the previous year.

The annual variation of the cost per hour was 2.7%, after adjusting for seasonal and calendar effects.

Variation of the general index and index adjusted for seasonal and calendar effects

Annual rate. Percentage



By cost component, in corrected data, wage costs showed an annual variation of 2.9%, while other costs increased by 2.0%.

Harmonised Labour Cost Index in the third quarter 2022

Index and annual rates by cost components

	General Index		Index adjusted for seasonal and calendar effects	
	Index	Rate	Index	Rate
Total labour cost	115.1	3.5	112.4	2.7
Wages	113.6	3.7	112.1	2.9
Other costs	119.5	3.0	113.3	2.0
Labour costs excluding extraordinary and late payment:	118.9	3.3	112.4	2.3

Results by activity sections

The sections that registered the highest annual increases in the third quarter of 2022 were *Hospitality* (8.1%), *Real estate activities* (7.7%) and *Transport and storage* (7.2%).

In turn, Artistic, recreational and entertainment activities (–4.6%) and Financial and insurance activities (–1.0%) presented negative annual rates.

Harmonised Labour Cost Index in the third quarter 2022 by activity sections

General index and index adjusted for seasonal and calendar effects

	General		Adjusted for calendar effects		Adjusted for seasonal and calendar effects	
	Index ²	Rate ¹	Index ²	Rate ¹	Index ²	Rate ¹
TOTAL	115.1	3.5	115.1	2.3	112.4	2.7
B. Mining and quarrying industries	106.4	4.8	106.4	4.1	104.8	3.2
C. Manufacturing industries	116.1	4.5	115.9	3.0	110.3	2.9
D. Electricity, gas, steam and air conditioning supply	102.9	1.9	102.6	1.0	114.3	2.6
E. Water supply, waste management and remediation activities	116.1	4.1	115.9	3.0	116.3	3.4
F. Construction	108.4	3.2	108.4	2.2	109.6	3.3
G. Wholesale and retail trade, repair of motor vehicles and motorcycles	118.9	6.4	118.8	5.1	117.0	4.8
H. Transport and storage	111.1	7.2	111.1	6.0	110.1	6.1
I. Accommodation	108.8	8.1	108.7	7.3	110.0	7.5
J. Information and communications	118.4	0.1	118.1	-1.5	112.4	-1.3
K. Financial and insurance activities	111.8	-1.0	111.7	-2.4	110.1	-0.9
L. Real estate activities	121.1	7.7	121.0	6.5	123.6	6.7
M. Professional, scientific and technical activities	118.2	1.4	118.1	0.3	111.8	1.6
N. Administrative and support services activities	115.3	2.4	115.4	1.6	112.8	1.0
O. Public Administration and defence, compulsory Social Security	112.0	1.3	111.8	-0.2	114.0	1.2
P. Education	117.2	3.1	118.8	1.9	108.5	2.5
Q. Health and social services activities	115.5	3.5	115.6	3.2	111.5	3.2
R. Arts, entertainment and recreation	111.4	-4.6	111.3	-5.7	112.5	-6.2
S. Other services	119.8	4.4	120.0	3.5	117.2	3.2

¹ As compared to the same quarter of the previous year

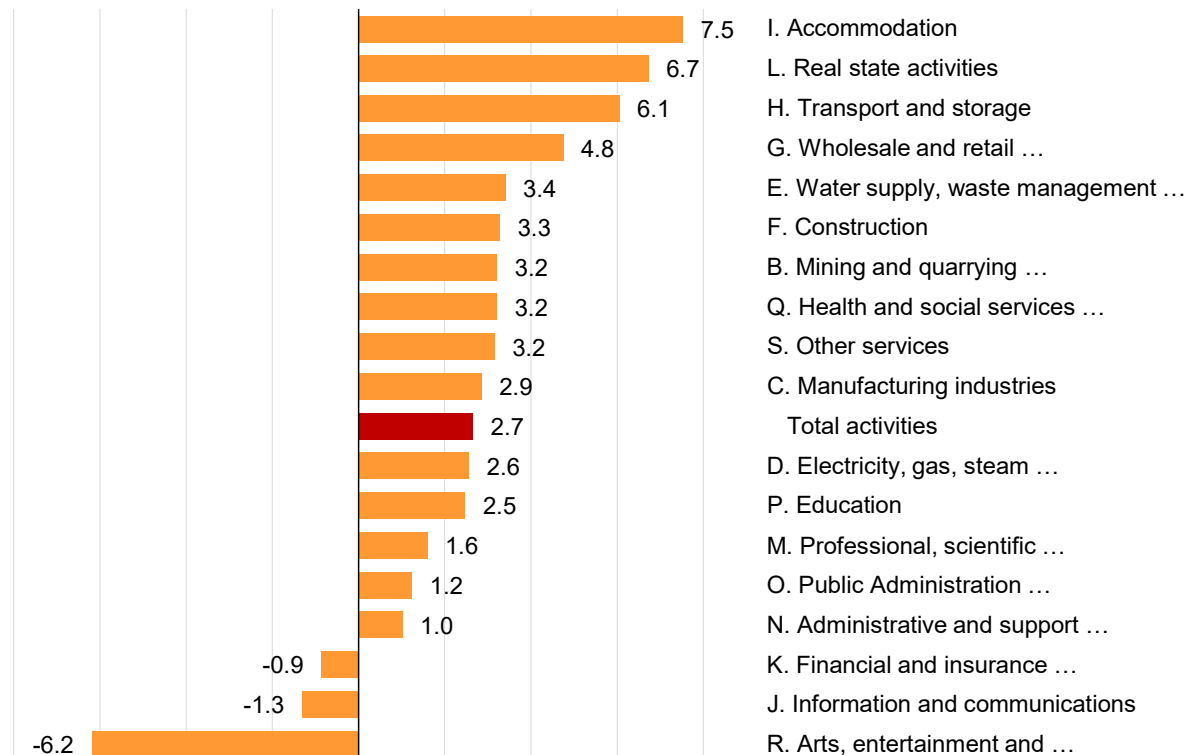
² Base year 2016

After adjusting for seasonal and calendar effects, the activities that presented the highest annual rates were *Hospitality* (7.5%), *Real estate activities* (6.7%) and *Transport and storage* (6.1%).

In turn, negative variations were registered in *Artistic, recreational and entertainment activities* (–6.2%), *Information and communications* (–1.3%) and *Financial and insurance activities* (–0.9%).

Index adjusted for seasonal and calendar effects. Activity sections

Third quarter 2022. Annual rate. Percentage



Results by activity sections and cost components. Original series

The activity sections that recorded the greatest annual increases in wage costs in the third quarter of 2022 were *Extractive industries* (8.5%), *Real estate activities* (7.5%) and *Wholesale and retail trade; repair of motor vehicles and motorcycles* (7.1%).

In turn, *Artistic, recreational and entertainment activities* (–6.6%) and *Financial and insurance activities* (–0.4%) presented negative rates, while *Information and communications* recorded the lowest growth (0.3%).

In terms of *other costs*, the sections with the highest annual increases were *Hospitality* (18.6%), *Transport and storage* (8.5%) and *Real estate activities* (8.4%).

And those that presented the lowest rates were *Extractive industries* (–4.8%), *Financial and insurance activities* (–2.7%) and *Supply of electricity, gas, steam and air conditioning* (–1.1%).

Índice de Coste Laboral Armonizado en el tercer trimestre de 2022 por secciones de actividad

Índices por componentes del coste

	Coste salarial		Otros costes		Coste laboral excluyendo pagos extraordinarios y atrasos	
	Índice ²	Tasa ¹	Índice ²	Tasa ¹	Índice ²	Tasa ¹
TOTAL	113,6	3,7	119,5	3,0	118,9	3,3
B. Industrias extractivas	108,2	8,5	101,3	-4,8	107,2	0,1
C. Industria manufacturera	114,5	5,1	120,9	2,6	120,5	4,0
D. Suministro de energía eléctrica, gas, vapor y aire acondicionado	100,4	2,9	112,0	-1,1	112,2	0,0
E. Suministro de agua, actividades de saneamiento, gestión de residuos y descontaminación	114,2	4,2	121,1	3,7	119,3	3,8
F. Construcción	107,1	3,6	111,5	2,4	113,3	2,7
G. Comercio al por mayor y al por menor; reparación de vehículos de motor y motocicletas	118,7	7,1	119,2	4,6	120,5	5,4
H. Transporte y almacenamiento	108,2	6,7	118,3	8,5	115,9	7,4
I. Hostelería	109,6	4,7	106,6	18,6	110,6	7,6
J. Información y comunicaciones	119,4	0,3	115,1	-0,6	121,7	1,3
K. Actividades financieras y de seguros	110,4	-0,4	116,3	-2,7	120,4	-2,3
L. Actividades inmobiliarias	120,9	7,5	121,7	8,4	125,2	6,1
M. Actividades profesionales, científicas y técnicas	118,5	0,9	117,1	3,2	122,0	3,6
N. Actividades administrativas y servicios auxiliares	115,4	3,2	114,9	0,4	116,4	2,1
O. Administración pública y defensa; Seguridad Social obligatoria	108,5	1,4	123,7	0,9	116,3	1,2
P. Educación	116,7	3,7	118,7	1,6	122,4	3,0
Q. Actividades sanitarias y de servicios sociales	111,6	3,6	128,9	3,0	119,5	3,2
R. Actividades artísticas, recreativas y de entretenimiento	108,7	-6,6	120,3	2,0	116,3	-2,5
S. Otros servicios	119,8	4,4	120,1	4,3	123,0	4,3

¹ Mismo trimestre del año anterior

² Año base 2016

Data Review and Update

Coinciding with today's publication, HLCI provisional data for the second quarter of 2022 have been updated. The final index stands at 110.5 points.

The quarterly variation of the original series for that quarter stood at 6.9%, and that of the adjusted index was 0.3%. On the other hand, the annual rate of the original series was 1.9% and that for the index adjusted for seasonal and calendar effects, 2.3%. The results are available at INEBase.

Methodological note

The Harmonised Labour Cost Index (HLCI) is a quarterly continuous statistical operation whose objective is to provide a common and comparable measure of labour cost per hour worked for the whole of the European Union, allowing the monitoring of the evolution of said labour costs.

Indices with base 2016 are provided for total labour costs, wages and salaries, and other net costs of subsidies received for the use of labour factor (this includes social contributions payable by employers and non-wage payments). The total labour cost index is also provided, excluding extraordinary payments and arrears.

Type of operation: Statistics presented mainly in the form of indices.

Base year: 2016.

Population scope: Employees in local units.

Sources of information: The Quarterly Labour Cost Survey which is conducted on the basis of the Social Security contribution accounts. General Scheme: Sections B to S of CNAE-09 and Special Scheme for Seafarers: Sea Transport (Division 50 of CNAE-09). In order to cover all employees of the general government, information from the DARETRI file is used.

Geographical scope: the entire national territory.

Reference period of the results: the calendar quarter.

Calculation method: Laspeyres' Chain Index.

For more information the methodology can be accessed at:

https://www.ine.es/metodologia/t22/t2230211met_12.pdf

The standardized methodological report is at:

<https://www.ine.es/dynt3/metadatos/es/RespuestaDatos.html?oe=30211>

INE statistics are produced in accordance with the Code of Good Practice for European Statistics, which is the basis for the institution's quality policy and strategy. For more information, see the section [C Quality at INE and the Code of Best Practices](#) en la página web del INE.

For further information see **INEbase:** www.ine.es/en/ Twitter: [@es_ine](https://twitter.com/es_ine)

All press releases at: www.ine.es/en/prensa/prensa_en.htm

Press office: Telephone numbers: (+34) 91 583 93 63 /94 08 – gprensa@ine.es

Information Area: Telephone number: (+34) 91 583 91 00 – www.ine.es/infoine/?L=1
