

10 March 2010

**Harmonised Labour Cost Index (HLCI). Base 2008**  
Fourth quarter of 2009. *Provisional data*

**The cost per hour worked increases 5.0% in the fourth quarter of 2009 with respect to the same period of 2008**

**The increase stands at 3.6% if adjusted for calendar and seasonal effects**

The cost per hour worked increased 5.0% in the fourth quarter as compared with the same period of 2008. After adjusting for seasonal and calendar effects, the interannual rate stood at 3.6%.

**National index**

Total and by activity section

	General index		Index seasonally adjusted and adjusted for calendar effects	
	Index <sup>2</sup>	Rate <sup>1</sup>	Index <sup>2</sup>	Rate <sup>1</sup>
<b>TOTAL</b>	110.5	5.0	105.6	3.6
B. Extractive industries	106.5	1.6	103.4	2.0
C. Manufacturing industry	111.5	5.1	106.7	3.9
D. Supply of electrical energy, gas, steam and air conditioning	102.5	2.8	104.3	3.2
E. Water supply, waste management and decontamination activities	110.2	5.8	104.0	3.5
F. Construction	114.4	6.1	107.3	4.1
G. Wholesale and retail trade, repair of motor vehicles and motorcycles	113.6	8.0	108.1	6.3
H. Transport and storage	108.0	5.9	105.0	4.5
I. Accommodation	108.0	-0.3	100.8	-0.8
J. Information and communications	105.3	3.6	103.6	2.2
K. Financial and insurance activities	103.0	3.5	103.1	2.1
L. Real estate activities	107.3	1.7	102.1	0.5
M. Professional, scientific and technical activities	110.1	5.1	106.4	4.0
N. Administrative and support service activities	106.2	2.8	103.1	1.7
O. Public Administration and Defence; Compulsory Social Security <sup>3</sup>	113.5	5.6		
P. Education	105.5	4.8	107.3	4.3
Q. Health activities and social services	109.7	4.3	103.9	2.3
R. Arts, recreation and entertainment activities	110.6	1.0	103.2	0.9
S. Other services	108.2	4.8	104.5	3.8

<sup>1</sup> Same quarter from the previous year

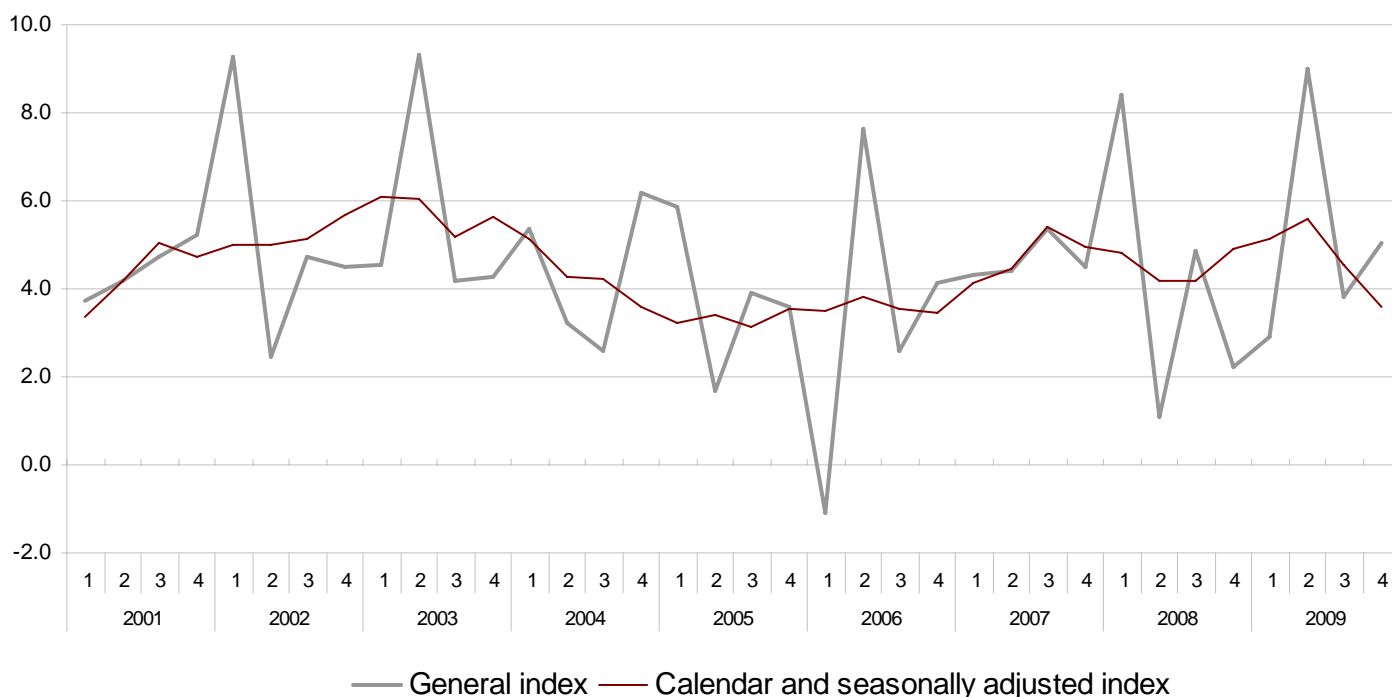
<sup>2</sup> Base year 2008

<sup>3</sup> Series adjusted for seasonal and calendar effects cannot be obtained until 2010

The data from the Harmonised Labour Cost Index (HLCI) is sent every quarter to the Statistical Office of the European Communities (Eurostat) for its subsequent publication by this body, thus complying with the statistical requirement established in the action plan of the European Monetary Union.

## Annual variations

General index, calendar and seasonally adjusted index  
%



## Adaptation to CNAE-2009

Once the CNAE-2009 implementation process was finalised, this being the reason behind maintaining the data as provisional during the year 2009, the final results were published on the INE website, except for the one corresponding to the fourth quarter of 2009, which is of a provisional nature until dissemination in the first quarter of 2010, which is when it will be reviewed and finalised.

For further information see **INEbase-[www.ine.es](http://www.ine.es)** All press releases at: **[www.ine.es/prensa/prensa\\_en.htm](http://www.ine.es/prensa/prensa_en.htm)**

**Press Office:** Telephone numbers: 91 583 93 63 / 94 08 – Fax: 91 583 90 87 - [gprensa@ine.es](mailto:gprensa@ine.es)

**Information Area:** Telephone number: 91 583 91 00 – Fax: 91 583 91 58 – [www.ine.es/infoine](http://www.ine.es/infoine)