

22 September 2020

**Industrial Turnover Indices (ITI). Base 2015**

July 2020. Provisional data

**The monthly variation of the Total Industrial Turnover Index<sup>1</sup> stands at 6.5%, after seasonal and calendar adjustment**

**The annual rate stands at -11.1% in the seasonal and calendar adjusted series and at -10.6% in the original series**

**COVID-19's Effects on the July STI**

- In accordance with Royal Decree 555/2020, the state of alarm came to an end on June 21st. With the new normality, the Industry has continued to recover its rhythm in the month of July, with monthly turnover growth of 6.5%.
- The greatest dynamism compared to the previous month was observed in the *Clothing manufacturing* (with an increase of 17.2%), *Beverage Manufacturing* (16.9%) and *Furniture manufacturing* (15.2%).
- The annual Industry turnover rate continued to recover, although it fell 11.1% and remained below July 2019 levels.
- The decrease in production and the drop in prices in *Coke ovens and oil refining* caused this activity to register the most negative annual rate ( -44.4%) followed by the *Leather and footwear industry* (- 31.9%).
- On the other hand, the *Manufacture of motorcycles, bicycles, vehicles for the disabled and other transport equipment* (32.1%), the *Tobacco Industry* (15.4) and the *Manufacture of domestic appliances* (7.8%) were the branches where production increased the most compared to July 2019.
- In the annual rate, industry turnover decreased in all the autonomous communities. The smallest decreases were recorded in Galicia (-2,2%) and Aragón (-2.9%), while Illes Balears (-24.7%) and Principado de Asturias (-24.4%) had the largest decreases.

---

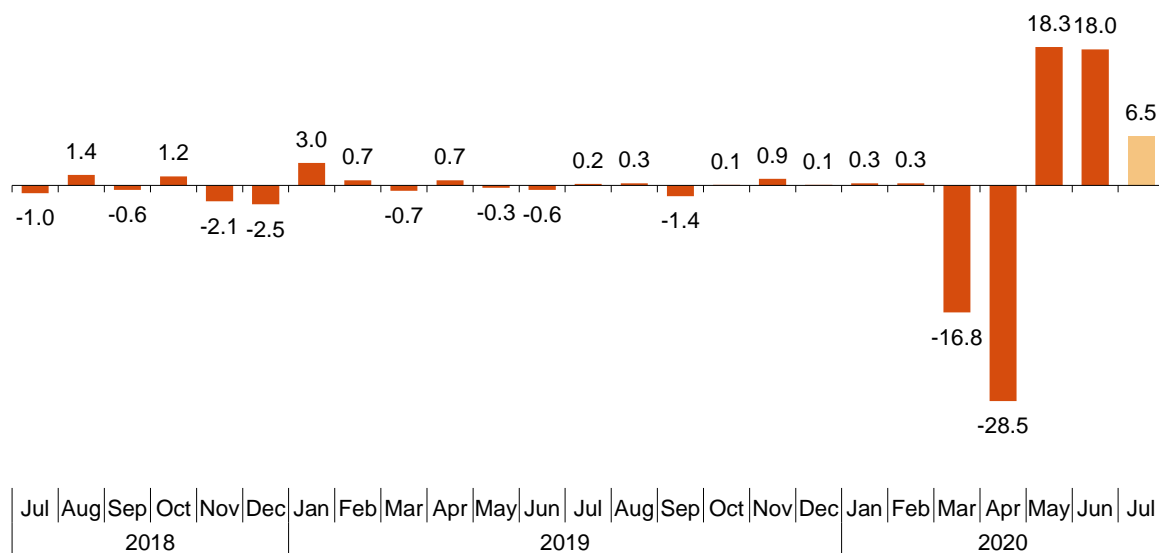
<sup>1</sup> As indicated in the methodology of this value index, the information is presented in current terms (nominal terms), this is, without adjusting the price variation effects.

### Monthly trend of the Industrial Turnover

The monthly variation of the seasonally and calendar adjusted Total Industrial Turnover Index between the months of July and June, stood at 6.5%. This rate was 11.5 points lower than the previous month.

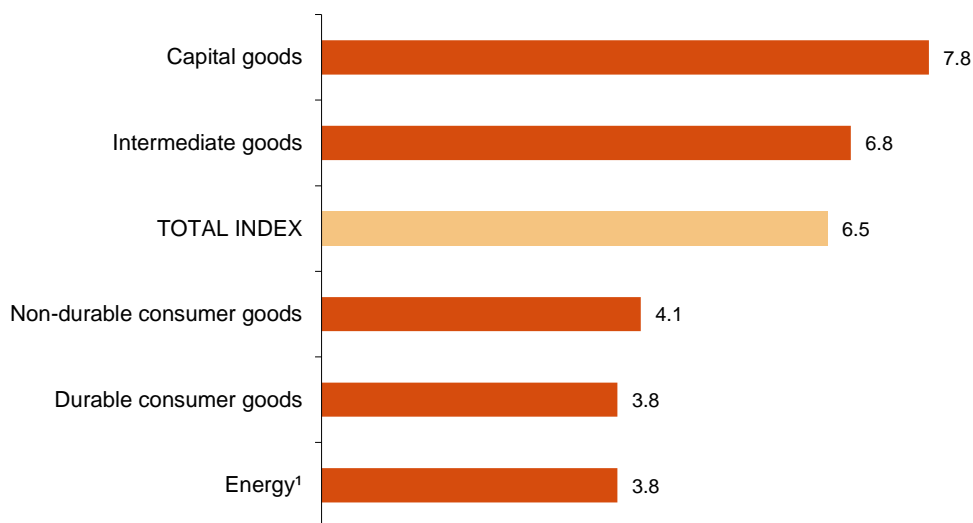
#### Industrial Turnover Index, Total. Seasonally and calendar adjusted

Monthly rate. Percentage



By Main Industrial Groupings (MIGs), all sectors showed positive monthly rates. It is worth highlighting the increase in *Capital goods* (7.8%), followed by *Intermediate goods* (6.8%) .

#### Industrial Turnover Indices, Total and by MIGs. Seasonally and calendar adjusted. July 2020. Monthly rate. Percentage



<sup>1</sup> Except electricity, gas, steam, air conditioning and water supply.

A more detailed analysis showed the branches of activity with the highest and the lowest monthly rates in the month of July.

**Branches of activity with the highest monthly rates of the Industrial Turnover Index.  
Seasonally and calendar adjusted**

Branch of activity (Division of the CNAE 2009)	Monthly rate (%)
Manufacture of garments	17.2
Manufacture of beverages	16.9
Manufacture of furniture	15.2

**Branches of activity with the lowest monthly rates of the Industrial Turnover Index.  
Seasonally and calendar adjusted**

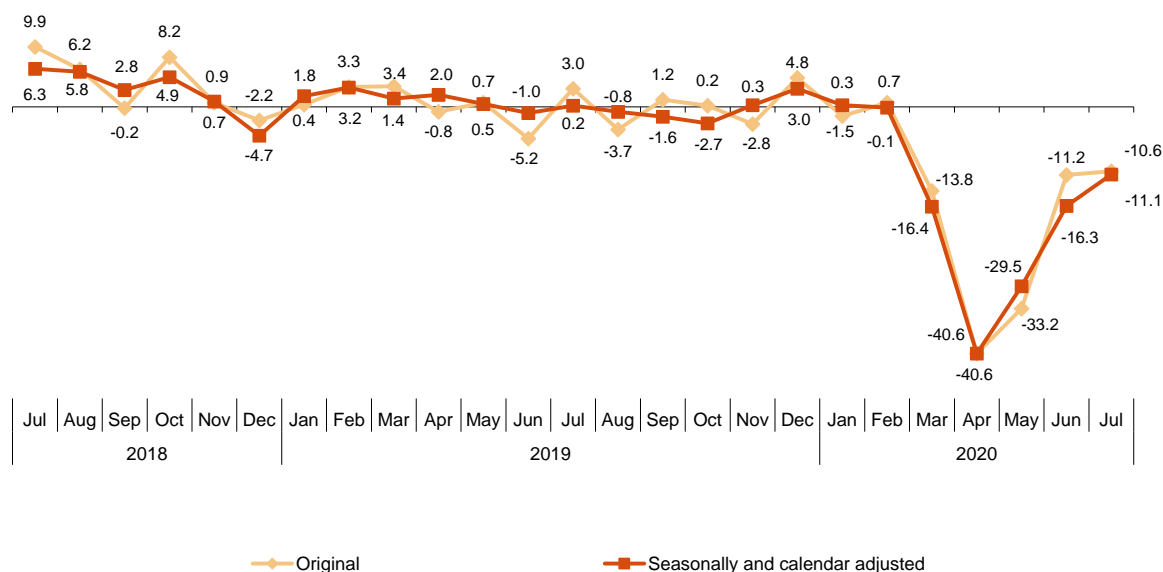
Branch of activity (Division of the CNAE 2009)	Monthly rate (%)
Manufacture of machinery and equipment n.e.c.	-4.4
Manufacture of computer, electronic and optical products	-1.4
Food industry	1.3

### Annual trend of the Industrial Turnover Indices

The Total Industrial Turnover Index, once adjusted for seasonal and calendar effects, showed a variation of -11.1% in July, as compared with the same month of the previous year. This rate was 5.2 points higher than the one registered in June.

The ITI original series registered an annual variation of -10.6%. This rate was six tenths higher than the one in June.

#### Industrial Turnover Index, Total. Seasonally and calendar adjusted Annual rates. Percentage



By MIGs, the seasonally and calendar adjusted indices registered negative annual rates in all the analysed sectors, highlighting the decrease in *Energy*<sup>2</sup> (-44.5%).

#### Industrial Turnover Index, Total and by MIGs. Annual rates

	Unadjusted index	Seasonally and calendar adjusted index
	Annual rate (%)	Annual rate (%)
<b>TOTAL INDEX</b>	<b>-10.6</b>	<b>-11.1</b>
1. Consumer goods	-5.3	-5.6
1.1. Durable consumer goods	-0.3	-1.4
1.2. Non-durable consumer goods	-5.6	-6.1
2. Capital goods	-8.4	-8.8
3. Intermediate goods	-9.2	-9.8
4. Energy <sup>1</sup>	-44.4	-44.5

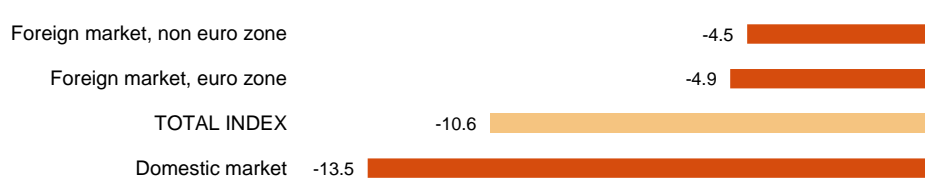
<sup>1</sup> Except electricity, gas, steam, air conditioning and water supply.

<sup>2</sup> Except electricity, gas, steam, air conditioning and water supply.

### Annual trend of the Industrial Turnover Indices by market. Original series

In July all markets showed negative annual rates. It is worth noting the decrease registered in the domestic market (-13.5%)

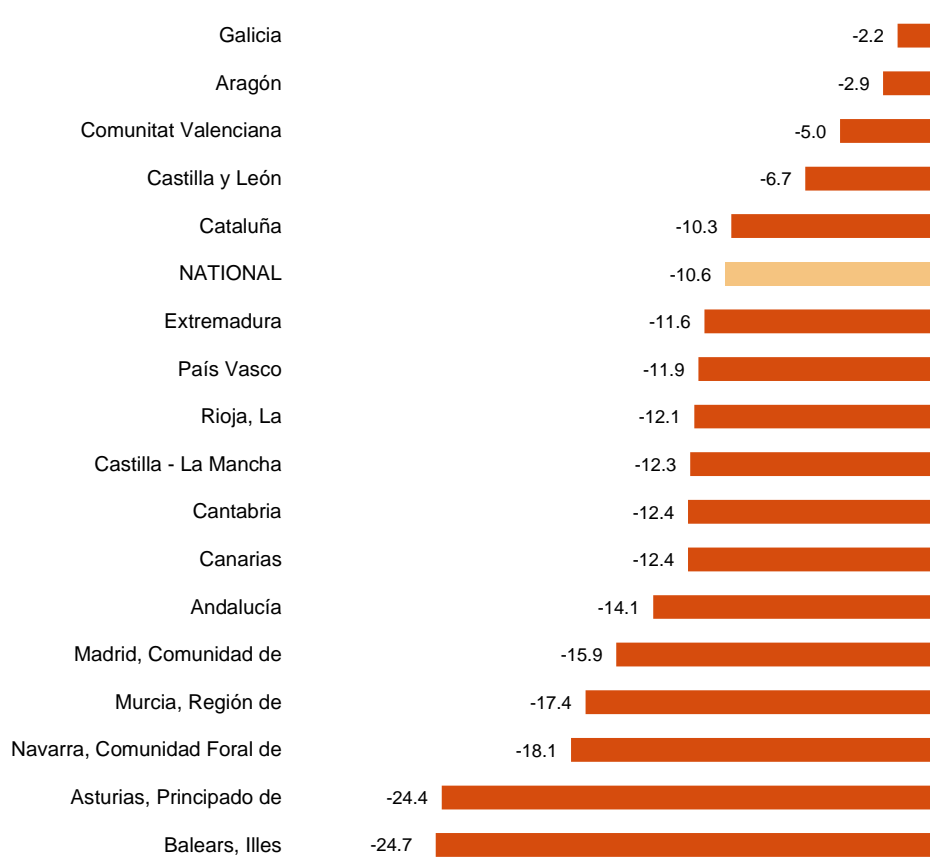
#### Industrial Turnover Index, Total and by market July 2020. Annual rate. Percentage



### Results by Autonomous Community. Annual rates of the Industrial Turnover. Original series

Turnover decreased as compared to July 2019 in all the autonomous communities. The largest decreases were recorded in Illes Balears (-24.7%), Principado de Asturias (-24.4%) and Comunidad Foral de Navarra (-18.1%). The shortest decreases were recorded in Galicia (-2.2%), Aragón (-2.9%) and Comunitat Valenciana (-5.0%).

#### Industrial Turnover Index, Total and by Autonomous Community July 2020. Annual rate. Percentage



## Revisions and data update

On the press release day, INE has updated ITI data series corresponding to the last 13 months. In the case of calendar adjusted and seasonally and calendar adjusted series, according to INE standard, series are revised since its beginning. Results are available at INEBase.

## Methodological note

Industrial Turnover Indices (ITI) are short-term indicators aiming at measuring the monthly evolution of the industrial sector, excluding the construction.

The required information is collected since January 2002, together with the Industrial New Orders Received Indices (INORI) through a survey addressed to more than 12.000 industrial establishments throughout the country.

**Survey Type:** ongoing monthly.

**Base year:** 2015.

**Population scope:** units of economic activity whose main activity is included in Sections B: Extractive industries (with the exception, due to their not being relevant to Spanish industry, of division 09) or C: Manufacturing industry of CNAE-2009.

**Geographical scope:** the whole country, excluding Ceuta and Melilla.

**Sample size:** Approx. 12,000 establishments.

**Data collection:** monthly, value of total business turnover broken down by market.

**Collection method:** fill in a questionnaire by the respondent using one of the following methods: internet (IRIA system), email, fax, telephone or post.

Further information is available in the methodology:

[http://www.ine.es/dyngs/INEbase/en/operacion.htm?c=Estadistica\\_C&cid=1254736148782&menu=metodologia&idp=1254735576715](http://www.ine.es/dyngs/INEbase/en/operacion.htm?c=Estadistica_C&cid=1254736148782&menu=metodologia&idp=1254735576715)

And in the standardised methodological report:

<http://www.ine.es/dynt3/metadatos/en/RespuestaDatos.html?oe=30052>

---

For further information see **INEbase:** [www.ine.es/en/](http://www.ine.es/en/) Twitter: [@es\\_ine](https://twitter.com/es_ine)

All press releases at: [www.ine.es/en/prensa/prensa\\_en.htm](http://www.ine.es/en/prensa/prensa_en.htm)

---

**Press office:** Telephone numbers: (+34) 91 583 93 63 /94 08 – [gprensa@ine.es](mailto:gprensa@ine.es)

**Information Area:** Telephone number: (+34) 91 583 91 00 – [www.ine.es/infoine/?L=1](http://www.ine.es/infoine/?L=1)

---

## Industrial Turnover Index. Base 2015

July 2020

Provisional data

### 1. Turnover indices<sup>1</sup>

#### Seasonally and calendar adjusted

	Index	Rate (%)		
		Monthly	Annual	Year-to-date average
<b>TOTAL INDEX</b>	<b>101.3</b>	<b>6.5</b>	<b>-11.1</b>	<b>-16.3</b>
1. Consumer goods	105.1	4.4	-5.6	-6.3
1.1. Durable consumer goods	104.9	3.8	-1.4	-20.0
1.2. Non-durable consumer goods	104.7	4.1	-6.1	-5.6
2. Capital goods	104.4	7.8	-8.8	-21.1
3. Intermediate goods	102.7	6.8	-9.8	-15.5
4. Energy <sup>2</sup>	67.8	3.8	-44.5	-39.7

<sup>1</sup>Regulation (EC) no. 656/2007 of the Commission of 14 June 2007.

<sup>2</sup> Except electricity, gas, steam, air conditioning and water supply.

### 2. Turnover indices<sup>1</sup>

#### Calendar adjusted

	Index	Rate (%)	
		Annual	Year-to-date average
<b>TOTAL INDEX</b>	<b>107.1</b>	<b>-11.1</b>	<b>-16.5</b>
1. Consumer goods	112.7	-5.5	-6.6
1.1. Durable consumer goods	119.1	-0.8	-19.8
1.2. Non-durable consumer goods	112.4	-5.9	-5.8
2. Capital goods	108.9	-9.0	-21.4
3. Intermediate goods	108.2	-9.8	-15.6
4. Energy <sup>2</sup>	71.8	-44.5	-41.0

<sup>1</sup>Regulation (EC) no. 656/2007 of the Commission of 14 June 2007.

<sup>2</sup> Except electricity, gas, steam, air conditioning and water supply.

### 3. Turnover indices, Total and by activities Unadjusted

	Index	Rate (%)		Effect
		Annual	Year-to-date average	Annual
<b>TOTAL INDEX</b>	<b>110.3</b>	<b>-10.6</b>	<b>-16.0</b>	
<b>1. CONSUMER GOODS</b>	<b>116.1</b>	<b>-5.3</b>	<b>-6.1</b>	<b>-1.608</b>
1.1. Durable consumer goods	123.8	-0.3	-19.1	-0.005
- Manufacture of consumer electronics, optical instruments and photographic equipment	111.1	-22.1	-20.4	-0.011
- Manufacture of household appliances	104.9	7.8	-10.0	0.035
- Manufacture of motorcycles, bicycles, vehicles for the disabled and others	190.5	32.1	11.2	0.025
- Manufacture of furniture	136.8	-2.6	-23.1	-0.031
- Manufacture of jewellery, costume jewellery and musical instruments	77.8	-20.3	-36.6	-0.023
1.2. Non-durable consumer goods	115.6	-5.6	-5.3	-1.603
- Food industries (except grain mill products and food for animals)	112.6	-4.6	-1.0	-0.733
- Manufacture of beverages	129.8	-7.2	-15.9	-0.280
- Manufacture of tobacco	54.3	15.4	-5.9	0.007
- Manufacture of knitted fabrics, carpets, rope, non-woven fabrics, textile products for technical use and industrial and other textile products	128.4	1.2	-14.4	0.008
- Manufacture of garments	92.1	-19.3	-28.7	-0.179
- Leather and footwear industry	93.9	-26.8	-29.0	-0.274
- Graphic arts and reproduction of recorded media	86.2	-8.8	-15.8	-0.081
- Manufacture of cleaning articles, perfumes and cosmetics	141.1	-6.0	-5.5	-0.108
- Manufacture of pharmaceutical products	131.0	1.6	5.1	0.048
- Manufacture of sporting goods; games and toys and Other manufacturing industries	113.7	-2.8	-17.9	-0.010
<b>2. CAPITAL GOODS</b>	<b>112.7</b>	<b>-8.4</b>	<b>-20.5</b>	<b>-2.143</b>
- Manufacture of metal products for construction, containers made of metal, steam generators, weapons and ammunition	107.9	-10.8	-16.5	-0.232
- Manufacture of computers, peripherals and telecommunications equipment; appliances for measuring and navigation; radiation and medical and therapeutic equipment	124.2	-6.7	-4.0	-0.040
- Manufacture of machinery and equipment n.e.c.	113.7	-9.7	-12.7	-0.390
- Manufacture of motor vehicles, trailers and semi-trailers	108.9	-2.9	-25.7	-0.375
- Naval, railway, aircraft and spacecraft construction. Combat vehicles	139.1	-21.2	-18.2	-0.788
- Manufacture of medical and dental instruments and supplies	127.9	0.1	-9.5	0.000
- Repair and installation of machinery and equipment	101.7	-16.6	-13.4	-0.319
<b>3. INTERMEDIATE GOODS</b>	<b>111.8</b>	<b>-9.2</b>	<b>-15.3</b>	<b>-3.285</b>
- Mining of metal ores	.	.	.	.
- Other mining and quarrying	111.4	-6.5	-15.2	.
- Manufacture of grain mill products, starches, and food for animals	113.9	-2.0	2.3	-0.055
- Preparation and spinning of textile fibres. Manufacture of woven textiles. Textile finishings	111.2	1.2	-17.6	0.005
- Wood and cork industry	130.9	-8.4	-14.7	-0.125
- Paper industry	105.5	-13.3	-11.3	-0.352
- Chemical industry except cleaning articles, perfumes and cosmetics	101.0	-10.4	-12.3	-0.637
- Rubber and plastic material transformation industry	116.5	-4.0	-15.3	-0.163
- Manufacture of other non-metallic ore products	134.1	-4.2	-14.3	-0.163
- Metallurgy; manufacture of iron, steel and ferro-alloy products	95.9	-16.4	-22.7	-0.934
- Forging, stamping, embossing and rolling of metals. - Manufacture of tools, hardware goods, containers and other metal products	111.4	-14.3	-22.6	-0.650
- Manufacture of electronic components, assembled printed circuits, and magnetic and optical media	131.8	-11.1	-1.4	-0.030
- Manufacture of electrical material and equipment except household appliances	131.2	-4.7	-17.3	-0.142
<b>4. ENERGY<sup>1</sup></b>	<b>72.4</b>	<b>-44.4</b>	<b>-41.0</b>	<b>-3.594</b>
- Extraction of anthracite, coal and lignite	.	.	.	.
- Extraction of crude oil, petroleum and natural gas	.	.	.	.
- Manufacture of coke and refined petroleum products	72.9	-44.4	-41.0	-3.593

<sup>1</sup> Except electricity, gas, steam, air conditioning and water supply.

(.) Data not available due to statistical confidentiality.



#### 4. Turnover indices, Total and by branch of activity Unadjusted

	Index	Rate (%)		Effect
		Annual	Year-to-date average	Annual
<b>TOTAL INDEX</b>	<b>110.3</b>	<b>-10.6</b>	<b>-16.0</b>	
<b>B. Mining and quarrying industries</b>	<b>112.8</b>	<b>-5.8</b>	<b>-13.9</b>	<b>-0.040</b>
Extraction of anthracite, coal and lignite	.	.	.	.
Extraction of crude oil, petroleum and natural gas	.	.	.	.
Mining of metal ores	.	.	.	.
Other mining and quarrying	111.4	-6.5	-15.2	.
<b>C. Manufacturing industry</b>	<b>110.3</b>	<b>-10.7</b>	<b>-16.1</b>	<b>-10.591</b>
Food industry	112.8	-4.2	-0.5	-0.788
Manufacture of beverages	129.8	-7.2	-15.9	-0.280
Manufacture of tobacco	54.3	15.4	-5.9	0.007
Textile industry	121.1	1.2	-15.7	0.013
Manufacture of garments	92.1	-19.3	-28.7	-0.179
Leather and footwear industry	93.9	-26.8	-29.0	-0.274
Manufacture of wood and of products of wood and cork, except furniture; basketmaking and wickerwork	130.9	-8.4	-14.7	-0.125
Paper industry	105.5	-13.3	-11.3	-0.352
Graphic arts and reproduction of recorded media	86.2	-8.8	-15.8	-0.081
Manufacture of coke and refined petroleum products	72.9	-44.4	-41.0	-3.593
Chemical industry	108.3	-9.4	-10.9	-0.744
Manufacture of pharmaceutical products	131.0	1.6	5.1	0.048
Rubber and plastic material transformation industry	116.5	-4.0	-15.3	-0.163
Manufacture of other non-metallic ore products	134.1	-4.2	-14.3	-0.163
Metallurgy; manufacture of iron, steel and ferro-alloy products	95.9	-16.4	-22.7	-0.934
Manufacture of metal products, except machinery and equipment	110.2	-13.2	-20.8	-0.882
Manufacture of computer, electronic and optical products	125.6	-8.9	-4.0	-0.082
Manufacture of electrical material and equipment	126.6	-3.1	-16.5	-0.108
Manufacture of machinery and equipment n.e.c.	113.7	-9.7	-12.7	-0.390
Manufacture of motor vehicles, trailers and semi-trailers	108.9	-2.9	-25.7	-0.375
Manufacture of other transport material	140.4	-20.1	-17.4	-0.763
Manufacture of furniture	136.8	-2.6	-23.1	-0.031
Other manufacturing industries	113.6	-3.9	-16.7	-0.033
Repair and installation of machinery and equipment	101.7	-16.6	-13.4	-0.319

(.) Data not available due to statistical confidentiality.

#### 5. Turnover indices, Total and by branch of activity Unadjusted

	Index	Rate (%)	
		Annual	Year-to-date average
<b>GENERAL INDEX</b>	<b>110.3</b>	<b>-10.6</b>	<b>-16.0</b>
1. Domestic market	107.8	-13.5	-17.2
2. Non domestic market	114.4	-4.7	-13.6
2.1. Non domestic market, euro area	115.4	-4.9	-15.1
2.2. Non domestic market, non euro area	114.5	-4.5	-11.4

**6. Turnover indices, National and by Autonomous Community  
Unadjusted**

	Index	Rate (%)	
		Annual	Year-to-date average
<b>NATIONAL</b>	<b>110.3</b>	<b>-10.6</b>	<b>-16.0</b>
Andalucía	103.4	-14.1	-17.4
Aragón	119.4	-2.9	-15.3
Asturias, Principado de	95.4	-24.4	-22.5
Balears, Illes	102.8	-24.7	-26.7
Canarias	91.8	-12.4	-16.2
Cantabria	99.4	-12.4	-18.9
Castilla y León	100.3	-6.7	-13.4
Castilla - La Mancha	111.3	-12.3	-13.4
Cataluña	109.0	-10.3	-16.7
Comunitat Valenciana	123.8	-5.0	-12.9
Extremadura	112.4	-11.6	-4.0
Galicia	126.8	-2.2	-13.2
Madrid, Comunidad de	104.0	-15.9	-15.0
Murcia, Región de	120.5	-17.4	-17.3
Navarra, Comunidad Foral de	92.3	-18.1	-17.8
País Vasco	112.2	-11.9	-20.7
Rioja, La	99.4	-12.1	-13.5