

21 November 2023

**Industrial Turnover Indices (ITI). Base 2015**

September 2023. Provisional data

**The monthly variation of the Total Industrial Turnover Index<sup>1</sup> stands at 1.2%, after seasonal and calendar adjustment**

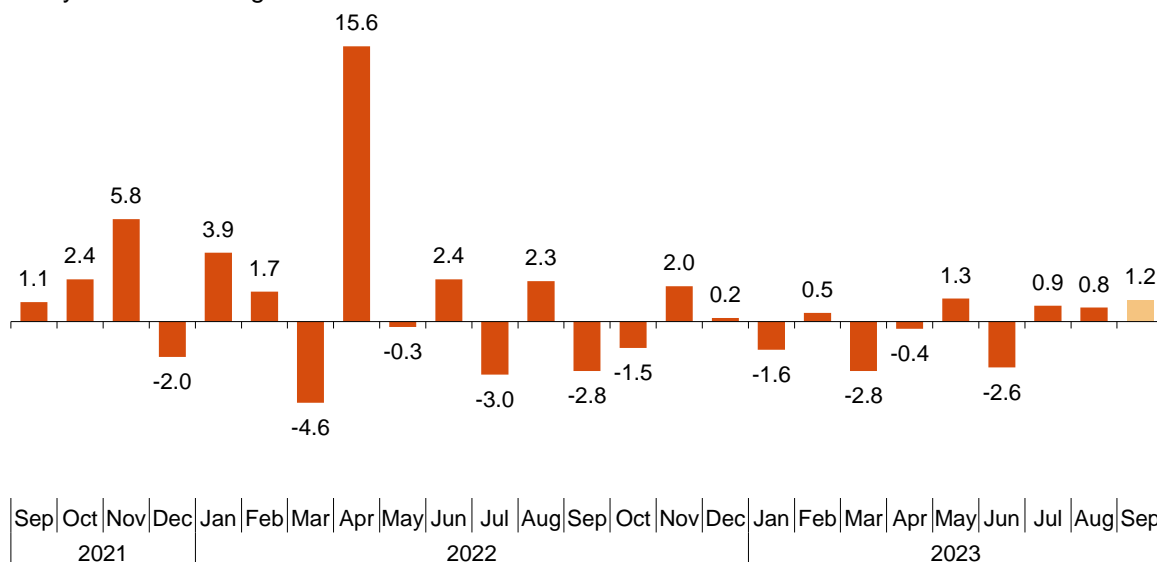
**The annual rate stands at -2.3% in the seasonal and calendar adjusted series and at -5.7% in the original series**

**Monthly trend of the Industrial Turnover**

The monthly variation of the seasonally and calendar adjusted Total Industrial Turnover Index between the months of September and August, stood at 1.2%. This rate was four tenths higher than the previous month.

**Industrial Turnover Index, Total. Seasonally and calendar adjusted**

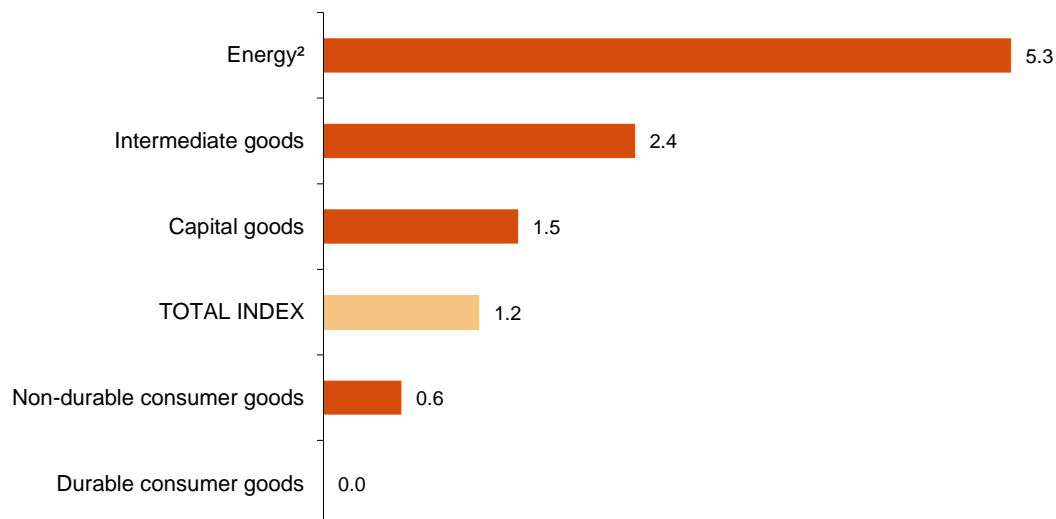
Monthly rate. Percentage



<sup>1</sup> As indicated in the methodology of this value index, the information is presented in current terms (nominal terms), this is, without adjusting the price variation effects.

By Main Industrial Groupings (MIGs), four of the five sectors showed positive monthly rates. It is worth highlighting the increase in *Energy*<sup>2</sup> (5.3%).

**Industrial Turnover Indices, Total and by MIGs. Seasonally and calendar adjusted. September 2023.** Monthly rate. Percentage



<sup>1</sup> Except electricity, gas, steam, air conditioning and water supply.

A more detailed analysis showed the branches of activity with the highest and the lowest monthly rates in the month of September.

**Branches of activity with the highest monthly rates of the Industrial Turnover Index. Seasonally and calendar adjusted**

Branch of activity (Division of the CNAE 2009)	Monthly rate (%)
Manufacture of other transport material	10.2
Manufacture of coke and refined petroleum products	5.2
Manufacture of pharmaceutical products	4.7

**Branches of activity with the lowest monthly rates of the Industrial Turnover Index. Seasonally and calendar adjusted**

Branch of activity (Division of the CNAE 2009)	Monthly rate (%)
Manufacture of motor vehicles, trailers and semi-trailers	-3.6
Manufacture of electrical material and equipment	-3.2
Manufacture of machinery and equipment n.e.c.	-2.9

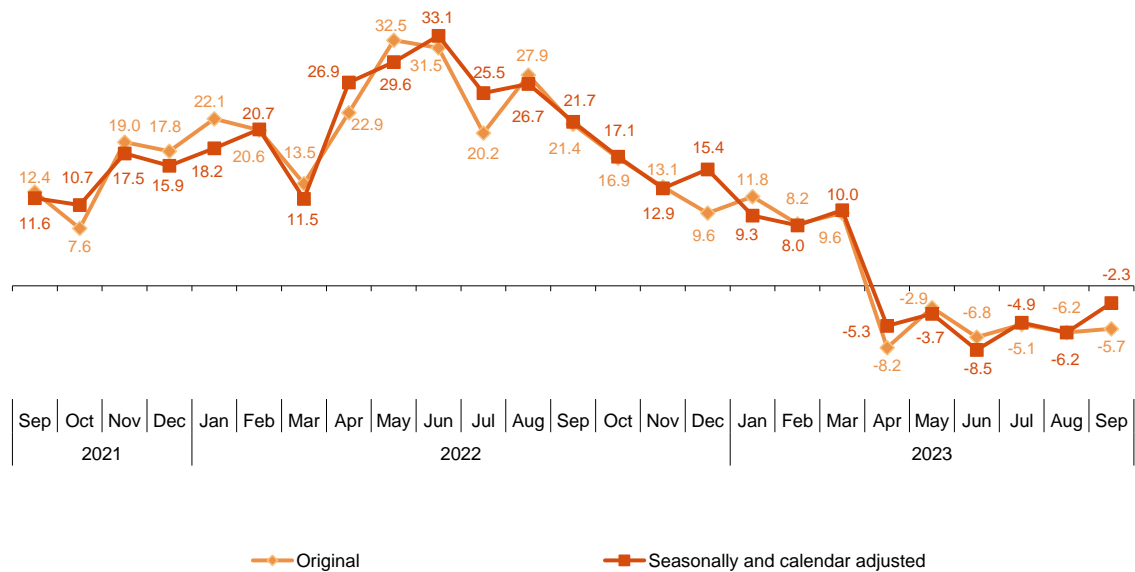
<sup>2</sup> Except electricity, gas, steam, air conditioning and water supply.

### Annual trend of the Industrial Turnover Indices

The Total Industrial Turnover Index, once adjusted for seasonal and calendar effects, showed a variation of  $-2.3\%$  in September, as compared with the same month of the previous year. This rate was almost four points higher than the one registered in August.

The ITI original series registered an annual variation of  $-5.7\%$ . This rate was five tenths higher than the one in August.

**Industrial Turnover Index, Total. Seasonally and calendar adjusted**  
Annual rates. Percentage



By MIGs, the seasonally and calendar adjusted indices registered negative annual rates in three of five of the analysed sectors, highlighting the decrease in *Energy*<sup>2</sup> ( $-9.5\%$ ).

**Industrial Turnover Index, Total and by MIGs. Annual rates**

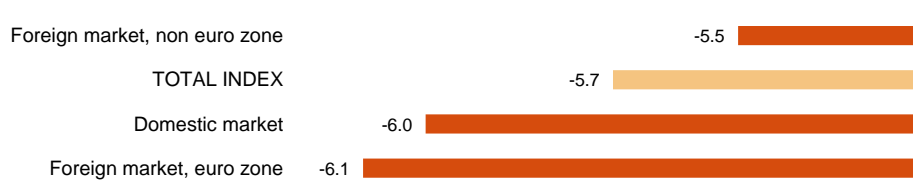
	Unadjusted index	Seasonally and calendar adjusted index
	Annual rate (%)	Annual rate (%)
<b>TOTAL INDEX</b>	<b>-5.7</b>	<b>-2.3</b>
1. Consumer goods	0.1	4.8
1.1. Durable consumer goods	-11.0	-6.7
1.2. Non-durable consumer goods	0.8	5.3
2. Capital goods	-0.3	3.6
3. Intermediate goods	-12.0	-8.5
4. Energy <sup>1</sup>	-10.1	-9.5

<sup>1</sup> Except electricity, gas, steam, air conditioning and water supply.

### Annual trend of the Industrial Turnover Indices by market. Original series

In September all markets showed negative annual rates. It is worth noting the decrease registered (-6.1%)

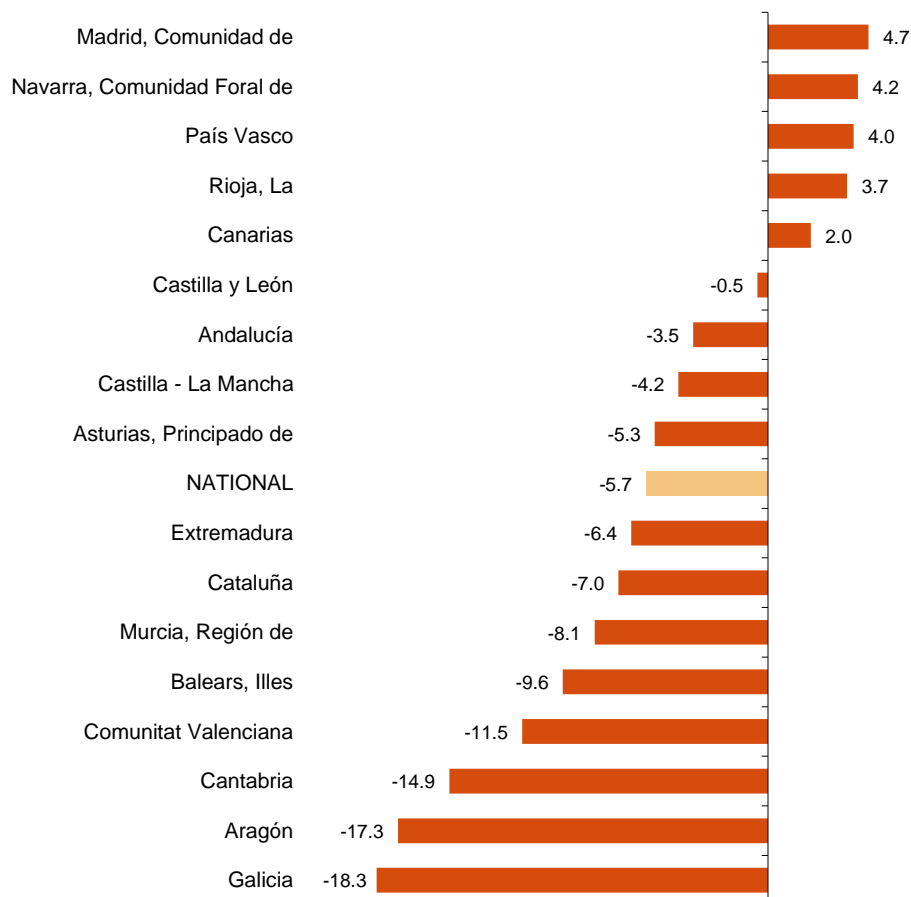
#### Industrial Turnover Index, Total and by market September 2023. Annual rate. Percentage



### Results by Autonomous Community. Annual rates of the Industrial Turnover. Original series

Turnover increased as compared to September 2022 in five Autonomous Communities and decreased in the other 12. The largest decreases were recorded in Galicia (-18.3%), Aragón (-17.3%) and Cantabria (-14.9%). The largest increases were recorded in Comunidad de Madrid (4.7%), Comunidad Foral de Navarra (4.2%) and País Vasco (4.0%).

#### Industrial Turnover Index, Total and by Autonomous Community September 2023. Annual rate. Percentage



## Revisions and data update

On the press release day, INE has updated ITI data series corresponding to the last 13 months. In the case of calendar adjusted and seasonally and calendar adjusted series, according to INE standard, series are revised since its beginning. Results are available at INEBase.

## Methodological note

Industrial Turnover Indices (ITI) are short-term indicators aiming at measuring the monthly evolution of the industrial sector, excluding the construction.

The required information is collected since January 2002, together with the Industrial New Orders Received Indices (INORI) through a survey addressed to more than 12.000 industrial establishments throughout the country.

**Survey Type:** ongoing monthly.

**Base year:** 2015.

**Population scope:** units of economic activity whose main activity is included in Sections B: Extractive industries (with the exception, due to their not being relevant to Spanish industry, of division 09) or C: Manufacturing industry of CNAE-2009.

**Geographical scope:** the whole country, excluding Ceuta and Melilla.

**Sample size:** Approx. 12,000 establishments.

**Data collection:** monthly, value of total business turnover broken down by market.

**Collection method:** fill in a questionnaire by the respondent using one of the following methods: internet (IRIA system), email, fax, telephone or post.

Further information is available in the methodology:

[http://www.ine.es/dyngs/INEbase/en/operacion.htm?c=Estadistica\\_C&cid=1254736148782&menu=metodologia&idp=1254735576715](http://www.ine.es/dyngs/INEbase/en/operacion.htm?c=Estadistica_C&cid=1254736148782&menu=metodologia&idp=1254735576715)

And in the standardised methodological report:

<http://www.ine.es/dynt3/metadatos/en/RespuestaDatos.html?oe=30052>

INE's statistics are produced according to the European Statistics Code of Practice, that underlies the policy and strategy of the institution quality. For further information, take a look at the section [Quality at INE and Code of Practice](#) at INE Website.

---

For further information see **INEbase:** [www.ine.es/en/](http://www.ine.es/en/) Twitter: [@es\\_ine](#)

All press releases at: [www.ine.es/en/prensa/prensa\\_en.htm](http://www.ine.es/en/prensa/prensa_en.htm)

---

**Press office:** Telephone numbers: (+34) 91 583 93 63 /94 08 – [gprensa@ine.es](mailto:gprensa@ine.es)

**Information Area:** Telephone number: (+34) 91 583 91 00 – [www.ine.es/infoine/?L=1](http://www.ine.es/infoine/?L=1)

---

**Industrial Turnover Index. Base 2015**  
**September 2023**  
 Provisional data

**1. Turnover indices<sup>1</sup>**  
**Seasonally and calendar adjusted**

	Index	Rate (%)		
		Monthly	Annual	Year-to-date average
<b>TOTAL INDEX</b>	<b>140.5</b>	<b>1.2</b>	<b>-2.3</b>	<b>-0.8</b>
1. Consumer goods	144.4	0.5	4.8	8.0
1.1. Durable consumer goods	123.0	0.0	-6.7	-2.6
1.2. Non-durable consumer goods	145.3	0.6	5.3	8.6
2. Capital goods	127.5	1.5	3.6	10.8
3. Intermediate goods	139.1	2.4	-8.5	-7.3
4. Energy <sup>2</sup>	191.6	5.3	-9.5	-21.1

<sup>1</sup> Regulation (EC) no. 656/2007 of the Commission of 14 June 2007.

<sup>2</sup> Except electricity, gas, steam, air conditioning and water supply.

**2. Turnover indices<sup>1</sup>**  
**Calendar adjusted**

	Index	Rate (%)	
		Annual	Year-to-date average
<b>TOTAL INDEX</b>	<b>144.0</b>	<b>-2.2</b>	<b>-0.9</b>
1. Consumer goods	145.0	4.2	7.9
1.1. Durable consumer goods	126.0	-7.1	-2.8
1.2. Non-durable consumer goods	146.1	4.8	8.5
2. Capital goods	131.5	3.6	11.4
3. Intermediate goods	140.9	-8.4	-7.3
4. Energy <sup>2</sup>	196.2	-9.3	-21.9

<sup>1</sup> Regulation (EC) no. 656/2007 of the Commission of 14 June 2007.

<sup>2</sup> Except electricity, gas, steam, air conditioning and water supply.

### 3. Turnover indices, Total and by activities Unadjusted

	Index	Rate (%)		Effect
		Annual	Year-to-date average	Annual
<b>TOTAL INDEX</b>	<b>141.5</b>	<b>-5.7</b>	<b>-1.0</b>	
<b>1. CONSUMER GOODS</b>	<b>142.4</b>	<b>0.1</b>	<b>7.7</b>	<b>0.032</b>
1.1. Durable consumer goods	123.3	-11.0	-2.9	-0.187
- Manufacture of consumer electronics, optical instruments and photographic equipment	148.7	0.4	9.8	0.000
- Manufacture of household appliances	94.8	-24.7	-9.6	-0.117
- Manufacture of motorcycles, bicycles, vehicles for the disabled and others	204.4	-35.0	-5.5	-0.049
- Manufacture of furniture	132.0	0.0	0.3	0.000
- Manufacture of jewellery, costume jewellery and musical instruments	126.4	-14.8	-6.3	-0.021
1.2. Non-durable consumer goods	143.6	0.8	8.4	0.219
- Food industries (except grain mill products and food for animals)	153.6	2.8	10.2	0.476
- Manufacture of beverages	124.6	-5.0	7.5	-0.153
- Manufacture of tobacco	61.3	11.2	9.4	0.005
- Manufacture of knitted fabrics, carpets, rope, non-woven fabrics, textile products for technical use and industrial and other textile products	113.4	-8.5	-3.1	-0.046
- Manufacture of garments	116.0	-12.7	5.9	-0.114
- Leather and footwear industry	96.9	-16.2	-5.8	-0.123
- Graphic arts and reproduction of recorded media	97.2	-7.1	3.7	-0.060
- Manufacture of cleaning articles, perfumes and cosmetics	164.7	0.7	8.0	0.011
- Manufacture of pharmaceutical products	157.4	9.2	8.7	0.257
- Manufacture of sporting goods; games and toys and Other manufacturing industries	113.1	-10.6	-7.0	-0.035
<b>2. CAPITAL GOODS</b>	<b>129.0</b>	<b>-0.3</b>	<b>11.2</b>	<b>-0.066</b>
- Manufacture of metal products for construction, containers made of metal, steam generators, weapons and ammunition	130.8	-12.6	1.3	-0.275
- Manufacture of computers, peripherals and telecommunications equipment; appliances for measuring and navigation; radiation and medical and therapeutic equipment	163.0	9.8	13.2	0.053
- Manufacture of machinery and equipment n.e.c.	131.9	-3.4	6.0	-0.123
- Manufacture of motor vehicles, trailers and semi-trailers	121.5	-6.5	15.8	-0.802
- Naval, railway, aircraft and spacecraft construction. Combat vehicles	153.0	57.8	11.2	0.969
- Manufacture of medical and dental instruments and supplies	150.3	1.5	3.8	0.005
- Repair and installation of machinery and equipment	130.7	6.7	6.3	0.106
<b>3. INTERMEDIATE GOODS</b>	<b>138.2</b>	<b>-12.0</b>	<b>-7.3</b>	<b>-4.506</b>
- Mining of metal ores	.	.	.	.
- Other mining and quarrying	128.0	-15.0	-4.8	.
- Manufacture of grain mill products, starches, and food for animals	146.1	-14.5	-1.4	-0.479
- Preparation and spinning of textile fibres. Manufacture of woven textiles. Textile finishings	100.1	-14.2	-11.4	-0.053
- Wood and cork industry	136.3	-14.0	-8.2	-0.191
- Paper industry	128.1	-19.8	-11.6	-0.566
- Chemical industry except cleaning articles, perfumes and cosmetics	122.5	-16.7	-20.1	-1.099
- Rubber and plastic material transformation industry	127.1	-10.0	-3.6	-0.393
- Manufacture of other non-metallic ore products	147.7	-8.2	0.7	-0.303
- Metallurgy; manufacture of iron, steel and ferro-alloy products	124.3	-20.4	-17.8	-1.308
- Forging, stamping, embossing and rolling of metals. - Manufacture of tools, hardware goods, containers and other metal products	147.8	-4.5	1.5	-0.201
- Manufacture of electronic components, assembled printed circuits, and magnetic and optical media	224.8	11.3	18.7	0.034
- Manufacture of electrical material and equipment except household appliances	194.6	2.7	17.5	0.090
<b>4. ENERGY<sup>1</sup></b>	<b>195.4</b>	<b>-10.1</b>	<b>-21.9</b>	<b>-1.121</b>
- Extraction of anthracite, coal and lignite	.	.	.	.
- Extraction of crude oil, petroleum and natural gas	.	.	.	.
- Manufacture of coke and refined petroleum products	196.8	-10.1	-21.9	-1.121

<sup>1</sup> Except electricity, gas, steam, air conditioning and water supply.

(.) Data not available due to statistical confidentiality.

#### 4. Turnover indices, Total and by branch of activity Unadjusted

	Index	Rate (%)		Effect Annual
		Annual	Year-to-date average	
<b>TOTAL INDEX</b>	<b>141.5</b>	<b>-5.7</b>	<b>-1.0</b>	
<b>B. Mining and quarrying industries</b>	<b>152.2</b>	<b>-5.1</b>	<b>-6.7</b>	<b>-0.038</b>
Extraction of anthracite, coal and lignite	.	.	.	.
Extraction of crude oil, petroleum and natural gas	.	.	.	.
Mining of metal ores	.	.	.	.
Other mining and quarrying	128.0	-15.0	-4.8	.
<b>C. Manufacturing industry</b>	<b>141.5</b>	<b>-5.7</b>	<b>-0.9</b>	<b>-5.624</b>
Food industry	152.5	0.0	8.3	-0.003
Manufacture of beverages	124.6	-5.0	7.5	-0.153
Manufacture of tobacco	61.3	11.2	9.4	0.005
Textile industry	107.7	-10.8	-6.5	-0.100
Manufacture of garments	116.0	-12.7	5.9	-0.114
Leather and footwear industry	96.9	-16.2	-5.8	-0.123
Manufacture of wood and of products of wood and cork, except furniture; base	136.3	-14.0	-8.2	-0.191
Paper industry	128.1	-19.8	-11.6	-0.566
Graphic arts and reproduction of recorded media	97.2	-7.1	3.7	-0.060
Manufacture of coke and refined petroleum products	196.8	-10.1	-21.9	-1.121
Chemical industry	130.1	-13.3	-15.1	-1.088
Manufacture of pharmaceutical products	157.4	9.2	8.7	0.257
Rubber and plastic material transformation industry	127.1	-10.0	-3.6	-0.393
Manufacture of other non-metallic ore products	147.7	-8.2	0.7	-0.303
Metallurgy; manufacture of iron, steel and ferro-alloy products	124.3	-20.4	-17.8	-1.308
Manufacture of metal products, except machinery and equipment	142.1	-7.2	1.4	-0.476
Manufacture of computer, electronic and optical products	179.2	9.8	15.0	0.088
Manufacture of electrical material and equipment	177.3	-0.7	13.9	-0.026
Manufacture of machinery and equipment n.e.c.	131.9	-3.4	6.0	-0.123
Manufacture of motor vehicles, trailers and semi-trailers	121.5	-6.5	15.8	-0.802
Manufacture of other transport material	154.3	50.6	10.2	0.920
Manufacture of furniture	132.0	0.0	0.3	0.000
Other manufacturing industries	130.1	-6.1	-2.2	-0.050
Repair and installation of machinery and equipment	130.7	6.7	6.3	0.106

(.) Data not available due to statistical confidentiality.

#### 5. Turnover indices, Total and by branch of activity Unadjusted

	Index	Rate (%)	
		Annual	Year-to-date average
<b>GENERAL INDEX</b>	<b>141.5</b>	<b>-5.7</b>	<b>-1.0</b>
1. Domestic market	141.4	-6.0	-1.4
2. Non domestic market	138.3	-5.9	0.6
2.1. Non domestic market, euro area	135.2	-6.1	1.0
2.2. Non domestic market, non euro area	142.4	-5.5	0.5



**6. Turnover indices, National and by Autonomous Community  
Unadjusted**

	Index	Rate (%)	
		Annual	Year-to-date average
<b>NATIONAL</b>	<b>141.5</b>	<b>-5.7</b>	<b>-1.0</b>
Andalucía	150.0	-3.5	-8.6
Aragón	127.0	-17.3	-3.4
Asturias, Principado de	139.4	-5.3	-9.0
Balears, Illes	102.5	-9.6	-3.0
Canarias	120.8	2.0	8.9
Cantabria	121.5	-14.9	-6.6
Castilla y León	131.1	-0.5	3.4
Castilla - La Mancha	140.2	-4.2	1.0
Cataluña	132.4	-7.0	2.1
Comunitat Valenciana	138.4	-11.5	-5.2
Extremadura	162.0	-6.4	1.8
Galicia	138.8	-18.3	-2.6
Madrid, Comunidad de	136.9	4.7	3.9
Murcia, Región de	191.3	-8.1	-11.3
Navarra, Comunidad Foral de	167.1	4.2	11.1
País Vasco	158.5	4.0	3.7
Rioja, La	115.5	3.7	5.4