

18 September 2013

Industrial New Orders Received Indices (INORI). Base 2010
July 2013. *Provisional data*

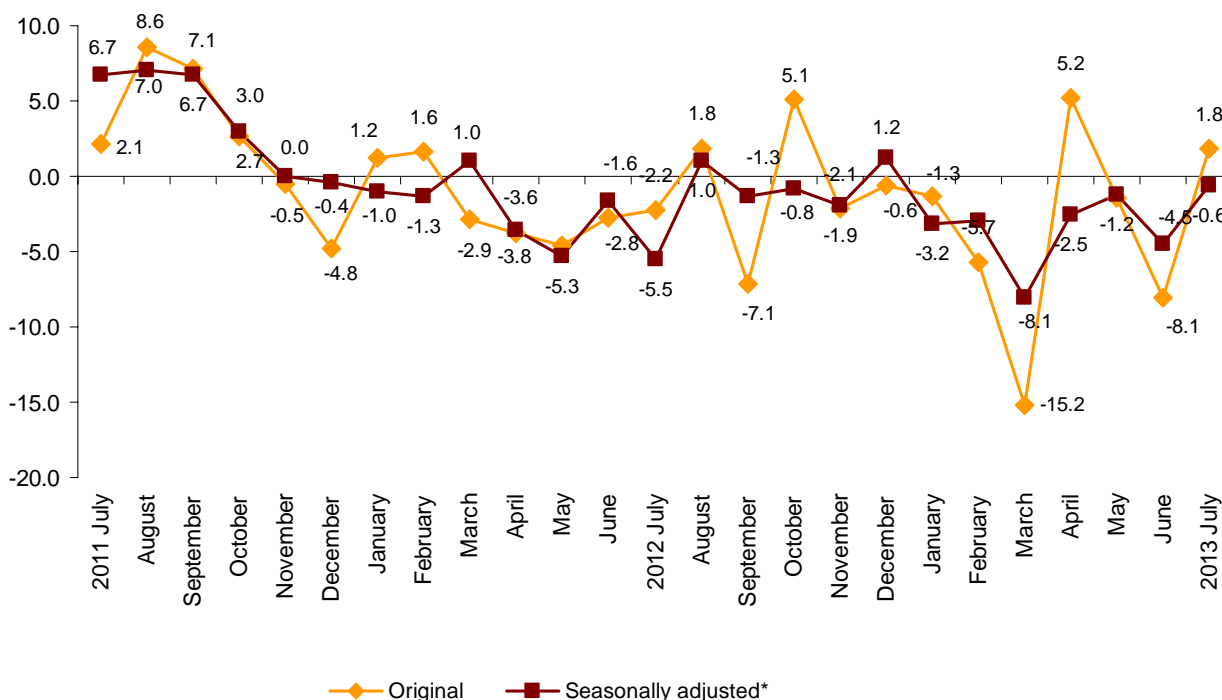
The annual rate of the General Industrial New Orders Received Index stands at -0.6% in the series adjusted for the seasonal and calendar effects and at 1.8% in the original series

The monthly variation stands at 0.4% , adjusted for the seasonal and calendar effects

The Industrial New Orders Received Index (INORI) registered an annual variation of 1.8% in July, almost ten points over that registered in June.

After adjusting the seasonal and calendar effects, the annual rate stood at -0.6% , almost four points higher than that registered in June.

General Index of Industrial New Orders Received
Annual rate



* Seasonally adjusted: Adjusted for seasonal and calendar effects.

Annual evolution of the New Orders Received by economic destination of the goods

Energy (–5.9%) and Durable consumer goods (–4.8%) registered negative annual rates in July. In turn, the other three sectors registered increases, as compared with July 2012 and it is worth noting the decrease in Capital goods (7.9%).

After adjusting the seasonal and calendar effects, Capital goods (5.9%) was the only sector with a positive evolution, as compared with July of the previous year. Non-durable consumer goods stood the same, and the other sectors decreased, especially Durable consumer goods (–7.9%).

Annual rates of the National indices of the new orders received by economic destination

	Original index	Seasonally adjusted
	Annual rate (%)	Annual rate (%)
GENERAL INDEX	1.8	-0.6
1. CONSUMER GOODS	2.4	-0.4
1.1. Durable consumer goods	-4.8	-7.9
1.2. Non-durable consumer goods	3.0	0.0
2. Capital goods	7.9	5.9
3. Intermediate goods	0.3	-2.4
4. Energy	-5.6	-5.9

A more detailed analysis shows the activities that registered the highest and lowest annual rates in the month of July.

Activities with the highest annual rates of the new orders received

	Original index	Annual rate (%)
Extraction of anthracite, coal and lignite	82.0	138.6
Repair and installation of machinery and equipment	98.3	27.1
Manufacture of computers, peripherals and telecommunications equipment; appliances for measuring and navigation; radiation and medical and therapeutic equipment	82.7	20.4
Naval, railway, aircraft and spacecraft construction. Combat vehicles	84.9	14.4
Manufacture of motor vehicles, trailers and semi-trailers	106.8	10.4

Activities with the lowest annual rates of the new orders received

	Original index	Annual rate (%)
Manufacture of consumer electronics, optical instruments and photographic equipment	8.0	-54.7
Manufacture of motorcycles, bicycles, vehicles for the disabled and others	36.9	-25.7
Manufacture of garments	83.5	-19.8
Manufacture of electronic components, assembled printed circuits, and magnetic and	53.4	-15.5
Manufacture of jewellery, costume jewellery and musical instruments	74.9	-14.3

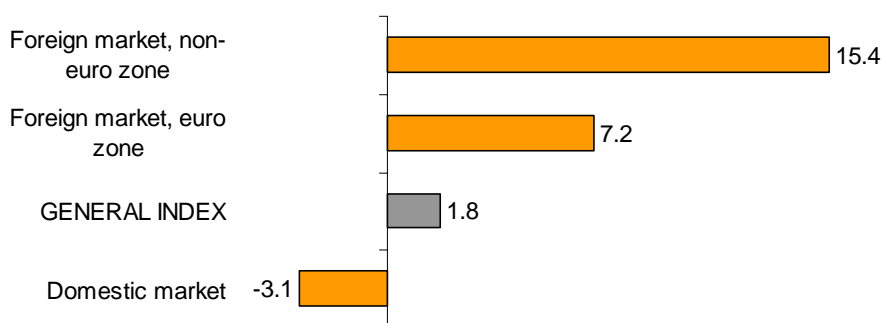
Annual evolution of New Orders Received by destination market

Indices obtained according to the market of which the order was received decreased in Domestic market and increased in Foreign markets, as compared with the same month of the previous year.

The greatest decrease was registered in new orders received from the non-euro zone, which registered an annual rate of 15.4%.

In turn, Domestic market registered a decrease of 3.1% in the new orders received, as compared with July 2012.

Annual rate of INORI General index and by market

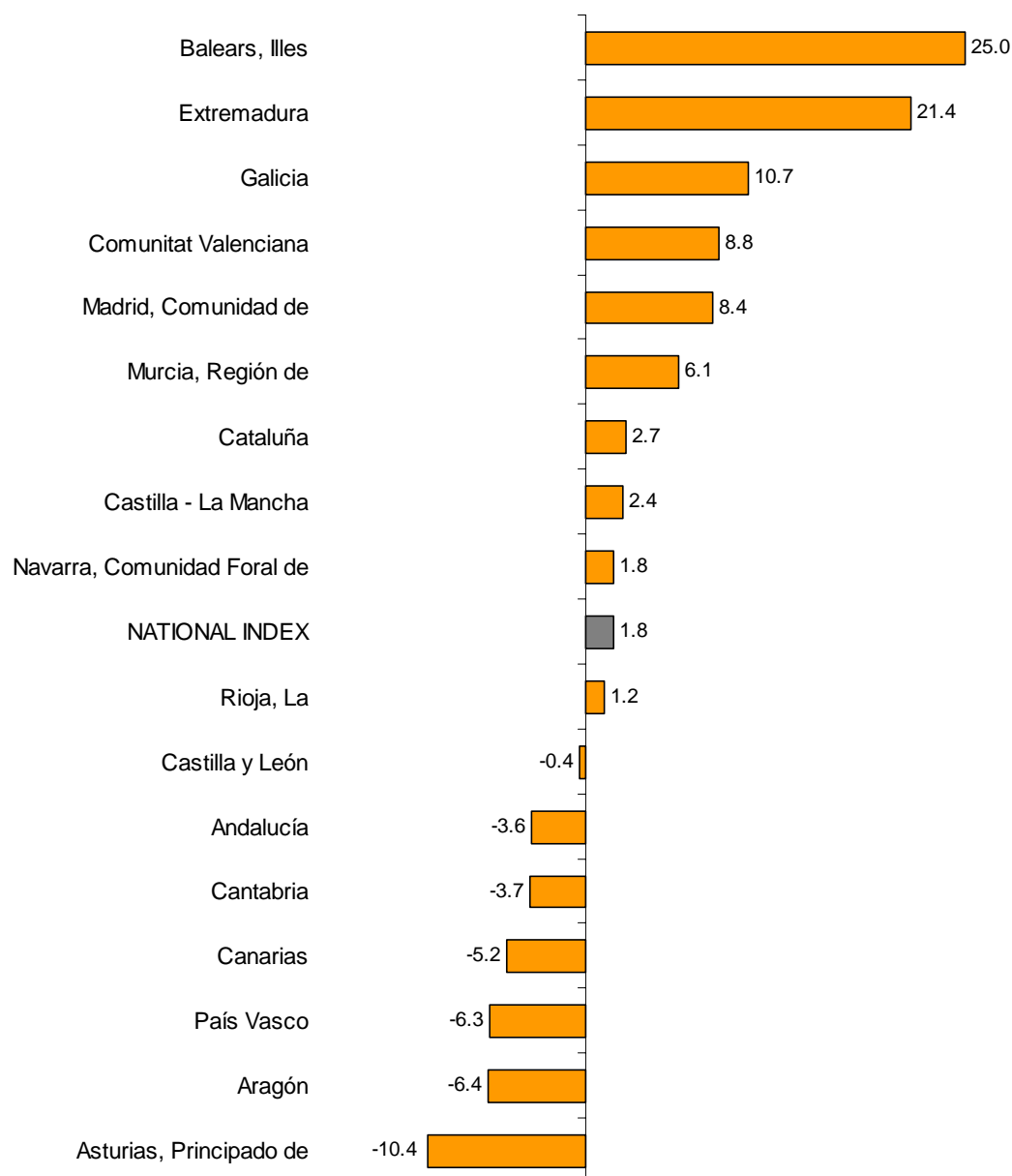


Results by Autonomous Community. Annual variation rate of the new orders received.

Over half the Autonomous Communities registered increases in their new orders received, as compared with July 2012, worth noting, Illes Balears (25.0%) and Extremadura (21.4%).

Regarding decreases, Principado de Asturias –10.4%) registered the greatest decrease.

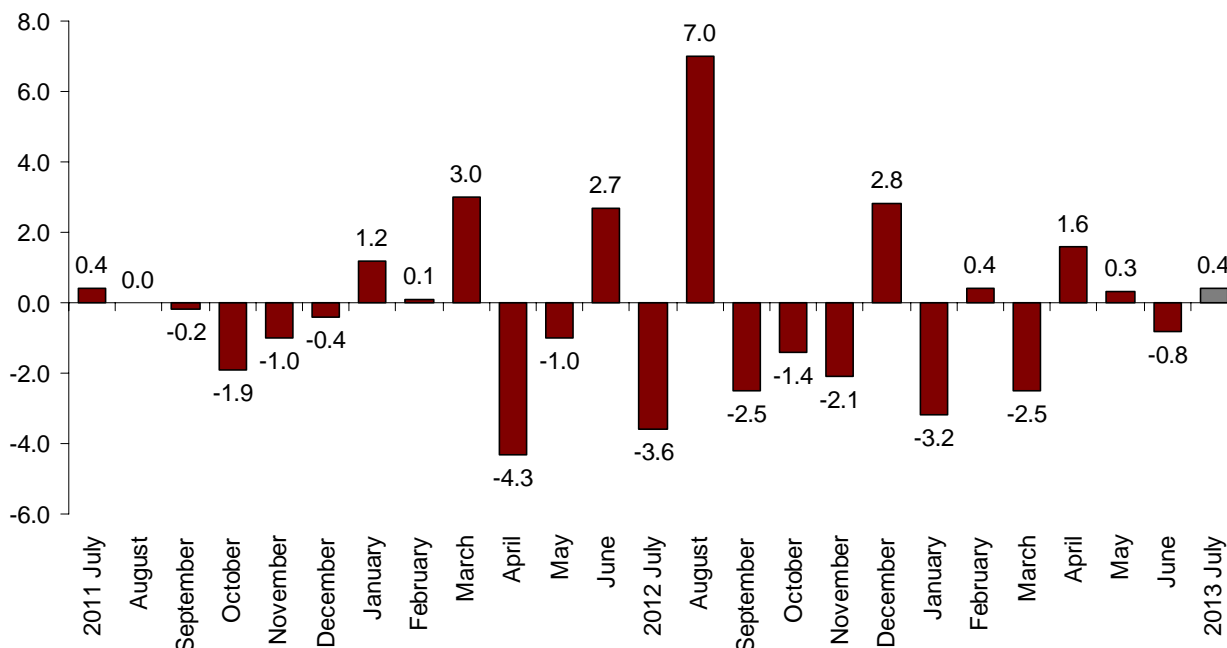
**General Index by Autonomous Community
Annual rate of New Orders Received**



Monthly evolution of the INORI adjusted for the seasonal and calendar effects

The General Industrial New Orders Received Index variation between July and June, after adjusting the seasonal and calendar effects, was 0.4%. This rate was over a point lower than that of June.

General Index of New Orders Received Adjusted the seasonal and calendar effects. Monthly rate



Monthly evolution by destination of the goods

After adjusting the seasonal and calendar effects there were negative monthly rates in three industrial sectors. The other two showed positive rates, worth noting Durable consumer goods (4.4%).

INORI Monthly rate General index and by economic destination adjusted for seasonal and calendar effects



Indices of Industrial New Orders Received. Base 2010

Provisional data

1. Indices of New Orders Received by economic destination¹

	Index	Rate (%)		Effect Annual
		Monthly	Annual	
GENERAL INDEX	106.4	6.7	1.8	
1. CONSUMER GOODS	106.6	11.5	2.4	0.748
1.1. DURABLE CONSUMER GOODS	77.4	16.6	-4.8	-0.107
- Manufacture of consumer electronics, optical instruments and photographic equipment	8.0	7.7	-54.7	-0.030
- Manufacture of household appliances	90.0	9.9	-10.8	-0.076
- Manufacture of motorcycles, bicycles, vehicles for the disabled and others	36.9	18.4	-25.7	-0.022
- Manufacture of furniture	91.7	22.8	3.1	0.039
- Manufacture of jewellery, costume jewellery and musical instruments	74.9	-4.9	-14.3	-0.019
1.2. NON-DURABLE CONSUMER GOODS	109.6	11.1	3.0	0.855
- Food industries (except grain mill products and food for animals)	117.7	10.2	6.9	1.083
- Manufacture of beverages	127.0	22.4	1.4	0.059
- Manufacture of tobacco	83.1	5.1	0.3	0.001
- Manufacture of knitted fabrics, carpets, rope, non-woven fabrics, textile products for technical use and industrial and other textile products	106.2	9.4	8.8	0.055
- Manufacture of garments	83.5	19.4	-19.8	-0.256
- Leather and footwear industry	81.0	-14.7	-10.1	-0.074
- Graphic arts and reproduction of recorded media	60.3	1.9	-9.0	-0.093
- Manufacture of cleaning articles, perfumes and cosmetics	98.8	7.2	0.3	0.005
- Manufacture of pharmaceutical products	104.5	12.1	2.0	0.066
- Manufacture of sporting goods; games and toys and Other manufacturing industries	105.3	10.2	2.7	0.010
2. CAPITAL GOODS	100.2	5.2	7.9	1.650
- Manufacture of metal products for construction, containers made of metal, steam generators, weapons and ammunition	90.3	23.5	3.6	0.090
- Manufacture of computers, peripherals and telecommunications equipment; appliances for measuring and navigation; radiation and medical and therapeutic equipment	82.7	20.5	20.4	0.111
- Manufacture of machinery and equipment n.e.c.	103.9	-0.5	-5.2	-0.204
- Manufacture of motor vehicles, trailers and semi-trailers	106.8	7.3	10.4	1.105
- Naval, railway, aircraft and spacecraft construction. Combat vehicles	84.9	-15.8	14.4	0.269
- Manufacture of medical and dental instruments and supplies	96.1	9.8	-7.7	-0.026
- Repair and installation of machinery and equipment	98.3	8.9	27.1	0.306
3. INTERMEDIATE GOODS	101.0	4.7	0.3	0.118
- Other mining and quarrying	83.8	3.9	-1.0	-0.007
- Manufacture of grain mill products, starches, and food for animals	133.3	8.9	7.3	0.218
- Preparation and spinning of textile fibres. Manufacture of woven textiles. Textile finishings	100.0	3.0	-4.7	-0.025
- Wood and cork industry	106.8	22.4	8.8	0.122
- Paper industry	103.6	0.6	-5.2	-0.151
- Chemical industry except cleaning articles, perfumes and cosmetics	107.7	7.5	-1.0	-0.071
- Rubber and plastic material transformation industry	96.9	3.9	0.2	0.006
- Manufacture of other non-metallic ore products	82.3	1.9	-4.5	-0.171
- Metallurgy; manufacture of iron, steel and ferro-alloy products	95.7	-1.1	-2.1	-0.131
- Forging, stamping, embossing and rolling of metals. - Manufacture of tools, hardware goods, containers and other metal products	106.6	2.2	2.3	0.099
- Manufacture of electronic components, assembled printed circuits, and magnetic and optical media	53.4	-17.8	-15.5	-0.030
- Manufacture of electrical material and equipment except household appliances	101.9	13.5	9.6	0.258
4. ENERGY*	148.9	3.7	-5.6	-0.682
- Extraction of anthracite, coal and lignite	82.0	4.1	138.6	..
- Extraction of crude oil, petroleum and natural gas
- Manufacture of coke and refined petroleum products	149.4	3.7	-6.7	-0.801

¹ Regulation (EC) no. 656/2007 of the Commission of 14 June 2007.

* Except supply of electrical energy, gas, steam, air conditioning and water.

(..) Data not available due to statistical secrecy.

2. National Indices of New Orders Received adjusted for calendar effects

	Original Index	Rate (%)		Adjusted Index	Rate (%)	
		Monthly	Annual		Monthly	Annual
GENERAL INDEX	106.4	6.7	1.8	104.1	-0.5	-0.7
1. Consumer goods	106.6	11.5	2.4	104.1	3.7	-0.4
1.1. Durable consumer goods	77.4	16.6	-4.8	75.5	7.7	-7.5
1.2. Non-durable consumer goods	109.6	11.1	3.0	106.9	3.0	0.0
2. Capital goods	100.2	5.2	7.9	98.5	-0.7	5.8
3. Intermediate goods	101.0	4.7	0.3	98.5	-3.3	-2.5
4. Energy*	148.9	3.7	-5.6	148.1	2.0	-6.2

*Except supply of electrical energy, gas, steam, air conditioning and water.

3. National Indices of New Orders Received adjusted for seasonal and calendar effects

	Original Index	Rate (%)		Adjusted Index	Rate (%)	
		Monthly	Annual		Monthly	Annual
GENERAL INDEX	106.4	6.7	1.8	100.3	0.4	-0.6
1. Consumer goods	106.6	11.5	2.4	98.3	0.4	-0.4
1.1. Durable consumer goods	77.4	16.6	-4.8	69.1	4.4	-7.9
1.2. Non-durable consumer goods	109.6	11.1	3.0	101.1	-0.3	0.0
2. Capital goods	100.2	5.2	7.9	97.1	2.1	5.9
3. Intermediate goods	101.0	4.7	0.3	93.8	-0.3	-2.4
4. Energy*	148.9	3.7	-5.6	142.0	-2.8	-5.9

*Except supply of electrical energy, gas, steam, air conditioning and water.

4. General Index of Industrial New Orders Received adjusted for seasonal and calendar effects

		Rate (%)		
		Annual ¹	Quarterly ²	Monthly ³
2009		-22.0		
2010		6.7		
2011		5.8		
2012		-1.6		
2013		-3.3		
2011	TIII	6.8	-0.2	
	TIV	0.8	-2.8	
2012	TI	-0.4	1.7	
	TII	-3.5	-2.2	
	TIII	-1.9	1.5	
	TIV	-0.5	-1.4	
2013	TI	-4.8	-2.7	
	TII	-2.7	-0.1	
	TIII	-0.6	0.0	
2012	JUL	-5.5		-3.6
	AUG	1.0		7.0
	SEP	-1.3		-2.5
	OCT	-0.8		-1.4
	NOV	-1.9		-2.1
2013	DEC	1.2		2.8
	JAN	-3.2		-3.2
	FEB	-3.0		0.4
	MAR	-8.1		-2.5
	APR	-2.5		1.6
	MAY	-1.2		0.3
	JUN	-4.5		-0.8
	JUL	-0.6		0.4

Note:

¹ **Annual rate:** Variation of a period over the same period of the previous year.

² **Quarterly rate:** Variation of a quarter over the previous quarter.

In the present quarter it is the variation to date over the previous quarter.

³ **Monthly rate:** Variation of a month over the previous month.

5. General Index of Industrial New Orders Received by Autonomous Communities

	Index	Rate (%)		
		Monthly	Annual	Average to date
NATIONAL INDEX	106.4	6.7	1.8	-3.8
Andalucía	110.8	3.9	-3.6	-5.3
Aragón	94.0	10.2	-6.4	-1.1
Asturias, Principado de	91.6	3.3	-10.4	-5.1
Balears, Illes	125.4	36.4	25.0	1.5
Canarias	111.0	9.3	-5.2	-6.7
Cantabria	89.8	-4.8	-3.7	-8.5
Castilla y León	102.1	7.4	-0.4	-6.9
Castilla - La Mancha	119.3	10.6	2.4	-8.1
Cataluña	108.7	7.9	2.7	-2.7
Comunitat Valenciana	120.0	7.1	8.8	5.4
Extremadura	123.6	34.3	21.4	2.8
Galicia	109.6	11.8	10.7	0.6
Madrid, Comunidad de	98.5	14.1	8.4	-9.8
Murcia, Región de	125.3	16.9	6.1	-2.0
Navarra, Comunidad Foral de	85.6	-10.6	1.8	-4.6
País Vasco	94.8	-4.9	-6.3	-9.0
Rioja, La	100.7	11.1	1.2	-6.4

6. General national Index by markets

	Index	Rate (%)		
		Monthly	Annual	Average to date
GENERAL INDEX	106.4	6.7	1.8	-3.8
1. Domestic market	95.0	7.7	-3.1	-6.7
2. Foreign market	125.1	6.5	10.0	0.4
2.1. Foreign market, euro zone	113.8	6.3	7.2	1.1
2.2. Foreign market, non-euro zone	144.6	6.4	15.4	-2.1

7. National Indices of Industrial New Orders Received by branch of activity (CNAE 2009)

	Index	Rate (%)		Effect Annual
		Monthly	Annual	
GENERAL INDEX	106.4	6.7	1.8	
B. Mining and quarrying industries	89.9	4.2	15.3	0.112
Extraction of anthracite, coal and lignite	82.0	4.1	138.6	..
Extraction of crude oil, petroleum and natural gas
Other mining and quarrying	83.8	3.9	-1.0	-0.007
C. Manufacturing industry	106.6	6.7	1.7	1.722
Food industry	119.9	10.0	6.9	1.301
Manufacture of beverages	127.0	22.4	1.4	0.059
Manufacture of tobacco	83.1	5.1	0.3	0.001
Textile industry	103.5	6.6	2.6	0.030
Manufacture of garments	83.5	19.4	-19.8	-0.256
Leather and footwear industry	81.0	-14.7	-10.1	-0.074
Manufacture of wood and of products of wood and cork, except furniture; basketmaking and wickerwork	106.8	22.4	8.8	0.122
Paper industry	103.6	0.6	-5.2	-0.151
Graphic arts and reproduction of recorded media	60.3	1.9	-9.0	-0.093
Manufacture of coke and refined petroleum products	149.4	3.7	-6.7	-0.801
Chemical industry	106.1	7.4	-0.8	-0.066
Manufacture of pharmaceutical products	104.5	12.1	2.0	0.066
Rubber and plastic material transformation industry	96.9	3.9	0.2	0.006
Manufacture of other non-metallic ore products	82.3	1.9	-4.5	-0.171
Metallurgy; manufacture of iron, steel and ferro-alloy products	95.7	-1.1	-2.1	-0.131
Manufacture of metal products, except machinery and equipment	100.0	9.2	2.8	0.189
Manufacture of computer, electronic and optical products	59.9	10.1	6.4	0.050
Manufacture of electrical material and equipment	99.6	12.9	5.4	0.183
Manufacture of machinery and equipment n.e.c.	103.9	-0.5	-5.2	-0.204
Manufacture of motor vehicles, trailers and semi-trailers	106.8	7.3	10.4	1.105
Manufacture of other transport material	81.8	-15.1	12.6	0.247
Manufacture of furniture	91.7	22.8	3.1	0.039
Other manufacturing industries	96.3	7.7	-4.2	-0.035
Repair and installation of machinery and equipment	98.3	8.9	27.1	0.306

(..) Data not available due to statistical secrecy.

For further information see **INEbase** - www.ine.es/en/ All press releases at: www.ine.es/en/prensa/prensa_en.htm

Press Office: Telephone numbers: 91 583 93 63 / 94 08 – Fax: 91 583 90 87 - gprensa@ine.es

Information Area: Telephone number: 91 583 91 00 – Fax: 91 583 91 58 – www.ine.es/infoine