

21 November 2018

**Industrial New Orders Received Indices (INORI). Base 2015**  
September 2018. Provisional data

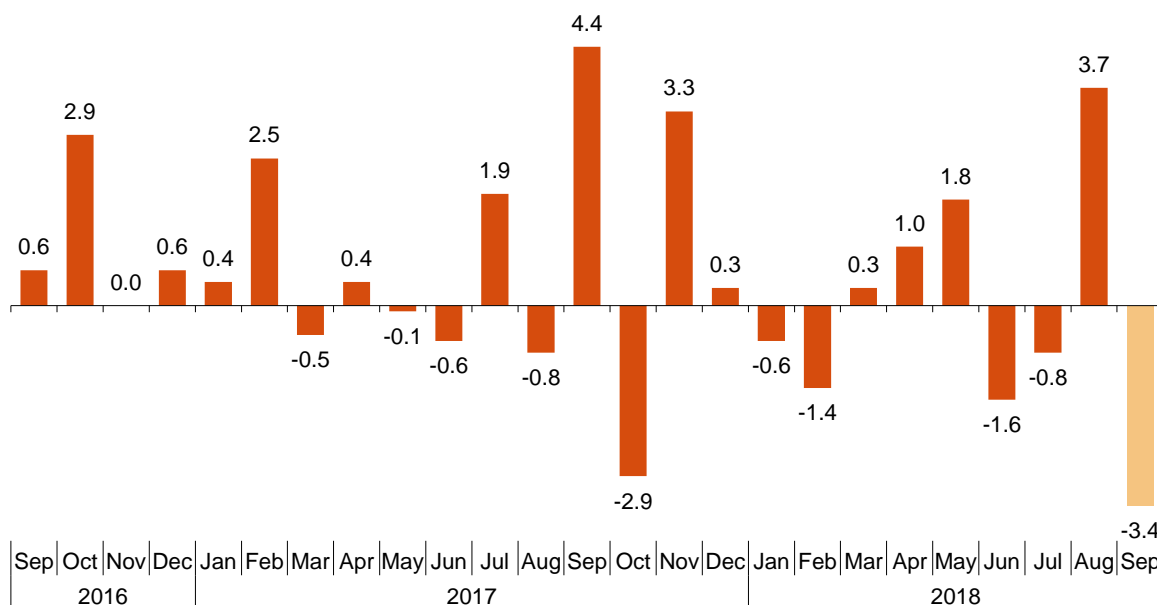
**The monthly variation of the Total Industrial New Orders Received Index<sup>1</sup> stands at -3.4%, after seasonal and calendar adjustment**

**The annual rate stands at -0.5% in the seasonal and calendar adjusted series and at -3.2% in the original series**

**Monthly trend of Industrial New Orders Received**

The monthly variation of the seasonally and calendar adjusted Industrial New Orders Received Index between September and August stood at -3.4%. This rate was 7.1 points lower than the previous month.

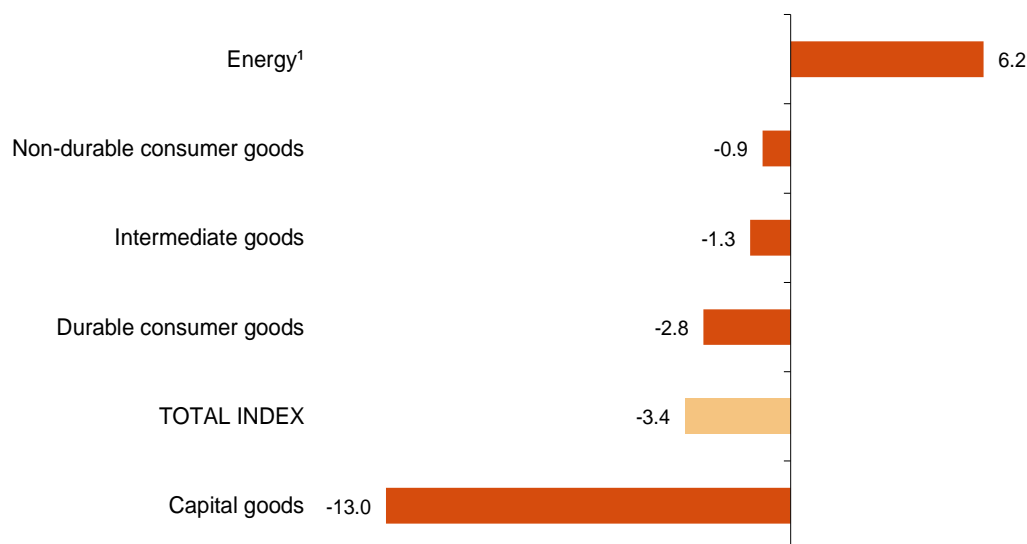
**Industrial New Orders Received Index, Total**  
**Seasonally and calendar adjusted. September 2018. Monthly rate**



<sup>1</sup> As reflected in the methodology of this value index, the information is presented in current terms (nominal terms), this is, without adjusting the price variation effects.

By Main Industrial Groupings (MIGs), four of the five sectors showed negative monthly rates. It is worth highlighting the decrease in *Capital goods* (-13.0%). The only sector that increased was *Energy*<sup>2</sup> (6.2%).

**Industrial New Orders Received Indices, Total and by MIGs**  
Seasonally and calendar adjusted. September 2018. Monthly rate



<sup>1</sup> Except electricity, gas, steam, air conditioning and water supply.

A more detailed analysis showed the branches of activity with the highest and the lowest monthly rates in the month of September.

**Branches of activity with the highest monthly rates of the Industrial New Orders Received Index, Seasonally and calendar adjusted**

Branch of activity (Division of the CNAE 2009)	Monthly rate (%)
Graphic arts and reproduction of recorded media	12.5
Manufacture of coke and refined petroleum products	8.9
Leather and footwear industry	8.7

**Branches of activity with the lowest monthly rates of the Industrial New Orders Received Index, Seasonally and calendar adjusted**

Branch of activity (Division of the CNAE 2009)	Monthly rate (%)
Extraction of anthracite, coal and lignite	-19.7
Manufacture of computer, electronic and optical products	-16.1
Manufacture of machinery and equipment n.e.c.	-15.3

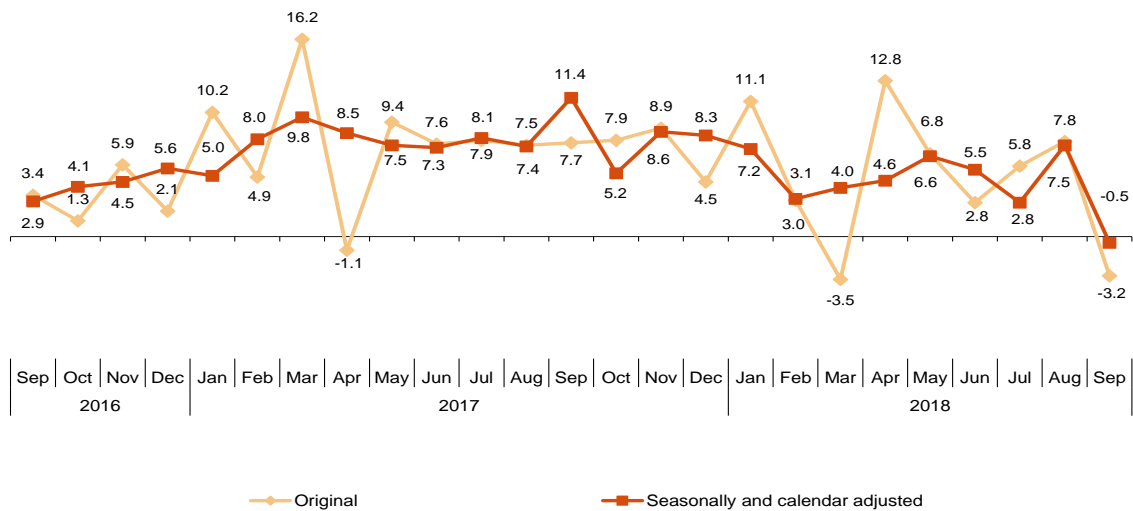
<sup>2</sup> Except electricity, gas, steam, air conditioning and water supply.

### Annual trend of Industrial New Orders Received

The Total Industrial New Orders Received Index, once adjusted for seasonal and calendar effects, showed a variation of  $-0.5\%$  in September, as compared with the same month of the previous year. This rate was eight points lower than the one registered in August.

The INORI original series of the registered an annual variation of  $-3.2\%$ . This rate was 11.0 points lower than the one in August.

### Industrial New Orders Received Index, Total Seasonally and calendar adjusted. September 2018. Annual rates



By MIGs, the seasonally and calendar adjusted indices registered negative annual rates in three of five of the analysed sectors, highlighting the decrease in *Capital goods* ( $-11.4\%$ ).

### Industrial New Orders Received Index, Total and by MIGs. Annual rates

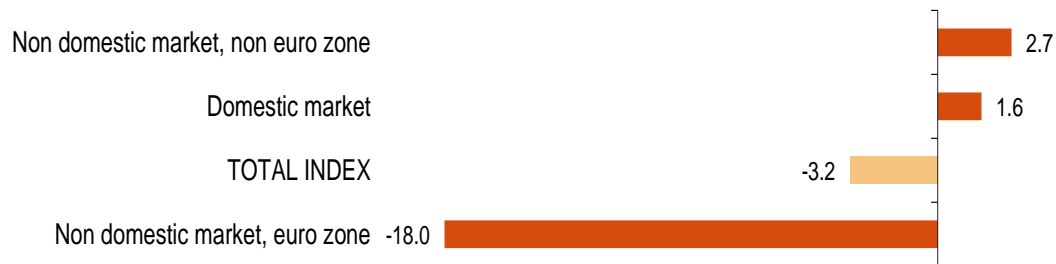
	Unadjusted index	Seasonally and calendar adjusted index
	Annual rate (%)	Annual rate (%)
<b>TOTAL INDEX</b>	<b>-3.2</b>	<b>-0.5</b>
1. Consumer goods	-5.0	-1.8
1.1. Durable consumer goods	-5.3	-2.2
1.2. Non-durable consumer goods	-5.0	-1.9
2. Capital goods	-13.7	-11.4
3. Intermediate goods	-1.6	1.6
4. Energy <sup>1</sup>	35.0	35.4

<sup>1</sup> Except electricity, gas, steam, air conditioning and water supply.

### Annual trend of the Industrial New Orders Received by market. Original series

In September positive annual rates were observed in two of the analysed markets. It is worth noting the decrease registered in the euro area in the non-domestic market (-18.0%).

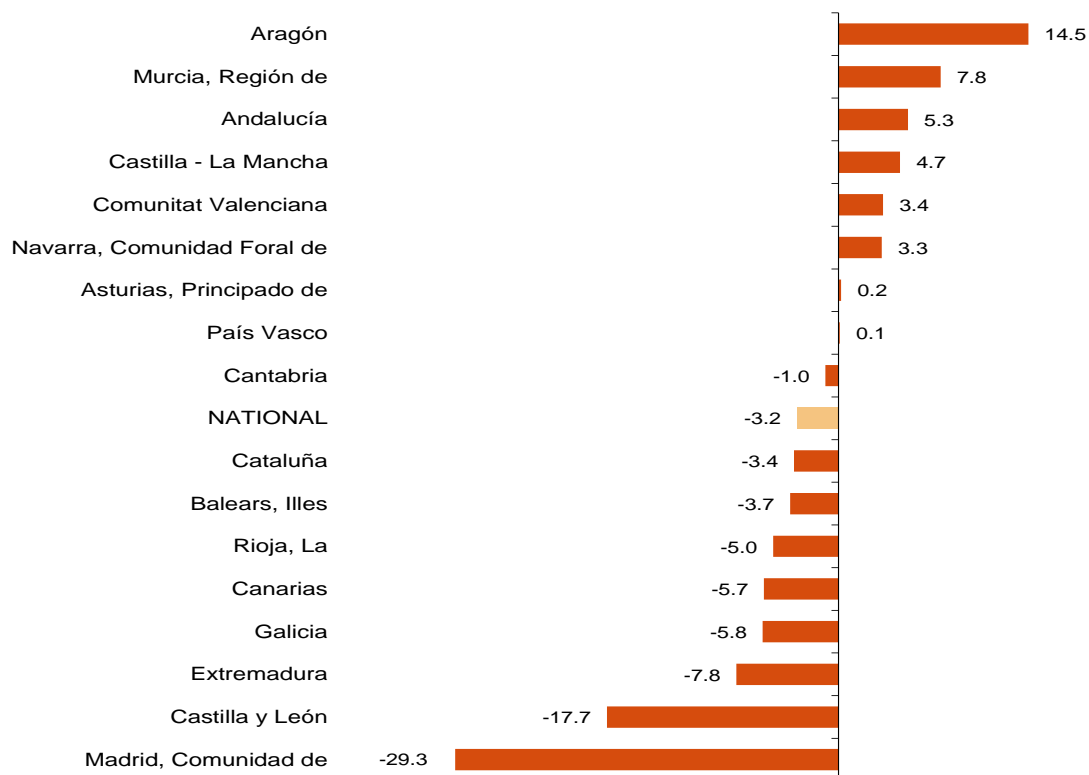
#### Industrial New Orders Received Index, Total and by market September 2018. Annual rate



### Results by Autonomous Community. Annual rate of the Industrial New Orders Received. Original series

New orders received increased as compared to September 2017 in eight Autonomous Communities and decreased in the other nine. The largest decreases were recorded in Comunidad de Madrid (-29.3%), Castilla y León (-17.7%) and Extremadura (-7.8%). The largest increases were recorded in Aragón (14.5%), Región de Murcia (7.8%) and Andalucía (5.3%).

#### Industrial New Orders Received Index, Total and by Autonomous Community September 2018. Annual rate



## Revisions and data update

On the press release day, INE has updated INORI data series corresponding to the last 13 months. In the case of calendar adjusted and seasonally and calendar adjusted series, according to INE standard, the series are revised since its beginning. The results are available at INEBase.

## Methodological note

Industrial New Orders Received Indices (INORI) are short-term indicators aiming at measuring the monthly evolution of the industrial sector, excluding the construction.

The required information is collected since January 2002, together with the Industrial Turnover Indices (ITI) through a survey addressed to more than 12.000 industrial establishments throughout the country.

**Survey Type:** ongoing monthly.

**Base year:** 2015.

**Population scope:** units of economic activity whose main activity is included in Sections B: Extractive industries (with the exception, due to their not being relevant to Spanish industry, of division 09) or C: Manufacturing industry of CNAE-2009.

**Geographical scope:** the whole country, excluding Ceuta and Melilla.

**Sample size:** Approx. 12,000 establishments.

**Data collection:** monthly, value of total business turnover broken down by market.

**Collection method:** fill in a questionnaire by the respondent using one of the following methods: internet (IRIA system), email, fax, telephone or post.

Further information is available in the methodology:

[http://www.ine.es/dyngs/INEbase/en/operacion.htm?c=Estadistica\\_C&cid=1254736148149&menu=metodologia&idp=1254735576715](http://www.ine.es/dyngs/INEbase/en/operacion.htm?c=Estadistica_C&cid=1254736148149&menu=metodologia&idp=1254735576715)

And in the standardized methodological report:

<http://www.ine.es/dynt3/metadatos/en/RespuestaDatos.html?oe=30053>

---

For further information see **INEbase:** [www.ine.es/en/](http://www.ine.es/en/) Twitter: [@es\\_ine](https://twitter.com/es_ine)

All press releases at: [www.ine.es/en/prensa/prensa\\_en.htm](http://www.ine.es/en/prensa/prensa_en.htm)

---

**Press office:** Telephone numbers: (+34) 91 583 93 63 /94 08 – [gprensa@ine.es](mailto:gprensa@ine.es)

**Information Area:** Telephone number: (+34) 91 583 91 00 – [www.ine.es/infoine/?L=1](http://www.ine.es/infoine/?L=1)

---

## Industrial New Orders Received Index. Base 2015 September 2018

Provisional data

### 1. New Orders Received indices<sup>1</sup> Seasonally and calendar adjusted

	Index	Rate (%)		
		Monthly	Annual	Year-to-date average
<b>TOTAL INDEX</b>	<b>112.1</b>	<b>-3.4</b>	<b>-0.5</b>	<b>4.5</b>
1. Consumer goods	108.2	-0.9	-1.8	0.2
1.1. Durable consumer goods	109.5	-2.8	-2.2	0.9
1.2. Non-durable consumer goods	108.0	-0.9	-1.9	0.1
2. Capital goods	104.8	-13.0	-11.4	1.7
3. Intermediate goods	113.7	-1.3	1.6	6.1
4. Energy <sup>2</sup>	144.7	6.2	35.4	25.3

<sup>1</sup> Regulation (EC) no. 656/2007 of the Commission of 14 June 2007.

<sup>2</sup> Except electricity, gas, steam, air conditioning and water supply.

### 2. New Orders Received indices<sup>1</sup> Calendar adjusted

	Index	Rate (%)	
		Annual	Year-to-date average
<b>TOTAL INDEX</b>	<b>114.1</b>	<b>-0.7</b>	<b>4.4</b>
1. Consumer goods	110.5	-2.1	0.0
1.1. Durable consumer goods	114.9	-2.3	0.8
1.2. Non-durable consumer goods	110.3	-2.0	0.0
2. Capital goods	107.1	-11.7	1.3
3. Intermediate goods	114.9	1.3	6.1
4. Energy <sup>2</sup>	148.4	35.8	25.9

<sup>1</sup> Regulation (EC) no. 656/2007 of the Commission of 14 June 2007.

<sup>2</sup> Except electricity, gas, steam, air conditioning and water supply.

### 3. New Orders Received indices, Total and by activities Unadjusted

	Index	Rate (%)		Effect
		Annual	Year-to-date average	Annual
<b>TOTAL INDEX</b>	<b>109.6</b>	<b>-3.2</b>	<b>4.5</b>	
<b>1. CONSUMER GOODS</b>	<b>105.3</b>	<b>-5.0</b>	<b>0.2</b>	<b>-1.509</b>
1.1. Durable consumer goods	109.3	-5.3	0.8	-0.101
- Manufacture of consumer electronics, optical instruments and photographic equipment	103.2	-0.2	5.5	0.000
- Manufacture of household appliances	98.8	-6.3	-4.0	-0.033
- Manufacture of motorcycles, bicycles, vehicles for the disabled and others	143.3	4.3	4.6	0.003
- Manufacture of furniture	113.9	-6.2	2.7	-0.069
- Manufacture of jewellery, costume jewellery and musical instruments	103.7	-1.7	-0.2	-0.002
1.2. Non-durable consumer goods	105.1	-5.0	0.1	-1.408
- Food industries (except grain mill products and food for animals)	102.6	-6.9	-1.2	-1.126
- Manufacture of beverages	107.0	-0.5	3.7	-0.017
- Manufacture of tobacco	51.5	-14.4	-0.1	-0.009
- Manufacture of knitted fabrics, carpets, rope, non-woven fabrics, textile products for technical use and industrial and other textile products	106.5	-4.8	2.5	-0.031
- Manufacture of garments	99.9	-16.4	-3.1	-0.174
- Leather and footwear industry	124.6	-5.0	2.6	-0.057
- Graphic arts and reproduction of recorded media	100.7	12.9	-0.7	0.124
- Manufacture of cleaning articles, perfumes and cosmetics	131.9	6.4	5.9	0.105
- Manufacture of pharmaceutical products	99.7	-8.2	0.6	-0.227
- Manufacture of sporting goods; games and toys and Other manufacturing industries	123.7	1.1	-2.8	0.005
<b>2. CAPITAL GOODS</b>	<b>103.2</b>	<b>-13.7</b>	<b>1.5</b>	<b>-3.737</b>
- Manufacture of metal products for construction, containers made of metal, steam generators, weapons and ammunition	103.3	18.1	-2.2	0.306
- Manufacture of computers, peripherals and telecommunications equipment; appliances for measuring and navigation; radiation and medical and therapeutic equipment	104.4	-28.1	5.9	-0.199
- Manufacture of machinery and equipment n.e.c.	105.0	-2.1	3.4	-0.077
- Manufacture of motor vehicles, trailers and semi-trailers	102.9	-10.1	2.3	-1.449
- Naval, railway, aircraft and spacecraft construction. Combat vehicles	102.8	-49.4	-3.4	-2.304
- Manufacture of medical and dental instruments and supplies	109.6	1.2	4.1	0.004
- Repair and installation of machinery and equipment	101.0	-1.1	0.1	-0.018
<b>3. INTERMEDIATE GOODS</b>	<b>109.7</b>	<b>-1.6</b>	<b>6.2</b>	<b>-0.568</b>
- Mining of metal ores	.	.	.	.
- Other mining and quarrying	105.7	5.6	3.3	.
- Manufacture of grain mill products, starches, and food for animals	106.1	-1.0	5.1	-0.027
- Preparation and spinning of textile fibres. Manufacture of woven textiles. Textile finishings	99.0	-7.9	-0.7	-0.036
- Wood and cork industry	115.0	7.8	5.2	0.094
- Paper industry	103.2	-1.5	4.6	-0.038
- Chemical industry except cleaning articles, perfumes and cosmetics	108.0	-0.9	5.1	-0.059
- Rubber and plastic material transformation industry	107.5	-4.8	2.9	-0.199
- Manufacture of other non-metallic ore products	110.3	3.5	6.1	0.113
- Metallurgy; manufacture of iron, steel and ferro-alloy products	114.9	-3.7	10.5	-0.238
- Forging, stamping, embossing and rolling of metals. - Manufacture of tools, hardware goods, containers and other metal products	113.8	-5.9	6.6	-0.269
- Manufacture of electronic components, assembled printed circuits, and magnetic and optical media	104.6	5.3	-1.3	0.011
- Manufacture of electrical material and equipment except household appliances	105.1	3.3	10.4	0.080
<b>4. ENERGY<sup>1</sup></b>	<b>147.0</b>	<b>35.0</b>	<b>25.9</b>	<b>2.585</b>
- Extraction of anthracite, coal and lignite	57.5	-25.9	-18.7	.
- Extraction of crude oil, petroleum and natural gas	.	.	.	.
- Manufacture of coke and refined petroleum products	147.7	35.2	26.1	2.592

<sup>1</sup> Except electricity, gas, steam, air conditioning and water supply.

(.) Data not available due to statistical secrecy.

#### 4. New Orders Received indices, Total and by branch of activity Unadjusted

	Index	Rate (%)		Effect Annual
		Annual	Year-to-date average	
<b>TOTAL INDEX</b>	<b>109.6</b>	<b>-3.2</b>	<b>4.5</b>	
<b>B. Mining and quarrying industries</b>	<b>118.9</b>	<b>-0.9</b>	<b>1.7</b>	<b>-0.006</b>
Extraction of anthracite, coal and lignite	57.5	-25.9	-18.7	.
Extraction of crude oil, petroleum and natural gas	.	.	.	.
Mining of metal ores	.	.	.	.
Other mining and quarrying	105.7	5.6	3.3	.
<b>C. Manufacturing industry</b>	<b>109.5</b>	<b>-3.2</b>	<b>4.6</b>	<b>-3.222</b>
Food industry	103.1	-6.0	-0.3	-1.153
Manufacture of beverages	107.0	-0.5	3.7	-0.017
Manufacture of tobacco	51.5	-14.4	-0.1	-0.009
Textile industry	103.3	-6.1	1.2	-0.068
Manufacture of garments	99.9	-16.4	-3.1	-0.174
Leather and footwear industry	124.6	-5.0	2.6	-0.057
Manufacture of wood and of products of wood and cork, except furniture; basketmaking and wickerwork	115.0	7.8	5.2	0.094
Paper industry	103.2	-1.5	4.6	-0.038
Graphic arts and reproduction of recorded media	100.7	12.9	-0.7	0.124
Manufacture of coke and refined petroleum products	147.7	35.2	26.1	2.592
Chemical industry	112.4	0.6	5.3	0.046
Manufacture of pharmaceutical products	99.7	-8.2	0.6	-0.227
Rubber and plastic material transformation industry	107.5	-4.8	2.9	-0.199
Manufacture of other non-metallic ore products	110.3	3.5	6.1	0.113
Metallurgy; manufacture of iron, steel and ferro-alloy products	114.9	-3.7	10.5	-0.238
Manufacture of metal products, except machinery and equipment	110.2	0.6	3.9	0.037
Manufacture of computer, electronic and optical products	104.4	-19.9	4.1	-0.189
Manufacture of electrical material and equipment	104.0	1.6	8.0	0.047
Manufacture of machinery and equipment n.e.c.	105.0	-2.1	3.4	-0.077
Manufacture of motor vehicles, trailers and semi-trailers	102.9	-10.1	2.3	-1.449
Manufacture of other transport material	103.8	-48.5	-3.2	-2.300
Manufacture of furniture	113.9	-6.2	2.7	-0.069
Other manufacturing industries	114.8	0.7	0.3	0.007
Repair and installation of machinery and equipment	101.0	-1.1	0.1	-0.018

(.) Data not available due to statistical secrecy.

#### 5. New Orders Received indices, Total and by branch of activity Unadjusted

	Index	Rate (%)	
		Annual	Year-to-date average
<b>GENERAL INDEX</b>	<b>109.6</b>	<b>-3.2</b>	<b>4.5</b>
1. Domestic market	112.0	1.6	5.8
2. Non domestic market	105.6	-9.6	2.1
2.1. Non domestic market, euro area	104.2	-18.0	0.6
2.2. Non domestic market, non euro area	108.3	2.7	2.9



**6. New Orders Received indices, National and by Autonomous Community  
Unadjusted**

	Index	Rate (%)	
		Annual	Year-to-date average
<b>NATIONAL</b>	<b>109.6</b>	<b>-3.2</b>	<b>4.5</b>
Andalucía	115.7	5.3	4.0
Aragón	128.2	14.5	7.2
Asturias, Principado de	113.6	0.2	11.5
Baleares, Illes	101.4	-3.7	-3.7
Canarias	96.9	-5.7	-0.3
Cantabria	109.9	-1.0	6.2
Castilla y León	94.8	-17.7	1.2
Castilla - La Mancha	113.8	4.7	6.9
Cataluña	107.7	-3.4	4.6
Comunitat Valenciana	117.0	3.4	5.2
Extremadura	115.9	-7.8	8.0
Galicia	108.7	-5.8	2.7
Madrid, Comunidad de	96.2	-29.3	-4.7
Murcia, Región de	115.7	7.8	18.3
Navarra, Comunidad Foral de	98.9	3.3	9.6
País Vasco	111.9	0.1	4.9
Rioja, La	93.8	-5.0	0.8