

20 December 2018

Industrial New Orders Received Indices (INORI). Base 2015

October 2018. Provisional data

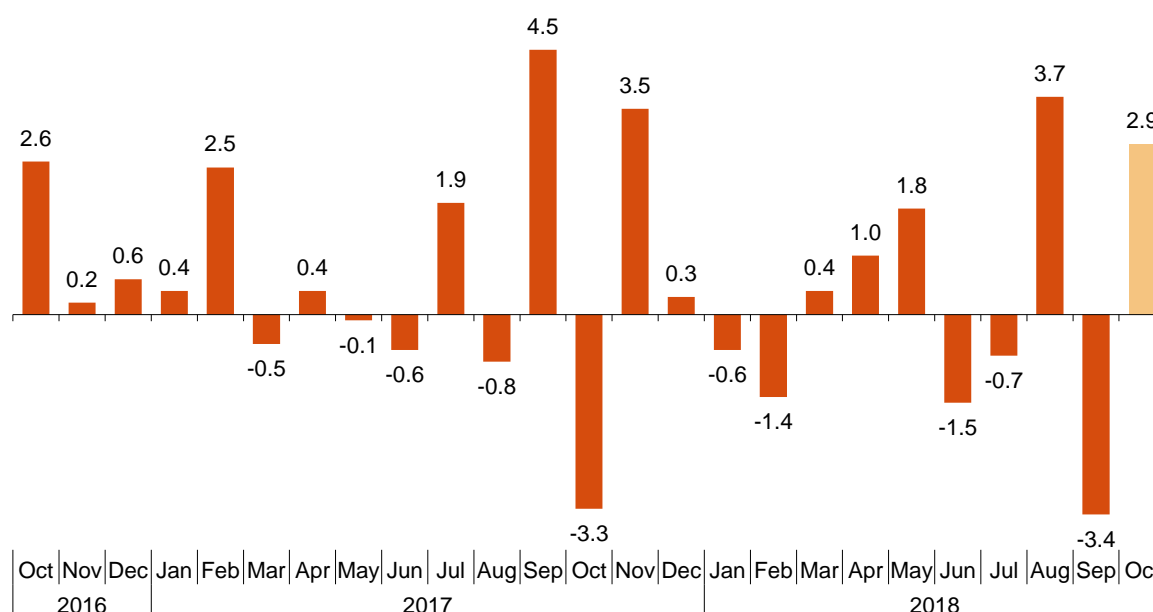
The monthly variation of the Total Industrial New Orders Received Index¹ stands at 2.9%, after seasonal and calendar adjustment

The annual rate stands at 5.8% in the seasonal and calendar adjusted series and at 8.7% in the original series

Monthly trend of Industrial New Orders Received

The monthly variation of the seasonally and calendar adjusted Industrial New Orders Received Index between October and September stood at 2.9%. This rate was 6.3 points higher than the previous month.

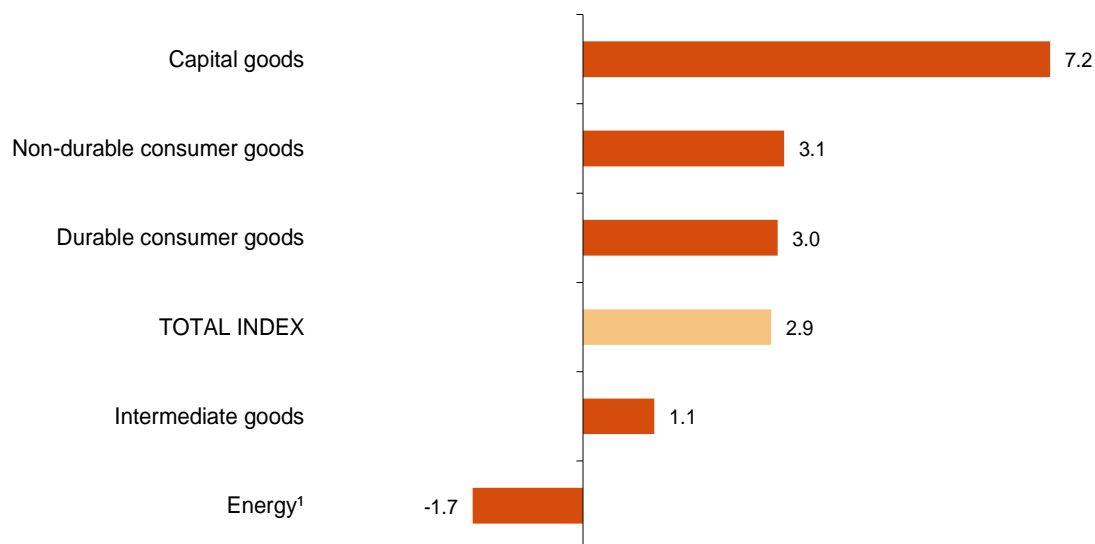
Industrial New Orders Received Index, Total. Seasonally and calendar adjusted. October 2018. Monthly rate. Percentage



¹ As reflected in the methodology of this value index, the information is presented in current terms (nominal terms), this is, without adjusting the price variation effects.

By Main Industrial Groupings (MIGs), four of the five sectors showed positive monthly rates. It is worth highlighting the increase in *Capital goods* (7.2%). The only sector that decreased was *Energy*² (-1.7%).

Industrial New Orders Received Indices, Total and by MIGs. Seasonally and calendar adjusted. October 2018. Monthly rate. Percentage



¹ Except electricity, gas, steam, air conditioning and water supply.

A more detailed analysis showed the branches of activity with the highest and the lowest monthly rates in the month of October.

Branches of activity with the highest monthly rates of the Industrial New Orders Received Index, Seasonally and calendar adjusted

Branch of activity (Division of the CNAE 2009)	Monthly rate (%)
Manufacture of other transport material	48.3
Manufacture of computer, electronic and optical products	11.9
Repair and installation of machinery and equipment	11.5

Branches of activity with the lowest monthly rates of the Industrial New Orders Received Index, Seasonally and calendar adjusted

Branch of activity (Division of the CNAE 2009)	Monthly rate (%)
Other mining and quarrying	-7.1
Extraction of anthracite, coal and lignite	-6.2
Other manufacturing industries	-5.3

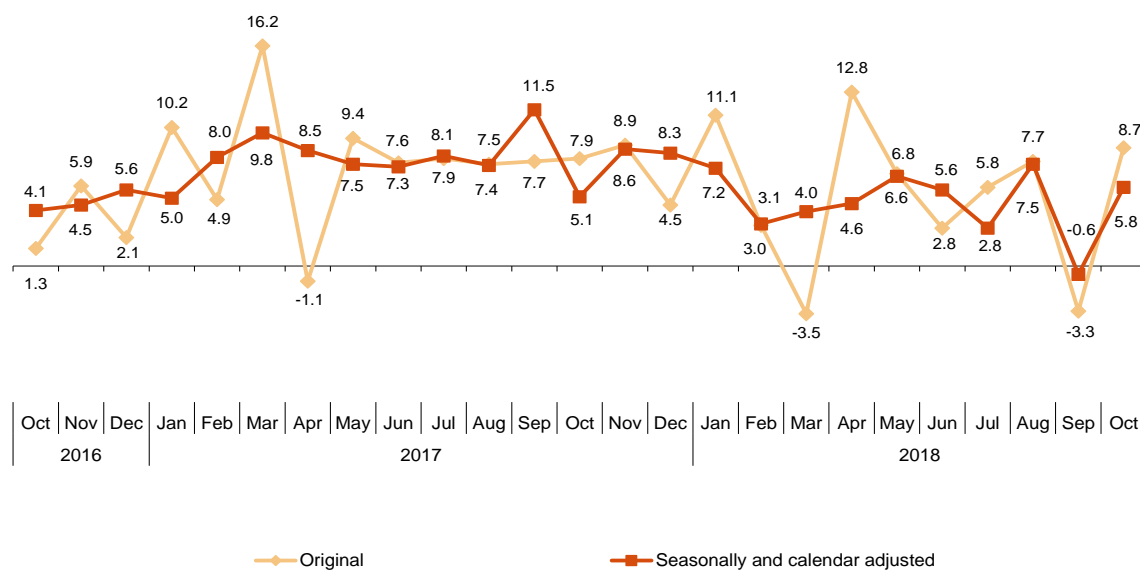
² Except electricity, gas, steam, air conditioning and water supply.

Annual trend of Industrial New Orders Received

The Total Industrial New Orders Received Index, once adjusted for seasonal and calendar effects, showed a variation of 5.8% in October, as compared with the same month of the previous year. This rate was 6.4 points higher than the one registered in September.

The INORI original series of the registered an annual variation of 8.7%. This rate was 12 points higher than the one in September.

Industrial New Orders Received Index, Total Seasonally and calendar adjusted. October 2018. Annual rates. Percentage



By MIGs, the seasonally and calendar adjusted indices registered positive annual rates in five of five of the analysed sectors, highlighting the increase in *Energy*² (35.6%).

Industrial New Orders Received Index, Total and by MIGs. Annual rates

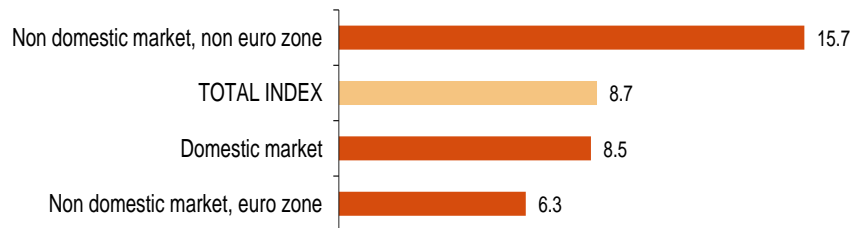
	Unadjusted index	Seasonally and calendar adjusted index
	Annual rate (%)	Annual rate (%)
TOTAL INDEX	8.7	5.8
1. Consumer goods	6.8	2.8
1.1. Durable consumer goods	9.8	6.1
1.2. Non-durable consumer goods	6.6	2.9
2. Capital goods	7.2	4.6
3. Intermediate goods	5.9	2.8
4. Energy ¹	36.5	35.6

¹ Except electricity, gas, steam, air conditioning and water supply.

Annual trend of the Industrial New Orders Received by market. Original series

In October all markets showed positive annual rates. It is worth noting the increase registered in the non euro area in the non domestic market (15.7%).

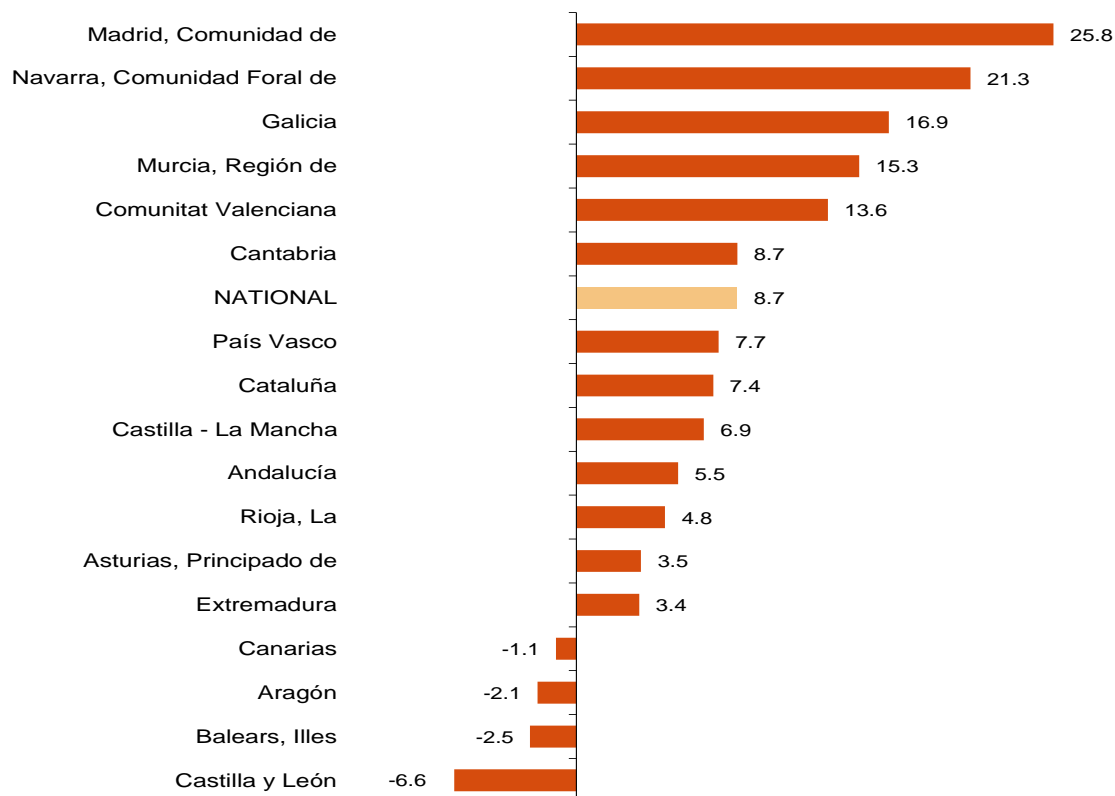
Industrial New Orders Received Index, Total and by market October 2018. Annual rate. Percentage



Results by Autonomous Community. Annual rate of the Industrial New Orders Received. Original series

New orders received increased as compared to October 2017 in 13 Autonomous Communities and decreased in the other four. The largest increases were recorded in Comunidad de Madrid (25.8%), Comunidad Foral de Navarra (21.3%) and Galicia (16.9%). The largest decreases were recorded in Castilla y León (-6.6%), Illes Balears (-2.5%) and Aragón (-2.1%).

Industrial New Orders Received Index, Total and by Autonomous Community October 2018. Annual rate. Percentage



Revisions and data update

On the press release day, INE has updated INORI data series corresponding to the last 13 months. In the case of calendar adjusted and seasonally and calendar adjusted series, according to INE standard, series are revised since its beginning. Results are available at INEBase.

Methodological note

Industrial New Orders Received Indices (INORI) are short-term indicators aiming at measuring the monthly evolution of the industrial sector, excluding the construction.

The required information is collected since January 2002, together with the Industrial Turnover Indices (ITI) through a survey addressed to more than 12.000 industrial establishments throughout the country.

Survey Type: ongoing monthly.

Base year: 2015.

Population scope: units of economic activity whose main activity is included in Sections B: Extractive industries (with the exception, due to their not being relevant to Spanish industry, of division 09) or C: Manufacturing industry of CNAE-2009.

Geographical scope: the whole country, excluding Ceuta and Melilla.

Sample size: Approx. 12,000 establishments.

Data collection: monthly, value of total business turnover broken down by market.

Collection method: fill in a questionnaire by the respondent using one of the following methods: internet (IRIA system), email, fax, telephone or post.

Further information is available in the methodology:

http://www.ine.es/dyngs/INEbase/en/operacion.htm?c=Estadistica_C&cid=1254736148149&menu=metodologia&idp=1254735576715

And in the standardised methodological report:

<http://www.ine.es/dynt3/metadatos/en/RespuestaDatos.html?oe=30053>

For further information see **INEbase:** www.ine.es/en/ Twitter: [@es_ine](https://twitter.com/es_ine)

All press releases at: www.ine.es/en/prensa/prensa_en.htm

Press office: Telephone numbers: (+34) 91 583 93 63 /94 08 – gprensa@ine.es

Information Area: Telephone number: (+34) 91 583 91 00 – www.ine.es/infoine/?L=1

Industrial New Orders Received Index. Base 2015

October 2018

Provisional data

1. New Orders Received indices¹ Seasonally and calendar adjusted

	Index	Rate (%)		Year-to-date average
		Monthly	Annual	
TOTAL INDEX	115.4	2.9	5.8	4.6
1. Consumer goods	111.3	2.6	2.8	0.5
1.1. Durable consumer goods	113.3	3.0	6.1	1.4
1.2. Non-durable consumer goods	111.5	3.1	2.9	0.4
2. Capital goods	112.1	7.2	4.6	1.9
3. Intermediate goods	114.9	1.1	2.8	5.8
4. Energy ²	141.7	-1.7	35.6	26.3

¹Regulation (EC) no. 656/2007 of the Commission of 14 June 2007.

² Except electricity, gas, steam, air conditioning and water supply.

2. New Orders Received indices¹ Calendar adjusted

	Index	Rate (%)	
		Annual	Year-to-date average
TOTAL INDEX	118.4	5.8	4.5
1. Consumer goods	118.2	3.4	0.4
1.1. Durable consumer goods	123.4	6.2	1.2
1.2. Non-durable consumer goods	117.8	3.2	0.3
2. Capital goods	111.9	4.6	1.5
3. Intermediate goods	117.5	2.6	5.7
4. Energy ²	145.6	35.6	26.9

¹Regulation (EC) no. 656/2007 of the Commission of 14 June 2007.

² Except electricity, gas, steam, air conditioning and water supply.

3. New Orders Received indices, Total and by activities Unadjusted

	Index	Rate (%)		Effect
		Annual	Year-to-date average	Annual
TOTAL INDEX	120.2	8.7	5.0	
1. CONSUMER GOODS	120.2	6.8	0.9	2.127
1.1. Durable consumer goods	125.7	9.8	1.7	0.188
- Manufacture of consumer electronics, optical instruments and photographic equipment	131.2	15.7	6.6	0.007
- Manufacture of household appliances	111.2	1.7	-3.9	0.010
- Manufacture of motorcycles, bicycles, vehicles for the disabled and others	142.0	-2.0	3.8	-0.002
- Manufacture of furniture	133.8	14.7	4.0	0.160
- Manufacture of jewellery, costume jewellery and musical instruments	115.4	9.8	1.0	0.013
1.2. Non-durable consumer goods	119.9	6.6	0.8	1.939
- Food industries (except grain mill products and food for animals)	119.9	4.4	-0.6	0.770
- Manufacture of beverages	116.2	7.6	4.1	0.257
- Manufacture of tobacco	67.0	7.2	0.7	0.005
- Manufacture of knitted fabrics, carpets, rope, non-woven fabrics, textile products for technical use and industrial and other textile products	117.7	6.5	2.8	0.043
- Manufacture of garments	107.5	9.6	-1.9	0.086
- Leather and footwear industry	145.4	8.8	3.3	0.105
- Graphic arts and reproduction of recorded media	104.6	9.9	0.2	0.104
- Manufacture of cleaning articles, perfumes and cosmetics	146.5	12.4	6.6	0.218
- Manufacture of pharmaceutical products	115.9	13.4	1.9	0.359
- Manufacture of sporting goods; games and toys and Other manufacturing industries	114.9	-1.9	-2.6	-0.008
2. CAPITAL GOODS	113.3	7.2	2.0	1.764
- Manufacture of metal products for construction, containers made of metal, steam generators, weapons and ammunition	107.6	11.2	-1.1	0.216
- Manufacture of computers, peripherals and telecommunications equipment; appliances for measuring and navigation; radiation and medical and therapeutic equipment	128.4	6.4	6.0	0.039
- Manufacture of machinery and equipment n.e.c.	116.1	7.5	3.6	0.288
- Manufacture of motor vehicles, trailers and semi-trailers	108.2	-0.2	2.0	-0.032
- Naval, railway, aircraft and spacecraft construction. Combat vehicles	129.7	47.5	0.9	0.981
- Manufacture of medical and dental instruments and supplies	118.6	7.5	4.5	0.027
- Repair and installation of machinery and equipment	124.1	12.7	1.4	0.246
3. INTERMEDIATE GOODS	119.6	5.9	6.2	2.139
- Mining of metal ores
- Other mining and quarrying	112.1	9.6	4.0	.
- Manufacture of grain mill products, starches, and food for animals	119.3	7.4	5.4	0.218
- Preparation and spinning of textile fibres. Manufacture of woven textiles. Textile finishings	111.9	-1.2	-0.9	-0.006
- Wood and cork industry	129.1	2.9	5.0	0.042
- Paper industry	117.8	8.9	5.0	0.235
- Chemical industry except cleaning articles, perfumes and cosmetics	113.0	8.9	5.5	0.563
- Rubber and plastic material transformation industry	119.4	2.2	2.9	0.095
- Manufacture of other non-metallic ore products	122.1	6.3	6.1	0.228
- Metallurgy; manufacture of iron, steel and ferro-alloy products	122.6	2.1	9.5	0.140
- Forging, stamping, embossing and rolling of metals. - Manufacture of tools, hardware goods, containers and other metal products	126.5	5.9	6.5	0.273
- Manufacture of electronic components, assembled printed circuits, and magnetic and optical media	115.1	17.9	0.4	0.036
- Manufacture of electrical material and equipment except household appliances	114.5	13.1	10.6	0.323
4. ENERGY¹	146.1	36.5	27.0	2.711
- Extraction of anthracite, coal and lignite	63.3	-31.2	-20.2	.
- Extraction of crude oil, petroleum and natural gas
- Manufacture of coke and refined petroleum products	146.7	36.8	27.2	2.723

¹ Except electricity, gas, steam, air conditioning and water supply.

(.) Data not available due to statistical confidentiality.

4. New Orders Received indices, Total and by branch of activity Unadjusted

	Index	Rate (%)		Effect Annual
		Annual	Year-to-date average	
TOTAL INDEX	120.2	8.7	5.0	
B. Mining and quarrying industries	112.3	-2.7	1.3	-0.020
Extraction of anthracite, coal and lignite	63.3	-31.2	-20.2	.
Extraction of crude oil, petroleum and natural gas
Mining of metal ores
Other mining and quarrying	112.1	9.6	4.0	.
C. Manufacturing industry	120.2	8.8	5.0	8.762
Food industry	119.8	4.8	0.3	0.988
Manufacture of beverages	116.2	7.6	4.1	0.257
Manufacture of tobacco	67.0	7.2	0.7	0.005
Textile industry	115.2	3.2	1.3	0.037
Manufacture of garments	107.5	9.6	-1.9	0.086
Leather and footwear industry	145.4	8.8	3.3	0.105
Manufacture of wood and of products of wood and cork, except furniture; basketmaking and wickerwork	129.1	2.9	5.0	0.042
Paper industry	117.8	8.9	5.0	0.235
Graphic arts and reproduction of recorded media	104.6	9.9	0.2	0.104
Manufacture of coke and refined petroleum products	146.7	36.8	27.2	2.723
Chemical industry	119.1	9.7	5.7	0.781
Manufacture of pharmaceutical products	115.9	13.4	1.9	0.359
Rubber and plastic material transformation industry	119.4	2.2	2.9	0.095
Manufacture of other non-metallic ore products	122.1	6.3	6.1	0.228
Metallurgy; manufacture of iron, steel and ferro-alloy products	122.6	2.1	9.5	0.140
Manufacture of metal products, except machinery and equipment	120.1	7.4	4.1	0.489
Manufacture of computer, electronic and optical products	124.9	9.6	4.6	0.082
Manufacture of electrical material and equipment	114.0	11.0	8.2	0.332
Manufacture of machinery and equipment n.e.c.	116.1	7.5	3.6	0.288
Manufacture of motor vehicles, trailers and semi-trailers	108.2	-0.2	2.0	-0.032
Manufacture of other transport material	130.0	45.5	1.0	0.980
Manufacture of furniture	133.8	14.7	4.0	0.160
Other manufacturing industries	116.5	3.6	0.8	0.032
Repair and installation of machinery and equipment	124.1	12.7	1.4	0.246

(.) Data not available due to statistical confidentiality.

5. New Orders Received indices, Total and by branch of activity Unadjusted

	Index	Rate (%)	
		Annual	Year-to-date average
GENERAL INDEX	120.2	8.7	5.0
1. Domestic market	122.7	8.5	6.1
2. Non domestic market	116.9	9.3	2.8
2.1. Non domestic market, euro area	118.0	6.3	1.2
2.2. Non domestic market, non euro area	117.9	15.7	4.1

**6. New Orders Received indices, National and by Autonomous Community
Unadjusted**

	Index	Rate (%)	
		Annual	Year-to-date average
NATIONAL	120.2	8.7	5.0
Andalucía	117.7	5.5	4.2
Aragón	117.4	-2.1	6.1
Asturias, Principado de	117.9	3.5	10.6
Balears, Illes	106.0	-2.5	-3.6
Canarias	111.6	-1.1	-0.4
Cantabria	117.6	8.7	6.5
Castilla y León	110.5	-6.6	0.3
Castilla - La Mancha	125.9	6.9	6.9
Cataluña	122.6	7.4	4.9
Comunitat Valenciana	119.5	13.6	6.0
Extremadura	129.2	3.4	7.5
Galicia	130.9	16.9	4.1
Madrid, Comunidad de	118.1	25.8	-1.8
Murcia, Región de	127.9	15.3	18.2
Navarra, Comunidad Foral de	118.5	21.3	10.7
País Vasco	116.7	7.7	5.1
Rioja, La	117.3	4.8	1.3