

16 June 2012

**Industrial Turnover Indices (ITI). Base 2005**  
**Industrial New Orders Received Indices (INORI). Base 2005**  
April 2012. *Provisional data*

**Main results**

- The annual rate of the **Industrial Turnover Index** stands at **-4.5%** in April, almost two points higher than that registered in March.
- By economic destination of the goods, all industrial sectors present negative interannual rates, except Energy.
- The average rate of the Industrial Turnover Index stands at -2.2% in the first four months of the year.
- The annual variation rate of **New Orders Received** in the month of March is **-4.7%**, almost one point lower than that registered in March.
- The average rate of the General Industrial New Orders Received Index stands at -2.2% in the first four months of 2012.

**Evolution of Industrial Turnover**

The Industrial Turnover Index (ITI) experienced an interannual variation of -4.5% in April, two points higher than that registered in March.

By economic destination of the goods, the industrial sectors that presented negative effect on the general index were:

- **Intermediate goods**, with an annual rate of -6.5% and an effect of -2.419, due to the decreases registered in all activities comprising this sector. Among them, worth noting, by its influence, the decreases observed in *Manufacture of other non-metallic ore products* and *Metallurgy; manufacture of iron, steel and ferro-alloy products*.
- **Capital goods**, with an annual variation of -10.3% and an effect of -2.245, caused by the negative evolution in almost all the activities comprising this sector. Among them, highlighting the *Manufacture of motor vehicles, trailers and semi-trailers* and *Manufacture of metal products for construction, containers made of metal, steam generators, weapons and ammunition*.

In turn, **Energy** was the only industrial sectors that presented a positive effect on the general index, with an annual variation of 10.6% and an effect of 1.155, mainly due to the increase observed in the *Manufacture of coke and refined petroleum products*.

A more detailed analysis showed the activities that most affected the annual rate of the ITI in the month of April.

#### Activities with the greatest negative effect on the annual rate of the ITI

Activity (Basic aggregate of the ITI)	Annual rate (%)	Effect
Manufacture of motor vehicles, trailers and semi-trailers	-10.4	-1.226
Manufacture of other non-metallic ore products	-15.2	-0.626
Metallurgy; manufacture of iron, steel and ferro-alloy products	-8.5	-0.550
Manufacture of metal products for construction, containers made of metal, steam generators, weapons and ammunition	-23.0	-0.546

#### Activities with the greatest positive effect on the annual rate of the ITI

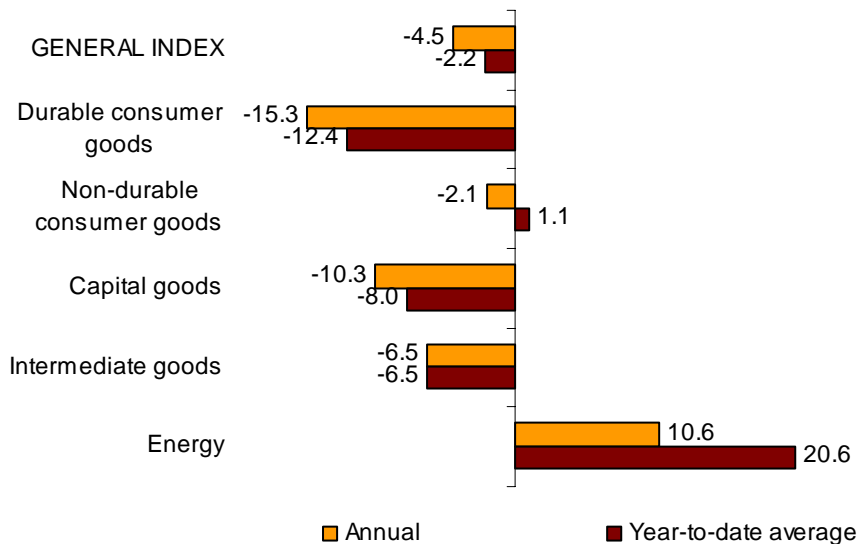
Activity (Basic aggregate of the ITI)	Annual rate (%)	Effect
Manufacture of coke and refined petroleum products	10.9	1.174
Manufacture of garments	14.1	0.163
Manufacture of grain mill products, starches, and food for animals	2.2	0.066
Manufacture of tobacco	20.6	0.033

#### Year-to-date average rates

The average rate of the Industrial Turnover Index registered a variation of **-2.2%** in the first four months of the year, as compared with the same period of 2011.

By economic destination of the goods, this turnover rate was negative in Durable consumer goods (-12.4%), Capital goods (-8.0%) and Intermediate goods (-6.5%). Conversely, it was positive in Non-durable consumer goods (1.1%) and Energy (20.6%).

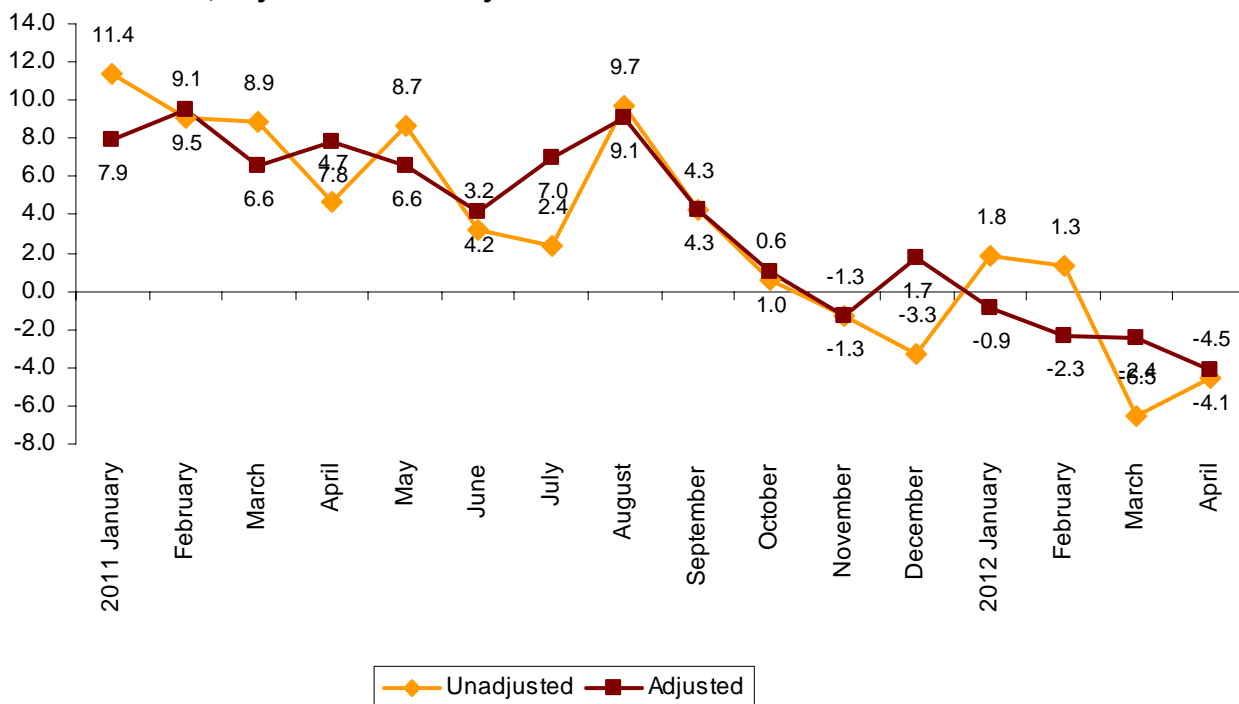
### Annual and year-to-date average rates of ITI General index and by economic destination of the goods



### Evolution of the ITI, adjusted for the calendar effect

After adjusting for the calendar effect, that is, the difference between the number of working days in a given month in different years, the interannual variation of the ITI in the month of April was **-4.1%**, more than one-and-a-half points lower than that registered in March.

### Annual evolution of the ITI General Index, adjusted and unadjusted



## Evolution of Industrial New Orders Received

The Industrial New Orders Received Index (INORI) experienced an interannual variation of -4.7% in April, almost one point lower than that registered in March.

By economic destination of the goods, the industrial sectors that presented the greatest negative effects on the general index were:

- **Intermediate goods**, with a rate of -7.1% and an effect of -2.663, motivated by the decreases registered in most of the activities comprising this sector. Among them, worth noting, the observed in *Manufacture of electrical material and equipment except household appliances* and *Manufacture of other non-metallic ore products*.
- **Capital goods**, with an annual variation of -9.6% and an effect of -1.984, mainly due to the negative evolution in new orders received in *Manufacture of motor vehicles, trailers and semi-trailers* and *Manufacture of machinery and equipment n.e.c.*

In turn, **Energy** was the only industrial sector that presented a positive effect on the general index, with an annual variation of 10.5% and an effect of 1.153, mainly due to the increase registered in the *Manufacture of coke and refined petroleum products*.

A more detailed analysis showed the activities that most affected the annual rate of the INORI in the month of April.

### Activities with the greatest negative effect on the annual rate of the INORI

Activity (Basic aggregate of the INORI)	Annual rate (%)	Effect
Manufacture of motor vehicles, trailers and semi-trailers	-16.4	-2.087
Manufacture of electrical material and equipment except household appliances	-16.5	-0.548
Manufacture of other non-metallic ore products	-12.4	-0.500
Rubber and plastic material transformation industry	-10.1	-0.452

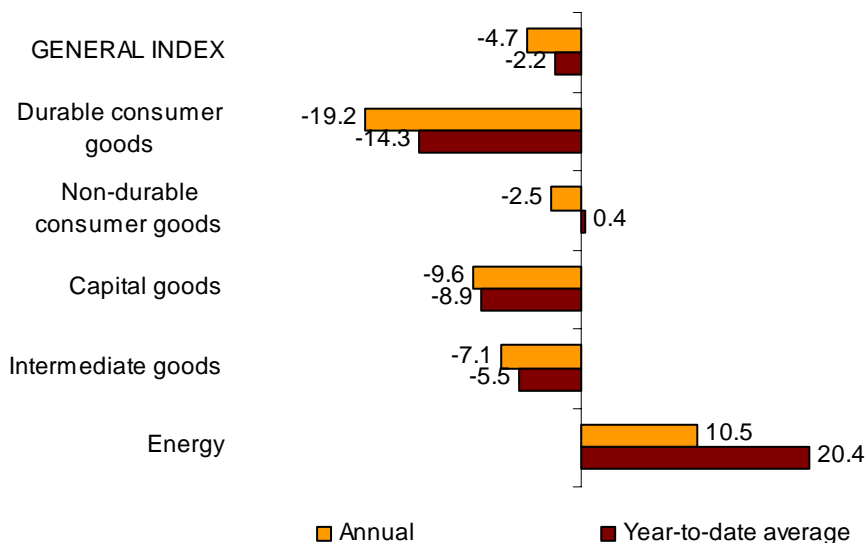
### Activities with the greatest positive effect on the annual rate of the INORI

Activity (Basic aggregate of the INORI)	Annual rate (%)	Effect
Manufacture of coke and refined petroleum products	10.9	1.175
Manufacture of machinery and equipment n.e.c.	9.2	0.307
Naval, railway, aircraft and spacecraft construction. Combat vehicles	43.0	0.268
Manufacture of grain mill products, starches, and food for animals	2.6	0.076

## Year-to-date average rates

The average of the General Industrial New Orders Received Index in the first four months of the year registered a variation rate of **-2.2%**, as compared with the same period of the previous year. By economic destination of the goods, this variation rate was negative, in all of the industrial sectors, except Energy and Non-durable consumer goods.

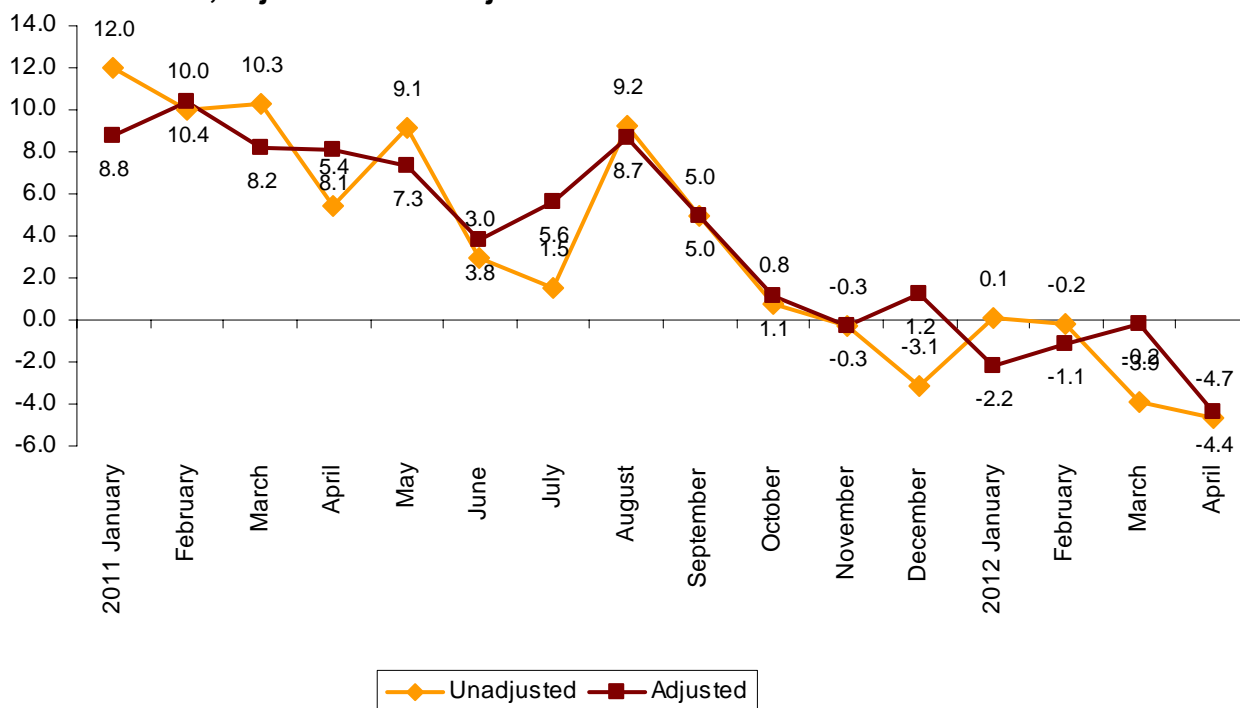
**Annual and year-to-date average rates of INORI**  
**General index and by economic destination of the goods**



**Evolution of the INORI, adjusted for the calendar effect**

After eliminating the calendar effect, that is, the difference between the number of working days in a given month in different years, the interannual variation of the INORI in the month of April was **-4.4%**, more than four points lower than that registered in March.

**Annual evolution of the INORI**  
**General Index, adjusted and unadjusted**



# Industrial Turnover Indices. Base 2005

## Industrial New Orders Received Indices. Base 2005

### April 2012

Provisional data

#### 1. Industrial turnover indices by economic destination<sup>1</sup>

	Index	% variation		Effect Annual
		Annual	Year-to-date average	
<b>GENERAL INDEX</b>	<b>89.7</b>	<b>-4.4</b>	<b>-2.2</b>	
<b>1. CONSUMER GOODS</b>	<b>90.4</b>	<b>-3.2</b>	<b>0.0</b>	<b>-0.944</b>
1.1. DURABLE CONSUMER GOODS	43.0	-15.3	-12.4	-0.352
- Manufacture of consumer electronics, optical instruments and photographic equipment	6.5	-49.7	-45.3	-0.043
- Manufacture of household appliances	51.7	-4.9	-5.0	-0.028
- Manufacture of motorcycles, bicycles, vehicles for the disabled and others	23.0	-51.2	-35.6	-0.087
- Manufacture of furniture	49.2	-14.1	-11.9	-0.180
- Manufacture of jewellery, costume jewellery and musical instruments	84.3	-7.9	-3.1	-0.014
1.2. NON-DURABLE CONSUMER GOODS	98.2	-2.1	1.1	-0.592
- Food industries (except grain mill products and food for animals)	106.4	-0.8	4.5	-0.119
- Manufacture of beverages	92.4	-2.3	0.9	-0.078
- Manufacture of tobacco	70.5	20.6	-0.9	0.033
- Manufacture of knitted fabrics, carpets, rope, non-woven fabrics, textile products for technical use and industrial and other textile products	65.3	-9.8	-7.3	-0.061
- Manufacture of garments	73.8	14.1	-0.7	0.163
- Leather and footwear industry	66.3	-11.3	-0.6	-0.084
- Graphic arts and reproduction of recorded media	64.0	-14.1	-13.7	-0.203
- Manufacture of cleaning articles, perfumes and cosmetics	88.9	-1.9	1.6	-0.024
- Manufacture of pharmaceutical products	136.8	-4.7	-2.7	-0.181
- Manufacture of sporting goods; games and toys and Other manufacturing industries	89.6	-9.4	-3.7	-0.038
<b>2. CAPITAL GOODS</b>	<b>77.1</b>	<b>-10.3</b>	<b>-8.0</b>	<b>-2.231</b>
- Manufacture of metal products for construction, containers made of metal, steam generators, weapons and ammunition	46.4	-23.0	-17.1	-0.546
- Manufacture of computers, peripherals and telecommunications equipment; appliances for measuring and navigation; radiation and medical and therapeutic equipment	56.3	-7.2	-10.6	-0.042
- Manufacture of machinery and equipment n.e.c.	75.1	-7.1	-9.3	-0.229
- Manufacture of motor vehicles, trailers and semi-trailers	79.2	-10.4	-10.1	-1.226
- Naval, railway, aircraft and spacecraft construction. Combat vehicles	129.7	-12.8	4.6	-0.313
- Manufacture of medical and dental instruments and supplies	94.7	1.1	-0.9	0.001
- Repair and installation of machinery and equipment	101.5	10.4	10.9	0.125
<b>3. INTERMEDIATE GOODS</b>	<b>85.1</b>	<b>-6.5</b>	<b>-6.5</b>	<b>-2.419</b>
- Other mining and quarrying	69.0	-8.6	-11.4	-0.057
- Manufacture of grain mill products, starches, and food for animals	133.7	2.2	0.1	0.066
- Preparation and spinning of textile fibres. Manufacture of woven textiles. Textile finishings	53.7	-8.7	-12.9	-0.045
- Wood and cork industry	51.0	-10.2	-7.1	-0.130
- Paper industry	100.2	-4.5	-4.1	-0.121
- Chemical industry except cleaning articles, perfumes and cosmetics	105.0	-0.2	-0.5	-0.011
- Rubber and plastic material transformation industry	90.3	-7.7	-7.1	-0.345
- Manufacture of other non-metallic ore products	48.1	-15.2	-15.6	-0.626
- Metallurgy; manufacture of iron, steel and ferro-alloy products	99.4	-8.5	-11.1	-0.550
- Forging, stamping, embossing and rolling of metals. - Manufacture of tools, hardware goods, containers and other metal products	86.7	-6.4	-3.4	-0.301
- Manufacture of electronic components, assembled printed circuits, and magnetic and optical media	53.7	-29.0	-22.1	-0.074
- Manufacture of electrical material and equipment except household appliances	91.2	-7.3	-5.3	-0.226
<b>4. ENERGY (Except supply of electrical energy, gas, steam, air conditioning)</b>	<b>150.0</b>	<b>10.6</b>	<b>20.6</b>	<b>1.155</b>
- Extraction of anthracite, coal and lignite	76.9	-10.1	44.8	..
- Extraction of crude oil, petroleum and natural gas	..	..	..	..
- Manufacture of coke and refined petroleum products	152.0	10.9	20.4	1.174

<sup>1</sup> Regulation (EC) no. 656/2007 of the European Commission.

(..) Data not available due to statistical secrecy.

## 2. Industrial turnover indices adjusted by calendar effects

	Original index	% variation		Adjusted index	% variation	
		Annual	Year-to-date average		Annual	Year-to-date average
<b>General index</b>	<b>89.7</b>	<b>-4.4</b>	<b>-2.2</b>	<b>97.9</b>	<b>-4.1</b>	<b>-2.5</b>
1. Consumer goods	90.4	-3.2	0.0	96.8	-2.8	-0.5
1.1. Durable consumer goods	43.0	-15.3	-12.4	48.4	-15.0	-12.7
1.2. Non-durable consumer goods	98.2	-2.1	1.1	104.1	-1.8	0.6
2. Capital goods	77.1	-10.3	-8.0	85.1	-9.9	-8.8
3. Intermediate goods	85.1	-6.5	-6.5	94.6	-6.1	-6.1
4. Energy*	150.0	10.6	20.6	154.7	10.7	20.6

\*Except supply of electrical energy, gas, steam and air conditioning.

### 3. Interannual rates

#### Industrial turnover indices by economic destination

Period	General index		Consumer goods		Durable consumer goods		Non-durable consumer goods	
	Original	Adjusted <sup>1</sup>	Original	Adjusted <sup>1</sup>	Original	Adjusted <sup>1</sup>	Original	Adjusted <sup>1</sup>
2011 April *	4.7	7.8	0.1	3.0	-17.4	-14.3	1.8	4.7
May *	8.7	6.6	4.6	2.6	-10.8	-12.9	6.2	4.3
June *	3.2	4.2	-2.5	-1.5	-18.6	-17.7	-0.7	0.2
July *	2.4	7.0	-1.6	2.9	-13.2	-8.1	-0.4	3.9
August	9.7	9.1	6.5	5.9	1.3	0.6	6.9	6.3
September	4.3	4.3	0.6	0.6	-14.4	-14.4	2.2	2.2
October *	0.6	1.0	-0.6	-0.3	-17.3	-17.0	1.0	1.3
November *	-1.3	-1.3	-2.0	-2.0	-20.9	-20.9	0.0	0.0
December *	-3.3	1.7	-1.5	3.6	-16.9	-11.4	0.0	4.8
2012 January *	1.8	-0.9	3.4	0.7	-6.5	-9.7	4.2	1.6
February *	1.3	-2.3	3.5	-1.4	-11.5	-15.7	4.9	0.2
March *	-6.5	-2.4	-2.8	1.5	-14.9	-10.1	-1.7	2.5
April	-4.4	-4.1	-3.2	-2.8	-15.3	-15.0	-2.1	-1.8

Period	Capital goods		Intermediate goods		Energy	
	Original	Adjusted <sup>1</sup>	Original	Adjusted <sup>1</sup>	Original	Adjusted <sup>1</sup>
2011 April *	-0.9	2.1	3.9	7.2	41.8	42.9
May *	4.3	2.3	10.5	8.2	27.9	27.2
June *	1.3	2.3	4.8	5.9	23.3	23.6
July *	0.1	4.8	0.6	5.5	32.6	34.2
August	6.6	6.0	6.3	5.7	36.8	36.6
September	4.0	4.0	1.9	1.9	31.4	31.4
October *	-1.0	-0.7	-2.9	-2.6	26.3	26.4
November *	-4.4	-4.4	-5.1	-5.1	28.2	28.2
December *	-11.4	-6.7	-4.6	0.7	16.6	18.1
2012 January *	-3.3	-5.9	-2.0	-4.8	22.4	21.6
February *	-2.1	-7.8	-5.3	-6.3	28.4	28.1
March *	-14.6	-10.7	-11.4	-7.2	22.0	23.4
April	-10.3	-9.9	-6.5	-6.1	10.6	10.7

<sup>1</sup> Index rates adjusted for calendar effects.

\* Data revised.



#### 4. Industrial Turnover Indices by branch of activity (CNAE 2009)

	Index	% variation		Effect Annual
		Annual	Year-to-date average	
<b>GENERAL INDEX</b>	<b>89.7</b>	<b>-4.4</b>	<b>-2.2</b>	
<b>B. Mining and quarrying industries</b>	<b>70.5</b>	<b>-9.0</b>	<b>-4.1</b>	<b>-0.076</b>
Extraction of anthracite, coal and lignite	76.9	-10.1	44.8	..
Extraction of crude oil, petroleum and natural gas	..	..	..	..
Other mining and quarrying	69.0	-8.6	-11.4	-0.057
<b>C. Manufacturing industry</b>	<b>89.9</b>	<b>-4.4</b>	<b>-2.2</b>	<b>-4.364</b>
Food industry	110.3	-0.3	3.8	-0.054
Manufacture of beverages	92.4	-2.3	0.9	-0.078
Manufacture of tobacco	70.5	20.6	-0.9	0.033
Textile industry	59.4	-9.3	-9.9	-0.106
Manufacture of garments	73.8	14.1	-0.7	0.163
Leather and footwear industry	66.3	-11.3	-0.6	-0.084
Manufacture of wood and of products of wood and cork, except furniture; basketmaking and wickerwork	51.0	-10.2	-7.1	-0.130
Paper industry	100.2	-4.5	-4.1	-0.121
Graphic arts and reproduction of recorded media	64.0	-14.1	-13.7	-0.203
Manufacture of coke and refined petroleum products	152.0	10.9	20.4	1.174
Chemical industry	101.9	-0.5	-0.2	-0.035
Manufacture of pharmaceutical products	136.8	-4.7	-2.7	-0.181
Rubber and plastic material transformation industry	90.3	-7.7	-7.1	-0.345
Manufacture of other non-metallic ore products	48.1	-15.2	-15.6	-0.626
Metallurgy; manufacture of iron, steel and ferro-alloy products	99.4	-8.5	-11.1	-0.550
Manufacture of metal products, except machinery and equipment	69.1	-12.0	-7.8	-0.847
Manufacture of computer, electronic and optical products	39.1	-17.2	-16.8	-0.159
Manufacture of electrical material and equipment	81.2	-6.9	-5.3	-0.254
Manufacture of machinery and equipment n.e.c.	75.1	-7.1	-9.3	-0.229
Manufacture of motor vehicles, trailers and semi-trailers	79.2	-10.4	-10.1	-1.226
Manufacture of other transport material	110.5	-15.3	1.8	-0.400
Manufacture of furniture	49.2	-14.1	-11.9	-0.180
Other manufacturing industries	89.1	-7.1	-3.0	-0.051
Repair and installation of machinery and equipment	101.5	10.4	10.9	0.125

(..) Data not available due to statistical secrecy.

## 5. Industrial New Orders Received Indices by economic destination<sup>1</sup>

	Index	% variation		Effect Annual
		Annual	Year-to-date average	
<b>GENERAL INDEX</b>	<b>89.5</b>	<b>-4.5</b>	<b>-2.2</b>	
<b>1. CONSUMER GOODS</b>	<b>91.7</b>	<b>-3.8</b>	<b>-0.8</b>	<b>-1.172</b>
1.1. DURABLE CONSUMER GOODS	42.2	-19.2	-14.3	-0.455
- Manufacture of consumer electronics, optical instruments and photographic equipment	6.7	-49.9	-44.8	-0.044
- Manufacture of household appliances	53.1	-5.8	-5.5	-0.035
- Manufacture of motorcycles, bicycles, vehicles for the disabled and others	22.7	-63.5	-43.9	-0.142
- Manufacture of furniture	46.5	-17.4	-13.8	-0.220
- Manufacture of jewellery, costume jewellery and musical instruments	89.2	-7.4	-0.9	-0.014
1.2. NON-DURABLE CONSUMER GOODS	99.8	-2.5	0.4	-0.717
- Food industries (except grain mill products and food for animals)	107.6	-0.7	4.1	-0.110
- Manufacture of beverages	100.8	-1.8	2.2	-0.065
- Manufacture of tobacco	70.5	20.6	-0.9	0.034
- Manufacture of knitted fabrics, carpets, rope, non-woven fabrics, textile products for technical use and industrial and other textile products	66.7	-6.7	-6.4	-0.041
- Manufacture of garments	73.3	6.1	-2.1	0.075
- Leather and footwear industry	87.4	-11.5	-2.5	-0.114
- Graphic arts and reproduction of recorded media	57.7	-8.6	-15.0	-0.106
- Manufacture of cleaning articles, perfumes and cosmetics	90.8	-5.5	0.8	-0.074
- Manufacture of pharmaceutical products	133.0	-7.2	-4.5	-0.274
- Manufacture of sporting goods; games and toys and Other manufacturing industries	83.3	-10.7	-4.3	-0.041
<b>2. CAPITAL GOODS</b>	<b>74.4</b>	<b>-8.9</b>	<b>-8.8</b>	<b>-1.843</b>
- Manufacture of metal products for construction, containers made of metal, steam generators, weapons and ammunition	48.5	-19.1	-17.1	-0.450
- Manufacture of computers, peripherals and telecommunications equipment; appliances for measuring and navigation; radiation and medical and therapeutic equipment	47.0	-3.0	-1.7	-0.014
- Manufacture of machinery and equipment n.e.c.	81.5	-3.1	0.5	-0.103
- Manufacture of motor vehicles, trailers and semi-trailers	79.6	-16.4	-14.0	-2.087
- Naval, railway, aircraft and spacecraft construction. Combat vehicles	54.0	43.0	24.3	0.268
- Manufacture of medical and dental instruments and supplies	96.4	4.6	1.6	0.006
- Repair and installation of machinery and equipment	121.3	50.8	7.9	0.538
<b>3. INTERMEDIATE GOODS</b>	<b>85.2</b>	<b>-7.1</b>	<b>-5.5</b>	<b>-2.663</b>
- Other mining and quarrying	70.2	-8.8	-11.5	-0.060
- Manufacture of grain mill products, starches, and food for animals	132.6	2.6	0.3	0.076
- Preparation and spinning of textile fibres. Manufacture of woven textiles. Textile finishings	60.8	0.1	-7.5	0.001
- Wood and cork industry	49.2	-13.0	-7.3	-0.166
- Paper industry	99.2	-6.0	-3.1	-0.163
- Chemical industry except cleaning articles, perfumes and cosmetics	104.5	-0.4	-2.4	-0.022
- Rubber and plastic material transformation industry	88.3	-10.1	-8.0	-0.452
- Manufacture of other non-metallic ore products	48.5	-12.4	-13.9	-0.500
- Metallurgy; manufacture of iron, steel and ferro-alloy products	101.0	-6.4	-12.1	-0.414
- Forging, stamping, embossing and rolling of metals. - Manufacture of tools, hardware goods, containers and other metal products	88.9	-6.1	-4.6	-0.291
- Manufacture of electronic components, assembled printed circuits, and magnetic and optical media	57.4	-38.8	-17.9	-0.123
- Manufacture of electrical material and equipment except household appliances	87.7	-16.5	12.6	-0.548
<b>4. ENERGY (Except supply of electrical energy, gas, steam, air conditioning)</b>	<b>149.6</b>	<b>10.5</b>	<b>20.4</b>	<b>1.153</b>
- Extraction of anthracite, coal and lignite	61.5	-13.6	34.1	..
- Extraction of crude oil, petroleum and natural gas	..	..	..	..
- Manufacture of coke and refined petroleum products	152.0	10.9	20.4	1.175

<sup>1</sup> Regulation (EC) no. 656/2007 of the European Commission.

(..) Data not available due to statistical secrecy.

## 6. Industrial New Orders indices adjusted by calendar effects

	Original index	% variation		Adjusted index	% variation	
		Annual	Year-to-date average		Annual	Year-to-date average
<b>General index</b>	<b>89.5</b>	<b>-4.5</b>	<b>-2.2</b>	<b>95.0</b>	<b>-4.2</b>	<b>-1.9</b>
1. Consumer goods	91.7	-3.8	-0.8	97.4	-3.5	-1.5
1.1. Durable consumer goods	42.2	-19.2	-14.3	46.9	-19.0	-14.1
1.2. Non-durable consumer goods	99.8	-2.5	0.4	105.4	-2.2	-0.3
2. Capital goods	74.4	-8.9	-8.8	79.5	-8.5	-9.1
3. Intermediate goods	85.2	-7.1	-5.5	93.9	-6.7	-5.8
4. Energy*	149.6	10.5	20.4	150.1	10.7	20.6

\*Except supply of electrical energy, gas, steam and air conditioning.

## 7. Interannual rates

### Industrial New Orders indices by economic destination

Period	General index		Consumer goods		Durable consumer goods		Non-durable consumer goods	
	Original	Adjusted <sup>1</sup>	Original	Adjusted <sup>1</sup>	Original	Adjusted <sup>1</sup>	Original	Adjusted <sup>1</sup>
2011 April *	5.4	8.1	0.2	3.2	-18.3	-15.8	2.2	5.2
May *	9.1	7.3	4.9	3.0	-11.1	-12.8	6.6	4.6
June	3.0	3.8	-0.8	0.1	-15.7	-14.9	0.7	1.7
July	1.5	5.6	-0.4	4.0	-14.7	-10.7	0.9	5.5
August *	9.2	8.7	7.6	7.0	-2.7	-3.3	8.3	7.7
September *	5.0	5.0	0.6	0.6	-16.9	-16.9	2.3	2.3
October *	0.8	1.1	-0.6	-0.3	-19.9	-19.6	1.3	1.6
November *	-0.3	-0.3	-3.0	-3.0	-18.9	-18.9	-1.4	-1.4
December *	-3.2	1.2	-3.6	1.2	-22.8	-18.6	-1.9	3.1
2012 January *	0.1	-2.2	3.5	0.8	-12.1	-14.5	4.8	2.1
February *	-0.2	-1.1	-1.6	-6.9	-13.3	-14.2	-0.5	-6.0
March *	-3.9	-0.2	-0.8	3.5	-12.8	-8.8	0.2	4.7
April	-4.5	-4.2	-3.8	-3.5	-19.2	-19.0	-2.5	-2.2

Period	Capital goods		Intermediate goods		Energy	
	Original	Adjusted <sup>1</sup>	Original	Adjusted <sup>1</sup>	Original	Adjusted <sup>1</sup>
2011 April *	3.7	7.1	2.8	5.9	42.2	43.7
May *	6.7	4.5	9.8	7.7	27.7	26.9
June	2.2	3.2	2.2	3.2	23.1	23.5
July	-3.6	1.2	-0.8	3.8	32.6	34.7
August *	-0.1	-0.7	7.7	7.1	36.7	36.4
September *	5.6	5.6	2.8	2.8	31.0	31.0
October *	0.5	0.9	-3.4	-3.1	27.0	27.1
November *	0.7	0.7	-4.8	-4.8	27.6	27.6
December *	-9.8	-4.7	-3.9	1.2	15.9	17.9
2012 January *	-11.9	-14.5	-0.9	-3.5	22.0	20.8
February *	-4.0	-8.2	-4.4	-7.7	28.3	27.9
March *	-9.8	-5.5	-9.2	-5.1	21.9	23.8
April	-8.9	-8.5	-7.1	-6.7	10.5	10.7

<sup>1</sup> Index rates adjusted for calendar effects.

\* Data revised.

## 8. Industrial New Orders Received Indices by branch of activity (CNAE 2009)

	Index	% variation		Effect Annual
		Annual	Year-to-date average	
<b>GENERAL INDEX</b>	<b>89.5</b>	<b>-4.5</b>	<b>-2.2</b>	
<b>B. Mining and quarrying industries</b>	69.0	-9.7	-6.3	-0.081
Extraction of anthracite, coal and lignite	61.5	-13.6	34.1	..
Extraction of crude oil, petroleum and natural gas	..	..	..	..
Other mining and quarrying	70.2	-8.8	-11.5	-0.060
<b>C. Manufacturing industry</b>	89.7	-4.5	-2.2	-4.441
Food industry	111.1	-0.2	3.5	-0.034
Manufacture of beverages	100.8	-1.8	2.2	-0.065
Manufacture of tobacco	70.5	20.6	-0.9	0.034
Textile industry	63.7	-3.5	-6.9	-0.041
Manufacture of garments	73.3	6.1	-2.1	0.075
Leather and footwear industry	87.4	-11.5	-2.5	-0.114
Manufacture of wood and of products of wood and cork, except furniture; basketmaking and wickerwork	49.2	-13.0	-7.3	-0.166
Paper industry	99.2	-6.0	-3.1	-0.163
graphic arts and reproduction of recorded media	57.7	-8.6	-15.0	-0.106
Manufacture of coke and refined petroleum products	152.0	10.9	20.4	1.175
Chemical industry	101.9	-1.3	-1.9	-0.096
Manufacture of pharmaceutical products	133.0	-7.2	-4.5	-0.274
Rubber and plastic material transformation industry	88.3	-10.1	-8.0	-0.452
Manufacture of other non-metallic ore products	48.5	-12.4	-13.9	-0.500
Metallurgy; manufacture of iron, steel and ferro-alloy products	101.0	-6.4	-12.1	-0.414
Manufacture of metal products, except machinery and equipment	71.2	-10.4	-8.9	-0.741
Manufacture of computer, electronic and optical products	35.2	-20.8	-11.1	-0.181
Manufacture of electrical material and equipment	79.0	-14.9	9.4	-0.582
Manufacture of machinery and equipment n.e.c.	81.5	-3.1	0.5	-0.103
Manufacture of motor vehicles, trailers and semi-trailers	79.6	-16.4	-14.0	-2.087
Manufacture of other transport material	48.4	14.8	12.7	0.125
Manufacture of furniture	46.5	-17.4	-13.8	-0.220
Other manufacturing industries	87.3	-7.0	-2.2	-0.049
Repair and installation of machinery and equipment	121.3	50.8	7.9	0.538

(..) Data not available due to statistical secrecy.