

18 September 2012

Industrial Turnover Indices (ITI). Base 2005
Industrial New Orders Received Indices (INORI). Base 2005
July 2012. *Provisional data*

The annual rate of the Industrial Turnover Index stands at –2.0% in July as compared with –6.7% in June

The monthly rate of the ITI is 2.4%

The annual variation rate of New Orders Received in the month of July is –2.8%, as compared with –1.0% in June

Evolution of Industrial Turnover

The Industrial Turnover Index (ITI) experienced an interannual variation of –2.0% in July, almost five points above than that registered in June.

By economic destination of the goods, all the industrial sectors, except Energy, presented negative effect. The industrial sectors that presented the higher negative effect on the general index were:

- **Intermediate goods**, with an annual rate of –3.9% and an effect of –1.417, due to the decreases registered in the majority of the activities comprising this sector. Among them, worth highlighting, by their influence, were *Metallurgy; manufacture of iron, steel and ferro-alloy products* and *Manufacture of other non-metallic ore products*.
- **Capital goods**, with an annual variation of –6.3% and an effect of –1.402, caused by the negative evolution in almost all activities comprising this sector. Among them, highlighting the *Manufacture of motor vehicles, trailers and semi-trailers*.

In turn, **Energy** was the only industrial sectors that presented a positive effect on the general index, with an annual variation of 13.2% and an effect of 1.380, mainly due to the increase registered in the *Manufacture of coke and refined petroleum products*.

A more detailed analysis showed the activities that most affected the annual rate of the ITI in the month of July.

Activities with the greatest negative effect on the annual rate of the ITI

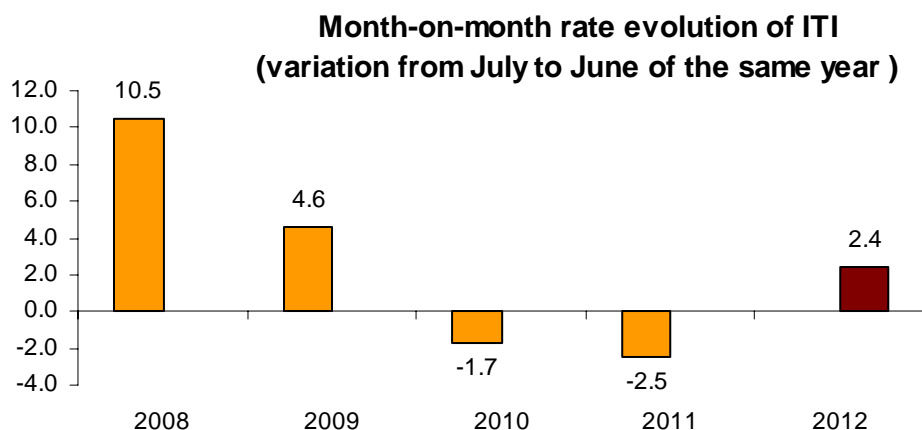
Activity (Basic aggregate of the ITI)	Annual rate (%)	Effect
Manufacture of motor vehicles, trailers and semi-trailers	-5.4	-0.624
Metallurgy; manufacture of iron, steel and ferro-alloy products	-8.6	-0.514
Manufacture of other non-metallic ore products	-12.3	-0.508
Manufacture of metal products for construction, containers made of metal, steam generators, weapons and ammunition	-15.5	-0.371

Activities with the greatest positive effect on the annual rate of the ITI

Activity (Basic aggregate of the ITI)	Annual rate (%)	Effect
Manufacture of coke and refined petroleum products	14.4	1.489
Manufacture of electrical material and equipment except household appliances	6.3	0.184
Manufacture of grain mill products, starches, and food for animals	6.2	0.172
Manufacture of beverages	3.8	0.145

Monthly rate evolution¹

The variation of the Industrial Turnover Index between July and June was 2.4%. This month-on-month rate was the first positive rate in the last three years (–2.5% in 2011 and –1.7% in 2010).



¹ In order to contribute to the analysis and interpretation of data, this section has been added with the monthly rate evolution of the ITI in July in the last years. The monthly rates of this type of series may have some degree of seasonal behaviour, therefore it is recommended that it be evaluated in relation to the item of data for the same month in previous years.

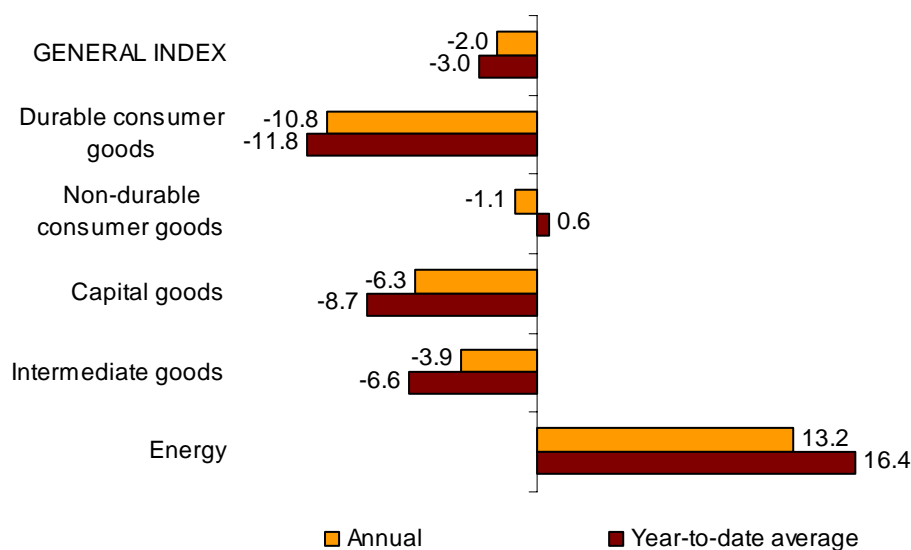
Year-to-date average rates

The average rate of the Industrial Turnover Index registered a variation of **-3.0%** in the period from January to July, as compared with the same period of 2011.

By economic destination of the goods, this turnover rate was negative in Durable consumer goods (-11.8%), Capital goods (-8.7%) and Intermediate goods (-6.6%). Conversely, it was positive in Non-durable consumer goods (0.6%) and Energy (16.4%).

Annual and year-to-date average rates of ITI

General index and by economic destination of the goods

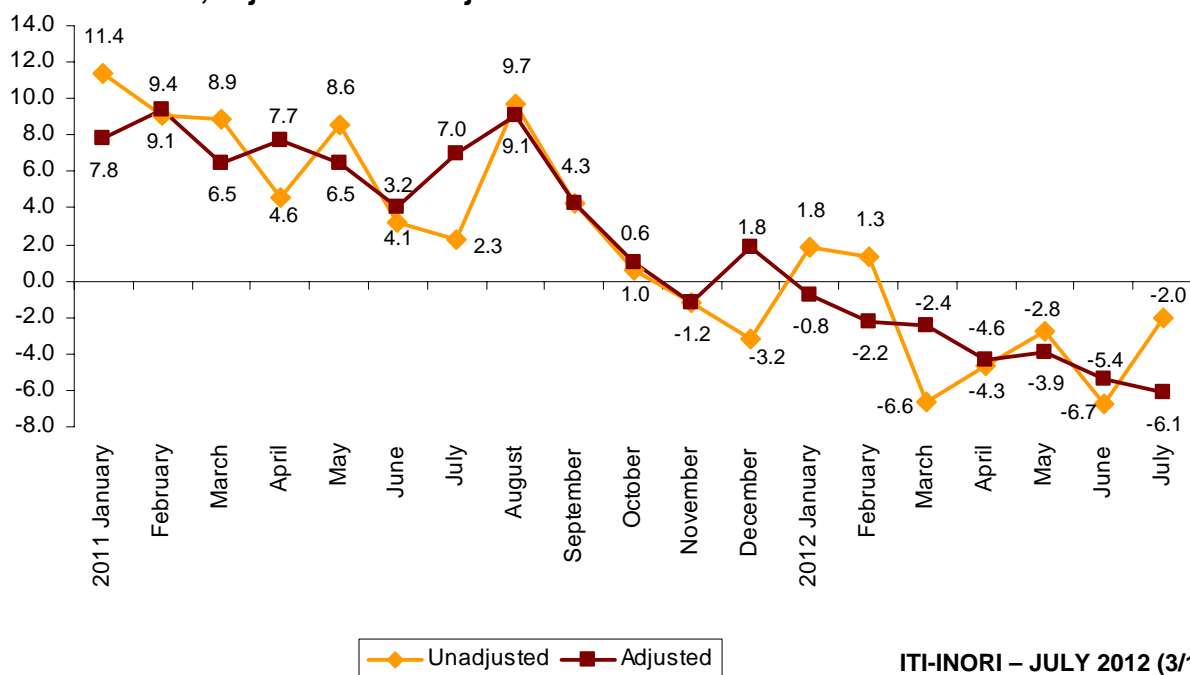


Evolution of the ITI, adjusted for the calendar effect

After adjusting for the calendar effect, that is, the difference between the number of working days in a given month in different years, the interannual variation of the ITI in the month of July was **-6.1%**, more than half point lower than that registered in June.

Annual evolution of the ITI

General Index, adjusted and unadjusted



Evolution of Industrial New Orders Received

The Industrial New Orders Received Index (INORI) experienced an interannual variation of -2.8% in July, more than half point below than that registered in June.

By economic destination of the goods, the industrial sectors that presented the greatest negative effects on the general index were:

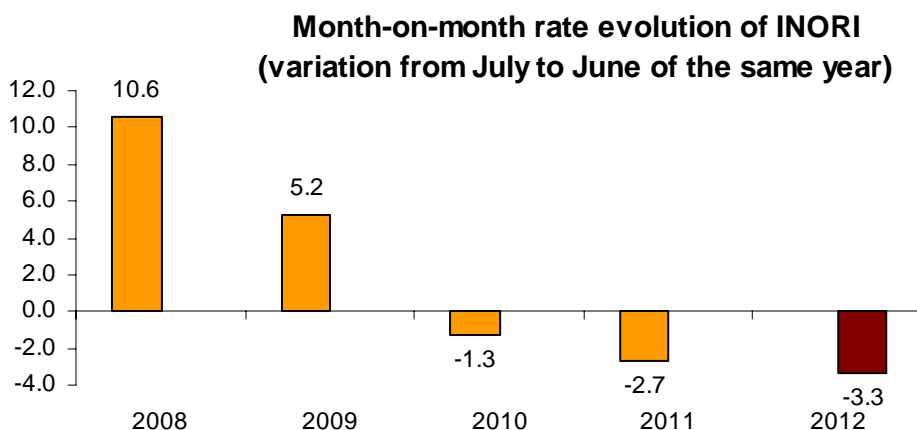
- **Capital goods**, with an annual variation of -12.9% and an effect of -2.651, caused by the negative evolution in almost all activities comprising this sector. Among them, highlighting the *Manufacture of motor vehicles, trailers and semi-trailers*.

- **Intermediate goods**, with an annual variation of -4.5% and an effect of -1.675, motivated by the decreases registered in most of the activities comprising this sector. Among them, worth noting the decreases observed in *Metallurgy, manufacture of iron, steel and ferro-alloy products*.

In turn, **Energy** was the industrial sector that presented the greatest positive effect on the general index, with an annual variation of 12.8% and an effect of 1.390, mainly due to the increase registered in the *Manufacture of coke and refined petroleum products*.

Monthly rate evolution ²

The variation of the New Orders Received between June and July was -3,3%. This month-on-month rate was lower than that registered in the last two years (-2,7% in 2011 and -1,3% in 2010).

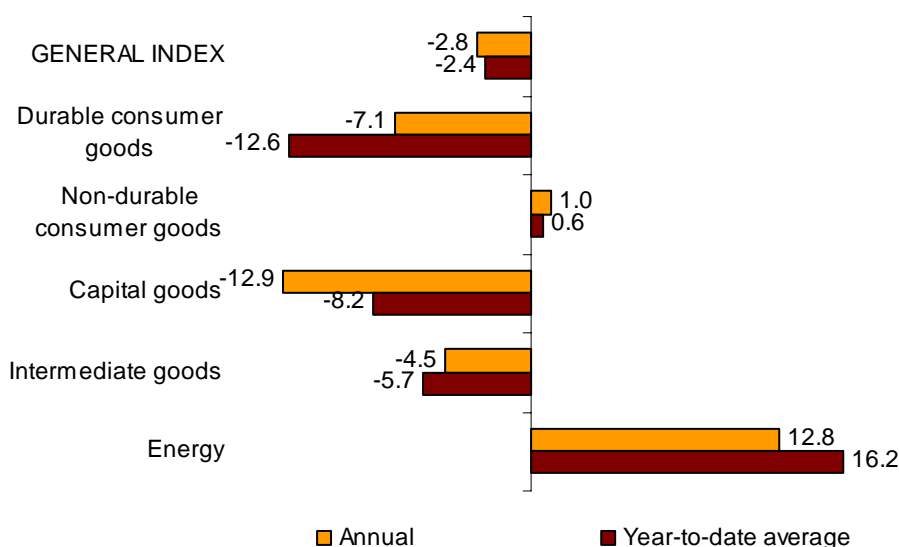


² In order to contribute to the analysis and interpretation of data, this section has been added with the monthly rate evolution of the INORI in July in the last years. The monthly rates of this type of series may have some degree of seasonal behaviour, therefore it is recommended that it be evaluated in relation to the item of data for the same month in previous years.

Year-to-date average rates

The average of the General Industrial New Orders Received Index in the first half of the year registered a variation rate of **-2.4%**, as compared with the same period of 2011. By economic destination of the goods, this variation rate was negative, in all of the industrial sectors, except Energy and Non-durable consumer goods.

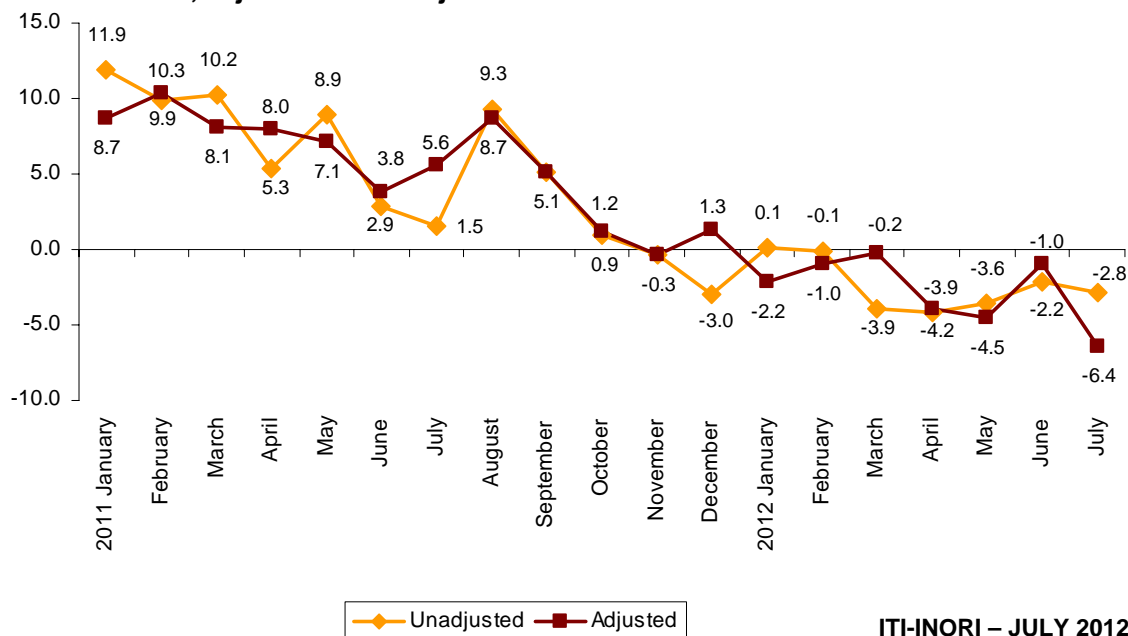
Annual and year-to-date average rates of INORI General index and by economic destination of the goods



Evolution of the INORI, adjusted for the calendar effect

After eliminating the calendar effect, that is, the difference between the number of working days in a given month in different years, the interannual variation of the INORI in the month of July was **-6.4%**, five points lower than that registered in June.

Annual evolution of the INORI General Index, adjusted and unadjusted



Industrial Turnover Indices. Base 2005

Industrial New Orders Received Indices. Base 2005

July 2012

Provisional data

18 September 2012

1. Industrial turnover indices by economic destination¹

	Index	% variation		Effect Annual
		Annual	Year-to-date average	
GENERAL INDEX	99.4	-2.0	-3.0	
1. CONSUMER GOODS	101.9	-1.8	-0.4	-0.570
1.1. DURABLE CONSUMER GOODS	52.9	-10.8	-11.8	-0.269
- Manufacture of consumer electronics, optical instruments and photographic equipment	8.7	-29.5	-39.3	-0.022
- Manufacture of household appliances	67.6	3.2	-4.8	0.020
- Manufacture of motorcycles, bicycles, vehicles for the disabled and others	32.5	-36.4	-37.5	-0.062
- Manufacture of furniture	57.9	-14.3	-11.7	-0.201
- Manufacture of jewellery, costume jewellery and musical instruments	103.2	-2.4	-1.5	-0.005
1.2. NON-DURABLE CONSUMER GOODS	110.0	-1.1	0.6	-0.301
- Food industries (except grain mill products and food for animals)	115.0	0.5	3.4	0.066
- Manufacture of beverages	120.9	3.8	1.7	0.145
- Manufacture of tobacco	66.4	23.8	9.2	0.033
- Manufacture of knitted fabrics, carpets, rope, non-woven fabrics, textile products for technical use and industrial and other textile products	78.2	-3.0	-4.9	-0.019
- Manufacture of garments	79.0	-15.2	-5.7	-0.233
- Leather and footwear industry	112.6	-6.1	-1.8	-0.067
- Graphic arts and reproduction of recorded media	54.3	-17.3	-15.6	-0.204
- Manufacture of cleaning articles, perfumes and cosmetics	101.1	-4.3	0.8	-0.059
- Manufacture of pharmaceutical products	151.7	2.1	-1.0	0.078
- Manufacture of sporting goods; games and toys and Other manufacturing industries	94.9	-10.0	-7.9	-0.040
2. CAPITAL GOODS	88.8	-6.3	-8.7	-1.402
- Manufacture of metal products for construction, containers made of metal, steam generators, weapons and ammunition	55.7	-15.5	-18.4	-0.371
- Manufacture of computers, peripherals and telecommunications equipment; appliances for measuring and navigation; radiation and medical and therapeutic equipment	63.0	-5.1	-10.4	-0.030
- Manufacture of machinery and equipment n.e.c.	91.2	-5.2	-6.2	-0.184
- Manufacture of motor vehicles, trailers and semi-trailers	88.1	-5.4	-9.8	-0.624
- Naval, railway, aircraft and spacecraft construction. Combat vehicles	175.0	-4.1	-0.4	-0.114
- Manufacture of medical and dental instruments and supplies	108.3	4.5	0.1	0.006
- Repair and installation of machinery and equipment	95.8	-6.8	-3.0	-0.085
3. INTERMEDIATE GOODS	92.2	-3.9	-6.6	-1.417
- Other mining and quarrying	68.9	-5.4	-8.1	-0.033
- Manufacture of grain mill products, starches, and food for animals	141.9	6.2	0.7	0.172
- Preparation and spinning of textile fibres. Manufacture of woven textiles. Textile finishings	59.6	-4.2	-8.6	-0.021
- Wood and cork industry	60.4	-4.4	-7.5	-0.057
- Paper industry	110.8	-1.1	-3.4	-0.029
- Chemical industry except cleaning articles, perfumes and cosmetics	110.3	-1.0	-1.2	-0.064
- Rubber and plastic material transformation industry	96.8	-6.5	-8.1	-0.282
- Manufacture of other non-metallic ore products	53.6	-12.3	-14.9	-0.508
- Metallurgy; manufacture of iron, steel and ferro-alloy products	99.2	-8.6	-11.6	-0.514
- Forging, stamping, embossing and rolling of metals. - Manufacture of tools, hardware goods, containers and other metal products	99.9	-3.3	-4.6	-0.159
- Manufacture of electronic components, assembled printed circuits, and magnetic and optical media	60.5	-36.0	-23.9	-0.106
- Manufacture of electrical material and equipment except household appliances	107.0	6.3	-3.5	0.184
4. ENERGY (Except supply of electrical energy, gas, steam, air conditioning)	158.9	13.2	16.4	1.380
- Extraction of anthracite, coal and lignite	28.1	-68.6	-13.1	..
- Extraction of crude oil, petroleum and natural gas
- Manufacture of coke and refined petroleum products	162.3	14.4	16.9	1.489

¹ Regulation (EC) no. 656/2007 of the European Commission.

(..) Data not available due to statistical secrecy.

2. Industrial turnover indices adjusted by calendar effects

	Original index	% variation		Adjusted index	% variation	
		Annual	Year-to-date average		Annual	Year-to-date average
General index	99.4	-2.0	-3.0	98.1	-6.1	-3.7
1. Consumer goods	101.9	-1.8	-0.4	100.8	-5.9	-1.4
1.1. Durable consumer goods	52.9	-10.8	-11.8	52.0	-15.5	-12.7
1.2. Non-durable consumer goods	110.0	-1.1	0.6	108.9	-5.0	-0.3
2. Capital goods	88.8	-6.3	-8.7	87.5	-10.3	-9.7
3. Intermediate goods	92.2	-3.9	-6.6	90.8	-8.2	-6.9
4. Energy*	158.9	13.2	16.4	158.3	11.9	16.2

*Except supply of electrical energy, gas, steam and air conditioning.

3. Interannual rates

Industrial turnover indices by economic destination

Period	General index		Consumer goods		Durable consumer goods		Non-durable consumer goods	
	Original	Adjusted ¹	Original	Adjusted ¹	Original	Adjusted ¹	Original	Adjusted ¹
2011 July *	2.3	7.0	-1.5	3.0	-13.2	-8.1	-0.3	4.0
August *	9.7	9.1	6.7	6.1	1.3	0.6	7.0	6.4
September *	4.3	4.3	0.7	0.7	-14.4	-14.4	2.3	2.3
October *	0.6	1.0	-0.5	-0.2	-17.3	-17.0	1.1	1.5
November *	-1.2	-1.2	-1.9	-1.9	-20.8	-20.8	0.1	0.1
December *	-3.2	1.8	-1.4	3.7	-16.8	-11.3	0.1	5.0
2012 January *	1.8	-0.8	3.4	0.7	-6.5	-9.6	4.2	1.6
February	1.3	-2.2	3.6	-1.3	-11.4	-15.6	5.0	0.4
March *	-6.6	-2.4	-2.8	1.5	-15.3	-10.5	-1.7	2.4
April	-4.6	-4.3	-3.4	-3.1	-15.3	-15.0	-2.4	-2.1
May *	-2.8	-3.9	1.4	0.3	-11.3	-12.5	2.5	1.5
June *	-6.7	-5.4	-2.4	-1.1	-11.2	-9.7	-1.6	-0.4
July	-2.0	-6.1	-1.8	-5.9	-10.8	-15.5	-1.1	-5.0

Period	Capital goods		Intermediate goods		Energy	
	Original	Adjusted ¹	Original	Adjusted ¹	Original	Adjusted ¹
2011 July *	0.1	4.8	0.4	5.3	32.6	34.2
August *	6.6	6.0	6.2	5.5	36.8	36.6
September *	4.0	4.0	1.6	1.6	31.4	31.4
October *	-1.0	-0.6	-3.0	-2.7	26.3	26.4
November *	-4.4	-4.4	-5.1	-5.1	28.2	28.2
December *	-11.4	-6.7	-4.5	0.8	16.6	18.1
2012 January *	-3.3	-5.9	-2.1	-4.8	22.4	21.6
February	-2.1	-7.8	-5.2	-6.2	28.4	28.1
March *	-14.7	-10.7	-11.5	-7.3	22.0	23.4
April	-10.4	-10.1	-6.6	-6.3	10.6	10.7
May *	-7.3	-8.4	-7.2	-8.3	12.9	12.5
June *	-14.7	-13.5	-8.4	-7.0	6.8	7.2
July	-6.3	-10.3	-3.9	-8.2	13.2	11.9

¹ Index rates adjusted for calendar effects.

* Data revised.

4. Industrial Turnover Indices by branch of activity (CNAE 2009)

	Index	% variation		Effect
		Annual	Year-to-date average	Annual
GENERAL INDEX	99.4	-2.0	-3.0	
B. Mining and quarrying industries	62.1	-18.2	-9.0	-0.142
Extraction of anthracite, coal and lignite	28.1	-68.6	-13.1	..
Extraction of crude oil, petroleum and natural gas
Other mining and quarrying	68.9	-5.4	-8.1	-0.033
C. Manufacturing industry	99.8	-1.9	-2.9	-1.867
Food industry	118.8	1.4	2.9	0.238
Manufacture of beverages	120.9	3.8	1.7	0.145
Manufacture of tobacco	66.4	23.8	9.2	0.033
Textile industry	68.7	-3.5	-6.6	-0.040
Manufacture of garments	79.0	-15.2	-5.7	-0.233
Leather and footwear industry	112.6	-6.1	-1.8	-0.067
Manufacture of wood and of products of wood and cork, except furniture; basketmaking and wickerwork	60.4	-4.4	-7.5	-0.057
Paper industry	110.8	-1.1	-3.4	-0.029
Graphic arts and reproduction of recorded media	54.3	-17.3	-15.6	-0.204
Manufacture of coke and refined petroleum products	162.3	14.4	16.9	1.489
Chemical industry	108.6	-1.6	-0.9	-0.123
Manufacture of pharmaceutical products	151.7	2.1	-1.0	0.078
Rubber and plastic material transformation industry	96.8	-6.5	-8.1	-0.282
Manufacture of other non-metallic ore products	53.6	-12.3	-14.9	-0.508
Metallurgy; manufacture of iron, steel and ferro-alloy products	99.2	-8.6	-11.6	-0.514
Manufacture of metal products, except machinery and equipment	80.6	-7.3	-9.1	-0.530
Manufacture of computer, electronic and optical products	44.2	-16.5	-16.5	-0.158
Manufacture of electrical material and equipment	97.1	5.7	-3.7	0.204
Manufacture of machinery and equipment n.e.c.	91.2	-5.2	-6.2	-0.184
Manufacture of motor vehicles, trailers and semi-trailers	88.1	-5.4	-9.8	-0.624
Manufacture of other transport material	149.4	-6.0	-2.8	-0.176
Manufacture of furniture	57.9	-14.3	-11.7	-0.201
Other manufacturing industries	99.6	-5.3	-4.6	-0.039
Repair and installation of machinery and equipment	95.8	-6.8	-3.0	-0.085

(..) Data not available due to statistical secrecy.

5. Industrial New Orders Received Indices by economic destination¹

	Index	% variation		Effect Annual
		Annual	Year-to-date average	
GENERAL INDEX	95.1	-2.8	-2.4	
1. CONSUMER GOODS	103.5	0.4	-0.5	0.130
1.1. DURABLE CONSUMER GOODS	51.5	-7.1	-12.6	-0.171
- Manufacture of consumer electronics, optical instruments and photographic equipment	9.2	-25.4	-38.2	-0.020
- Manufacture of household appliances	66.9	8.3	-5.2	0.052
- Manufacture of motorcycles, bicycles, vehicles for the disabled and others	25.5	-35.7	-42.3	-0.049
- Manufacture of furniture	56.4	-11.3	-12.8	-0.154
- Manufacture of jewellery, costume jewellery and musical instruments	102.1	-0.2	2.6	0.000
1.2. NON-DURABLE CONSUMER GOODS	112.1	1.0	0.6	0.301
- Food industries (except grain mill products and food for animals)	118.6	2.9	3.3	0.441
- Manufacture of beverages	133.3	6.3	3.1	0.268
- Manufacture of tobacco	67.1	25.2	9.4	0.036
- Manufacture of knitted fabrics, carpets, rope, non-woven fabrics, textile products for technical use and industrial and other textile products	74.8	-4.9	-4.4	-0.032
- Manufacture of garments	83.2	-10.7	-6.5	-0.170
- Leather and footwear industry	82.8	-9.0	-2.8	-0.078
- Graphic arts and reproduction of recorded media	56.9	-4.4	-13.4	-0.049
- Manufacture of cleaning articles, perfumes and cosmetics	101.2	-6.3	-0.3	-0.092
- Manufacture of pharmaceutical products	144.4	-0.6	-2.1	-0.023
- Manufacture of sporting goods; games and toys and Other manufacturing industries	104.4	0.4	-3.6	0.002
2. CAPITAL GOODS	73.5	-12.9	-8.2	-2.651
- Manufacture of metal products for construction, containers made of metal, steam generators, weapons and ammunition	61.1	-18.6	-14.5	-0.528
- Manufacture of computers, peripherals and telecommunications equipment; appliances for measuring and navigation; radiation and medical and therapeutic equipment	48.3	-10.0	-10.4	-0.050
- Manufacture of machinery and equipment n.e.c.	84.5	-7.5	0.7	-0.261
- Manufacture of motor vehicles, trailers and semi-trailers	78.4	-11.7	-13.4	-1.333
- Naval, railway, aircraft and spacecraft construction. Combat vehicles	38.0	13.4	38.8	0.071
- Manufacture of medical and dental instruments and supplies	102.4	7.1	2.6	0.009
- Repair and installation of machinery and equipment	87.1	-33.8	-1.4	-0.559
3. INTERMEDIATE GOODS	89.6	-4.5	-5.7	-1.675
- Other mining and quarrying	69.8	-6.1	-8.2	-0.038
- Manufacture of grain mill products, starches, and food for animals	141.0	7.1	1.2	0.203
- Preparation and spinning of textile fibres. Manufacture of woven textiles. Textile finishings	60.2	2.5	-4.7	0.013
- Wood and cork industry	59.2	-3.2	-6.8	-0.042
- Paper industry	110.6	-1.0	-2.7	-0.026
- Chemical industry except cleaning articles, perfumes and cosmetics	108.8	-3.6	-2.1	-0.231
- Rubber and plastic material transformation industry	91.2	-6.7	-8.6	-0.286
- Manufacture of other non-metallic ore products	53.4	-8.8	-12.8	-0.360
- Metallurgy; manufacture of iron, steel and ferro-alloy products	96.5	-9.3	-12.5	-0.562
- Forging, stamping, embossing and rolling of metals. - Manufacture of tools, hardware goods, containers and other metal products	95.8	-5.1	-5.1	-0.251
- Manufacture of electronic components, assembled printed circuits, and magnetic and optical media	60.6	-38.7	-25.3	-0.124
- Manufacture of electrical material and equipment except household appliances	96.4	1.0	8.1	0.029
4. ENERGY (Except supply of electrical energy, gas, steam, air conditioning)	158.1	12.8	16.2	1.390
- Extraction of anthracite, coal and lignite	19.3	-75.1	-16.4	..
- Extraction of crude oil, petroleum and natural gas
- Manufacture of coke and refined petroleum products	161.7	14.0	16.7	1.496

¹ Regulation (EC) no. 656/2007 of the European Commission.

(..) Data not available due to statistical secrecy.

6. Industrial New Orders indices adjusted by calendar effects

	Original index	% variation		Adjusted index	% variation	
		Annual	Year-to-date average		Annual	Year-to-date average
General index	95.1	-2.8	-2.4	94.2	-6.4	-2.8
1. Consumer goods	103.5	0.4	-0.5	102.5	-3.7	-1.5
1.1. Durable consumer goods	51.5	-7.1	-12.6	50.8	-11.1	-13.0
1.2. Non-durable consumer goods	112.1	1.0	0.6	111.0	-3.2	-0.4
2. Capital goods	73.5	-12.9	-8.2	72.6	-16.9	-8.9
3. Intermediate goods	89.6	-4.5	-5.7	88.3	-8.5	-6.3
4. Energy*	158.1	12.8	16.2	157.8	11.2	16.0

*Except supply of electrical energy, gas, steam and air conditioning.

7. Interannual rates

Industrial New Orders indices by economic destination

Period	General index		Consumer goods		Durable consumer goods		Non-durable consumer goods	
	Original	Adjusted ¹	Original	Adjusted ¹	Original	Adjusted ¹	Original	Adjusted ¹
2011 July *	1.5	5.6	-0.3	4.1	-14.7	-10.7	1.1	5.7
August *	9.3	8.7	7.7	7.1	-2.7	-3.3	8.4	7.8
September *	5.1	5.1	0.7	0.7	-16.9	-16.9	2.5	2.5
October *	0.9	1.2	-0.5	-0.2	-19.9	-19.6	1.4	1.7
November *	-0.3	-0.3	-2.9	-2.9	-18.8	-18.8	-1.3	-1.3
December *	-3.0	1.3	-3.5	1.4	-22.7	-18.6	-1.8	3.2
2012 January	0.1	-2.2	3.4	0.8	-12.0	-14.4	4.8	2.0
February	-0.1	-1.0	-1.7	-6.9	-13.1	-14.0	-0.6	-6.1
March *	-3.9	-0.2	-0.9	3.4	-12.5	-8.5	0.2	4.6
April	-4.2	-3.9	-4.0	-3.7	-18.5	-18.2	-2.8	-2.5
May *	-3.6	-4.5	1.2	0.1	-12.4	-13.4	2.4	1.2
June *	-2.2	-1.0	-1.6	-0.3	-12.9	-11.7	-0.6	0.7
July	-2.8	-6.4	0.4	-3.7	-7.1	-11.1	1.0	-3.2

Period	Capital goods		Intermediate goods		Energy	
	Original	Adjusted ¹	Original	Adjusted ¹	Original	Adjusted ¹
2011 July *	-3.6	1.2	-0.8	3.8	32.6	34.7
August *	-0.1	-0.8	7.8	7.1	36.7	36.4
September *	5.6	5.6	2.8	2.8	31.0	31.0
October *	0.5	0.9	-3.3	-3.0	27.0	27.1
November *	0.6	0.6	-4.8	-4.8	27.6	27.6
December *	-9.6	-4.5	-3.7	1.3	15.9	17.9
2012 January	-11.7	-14.2	-1.0	-3.6	22.0	20.8
February	-3.8	-8.1	-4.2	-7.4	28.3	27.9
March *	-9.8	-5.4	-9.1	-5.0	21.9	23.8
April	-7.3	-6.9	-7.0	-6.7	10.7	10.8
May *	-10.0	-11.1	-7.8	-8.8	12.6	12.2
June *	-1.1	0.4	-5.6	-4.3	6.8	7.3
July	-12.9	-16.9	-4.5	-8.5	12.8	11.2

¹ Index rates adjusted for calendar effects.

* Data revised.

8. Industrial New Orders Received Indices by branch of activity (CNAE 2009)

	Index	% variation		Effect Annual
		Annual	Year-to-date average	
GENERAL INDEX	95.1	-2.8	-2.4	
B. Mining and quarrying industries	61.3	-18.3	-9.4	-0.145
Extraction of anthracite, coal and lignite	19.3	-75.1	-16.4	..
Extraction of crude oil, petroleum and natural gas
Other mining and quarrying	69.8	-6.1	-8.2	-0.038
C. Manufacturing industry	95.5	-2.7	-2.4	-2.660
Food industry	121.8	3.6	2.9	0.644
Manufacture of beverages	133.3	6.3	3.1	0.268
Manufacture of tobacco	67.1	25.2	9.4	0.036
Textile industry	67.4	-1.7	-4.5	-0.019
Manufacture of garments	83.2	-10.7	-6.5	-0.170
Leather and footwear industry	82.8	-9.0	-2.8	-0.078
Manufacture of wood and of products of wood and cork, except furniture; basketmaking and wickerwork	59.2	-3.2	-6.8	-0.042
Paper industry	110.6	-1.0	-2.7	-0.026
graphic arts and reproduction of recorded media	56.9	-4.4	-13.4	-0.049
Manufacture of coke and refined petroleum products	161.7	14.0	16.7	1.496
Chemical industry	107.4	-4.1	-1.8	-0.323
Manufacture of pharmaceutical products	144.4	-0.6	-2.1	-0.023
Rubber and plastic material transformation industry	91.2	-6.7	-8.6	-0.286
Manufacture of other non-metallic ore products	53.4	-8.8	-12.8	-0.360
Metallurgy; manufacture of iron, steel and ferro-alloy products	96.5	-9.3	-12.5	-0.562
Manufacture of metal products, except machinery and equipment	80.6	-10.1	-8.4	-0.779
Manufacture of computer, electronic and optical products	37.2	-21.6	-17.6	-0.193
Manufacture of electrical material and equipment	89.0	2.3	5.8	0.081
Manufacture of machinery and equipment n.e.c.	84.5	-7.5	0.7	-0.261
Manufacture of motor vehicles, trailers and semi-trailers	78.4	-11.7	-13.4	-1.333
Manufacture of other transport material	35.8	3.3	25.7	0.022
Manufacture of furniture	56.4	-11.3	-12.8	-0.154
Other manufacturing industries	103.4	1.4	-0.8	0.010
Repair and installation of machinery and equipment	87.1	-33.8	-1.4	-0.559

(..) Data not available due to statistical secrecy.