

18 October 2012

**Industrial Turnover Indices (ITI). Base 2005**  
**Industrial New Orders Received Indices (INORI). Base 2005**  
August 2012. *Provisional data*

**The annual rate of the Industrial Turnover Index stands at 3.8% in August as compared with –2.1% in July**

**The annual variation rate of New Orders Received is 1.0%, as compared with –2.6% in July**

**Evolution of Industrial Turnover**

The Industrial Turnover Index (ITI) experienced an interannual variation of 3.8% in August, almost six points above than that registered in July.

By economic destination of the goods, the industrial sectors that presented a greater positive effect on the general index were:

- **Energy**, with an annual variation of 34.1% and an effect of 4.524 due to the increase registered in *Manufacture of coke and refined petroleum products*.
- **Non-durable consumer goods**, with an annual variation of 2.4% and an effect of 0.809 on the general index, motivated by the positive evolution of *Manufacture of other food products (except grain mill products and food for animals.)*

In turn, the industrial sectors that presented a negative effect on the general index were:

- **Intermediate goods**, with an annual rate of –3.9% and an effect of –1.377, due to the decreases registered in the majority of the activities comprising this sector. Among them, worth highlighting, by their influence, were *Metallurgy; manufacture of iron, steel and ferro-alloy products* and *Manufacture of other non-metallic ore products*.
- **Capital goods**, with an annual variation of –1.4% and an effect of –0.214, caused, mainly, by the drop in *Manufacture of structural metal products, containers of metal, steam generators, weapons and ammunition*.

A more detailed analysis showed the activities that most affected the annual rate of the ITI in the month of August.

#### Activities with the greatest positive effect on the annual rate of the ITI

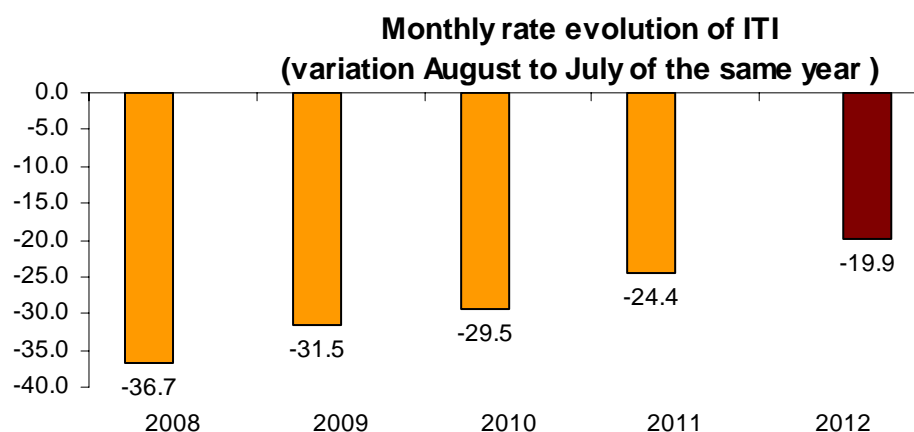
Activity (Basic aggregate of the ITI)	Annual rate (%)	Effect
Manufacture of coke and refined petroleum products	35.2	4.568
Manufacture of other food products (except milling and prepared animal feeds)	3.2	0.610
Manufacture of grain mill products, starches, and food for animals	7.7	0.288
Manufacture of beverages	5.1	0.257

#### Activities with the greatest negative effect on the annual rate of the ITI

Activity (Basic aggregate of the ITI)	Annual rate (%)	Effect
Metallurgy; manufacture of iron, steel and ferro-alloy products	-13.0	-0.715
Manufacture of metal products for construction, containers made of metal, steam generators, weapons and ammunition	-21.8	-0.619
Manufacture of non-metallic mineral products	-11.7	-0.489
Manufacture of cleaning items, perfumes and cosmetics	-9.5	-0.149

### Monthly rate evolution<sup>1</sup>

The variation of the Industrial Turnover Index between August and July was –19.9%. This month-on-month rate registered for the first time in the last five years a decrease lower than 20 points.



<sup>1</sup> In order to contribute to the analysis and interpretation of data, this section has been added with the monthly rate evolution of the ITI in August in the last years. The monthly rates of this type of series may have some degree of seasonal behaviour, therefore it is recommended that it be evaluated in relation to the item of data for the same month in previous years.

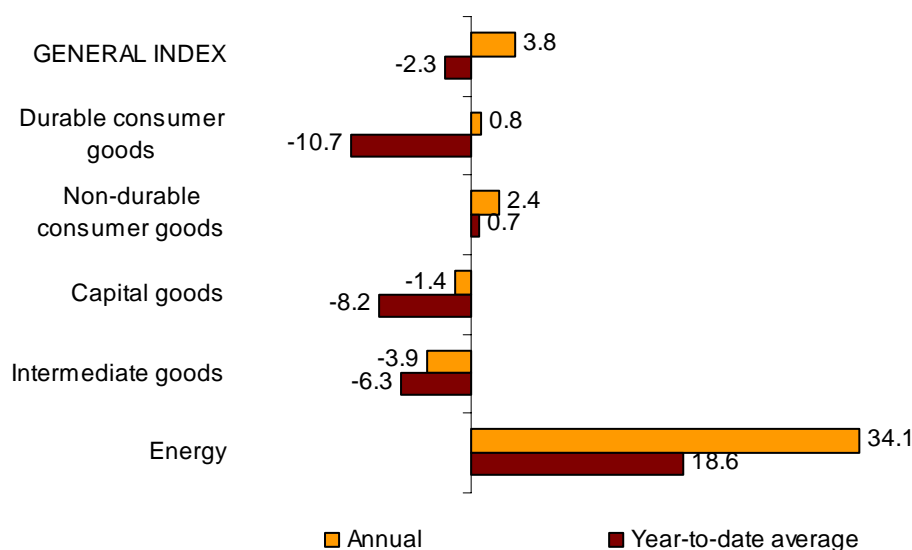
## Year-to-date average rates

The average rate of the Industrial Turnover Index registered a variation of **-2.3%** in the period from January to August, as compared with the same period of 2011.

By economic destination of the goods, this turnover rate was negative in Durable consumer goods (-10.7%), Capital goods (-8.2%) and Intermediate goods (-6.3%). Conversely, it was positive in Non-durable consumer goods (0.7%) and Energy (18.6%).

### Annual and year-to-date average rates of ITI

#### General index and by economic destination of the goods

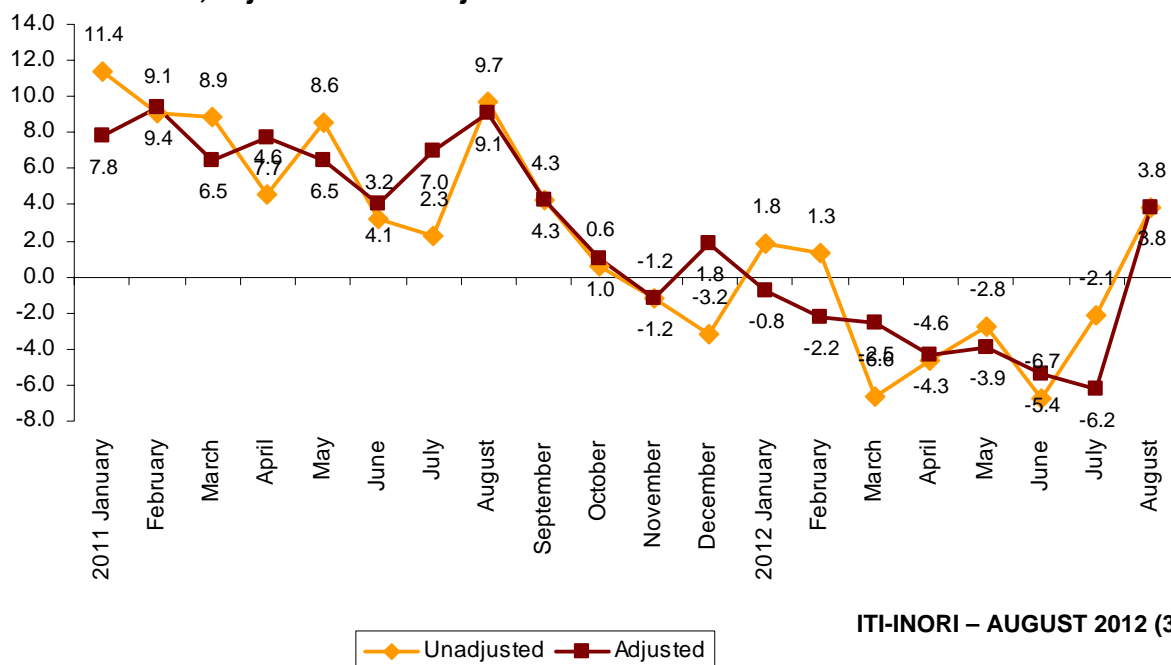


## Evolution of the ITI, adjusted for the calendar effect

After adjusting for the calendar effect, that is, the difference between the number of working days in a given month in different years, **the interannual variation of the ITI in the month of August was 3.8%, more than ten points higher than that registered in June.**

### Annual evolution of the ITI

#### General Index, adjusted and unadjusted



## Annual evolution of Industrial New Orders Received

The Industrial New Orders Received Index (INORI) experienced an interannual variation of 1.0% in August, more than three and a half points higher than that registered in July.

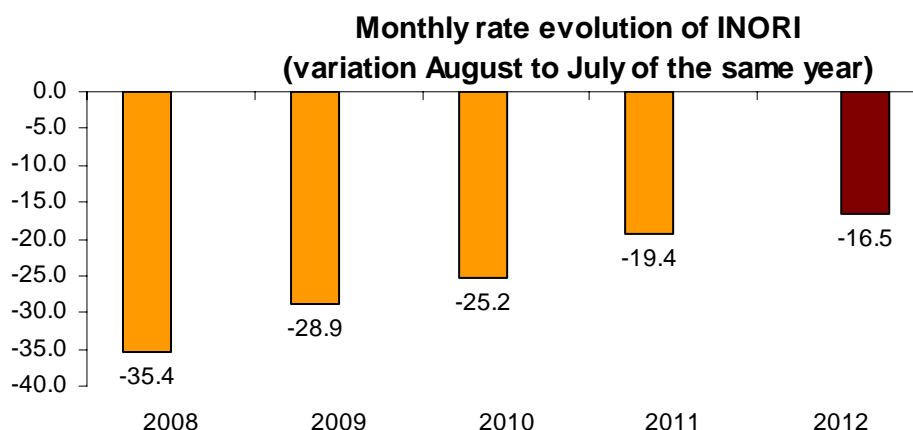
By economic destination of the goods, **Energy** registered a greater positive effect on the general index, with a interannual variation of 33.9%, and an effect of 4.353 caused, mainly, by the increase registered in *Manufacture of coke and refined petroleum products*.

In turn, the industrial sectors that presented the greatest negative effects on the general index were:

- **Intermediate goods**, with an annual variation of –6.3% and an effect of –2.230, motivated by the decreases registered in most of the activities comprising this sector. Among them, worth noting the decreases observed in *Metallurgy, manufacture of iron, steel and ferro-alloy products* and in *Manufacture of non-metallic mineral products*. Nonetheless, worth noting the increases in *Manufacture of grain mill products and food for animals*.
- **Capital goods**, with an annual variation of –11.0% and an effect of –1.811, caused by the negative evolution in new orders received in the *Manufacture of motor vehicles, trailers and semi-trailers* and in *Manufacture of machinery and equipment n.e.c.*

## Monthly rate evolution <sup>2</sup>

The variation of the New Orders Received between August and July was –16.5%. This month-on-month rate was higher than that registered in the last four.

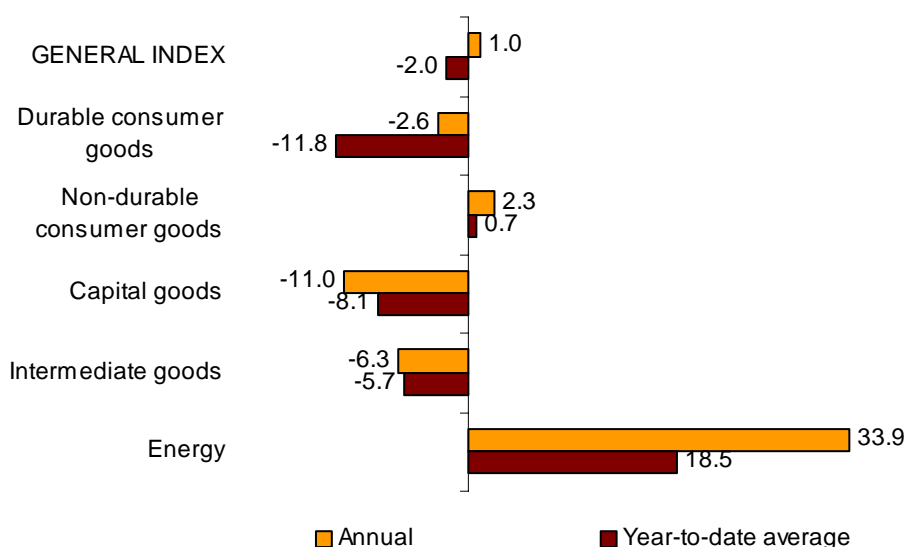


<sup>2</sup> In order to contribute to the analysis and interpretation of data, this section has been added with the monthly rate evolution of the INORI in August in the last years. The monthly rates of this type of series may have some degree of seasonal behaviour, therefore it is recommended that it be evaluated in relation to the item of data for the same month in previous years.

## Year-to-date average rates

The average of the General Industrial New Orders Received Index in the first eight months of the year registered a variation rate of **-2.0%**, as compared with the same period of 2011. By economic destination of the goods, this variation rate was negative, in all of the industrial sectors, except Energy and Non-durable consumer goods.

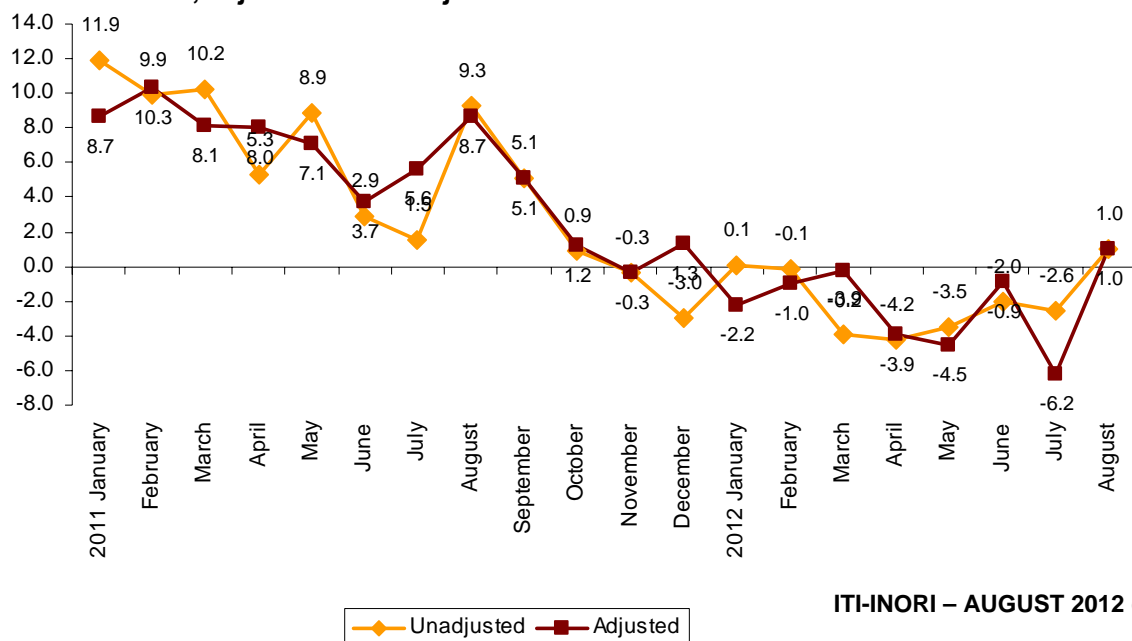
### Annual and year-to-date average rates of INORI General index and by economic destination of the goods



## Evolution of the INORI, adjusted for the calendar effect

After eliminating the calendar effect, that is, the difference between the number of working days in a given month in different years, **the interannual variation of the INORI in the month of August was 1.0%, seven points higher than that registered in July.**

### Annual evolution of the INORI General Index, adjusted and unadjusted



# Industrial Turnover Indices. Base 2005

## Industrial New Orders Received Indices. Base 2005

### August 2012

Provisional data

18 October 2012

#### 1. Industrial turnover indices by economic destination<sup>1</sup>

	Index	% variation		Effect Annual
		Annual	Year-to-date average	
<b>GENERAL INDEX</b>	<b>79.5</b>	<b>3.8</b>	<b>-2.3</b>	
<b>1. CONSUMER GOODS</b>	<b>94.0</b>	<b>2.3</b>	<b>-0.2</b>	<b>0.825</b>
1.1. DURABLE CONSUMER GOODS	36.9	0.8	-10.7	0.016
- Manufacture of consumer electronics, optical instruments and photographic equipment	5.3	-39.3	-39.3	-0.028
- Manufacture of household appliances	52.0	2.6	-4.0	0.017
- Manufacture of motorcycles, bicycles, vehicles for the disabled and others	22.6	-10.1	-35.3	-0.011
- Manufacture of furniture	38.2	2.0	-10.5	0.020
- Manufacture of jewellery, costume jewellery and musical instruments	73.4	11.1	-0.4	0.018
1.2. NON-DURABLE CONSUMER GOODS	103.4	2.4	0.7	0.809
- Food industries (except grain mill products and food for animals)	117.1	3.2	3.2	0.610
- Manufacture of beverages	121.9	5.1	2.0	0.257
- Manufacture of tobacco	46.0	-18.4	6.2	-0.035
- Manufacture of knitted fabrics, carpets, rope, non-woven fabrics, textile products for technical use and industrial and other textile products	45.7	5.9	-4.1	0.027
- Manufacture of garments	84.0	5.0	-4.3	0.087
- Leather and footwear industry	83.2	2.6	-1.1	0.026
- Graphic arts and reproduction of recorded media	53.5	-6.9	-14.2	-0.095
- Manufacture of cleaning articles, perfumes and cosmetics	82.9	-9.5	-0.4	-0.149
- Manufacture of pharmaceutical products	105.8	1.3	-1.1	0.043
- Manufacture of sporting goods; games and toys and Other manufacturing industries	70.5	11.8	-6.2	0.037
<b>2. CAPITAL GOODS</b>	<b>47.4</b>	<b>-1.4</b>	<b>-8.2</b>	<b>-0.214</b>
- Manufacture of metal products for construction, containers made of metal, steam generators, weapons and ammunition	46.1	-21.8	-18.8	-0.619
- Manufacture of computers, peripherals and telecommunications equipment; appliances for measuring and navigation; radiation and medical and therapeutic equipment	40.1	3.0	-10.0	0.014
- Manufacture of machinery and equipment n.e.c.	65.0	4.5	-5.1	0.136
- Manufacture of motor vehicles, trailers and semi-trailers	38.8	1.9	-9.3	0.120
- Naval, railway, aircraft and spacecraft construction. Combat vehicles	51.1	18.7	1.6	0.162
- Manufacture of medical and dental instruments and supplies	80.4	11.9	1.2	0.014
- Repair and installation of machinery and equipment	81.7	-3.0	-3.1	-0.041
<b>3. INTERMEDIATE GOODS</b>	<b>68.3</b>	<b>-3.9</b>	<b>-6.3</b>	<b>-1.377</b>
- Other mining and quarrying	72.5	-6.6	-7.9	-0.055
- Manufacture of grain mill products, starches, and food for animals	146.2	7.7	1.5	0.288
- Preparation and spinning of textile fibres. Manufacture of woven textiles. Textile finishings	20.3	-4.4	-8.5	-0.010
- Wood and cork industry	33.6	-8.0	-7.7	-0.081
- Paper industry	92.3	-2.5	-3.1	-0.076
- Chemical industry except cleaning articles, perfumes and cosmetics	89.1	-0.1	-1.1	-0.004
- Rubber and plastic material transformation industry	70.5	-3.6	-7.7	-0.147
- Manufacture of other non-metallic ore products	41.2	-11.7	-14.6	-0.489
- Metallurgy; manufacture of iron, steel and ferro-alloy products	66.0	-13.0	-11.7	-0.715
- Forging, stamping, embossing and rolling of metals. - Manufacture of tools, hardware goods, containers and other metal products	60.6	-0.2	-4.3	-0.007
- Manufacture of electronic components, assembled printed circuits, and magnetic and optical media	45.1	-33.7	-25.0	-0.094
- Manufacture of electrical material and equipment except household appliances	70.2	0.4	-3.2	0.012
<b>4. ENERGY (Except supply of electrical energy, gas, steam, air conditioning)</b>	<b>180.1</b>	<b>34.1</b>	<b>18.6</b>	<b>4.524</b>
- Extraction of anthracite, coal and lignite	82.7	-18.9	-16.1	..
- Extraction of crude oil, petroleum and natural gas	..	..	..	..
- Manufacture of coke and refined petroleum products	182.8	35.2	19.2	4.568

<sup>1</sup> Regulation (EC) no. 656/2007 of the European Commission.

(..) Data not available due to statistical secrecy.

## 2. Industrial turnover indices adjusted by calendar effects

	Original index	% variation		Adjusted index	% variation	
		Annual	Year-to-date average		Annual	Year-to-date average
<b>General index</b>	<b>79.5</b>	<b>3.8</b>	<b>-2.3</b>	<b>77.5</b>	<b>3.8</b>	<b>-3.0</b>
1. Consumer goods	94.0	2.3	-0.2	91.8	2.3	-1.0
1.1. Durable consumer goods	36.9	0.8	-10.7	35.7	0.8	-11.5
1.2. Non-durable consumer goods	103.4	2.4	0.7	101.2	2.4	-0.1
2. Capital goods	47.4	-1.4	-8.2	46.1	-1.4	-9.1
3. Intermediate goods	68.3	-3.9	-6.3	66.4	-3.9	-6.6
4. Energy*	180.1	34.1	18.6	178.8	34.1	18.5

\*Except supply of electrical energy, gas, steam and air conditioning.

### 3. Interannual rates

#### Industrial turnover indices by economic destination

Period	General index		Consumer goods		Durable consumer goods		Non-durable consumer goods	
	Original	Adjusted <sup>1</sup>	Original	Adjusted <sup>1</sup>	Original	Adjusted <sup>1</sup>	Original	Adjusted <sup>1</sup>
2011 August	9.7	9.1	6.7	6.1	1.3	0.6	7.0	6.4
September	4.3	4.3	0.7	0.7	-14.4	-14.4	2.3	2.3
October	0.6	1.0	-0.5	-0.2	-17.3	-17.0	1.1	1.5
November	-1.2	-1.2	-1.9	-1.9	-20.8	-20.8	0.1	0.1
December	-3.2	1.8	-1.4	3.7	-16.8	-11.3	0.1	5.0
2012 January	1.8	-0.8	3.4	0.7	-6.5	-9.6	4.2	1.6
February *	1.3	-2.2	3.6	-1.4	-11.4	-15.6	5.0	0.3
March *	-6.6	-2.5	-3.0	1.3	-15.3	-10.5	-1.9	2.2
April *	-4.6	-4.3	-3.5	-3.2	-15.3	-15.0	-2.6	-2.3
May *	-2.8	-3.9	1.2	0.1	-11.4	-12.6	2.4	1.3
June *	-6.7	-5.4	-2.5	-1.2	-11.3	-9.8	-1.8	-0.5
July *	-2.1	-6.2	-2.0	-6.1	-10.2	-14.9	-1.3	-5.2
August	3.8	3.8	2.3	2.3	0.8	0.8	2.4	2.4

Period	Capital goods		Intermediate goods		Energy	
	Original	Adjusted <sup>1</sup>	Original	Adjusted <sup>1</sup>	Original	Adjusted <sup>1</sup>
2011 August	6.6	6.0	6.2	5.5	36.8	36.6
September	4.0	4.0	1.6	1.6	31.4	31.4
October	-1.0	-0.6	-3.0	-2.7	26.3	26.4
November	-4.4	-4.4	-5.1	-5.1	28.2	28.2
December	-11.4	-6.7	-4.5	0.8	16.6	18.1
2012 January	-3.3	-5.9	-2.1	-4.8	22.4	21.6
February *	-2.2	-7.9	-5.2	-6.2	28.4	28.1
March *	-14.7	-10.8	-11.5	-7.3	22.0	23.4
April *	-10.4	-10.1	-6.6	-6.3	10.6	10.7
May *	-7.4	-8.4	-7.1	-8.2	12.9	12.5
June *	-14.7	-13.5	-8.3	-7.0	6.8	7.2
July *	-5.9	-9.9	-4.2	-8.5	12.9	11.7
August	-1.4	-1.4	-3.9	-3.9	34.1	34.1

<sup>1</sup> Index rates adjusted for calendar effects.

\* Data revised.



#### 4. Industrial Turnover Indices by branch of activity (CNAE 2009)

	Index	% variation		Effect
		Annual	Year-to-date average	Annual
<b>GENERAL INDEX</b>	<b>79.5</b>	<b>3.8</b>	<b>-2.3</b>	
<b>B. Mining and quarrying industries</b>	<b>74.4</b>	<b>-9.1</b>	<b>-9.2</b>	<b>-0.100</b>
Extraction of anthracite, coal and lignite	82.7	-18.9	-16.1	..
Extraction of crude oil, petroleum and natural gas	..	..	..	..
Other mining and quarrying	72.5	-6.6	-7.9	-0.055
<b>C. Manufacturing industry</b>	<b>79.6</b>	<b>3.9</b>	<b>-2.2</b>	<b>3.854</b>
Food industry	121.2	3.9	2.9	0.898
Manufacture of beverages	121.9	5.1	2.0	0.257
Manufacture of tobacco	46.0	-18.4	6.2	-0.035
Textile industry	32.8	2.4	-6.1	0.017
Manufacture of garments	84.0	5.0	-4.3	0.087
Leather and footwear industry	83.2	2.6	-1.1	0.026
Manufacture of wood and of products of wood and cork, except furniture; basketmaking and wickerwork	33.6	-8.0	-7.7	-0.081
Paper industry	92.3	-2.5	-3.1	-0.076
Graphic arts and reproduction of recorded media	53.5	-6.9	-14.2	-0.095
Manufacture of coke and refined petroleum products	182.8	35.2	19.2	4.568
Chemical industry	87.9	-1.9	-1.0	-0.153
Manufacture of pharmaceutical products	105.8	1.3	-1.1	0.043
Rubber and plastic material transformation industry	70.5	-3.6	-7.7	-0.147
Manufacture of other non-metallic ore products	41.2	-11.7	-14.6	-0.489
Metallurgy; manufacture of iron, steel and ferro-alloy products	66.0	-13.0	-11.7	-0.715
Manufacture of metal products, except machinery and equipment	54.3	-9.5	-9.2	-0.627
Manufacture of computer, electronic and optical products	29.2	-13.4	-16.6	-0.109
Manufacture of electrical material and equipment	65.6	0.9	-3.3	0.029
Manufacture of machinery and equipment n.e.c.	65.0	4.5	-5.1	0.136
Manufacture of motor vehicles, trailers and semi-trailers	38.8	1.9	-9.3	0.120
Manufacture of other transport material	46.0	15.4	-0.9	0.151
Manufacture of furniture	38.2	2.0	-10.5	0.020
Other manufacturing industries	73.1	11.6	-3.1	0.070
Repair and installation of machinery and equipment	81.7	-3.0	-3.1	-0.041

(..) Data not available due to statistical secrecy.

## 5. Industrial New Orders Received Indices by economic destination<sup>1</sup>

	Index	% variation		Effect Annual
		Annual	Year-to-date average	
<b>GENERAL INDEX</b>	<b>79.6</b>	<b>1.0</b>	<b>-2.0</b>	
<b>1. CONSUMER GOODS</b>	<b>94.3</b>	<b>2.0</b>	<b>-0.3</b>	<b>0.704</b>
1.1. DURABLE CONSUMER GOODS	36.5	-2.6	-11.8	-0.052
- Manufacture of consumer electronics, optical instruments and photographic equipment	5.6	-37.6	-38.2	-0.026
- Manufacture of household appliances	54.4	-0.5	-4.9	-0.003
- Manufacture of motorcycles, bicycles, vehicles for the disabled and others	22.4	-18.0	-40.3	-0.021
- Manufacture of furniture	35.6	-2.7	-12.0	-0.026
- Manufacture of jewellery, costume jewellery and musical instruments	79.1	15.7	3.8	0.025
1.2. NON-DURABLE CONSUMER GOODS	103.7	2.3	0.7	0.756
- Food industries (except grain mill products and food for animals)	118.5	2.2	2.9	0.425
- Manufacture of beverages	133.4	3.9	3.1	0.212
- Manufacture of tobacco	46.0	-18.4	6.1	-0.034
- Manufacture of knitted fabrics, carpets, rope, non-woven fabrics, textile products for technical use and industrial and other textile products	46.5	8.4	-3.4	0.037
- Manufacture of garments	78.3	6.5	-5.1	0.102
- Leather and footwear industry	51.6	4.4	-1.7	0.026
- Graphic arts and reproduction of recorded media	47.3	-7.2	-14.2	-0.085
- Manufacture of cleaning articles, perfumes and cosmetics	83.4	-7.6	-1.1	-0.114
- Manufacture of pharmaceutical products	106.6	3.4	-0.9	0.111
- Manufacture of sporting goods; games and toys and Other manufacturing industries	68.0	29.7	-1.2	0.076
<b>2. CAPITAL GOODS</b>	<b>48.8</b>	<b>-11.0</b>	<b>-8.1</b>	<b>-1.811</b>
- Manufacture of metal products for construction, containers made of metal, steam generators, weapons and ammunition	48.6	-4.9	-13.7	-0.117
- Manufacture of computers, peripherals and telecommunications equipment; appliances for measuring and navigation; radiation and medical and therapeutic equipment	32.0	-6.3	-10.7	-0.024
- Manufacture of machinery and equipment n.e.c.	55.4	-20.0	-1.1	-0.654
- Manufacture of motor vehicles, trailers and semi-trailers	43.9	-18.5	-13.3	-1.582
- Naval, railway, aircraft and spacecraft construction. Combat vehicles	36.2	9.2	37.5	0.060
- Manufacture of medical and dental instruments and supplies	74.9	6.0	2.9	0.007
- Repair and installation of machinery and equipment	104.2	44.3	2.4	0.500
<b>3. INTERMEDIATE GOODS</b>	<b>67.7</b>	<b>-6.3</b>	<b>-5.7</b>	<b>-2.230</b>
- Other mining and quarrying	73.4	-7.0	-8.0	-0.058
- Manufacture of grain mill products, starches, and food for animals	144.5	7.3	2.0	0.263
- Preparation and spinning of textile fibres. Manufacture of woven textiles. Textile finishings	25.2	-12.3	-4.8	-0.037
- Wood and cork industry	33.5	-3.9	-6.9	-0.036
- Paper industry	90.2	-2.2	-1.6	-0.061
- Chemical industry except cleaning articles, perfumes and cosmetics	92.7	4.3	-1.3	0.267
- Rubber and plastic material transformation industry	69.4	-8.5	-8.6	-0.351
- Manufacture of other non-metallic ore products	40.4	-11.4	-12.8	-0.452
- Metallurgy; manufacture of iron, steel and ferro-alloy products	67.5	-18.9	-13.0	-1.112
- Forging, stamping, embossing and rolling of metals. - Manufacture of tools, hardware goods, containers and other metal products	58.4	-8.0	-5.5	-0.306
- Manufacture of electronic components, assembled printed circuits, and magnetic and optical media	42.5	-27.7	-25.5	-0.065
- Manufacture of electrical material and equipment except household appliances	61.5	-10.9	6.4	-0.282
<b>4. ENERGY (Except supply of electrical energy, gas, steam, air conditioning)</b>	<b>179.2</b>	<b>33.9</b>	<b>18.5</b>	<b>4.353</b>
- Extraction of anthracite, coal and lignite	68.2	-16.7	-17.5	..
- Extraction of crude oil, petroleum and natural gas	..	..	..	..
- Manufacture of coke and refined petroleum products	182.2	34.7	19.0	4.384

<sup>1</sup> Regulation (EC) no. 656/2007 of the European Commission.

(..) Data not available due to statistical secrecy.

## 6. Industrial New Orders indices adjusted by calendar effects

	Original index	% variation		Adjusted index	% variation	
		Annual	Year-to-date average		Annual	Year-to-date average
<b>General index</b>	<b>79.6</b>	<b>1.0</b>	<b>-2.0</b>	<b>78.0</b>	<b>1.0</b>	<b>-2.3</b>
1. Consumer goods	94.3	2.0	-0.3	92.2	2.0	-1.2
1.1. Durable consumer goods	36.5	-2.6	-11.8	35.5	-2.6	-12.2
1.2. Non-durable consumer goods	103.7	2.3	0.7	101.5	2.3	-0.2
2. Capital goods	48.8	-11.0	-8.1	47.6	-11.0	-8.8
3. Intermediate goods	67.7	-6.3	-5.7	65.9	-6.3	-6.3
4. Energy*	179.2	33.9	18.5	178.0	33.9	18.3

\*Except supply of electrical energy, gas, steam and air conditioning.

## 7. Interannual rates

### Industrial New Orders indices by economic destination

Period	General index		Consumer goods		Durable consumer goods		Non-durable consumer goods	
	Original	Adjusted <sup>1</sup>	Original	Adjusted <sup>1</sup>	Original	Adjusted <sup>1</sup>	Original	Adjusted <sup>1</sup>
2011 August	9.3	8.7	7.7	7.1	-2.7	-3.3	8.4	7.8
September	5.1	5.1	0.7	0.7	-16.9	-16.9	2.5	2.5
October	0.9	1.2	-0.5	-0.2	-19.9	-19.6	1.4	1.7
November	-0.3	-0.3	-2.9	-2.9	-18.8	-18.8	-1.3	-1.3
December	-3.0	1.3	-3.5	1.4	-22.7	-18.6	-1.8	3.2
2012 January *	0.1	-2.2	3.5	0.9	-12.0	-14.4	4.9	2.1
February *	-0.1	-1.0	-1.6	-6.9	-13.1	-14.0	-0.6	-6.0
March *	-3.9	-0.2	-0.9	3.4	-12.5	-8.5	0.1	4.6
April *	-4.2	-3.9	-3.9	-3.6	-18.5	-18.2	-2.7	-2.3
May *	-3.5	-4.5	1.0	0.0	-12.4	-13.4	2.2	1.1
June *	-2.0	-0.9	-1.6	-0.3	-13.0	-11.8	-0.6	0.7
July *	-2.6	-6.2	-0.3	-4.4	-7.2	-11.2	0.2	-3.9
August	1.0	1.0	2.0	2.0	-2.6	-2.6	2.3	2.3

Period	Capital goods		Intermediate goods		Energy	
	Original	Adjusted <sup>1</sup>	Original	Adjusted <sup>1</sup>	Original	Adjusted <sup>1</sup>
2011 August	-0.1	-0.8	7.8	7.1	36.7	36.4
September	5.6	5.6	2.8	2.8	31.0	31.0
October	0.5	0.9	-3.3	-3.0	27.0	27.1
November	0.6	0.6	-4.8	-4.8	27.6	27.6
December	-9.6	-4.5	-3.7	1.4	15.9	17.9
2012 January *	-11.7	-14.2	-1.0	-3.6	22.0	20.8
February *	-3.8	-8.1	-4.2	-7.4	28.3	27.9
March *	-9.8	-5.4	-9.1	-5.0	21.9	23.8
April *	-7.3	-6.9	-7.0	-6.7	10.7	10.8
May *	-10.0	-11.1	-7.6	-8.6	12.6	12.2
June *	-0.9	0.6	-5.3	-4.0	6.8	7.3
July *	-10.9	-14.9	-4.4	-8.4	12.7	11.1
August	-11.0	-11.0	-6.3	-6.3	33.9	33.9

<sup>1</sup> Index rates adjusted for calendar effects.

\* Data revised.

## 8. Industrial New Orders Received Indices by branch of activity (CNAE 2009)

	Index	% variation		Effect Annual
		Annual	Year-to-date average	
<b>GENERAL INDEX</b>	<b>79.6</b>	<b>1.0</b>	<b>-2.0</b>	
<b>B. Mining and quarrying industries</b>	<b>72.6</b>	<b>-8.6</b>	<b>-9.3</b>	<b>-0.089</b>
Extraction of anthracite, coal and lignite	68.2	-16.7	-17.5	..
Extraction of crude oil, petroleum and natural gas	..	..	..	..
Other mining and quarrying	73.4	-7.0	-8.0	-0.058
<b>C. Manufacturing industry</b>	<b>79.7</b>	<b>1.1</b>	<b>-1.9</b>	<b>1.107</b>
Food industry	122.2	3.1	2.8	0.688
Manufacture of beverages	133.4	3.9	3.1	0.212
Manufacture of tobacco	46.0	-18.4	6.1	-0.034
Textile industry	35.7	0.0	-4.0	0.000
Manufacture of garments	78.3	6.5	-5.1	0.102
Leather and footwear industry	51.6	4.4	-1.7	0.026
Manufacture of wood and of products of wood and cork, except furniture; basketmaking and wickerwork	33.5	-3.9	-6.9	-0.036
Paper industry	90.2	-2.2	-1.6	-0.061
graphic arts and reproduction of recorded media	47.3	-7.2	-14.2	-0.085
Manufacture of coke and refined petroleum products	182.2	34.7	19.0	4.384
Chemical industry	90.9	2.0	-1.2	0.154
Manufacture of pharmaceutical products	106.6	3.4	-0.9	0.111
Rubber and plastic material transformation industry	69.4	-8.5	-8.6	-0.351
Manufacture of other non-metallic ore products	40.4	-11.4	-12.8	-0.452
Metallurgy; manufacture of iron, steel and ferro-alloy products	67.5	-18.9	-13.0	-1.112
Manufacture of metal products, except machinery and equipment	54.1	-6.8	-8.4	-0.423
Manufacture of computer, electronic and optical products	24.9	-16.7	-18.0	-0.116
Manufacture of electrical material and equipment	59.7	-8.7	4.4	-0.285
Manufacture of machinery and equipment n.e.c.	55.4	-20.0	-1.1	-0.654
Manufacture of motor vehicles, trailers and semi-trailers	43.9	-18.5	-13.3	-1.582
Manufacture of other transport material	33.7	5.0	25.0	0.038
Manufacture of furniture	35.6	-2.7	-12.0	-0.026
Other manufacturing industries	72.2	20.3	0.9	0.109
Repair and installation of machinery and equipment	104.2	44.3	2.4	0.500

(..) Data not available due to statistical secrecy.