

18 January 2013

Industrial Turnover Indices (ITI). Base 2005
Industrial New Orders Received Indices (INORI). Base 2005
November 2012. *Provisional data*

The annual rate of the Industrial Turnover Index in the Industry stands at –4.0% in November, as compared with 5.3% in October

The annual variation rate of New Orders Received is –1.5%, as compared with 5.5% in October

Evolution of Industrial Turnover

The Industrial Turnover Index (ITI) experienced an annual variation of –4.0% in November, more than nine points below that registered in October.

By economic destination of the goods, the industrial sectors that presented a greater negative effect on the general index were:

- **Intermediate goods**, with an annual rate of –7.0% and an effect of –2.532, due to the decrease registered in the most of the activities comprising this sector. Among them, highlighting, by their influence, were *Metallurgy; manufacture of iron, steel and ferro-alloy products*, the *Forging, pressing, stamping and roll-forming of metal*; *powder metallurgy*, *Manufacture of cutlery and silverware, tools and hardware* and *Manufacture of other non-metallic mineral products*.

Nevertheless, within this sector worth noting the increase of the industrial turnover of *Manufacture of grain mill products, starches and starch products*.

- **Capital goods**, with an annual rate of –6.8% and an effect of –1.572. Almost all activities comprising this sector presented a negative annual evolution of their industrial turnover. Among them, highlighting, by their influence, the *Manufacture of motor vehicles, trailers and semi-trailers*. The only activity of this sector with positive annual evolution was *Naval, railway, aircraft and spacecraft construction. Combat vehicles*.

In turn, the sector with the positive effect on the general index was **Energy**, with an annual variation of 7.3% and an effect of 0.772, mainly, due to the rise of *Manufacture of coke and refined petroleum products*.

A more detailed analysis showed the activities that most affected the annual rate of the ITI in the month of November.

Activities with the greatest negative effect on the annual rate of the ITI

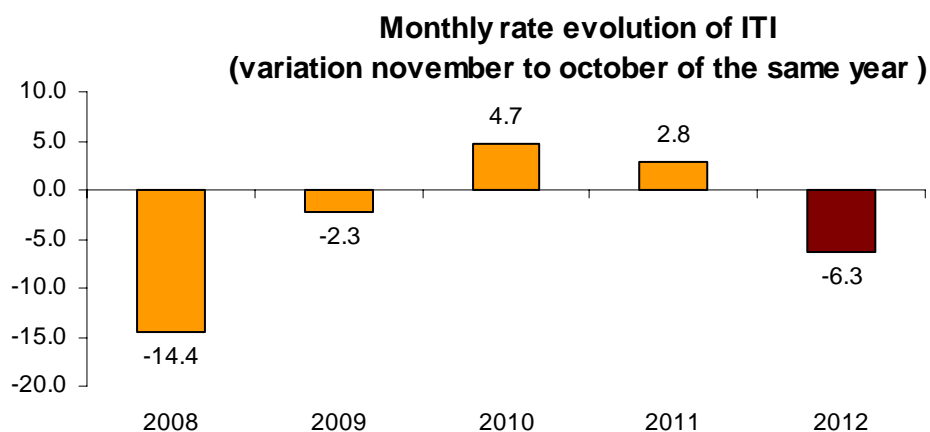
Activity (Basic aggregate of the ITI)	Annual rate (%)	Effect
Manufacture of motor vehicles, trailers and semi-trailers	-10.2	-1.247
Metallurgy; manufacture of iron, steel and ferro-alloy products	-13.6	-0.817
Forging, stamping, embossing and rolling of metals. Manufacture of tools, hardware goods, containers and other metal products	-13.6	-0.676
Manufacture of other non-metallic ore products	-16.3	-0.602

Activities with the greatest positive effect on the annual rate of the ITI

Activity (Basic aggregate of the ITI)	Annual rate (%)	Effect
Manufacture of coke and refined petroleum products	8.2	0.849
Naval, railway, aircraft and spacecraft construction. Combat vehicles	16.1	0.430
Food industries (except grain mill products and food for animals)	2.5	0.384
Manufacture of grain mill products, starches, and food for animals	8.1	0.245

Monthly rate performance ¹

The variation of the Industrial Turnover Index between November and October was –6.3%. This month-on-month rate of November was the lowest in the last four years.

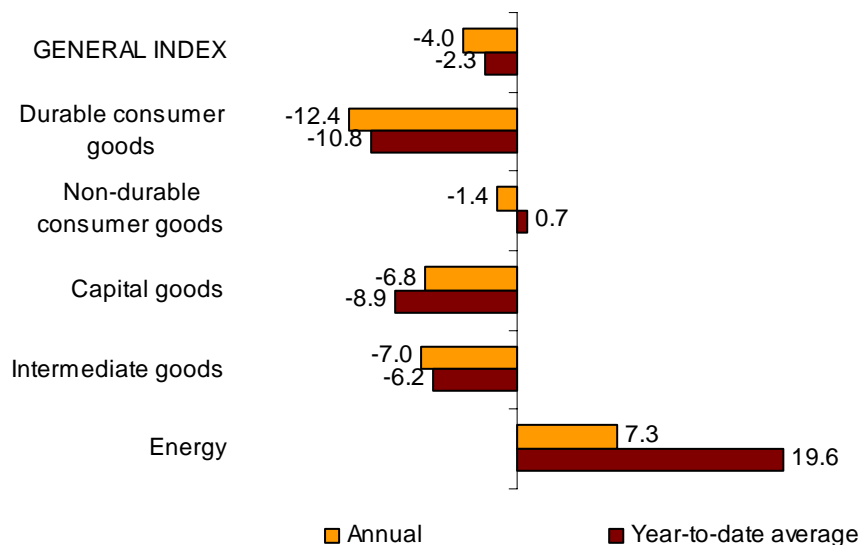


¹ In order to contribute to the analysis and interpretation of data, this section has been added with the monthly rate evolution of the ITI in the last years. The monthly rates of this type of series may have some degree of seasonal behaviour, therefore it is recommended that it be evaluated in relation to the item of data for the same month in previous years.

Year-to-date average rates

The average rate of the Industrial Turnover Index registered a variation of **-2.3%** in the period from January to November, as compared with the same period of 2011. By economic destination of the goods, the rate is negative in all industrial sectors, except in Energy and Non-durable consumer goods.

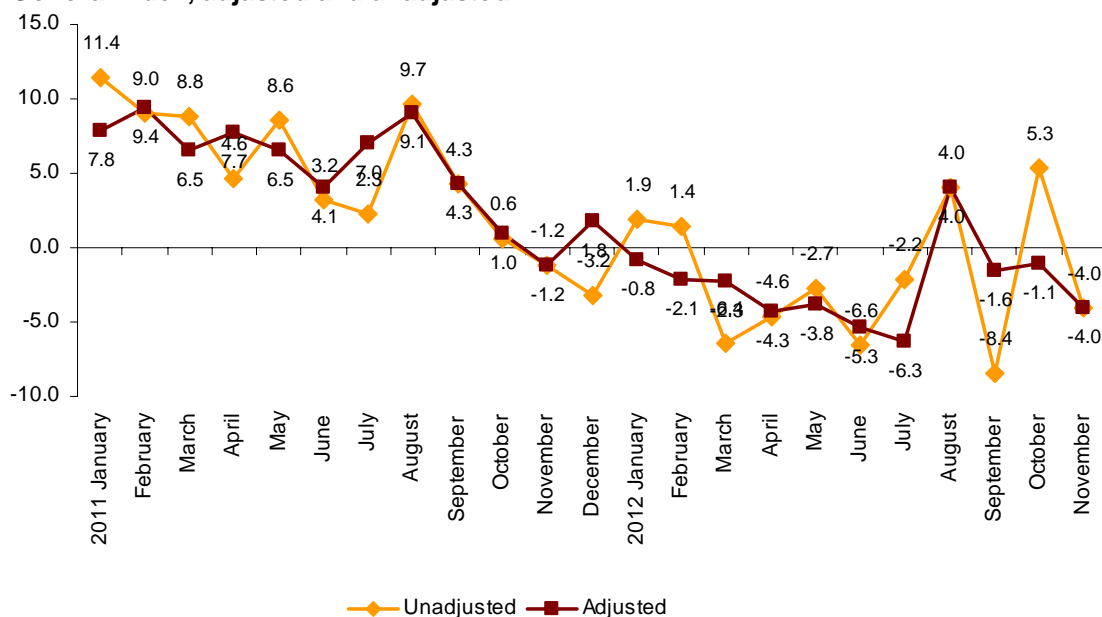
Annual and year-to-date average rates of ITI General index and by economic destination of the goods



Evolution of the ITI, adjusted for the calendar effect

After adjusting for the calendar effect, that is, the difference between the number of working days in a given month in different years, the annual variation of the ITI was **-4.0%**, almost three points below that registered in October.

Annual evolution of the ITI General Index, adjusted and unadjusted



Annual evolution of Industrial New Orders Received

The Industrial New Orders Received Index (INORI) experienced an annual variation of – 1.5% in November, seven points below that registered in October.

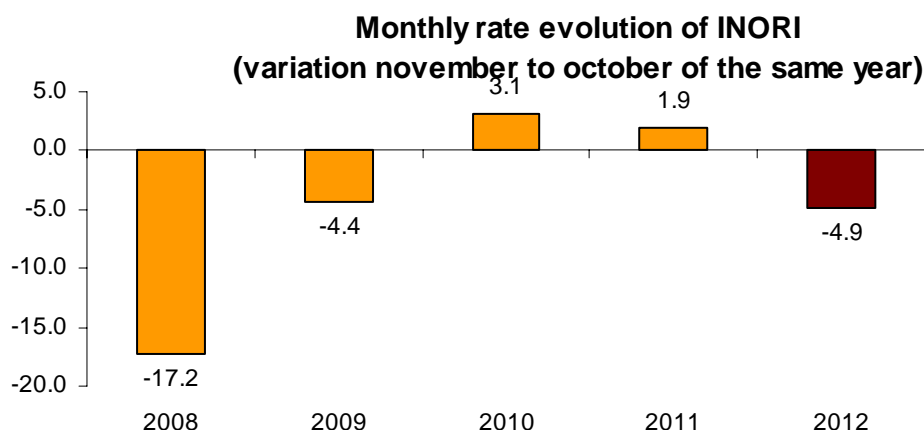
By economic destination of the goods, the industrial sector that presented the greatest negative effects on the general index was **Intermediate goods**, with an annual rate of –7.8% and an effect of –2.856, motivated by the decrease in almost all activities comprising this sector. Among them highlighted, by their influence, *Metallurgy; manufacture of iron, steel and ferro-alloy products, the Forging, pressing, stamping and roll-forming of metal; powder metallurgy, Manufacture of cutlery and silverware, tools and hardware and Manufacture of other non-metallic mineral products.*

In turn, the sectors with the greatest positive effect on the general index were:

- **Capital goods**, with an annual rate of 4.7% and an effect of 0.994, due to the positive evolution of the new orders received in *Repair and installation of machinery and equipment*, and in a lesser extend, *Naval, railway, aircraft and spacecraft construction. Combat vehicles.* The remained activities comprising this sector registered negative evolution, highlighting *Manufacture of machinery and equipment n.e.c. and Manufacture of motor vehicles, trailers and semi-trailers.*
- **Energy**, with an annual variation of 7.5% and an effect of 0.806, due to the increase registered in *Manufacture of coke and refined petroleum products.*

Monthly rate performance²

The variation of the New Orders Received between November and October was –4.9%. This month-on-month rate was the lowest registered in the last four years.

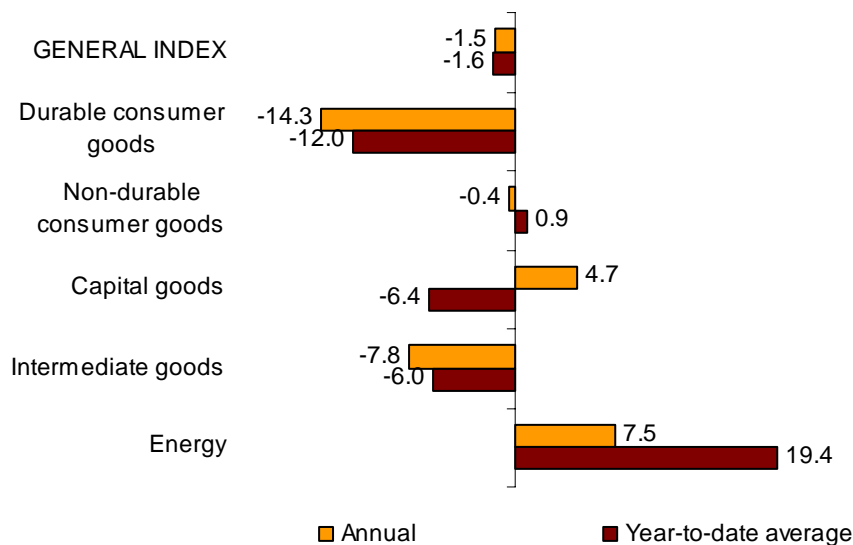


² In order to contribute to the analysis and interpretation of data, this section has been added with the monthly rate evolution of the INORI in the last years. The monthly rates of this type of series may have some degree of seasonal behaviour, therefore it is recommended that it be evaluated in relation to the item of data for the same month in previous years.

Year-to-date average rates

The average of the General Industrial New Orders Received Index in the first eleven months of the year registered a variation rate of **-1.6%**, as compared with the same period of 2011. By economic destination of the goods, this variation rate was negative, in all of the industrial sectors, except Energy and Non-durable consumer goods.

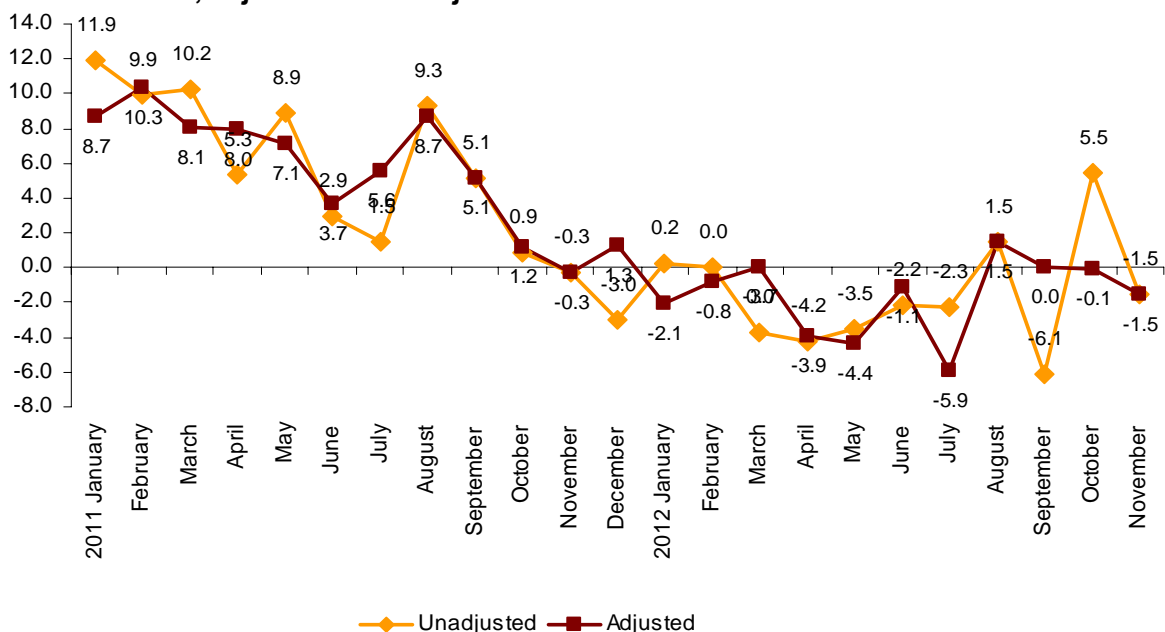
Annual and year-to-date average rates of INORI General index and by economic destination of the goods



Evolution of the INORI, adjusted for the calendar effect

After eliminating the calendar effect, that is, the difference between the number of working days in a given month in different years, **the annual variation of the INORI in November was -1.5%, almost one-and-a-half points below that registered in October.**

Annual evolution of the INORI General Index, adjusted and unadjusted



Industrial Turnover Indices. Base 2005

Industrial New Orders Received Indices. Base 2005

November 2012

Provisional data

1. Industrial turnover indices by economic destination¹

	Index	% variation		Effect Annual
		Annual	Year-to-date average	
GENERAL INDEX	95.1	-4.0	-2.3	
1. CONSUMER GOODS	97.8	-2.2	-0.2	-0.673
1.1. DURABLE CONSUMER GOODS	47.1	-12.4	-10.8	-0.286
- Manufacture of consumer electronics, optical instruments and photographic equipment	7.2	-37.2	-38.2	-0.027
- Manufacture of household appliances	67.5	-5.9	-3.5	-0.043
- Manufacture of motorcycles, bicycles, vehicles for the disabled and others	20.3	-29.6	-34.5	-0.029
- Manufacture of furniture	48.4	-14.5	-11.4	-0.174
- Manufacture of jewellery, costume jewellery and musical instruments	105.5	-6.3	-1.7	-0.013
1.2. NON-DURABLE CONSUMER GOODS	106.1	-1.4	0.7	-0.387
- Food industries (except grain mill products and food for animals)	122.0	2.5	2.9	0.384
- Manufacture of beverages	92.3	-7.6	0.9	-0.255
- Manufacture of tobacco	75.5	-2.9	2.3	-0.006
- Manufacture of knitted fabrics, carpets, rope, non-woven fabrics, textile products for technical use and industrial and other textile products	70.5	-3.7	-4.1	-0.022
- Manufacture of garments	66.2	5.8	5.1	0.061
- Leather and footwear industry	69.9	-13.3	-4.4	-0.102
- Graphic arts and reproduction of recorded media	63.1	-17.6	-14.6	-0.248
- Manufacture of cleaning articles, perfumes and cosmetics	87.9	-4.2	-2.2	-0.051
- Manufacture of pharmaceutical products	142.1	-3.0	-1.0	-0.111
- Manufacture of sporting goods; games and toys and Other manufacturing industries	86.8	-9.8	-6.0	-0.037
2. CAPITAL GOODS	89.6	-6.8	-8.9	-1.572
- Manufacture of metal products for construction, containers made of metal, steam generators, weapons and ammunition	54.2	-13.5	-18.8	-0.315
- Manufacture of computers, peripherals and telecommunications equipment; appliances for measuring and navigation; radiation and medical and therapeutic equipment	60.1	-12.1	-11.5	-0.075
- Manufacture of machinery and equipment n.e.c.	88.9	-8.2	-5.6	-0.297
- Manufacture of motor vehicles, trailers and semi-trailers	86.9	-10.2	-10.3	-1.247
- Naval, railway, aircraft and spacecraft construction. Combat vehicles	199.0	16.1	1.3	0.430
- Manufacture of medical and dental instruments and supplies	93.3	-6.7	-1.3	-0.009
- Repair and installation of machinery and equipment	109.9	-4.1	-4.9	-0.058
3. INTERMEDIATE GOODS	85.9	-7.0	-6.2	-2.532
- Other mining and quarrying	71.7	-14.4	-8.4	-0.101
- Manufacture of grain mill products, starches, and food for animals	152.3	8.1	3.3	0.245
- Preparation and spinning of textile fibres. Manufacture of woven textiles. Textile finishings	56.4	0.0	-6.5	0.000
- Wood and cork industry	53.7	-9.6	-9.1	-0.121
- Paper industry	105.4	-4.8	-3.4	-0.130
- Chemical industry except cleaning articles, perfumes and cosmetics	101.4	3.1	0.0	0.172
- Rubber and plastic material transformation industry	88.2	-9.9	-8.0	-0.420
- Manufacture of other non-metallic ore products	44.8	-16.3	-15.0	-0.602
- Metallurgy; manufacture of iron, steel and ferro-alloy products	92.0	-13.6	-11.0	-0.817
- Forging, stamping, embossing and rolling of metals. - Manufacture of tools, hardware goods, containers and other metal products	89.7	-13.6	-5.5	-0.676
- Manufacture of electronic components, assembled printed circuits, and magnetic and optical media	39.8	-45.1	-32.0	-0.104
- Manufacture of electrical material and equipment except household appliances	108.0	0.7	-2.9	0.021
4. ENERGY (Except supply of electrical energy, gas, steam, air conditioning)	147.8	7.3	19.6	0.772
- Extraction of anthracite, coal and lignite	71.8	-41.4	-19.4	..
- Extraction of crude oil, petroleum and natural gas
- Manufacture of coke and refined petroleum products	149.7	8.2	20.3	0.849

¹ Regulation (EC) no. 656/2007 of the European Commission.

(..) Data not available due to statistical secrecy.

2. Industrial turnover indices adjusted by calendar effects

	Original index	% variation		Adjusted index	% variation	
		Annual	Year-to-date average		Annual	Year-to-date average
General index	95.1	-4.0	-2.3	93.4	-4.0	-2.7
1. Consumer goods	97.8	-2.2	-0.2	96.3	-2.2	-0.8
1.1. Durable consumer goods	47.1	-12.4	-10.8	46.0	-12.4	-11.3
1.2. Non-durable consumer goods	106.1	-1.4	0.7	104.6	-1.4	0.2
2. Capital goods	89.6	-6.8	-8.9	87.9	-6.8	-9.5
3. Intermediate goods	85.9	-7.0	-6.2	84.2	-7.0	-6.3
4. Energy*	147.8	7.3	19.6	147.1	7.3	19.5

*Except supply of electrical energy, gas, steam and air conditioning.

3. Interannual rates

Industrial turnover indices by economic destination

Period	General index		Consumer goods		Durable consumer goods		Non-durable consumer goods	
	Original	Adjusted ¹	Original	Adjusted ¹	Original	Adjusted ¹	Original	Adjusted ¹
2011 November	-1.2	-1.2	-1.9	-1.9	-20.8	-20.8	0.0	0.0
December	-3.2	1.8	-1.4	3.7	-16.8	-11.3	0.0	4.9
2012 January *	1.9	-0.8	3.6	0.9	-6.5	-9.7	4.4	1.8
February *	1.4	-2.1	3.9	-1.1	-11.4	-15.6	5.4	0.7
March *	-6.4	-2.3	-2.3	2.1	-15.3	-10.5	-1.1	3.1
April *	-4.6	-4.3	-3.4	-3.0	-15.4	-15.0	-2.4	-2.0
May *	-2.7	-3.8	1.6	0.5	-11.4	-12.6	2.8	1.7
June *	-6.6	-5.3	-2.1	-0.8	-11.2	-9.7	-1.3	0.0
July *	-2.2	-6.3	-1.7	-5.7	-10.0	-14.8	-0.9	-4.8
August *	4.0	4.0	2.4	2.4	1.3	1.3	2.4	2.4
September *	-8.4	-1.6	-6.9	0.0	-18.5	-10.7	-5.9	0.7
October *	5.3	-1.1	5.9	-0.5	-2.1	-9.6	6.5	0.5
November	-4.0	-4.0	-2.2	-2.2	-12.4	-12.4	-1.4	-1.4

Period	Capital goods		Intermediate goods		Energy	
	Original	Adjusted ¹	Original	Adjusted ¹	Original	Adjusted ¹
2011 November	-4.4	-4.4	-5.1	-5.1	28.2	28.2
December	-11.4	-6.7	-4.5	0.8	16.6	18.1
2012 January *	-3.3	-5.9	-2.1	-4.8	22.4	21.6
February *	-2.2	-7.9	-5.2	-6.2	28.4	28.1
March *	-14.7	-10.8	-11.5	-7.3	22.0	23.4
April *	-10.4	-10.1	-6.7	-6.3	10.6	10.7
May *	-7.4	-8.4	-7.2	-8.3	12.9	12.5
June *	-14.7	-13.5	-8.3	-7.0	6.8	7.2
July *	-6.6	-10.6	-4.4	-8.6	12.9	11.7
August *	-0.6	-0.6	-3.7	-3.7	34.1	34.1
September *	-20.8	-14.7	-10.9	-3.8	24.8	27.1
October *	-3.0	-9.0	1.5	-5.1	34.9	32.7
November	-6.8	-6.8	-7.0	-7.0	7.3	7.3

¹ Index rates adjusted for calendar effects.

* Data revised.

4. Industrial Turnover Indices by branch of activity (CNAE 2009)

	Index	% variation		Effect Annual
		Annual	Year-to-date average	
GENERAL INDEX	95.1	-4.0	-2.3	
B. Mining and quarrying industries	73.4	-18.9	-10.2	-0.178
Extraction of anthracite, coal and lignite	71.8	-41.4	-19.4	..
Extraction of crude oil, petroleum and natural gas
Other mining and quarrying	71.7	-14.4	-8.4	-0.101
C. Manufacturing industry	95.3	-3.9	-2.2	-3.825
Food industry	126.3	3.4	3.0	0.629
Manufacture of beverages	92.3	-7.6	0.9	-0.255
Manufacture of tobacco	75.5	-2.9	2.3	-0.006
Textile industry	63.3	-2.1	-5.1	-0.022
Manufacture of garments	66.2	5.8	5.1	0.061
Leather and footwear industry	69.9	-13.3	-4.4	-0.102
Manufacture of wood and of products of wood and cork, except furniture; basketmaking and wickerwork	53.7	-9.6	-9.1	-0.121
Paper industry	105.4	-4.8	-3.4	-0.130
Graphic arts and reproduction of recorded media	63.1	-17.6	-14.6	-0.248
Manufacture of coke and refined petroleum products	149.7	8.2	20.3	0.849
Chemical industry	98.8	1.8	-0.4	0.122
Manufacture of pharmaceutical products	142.1	-3.0	-1.0	-0.111
Rubber and plastic material transformation industry	88.2	-9.9	-8.0	-0.420
Manufacture of other non-metallic ore products	44.8	-16.3	-15.0	-0.602
Metallurgy; manufacture of iron, steel and ferro-alloy products	92.0	-13.6	-11.0	-0.817
Manufacture of metal products, except machinery and equipment	74.1	-13.6	-10.0	-0.991
Manufacture of computer, electronic and optical products	38.7	-22.3	-19.3	-0.206
Manufacture of electrical material and equipment	97.8	-0.5	-3.0	-0.021
Manufacture of machinery and equipment n.e.c.	88.9	-8.2	-5.6	-0.297
Manufacture of motor vehicles, trailers and semi-trailers	86.9	-10.2	-10.3	-1.247
Manufacture of other transport material	166.9	14.4	-0.8	0.401
Manufacture of furniture	48.4	-14.5	-11.4	-0.174
Other manufacturing industries	92.9	-8.2	-3.9	-0.059
Repair and installation of machinery and equipment	109.9	-4.1	-4.9	-0.058

(..) Data not available due to statistical secrecy.

5. Industrial New Orders Received Indices by economic destination¹

	Index	% variation		Effect Annual
		Annual	Year-to-date average	
GENERAL INDEX	94.5	-1.5	-1.6	
1. CONSUMER GOODS	99.1	-1.4	-0.1	-0.455
1.1. DURABLE CONSUMER GOODS	45.7	-14.3	-12.0	-0.336
- Manufacture of consumer electronics, optical instruments and photographic equipment	7.4	-40.0	-37.3	-0.032
- Manufacture of household appliances	65.1	-7.4	-4.5	-0.054
- Manufacture of motorcycles, bicycles, vehicles for the disabled and others	21.2	-36.1	-38.3	-0.042
- Manufacture of furniture	47.0	-16.3	-12.6	-0.200
- Manufacture of jewellery, costume jewellery and musical instruments	101.3	-3.9	-2.1	-0.008
1.2. NON-DURABLE CONSUMER GOODS	107.8	-0.4	0.9	-0.119
- Food industries (except grain mill products and food for animals)	123.6	2.9	3.0	0.466
- Manufacture of beverages	98.4	-5.7	1.0	-0.208
- Manufacture of tobacco	75.5	-2.9	2.1	-0.006
- Manufacture of knitted fabrics, carpets, rope, non-woven fabrics, textile products for technical use and industrial and other textile products	70.9	-3.3	-3.6	-0.020
- Manufacture of garments	70.6	7.7	4.1	0.088
- Leather and footwear industry	79.4	-21.4	-3.5	-0.211
- Graphic arts and reproduction of recorded media	56.4	-14.9	-14.4	-0.188
- Manufacture of cleaning articles, perfumes and cosmetics	88.4	-0.6	-1.7	-0.008
- Manufacture of pharmaceutical products	143.3	1.4	0.0	0.053
- Manufacture of sporting goods; games and toys and Other manufacturing industries	76.1	-21.5	-3.5	-0.084
2. CAPITAL GOODS	88.9	4.7	-6.4	0.994
- Manufacture of metal products for construction, containers made of metal, steam generators, weapons and ammunition	67.4	-11.0	-12.6	-0.321
- Manufacture of computers, peripherals and telecommunications equipment; appliances for measuring and navigation; radiation and medical and therapeutic equipment	51.8	-9.7	-14.0	-0.052
- Manufacture of machinery and equipment n.e.c.	80.1	-14.5	-2.7	-0.528
- Manufacture of motor vehicles, trailers and semi-trailers	84.2	-3.9	-11.3	-0.452
- Naval, railway, aircraft and spacecraft construction. Combat vehicles	107.3	42.1	30.7	0.511
- Manufacture of medical and dental instruments and supplies	85.6	-10.5	-0.3	-0.014
- Repair and installation of machinery and equipment	232.1	163.0	16.1	1.849
3. INTERMEDIATE GOODS	84.1	-7.8	-6.0	-2.856
- Other mining and quarrying	72.4	-14.7	-8.5	-0.108
- Manufacture of grain mill products, starches, and food for animals	151.1	8.2	4.0	0.253
- Preparation and spinning of textile fibres. Manufacture of woven textiles. Textile finishings	57.5	-4.5	-3.9	-0.023
- Wood and cork industry	52.1	-10.4	-8.2	-0.134
- Paper industry	101.0	-8.1	-2.4	-0.223
- Chemical industry except cleaning articles, perfumes and cosmetics	103.2	-0.8	-0.9	-0.049
- Rubber and plastic material transformation industry	86.7	-8.2	-8.5	-0.347
- Manufacture of other non-metallic ore products	44.9	-14.2	-13.2	-0.532
- Metallurgy; manufacture of iron, steel and ferro-alloy products	92.3	-10.8	-11.4	-0.649
- Forging, stamping, embossing and rolling of metals. - Manufacture of tools, hardware goods, containers and other metal products	90.0	-10.3	-6.0	-0.510
- Manufacture of electronic components, assembled printed circuits, and magnetic and optical media	41.6	-41.0	-32.1	-0.095
- Manufacture of electrical material and equipment except household appliances	87.1	-14.0	-1.5	-0.438
4. ENERGY (Except supply of electrical energy, gas, steam, air conditioning)	147.0	7.5	19.4	0.806
- Extraction of anthracite, coal and lignite	63.1	-22.6	-18.2	..
- Extraction of crude oil, petroleum and natural gas
- Manufacture of coke and refined petroleum products	149.1	7.8	20.0	0.827

¹ Regulation (EC) no. 656/2007 of the European Commission.

(..) Data not available due to statistical secrecy.

6. Industrial New Orders indices adjusted by calendar effects

	Original index	% variation		Adjusted index	% variation	
		Annual	Year-to-date average		Annual	Year-to-date average
General index	94.5	-1.5	-1.6	93.2	-1.5	-1.7
1. Consumer goods	99.1	-1.4	-0.1	97.7	-1.4	-0.6
1.1. Durable consumer goods	45.7	-14.3	-12.0	44.9	-14.3	-12.2
1.2. Non-durable consumer goods	107.8	-0.4	0.9	106.3	-0.4	0.3
2. Capital goods	88.9	4.7	-6.4	87.5	4.7	-6.8
3. Intermediate goods	84.1	-7.8	-6.0	82.6	-7.8	-6.3
4. Energy*	147.0	7.5	19.4	146.5	7.5	19.4

*Except supply of electrical energy, gas, steam and air conditioning.

7. Interannual rates

Industrial New Orders indices by economic destination

Period	General index		Consumer goods		Durable consumer goods		Non-durable consumer goods	
	Original	Adjusted ¹	Original	Adjusted ¹	Original	Adjusted ¹	Original	Adjusted ¹
2011 November	-0.3	-0.3	-2.9	-2.9	-18.8	-18.8	-1.4	-1.4
December	-3.0	1.3	-3.5	1.3	-22.7	-18.6	-1.8	3.2
2012 January *	0.2	-2.1	3.7	1.0	-12.1	-14.5	5.1	2.3
February *	0.0	-0.8	-1.3	-6.6	-13.1	-14.0	-0.2	-5.7
March *	-3.7	0.0	-0.2	4.1	-12.6	-8.5	0.9	5.4
April *	-4.2	-3.9	-3.8	-3.4	-18.5	-18.2	-2.5	-2.2
May *	-3.5	-4.4	1.5	0.4	-13.0	-14.0	2.7	1.6
June *	-2.2	-1.1	-1.3	0.0	-13.7	-12.5	-0.2	1.1
July *	-2.3	-5.9	-0.1	-4.1	-7.8	-11.7	0.6	-3.6
August *	1.5	1.5	1.7	1.7	-3.0	-3.0	2.0	2.0
September *	-6.1	0.0	-4.7	2.2	-15.0	-8.4	-3.9	3.3
October *	5.5	-0.1	5.6	-0.6	-6.2	-12.0	6.5	0.1
November	-1.5	-1.5	-1.4	-1.4	-14.3	-14.3	-0.4	-0.4

Period	Capital goods		Intermediate goods		Energy	
	Original	Adjusted ¹	Original	Adjusted ¹	Original	Adjusted ¹
2011 November	0.6	0.6	-4.8	-4.8	27.6	27.6
December	-9.6	-4.5	-3.7	1.4	15.9	17.9
2012 January *	-11.7	-14.2	-1.0	-3.7	22.0	20.8
February *	-3.8	-8.1	-4.0	-7.3	28.3	27.9
March *	-9.8	-5.5	-9.2	-5.1	21.9	23.8
April *	-7.3	-6.9	-7.1	-6.8	10.7	10.8
May *	-10.0	-11.1	-7.7	-8.7	12.6	12.2
June *	-1.3	0.1	-5.8	-4.5	6.8	7.3
July *	-9.7	-13.8	-4.5	-8.5	12.7	11.1
August *	-8.2	-8.2	-6.1	-6.1	33.9	33.9
September *	-12.8	-5.7	-12.0	-5.3	24.8	27.9
October *	0.3	-6.2	0.2	-5.9	34.3	31.4
November	4.7	4.7	-7.8	-7.8	7.5	7.5

¹ Index rates adjusted for calendar effects.

* Data revised.

8. Industrial New Orders Received Indices by branch of activity (CNAE 2009)

	Index	% variation		Effect Annual
		Annual	Year-to-date average	
GENERAL INDEX	94.5	-1.5	-1.6	
B. Mining and quarrying industries	72.4	-14.2	-9.7	-0.128
Extraction of anthracite, coal and lignite	63.1	-22.6	-18.2	..
Extraction of crude oil, petroleum and natural gas
Other mining and quarrying	72.4	-14.7	-8.5	-0.108
C. Manufacturing industry	94.8	-1.4	-1.5	-1.382
Food industry	127.5	3.8	3.2	0.719
Manufacture of beverages	98.4	-5.7	1.0	-0.208
Manufacture of tobacco	75.5	-2.9	2.1	-0.006
Textile industry	64.1	-3.8	-3.7	-0.044
Manufacture of garments	70.6	7.7	4.1	0.088
Leather and footwear industry	79.4	-21.4	-3.5	-0.211
Manufacture of wood and of products of wood and cork, except furniture; basketmaking and wickerwork	52.1	-10.4	-8.2	-0.134
Paper industry	101.0	-8.1	-2.4	-0.223
graphic arts and reproduction of recorded media	56.4	-14.9	-14.4	-0.188
Manufacture of coke and refined petroleum products	149.1	7.8	20.0	0.827
Chemical industry	100.3	-0.8	-1.1	-0.057
Manufacture of pharmaceutical products	143.3	1.4	0.0	0.053
Rubber and plastic material transformation industry	86.7	-8.2	-8.5	-0.347
Manufacture of other non-metallic ore products	44.9	-14.2	-13.2	-0.532
Metallurgy; manufacture of iron, steel and ferro-alloy products	92.3	-10.8	-11.4	-0.649
Manufacture of metal products, except machinery and equipment	80.2	-10.6	-8.4	-0.831
Manufacture of computer, electronic and optical products	35.1	-21.1	-21.8	-0.179
Manufacture of electrical material and equipment	81.6	-12.8	-2.0	-0.493
Manufacture of machinery and equipment n.e.c.	80.1	-14.5	-2.7	-0.528
Manufacture of motor vehicles, trailers and semi-trailers	84.2	-3.9	-11.3	-0.452
Manufacture of other transport material	91.9	35.2	21.4	0.469
Manufacture of furniture	47.0	-16.3	-12.6	-0.200
Other manufacturing industries	84.5	-14.6	-2.5	-0.105
Repair and installation of machinery and equipment	232.1	163.0	16.1	1.849

(..) Data not available due to statistical secrecy.